



Cemaden
Centro Nacional de Monitoramento
e Alertas de Desastres Naturais

**Centro Nacional de Monitoramento e
Alertas de Desastres Naturais**

Monitoramento e Previsões para a Bacia do rio Paraná

Fevereiro de 2026

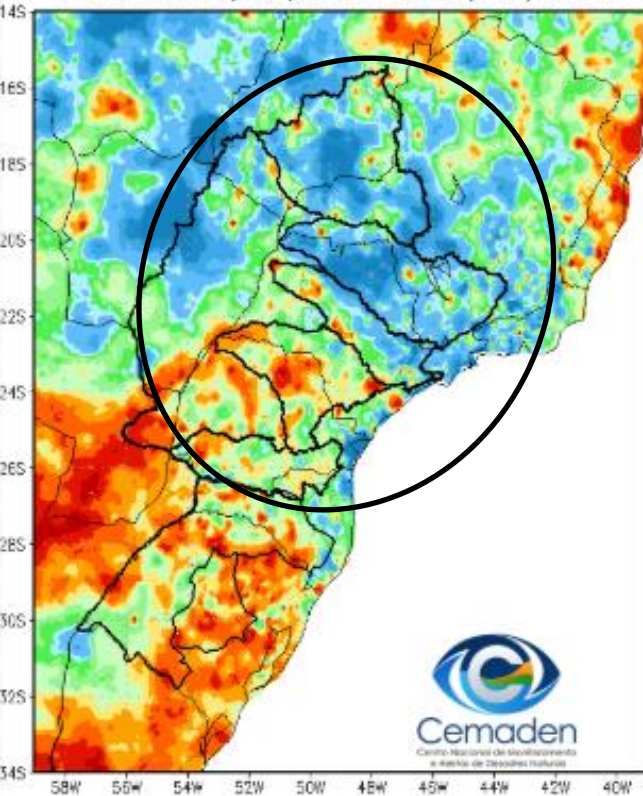


MINISTÉRIO DA
**CIÊNCIA, TECNOLOGIA
E INOVAÇÃO**

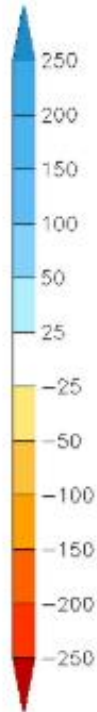
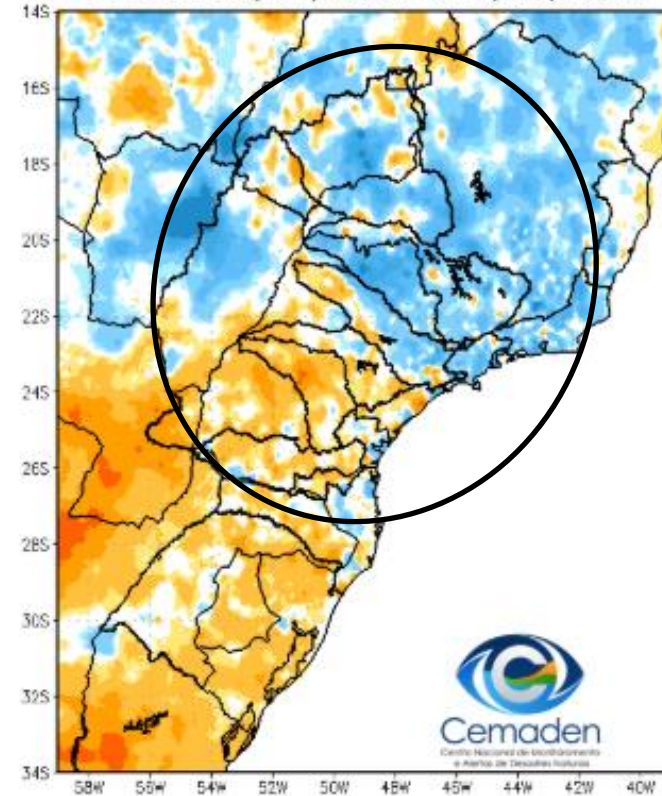


Precipitação acumulada nos últimos 30 dias

Precipitação Acumulada (mm) A.S.
Período: 27/01/2026 a 26/02/2026

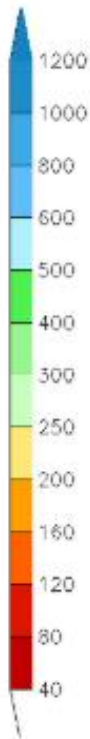
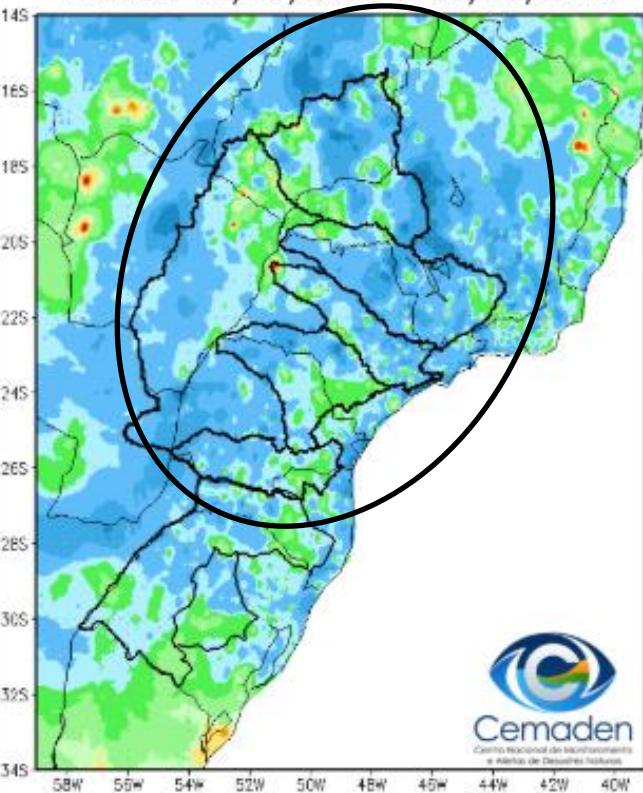


Anomalia de Precipitação (mm) A.S.
Período: 27/01/2026 a 26/02/2026

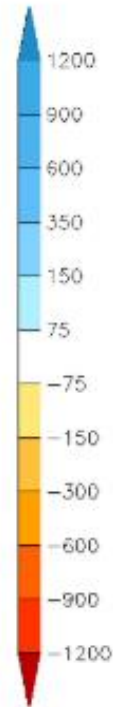
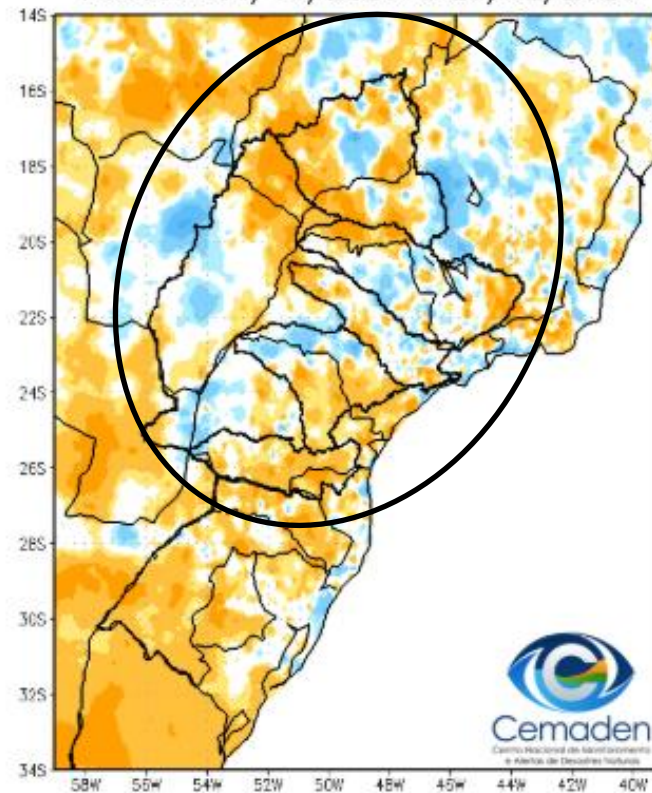


Precipitação acumulada no ano hidrológico

Precipitação Acumulada (mm) A.S.
Período: 01/10/2025 a 25/02/2026

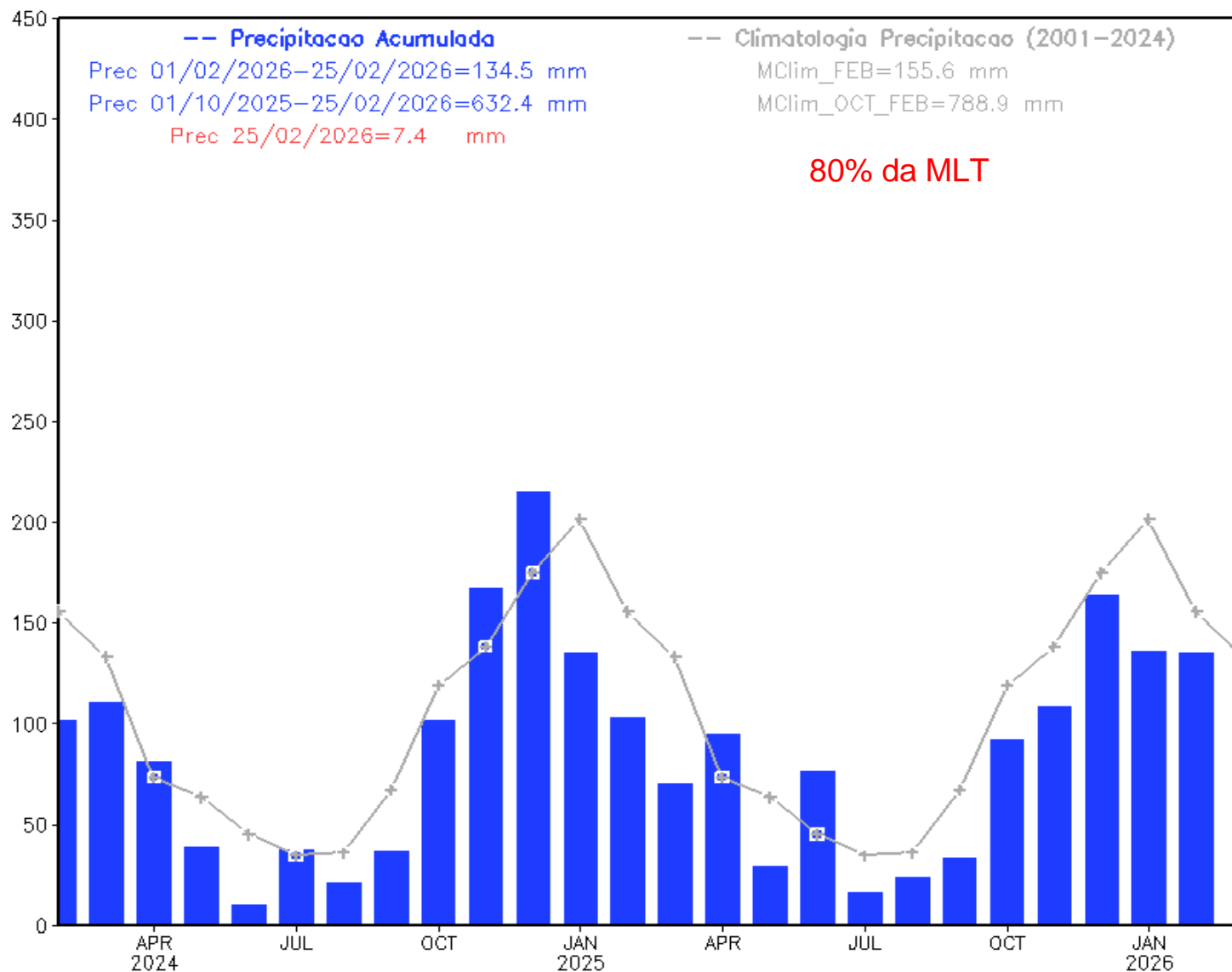


Anomalia de Precipitação (mm) A.S.
Período: 01/10/2025 a 25/02/2026

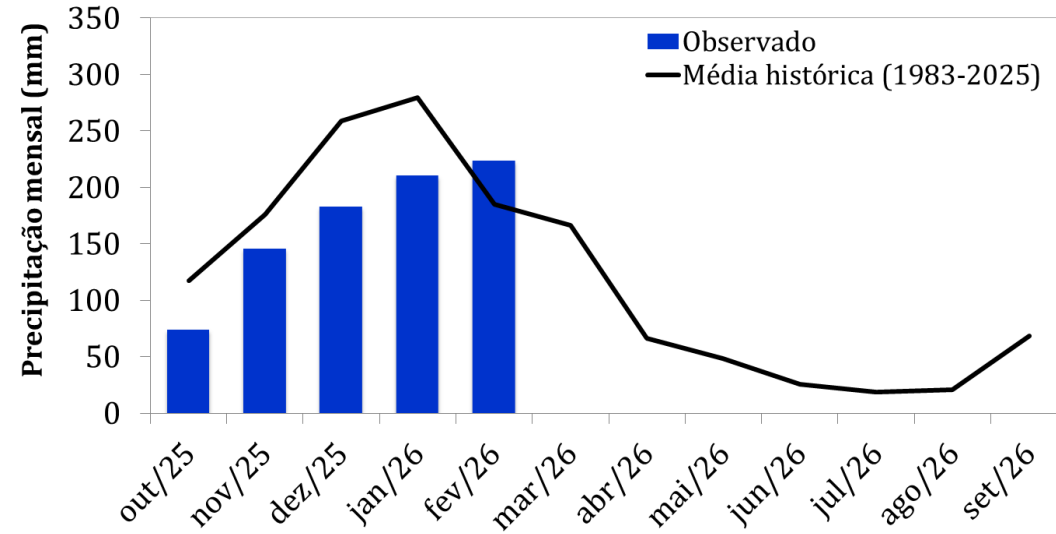


Precipitação acumulada nos últimos 24 meses

Precipitação Bacia do Rio Parana desde FEB 2024



Monitoramento UHE Furnas



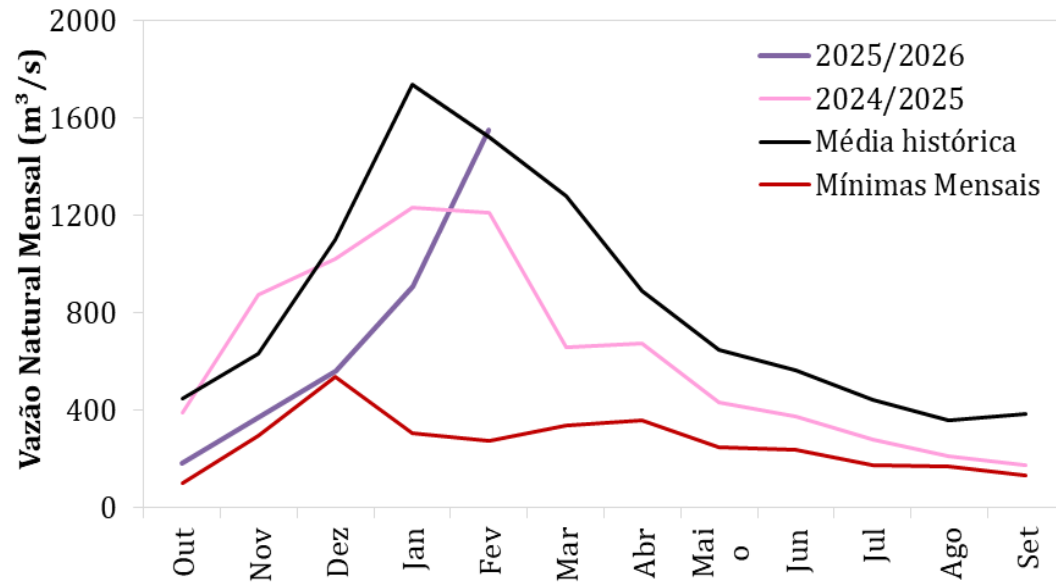
Precipitação

Estação Chuvosa - Out a Mar – 1184 mm
 2024/2025: 1148 mm (**97% da MLT**)
 2025/2026*: 837 mm (**87% da MLT PARCIAL**)

Estação Seca - Abr a Set – 248 mm
 2024: 102 mm (**41% da MLT**)
 2025: 193 mm (**78% da MLT**)

Jan/2026: 210 mm (**75% da MLT**)
Fev/2026*: 224 mm (**121% da MLT**)

*Até 24/02/2026



Vazão

Estação Chuvosa - Out a Mar – 1120 m³/s
 2024/2025: 897 m³/s (**80% da MLT**)
 2025/2026**: 491 m³/s (**44% da MLT**)

Estação Seca - Abr a Set – 546 m³/s
 2024: 309 m³/s (**56% da MLT**)
 2025: 356 m³/s (**65% da MLT**)

Jan/26: 907 m³/s (**52% da MLT**)
Fev/26:** 1548 m³/s (**102% da MLT**)
24/Fev/26: 1187 m³/s (**78% da MLT**)

**Até 24/02/2026

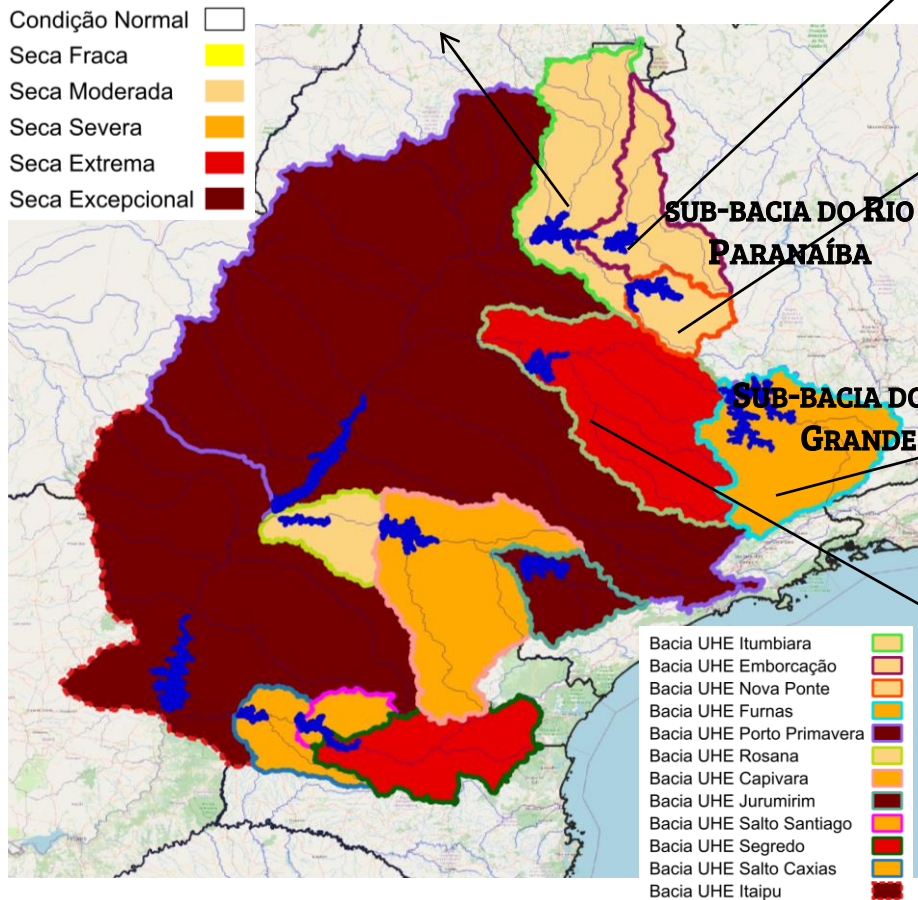
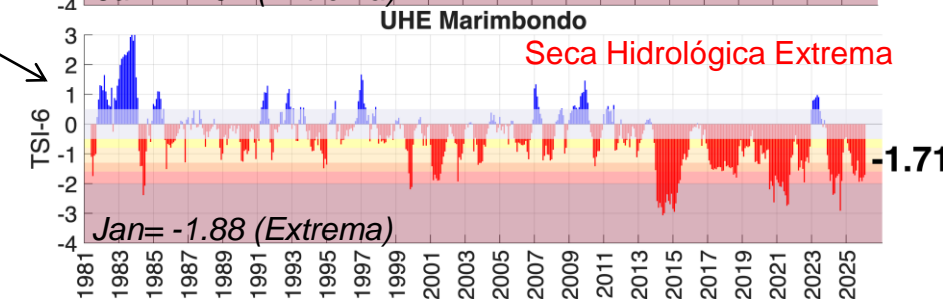
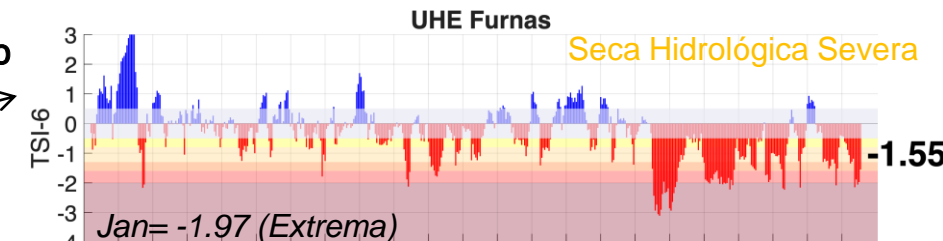
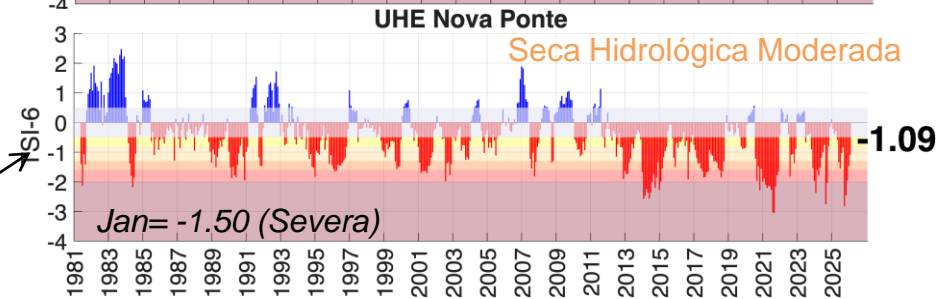
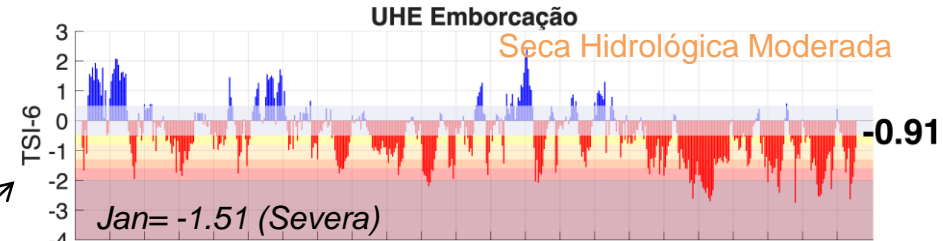
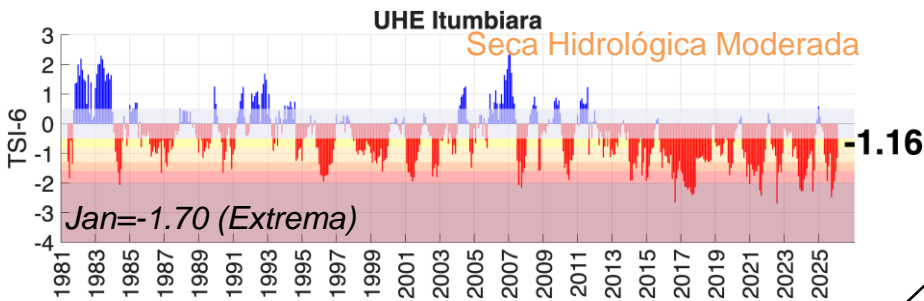
Média de Longo Termo – MLT = 1983-

Dados de precipitação: INMET, ANA, CEMADEN
 Dados de vazão: ONS e ANA

BACIA DO RIO PARANÁ

Índice de Seca Bivariado (Chuva-Vazão) – TSI 6

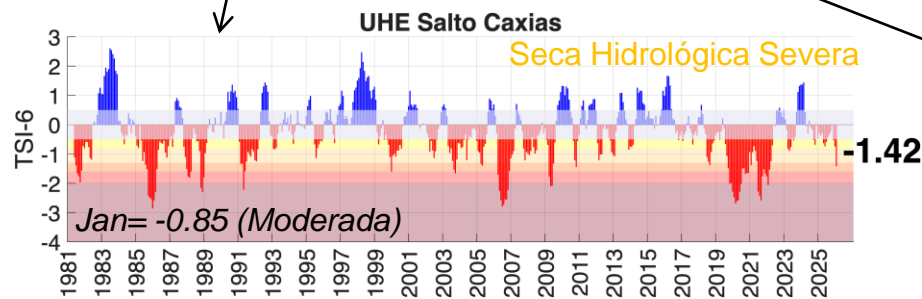
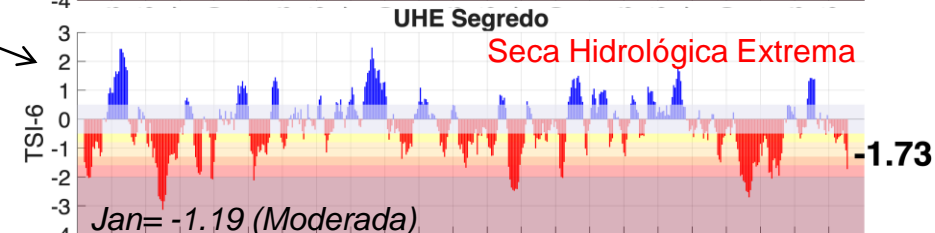
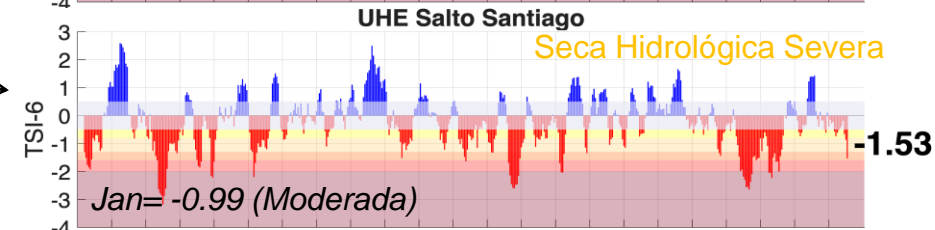
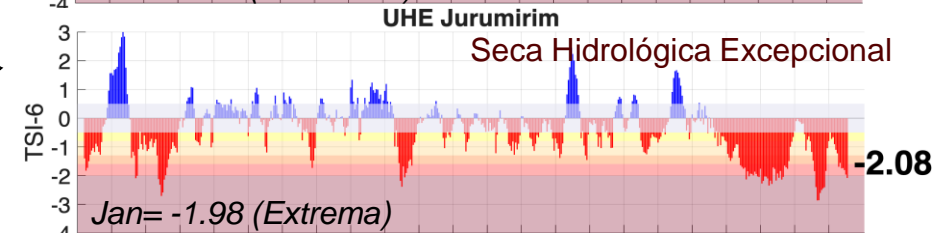
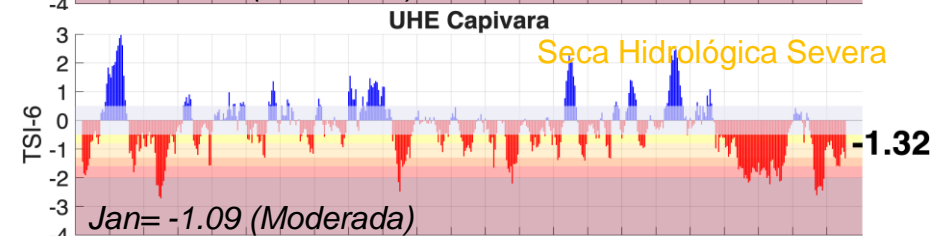
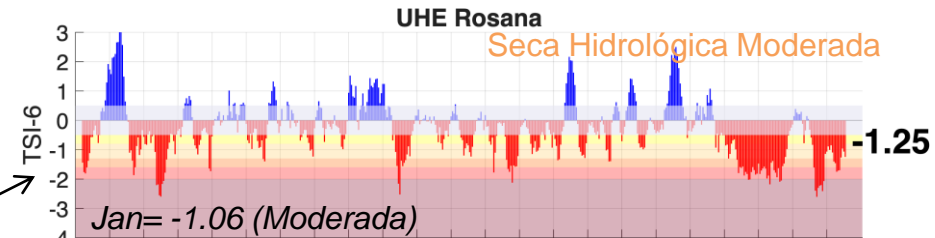
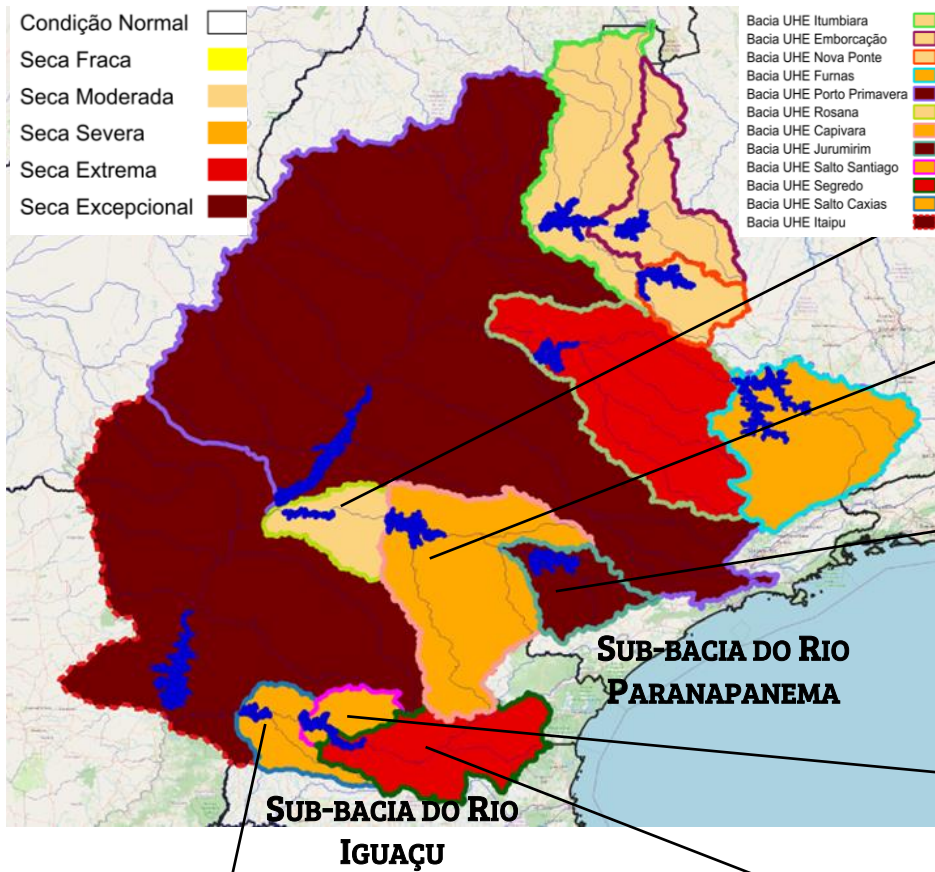
Fev/26- Parcial



BACIA DO RIO PARANÁ

Índice de Seca Bivariado (Chuva-Vazão) – TSI 6

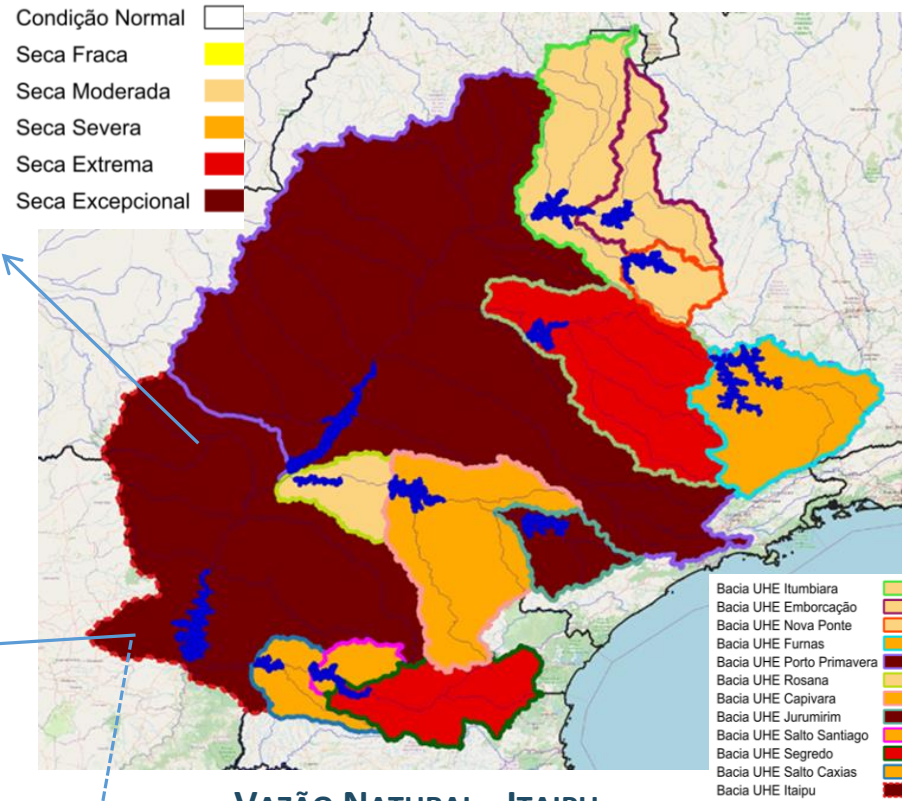
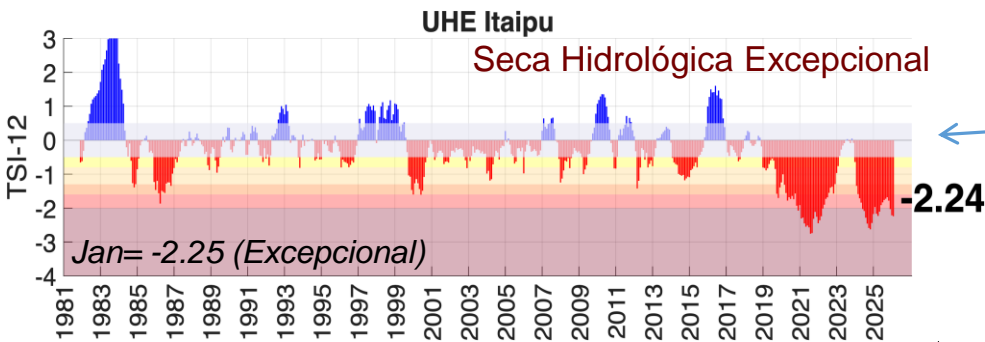
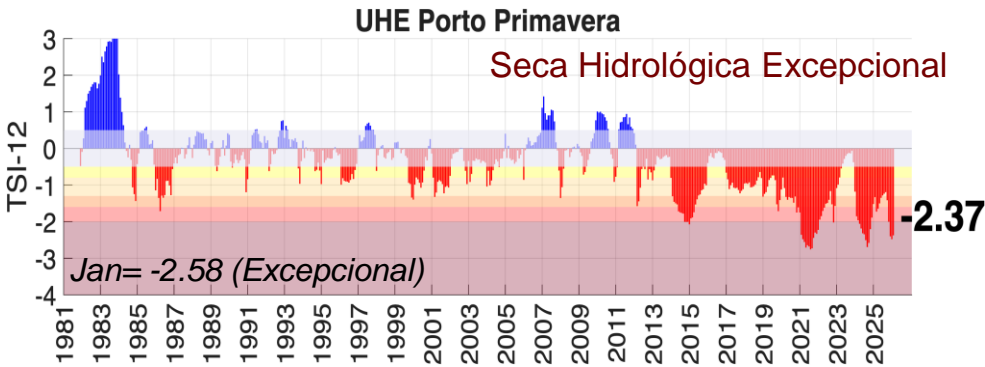
Fev/26 - Parcial



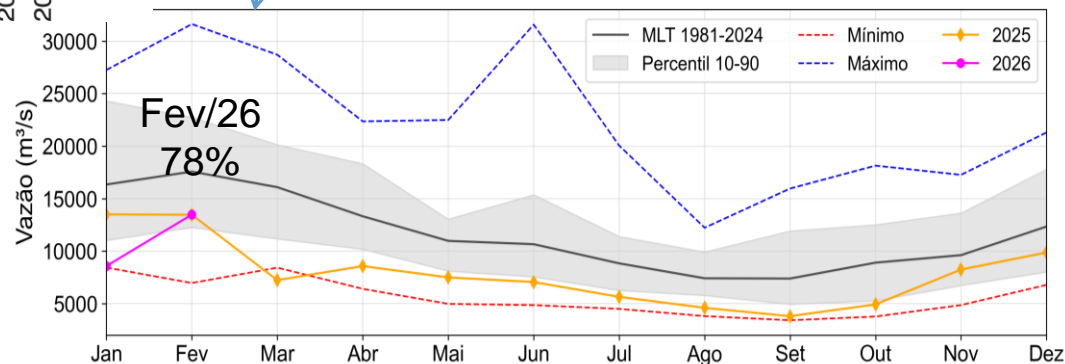
BACIA DO RIO PARANÁ

Fev/26- Parcial

Índice de Seca Bivariado (Chuva-Vazão) – TSI 12

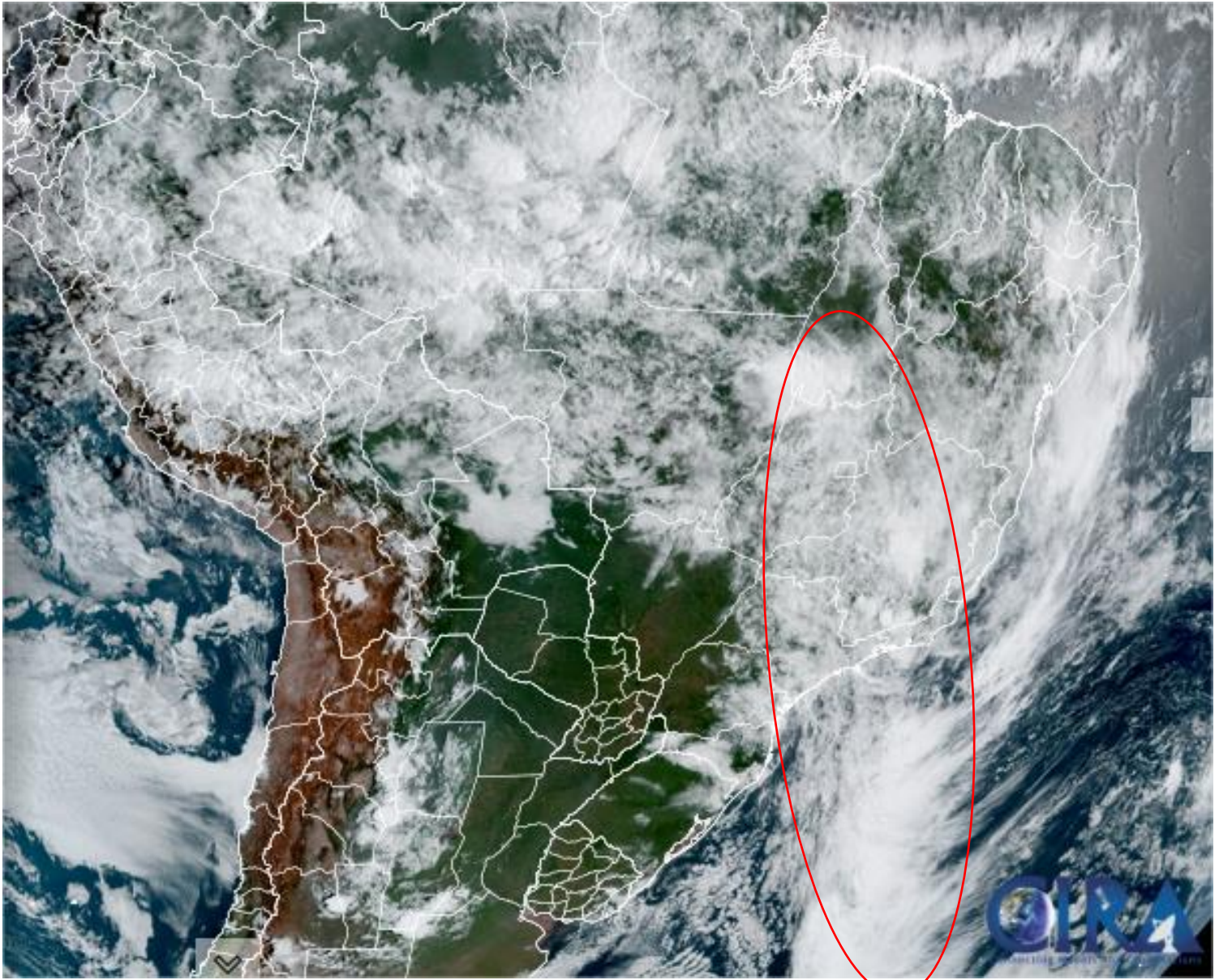


VAZÃO NATURAL - ITAIPU



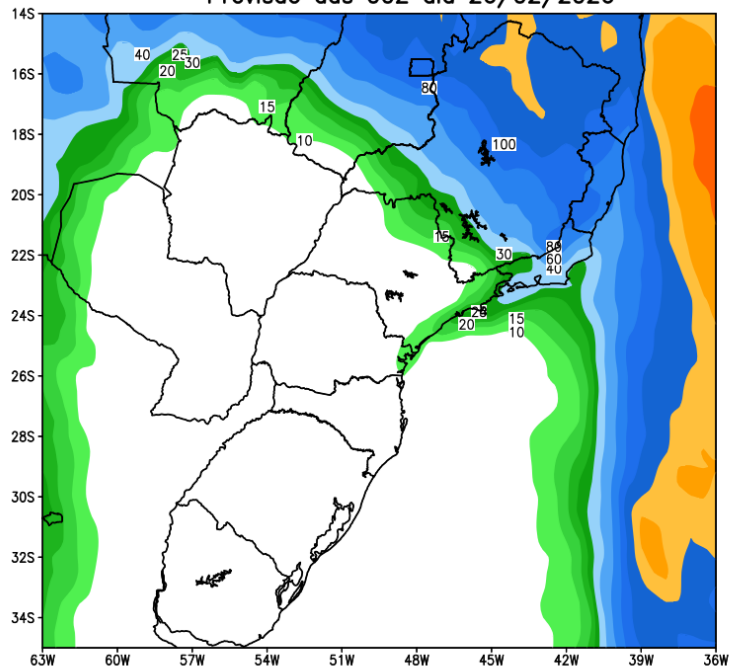
Fonte: CEMADEN/MCTI
 Dados: Precipitação (CHIRPS) e Vazão (ONS e ANA) Período: Jan/1981 – Fev/2026

Situação meteorológica atual

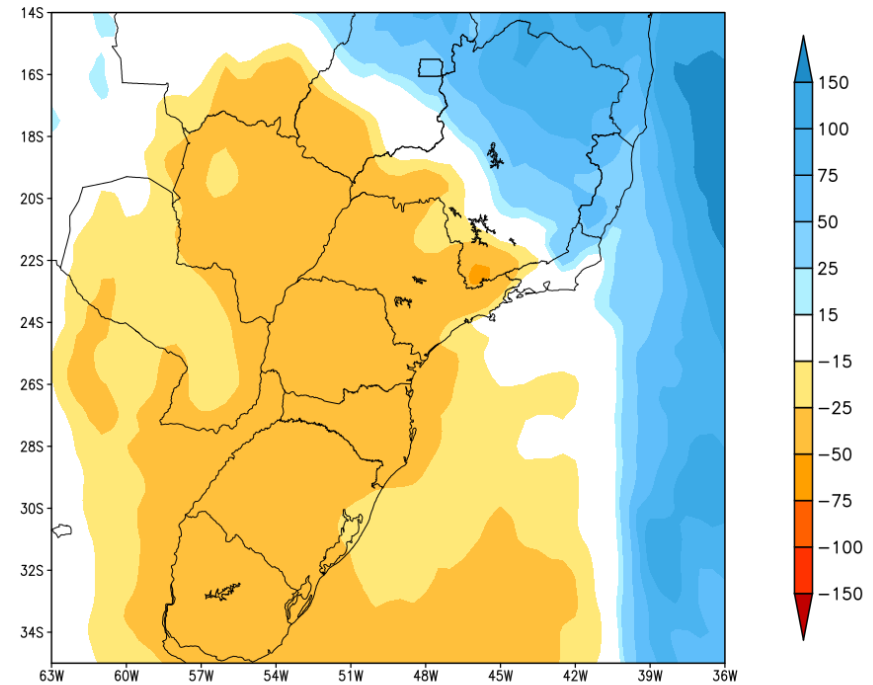


Previsão de chuva para os próximos 7 dias

GEFS / BRASIL_SUL
Precipitacao acumulada 1aSem (mm)
Previsao das 00Z dia 26/02/2026



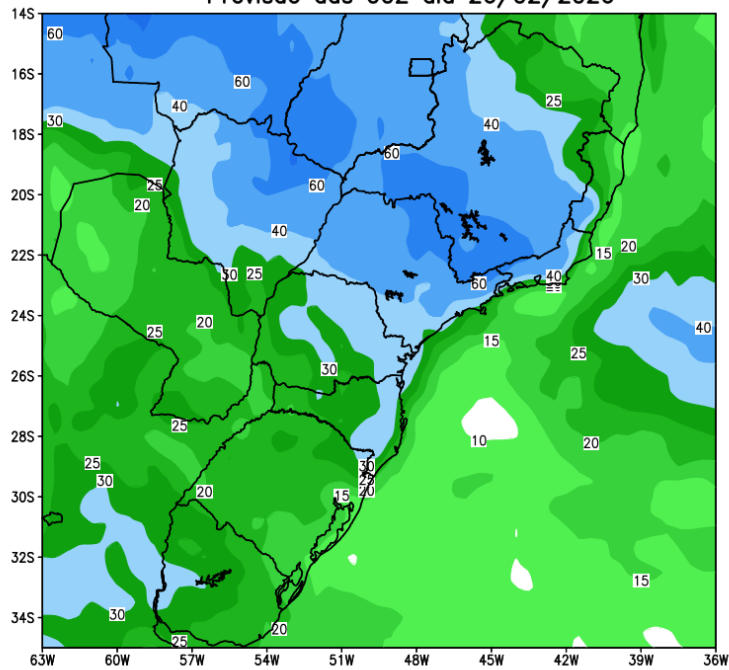
Anomalia de Precipitacao BR_SUL (mm)
Periodo: 2026022600 a 2026030500



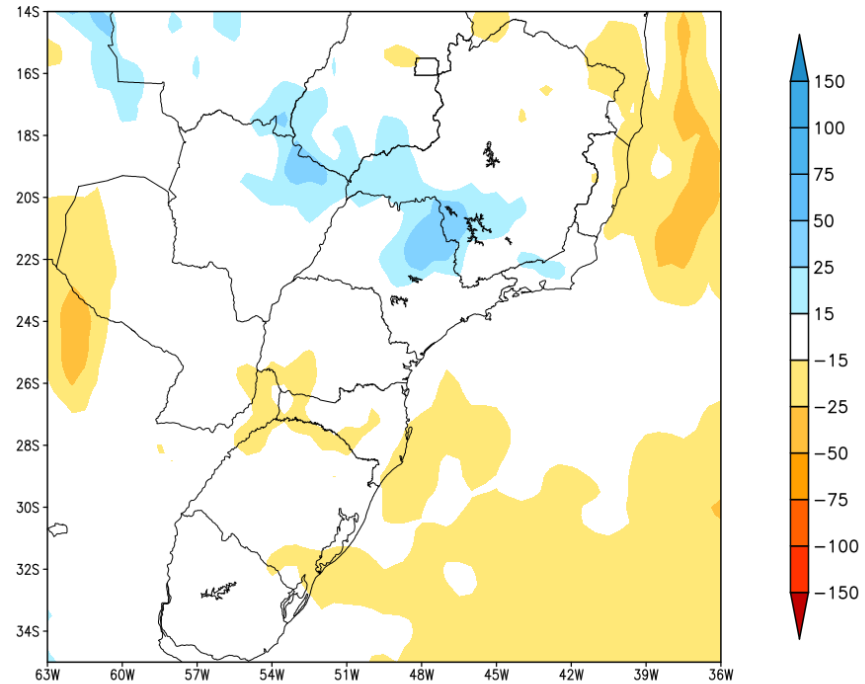
Fonte: GEFS/NOAA

Tendência para a 2ª Semana

GEFS / BRASIL_SUL
Precipitacao acumulada 2aSem (mm)
Previsao das 00Z dia 26/02/2026

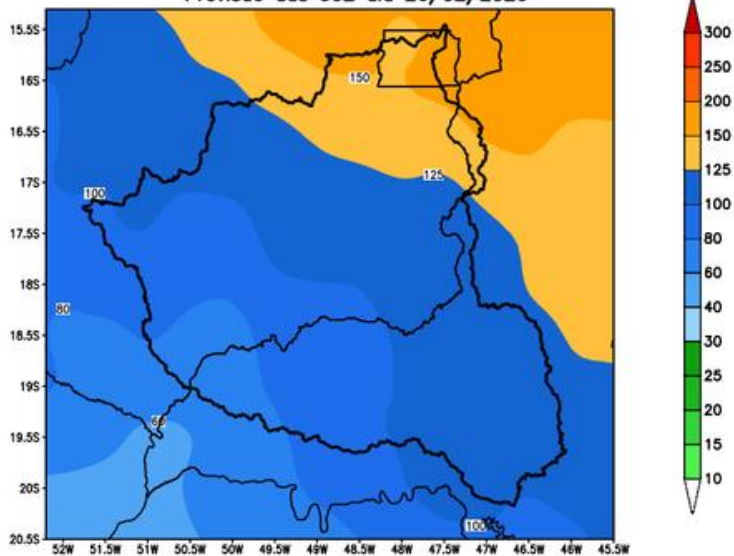


Anomalia de Precipitacao BR_SUL (mm)
Periodo: 2026030600 a 2026031200

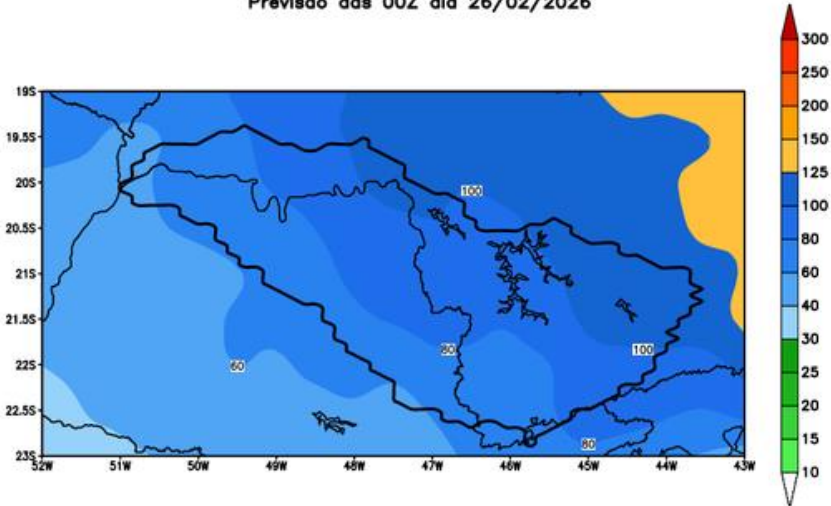


Bacia do rios Paranaíba e Grande

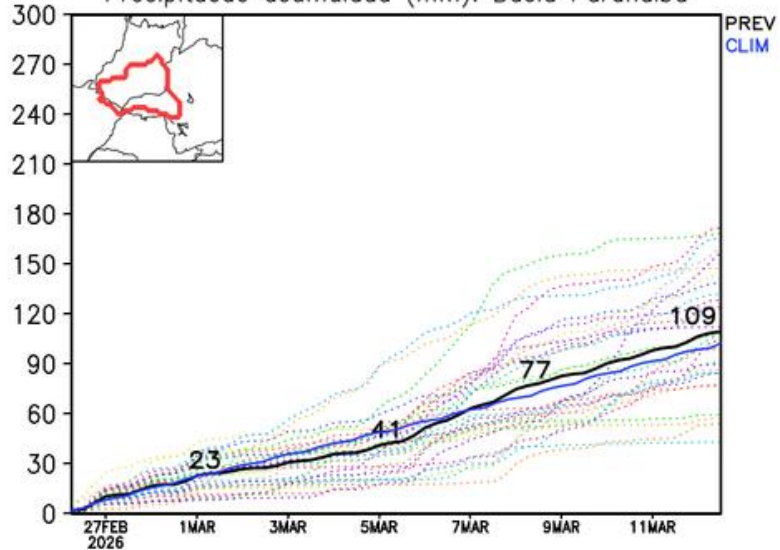
GEFS / Bacia do Rio Paranaíba
Precipitação acumulada em 14 dias (mm)
Previsão das 00Z dia 26/02/2026



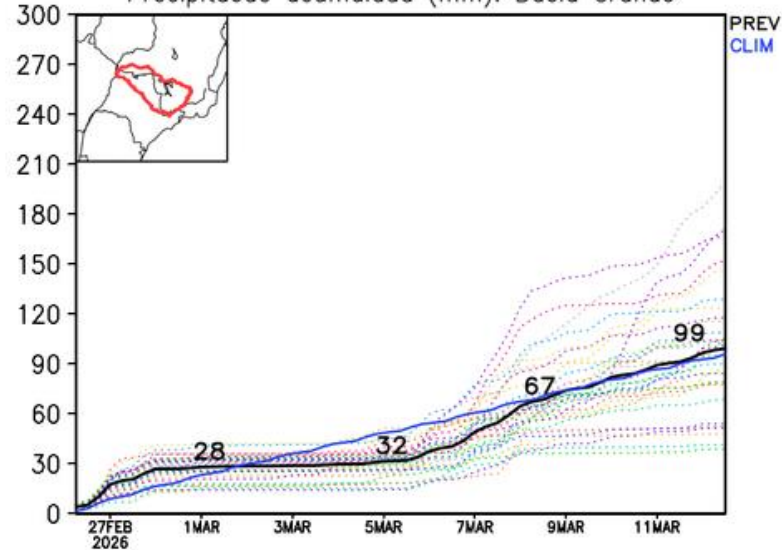
GEFS / Bacia do Rio Grande
Precipitação acumulada em 14 dias (mm)
Previsão das 00Z dia 26/02/2026



Precipitação acumulada (mm): Bacia Paranaíba

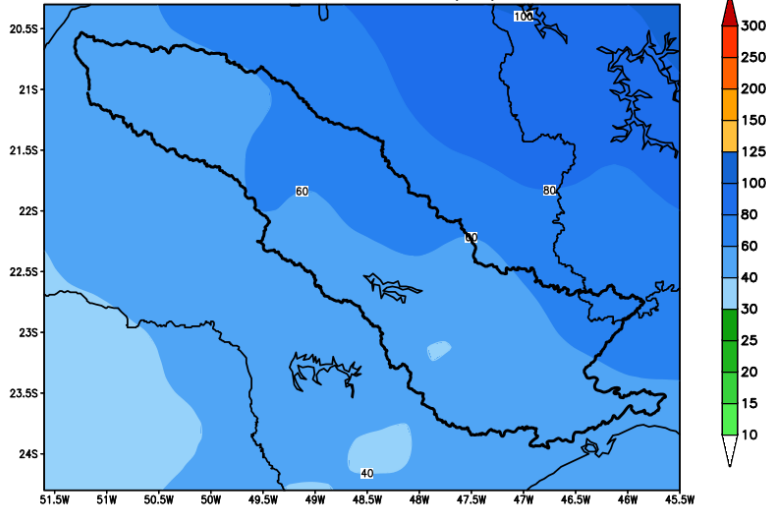


Precipitação acumulada (mm): Bacia Grande

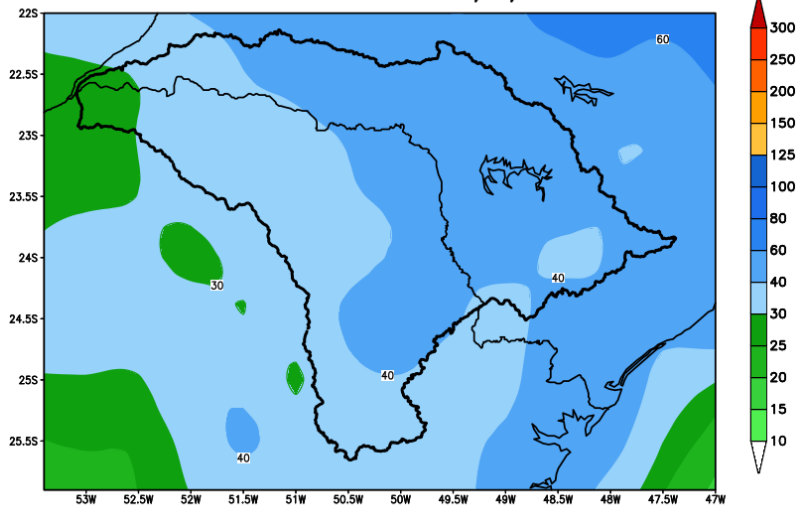


Bacia do rios Tietê e Paranapanema

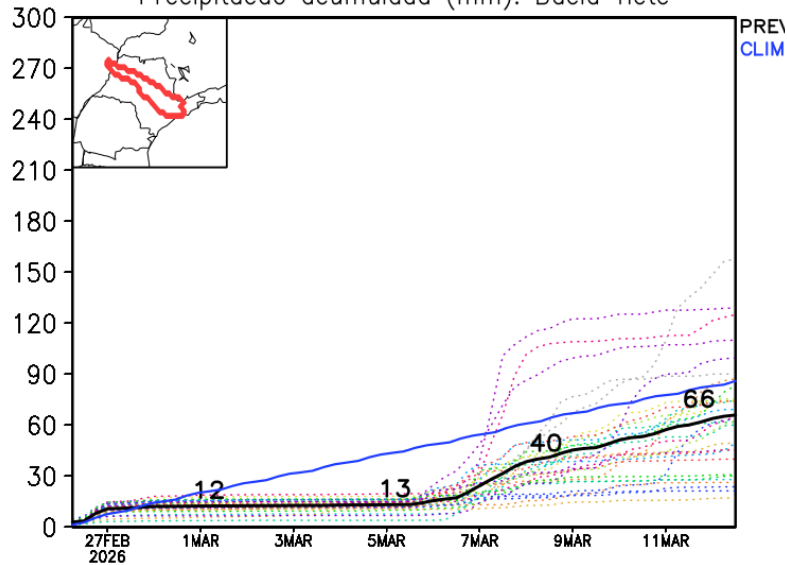
GEFS / Bacia do Rio Tiete
Precipitacao acumulada em 14 dias (mm)
Previsao das 00Z dia 26/02/2026



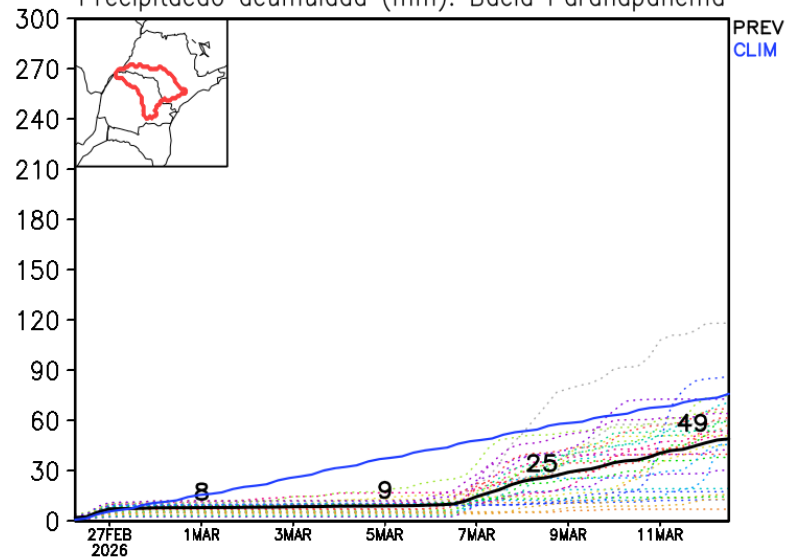
GEFS / Bacia do Rio Paranapanema
Precipitacao acumulada em 14 dias (mm)
Previsao das 00Z dia 26/02/2026



Precipitacao acumulada (mm): Bacia Tiete

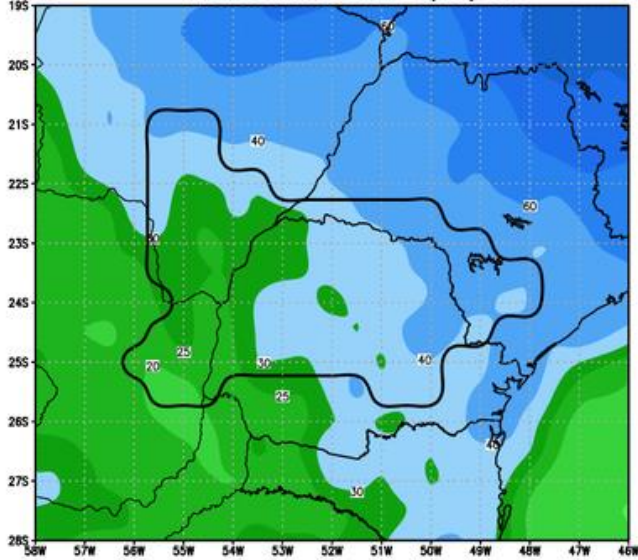


Precipitacao acumulada (mm): Bacia Paranapanema

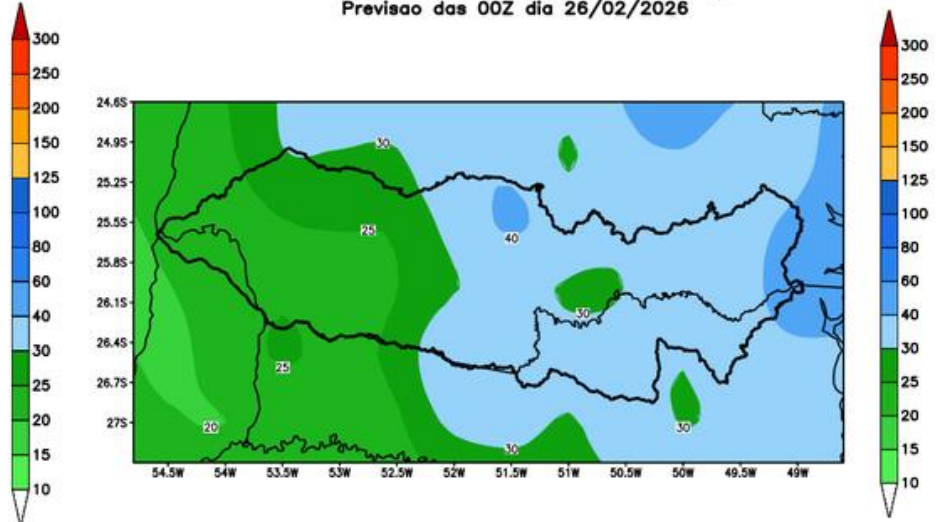


Bacia do Itaipu e Iguçu

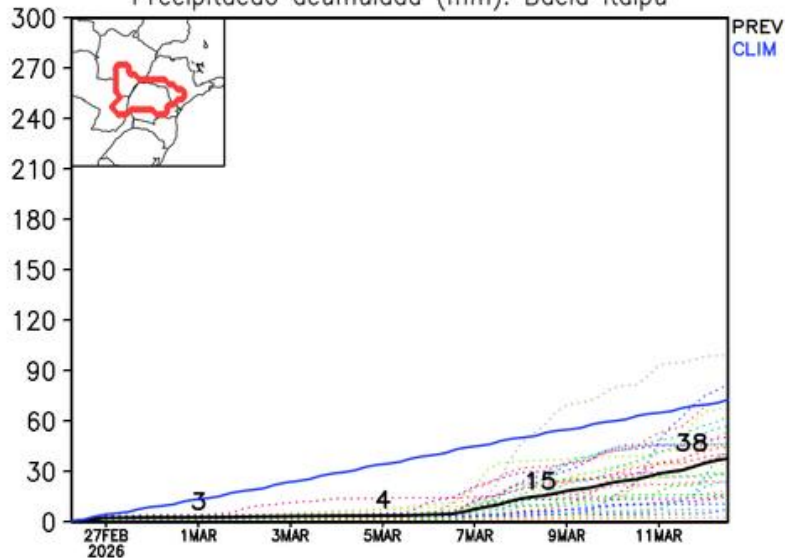
GEFS / Itaipu
Precipitacao acumulada em 14 dias (mm)
Previsao das 00Z dia 26/02/2026



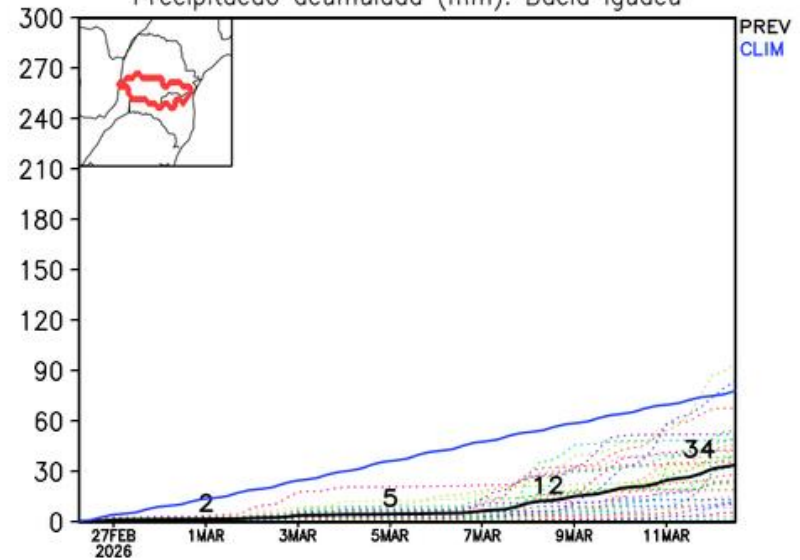
GEFS / Bacia do Rio Iguacu
Precipitacao acumulada em 14 dias (mm)
Previsao das 00Z dia 26/02/2026



Precipitacao acumulada (mm): Bacia Itaipu

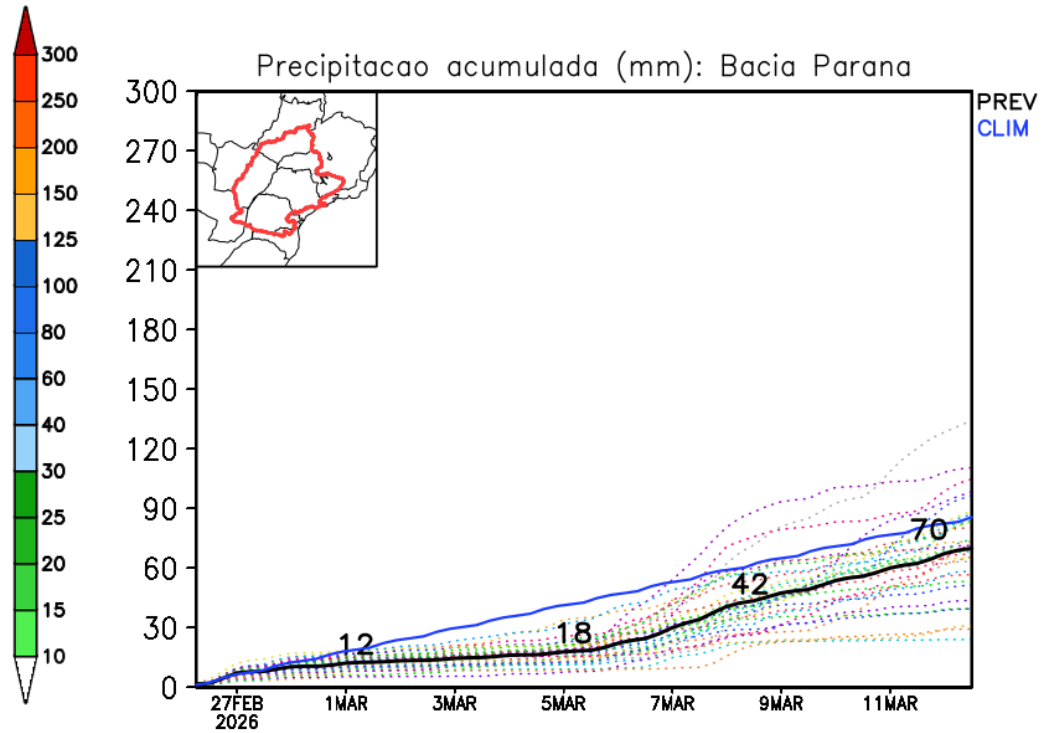
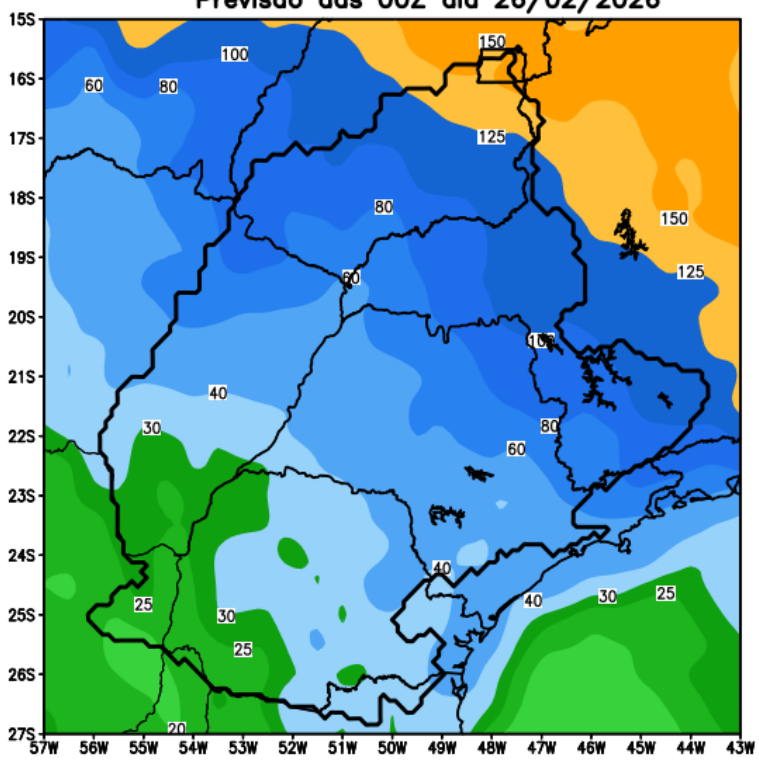


Precipitacao acumulada (mm): Bacia Iguacu



Previsão de chuva para os próximos 14 dias

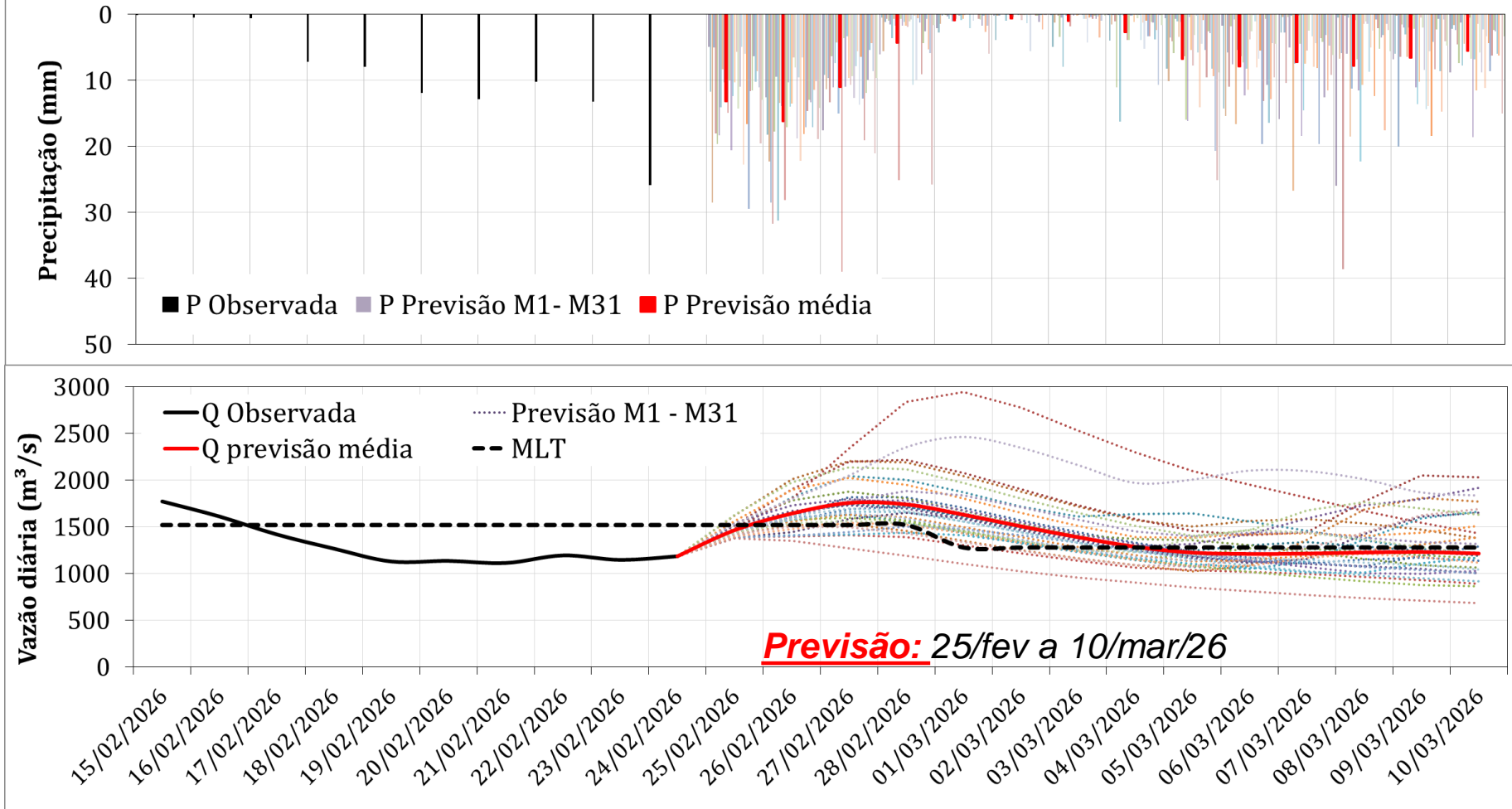
GEFS / Bacia do Parana
Precipitacao acumulada em 14 dias (mm)
Previsao das 00Z dia 26/02/2026



Fonte: GEFS/NOAA

Furnas: Previsão de Vazão para próximos 14 dias (modelo hidrológico PDM-CEMADEN)

Vazão Natural e Precipitação Diárias para Furnas
15/Fevereiro a 10/Março/2025



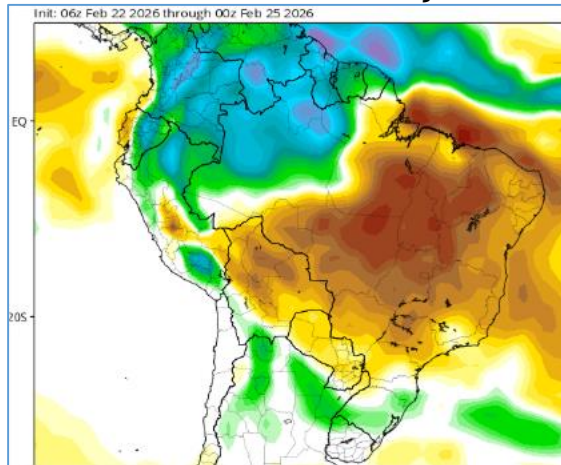
Previsão média para os próximos 14 dias: **1410 m³/s**



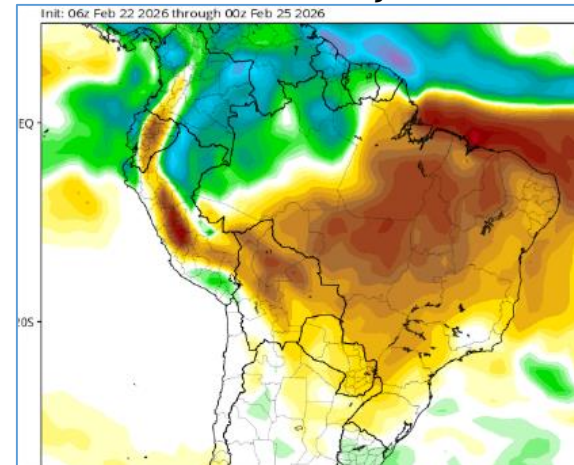
110% MLT Março

Tendência 3a e 4a semanas

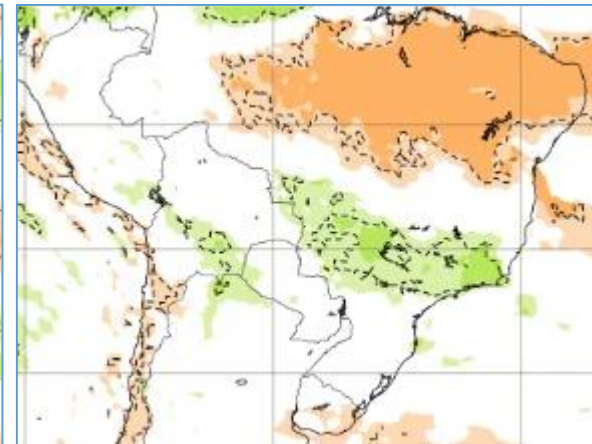
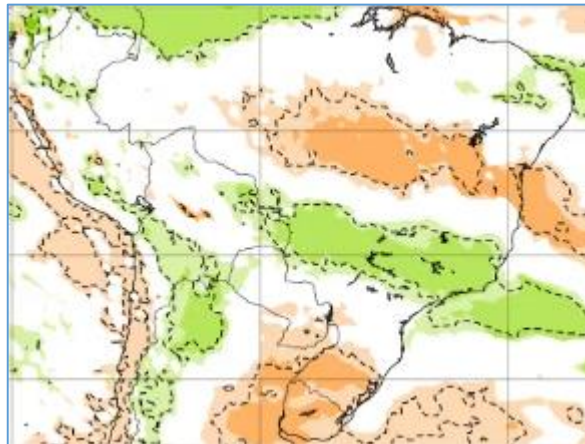
11-18 março



18-25 março



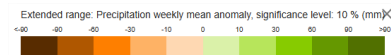
Centro Americano
CFS/NOAA



Centro Europeu
ECMWF

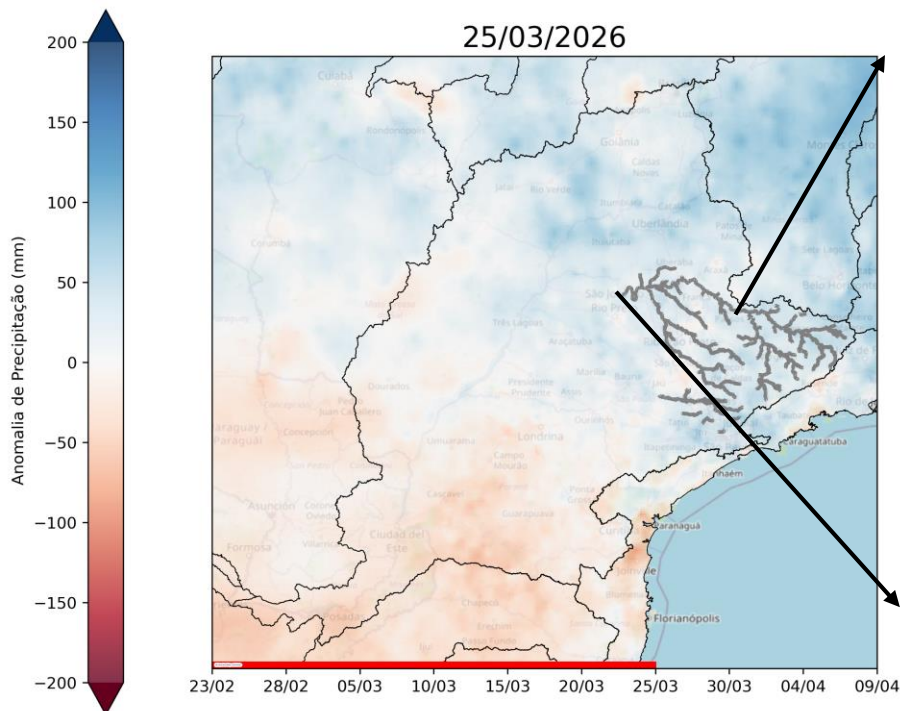
09-16 Março

16-23 Março

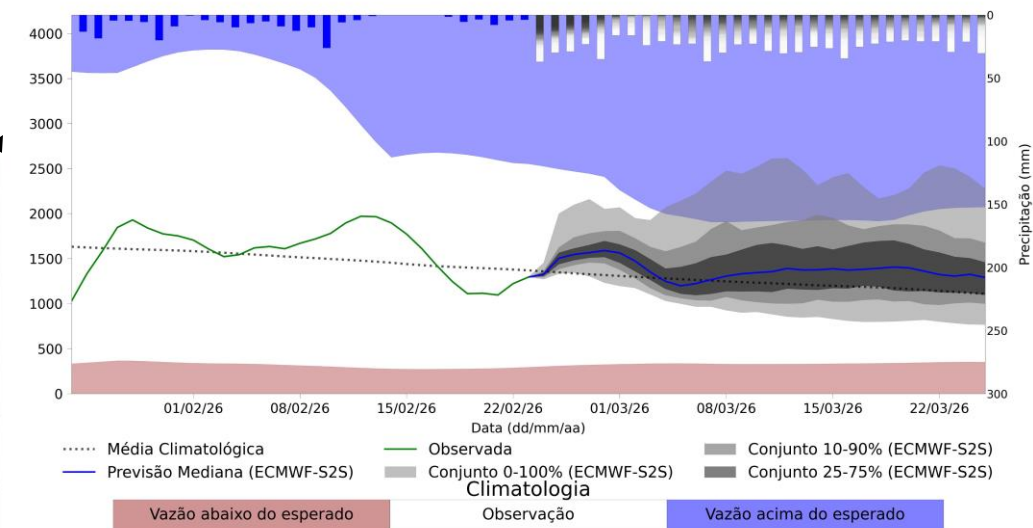


Previsão de vazão natural na Bacia do Rio Grande

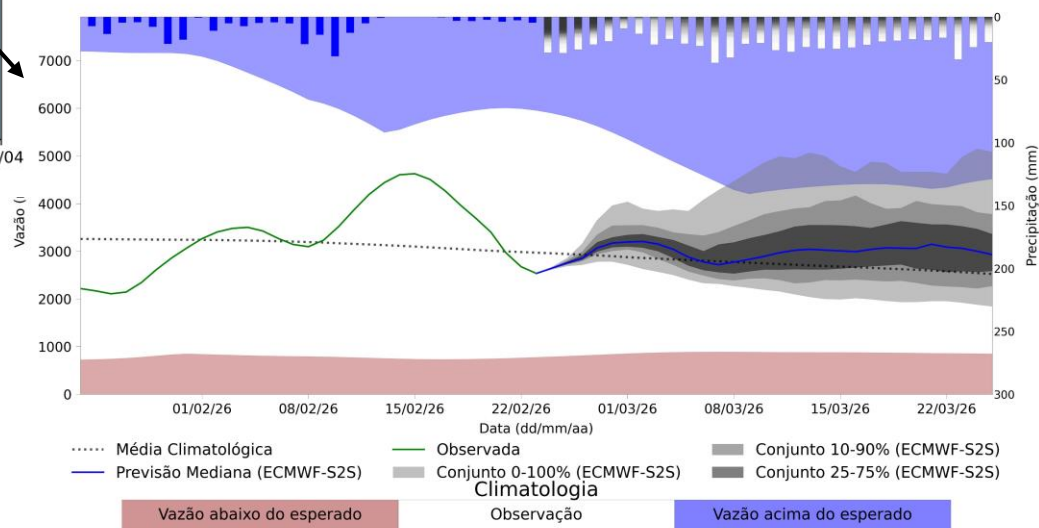
PREVISÃO: 23/02/26 a 25/03/26



UHE Furnas



UHE Marimbondo



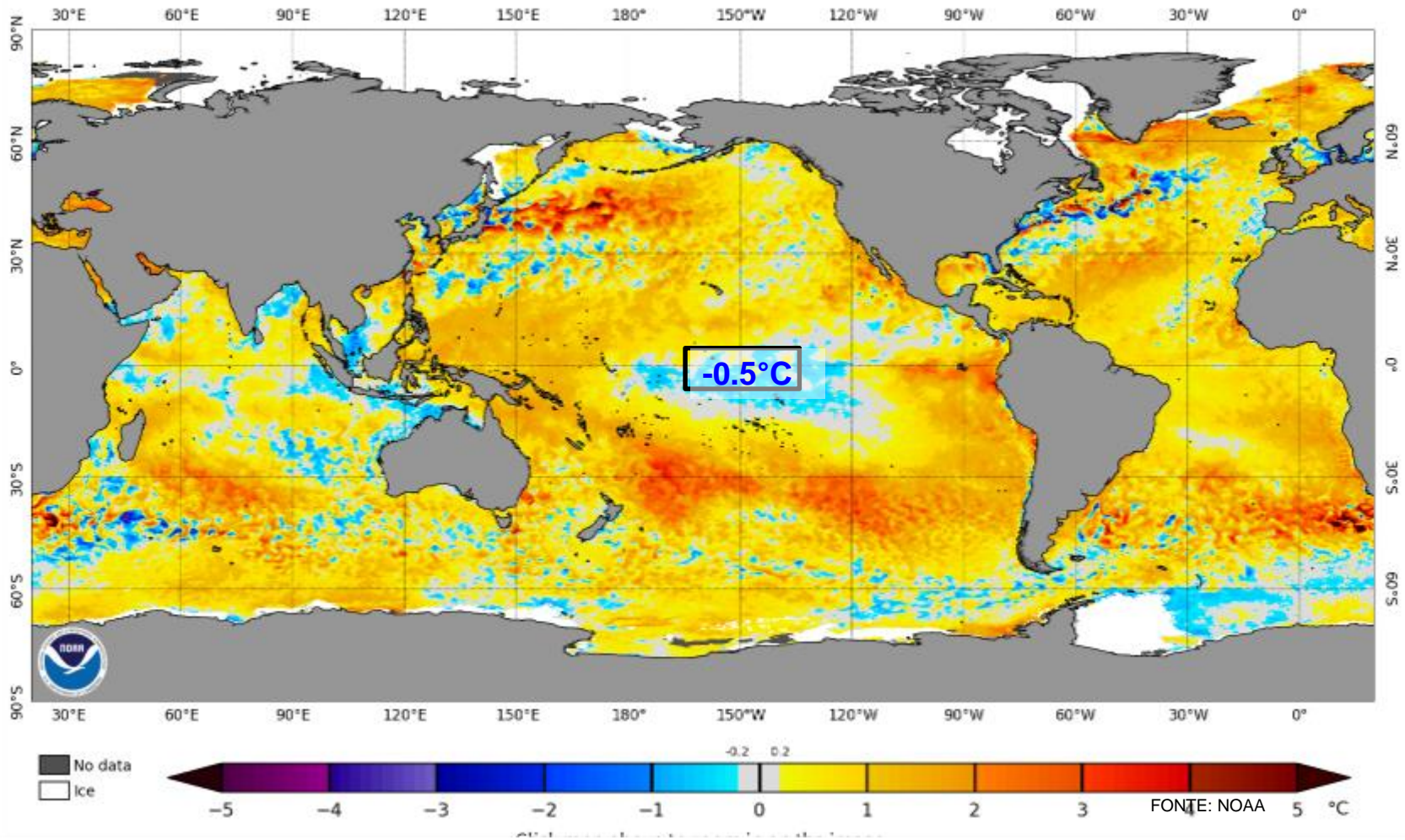
Fonte: Meteorologia (INMET/MERGE); Vazão (ANA/ONS)

MLT: 1993-2024

Previsão Meteorológica: ECMWF-S2S

Status Atual: La Niña

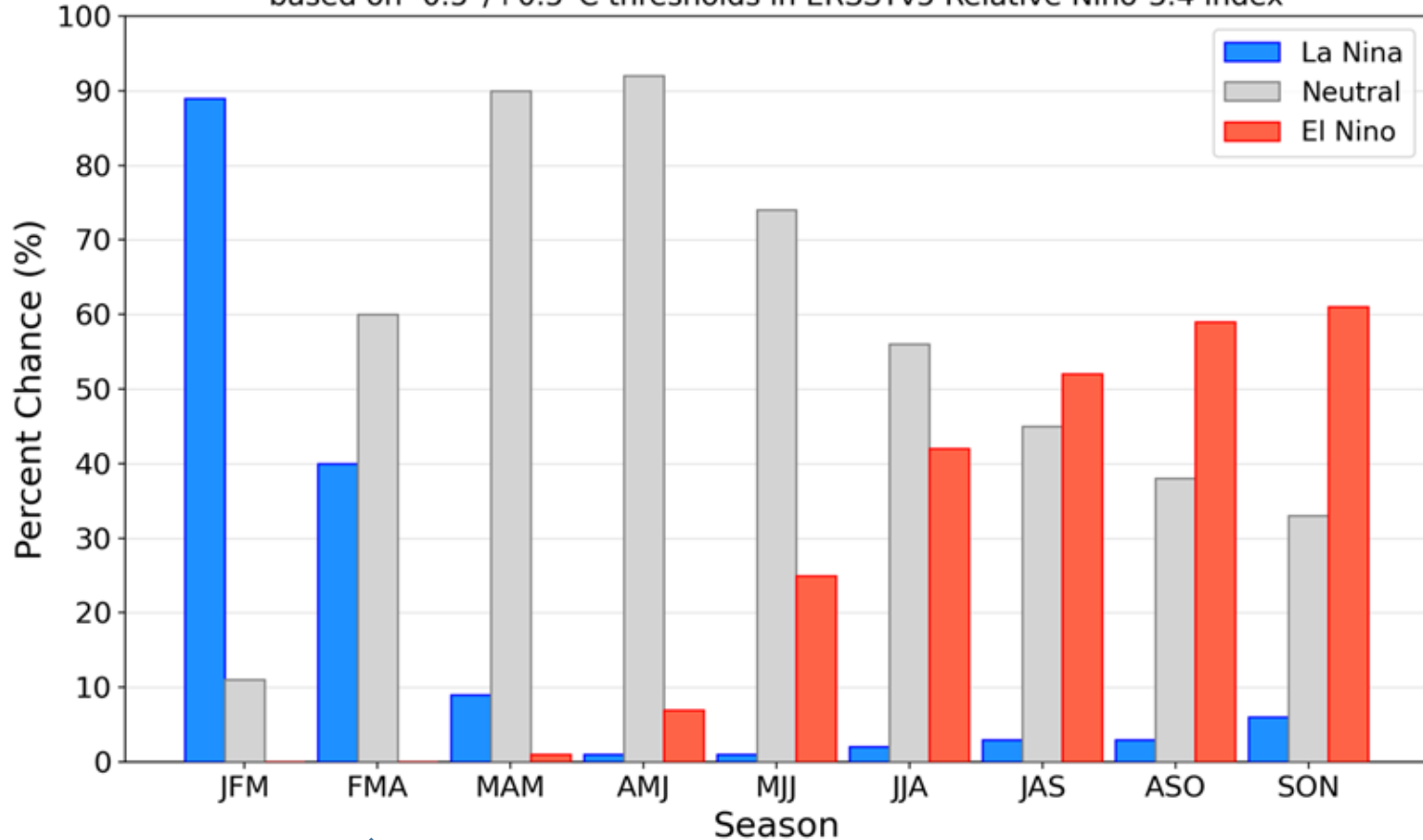
NOAA Coral Reef Watch Daily 5km SST Anomalies (v3.1) 23 Feb 2026



Previsão do “ENSO”

Official NOAA CPC ENSO Probabilities (issued February 2026)

based on $-0.5^{\circ}/+0.5^{\circ}\text{C}$ thresholds in ERSSTv5 Relative Niño-3.4 index

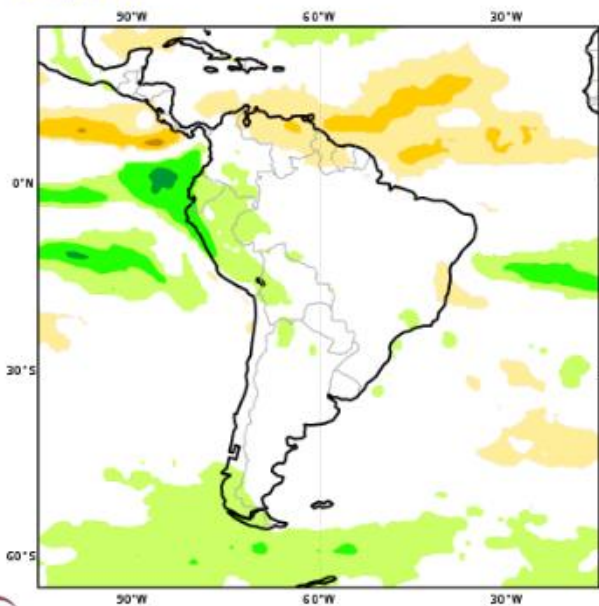


Previsão Sazonal de Chuva Multi-Modelo

Março-Abril-Maio

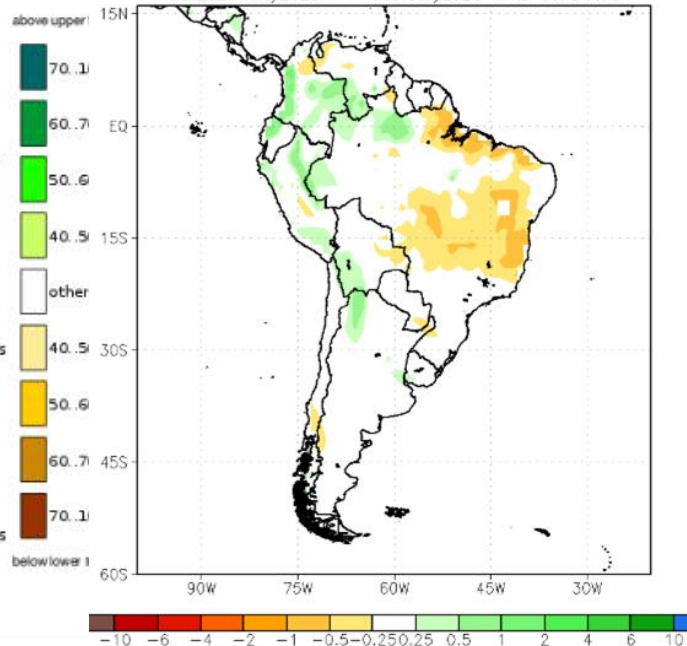
C3S multi-system seasonal forecast
Prob(most likely category of precipitation)
Nominal forecast start: 01/02/26
Unweighted mean

MAM 2026

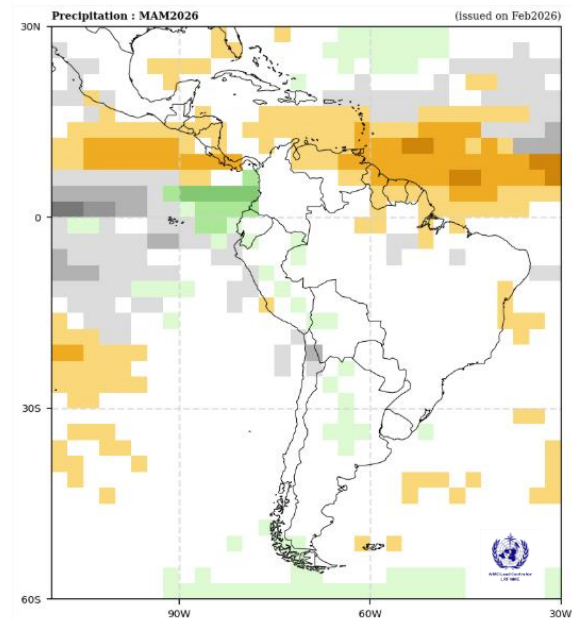


Modelos "Europeus"

NMME Precipitation Anomalies (mm/day)
Mar2026-May2026 February2026 initial conditions



Modelos Norte Americanos

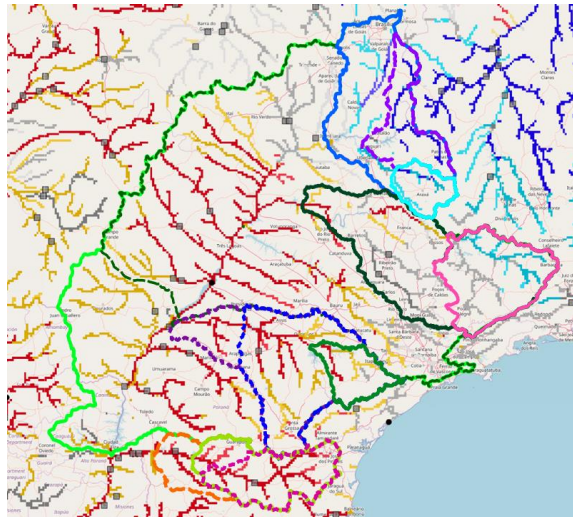


Modelos da WMO

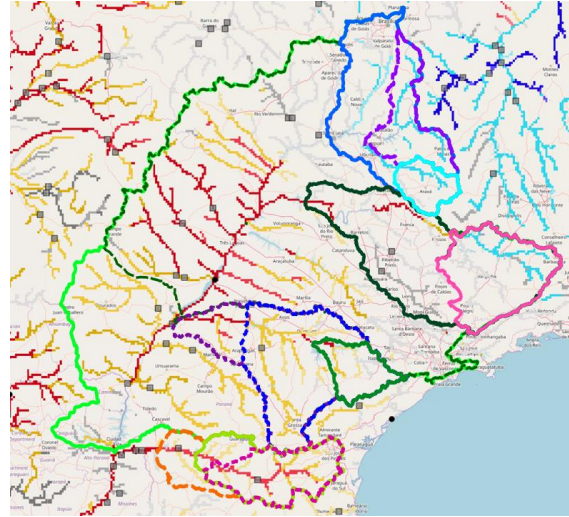
Previsão Sub-sazonal (45 dias) de vazão natural para a Bacia do Rio Paraná (GloFAS)

Previsão: 02/03/2026 – 06/04/2026

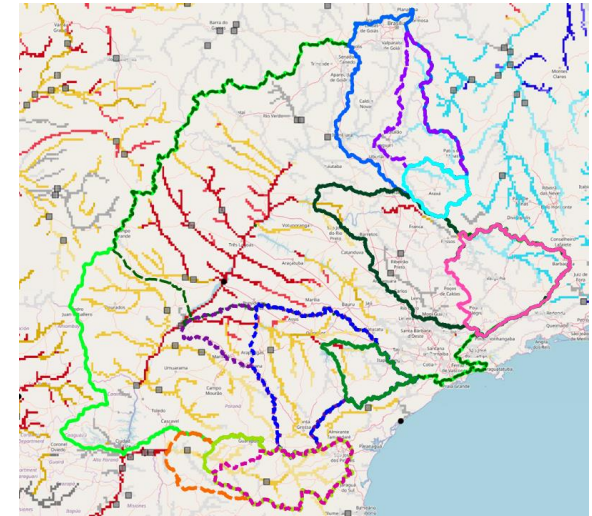
03/03/2026-09/03/2026



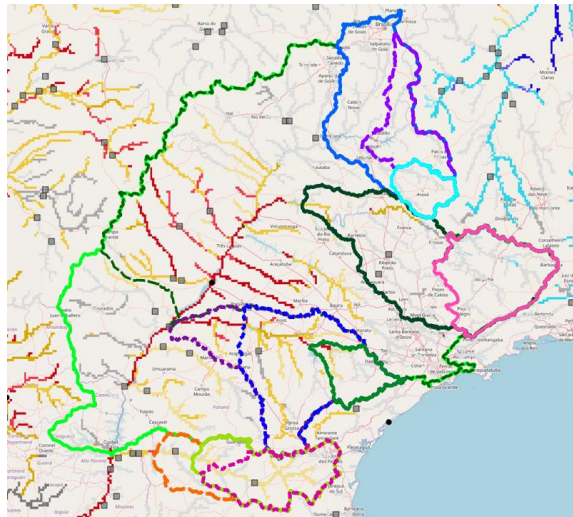
10/03/2026-16/03/2026



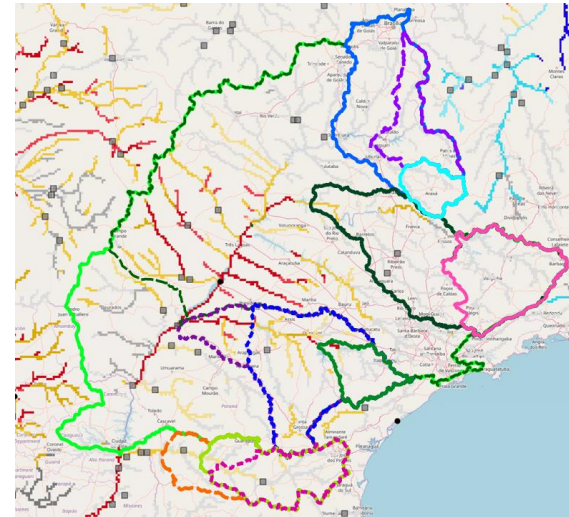
17/03/2026-23/03/2026



24/03/2026-30/03/2026



31/03/2026-06/04/2026



- █ Bacia UHE Jurumirim
- █ Bacia UHE Nova Ponte
- █ Bacia UHE Furnas
- █ Bacia UHE Segredo
- █ Bacia UHE Marimbondo
- █ Bacia UHE Emborcação
- █ Bacia UHE Salto Santiago
- █ Bacia UHE Capivara
- █ Bacia UHE Salto Caxias
- █ Bacia UHE Rosana
- █ Bacia UHE Itumbiara
- █ Bacia UHE Porto Primavera
- █ Bacia UHE Itaipu

Categoria de anomalia de vazões (percentil)

Muito abaixo (1-10)

Abaixo (10-25)

Média (25-75)

Acima (75-90)

Muito acima (90-100)

Categoria de incerteza

Baixa (0-10) Média (10-20) Alta (<20)



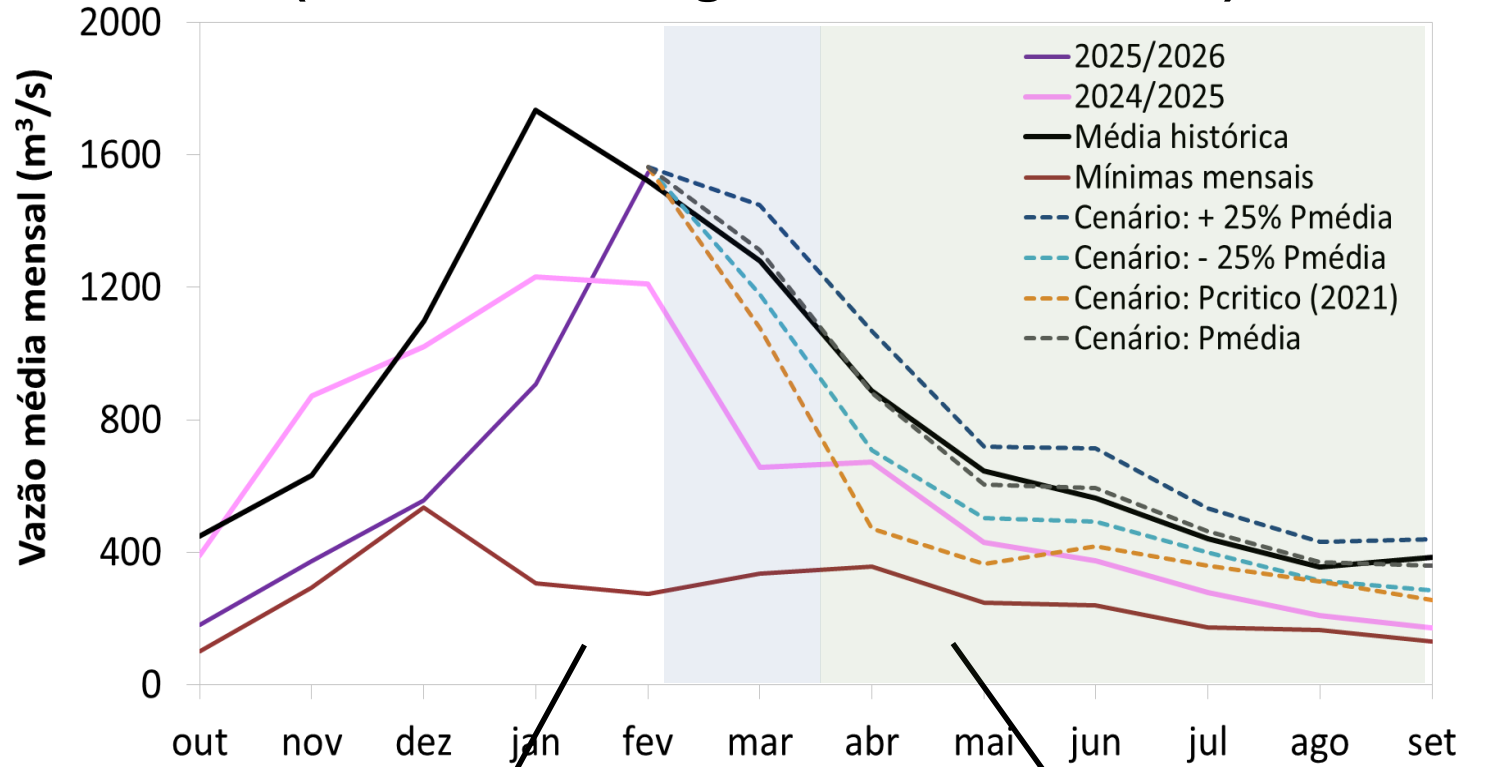
Fonte: Previsão Meteorológica: ECMWF

Previsão de vazão: Lisflood/GloFAS Forecast

<https://www.globalfloods.eu/glofas-forecasting/>



Furnas: Projeção de Vazão (modelo hidrológico PDM-CEMADEN)



Mar (Mês Chuvoso)

MLT: 1280 m³/s

Abr-Set (Meses Secos)

MLT: 546 m³/s

Vazão	% MLT
1449 m³/s	113%
1313 m³/s	103%
1181 m³/s	92%
1038 m³/s	81%

Vazão	% MLT
650 m³/s	119%
546 m³/s	100%
450 m³/s	82%
358 m³/s	66%