



CEMADEN

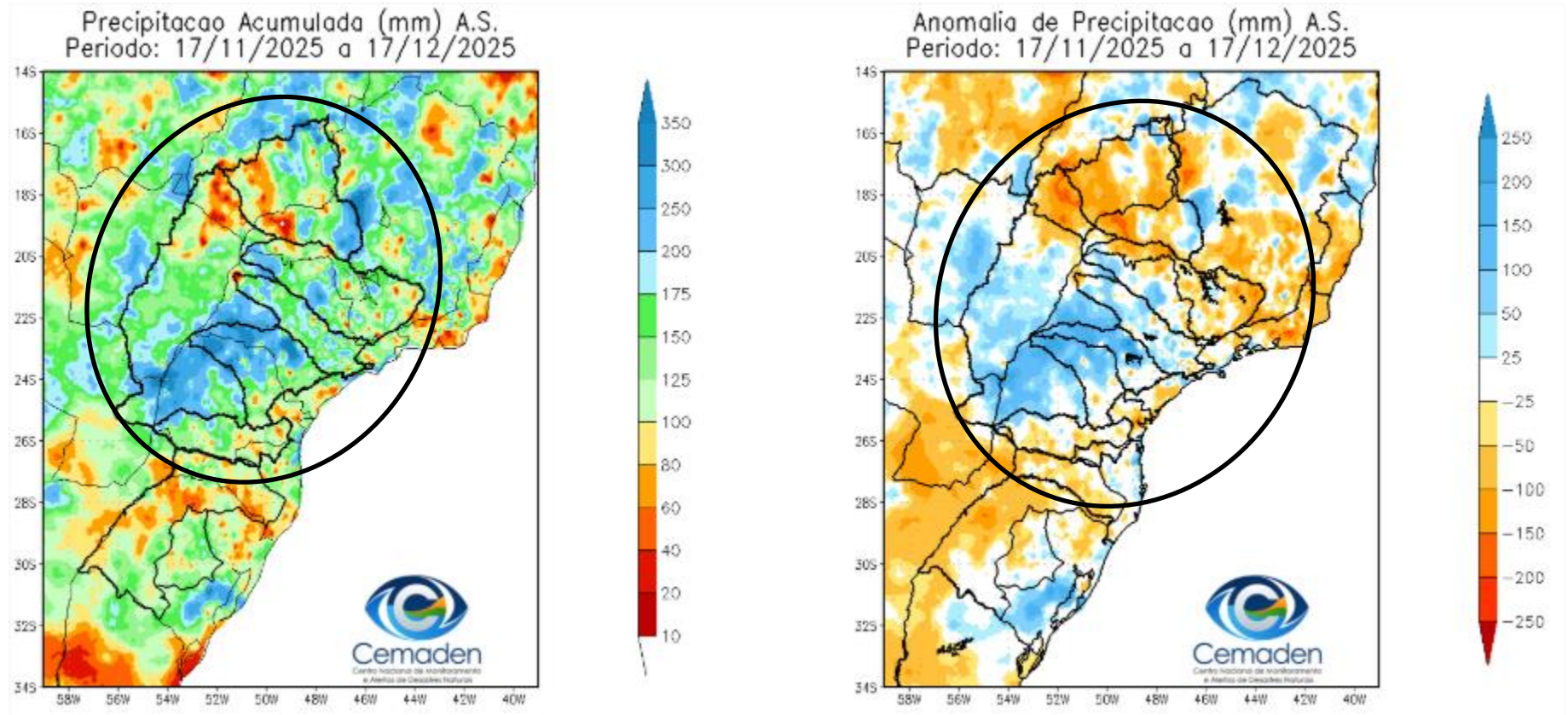
**Centro Nacional de Monitoramento e
Alertas de Desastres Naturais**

Monitoramento e Previsões para a Bacia do rio Paraná

Dezembro de 2025

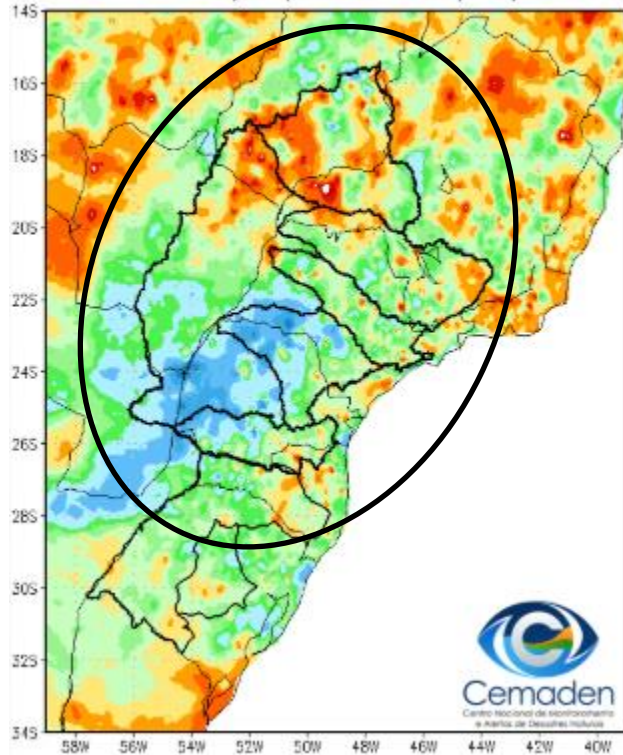


Precipitação acumulada nos últimos 30 dias

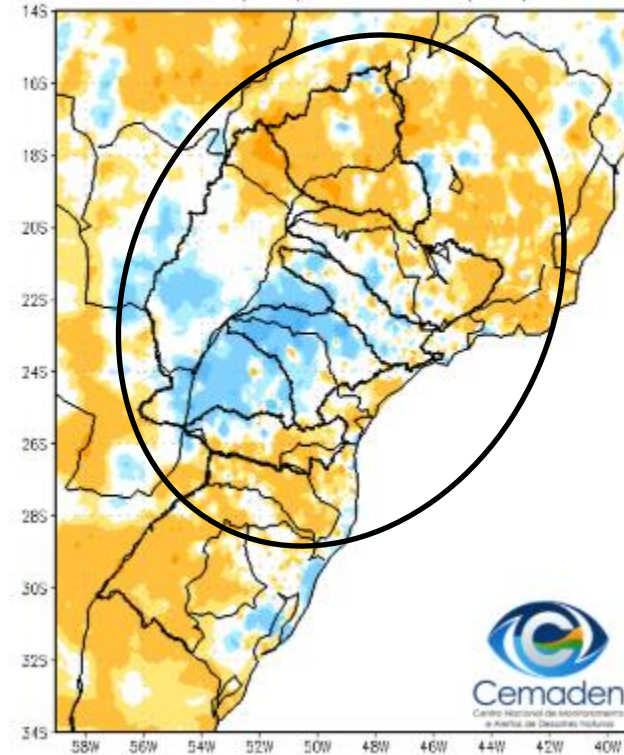


Precipitação acumulada no ano hidrológico

Precipitação Acumulada (mm) A.S.
Período: 01/10/2025 a 17/12/2025

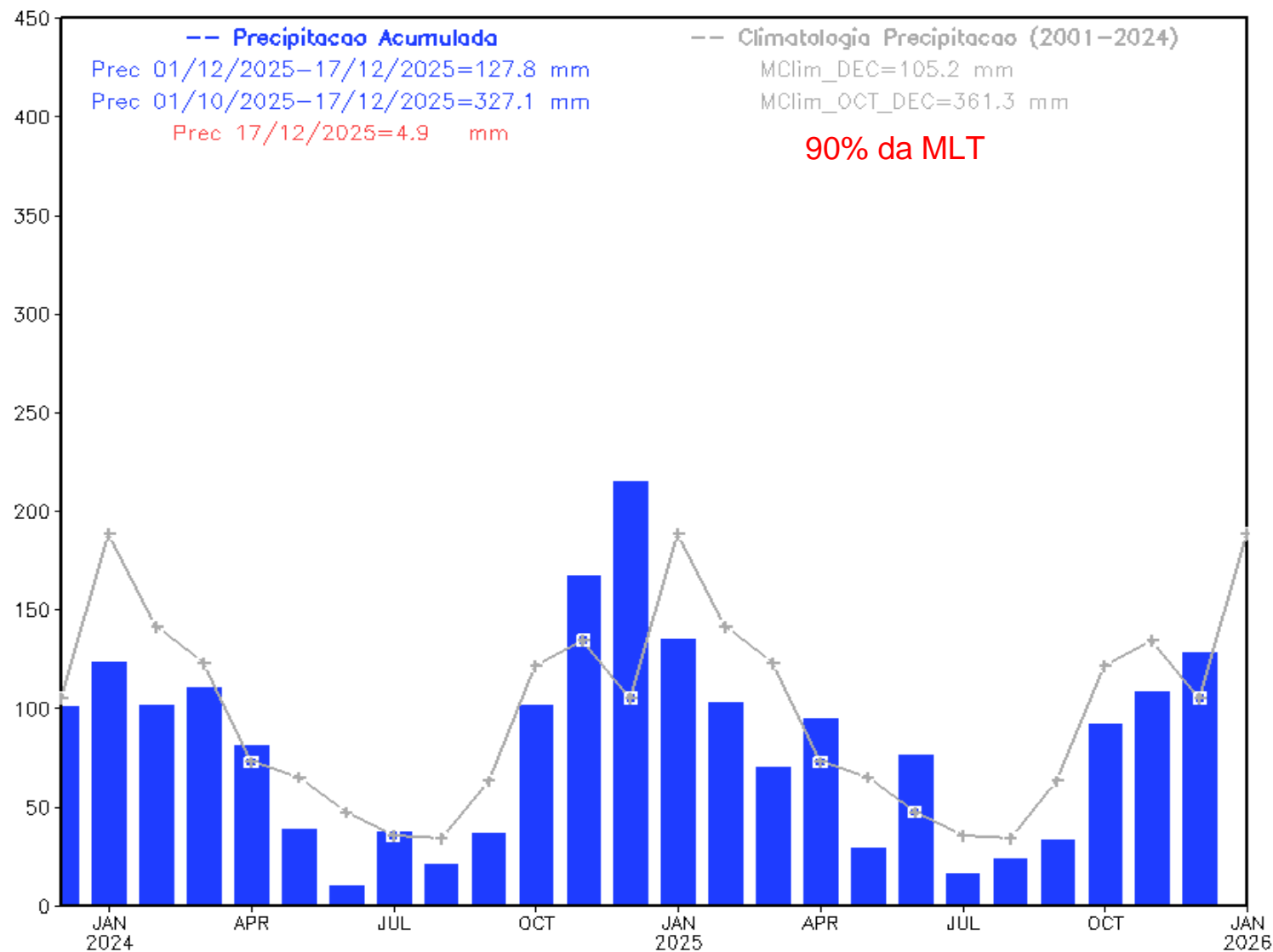


Anomalia de Precipitação (mm) A.S.
Período: 01/10/2025 a 17/12/2025



Precipitação acumulada nos últimos 24 meses

Precipitação Bacia do Rio Parana desde DEC 2023



Monitoramento UHE Furnas

Precipitação

Estação Chuvosa - Out a Mar – 1192 mm

2024/2025: 1148 mm (**96% da MLT**)

2025/2026*: 331 mm (**65% da MLT PARCIAL**)

Estação Seca - Abr a Set – 250 mm

2024: 102 mm (**41% da MLT**)

2025: 193 mm (**77% da MLT**)

Nov/2025: 146 mm (**82% da MLT**)

Dez/2025*: 111 mm (**82% da MLT PARCIAL**)

*Até 16/12/2025

Vazão

Estação Chuvosa - Out a Mar – 1130 m³/s

2024/2025: 897 m³/s (**79% da MLT**)

2025/2026**: 315 m³/s (**28% da MLT**)

Estação Seca - Abr a Set – 551 m³/s

2024: 309 m³/s (**56% da MLT**)

2025: 356 m³/s (**65% da MLT**)

Nov/25: 373 m³/s (**58% da MLT**)

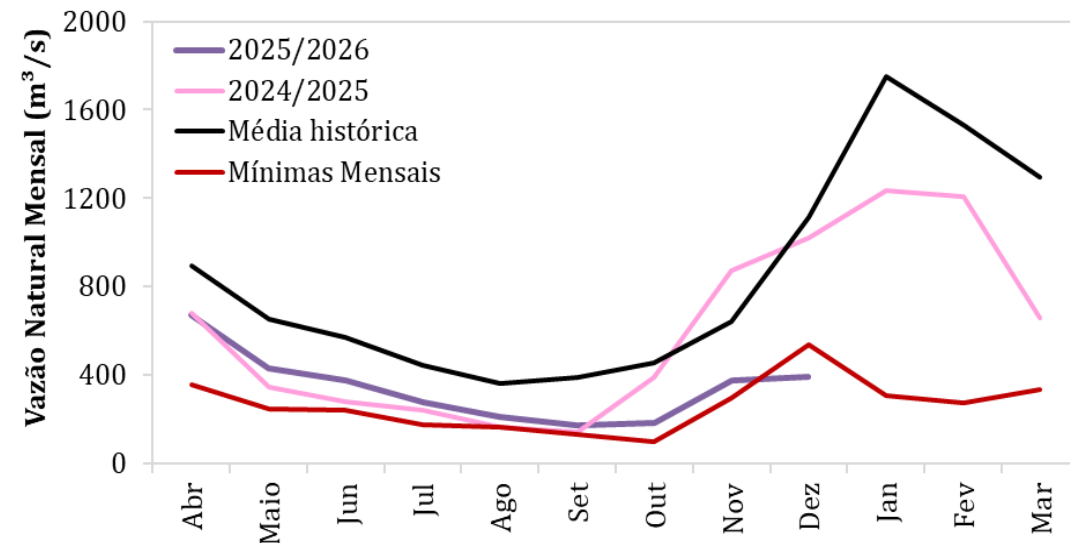
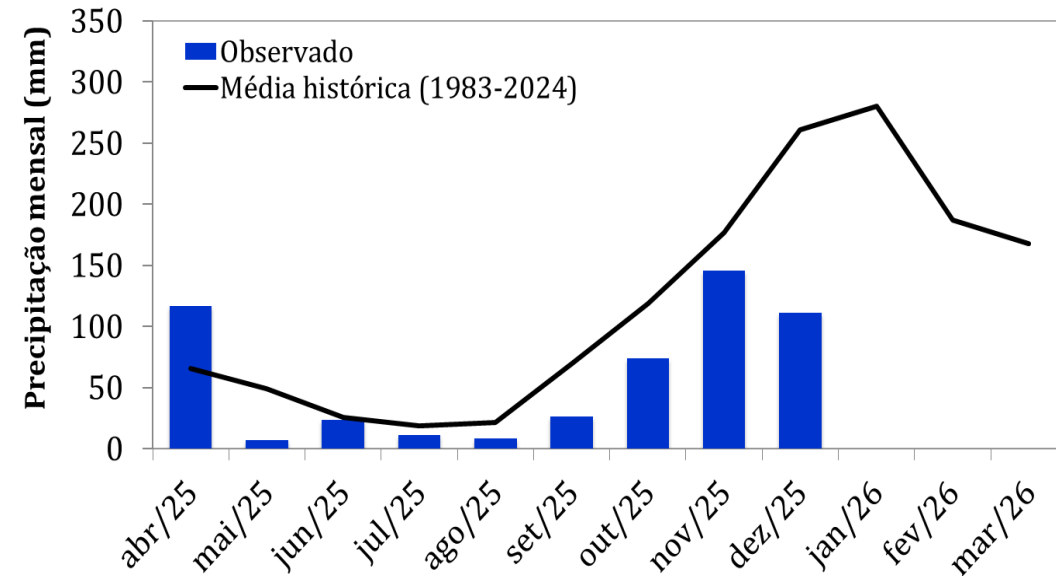
Dez/25:** 389 m³/s (**35% da MLT**)

16/Dez/25: 570 m³/s (**51% da MLT**)

**Até 16/12/2025

Dados de precipitação: INMET, ANA, CEMADEN

Dados de vazão: ONS e ANA

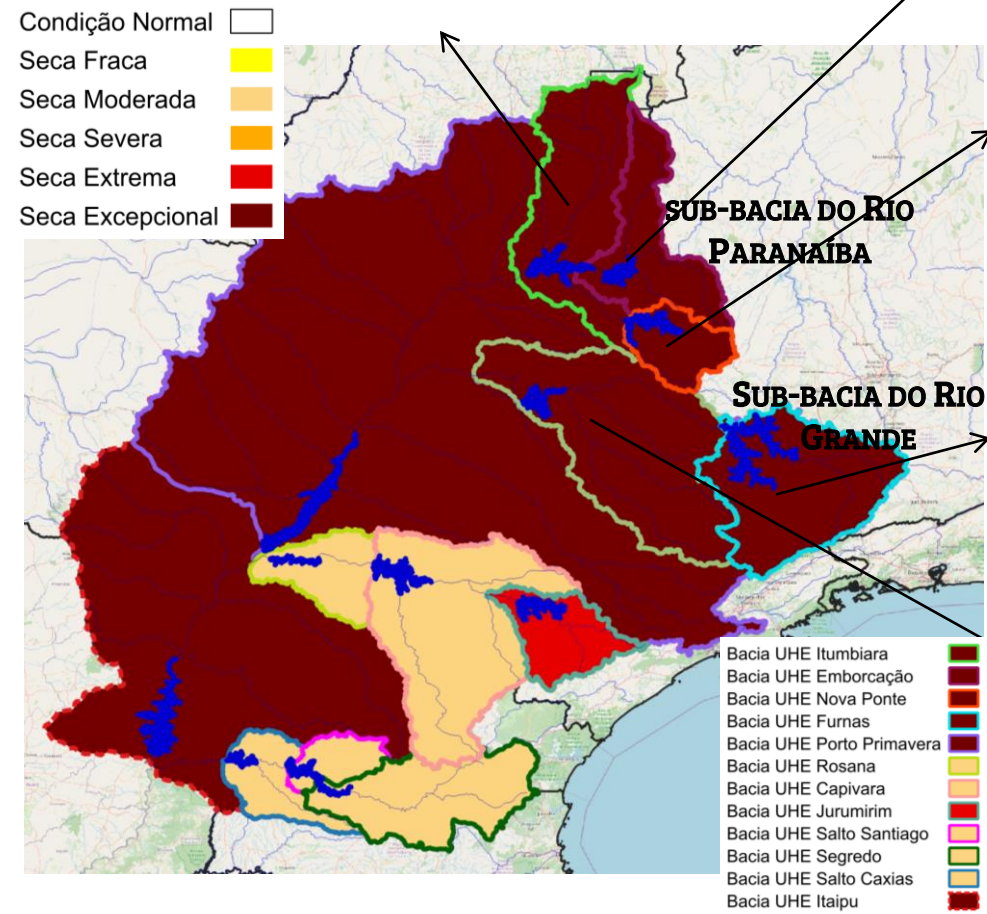
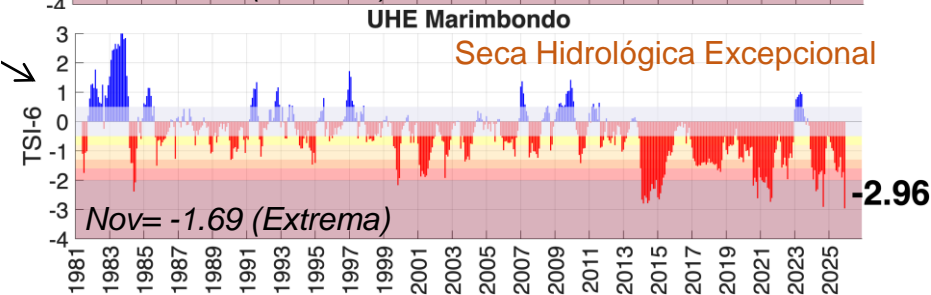
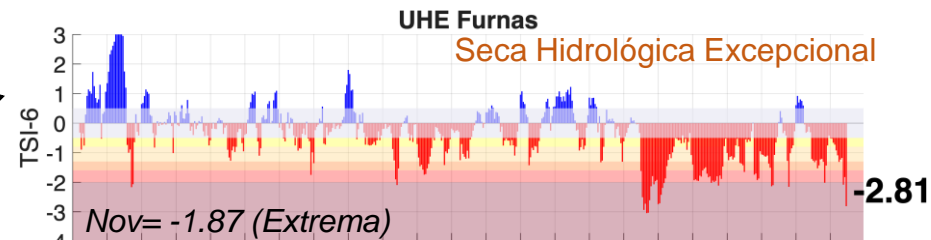
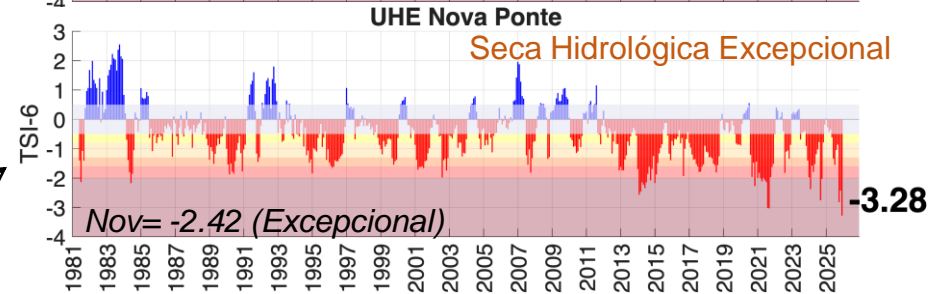
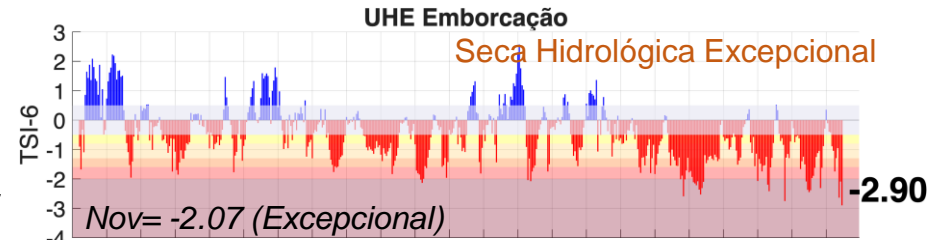
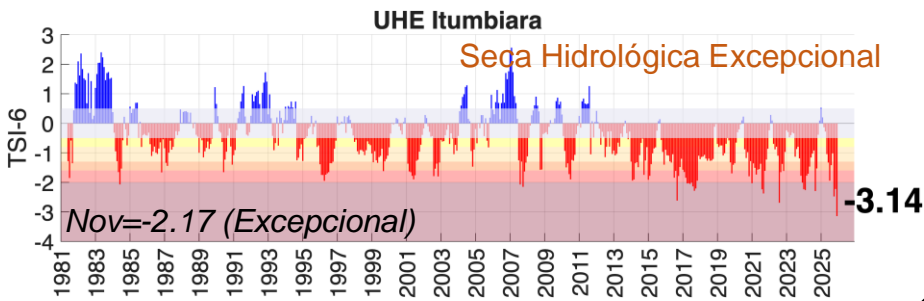


Média de Longo Termo – MLT = 1983-

BACIA DO RIO PARANÁ

Índice de Seca Bivariado (Chuva-Vazão) – TSI 6

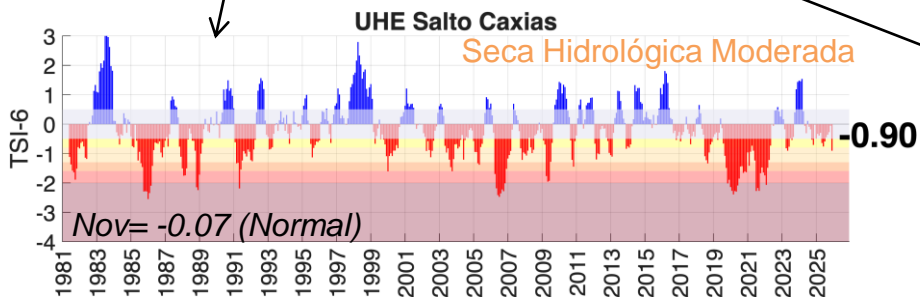
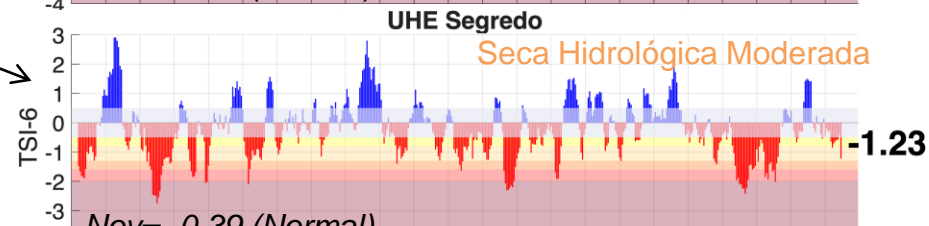
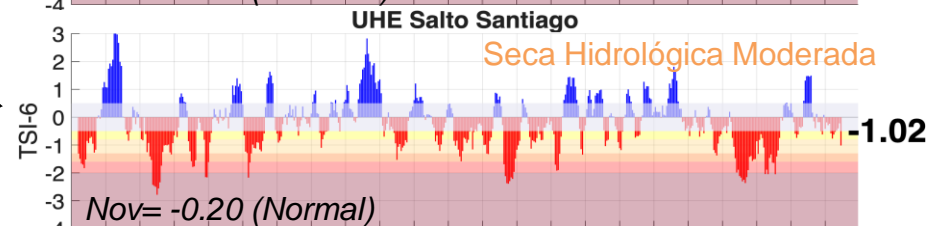
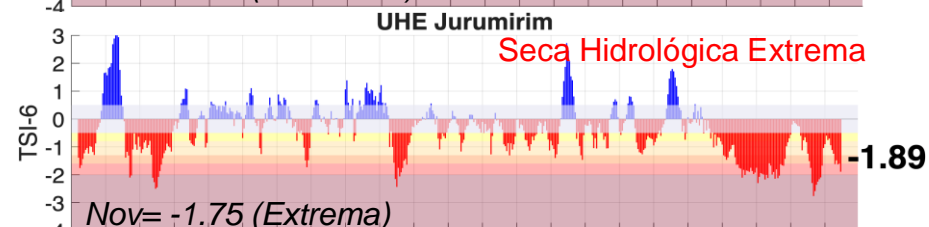
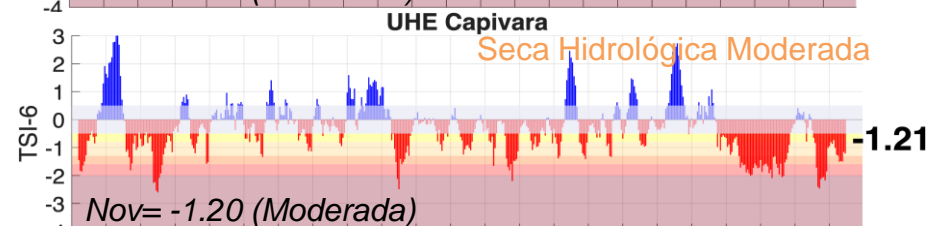
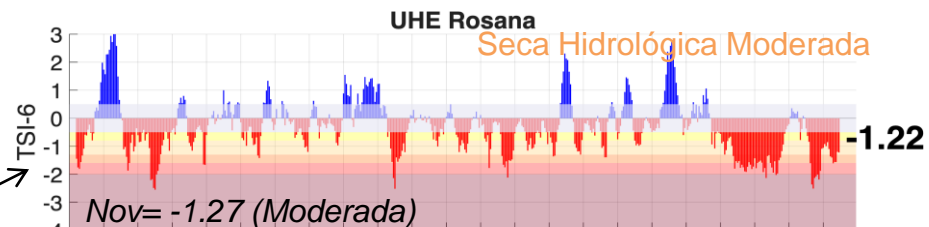
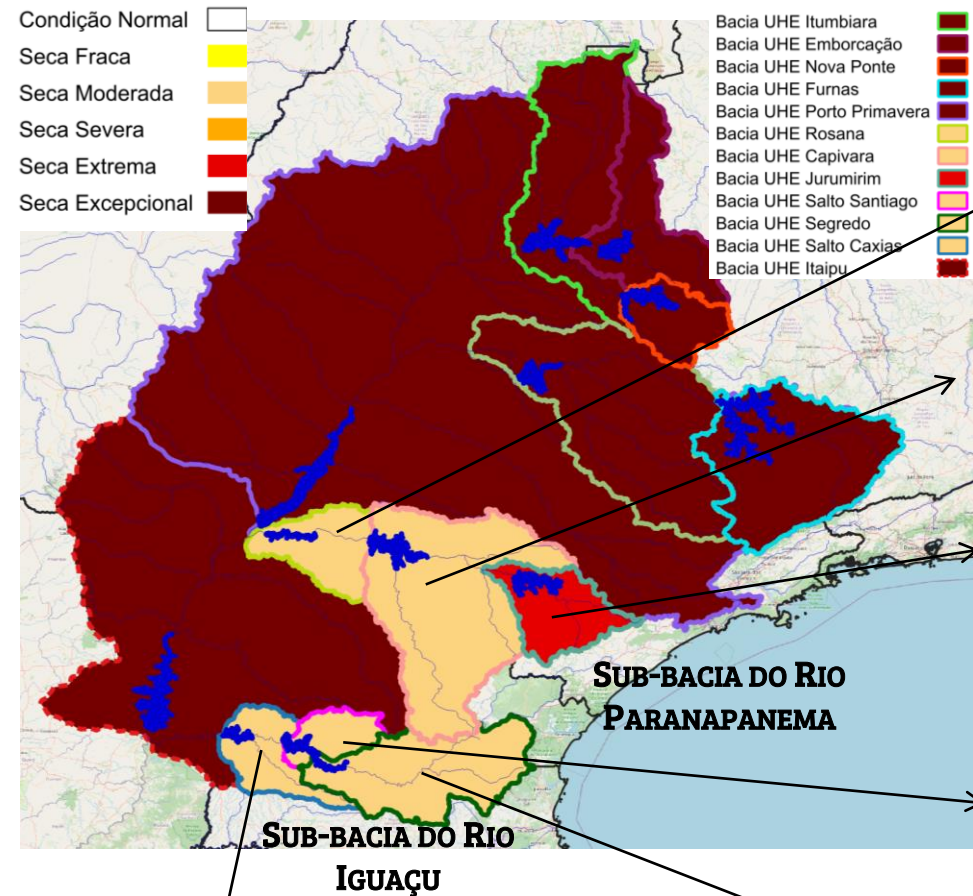
Dez/25 - Parcial



BACIA DO RIO PARANÁ

Índice de Seca Bivariado (Chuva-Vazão) – TSI 6

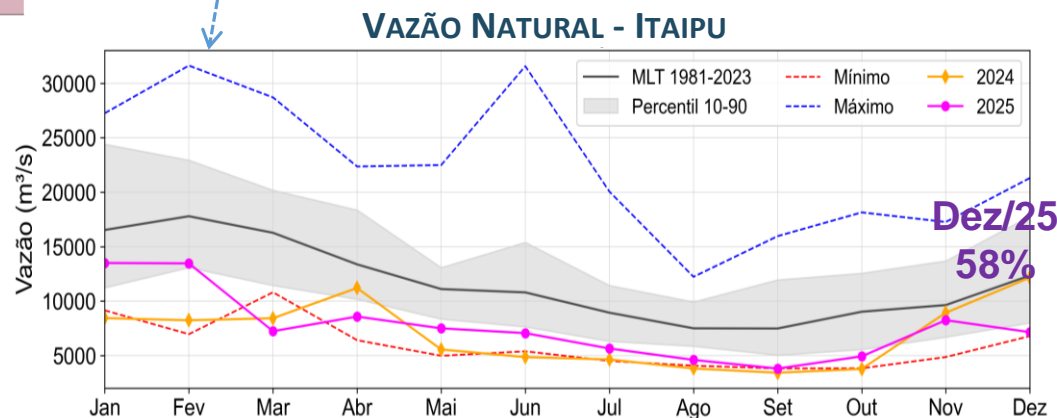
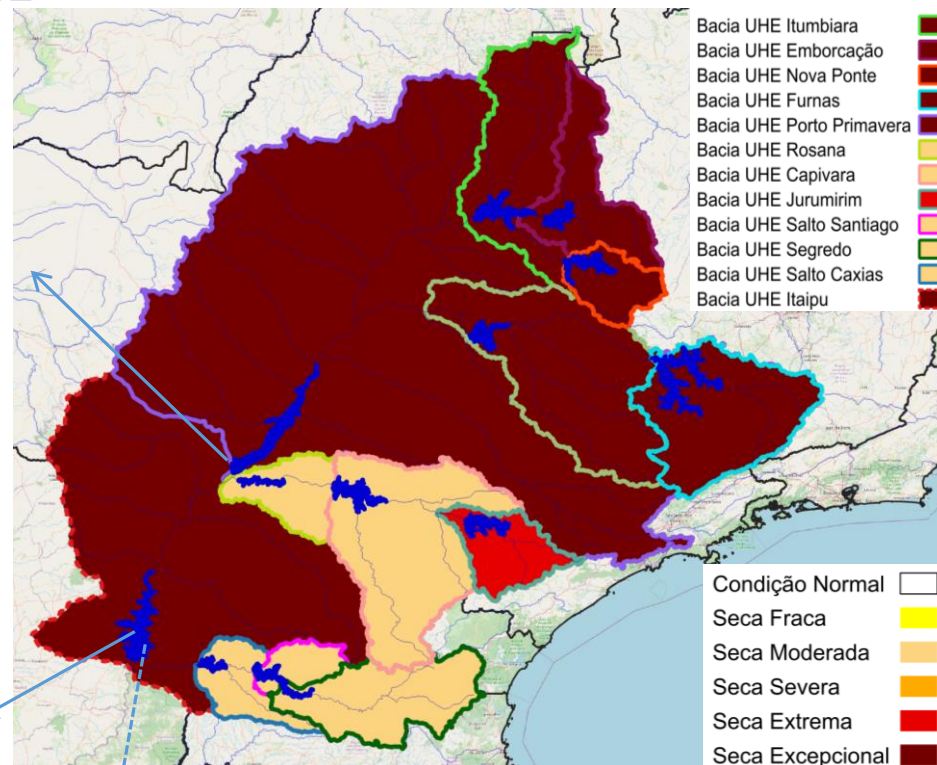
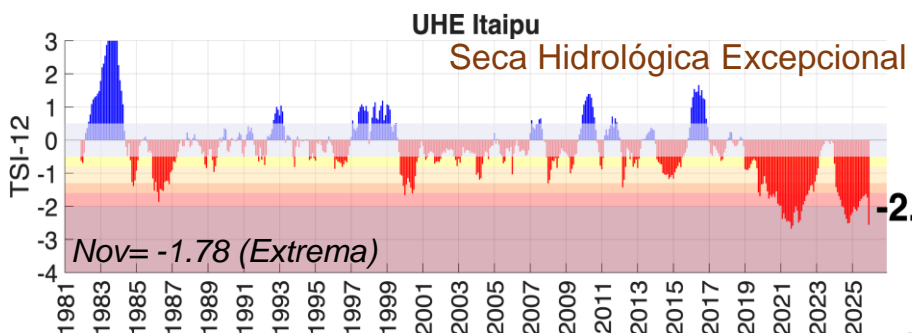
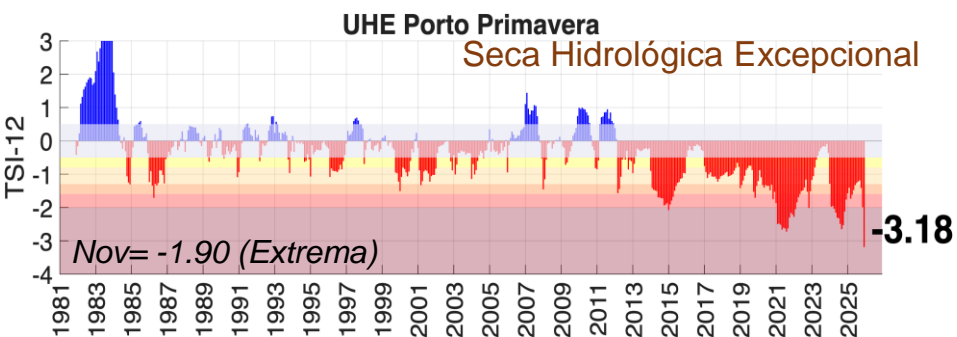
Dez/25 - Parcial



BACIA DO RIO PARANÁ

Índice de Seca Bivariado (Chuva-Vazão) – TSI 12

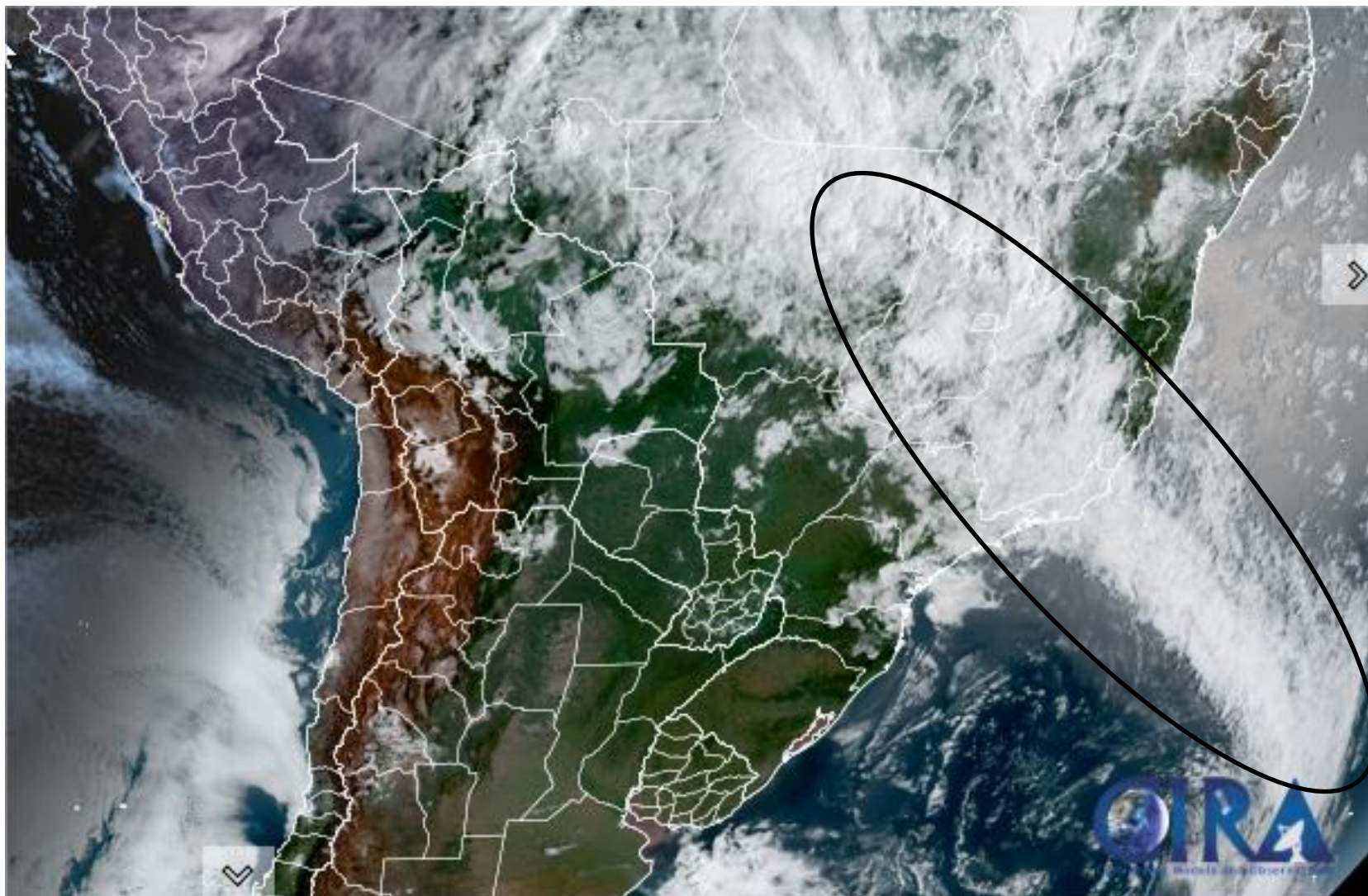
Dez/25 - Parcial



Fonte: CEMADEN/MCTI

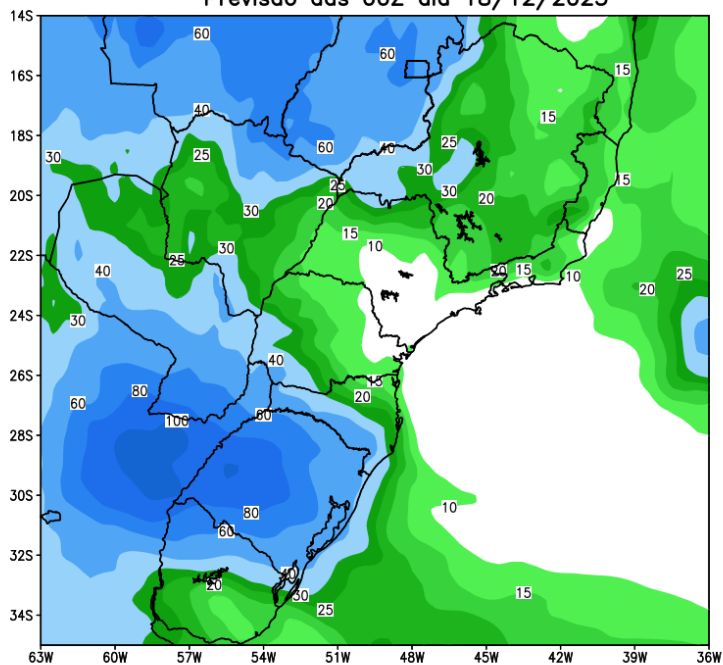
Dados: Precipitação (CHIRPS) e Vazão (ONS e ANA) Período: Jan/1981 – Dez/2025

Situação meteorológica atual

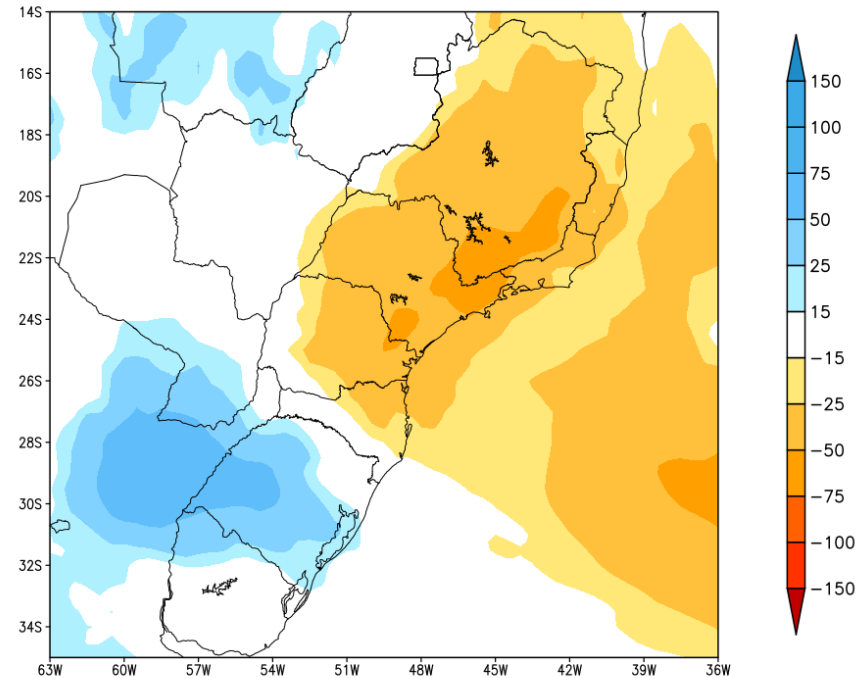


Previsão de chuva para os próximos 7 dias

GEFS / BRASIL_SUL
Precipitação acumulada 1aSem (mm)
Previsão das 00Z dia 18/12/2025

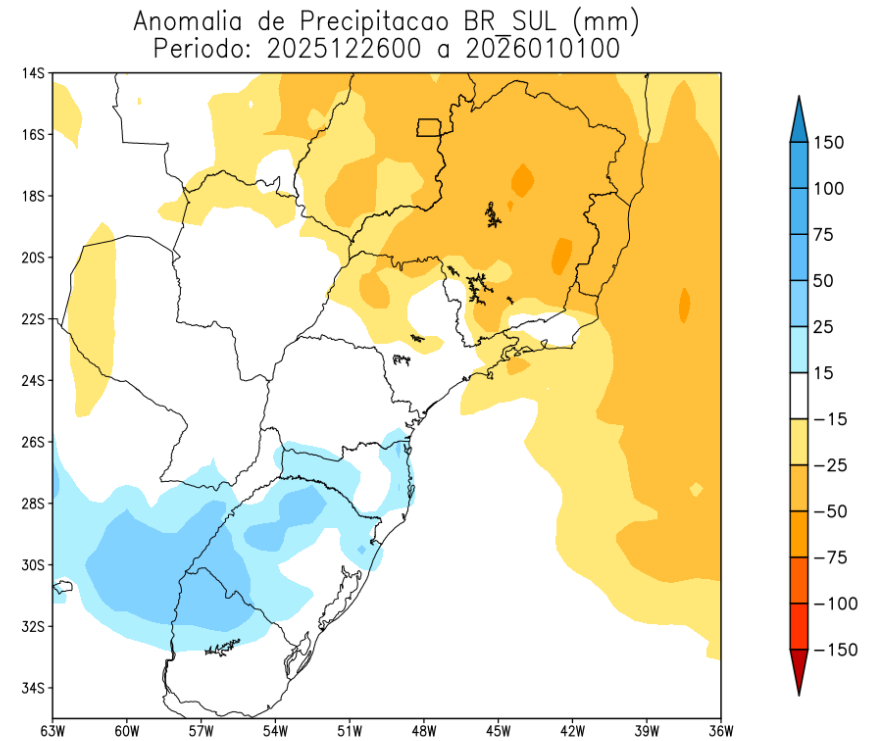
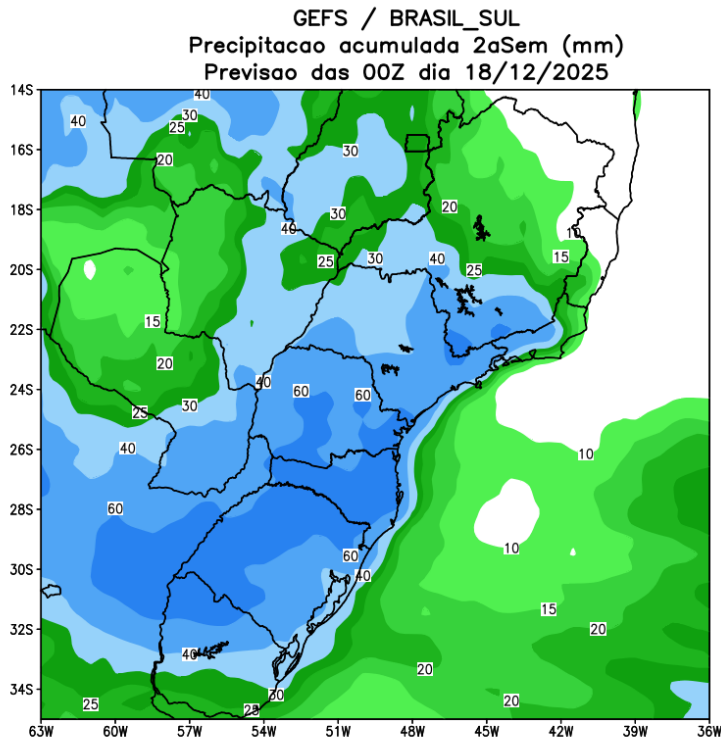


Anomalia de Precipitação BR SUL (mm)
Período: 2025121800 a 2025122500



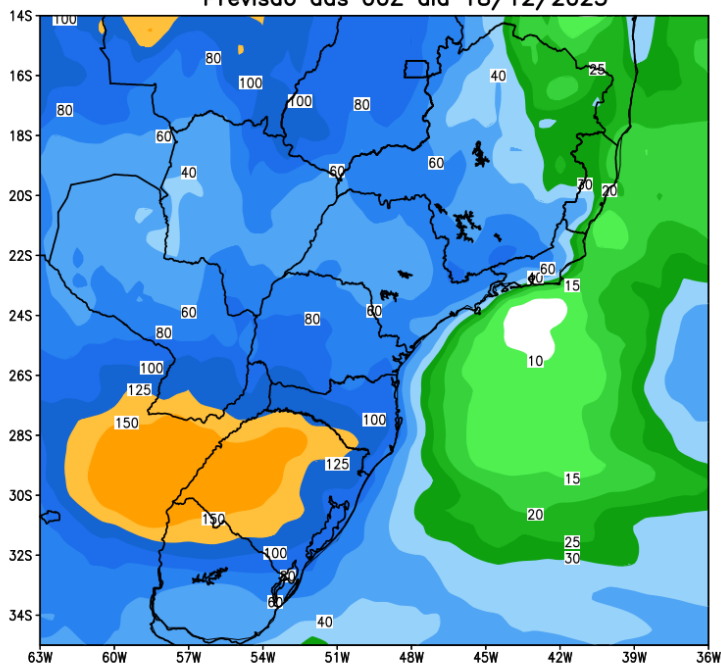
Fonte: GEFS/NOAA

Tendência para a 2ª Semana

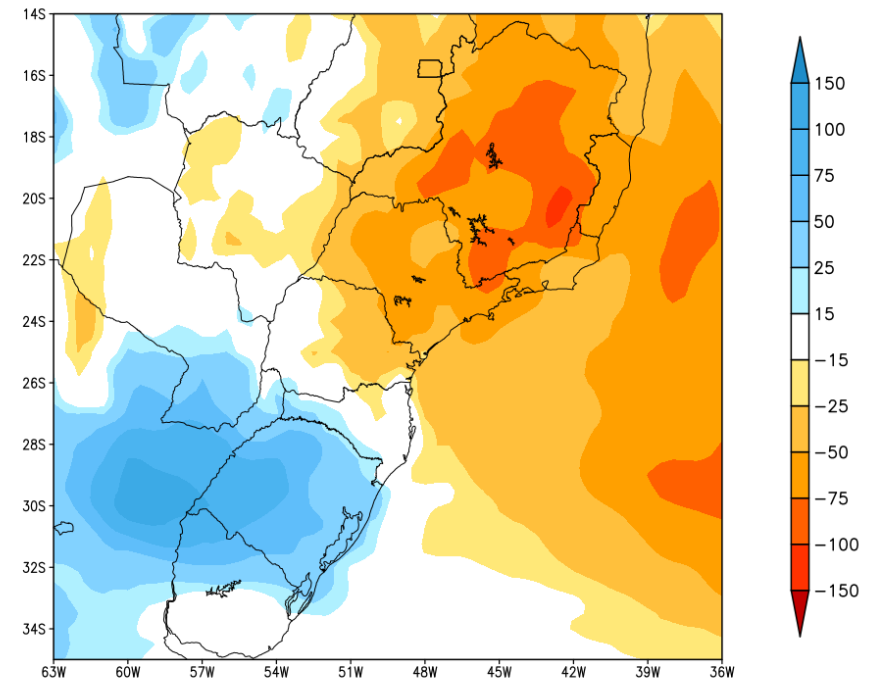


Acumulado para as duas próximas semanas

GEFS / BRASIL_SUL
Precipitacao acumulada 14dias (mm)
Previsao das 00Z dia 18/12/2025

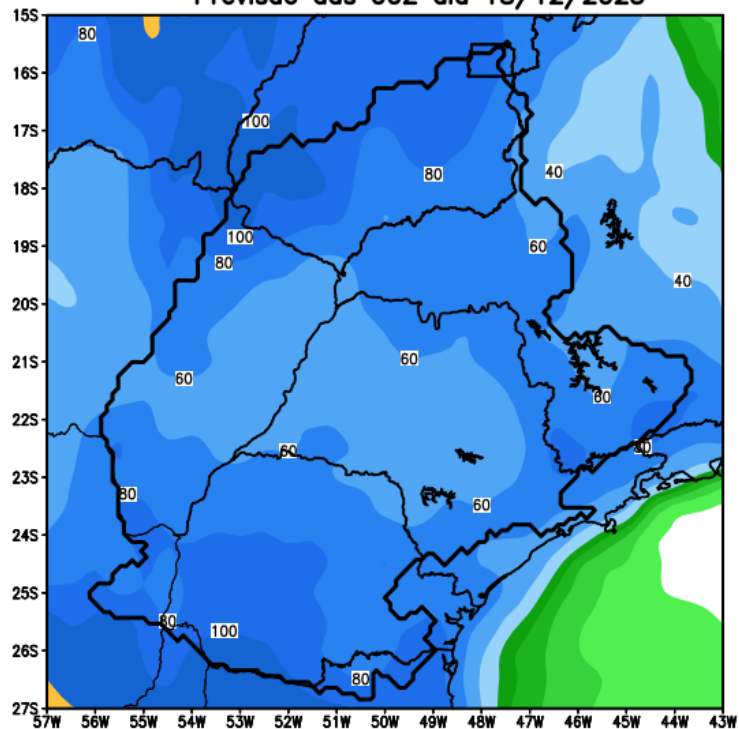


Anomalia de Precipitacao BR SUL (mm)
Periodo: 2025121800 a 2026010100

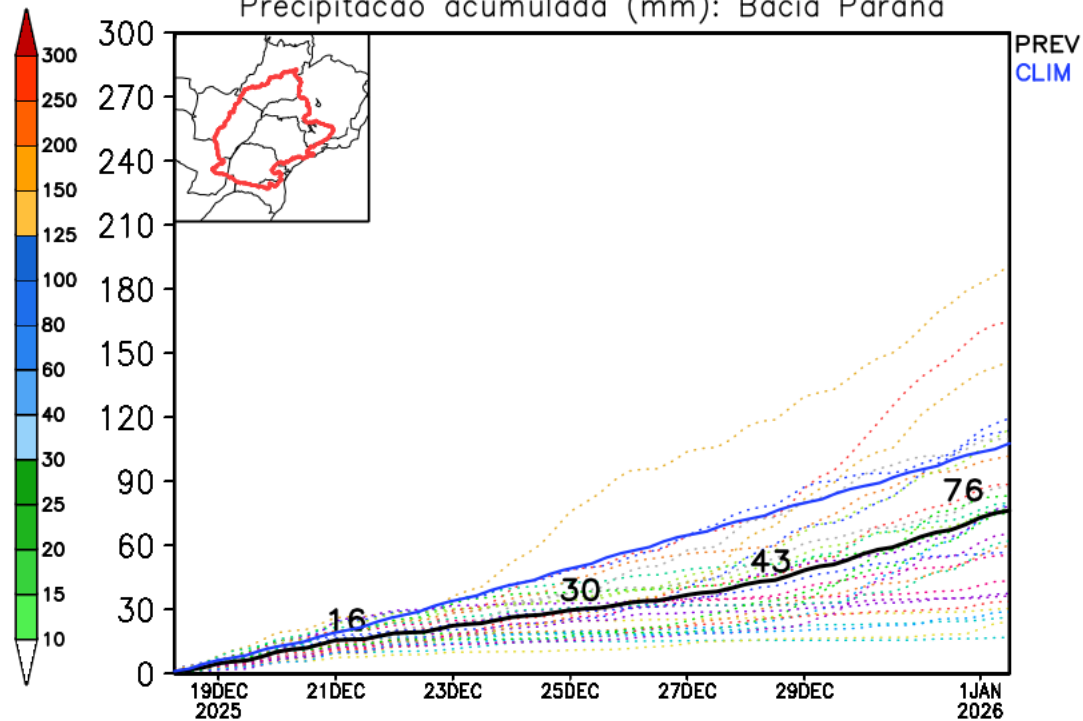


Previsão de chuva para os próximos 14 dias

GEFS / Bacia do Parana
Precipitacao acumulada em 14 dias (mm)
Previsao das 00Z dia 18/12/2025



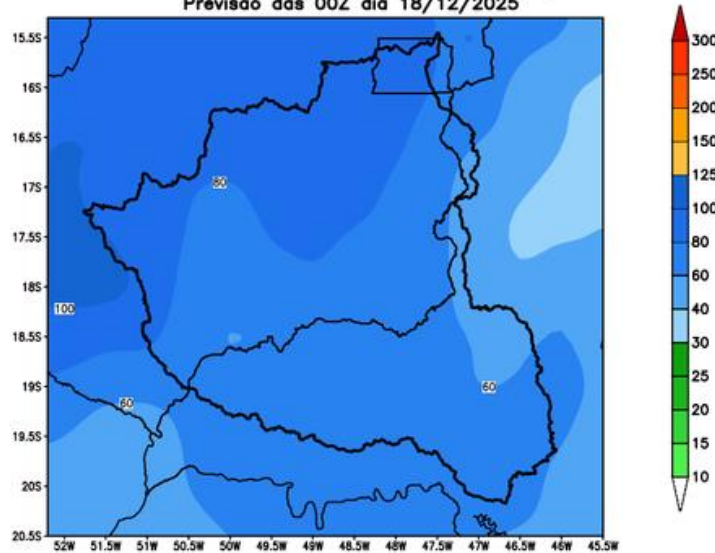
Precipitacao acumulada (mm): Bacia Parana



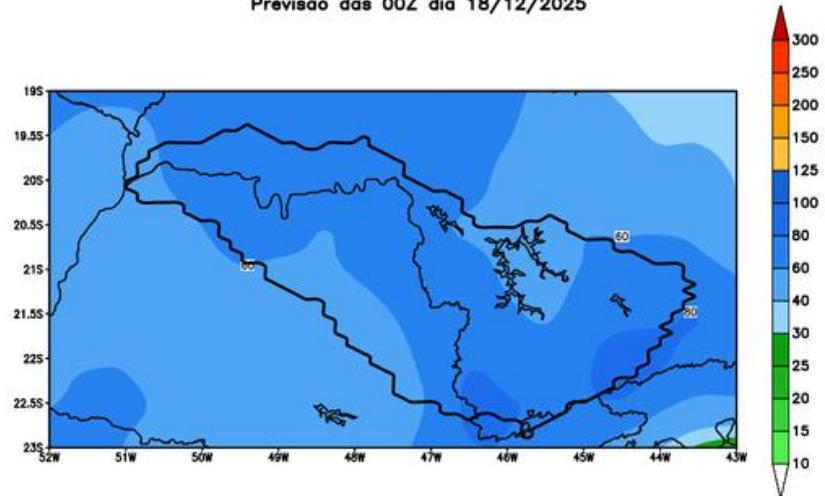
Fonte: GEFS/NOAA

Bacia do rios Paranaíba e Grande

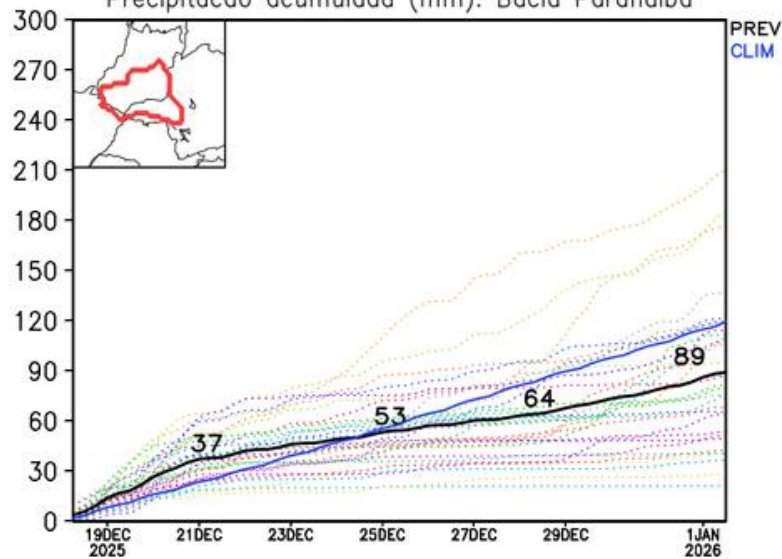
GEFS / Bacia do Rio Paranaíba
Precipitação acumulada em 14 dias (mm)
Previsão das 00Z dia 18/12/2025



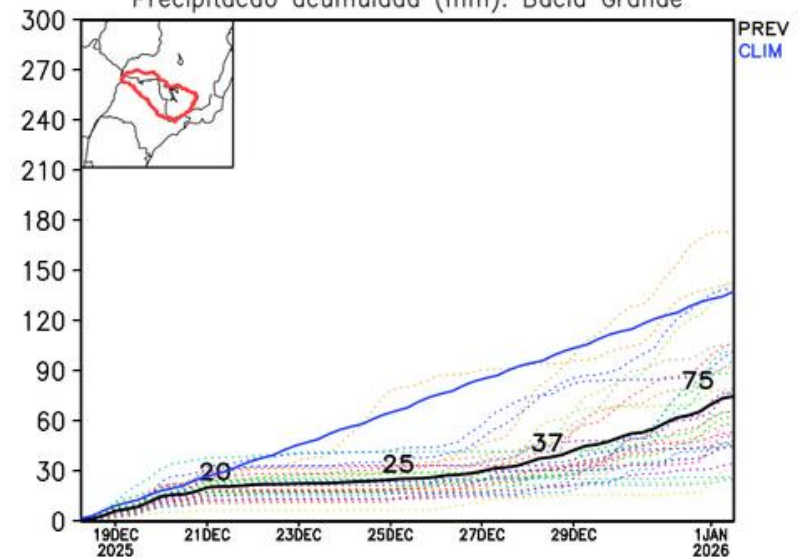
GEFS / Bacia do Rio Grande
Precipitação acumulada em 14 dias (mm)
Previsão das 00Z dia 18/12/2025



Precipitação acumulada (mm): Bacia Paranaíba

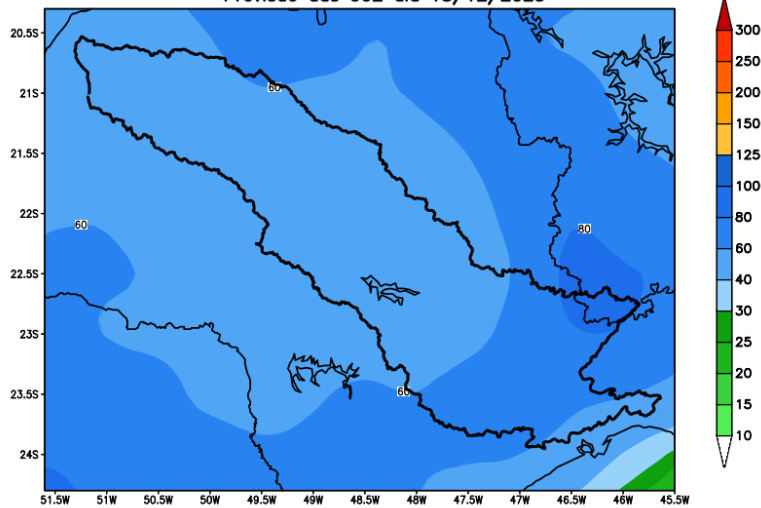


Precipitação acumulada (mm): Bacia Grande

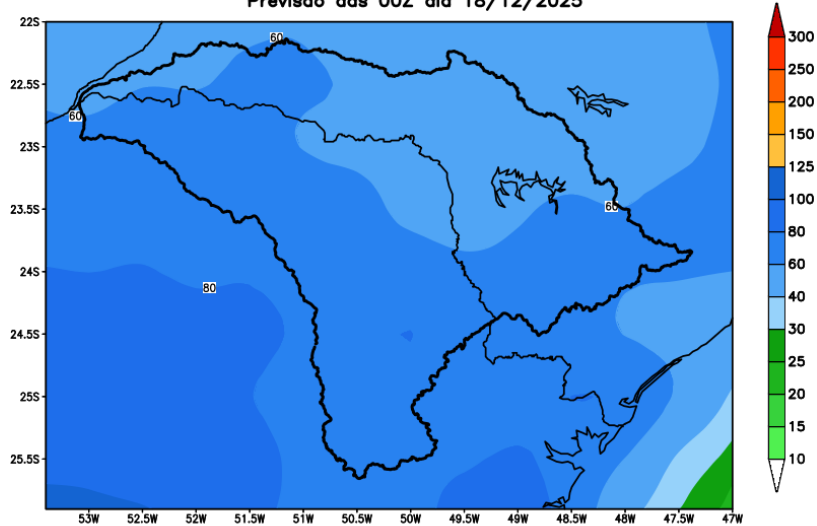


Bacia do rios Tietê e Paranapanema

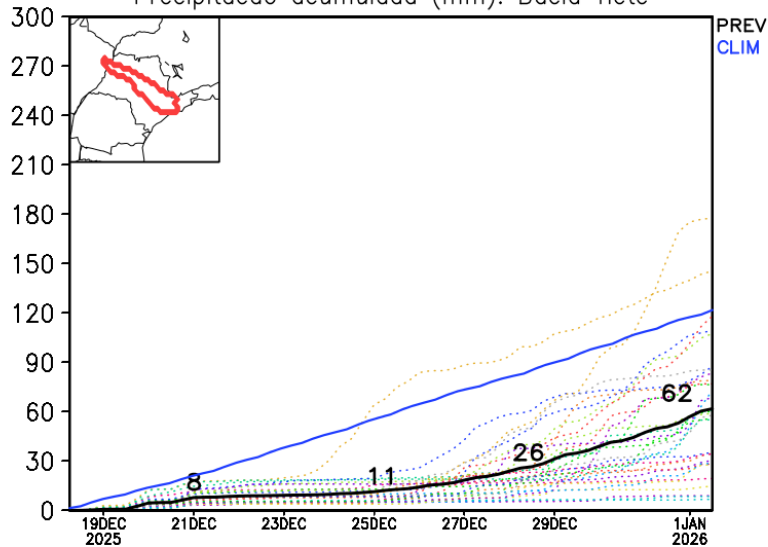
GEFS / Bacia do Rio Tiete
Precipitacao acumulada em 14 dias (mm)
Previsao das 00Z dia 18/12/2025



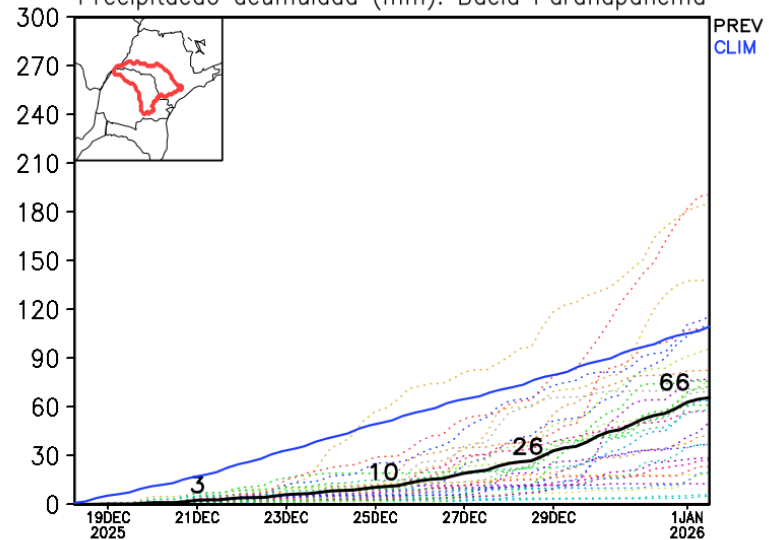
GEFS / Bacia do Rio Paranapanema
Precipitacao acumulada em 14 dias (mm)
Previsao das 00Z dia 18/12/2025



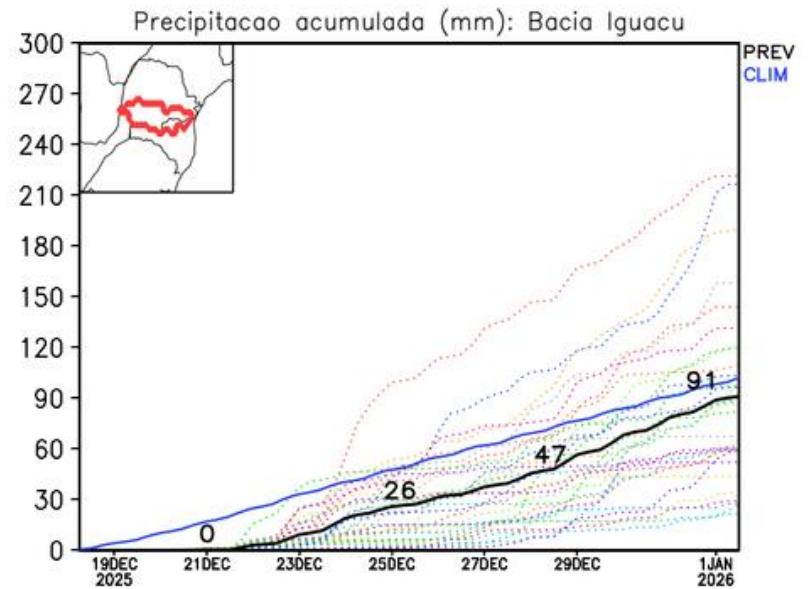
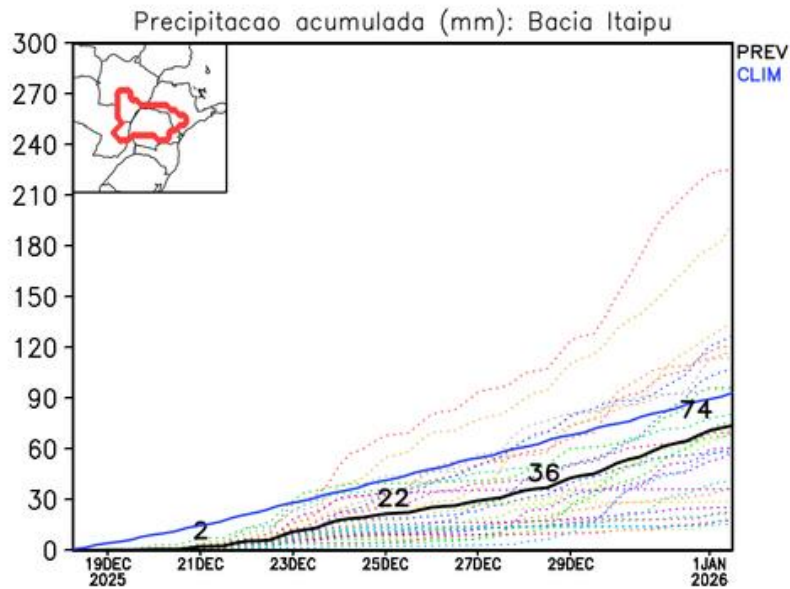
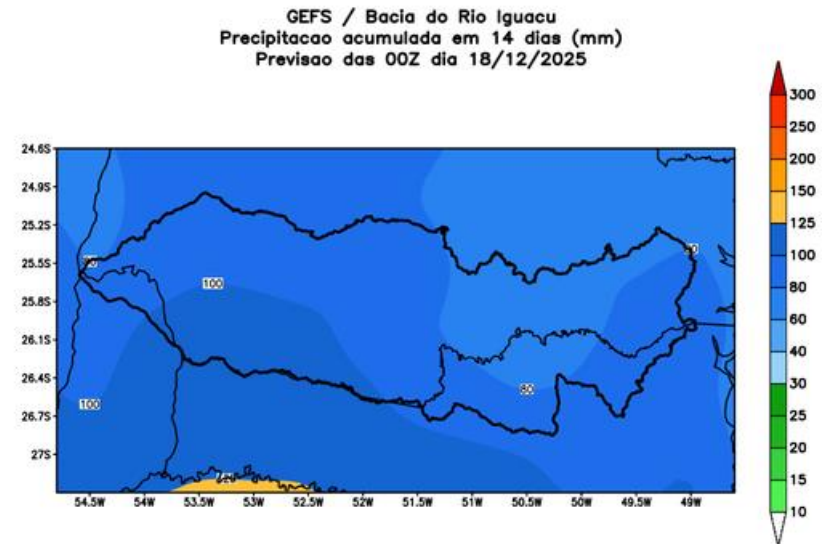
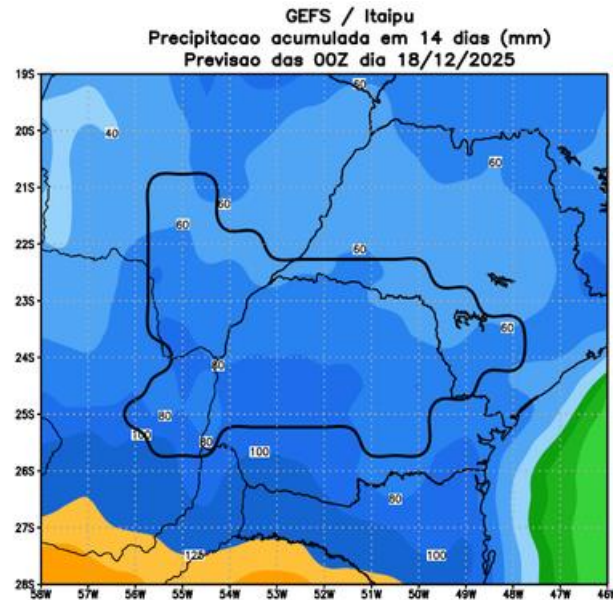
Precipitacao acumulada (mm): Bacia Tiete



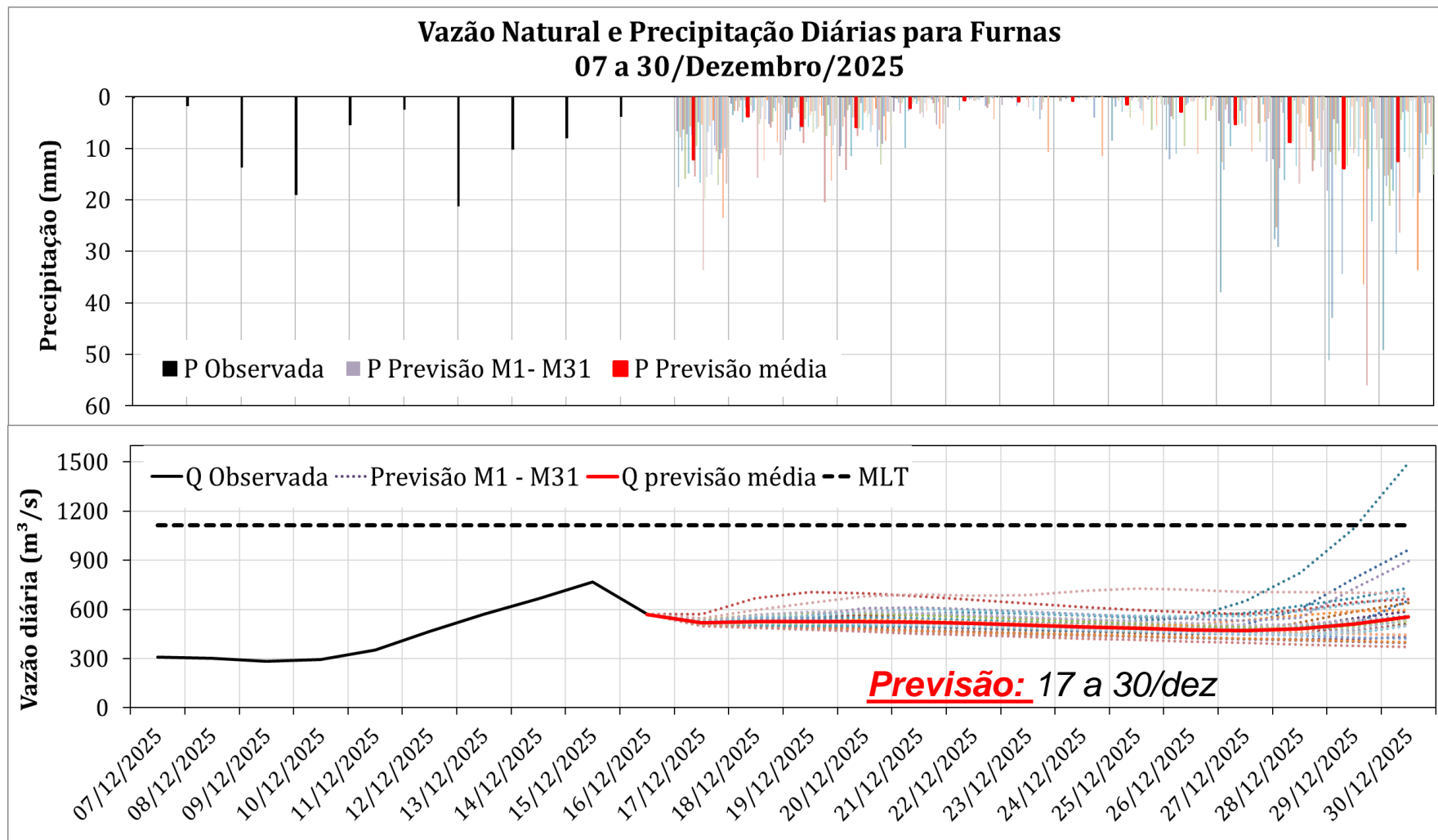
Precipitacao acumulada (mm): Bacia Paranapanema



Bacia do Itaipu e Iguaçu



Furnas: Previsão de Vazão para próximos 14 dias (modelo hidrológico PDM-CEMADEN)



Previsão média para os
próximos 14 dias: **508 m³/s**

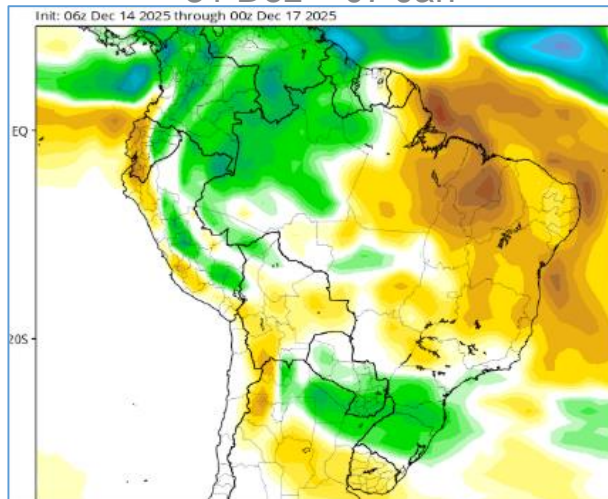


46% MLT Dezembro

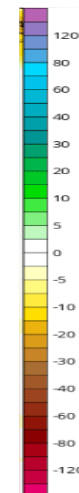
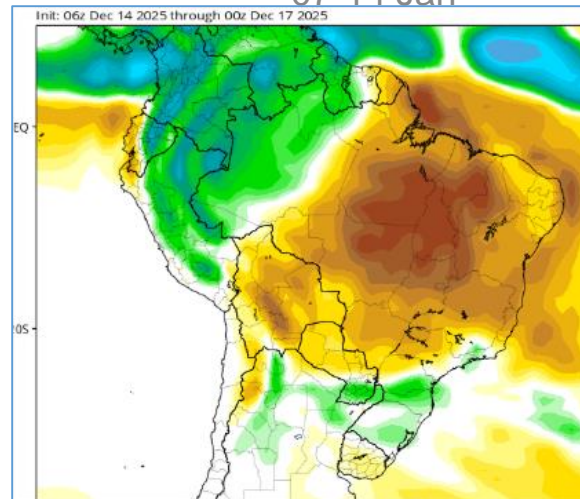
Anomalia de Chuva 3a e 4a semanas

Modelo
Americano
CFS/NOAA

31 Dez – 07 Jan

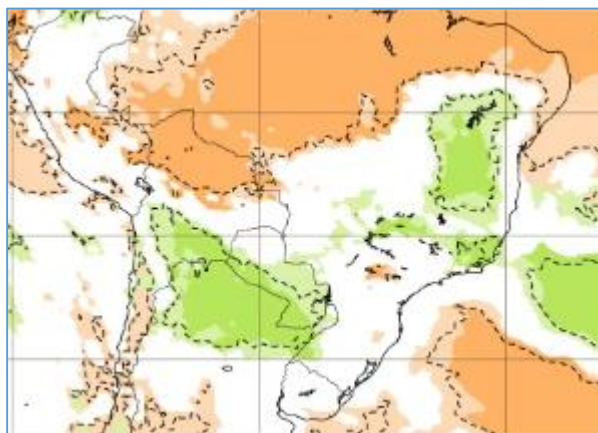


07-14 Jan

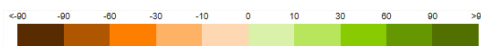
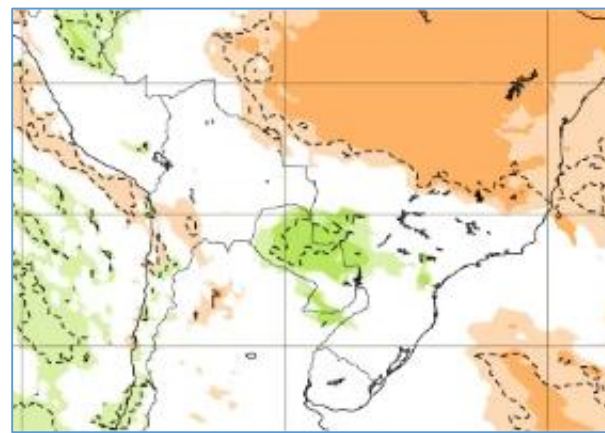


Modelo Europeu
ECMWF

29 Dez – 05 Jan



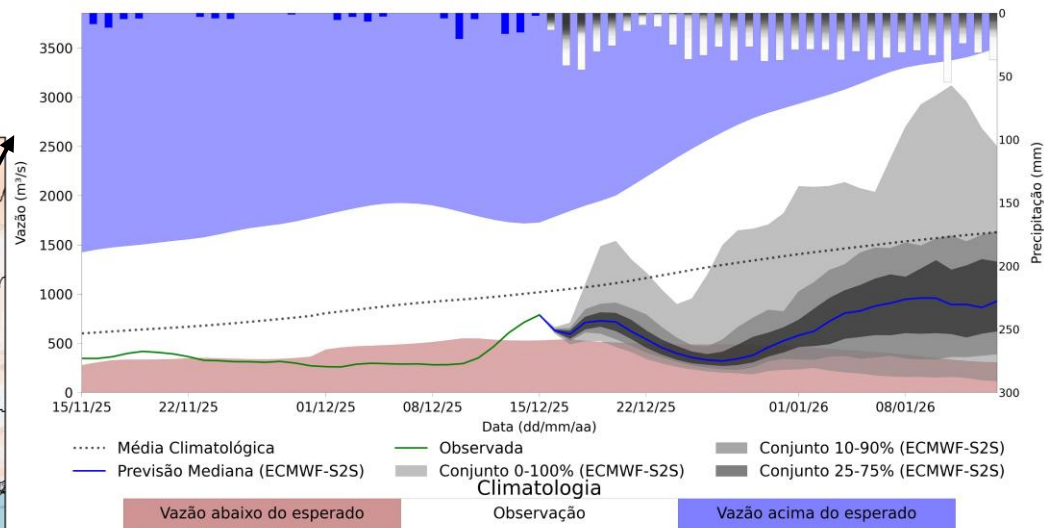
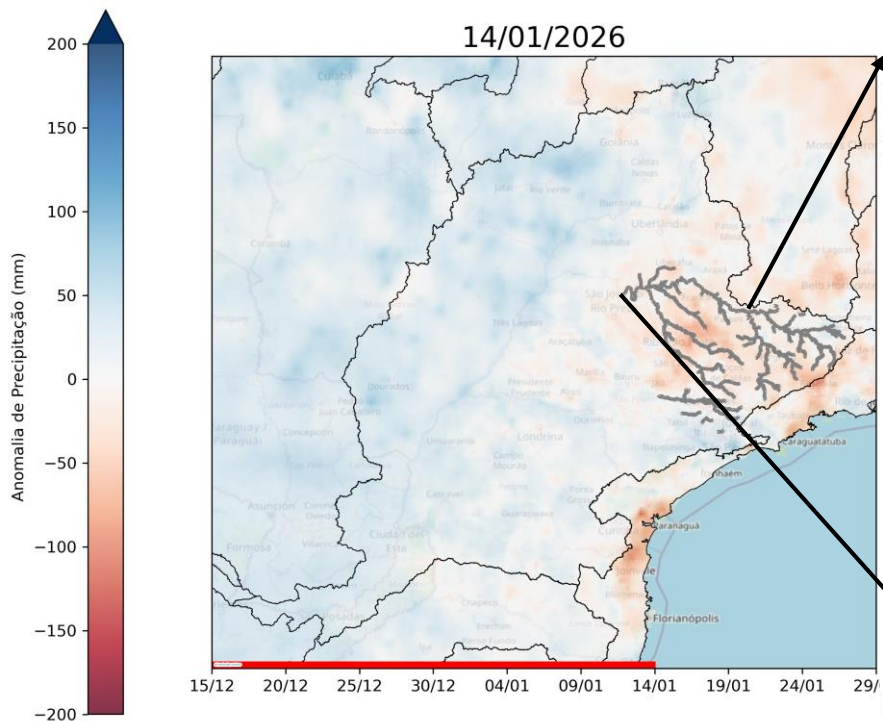
05-12 Jan



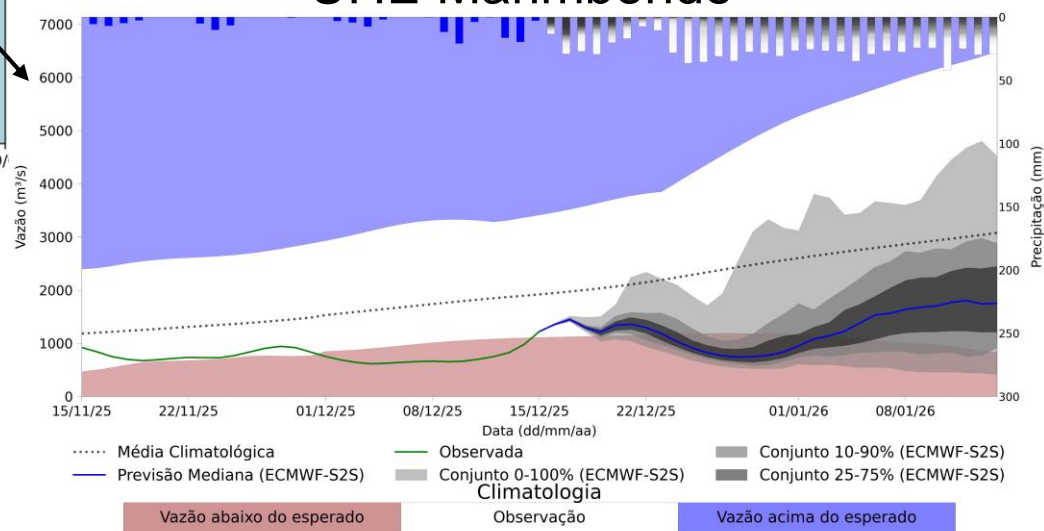
Previsão de vazão natural na Bacia do Rio Grande

UHE Furnas

PREVISÃO: 15/12/25 a 14/01/26



UHE Marimbondo



Fonte: Meteorologia (INMET/MERGE); Vazão (ANA/ONS)

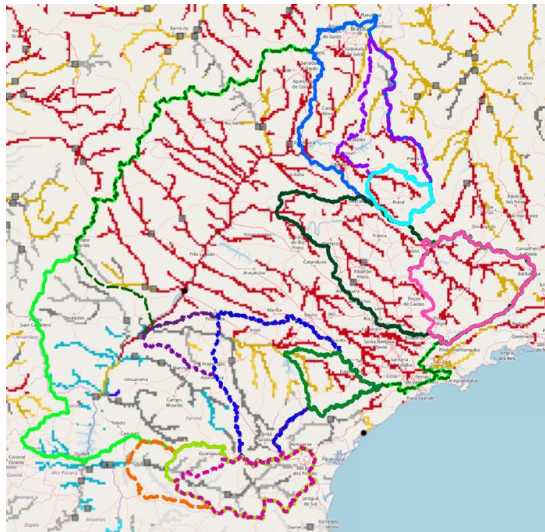
MLT: 1993-2024

Previsão Meteorológica: ECMWF-S2S

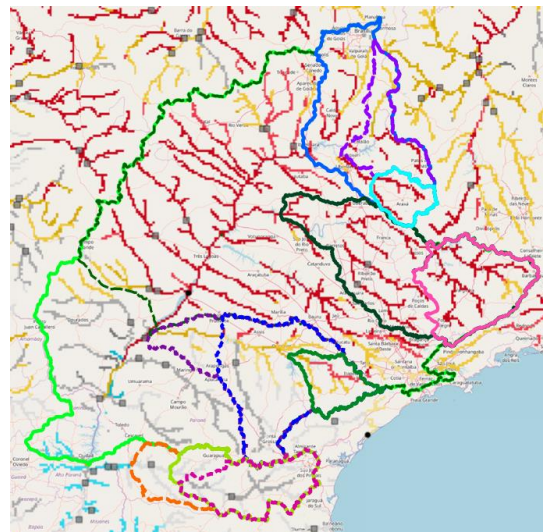
Previsão Sub-sazonal (45 dias) para a Bacia do Rio Paraná (Sistema Global de Previsão de Vazão - GloFAS)

Previsão: 22/12/2025 – 25/01/2026

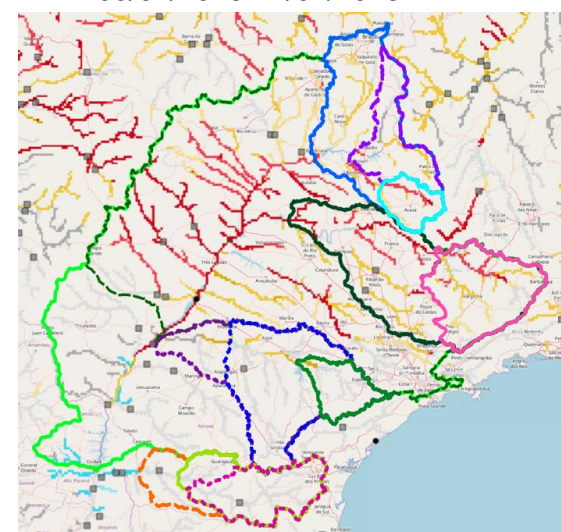
22/12/2025-28/12/2025



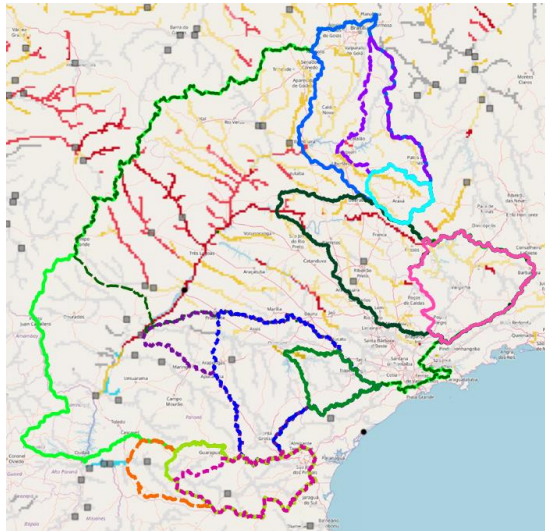
29/12/2025-04/01/2026



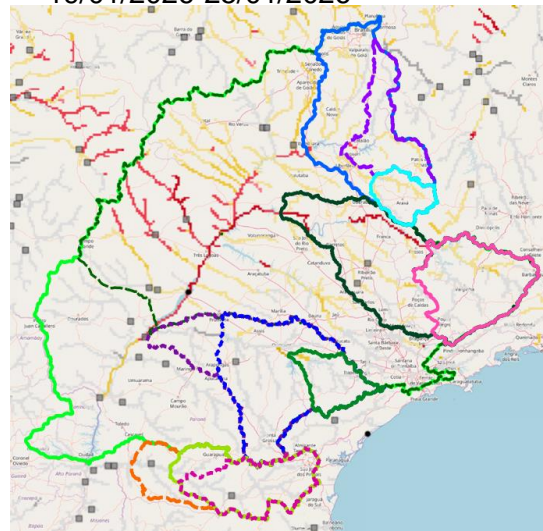
05/01/2026-11/01/2026



12/01/2026-18/01/2026



19/01/2026-25/01/2026



- Bacia UHE Jurumirim
- Bacia UHE Nova Ponte
- Bacia UHE Furnas
- Bacia UHE Segredo
- Bacia UHE Marimbondo
- Bacia UHE Emborcação
- Bacia UHE Salto Santiago
- Bacia UHE Capivara
- Bacia UHE Salto Caxias
- Bacia UHE Rosana
- Bacia UHE Itumbiara
- Bacia UHE Porto Primavera
- Bacia UHE Itaipu

Categoria de anomalia de vazões (percentil)

Categoria de incerteza

	Baixa (0-10)	Média (10-20)	Alta (<20)
Muito abaixo (1-10)			
Abaixo (10-25)			
Média (25-75)			
Acima (75-90)			
Muito acima (90-100)			

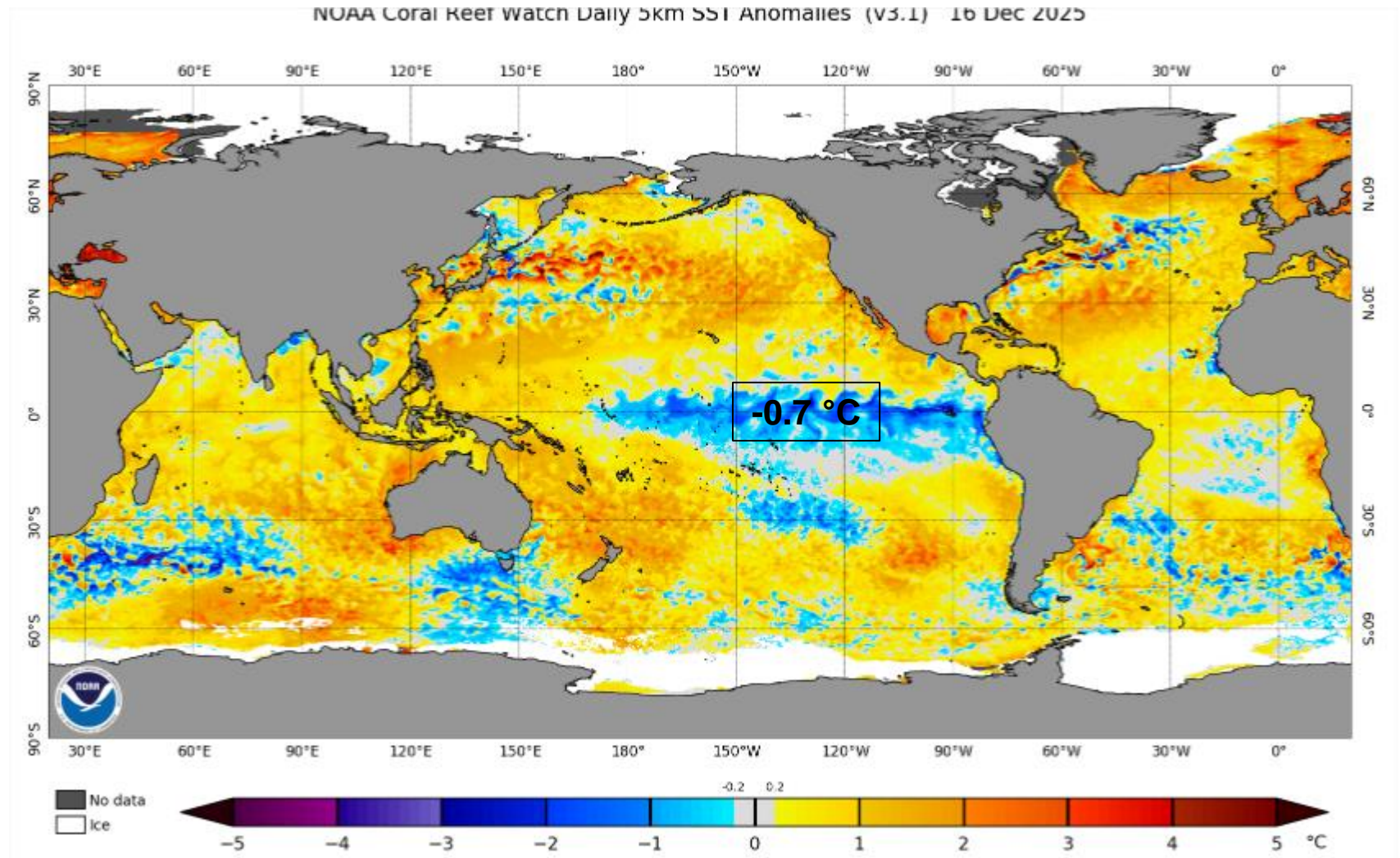
Fonte: Previsão Meteorológica: ECMWF

Previsão de vazão: Lisflood/GloFAS Forecast

<https://www.globalfloods.eu/glofas-forecasting/>

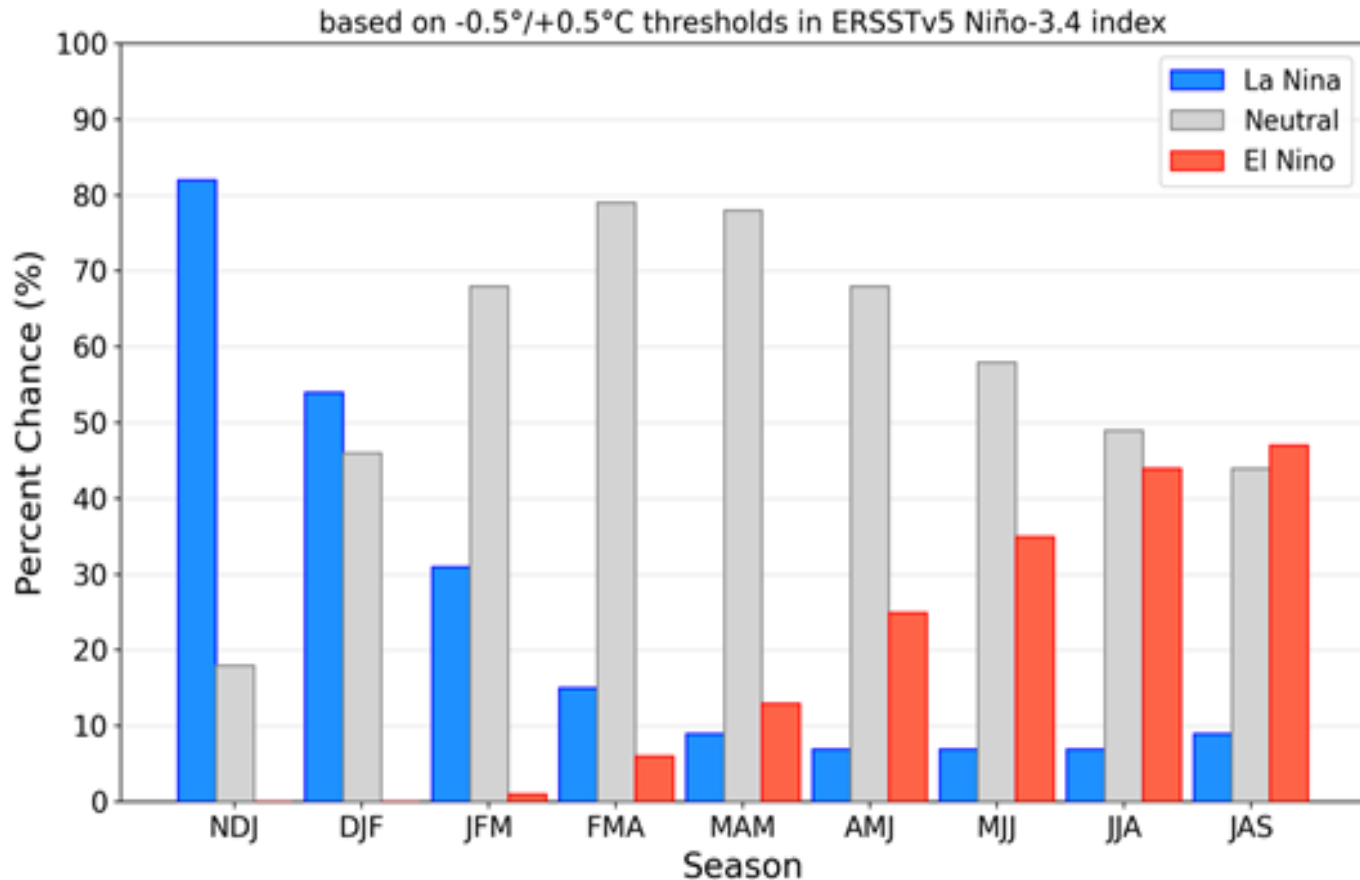


Situação Oceânica Status La Niña



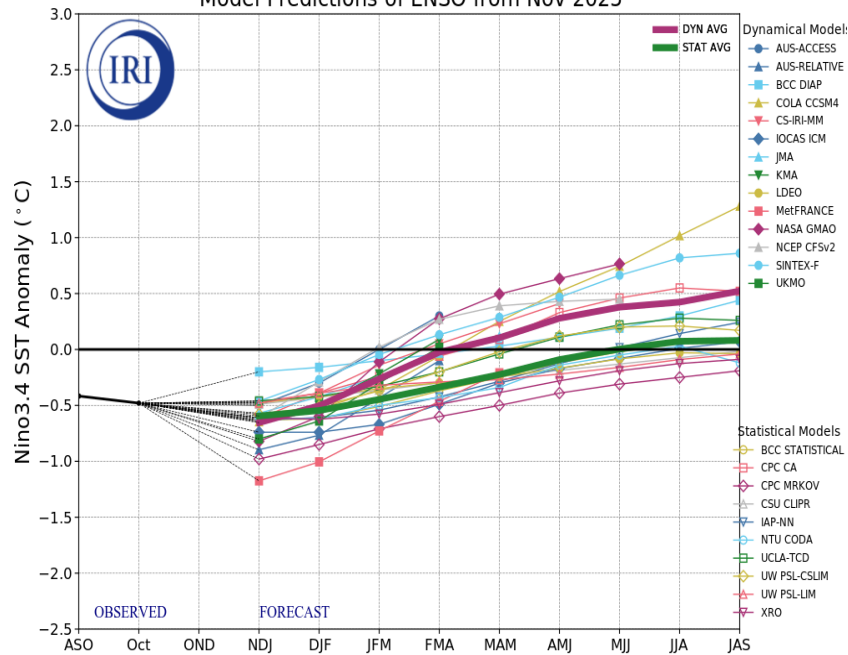
Previsão do “ENSO”

Official NOAA CPC ENSO Probabilities (issued December 2025)

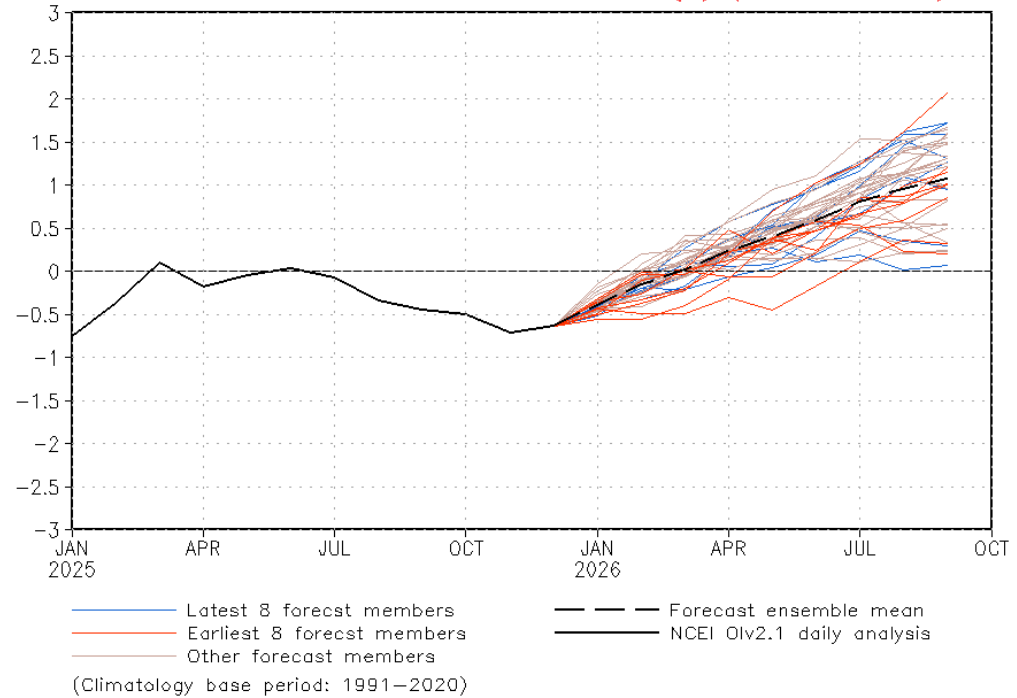


Previsão do “ENSO”

Model Predictions of ENSO from Nov 2025



CFSv2 forecast Nino3.4 SST anomalies (K) (PDF corrected)

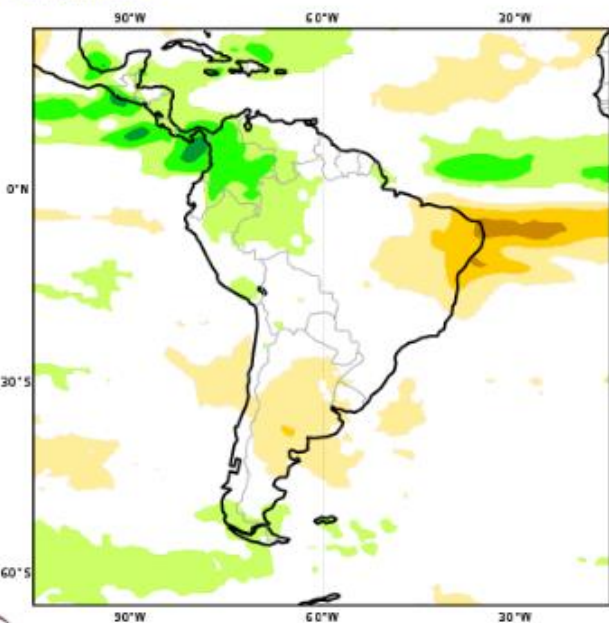


Previsão Sazonal de Chuva Multi-Modelo

Dezembro-Janeiro-Fevereiro

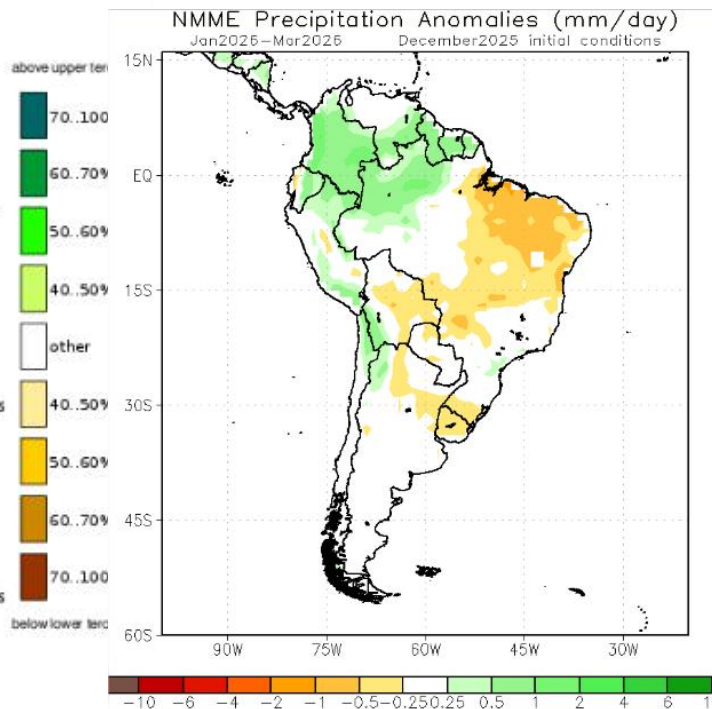
Prob(most likely category of precipitation)

Nominal forecast start: 01/12/25
Unweighted mean

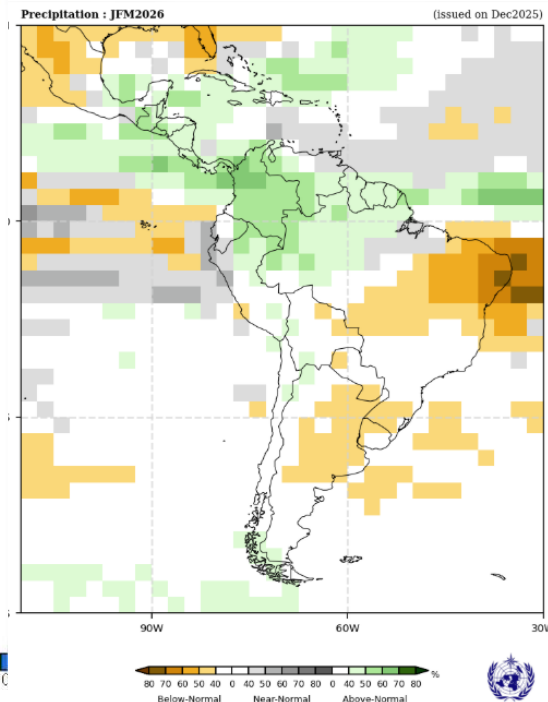


Modelos “Europeus”

JFM 2026

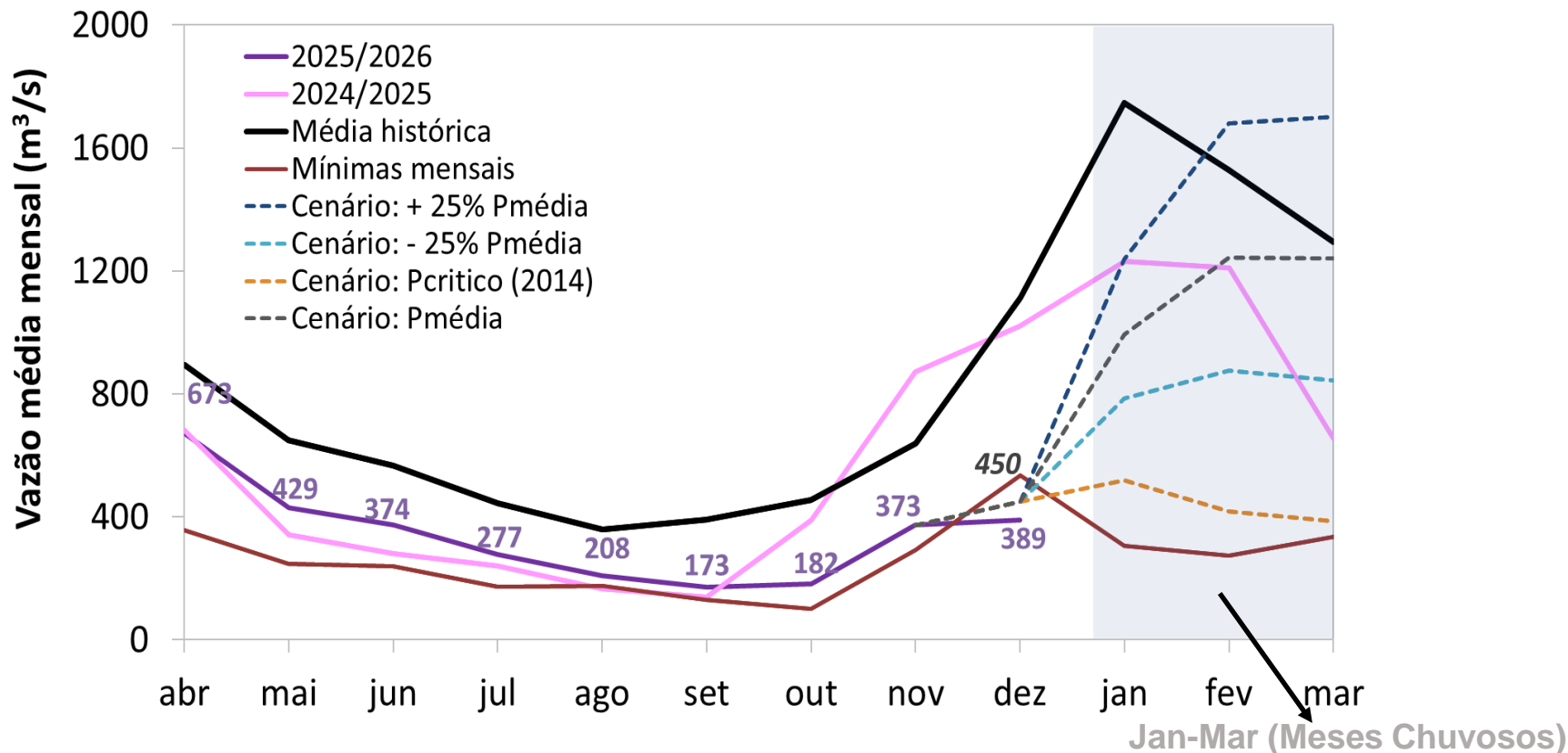


Modelos Norte Americanos



Modelos da WMO

Furnas: Projeção de Vazão (modelo hidrológico PDM-CEMADEN)



Vazão	% MLT
1540 m³/s	101%
1159 m³/s	76%
834 m³/s	55%
441 m³/s	29%

2014
(37% MLT)