



CEMADEN

**Centro Nacional de Monitoramento e
Alertas de Desastres Naturais**

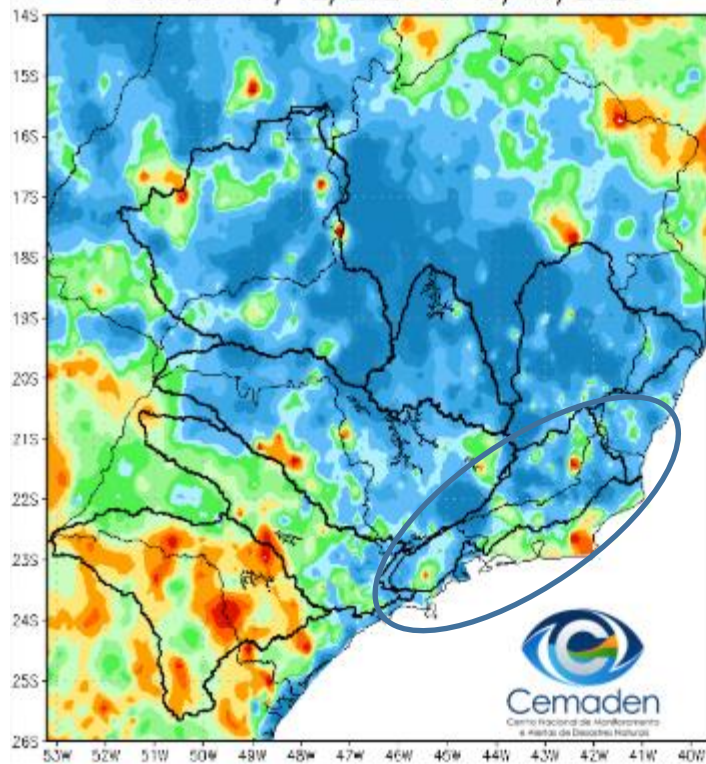
Monitoramento e Previsões de Chuva para a Bacia do Rio Paraíba do Sul

15 de Janeiro de 2025

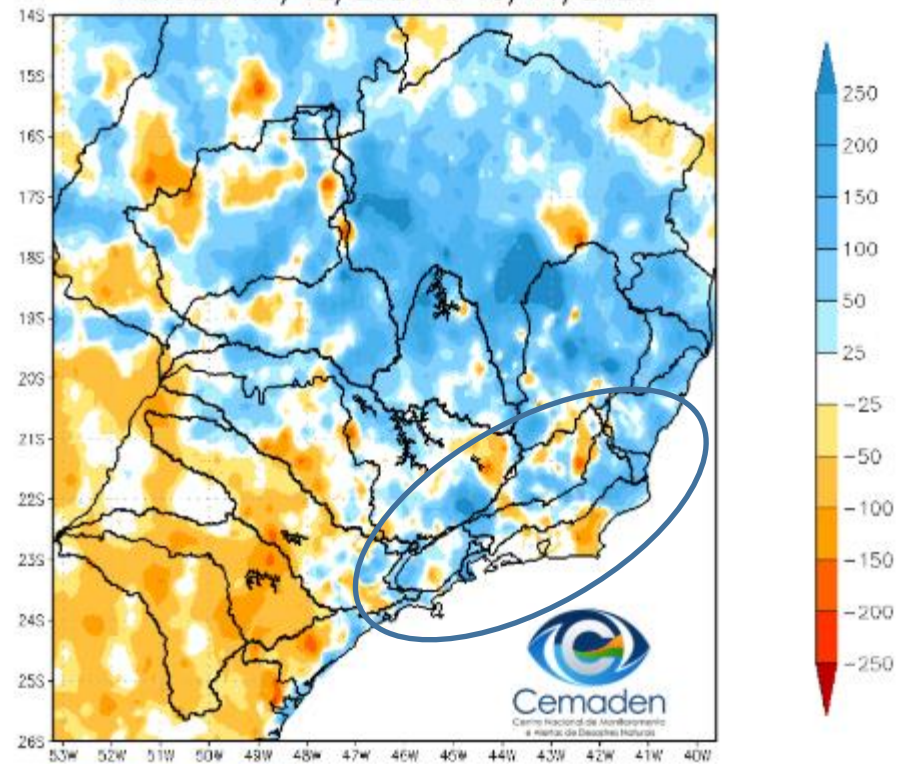


Precipitação acumulada nos últimos 30 dias

Precipitação Acumulada (mm) A.S.
Período: 14/12/2024 a 13/01/2025

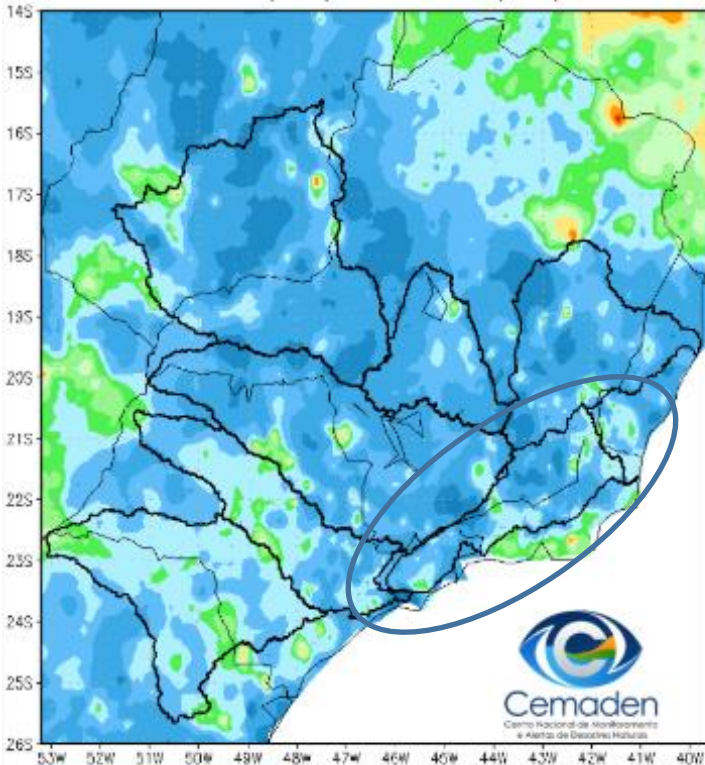


Anomalia de Precipitação (mm) A.S.
Período: 14/12/2024 a 13/01/2025

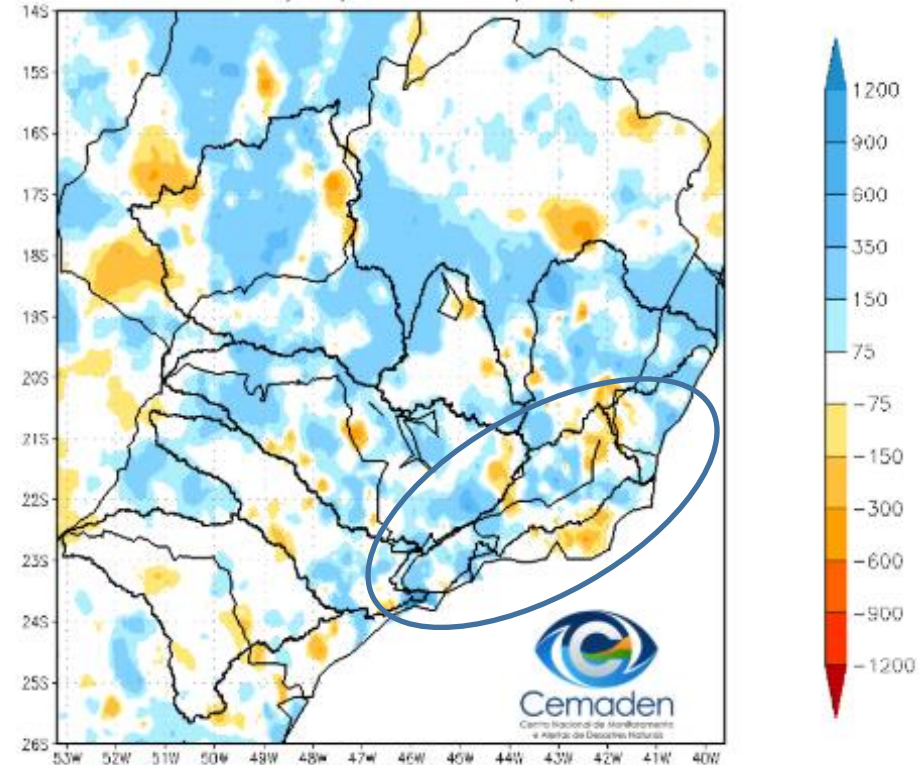


Precipitação acumulada no ano hidrológico

Precipitação Acumulada (mm) A.S.
Período: 01/10/2024 a 14/01/2025

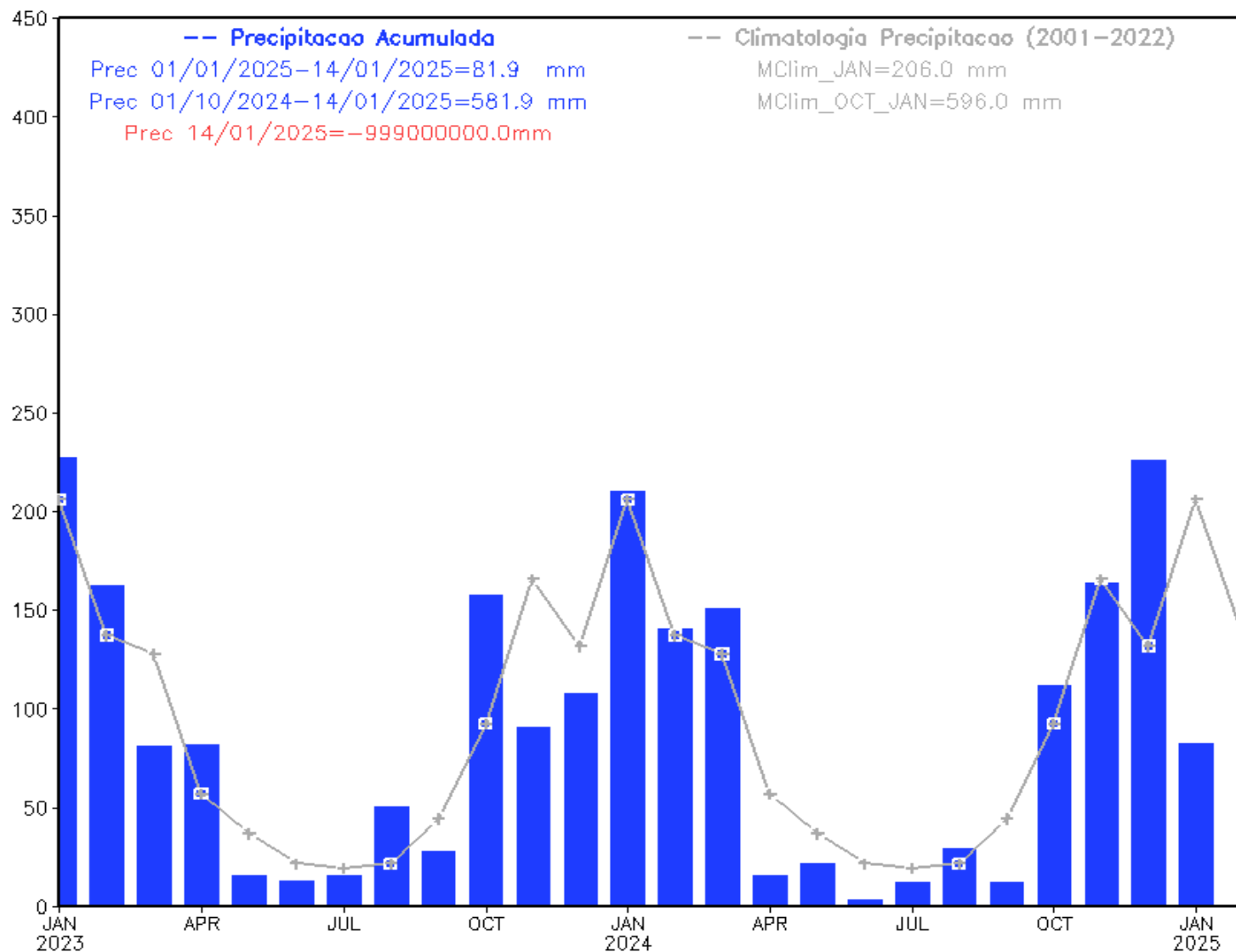


Anomalia de Precipitação (mm) A.S.
Período: 01/10/2024 a 14/01/2025

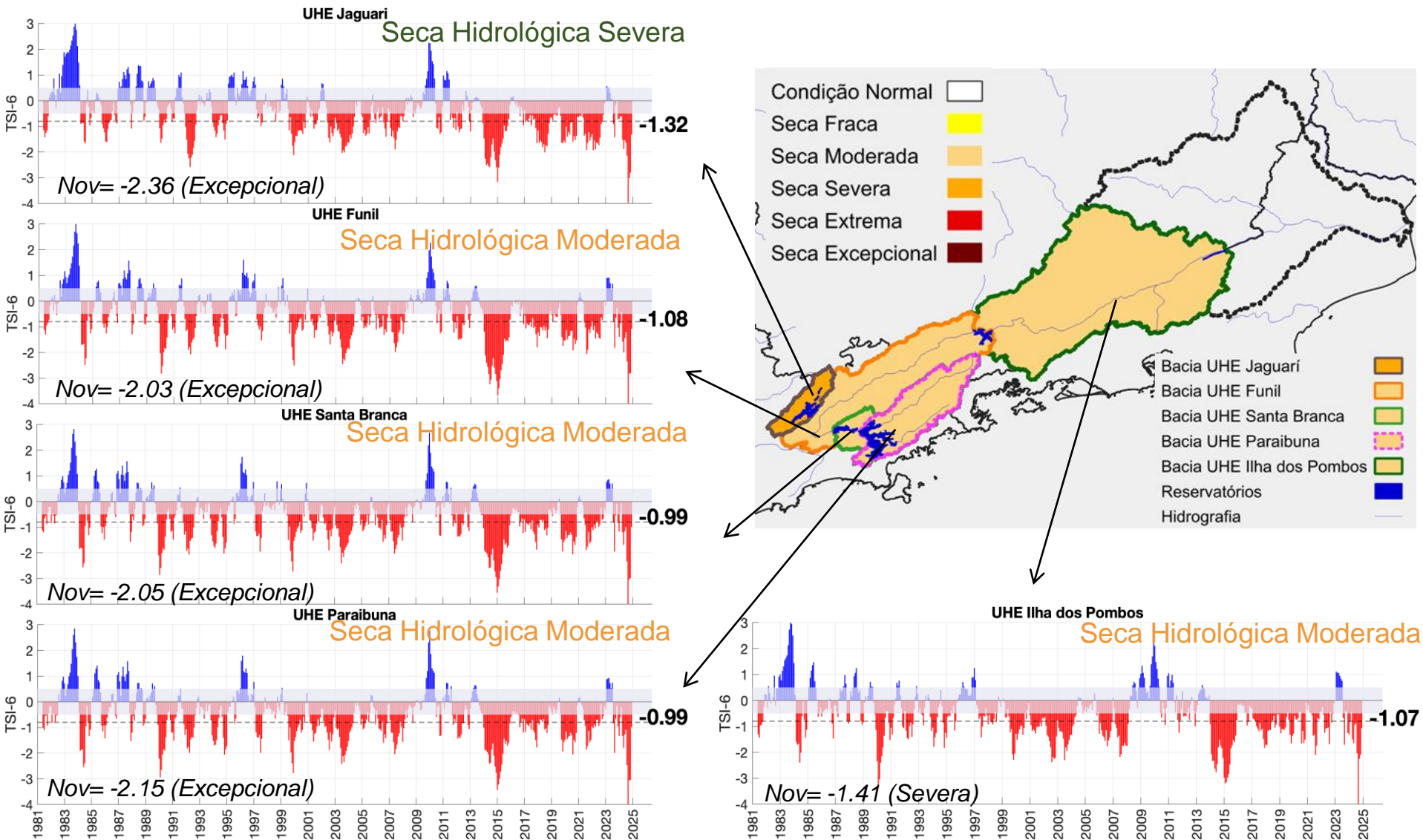


Precipitação nos últimos 2 anos

Precipitacao Bacia do Rio Paraiba_Sul
desde JAN 2023

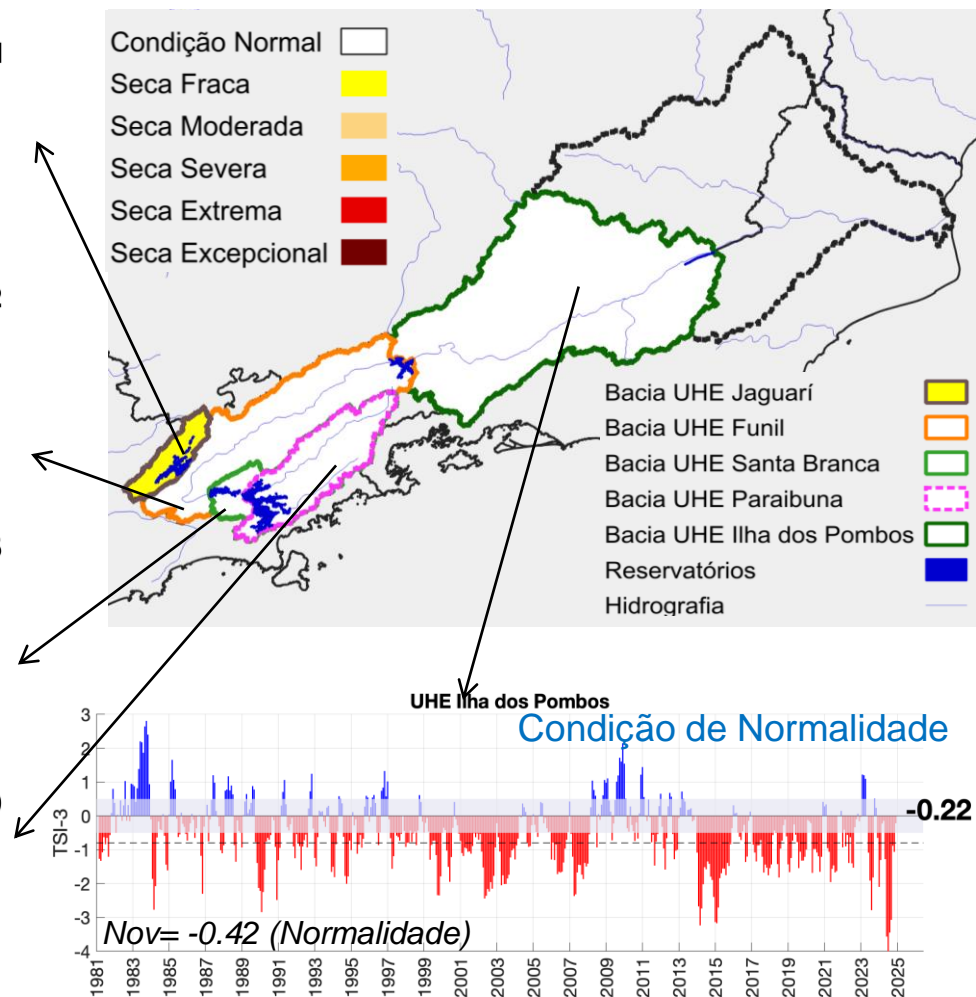
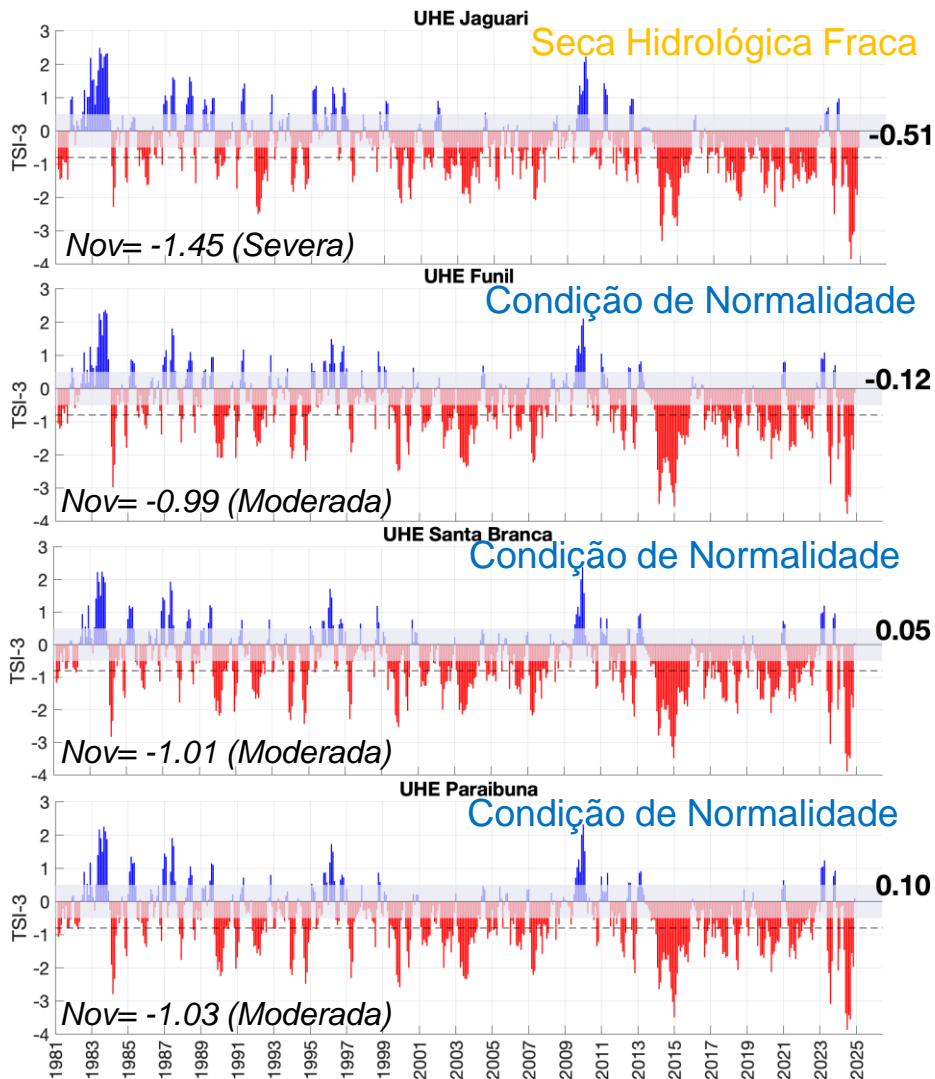


Índice Padronizado Bivariado (Chuva-Vazão) – TS6

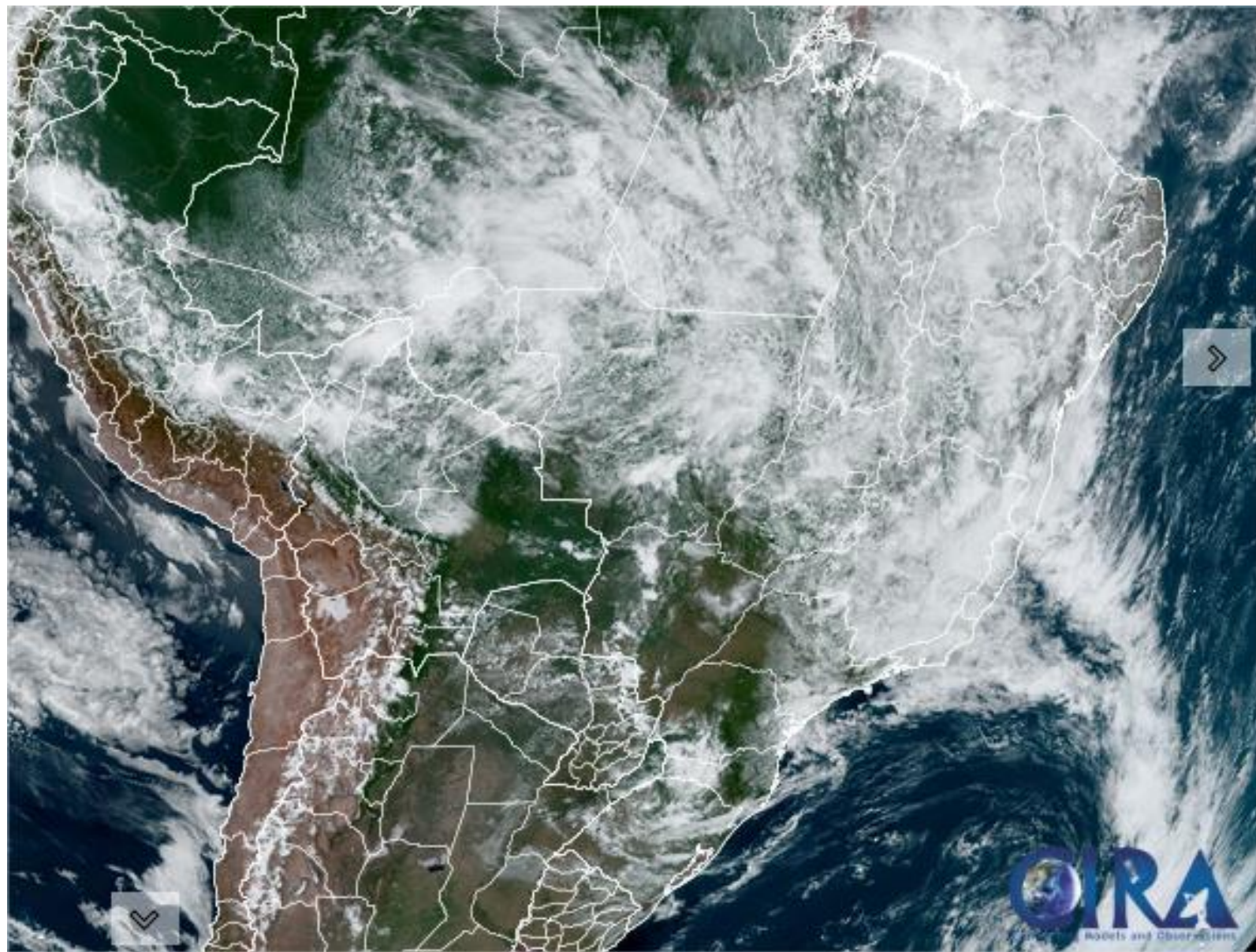


Fonte dos dados: Precipitação (Cemaden/INMET) e Vazão (ONS/ANA) - Jan/1981-Dez/2024. Estimativa TSI e Gráficos: CEMADEN

Índice Padronizado Bivariado (Chuva-Vazão) – TSI3

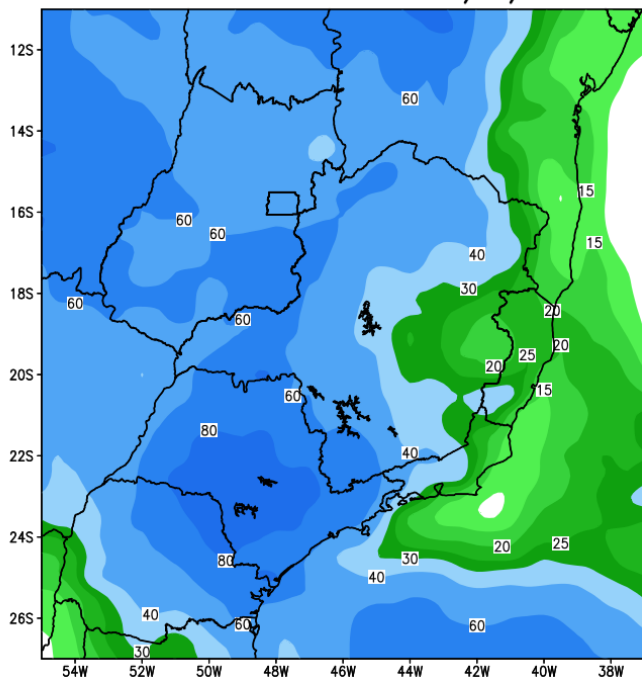


Situação meteorológica atual

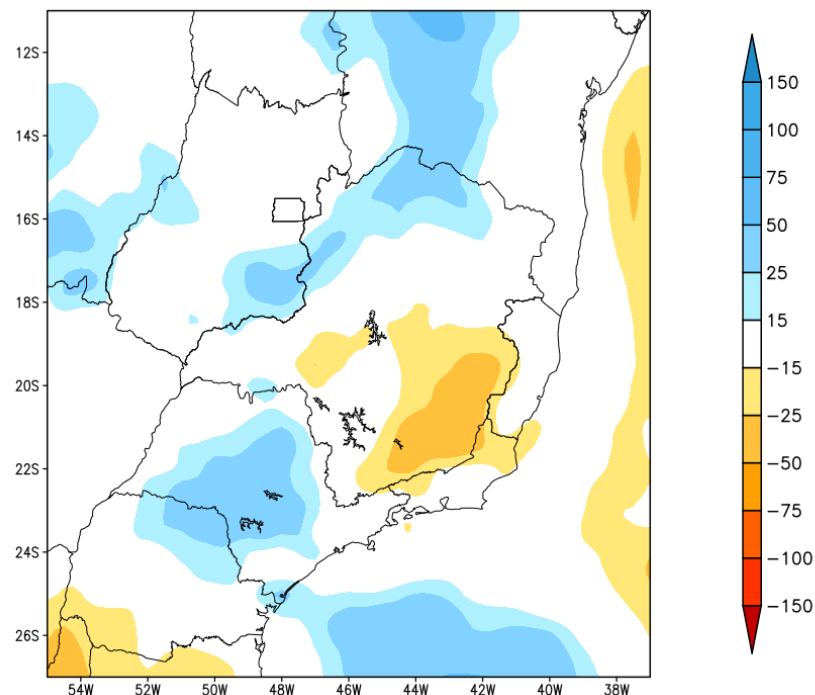


Previsão de chuva para os próximos 7 dias

GEFS / BRASIL_SE
Precipitacao acumulada 1aSem (mm)
Previsao das 00Z dia 15/01/2025

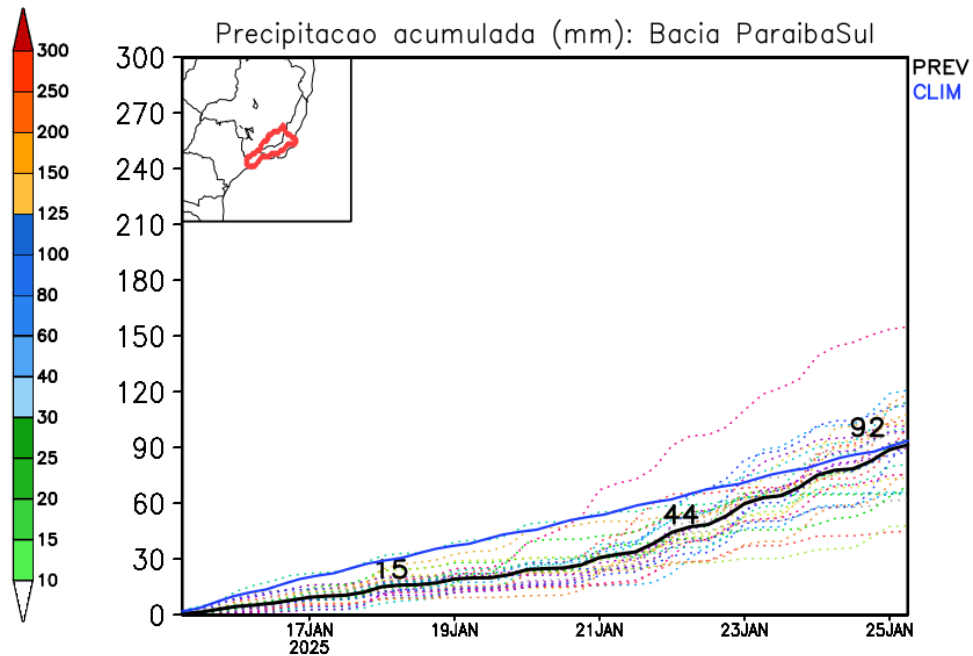
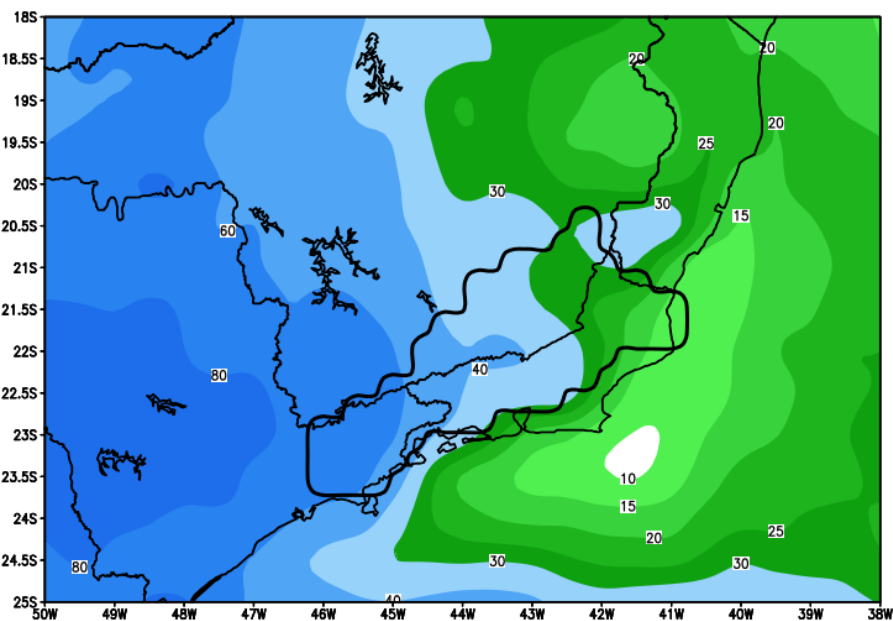


Anomalia de Precipitacao BR SE (mm)
Periodo: 2025011500 a 2025012200



Rio Paraíba do Sul

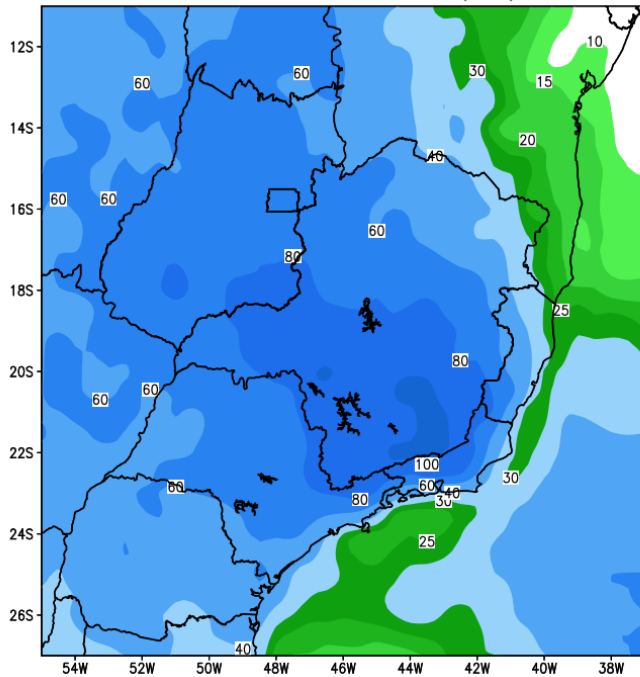
GEFS / Bacia do Rio Paraíba do Sul
Precipitacao acumulada em 7 dias (mm)
Previsao das 00Z dia 15/01/2025



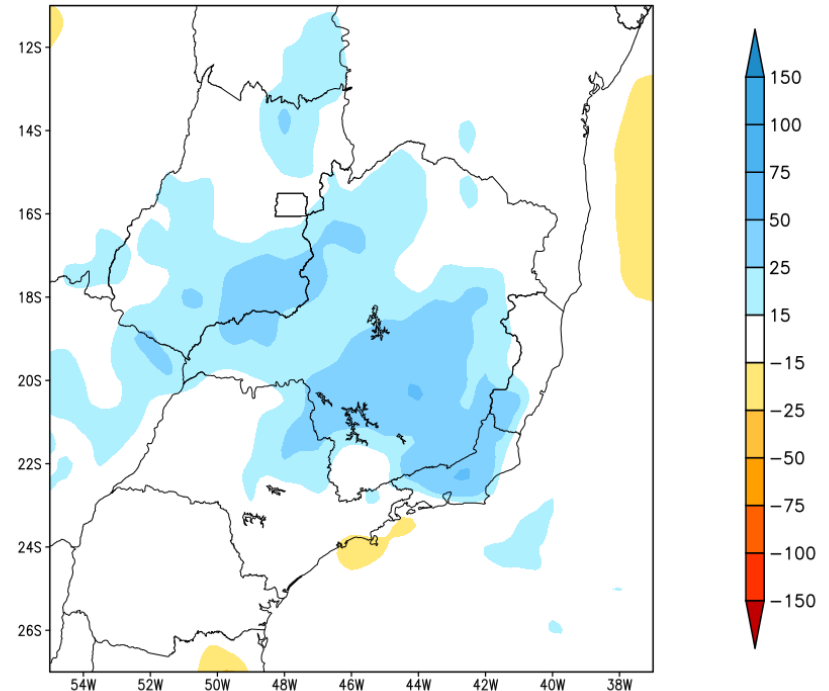
Modelo GEFS/NOAA

Tendência para a 2a semana

GEFS / BRASIL_SE
Precipitacao acumulada 2aSem (mm)
Previsao das 00Z dia 15/01/2025

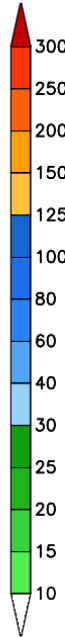
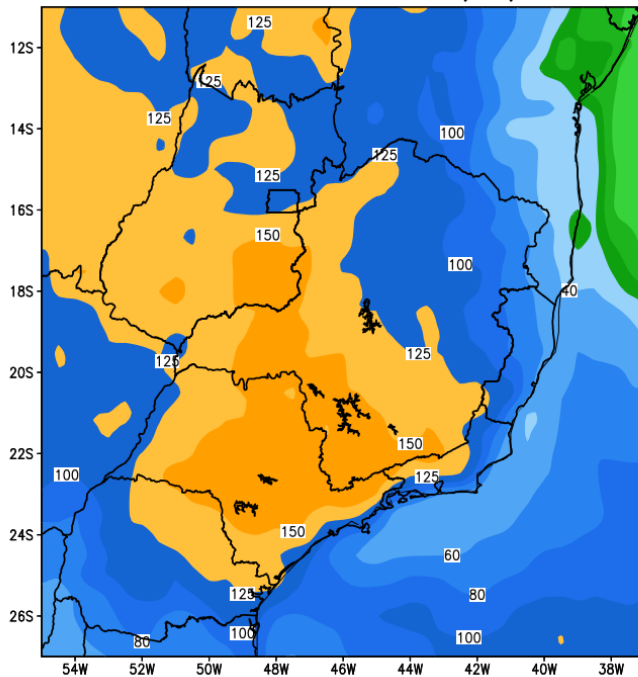


Anomalia de Precipitacao BR_SE (mm)
Periodo: 2025012300 a 2025012900

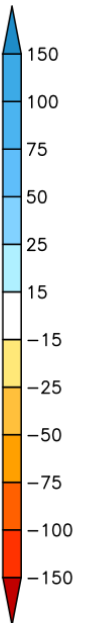
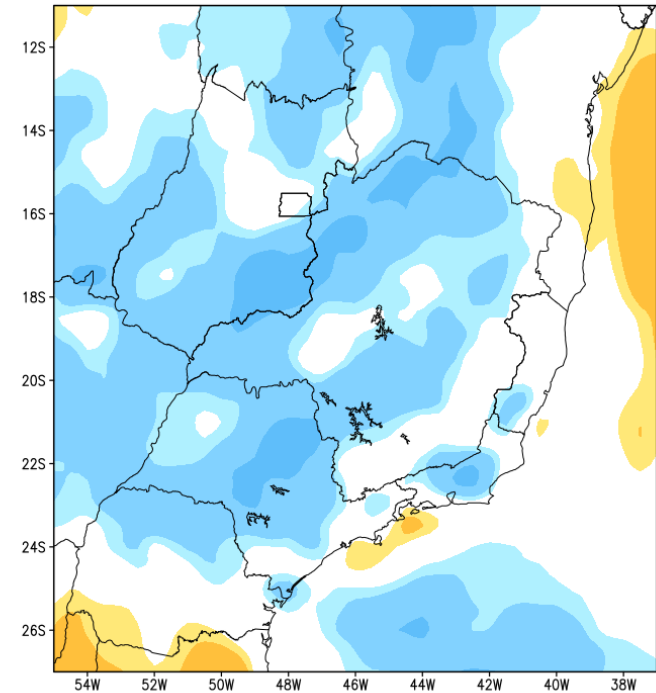


Tendência para as próximas duas semanas

GEFS / BRASIL_SE
Precipitação acumulada 14 dias (mm)
Previsão das 00Z dia 15/01/2025



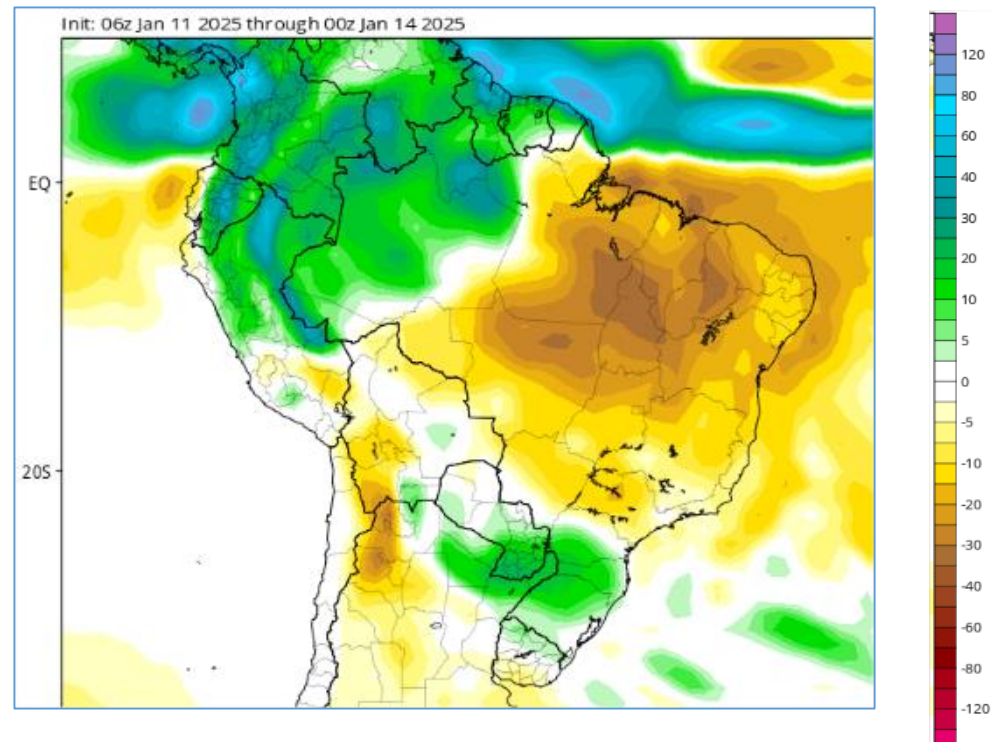
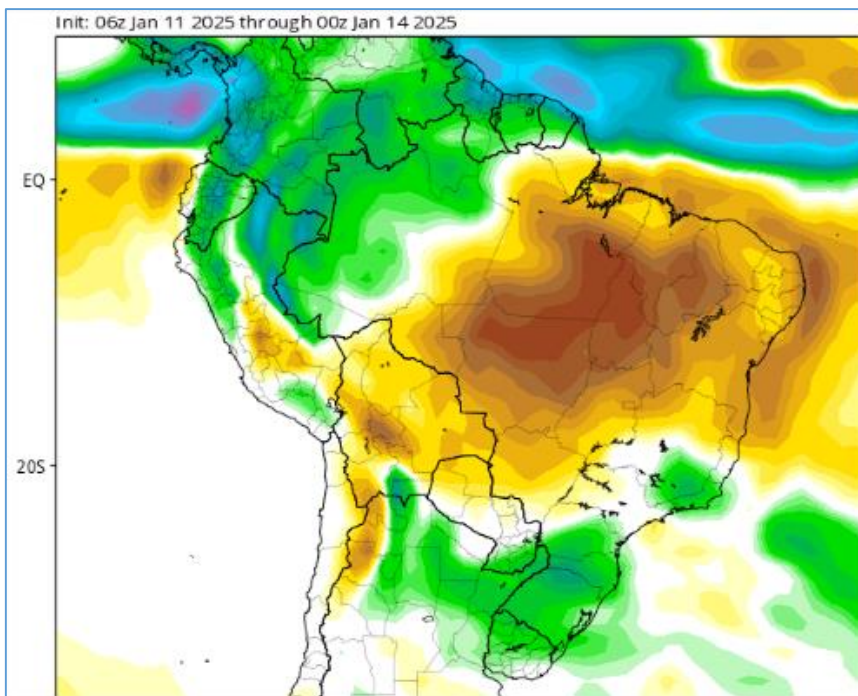
Anomalia de Precipitação BR SE (mm)
Período: 2025011500 a 2025012900



Tendência 3a e 4a semanas

28 Jan -04 Fev

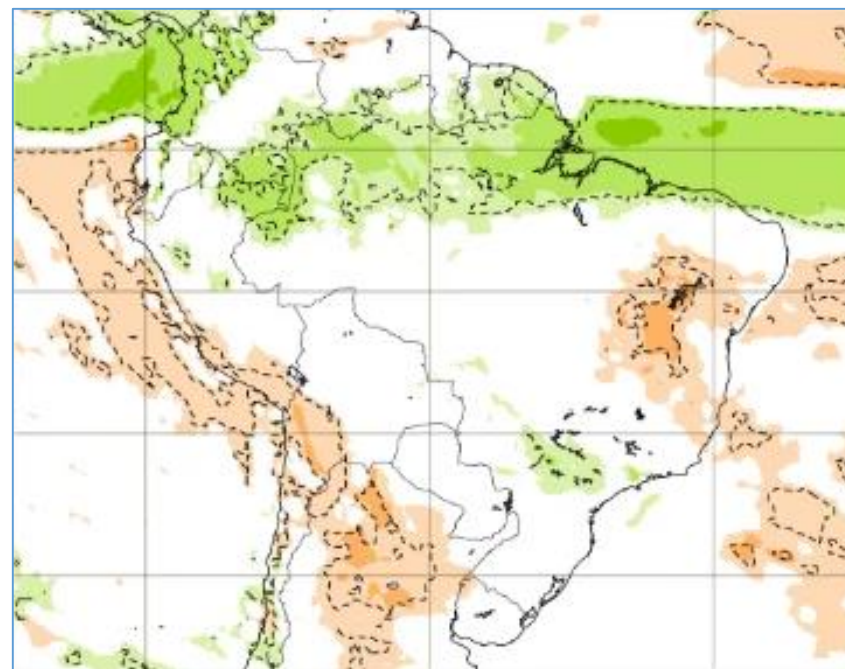
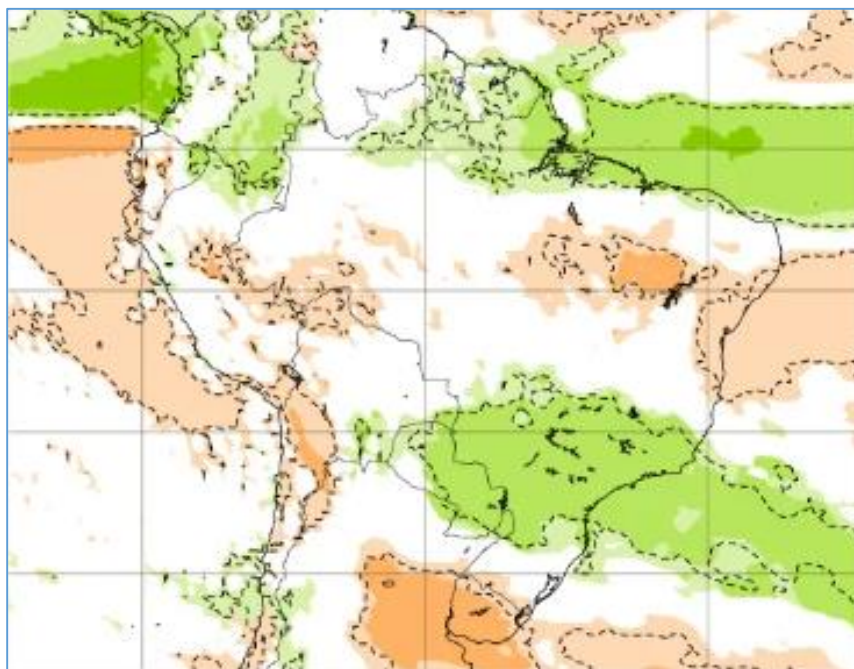
04-11 Fev



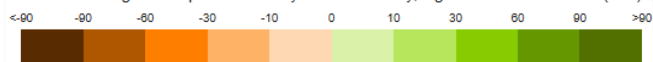
Tendência para 3ª e 4ª semanas

27 Jan -03 Fev

03-10 Fev

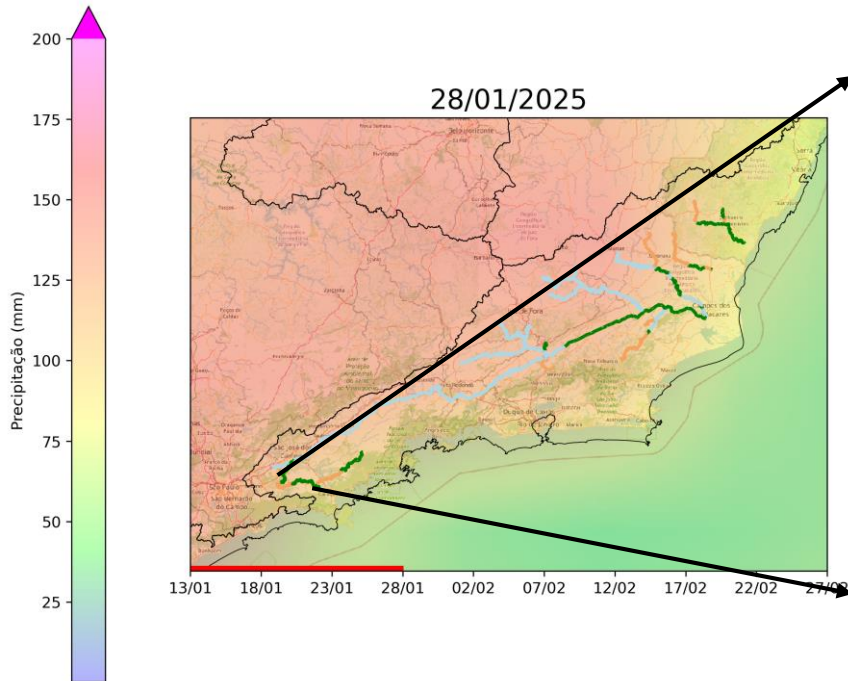


Extended range: Precipitation weekly mean anomaly, significance level: 10 % (mm)

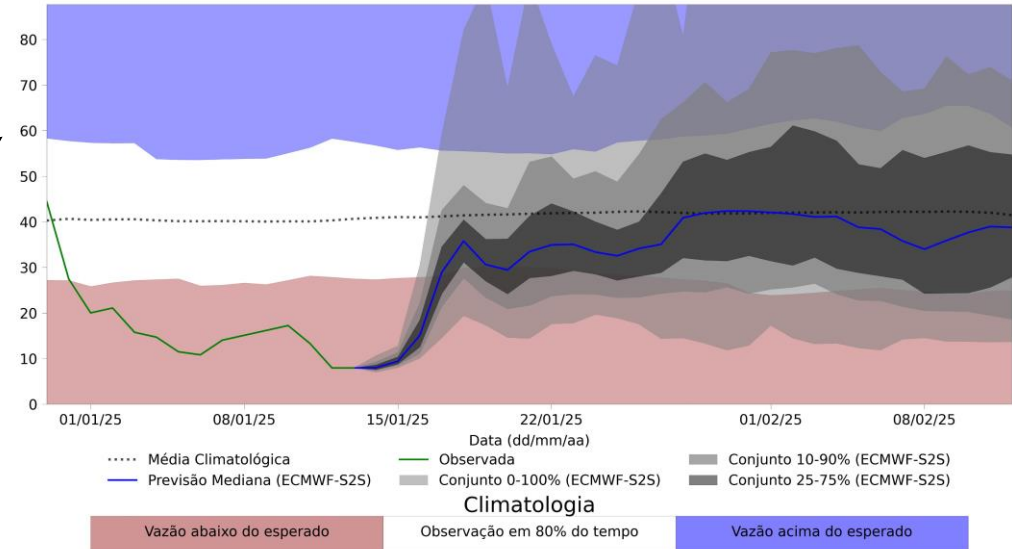


Previsão de vazão natural na Bacia Rio Paraíba do Sul 30 dias (Modelo hidrológico MHD)

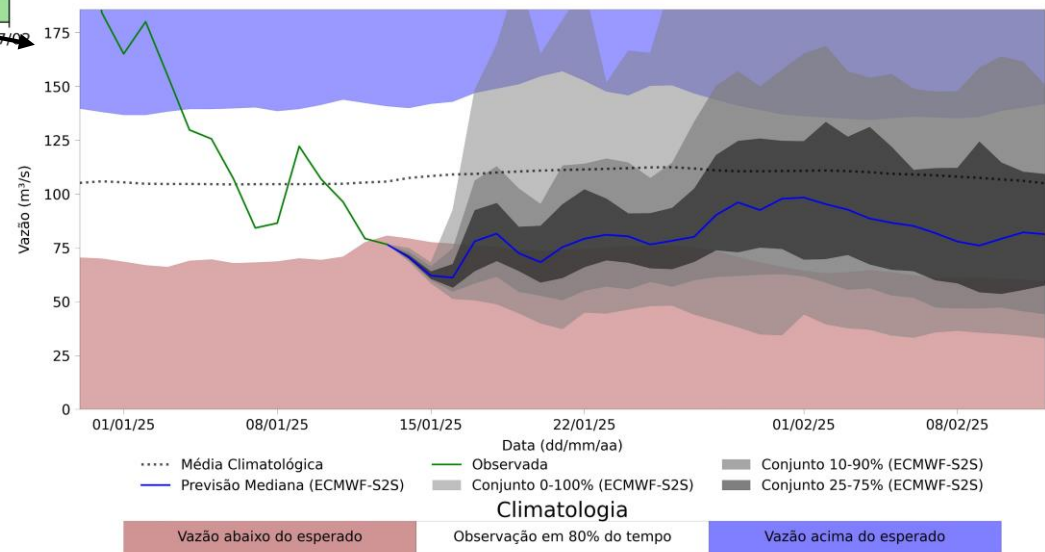
Previsão: 13/01 a 12/02/2025



UHE Jaguari



UHE Paraibuna



- Abaixo Percentil 10%
- Abaixo da média climatológica
- Próximo da média climatológica
- Acima da média climatológica
- Acima Percentil 90%

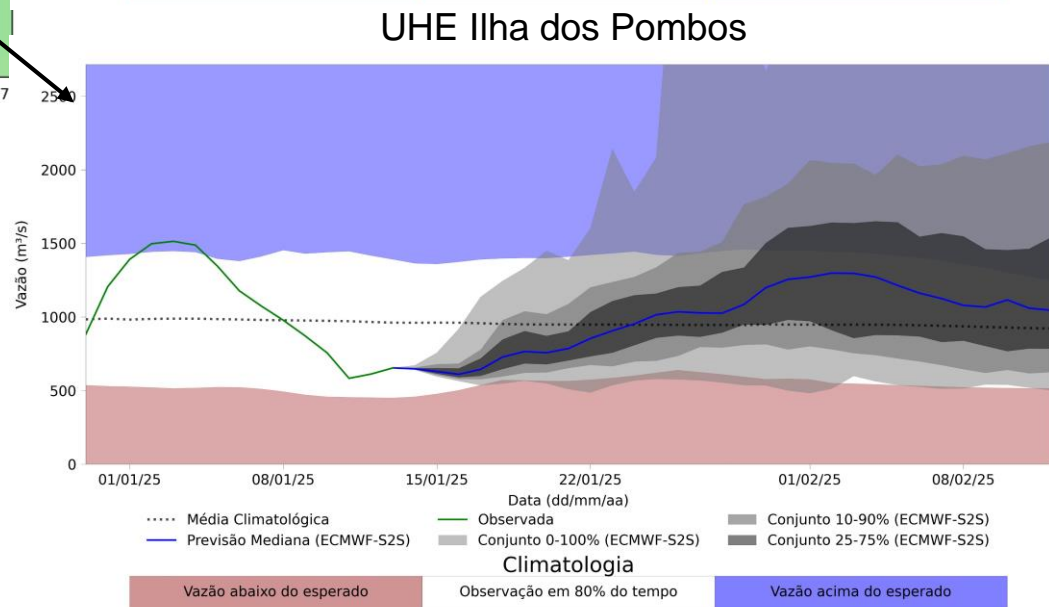
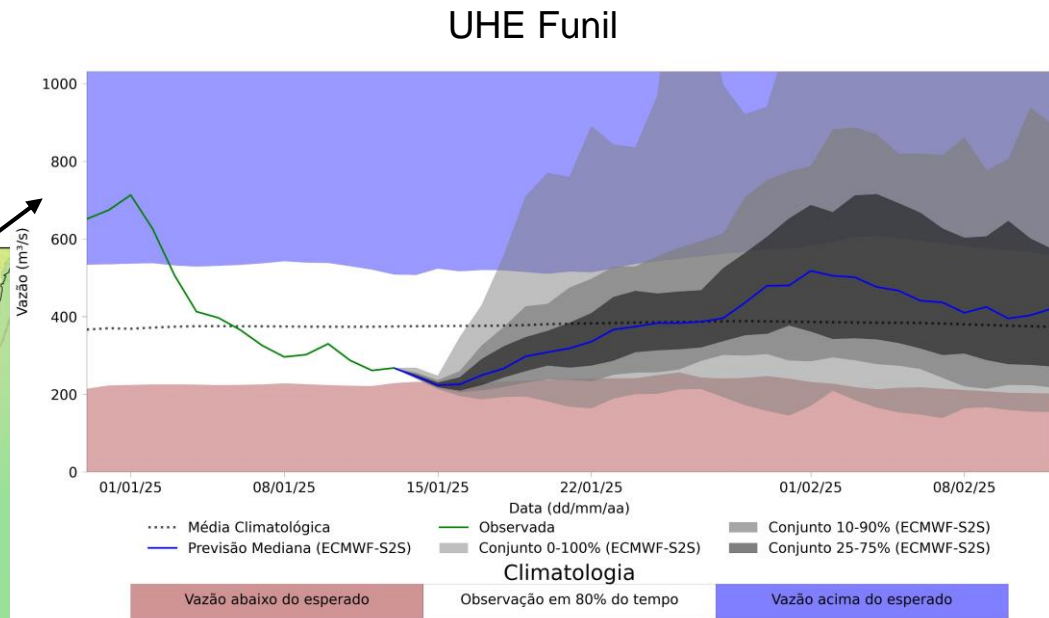
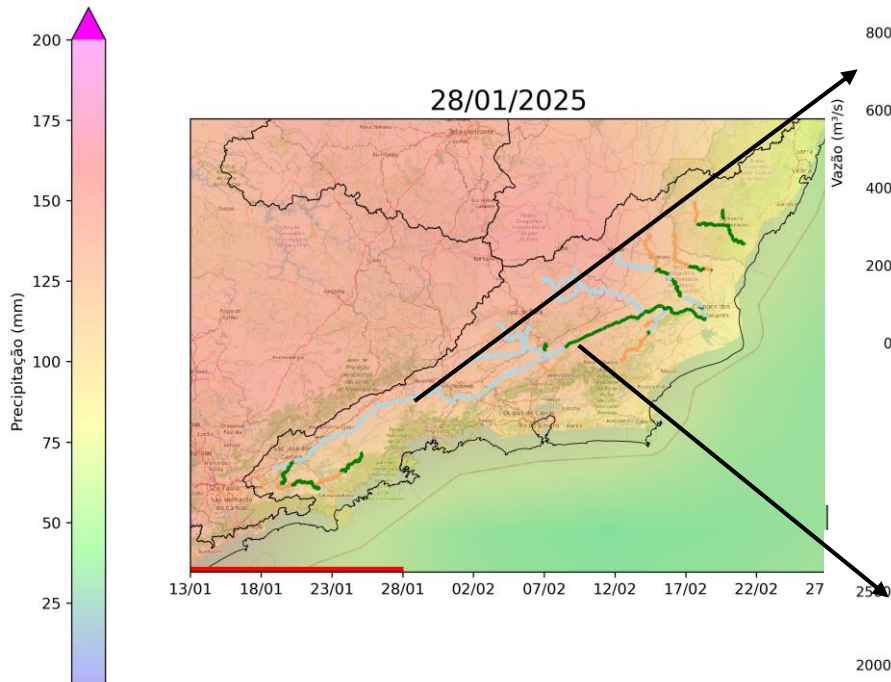
Fonte: Meteorologia (INMET/MERGE); Vazão (ANA/ONS)

MLT: 2003-2023

Previsão Meteorológica: ECMWF-S2S

Previsão de vazão natural na Bacia Rio Paraíba do Sul 30 dias (Modelo hidrológico MHD)

Previsão: 13/01 a 12/02/2025



- Abaixo Percentil 10%
- Abaixo da média climatológica
- Próximo da média climatológica
- Acima da média climatológica
- Acima Percentil 90%

Fonte: Meteorologia (INMET/MERGE); Vazão (ANA/ONS)

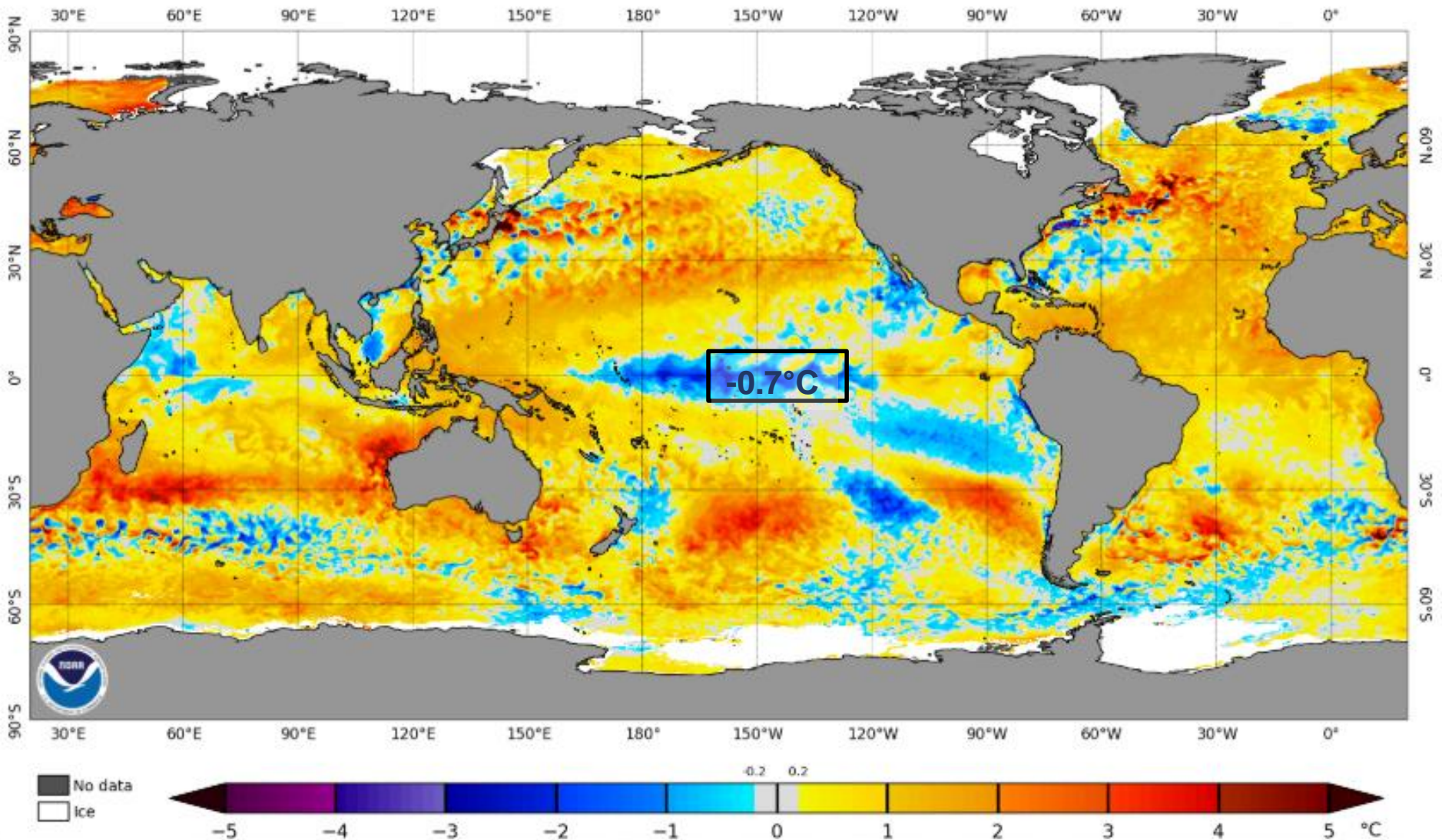
MLT: 2003-2023

Previsão Meteorológica: ECMWF-S2S

Status Atual: **La Niña** <=

Grad. Interhemisférico

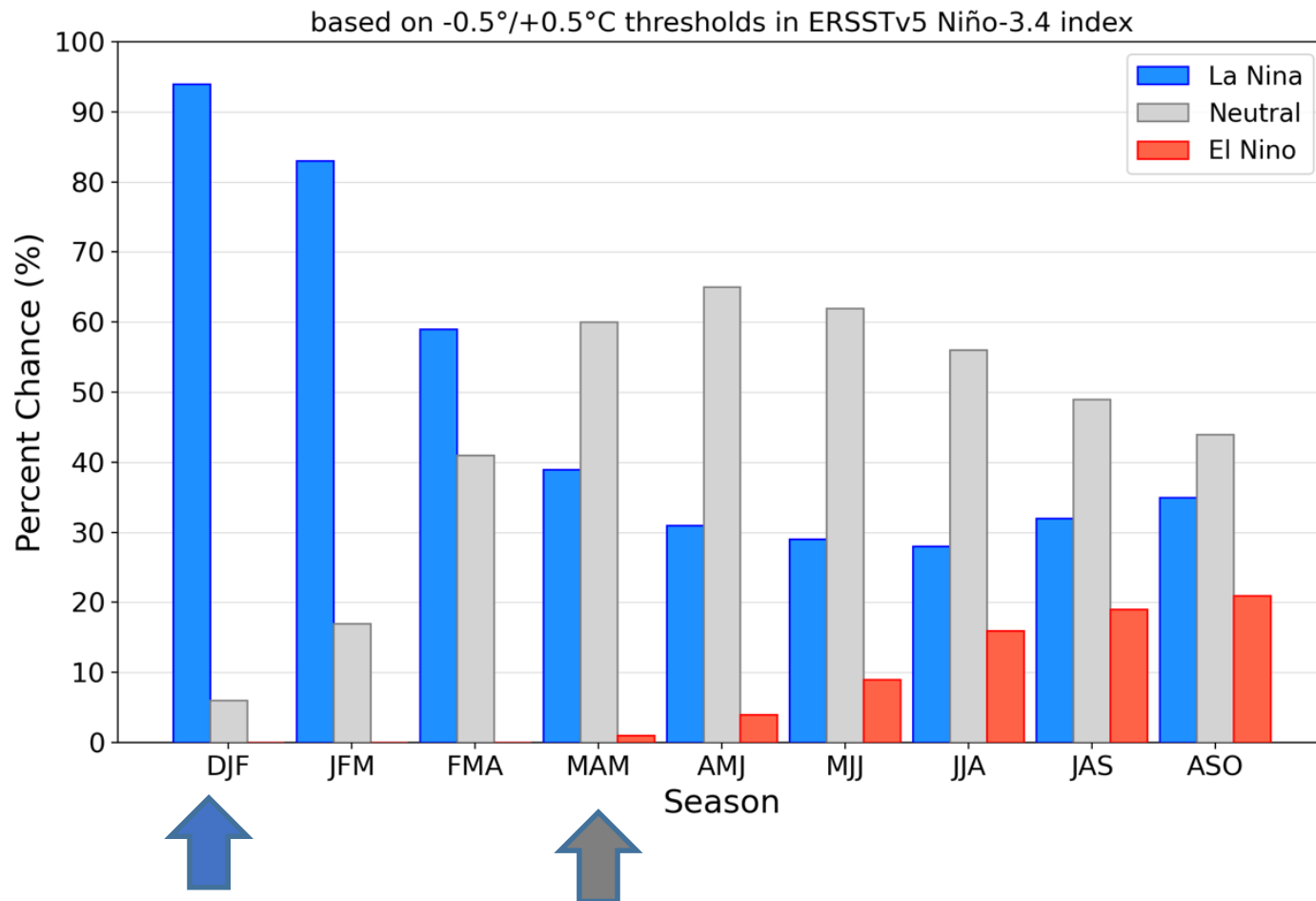
NOAA Coral Reef Watch Daily 5km SST Anomalies (v3.1) 11 Jan 2025



FONTE: NOAA

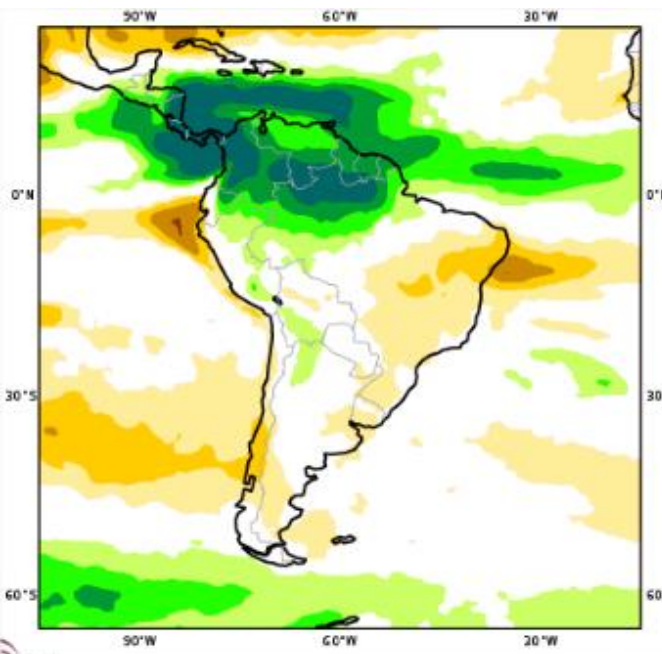
Previsão do “ENSO”

Official NOAA CPC ENSO Probabilities (issued January 2025)

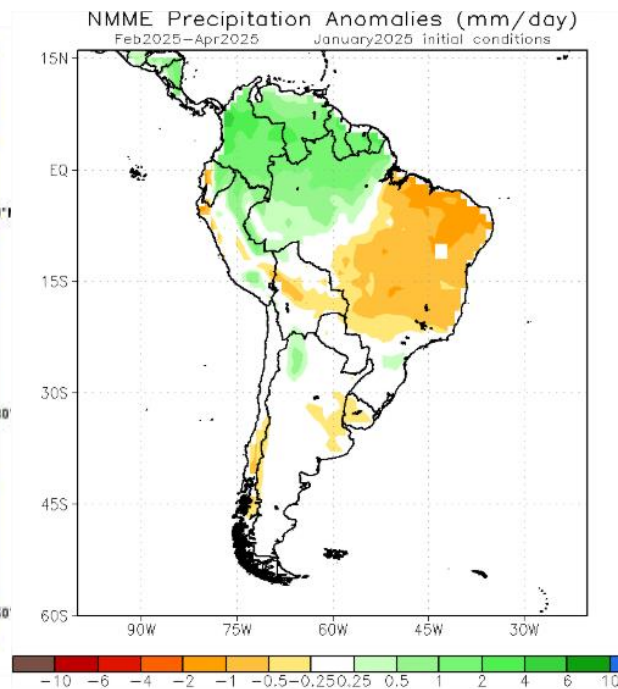


Previsão Sazonal de Chuva Multi-Modelo

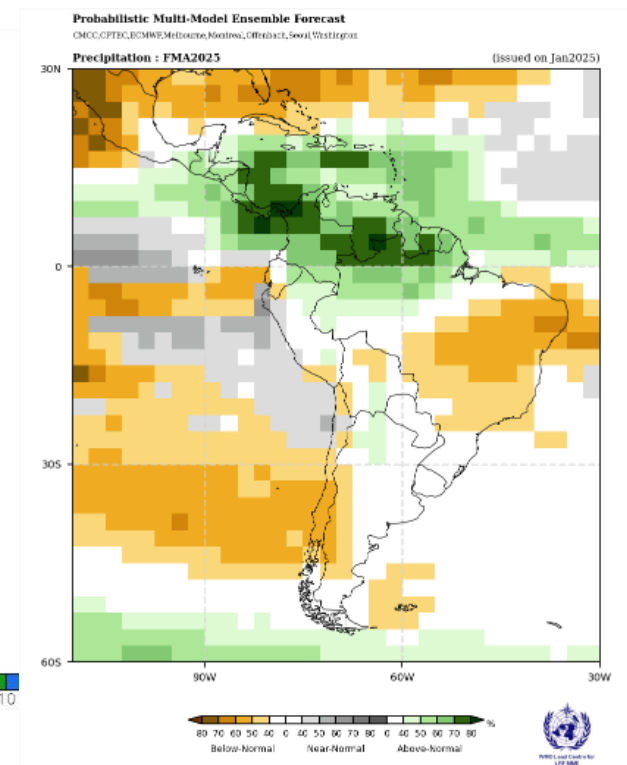
Fevereiro-Março Abril



Modelos Europeus



Modelos Norte Americanos



Modelos da WMO