



CEMADEN

Centro Nacional de Monitoramento e
Alertas de Desastres Naturais

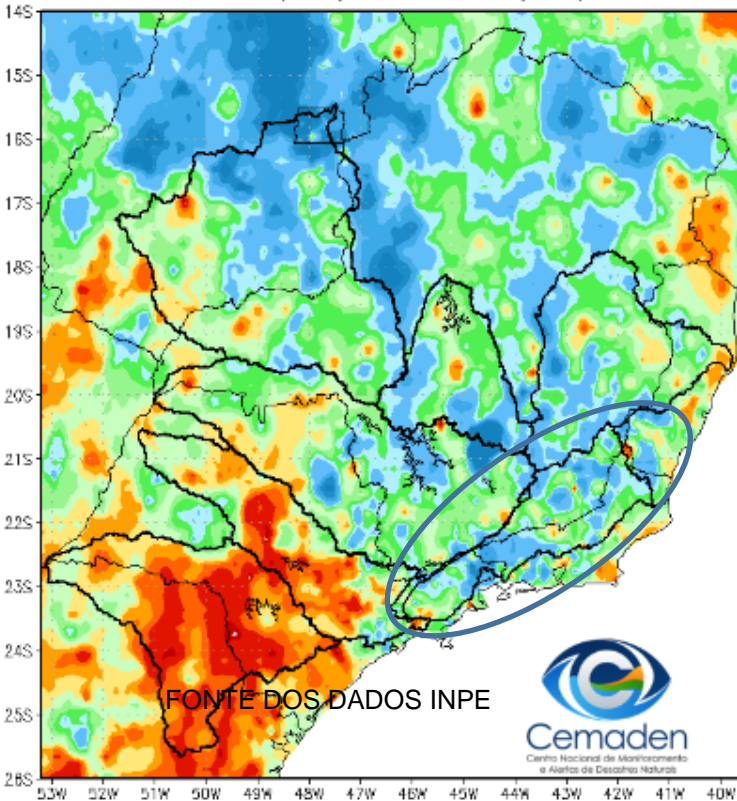
Monitoramento e Previsões
de Chuva para a
Bacia do Rio Paraíba do Sul

16 de janeiro de 2024

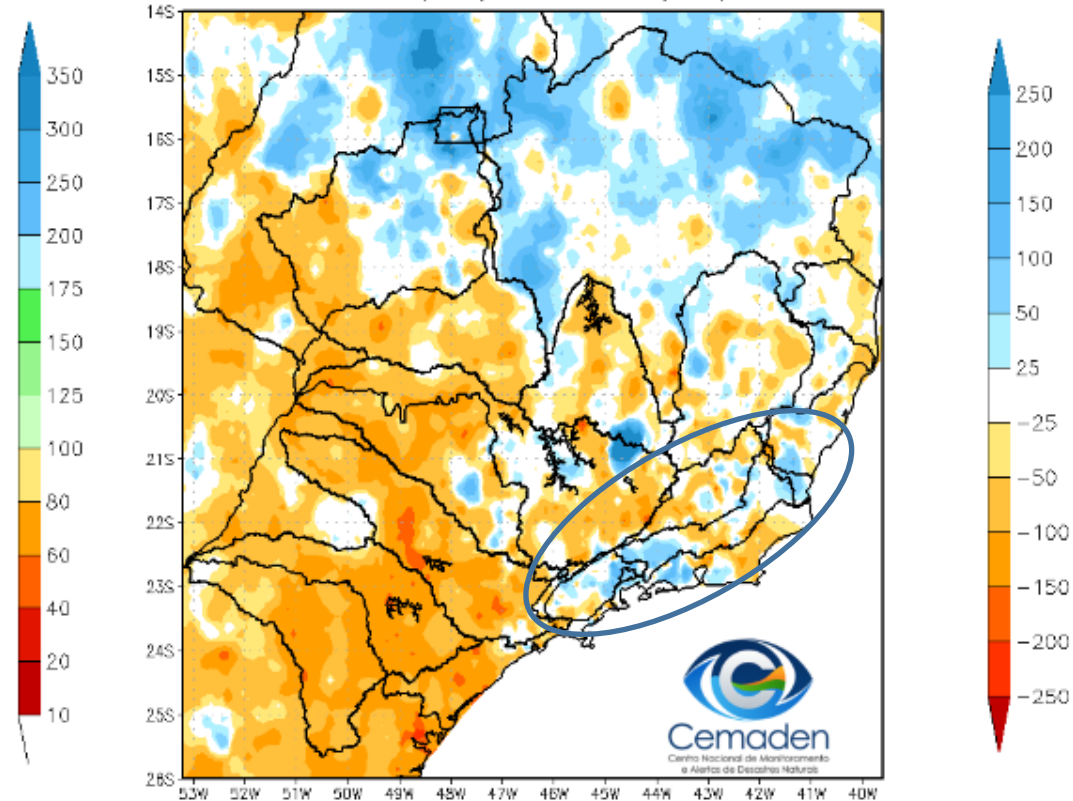


Precipitação acumulada nos últimos 30 dias

Precipitação Acumulada (mm) A.S.
Período: 16/12/2023 a 15/01/2024

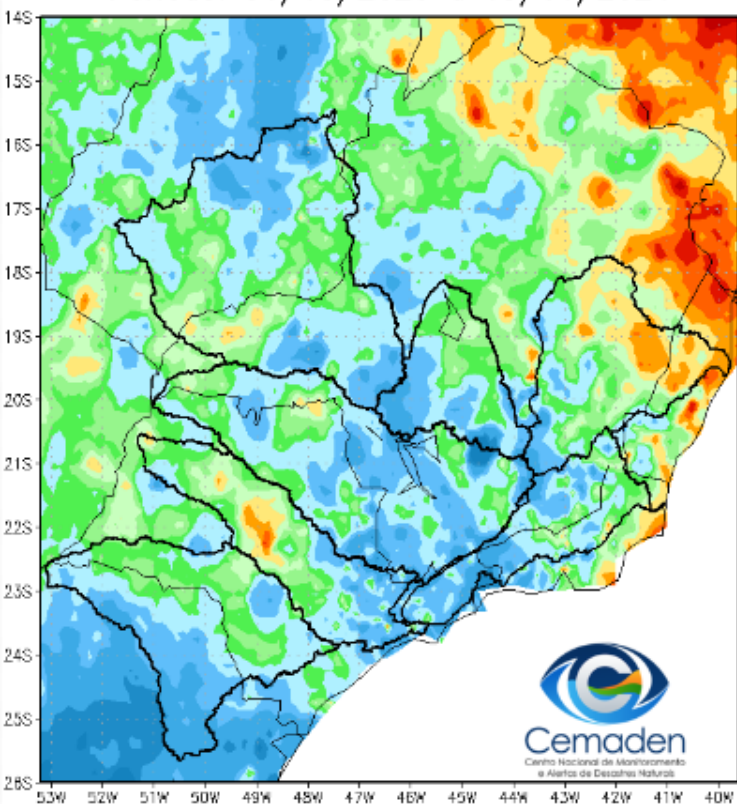


Anomalia de Precipitação (mm) A.S.
Período: 16/12/2023 a 15/01/2024

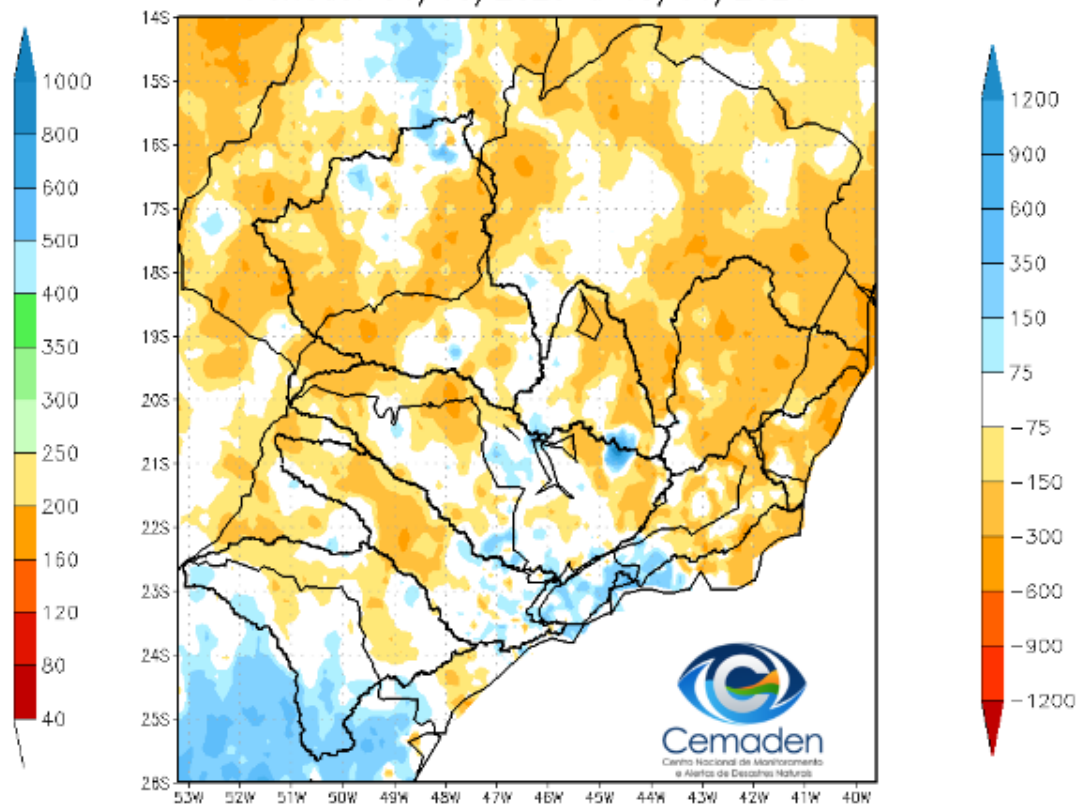


Precipitação acumulada no ano hidrológico

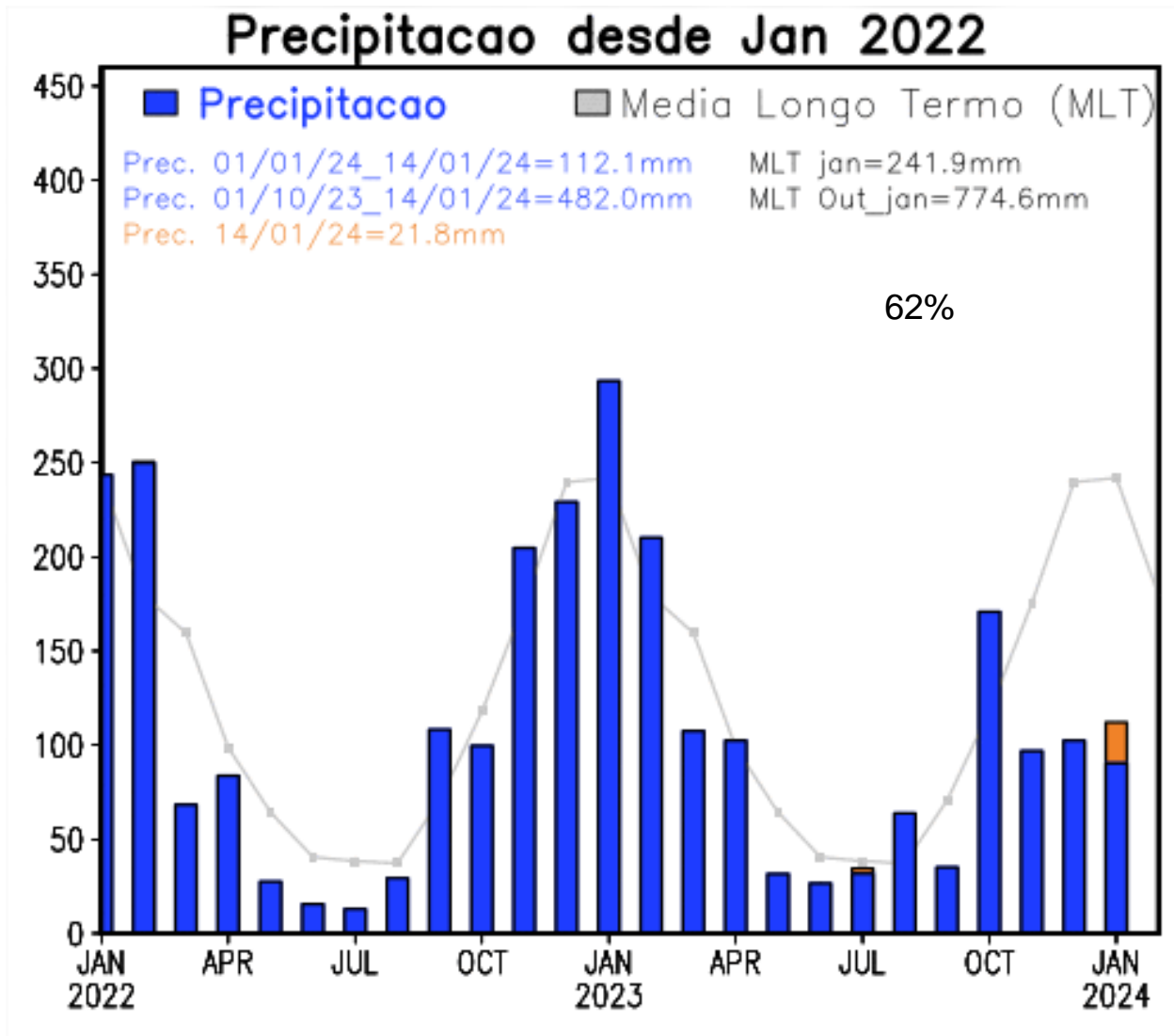
Precipitação Acumulada (mm) A.S.
Período: 01/10/2023 a 15/01/2024



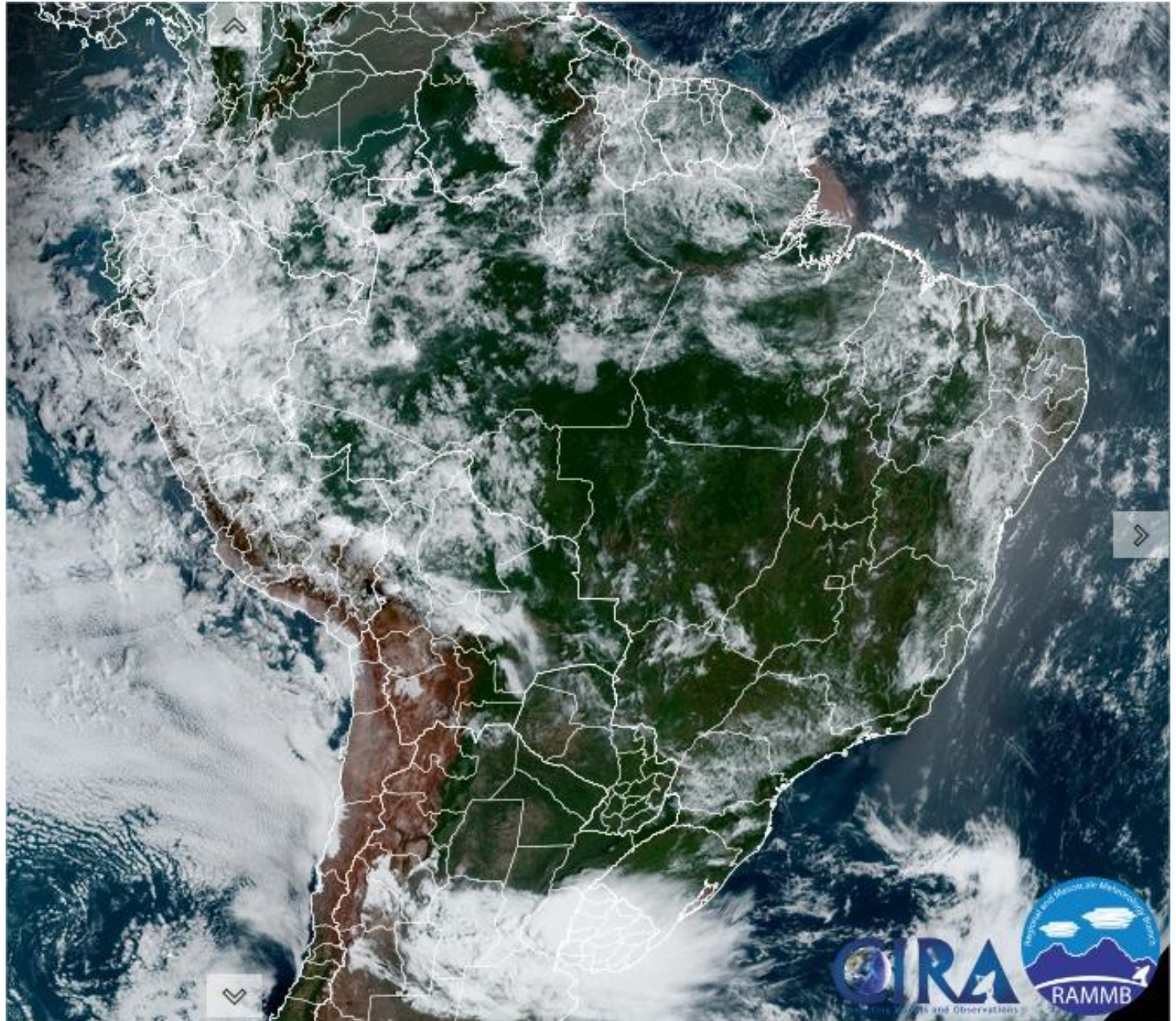
Anomalia de Precipitação (mm) A.S.
Período: 01/10/2023 a 15/01/2024



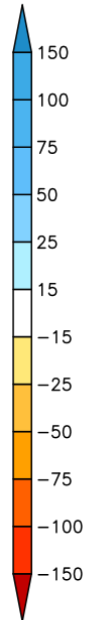
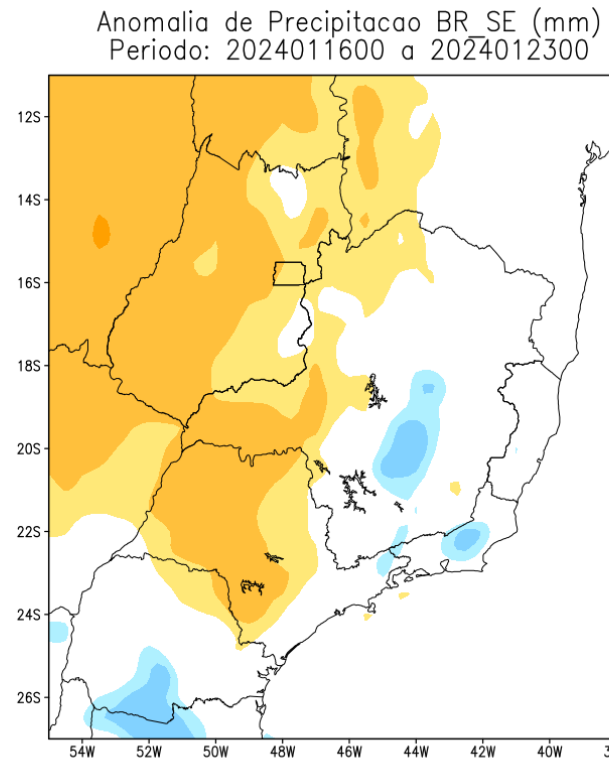
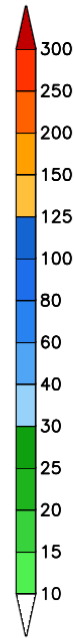
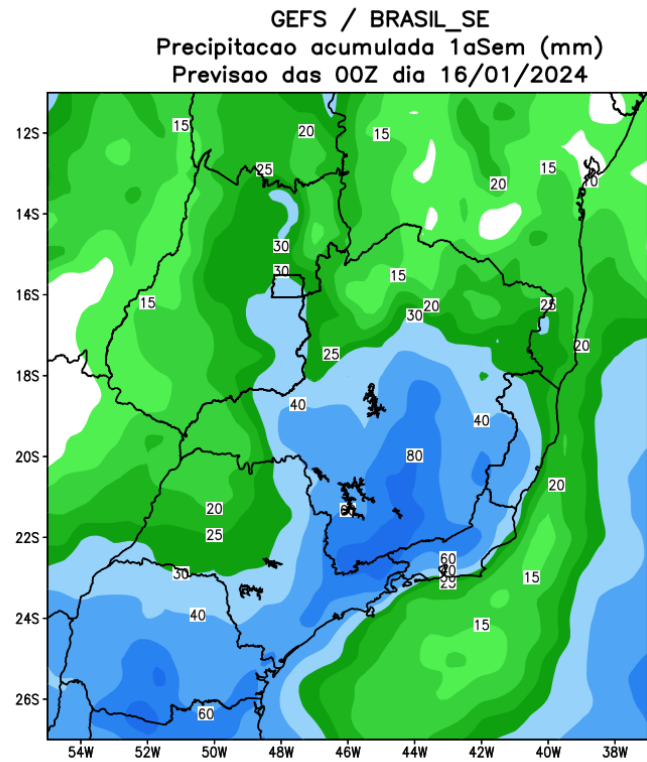
Precipitação nos últimos 2 anos



Situação meteorológica atual

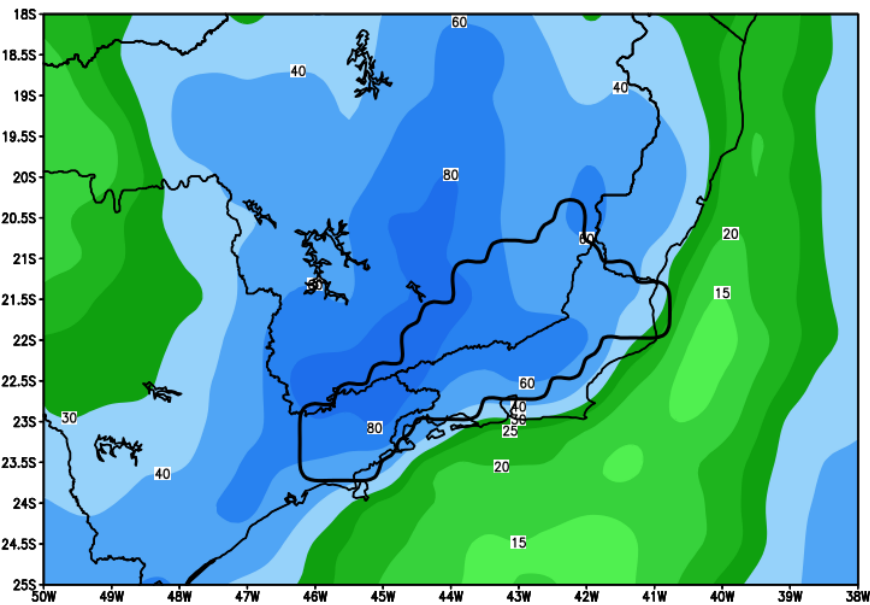


Previsão de chuva para os próximos 7 dias

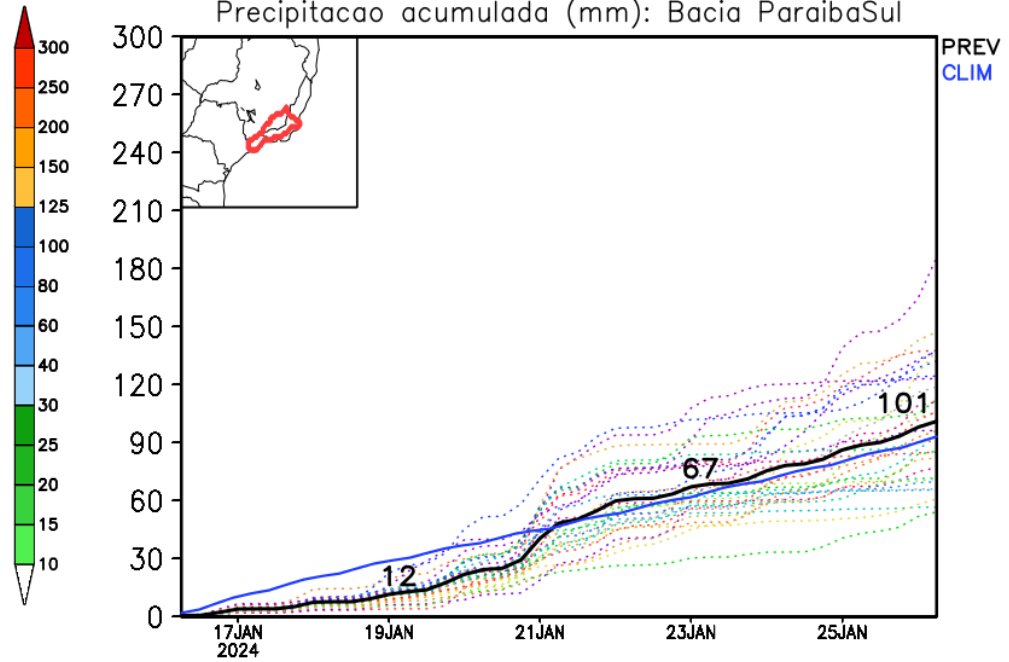


Rio Paraíba do Sul

GEFS / Bacia do Rio Paraíba do Sul
Precipitacao acumulada em 7 dias (mm)
Previsao das 00Z dia 16/01/2024



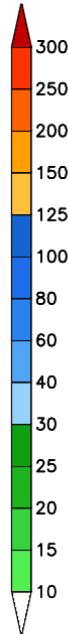
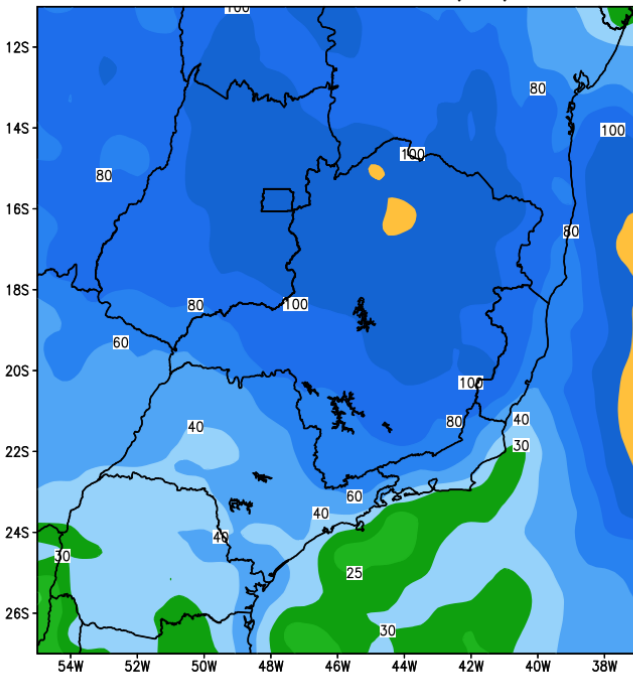
Precipitacao acumulada (mm): Bacia ParaibaSul



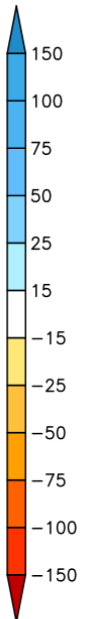
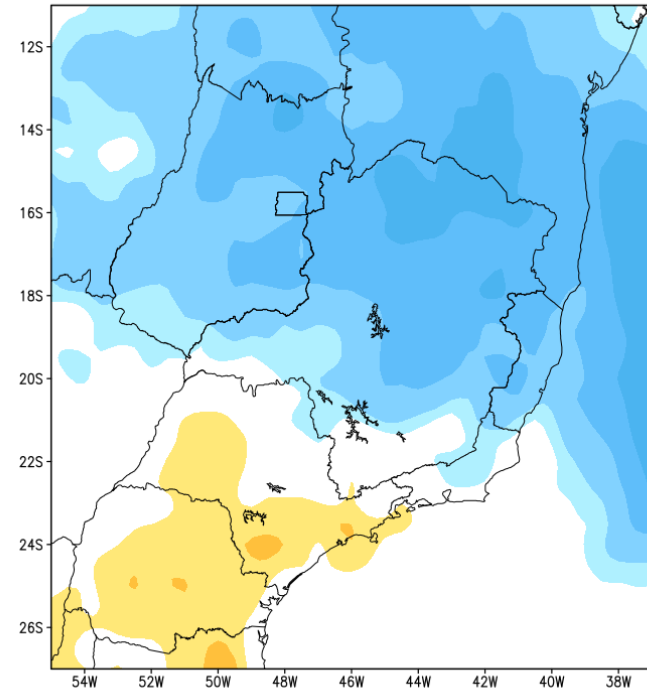
Modelo GFS/NOAA

Tendência para a 2a semana

GEFS / BRASIL_SE
Precipitacao acumulada 2aSem (mm)
Previsao das 00Z dia 16/01/2024

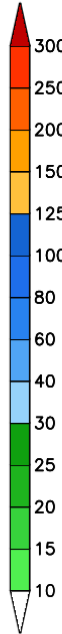
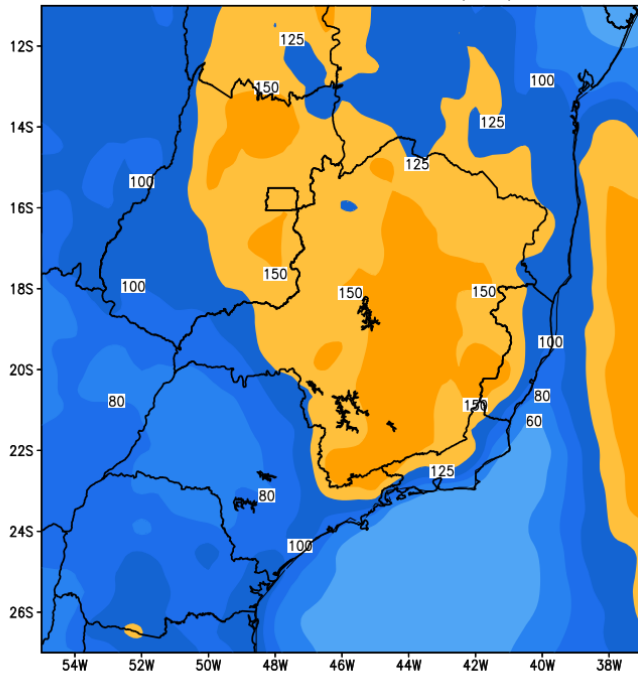


Anomalia de Precipitacao BR_SE (mm)
Periodo: 2024012400 a 2024013000

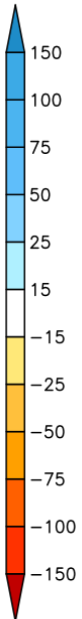
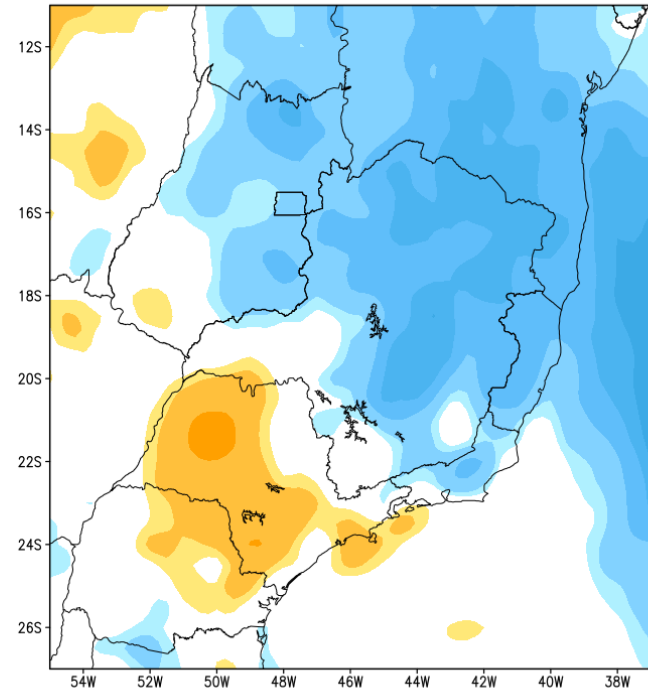


Tendência para as próximas duas semanas

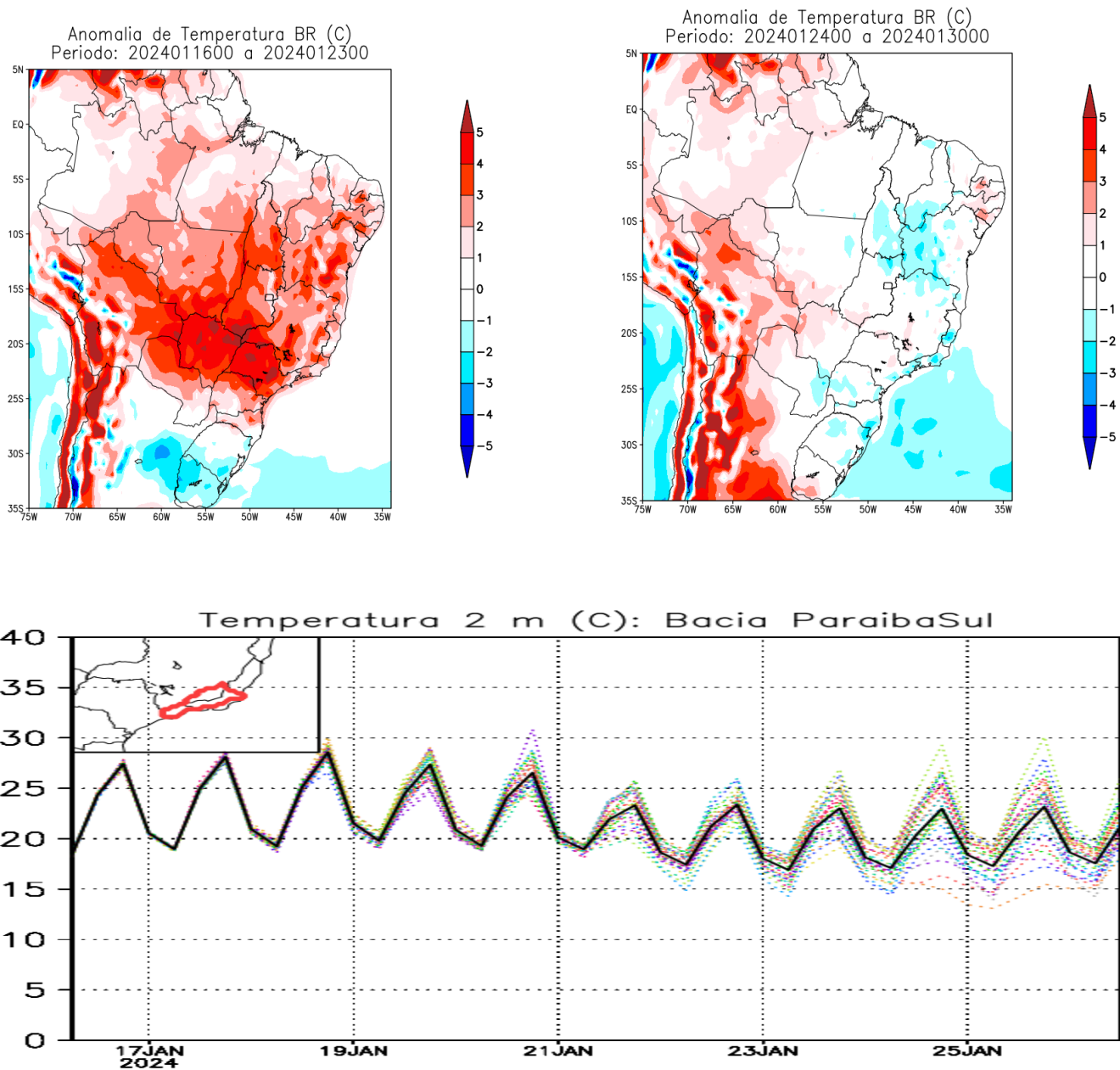
GEFS / BRASIL_SE
Precipitacao acumulada 14dias (mm)
Previsao das 00Z dia 16/01/2024



Anomalia de Precipitacao BR_SE (mm)
Periodo: 2024011600 a 2024013000

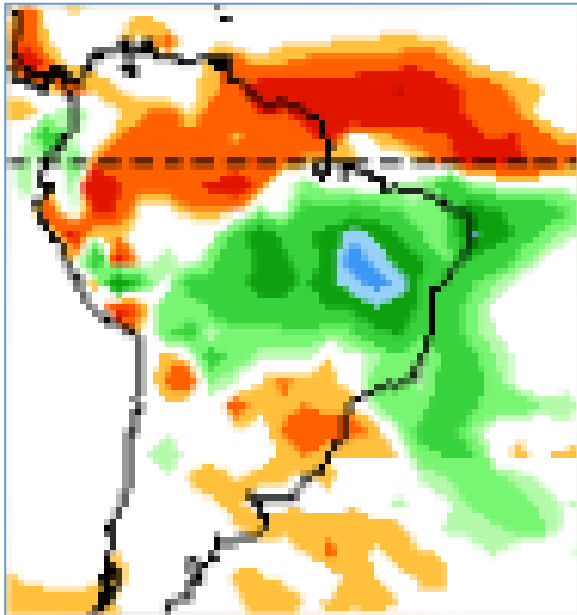


Previsão de Temperatura para as próximas duas semanas

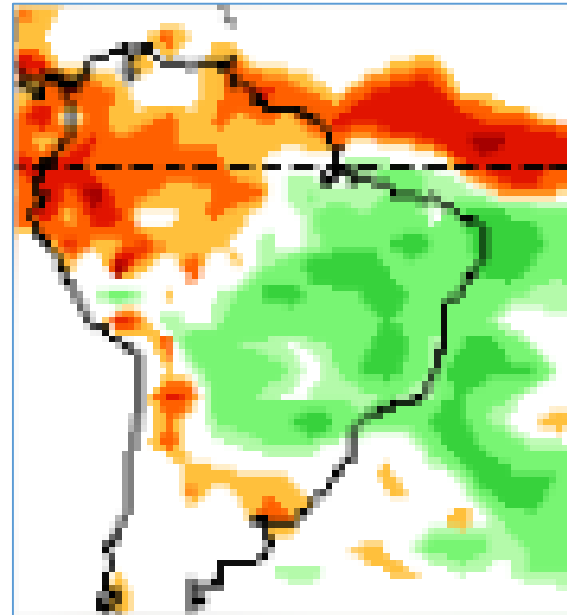


Tendência 3a e 4a semanas

30/01-05/02

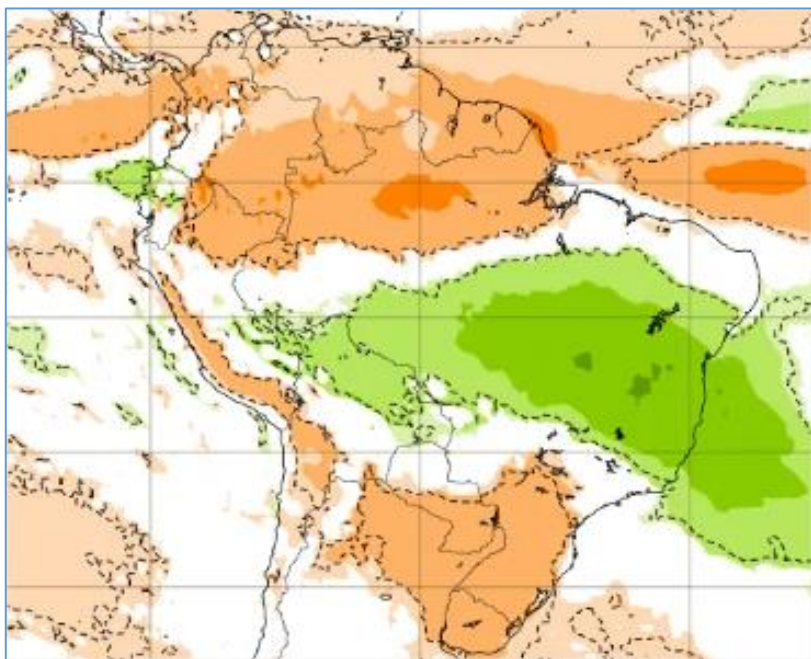


06-12/02

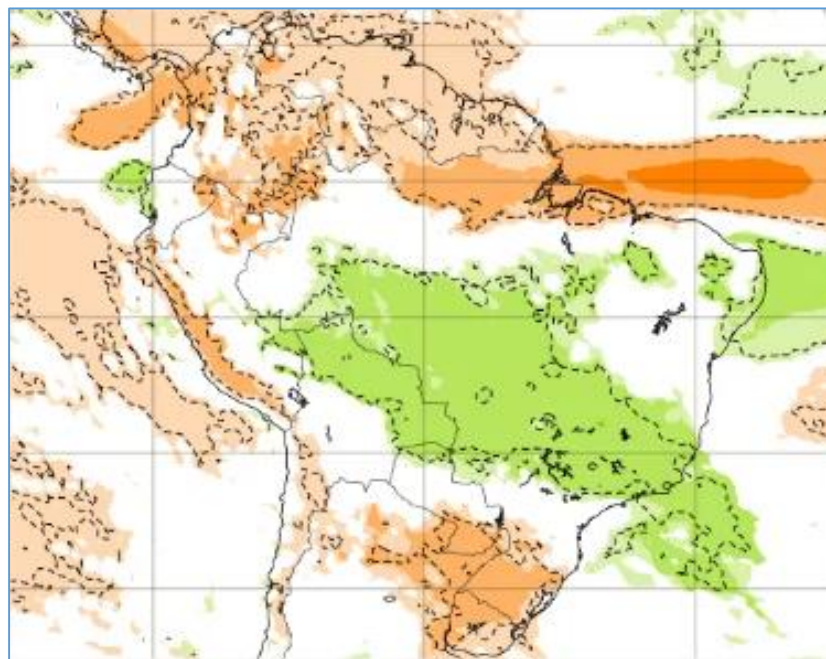


Tendência para 3ª e 4ª semanas

29/01-04/02

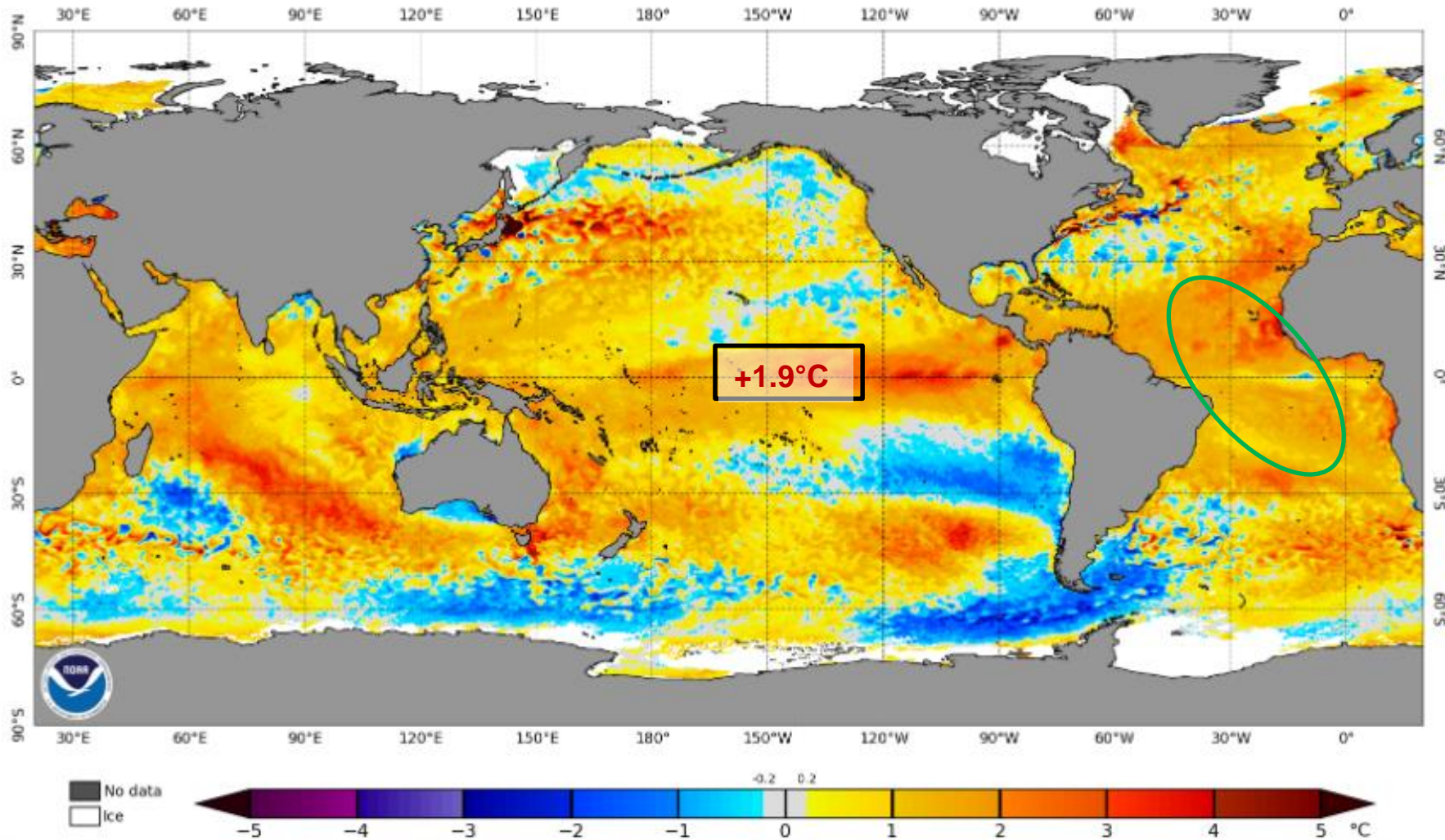


05-11/02



Status Atual: El Niño

NOAA Coral Reef Watch Daily 5km SST Anomalies (v3.1) 14 Jan 2024



Previsão do “ENSO”

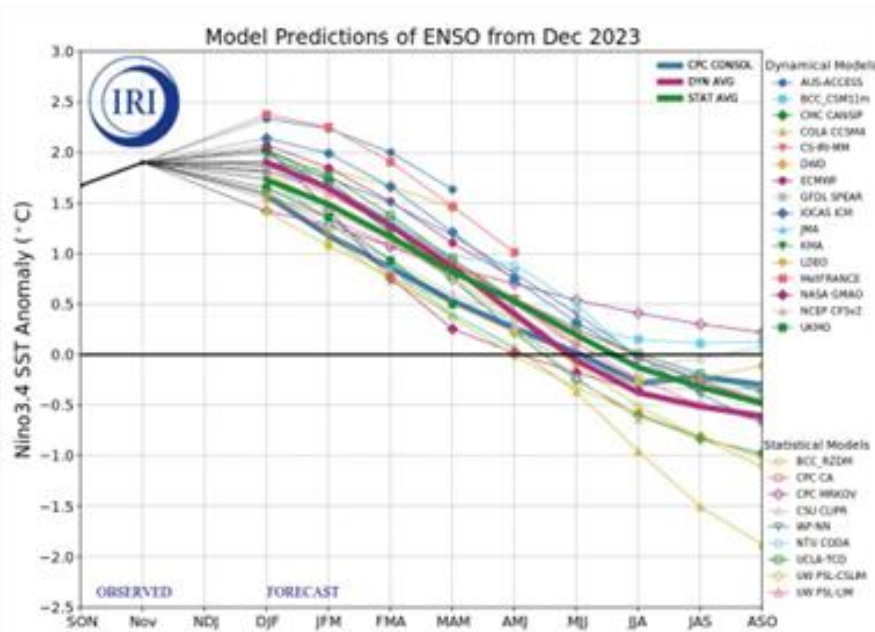
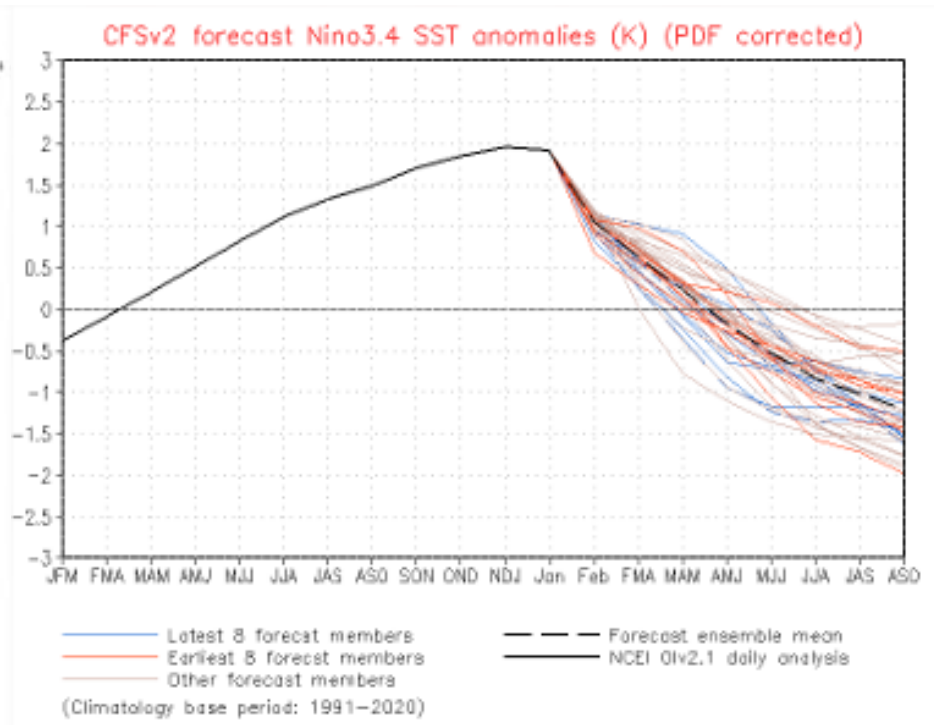
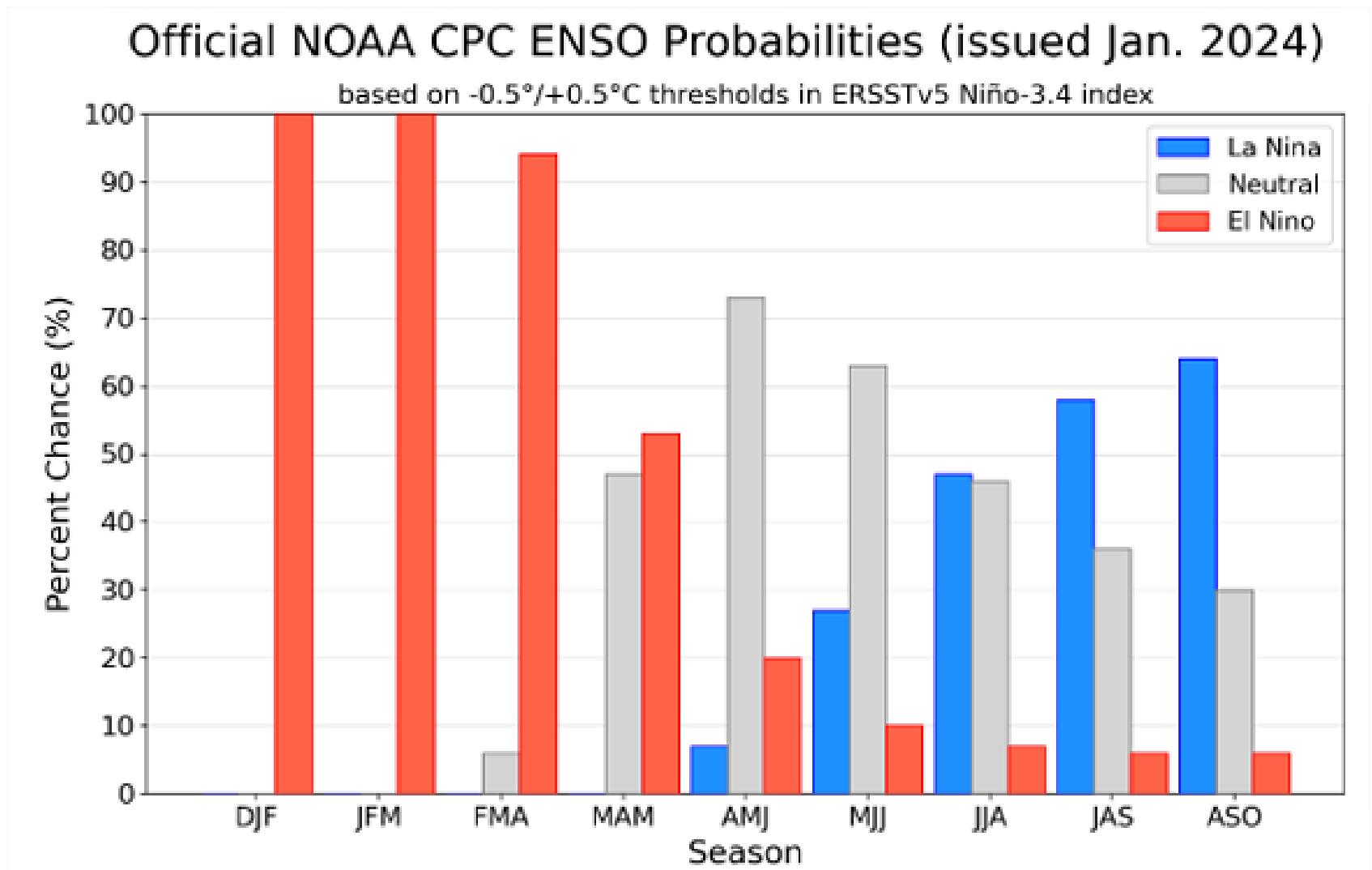


Figure provided by the International Research Institute (IRI) for Climate and Society (updated 19 December 2023).

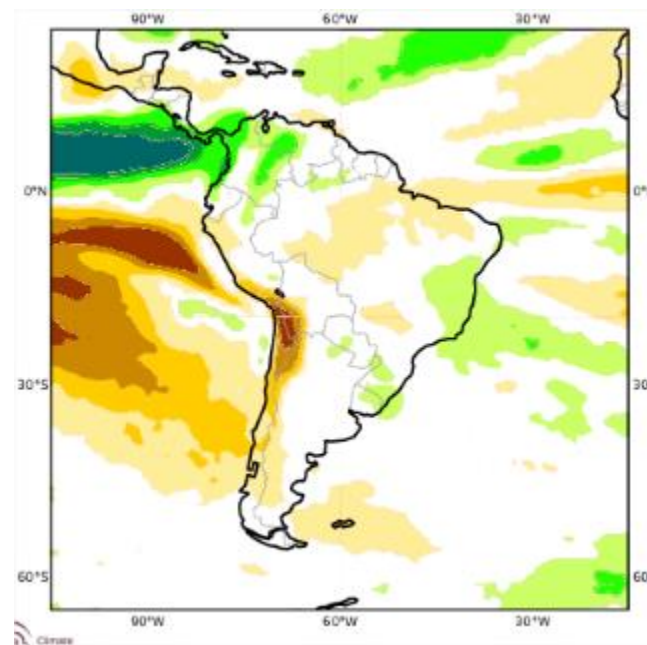


Atualizado 15 de janeiro

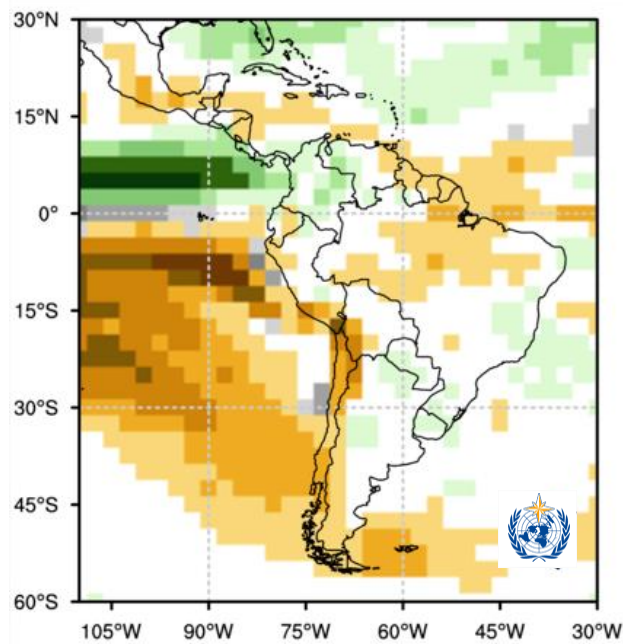
Previsão do “ENSO”



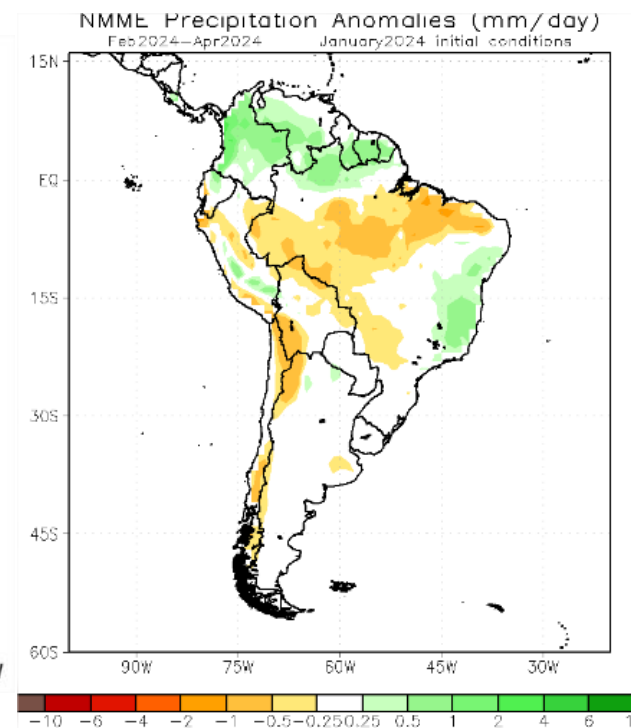
Previsão Sazonal de Chuva Multi-Modelo para FMA



Modelos Europeus



Modelos da Organização Meteorológica Mundial



Modelos Americanos

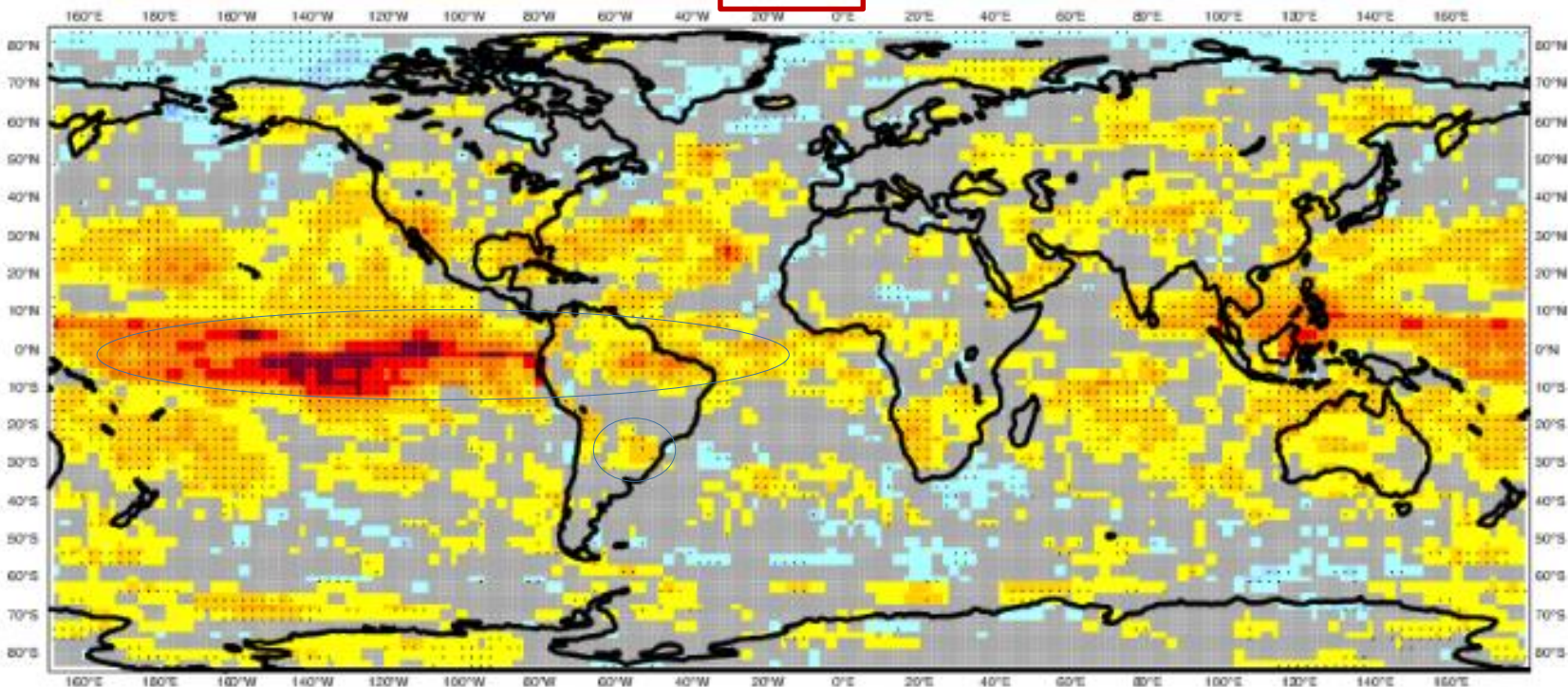
Verificação da Previsão Sazonal de Chuva

Anomaly Correlation Coefficient for 0001 with 25 ensemble members

Precipitation

Hindcast period 1981-2014 with start in December average over months 3 to 5

Black dots for values significantly different from zero with 95% confidence (1000 samples)



Modelo ECMWF