



**Cemaden**

Centro Nacional de Monitoramento  
e Alertas de Desastres Naturais

**Centro Nacional de Monitoramento e  
Alertas de Desastres Naturais**

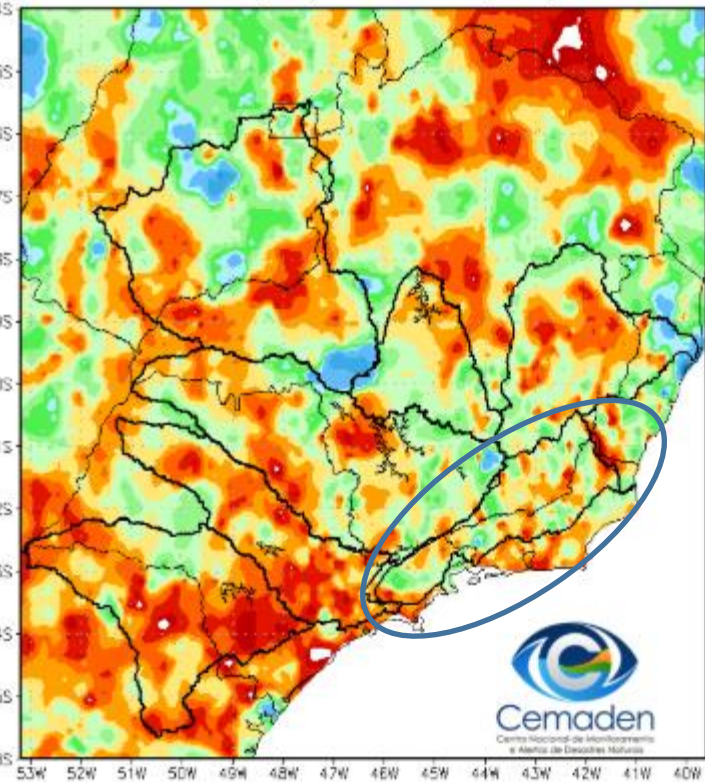
# Monitoramento e Previsões para a Bacia do Rio Paraíba do Sul

**14 de abril de 2026**

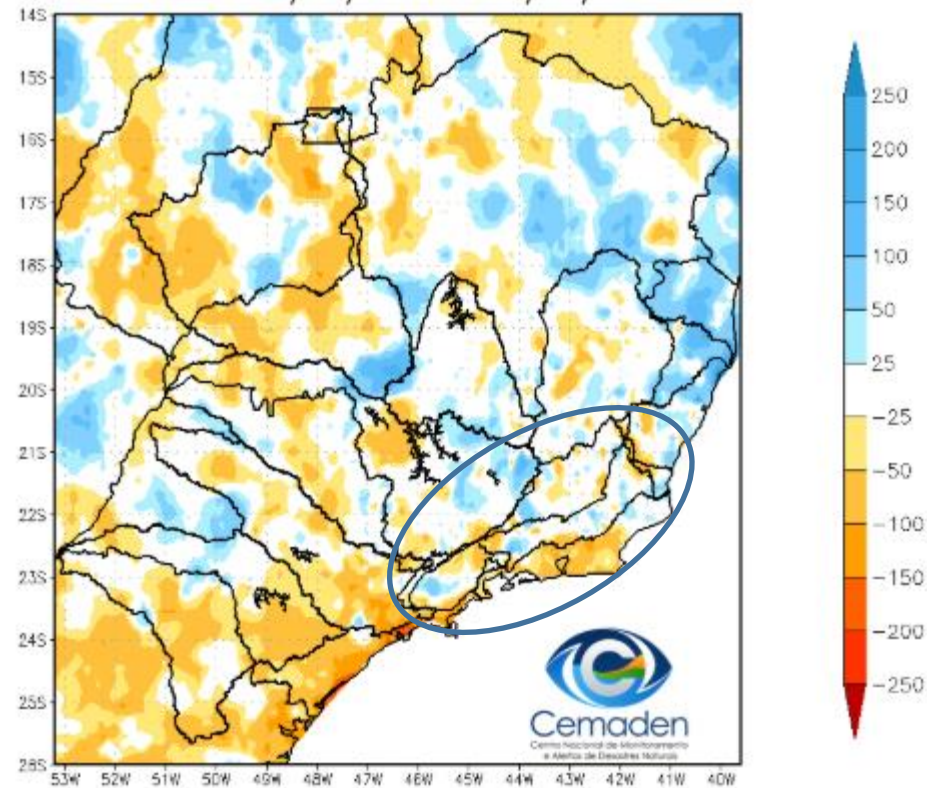


# Precipitação acumulada nos últimos 30 dias

Precipitação Acumulada (mm) A.S.  
Período: 14/03/2026 a 13/04/2026

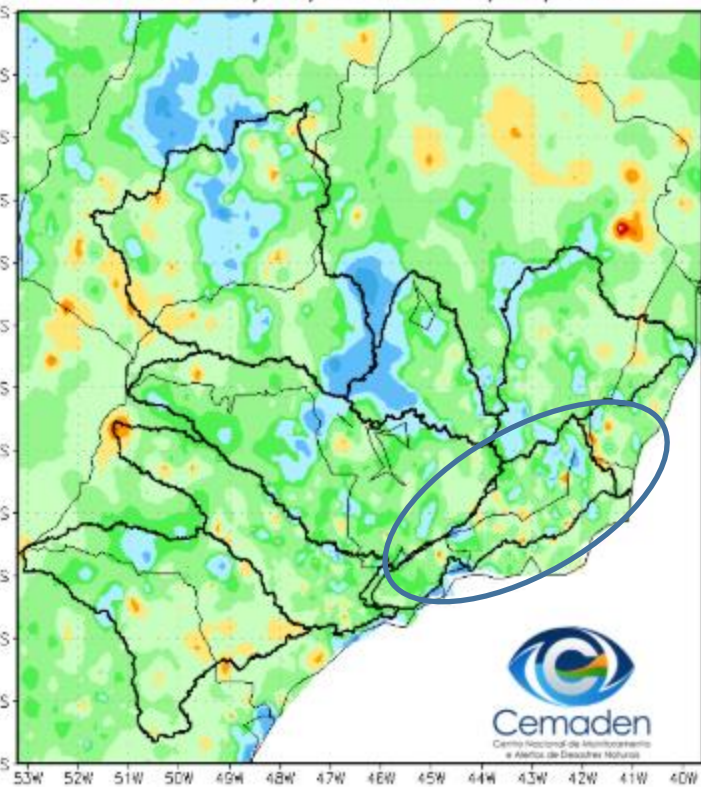


Anomalia de Precipitação (mm) A.S.  
Período: 14/03/2026 a 13/04/2026

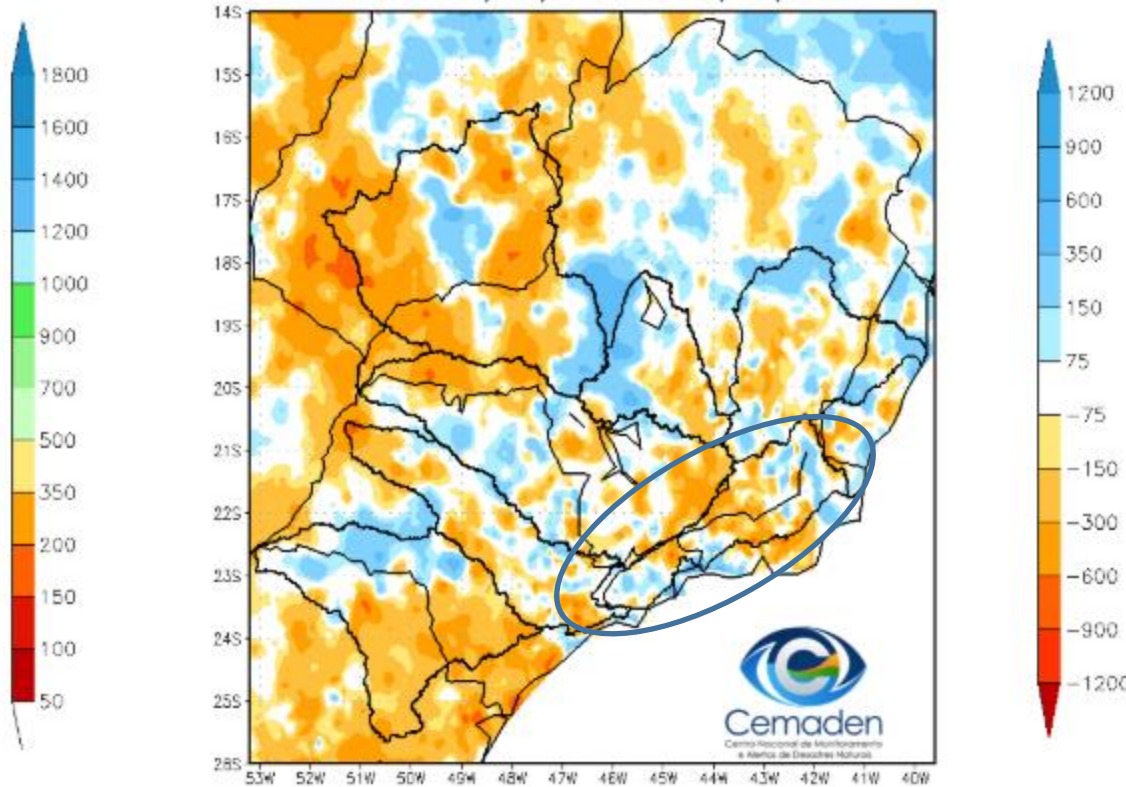


# Precipitação acumulada no ano hidrológico

Precipitação Acumulada (mm) A.S.  
Período: 01/10/2025 a 13/04/2026

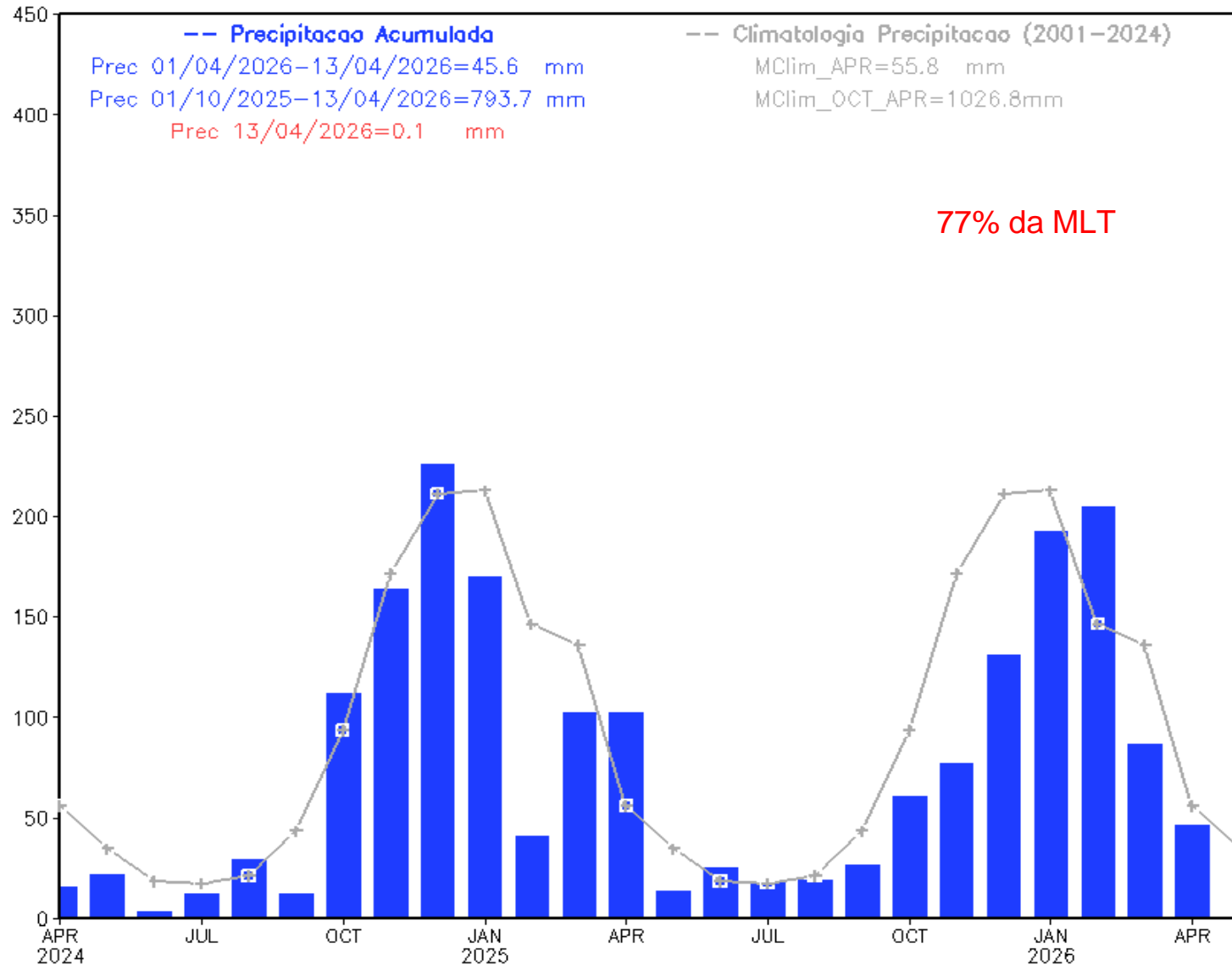


Anomalia de Precipitação (mm) A.S.  
Período: 01/10/2025 a 13/04/2026



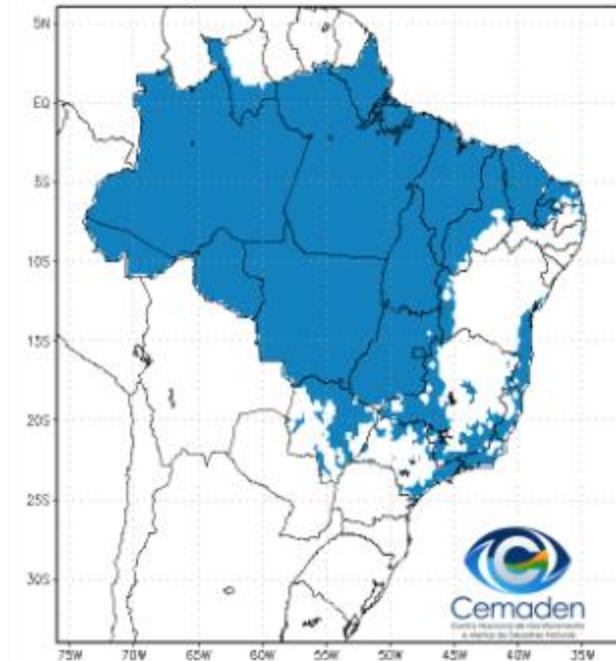
# Evolução Temporal da Precipitação

## Precipitação Bacia do Rio Paraíba\_Sul desde APR 2024

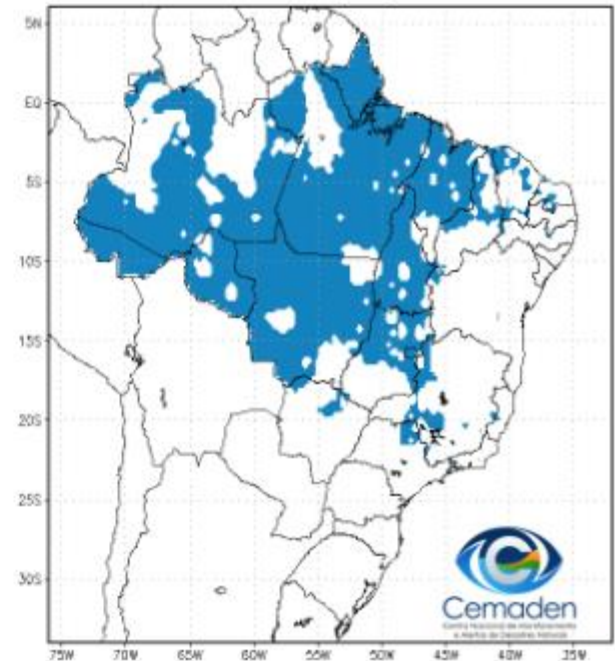


# Situação da Estação Chuvosa

Climatologia da Precipitação (1999–2025)  
Inferior 2 mm/dia por 4 de 5 dias Período: 13/04



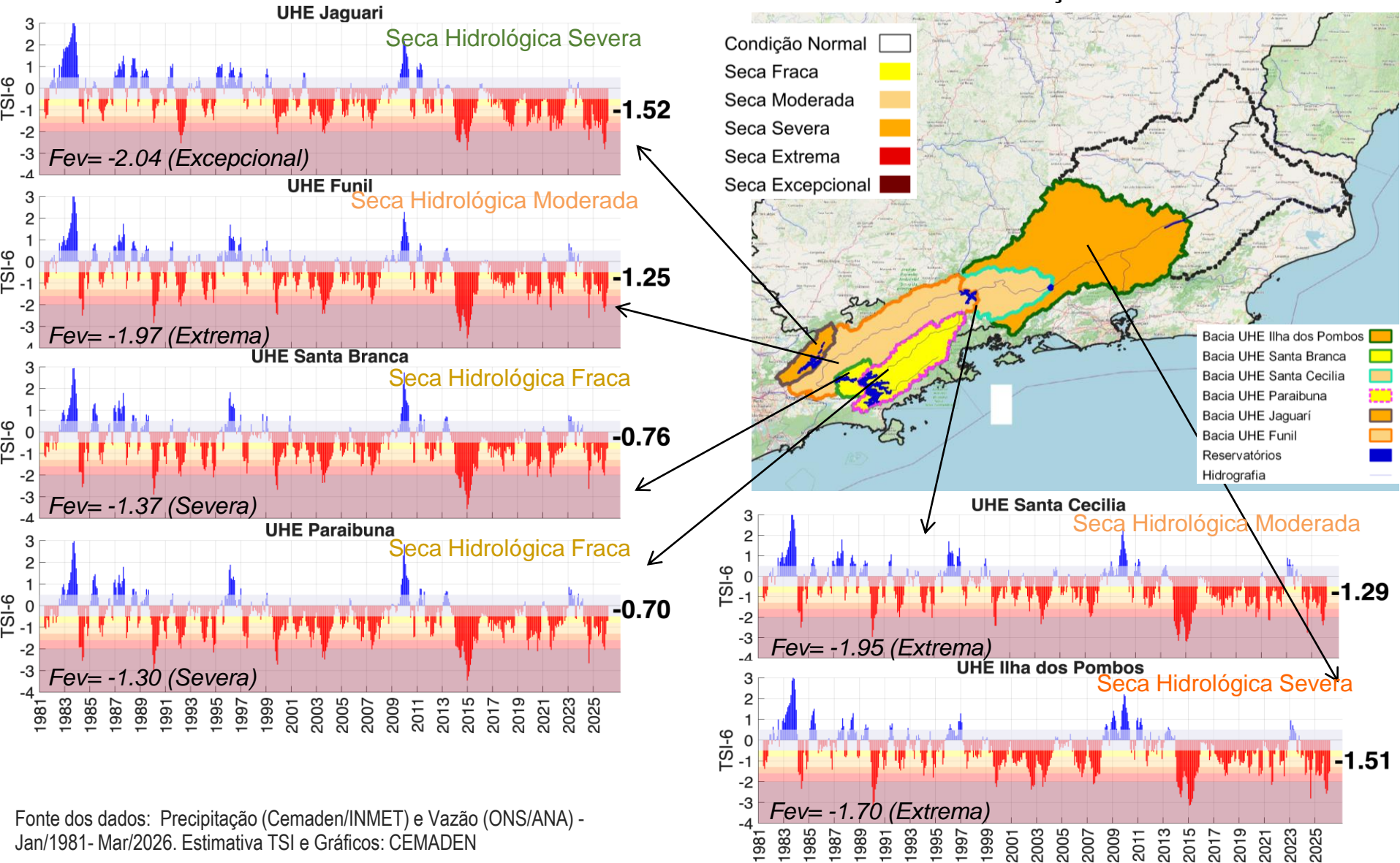
Precipitação Inferior 2 mm/dia por 4 de 5 dias  
Período: 13/04/2026



# Índice de Seca Bivariado (Chuva-Vazão) - TSI

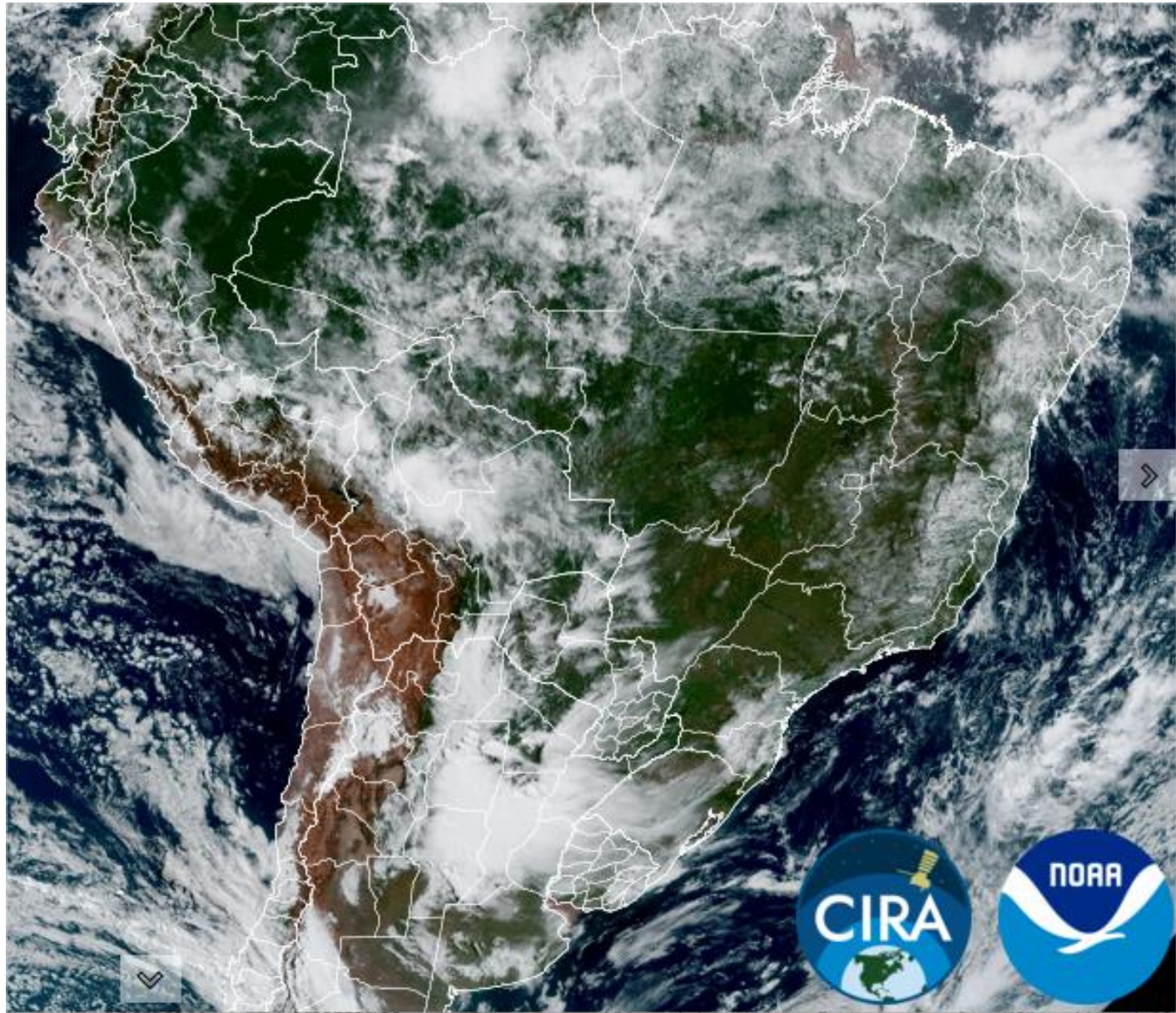
## (Two-variate Standardized Index – Escala de 6 meses)

TSI-6 Março 2026

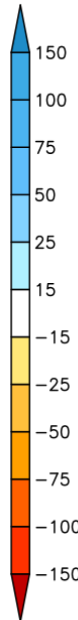
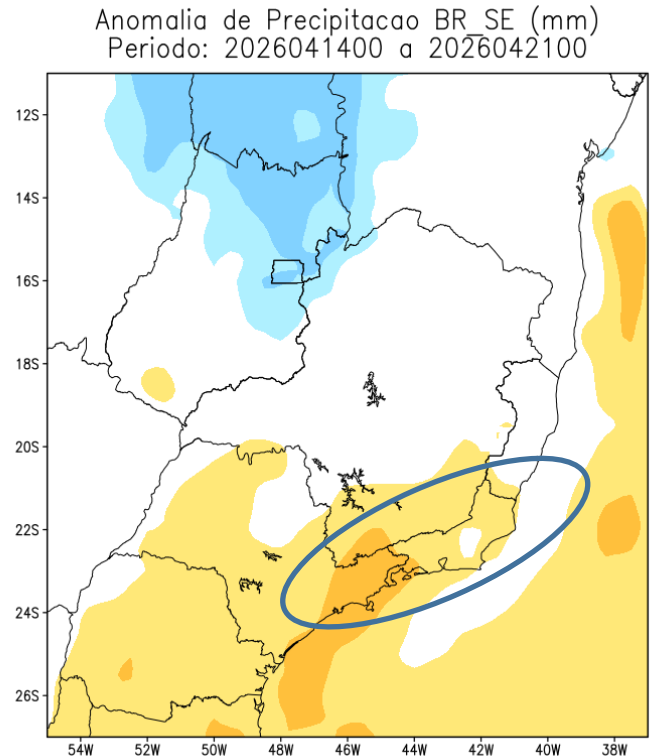
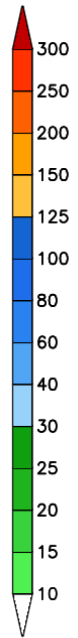
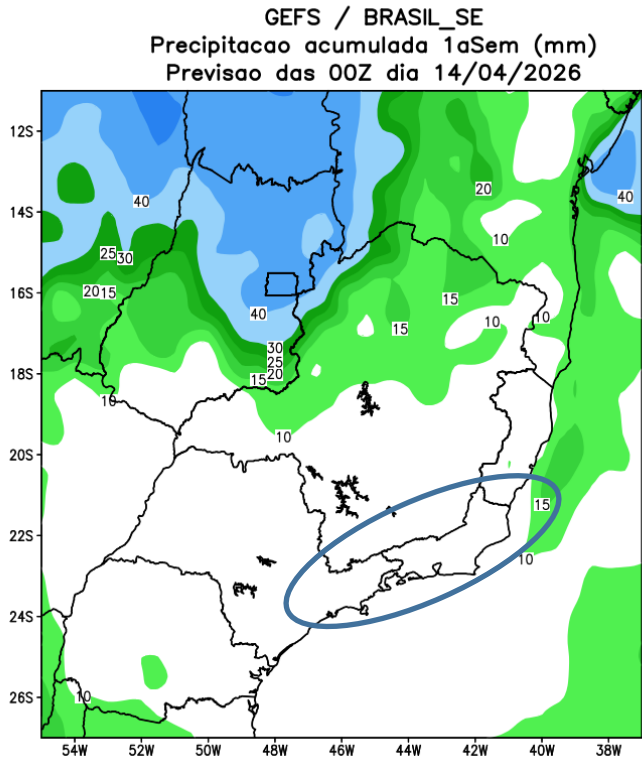


Fonte dos dados: Precipitação (Cemaden/INMET) e Vazão (ONS/ANA) - Jan/1981- Mar/2026. Estimativa TSI e Gráficos: CEMADEN

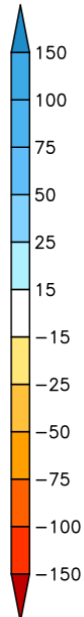
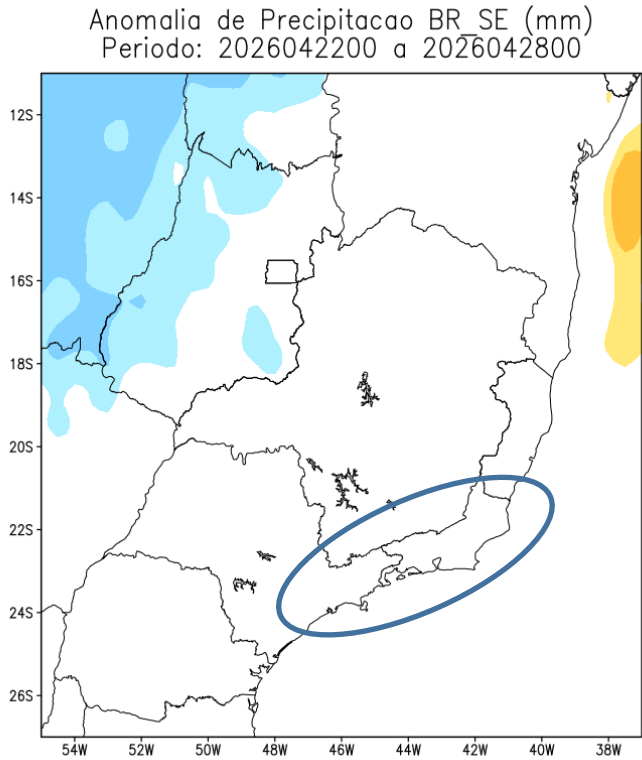
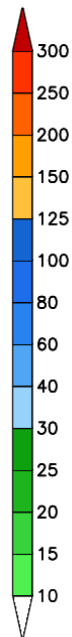
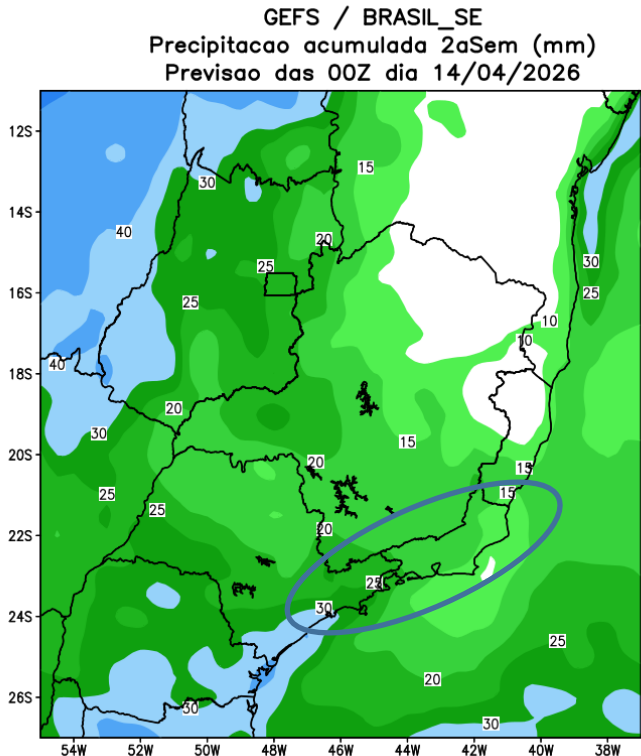
# Situação meteorológica atual



# Previsão Primeira Semana

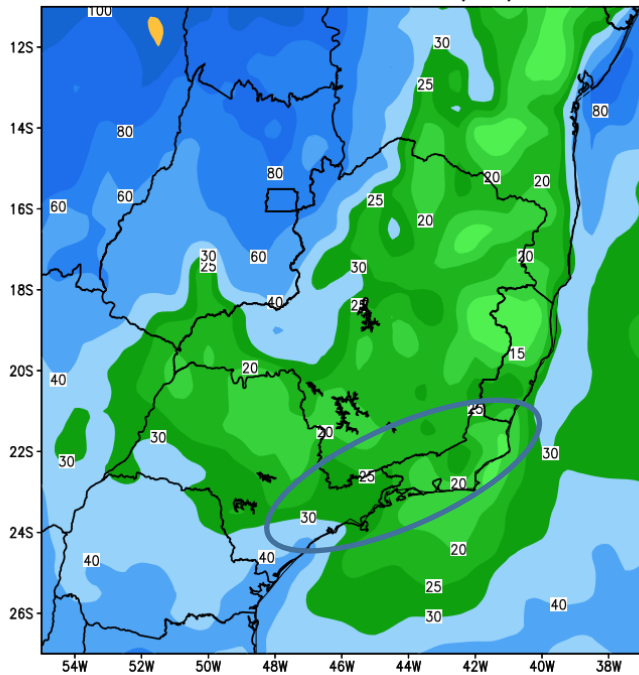


# Previsão Segunda Semana

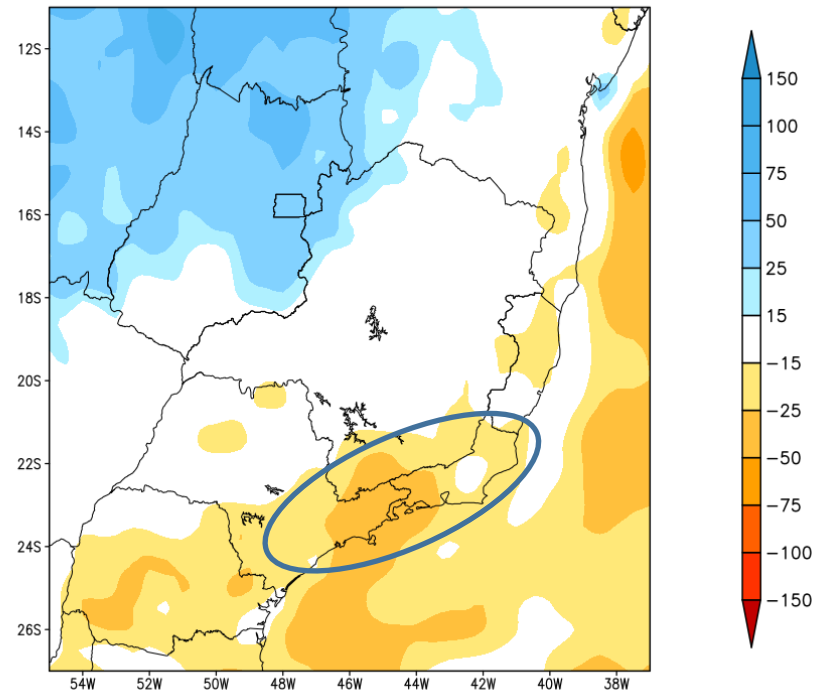


# Previsão Próximas duas Semanas

GEFS / BRASIL\_SE  
Precipitacao acumulada 14dias (mm)  
Previsao das 00Z dia 14/04/2026



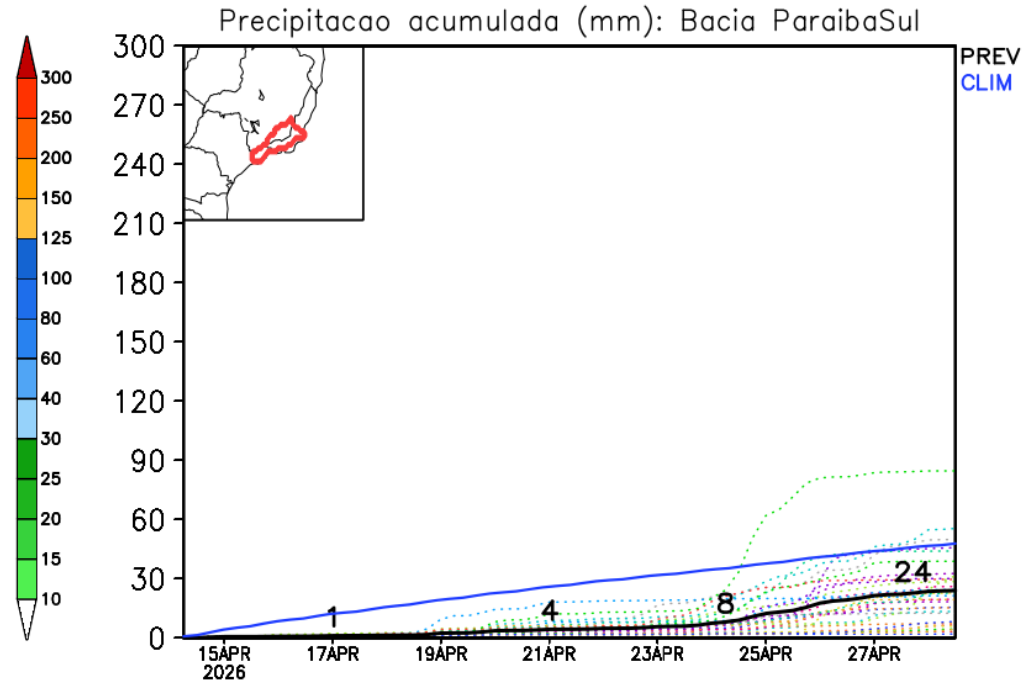
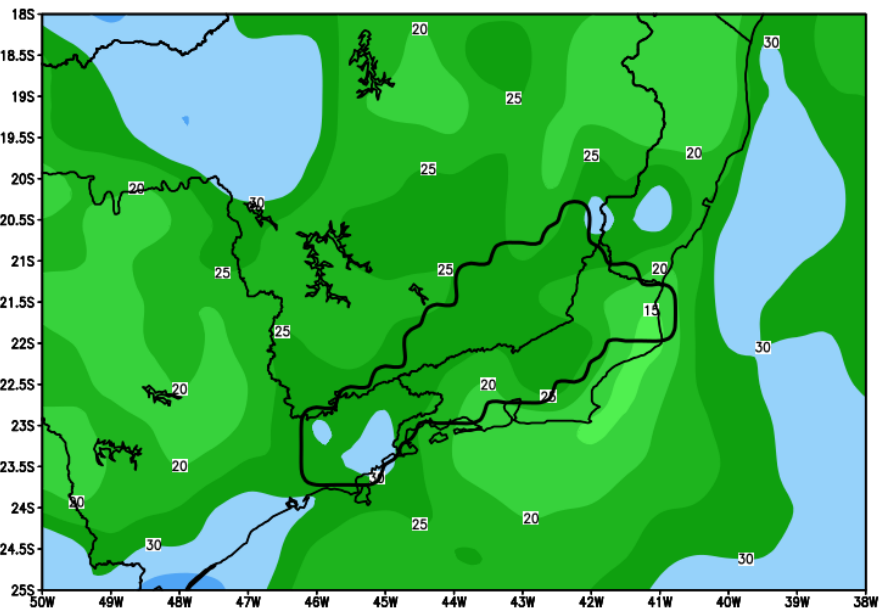
Anomalia de Precipitacao BR\_SE (mm)  
Periodo: 2026041400 a 2026042800



# Rio Paraíba do Sul

previsão de chuva em 14 dias

GEFS / Bacia do Rio Paraíba do Sul  
Precipitação acumulada em 14 dias (mm)  
Previsão das 00Z dia 13/04/2026



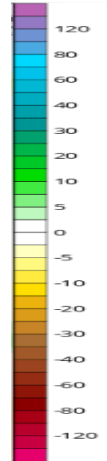
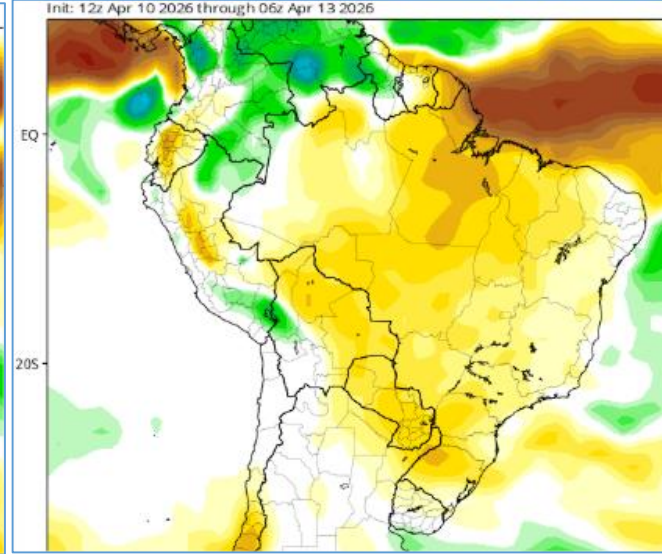
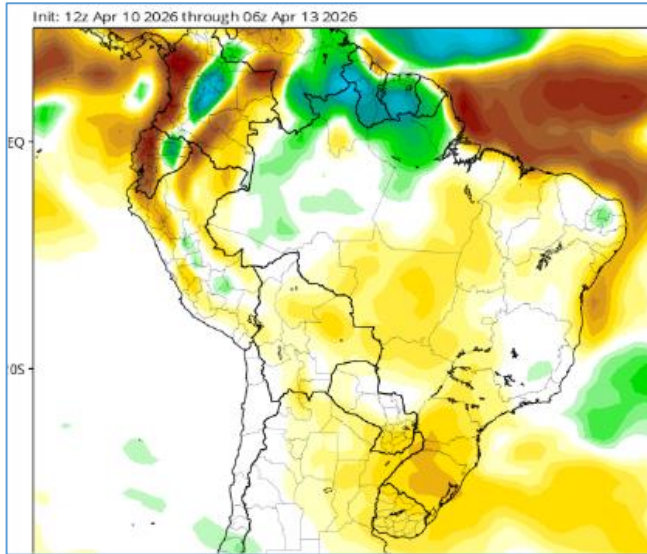
Modelo GEFS/NOAA

Tendência 3a e 4a semanas

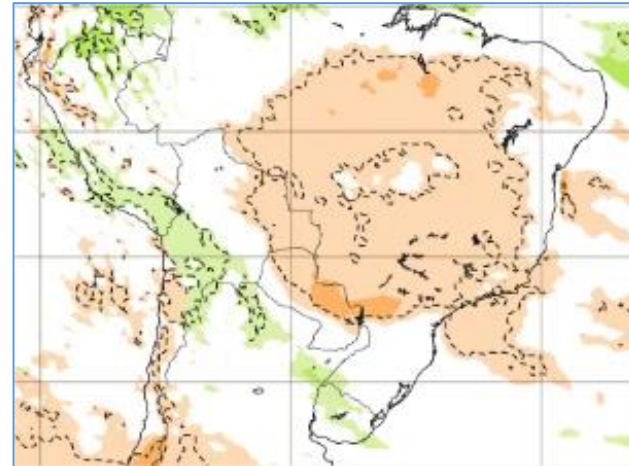
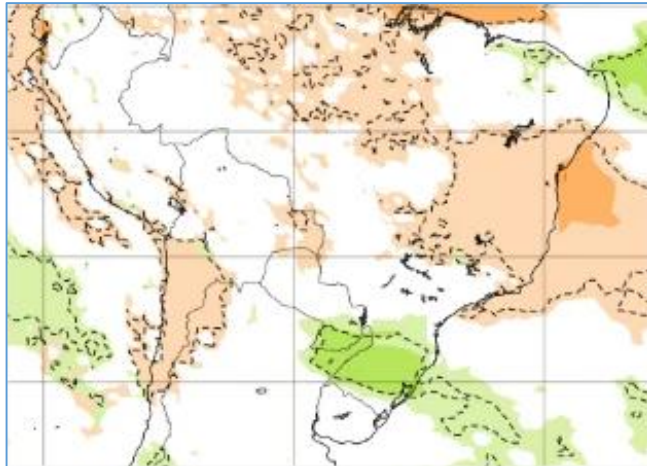
27 Abr- 04 Mai

04-11 Mai

CFS/NOAA



ECMWF



27 Abr- 04 Mai

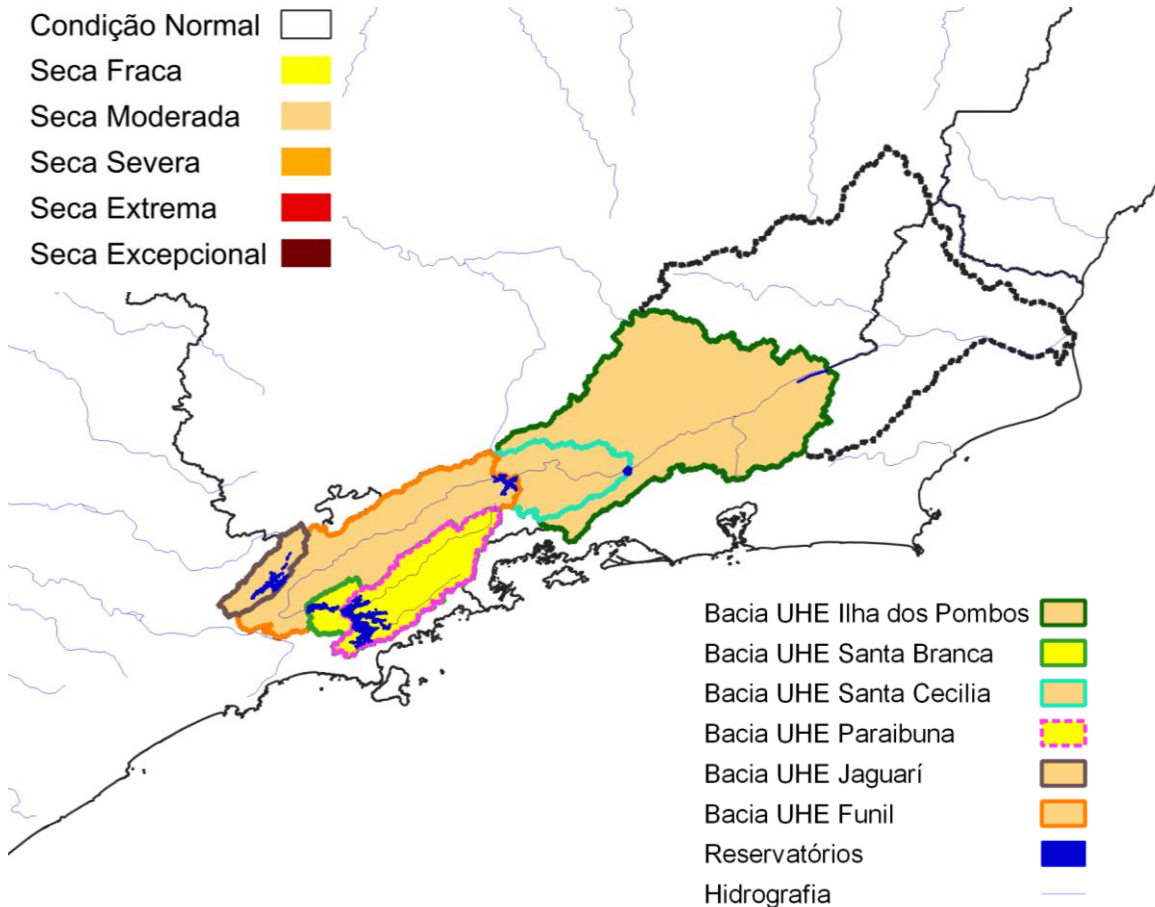
04-11 Mai



# Índice de Seca Bivariado (Chuva-Vazão) - TSI

(*Two-variate Standardized Index* – **Escala de 6 meses**)

## Previsão Próximos 30 dias



### Estabilidade da seca:

- Santa Branca (*Fraca*)
- Paraibuna (*Fraca*)
- Funil (*Moderada*)
- Santa Cecília (*Moderada*)

### Desintensificação da seca:

- Ilha dos Pombos (*Sev-> Mod.*)
- Jaguarí (*Sev. -> Mod.*)

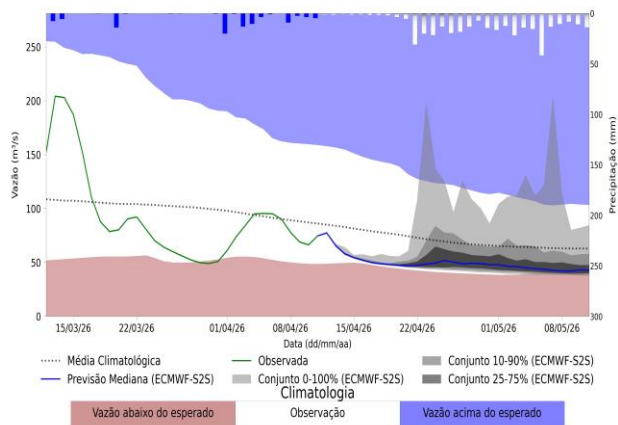
Fonte: CEMADEN/MCTI

Previsão de Precipitação: *Climate Forecast System (CFS)* e

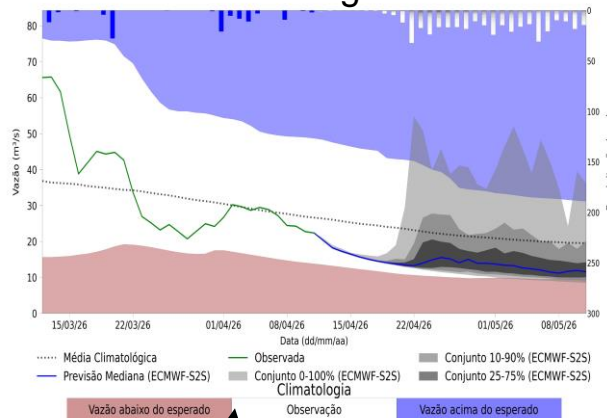
## Previsão de vazão natural na Bacia Rio Paraíba do Sul

**Previsão: 11/04/26 a 11/05/26**

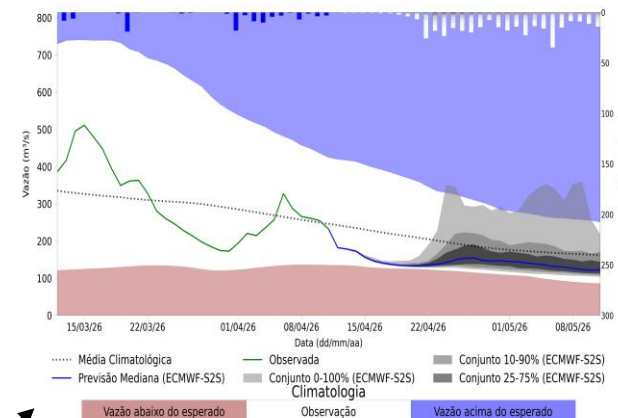
### UHE Santa Branca



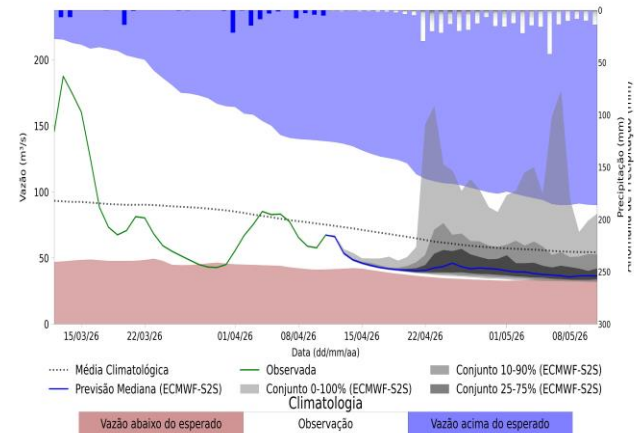
### UHE Jaguari



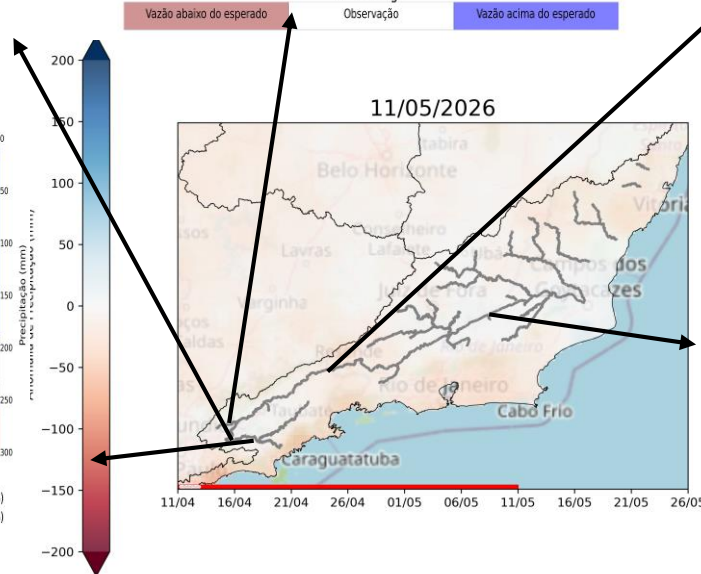
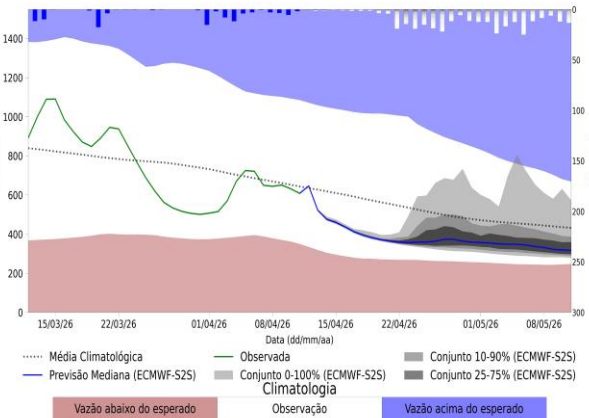
### UHE Funil



### UHE Paraibuna



### UHE Ilha dos Pombos

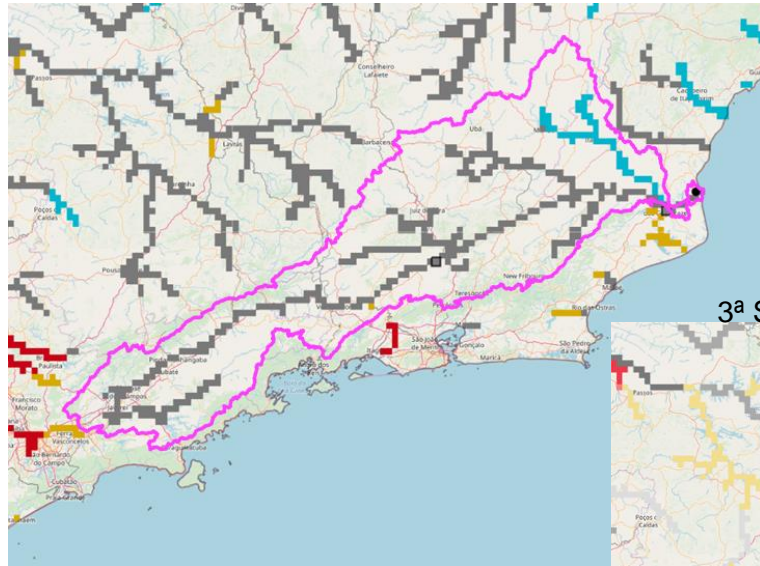


**Fonte: Meteorologia (INMET/MERGE); Vazão (ANA/ONS); MLT: 1993-2024; Previsão Meteorológica: ECMWF-S2S**

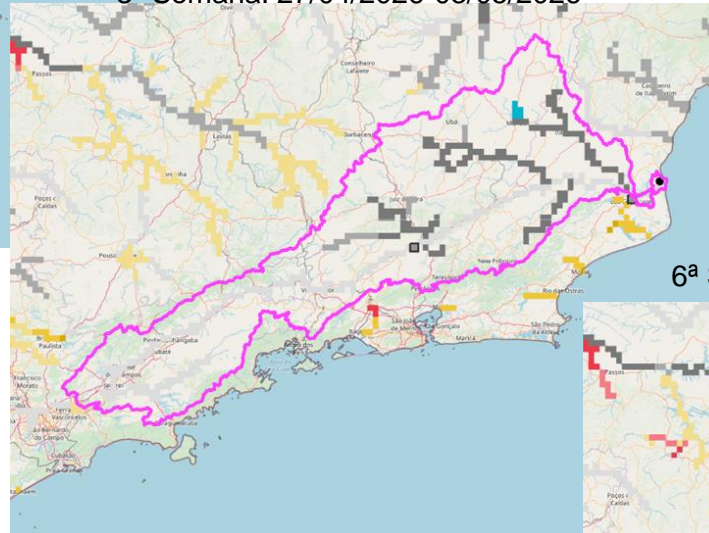
# Previsão Sub-sazonal (45 dias) de vazões naturais para a Bacia do Paraíba do Sul (GloFAS)

Previsão: 13/04/2026 – 25/05/2026

1ª Semana: 13/04/2026-19/04/2026



3ª Semana: 27/04/2026-03/05/2026



6ª Semana: 18/05/2026-25/05/2026



Categoria de anomalia de vazões (percentil)

Muito abaixo (1-10)

Abaixo (10-25)

Média (25-75)

Acima (75-90)

Muito acima (90-100)

Categoria de incerteza

Baixa (0-10) Média (10-20) Alta (<20)

Baixa (0-10) Média (10-20) Alta (<20)

Baixa (0-10) Média (10-20) Alta (<20)

Baixa (0-10) Média (10-20) Alta (<20)

Baixa (0-10) Média (10-20) Alta (<20)

Baixa (0-10) Média (10-20) Alta (<20)

Baixa (0-10) Média (10-20) Alta (<20)

Baixa (0-10) Média (10-20) Alta (<20)

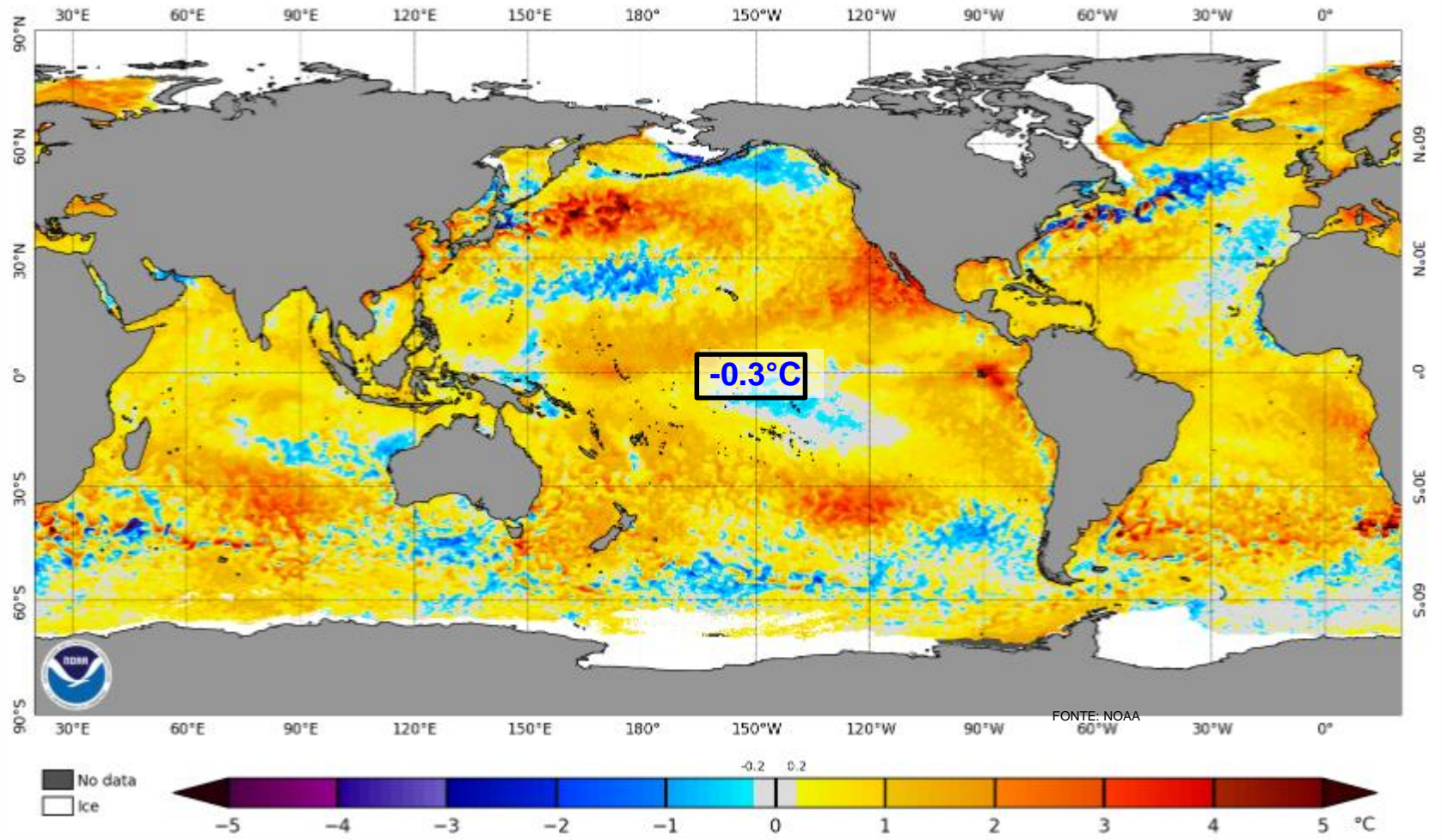
 Bacia do Paraíba do Sul



Fonte: Previsão Meteorológica: ECMWF  
Previsão de vazão: Lisflood/GloFAS Forecast  
<https://www.globalfloods.eu/glofas-forecasting/>

# Status Atual: Neutralidade / El Niño Watch

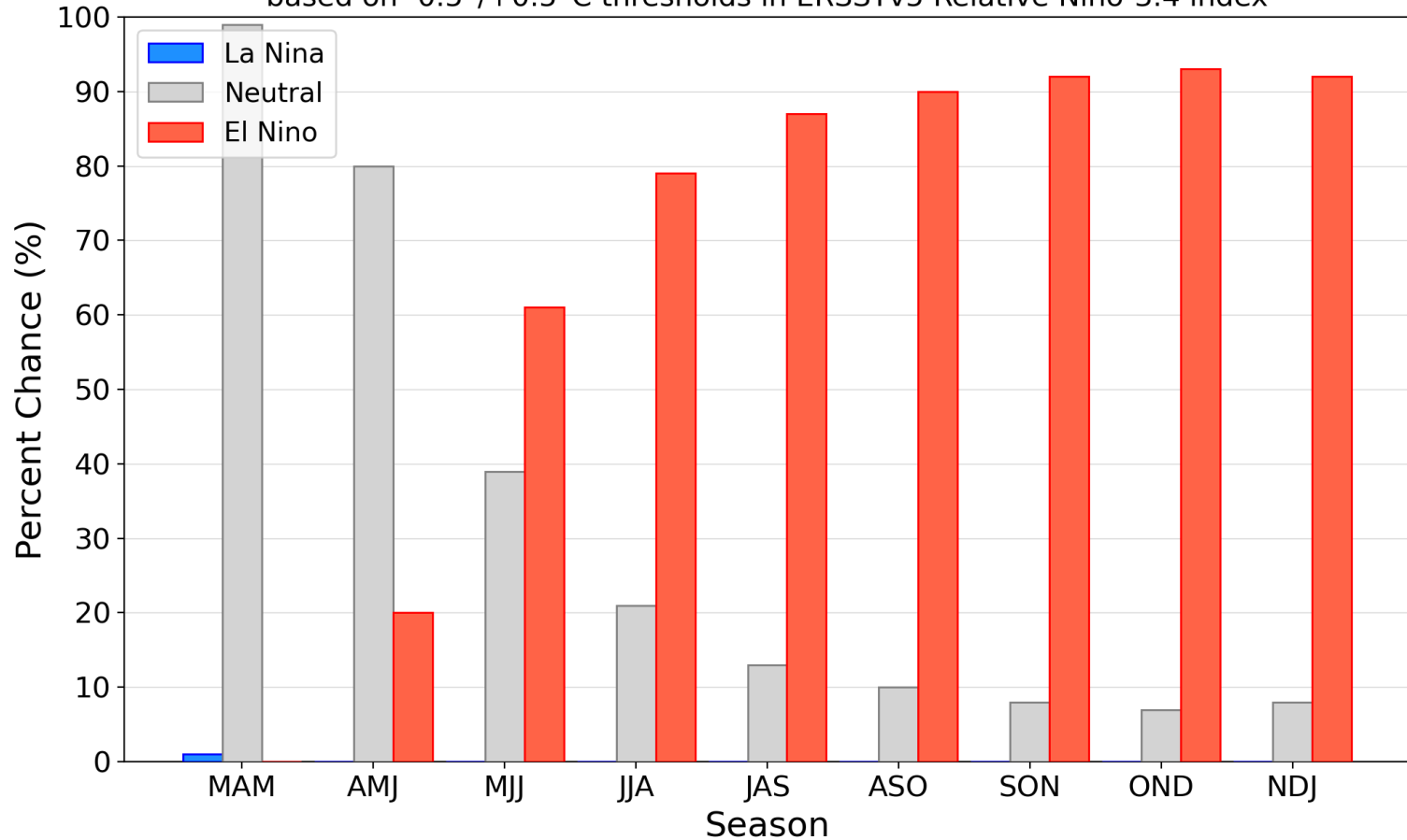
NOAA Coral Reef Watch Daily 5km SST Anomalies (v3.1) 12 Apr 2026



# Previsão do “ENSO”

## Official NOAA CPC ENSO Probabilities (issued April 2026)

based on  $-0.5^{\circ}/+0.5^{\circ}\text{C}$  thresholds in ERSSTv5 Relative Niño-3.4 index

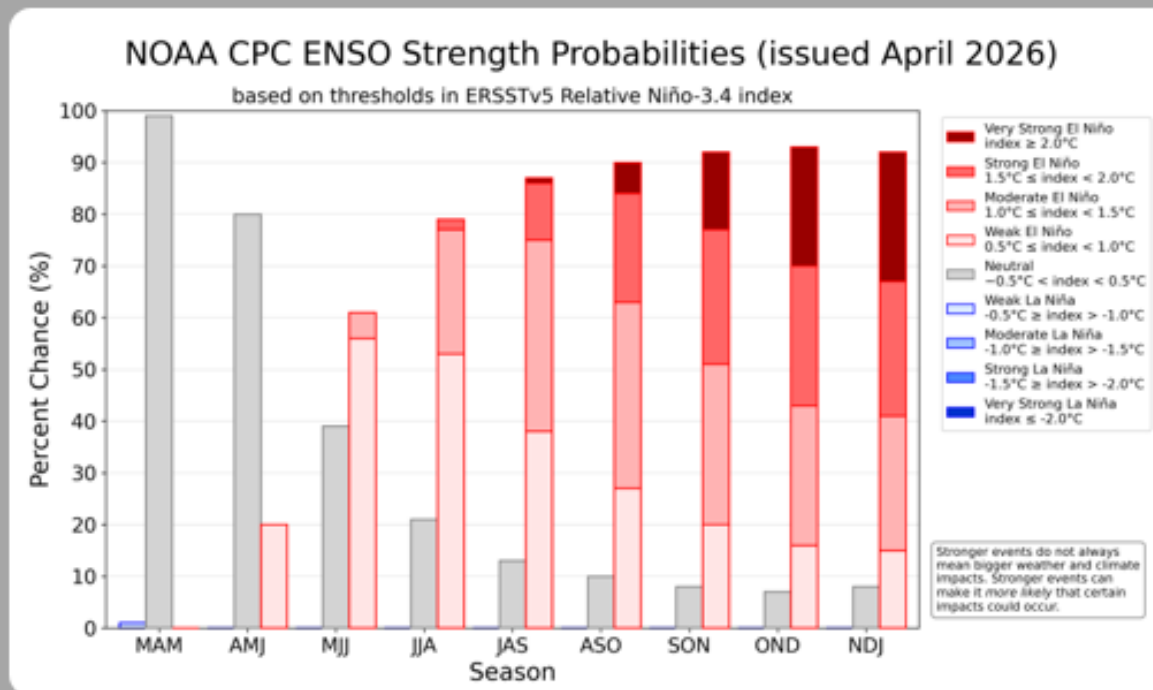


# Previsão do “ENSO”

## CPC Probabilistic ENSO Strength Outlook

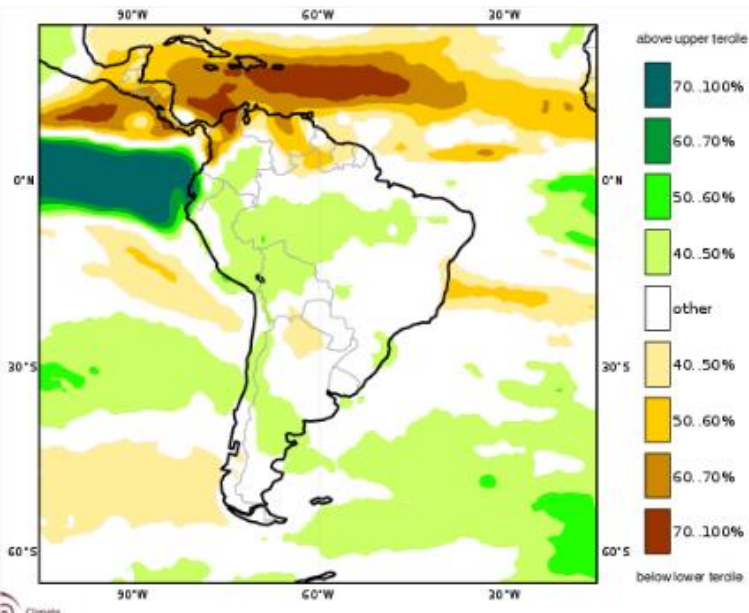
Updated: 9 April 2026

In November 2026- January 2027, there are nearly equal chances (25%) of a very strong, strong, or moderate strength El Niño. There is nearly a 1-in-10 chance of ENSO-neutral.

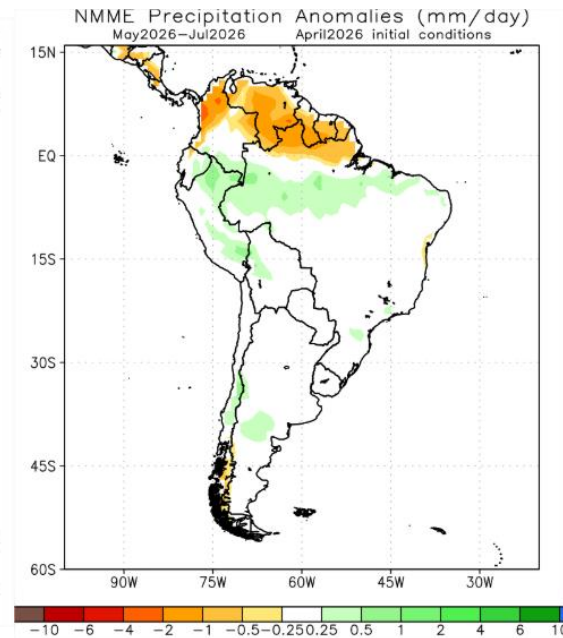


# Previsão Sazonal de Chuva Multi-Modelo

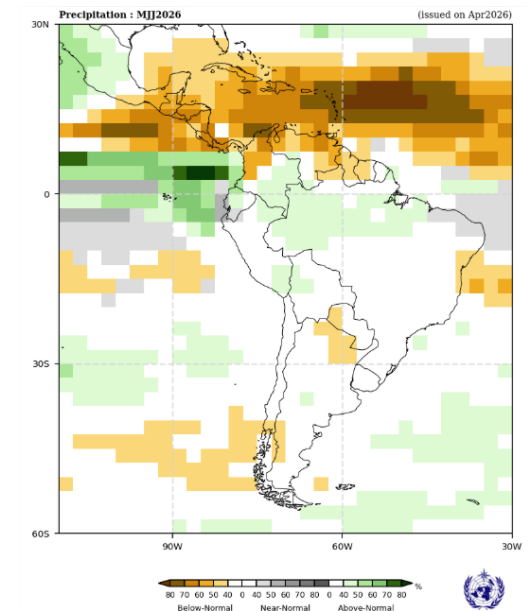
## Maio-Junho-Julho



Modelos “Europeus”



Modelos Norte Americanos



Modelos da WMO