



CEMADEN

**Centro Nacional de Monitoramento e
Alertas de Desastres Naturais**

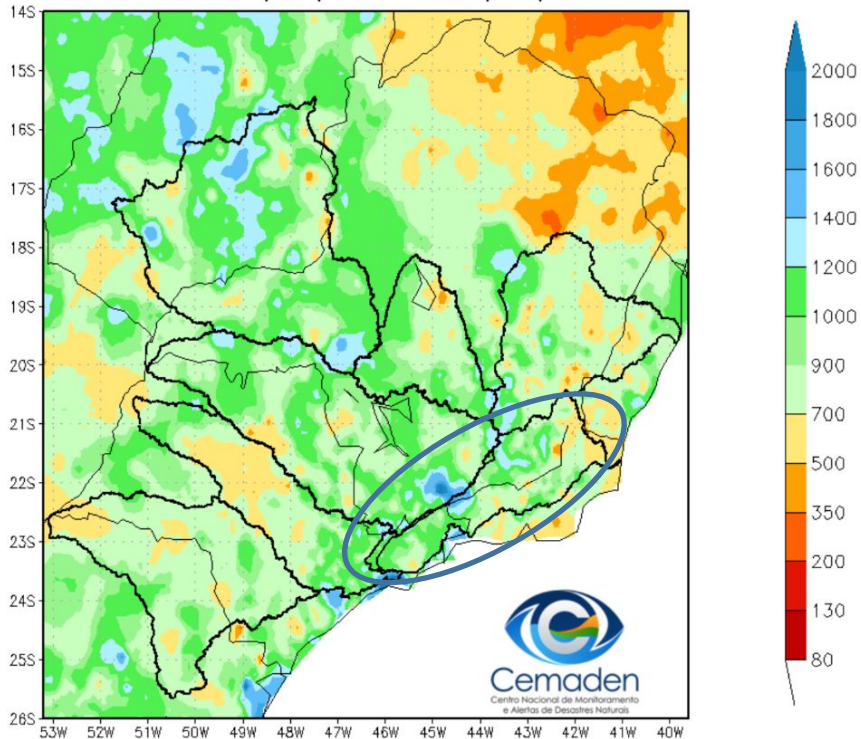
Monitoramento e Previsões de Chuva para a Bacia do Rio Paraíba do Sul

13 de Maio de 2025

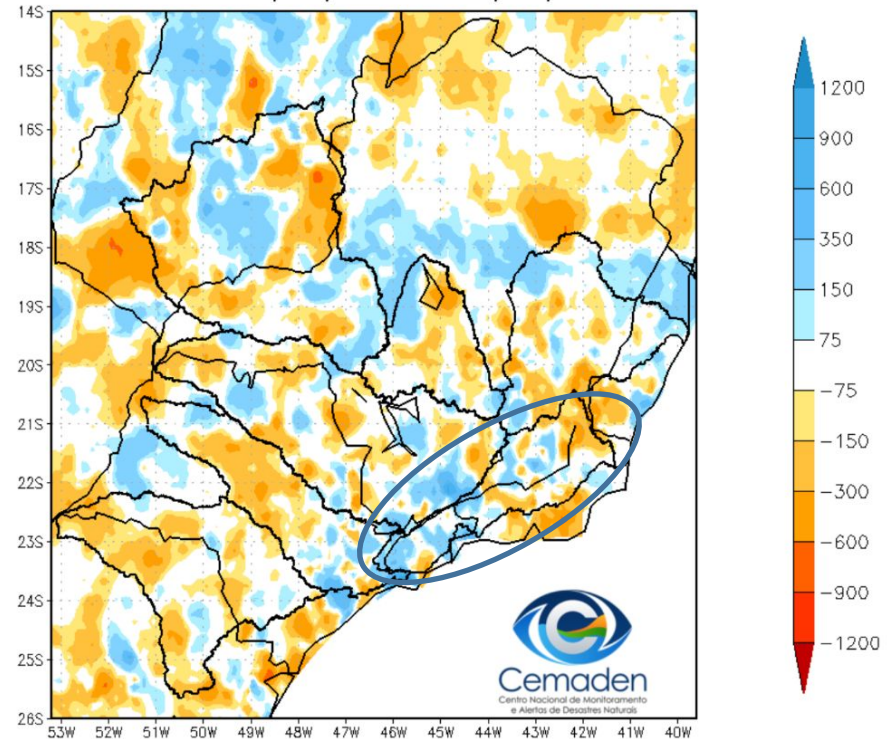


Precipitação acumulada no ano hidrológico

Precipitação Acumulada (mm) A.S.
Período: 01/10/2024 a 12/05/2025

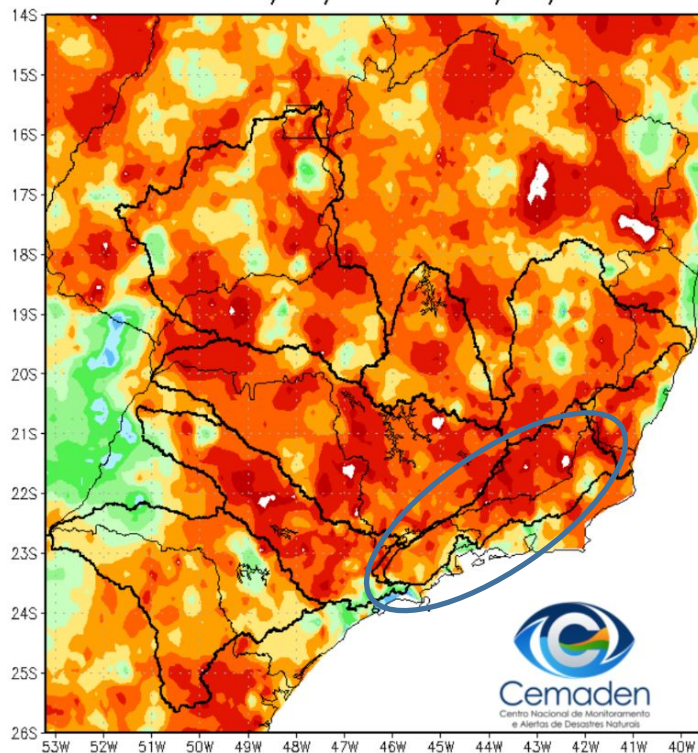


Anomalia de Precipitação (mm) A.S.
Período: 01/10/2024 a 12/05/2025

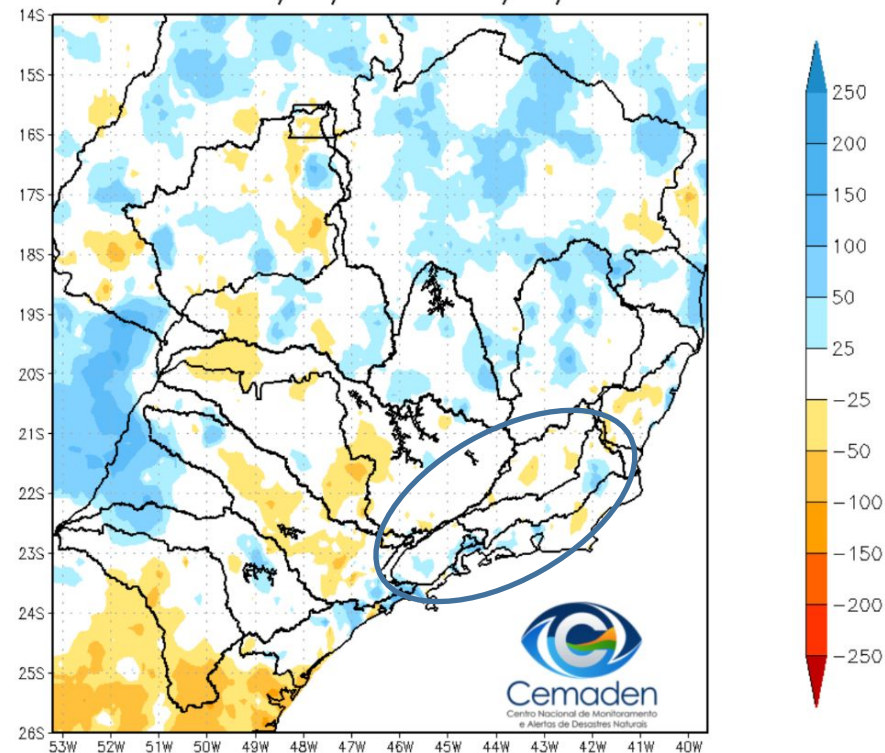


Precipitação acumulada nos últimos 30 dias

Precipitação Acumulada (mm) A.S.
Período: 12/04/2025 a 12/05/2025

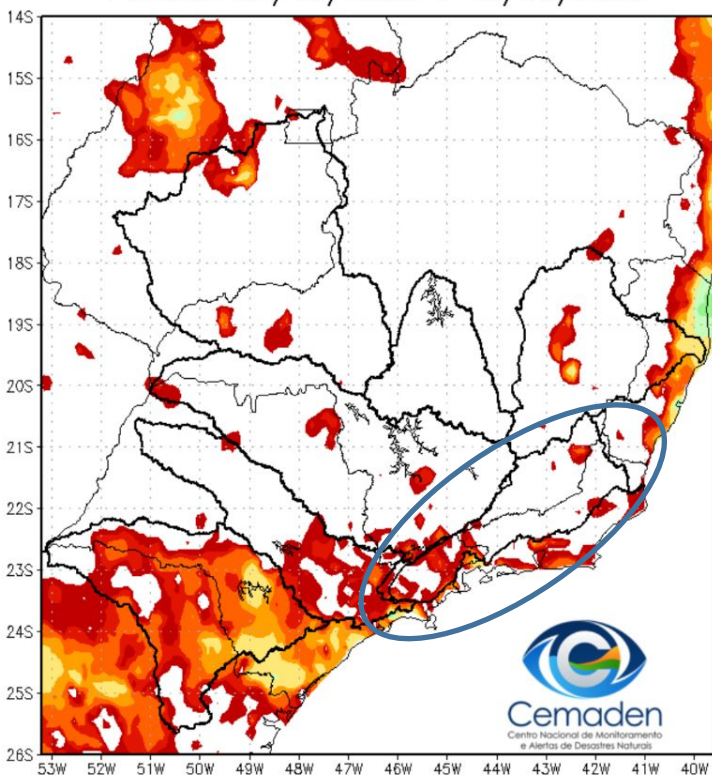


Anomalia de Precipitação (mm) A.S.
Período: 12/04/2025 a 12/05/2025

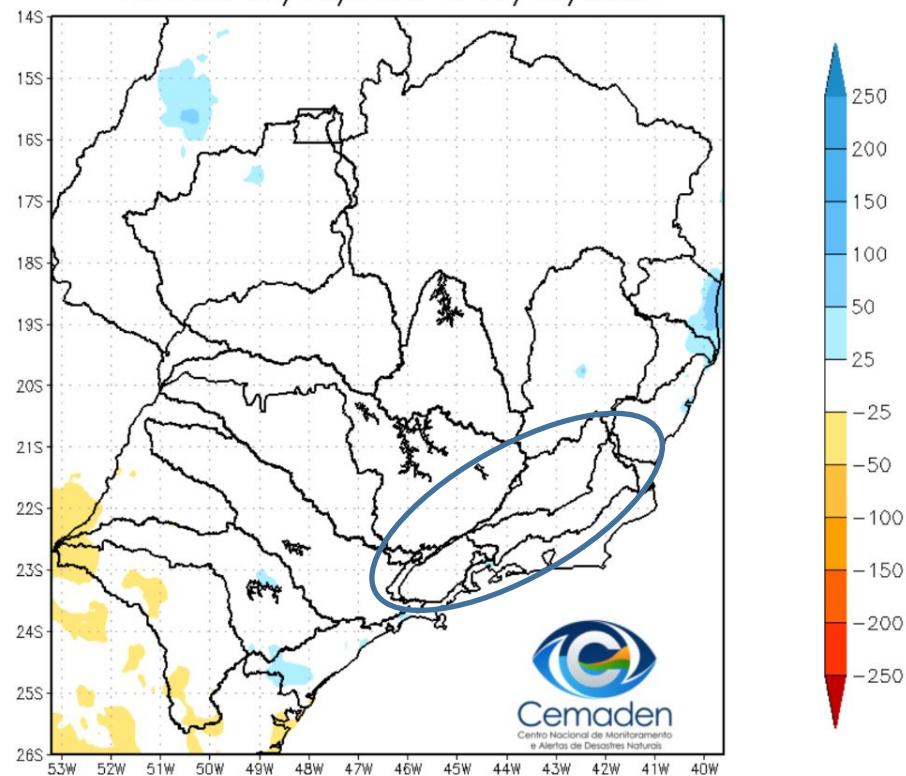


Precipitação acumulada nos últimos 10 dias

Precipitação Acumulada (mm) A.S.
Período: 02/05/2025 a 12/05/2025

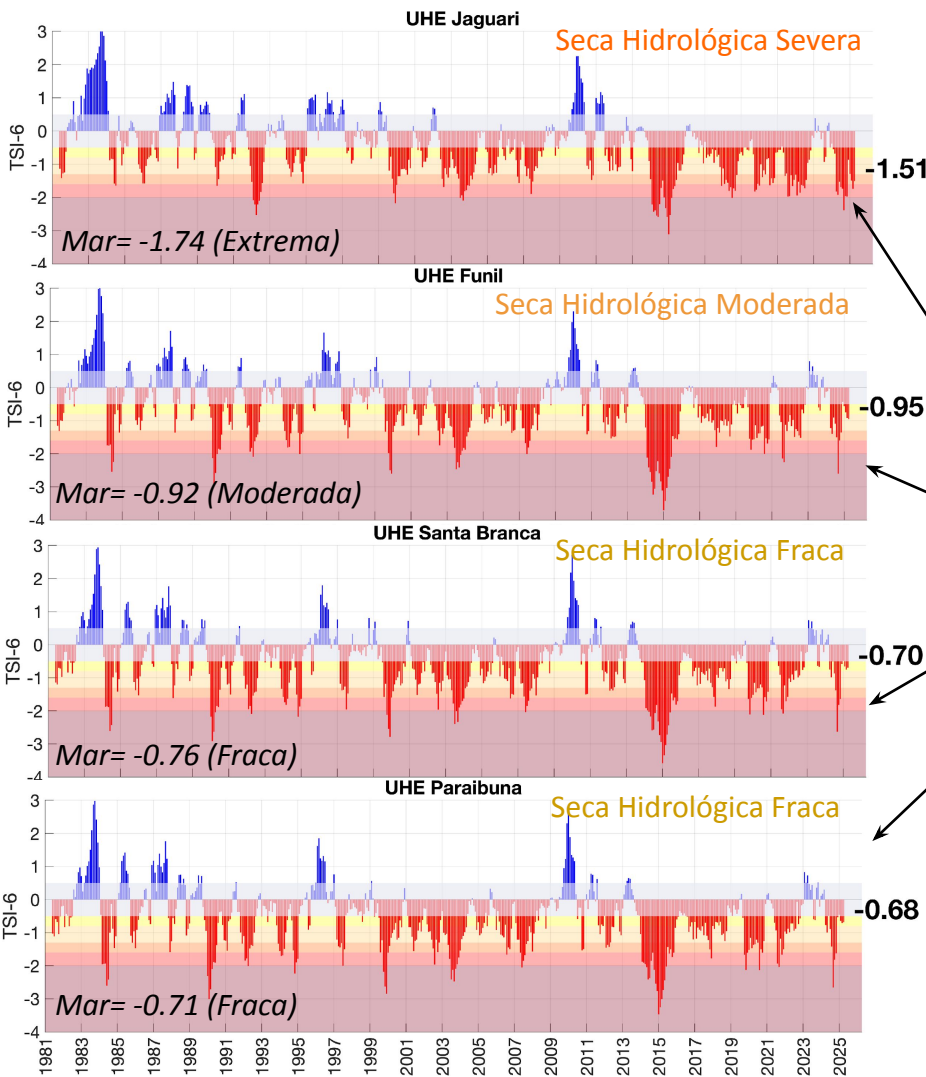


Anomalia de Precipitação (mm) A.S.
Período: 02/05/2025 a 12/05/2025









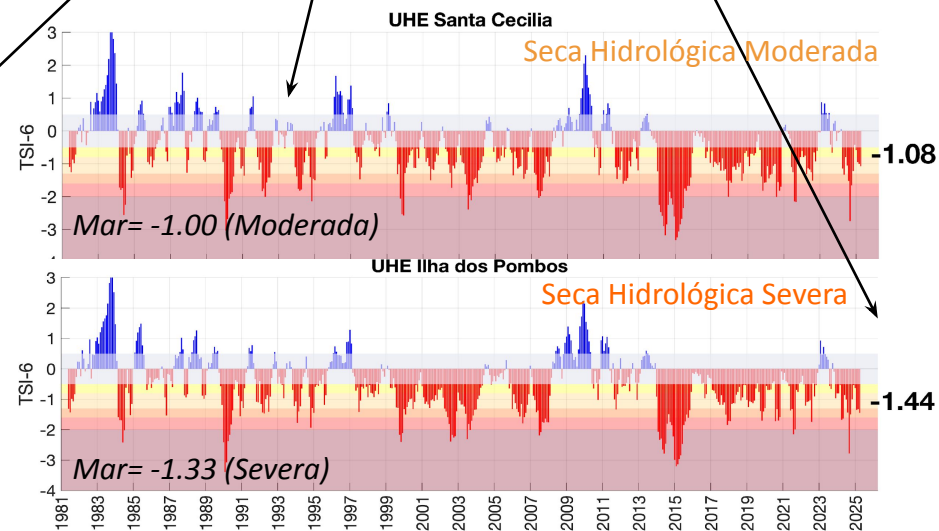
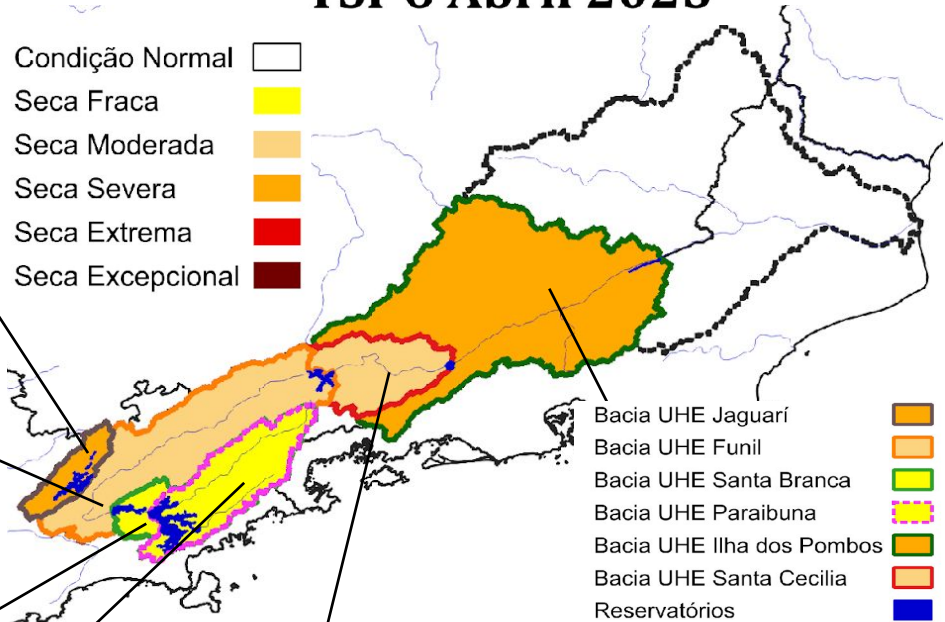
Índice de Seca Bivariado (Chuva-Vazão) - TSI

(Two-variate Standardized Index – Escala de 6 meses)



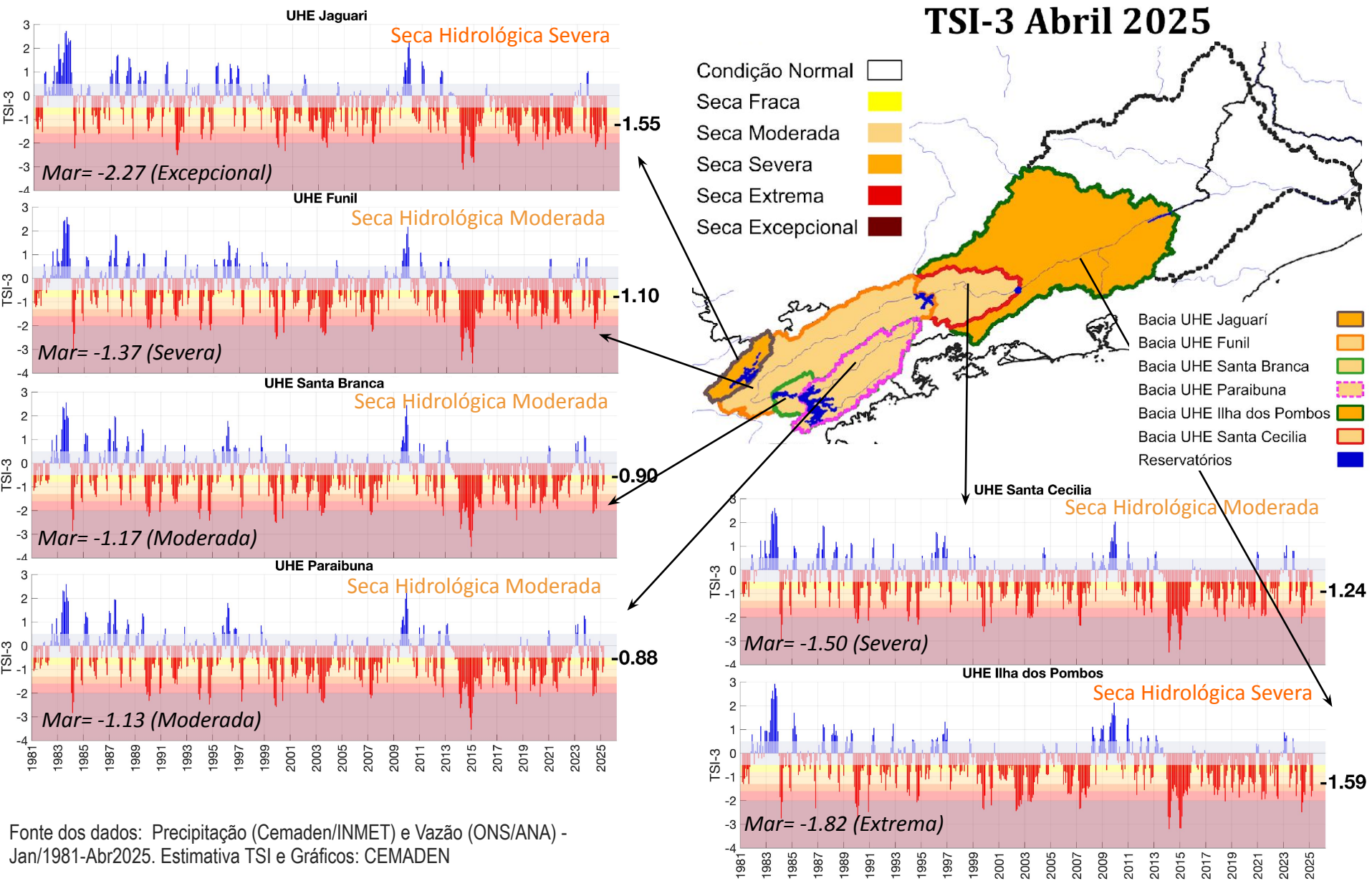
TSI-6 Abril 2025

Condição Normal 
 Seca Fraca 
 Seca Moderada 
 Seca Severa 
 Seca Extrema 
 Seca Excepcional 

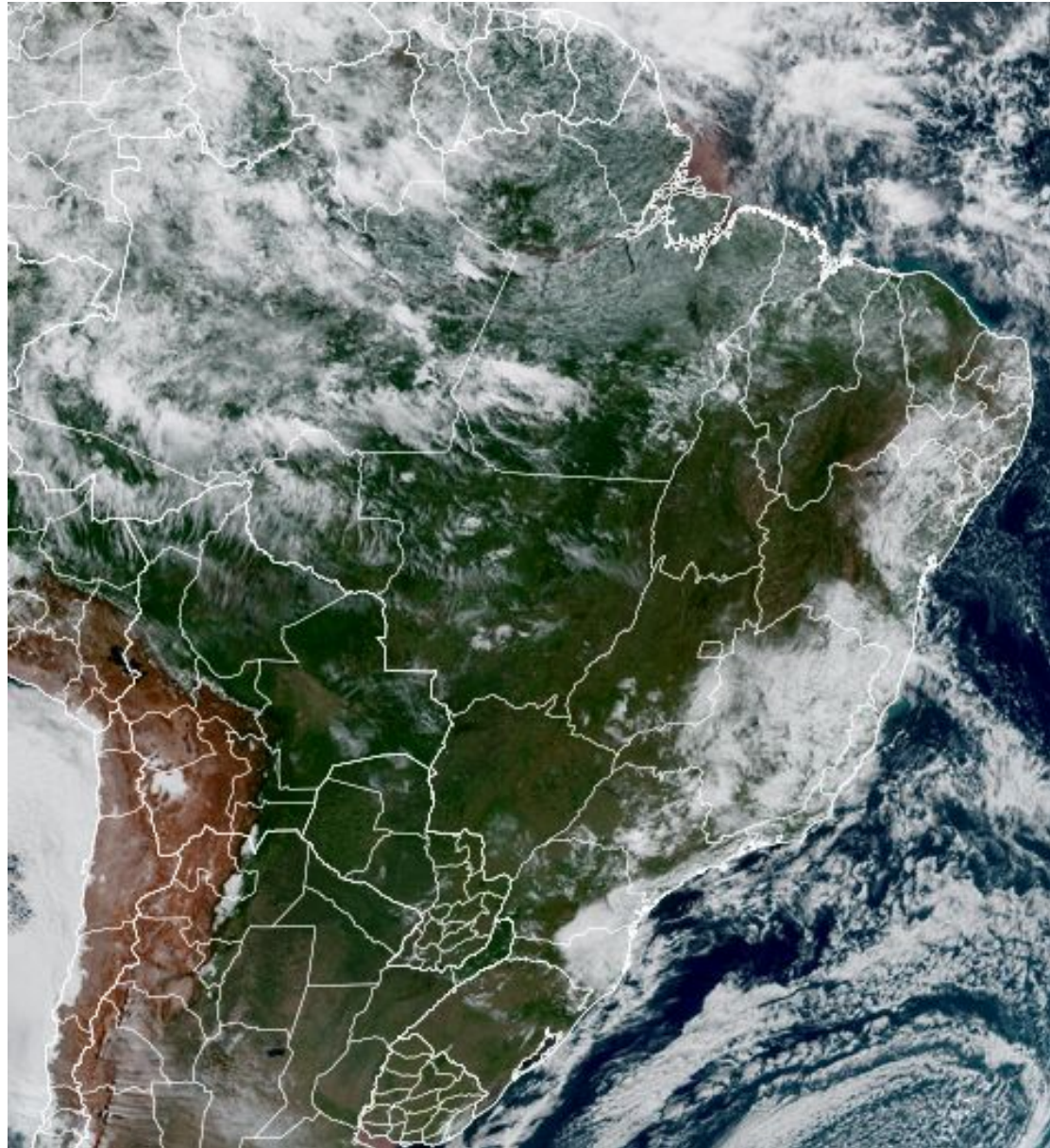


Índice de Seca Bivariado (Chuva-Vazão) - TSI

(Two-variate Standardized Index – Escala de 3 meses)



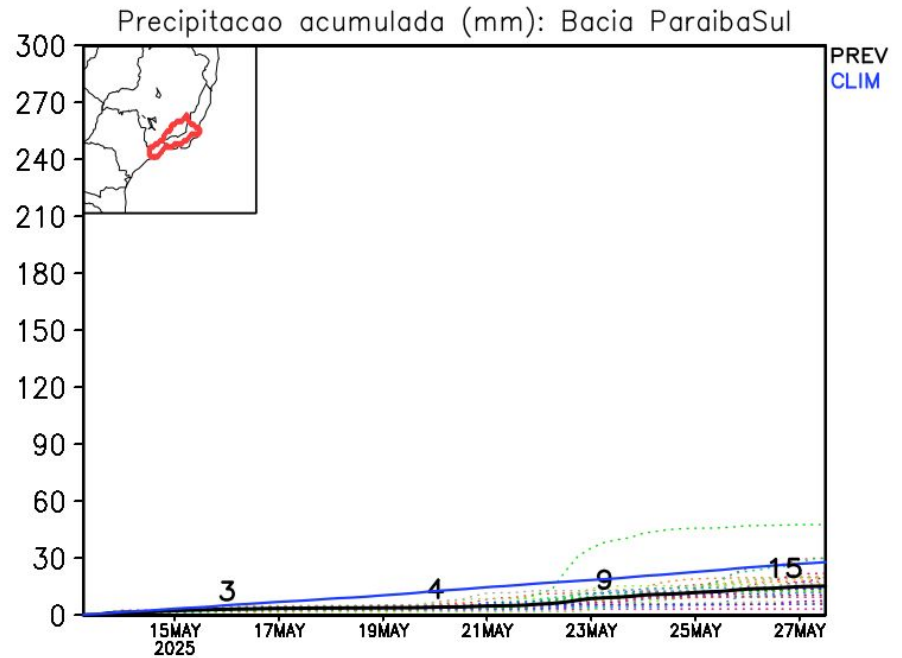
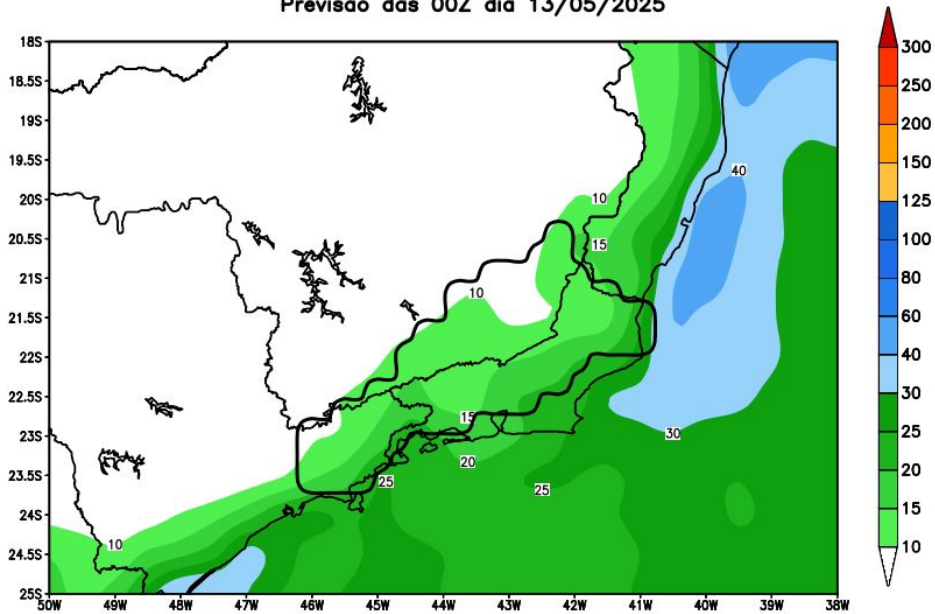
Situação meteorológica atual



Rio Paraíba do Sul

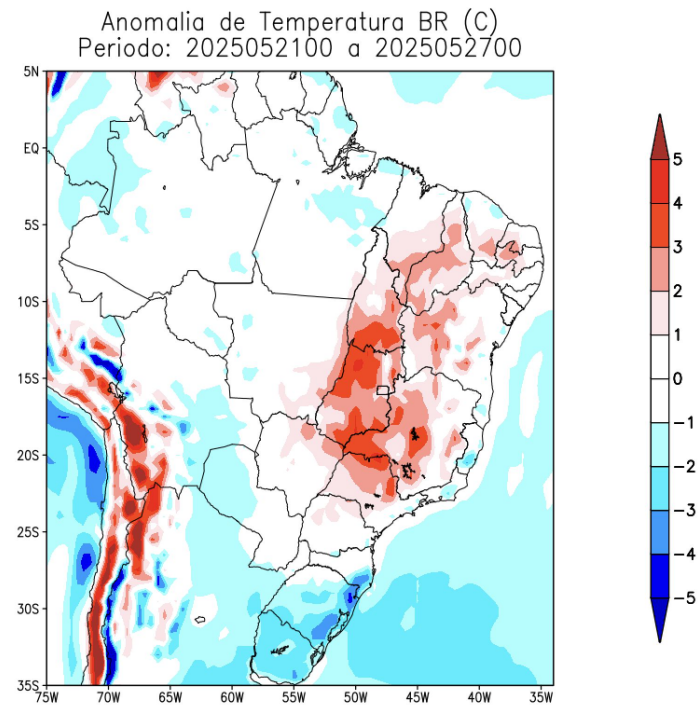
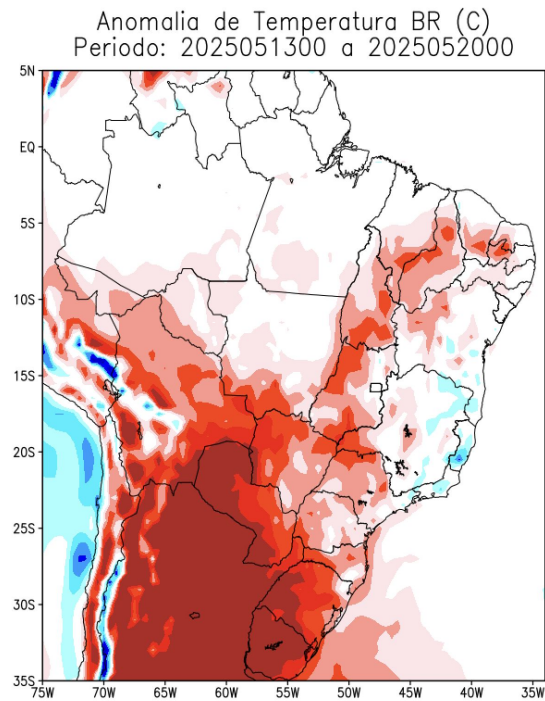
previsão de chuva em 14 dias

GEFS / Bacia do Rio Paraíba do Sul
Precipitação acumulada em 14 dias (mm)
Previsão das 00Z dia 13/05/2025



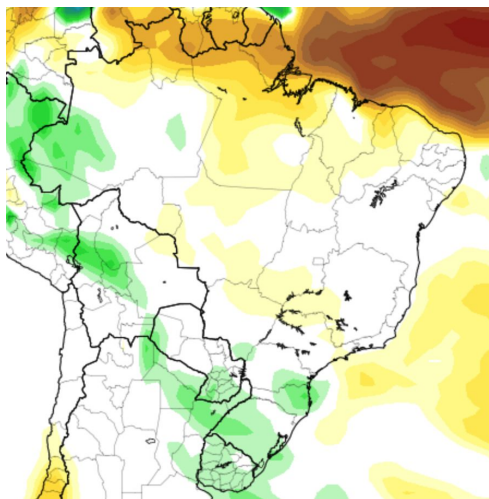
Modelo GEFS/NOAA

Previsão de Temperatura para as próximas duas semanas



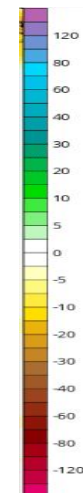
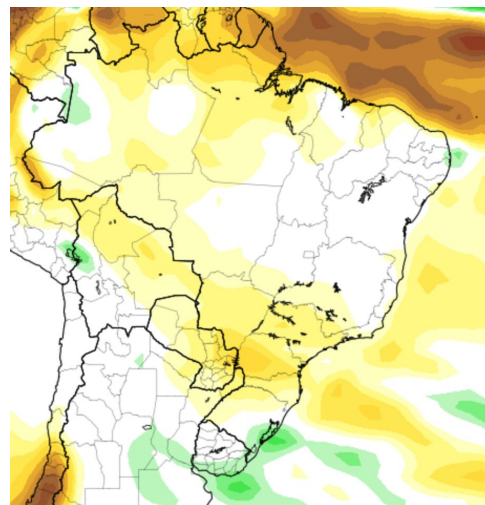
Anomalia de Chuva 3a e 4a semanas

26 - 01 Junho

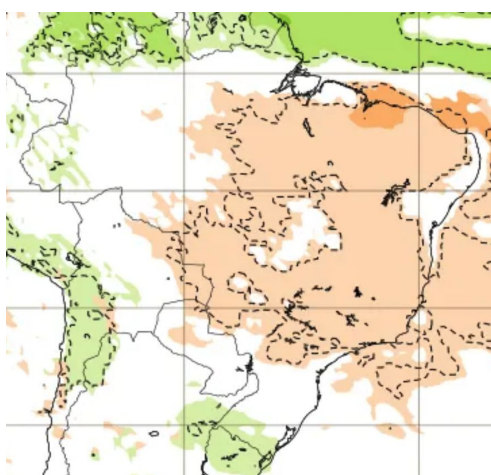


Modelo
Americano
CFS/NOAA

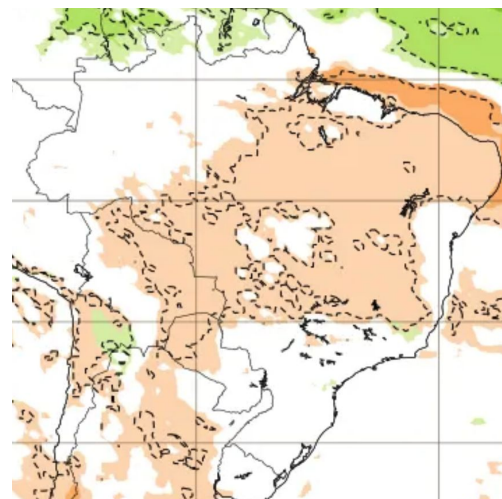
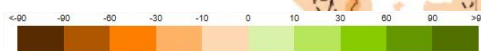
02-08 Junho



Modelo Europeu
ECMWF



26 - 01 Junho

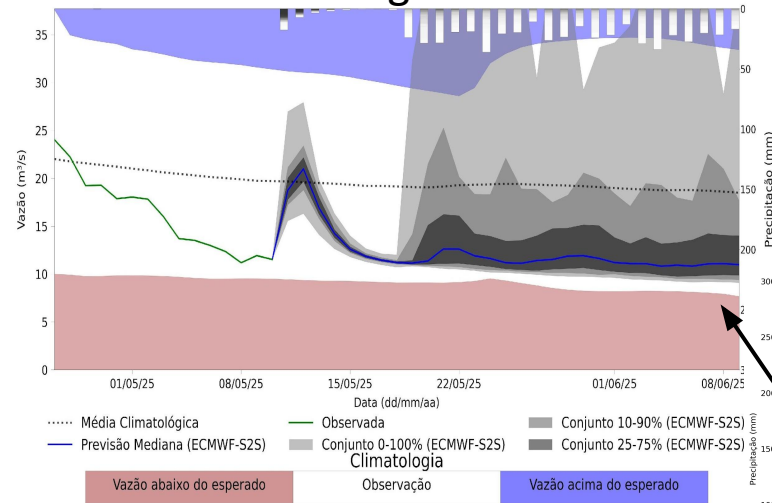


02-08 Junho

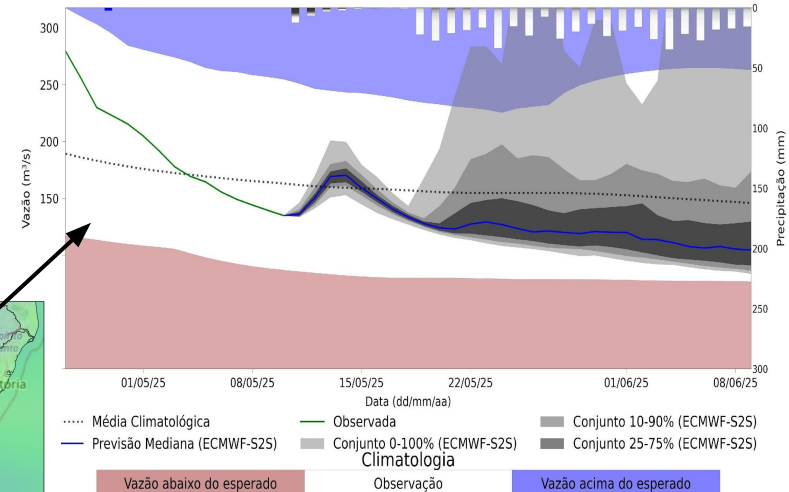
Previsão de vazão natural na Bacia Rio Paraíba do Sul 30 dias (Modelo hidrológico MHD)

Previsão: 10/05/2025 a 09/06/2025

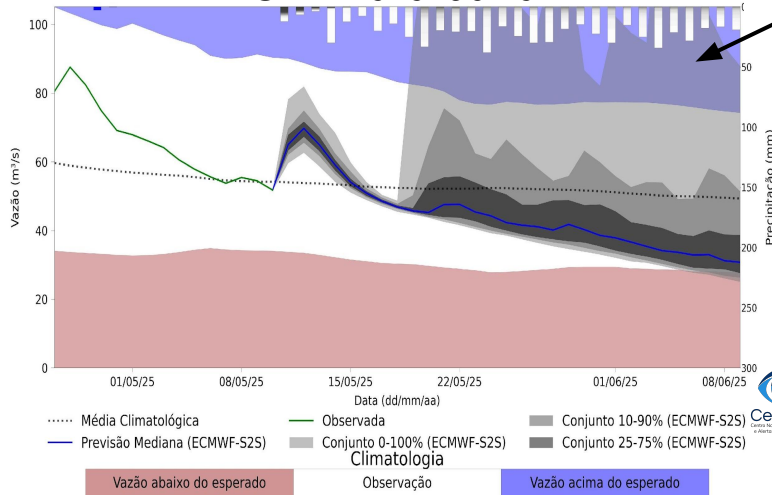
UHE Jaguari



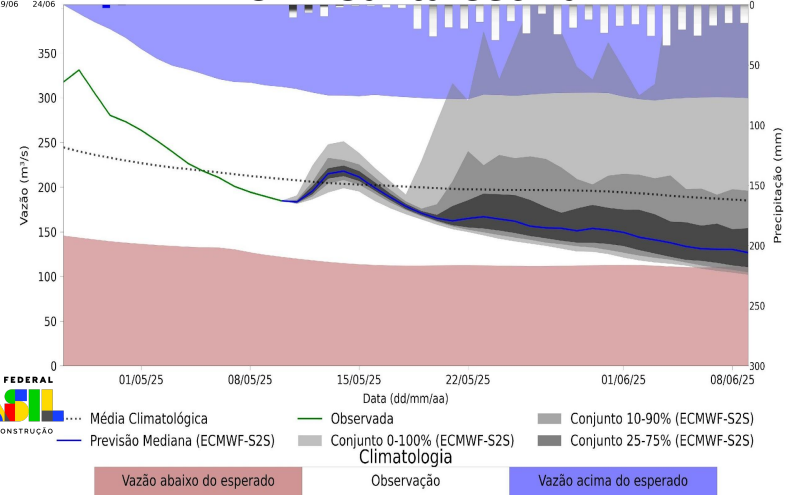
UHE Funil



UHE Paraibuna



UHE Santa Cecília



Fonte: Meteorologia
(INMET/MERGE);
Vazão (ANA/ONS)
MLT: 1993-2024
Previsão Meteorológica:
ECMWF-S2S



MINISTÉRIO DA
CIÊNCIA, TECNOLOGIA
E INOVAÇÃO

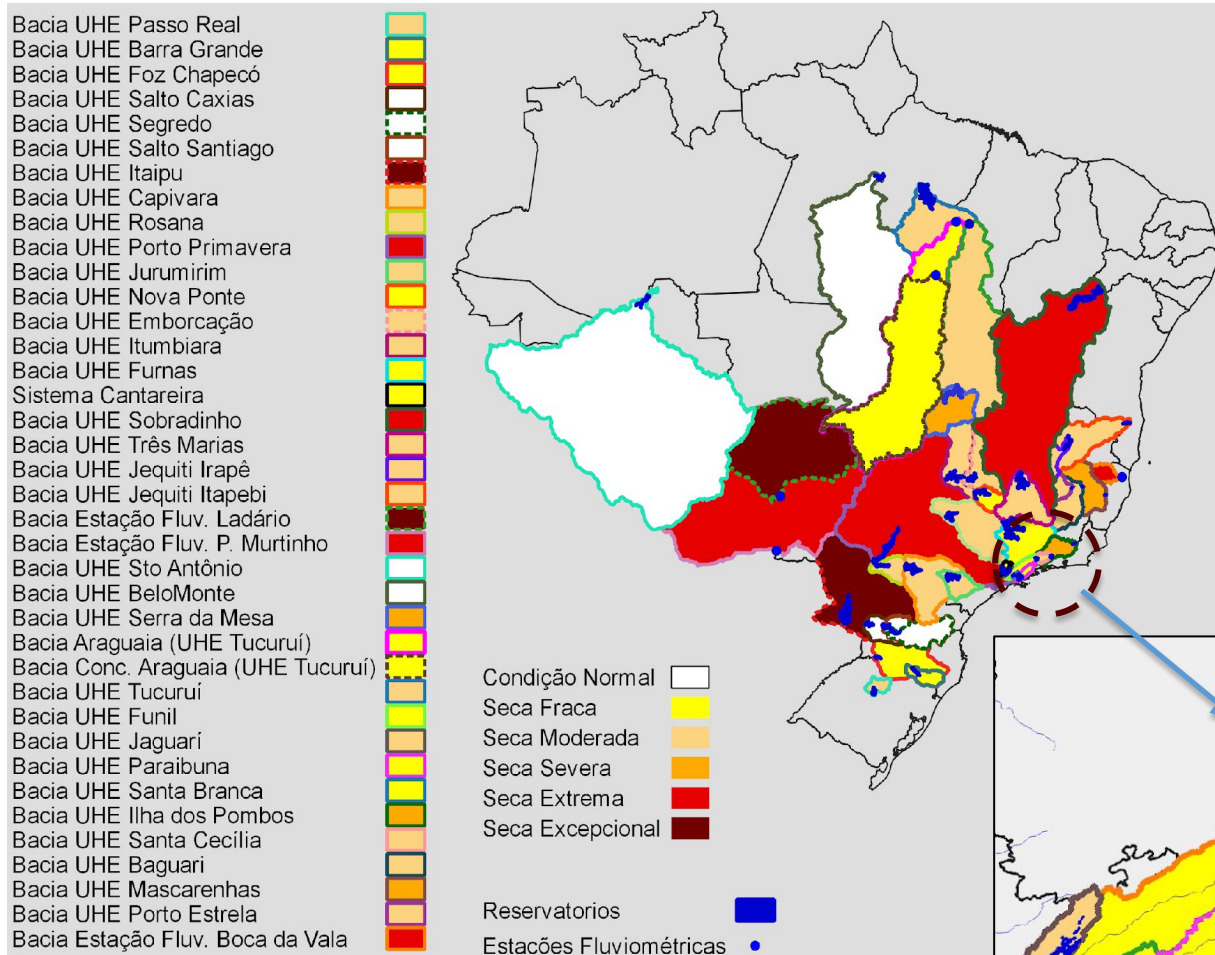


UNião e Reconstrução

Índice de Seca Bivariado (Chuva-Vazão) - TSI

(Two-variate Standardized Index – Escala de 6 meses)

Previsão Próximos 30 dias

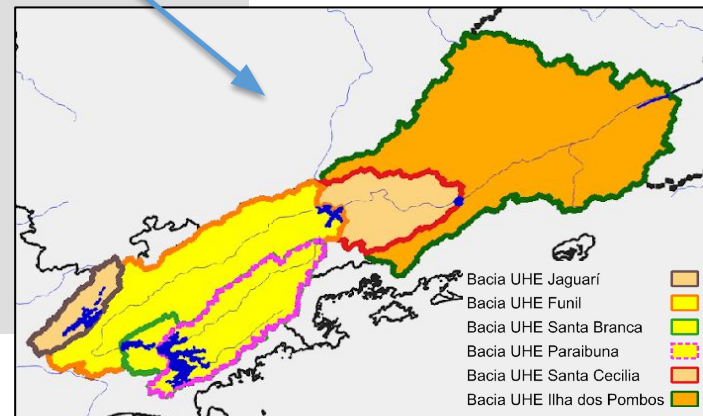


Estabilidade da seca:

- Santa Branca (*Fraca*)
- Paraibuna (*Fraca*)
- Santa Cecília (*Mod.*)
- Ilha dos Pombos (*Severa*)

Desintensificação da seca:

- Jaguarí (*Severa-> Mod.*)
- Funil (*Mod.-> Fraca*)

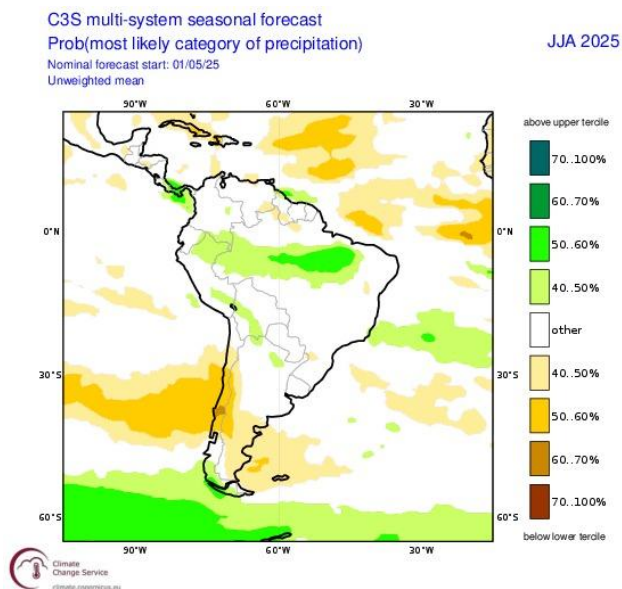


Fonte: CEMADEN/MCTI

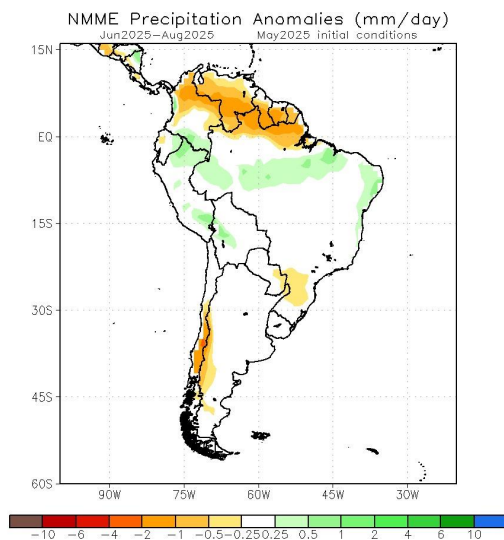
Previsão de Precipitação: *Climate Forecast System (CFS)*

Previsão Sazonal de Chuva Multi-Modelo

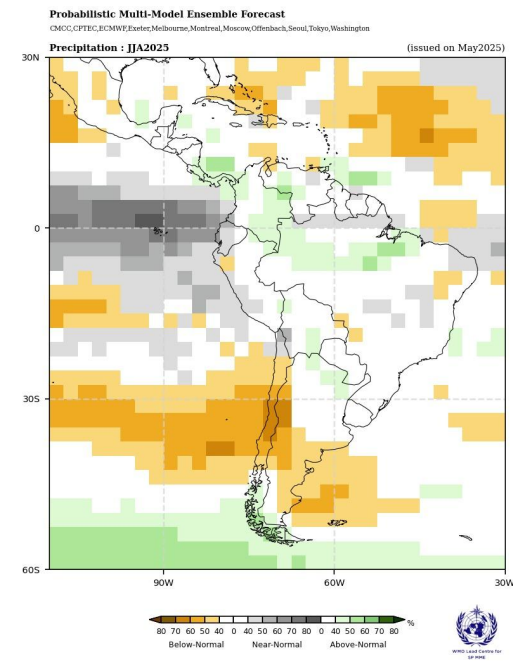
Junho-Julho-Agosto



Modelos Europeus



Modelos Norte Americanos



Modelos da WMO