



CEMADEN

**Centro Nacional de Monitoramento e
Alertas de Desastres Naturais**

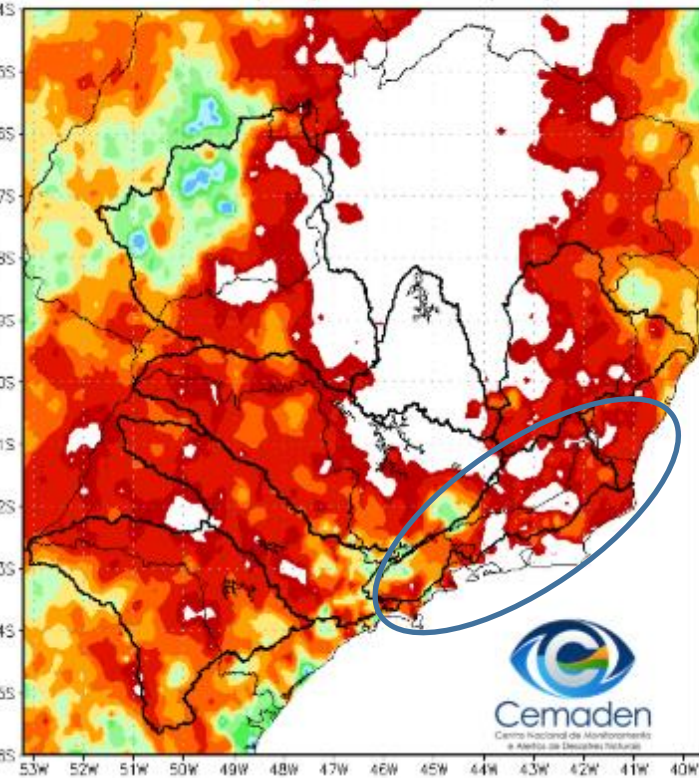
Monitoramento e Previsões de Chuva para a Bacia do Rio Paraíba do Sul

12 de Março de 2025

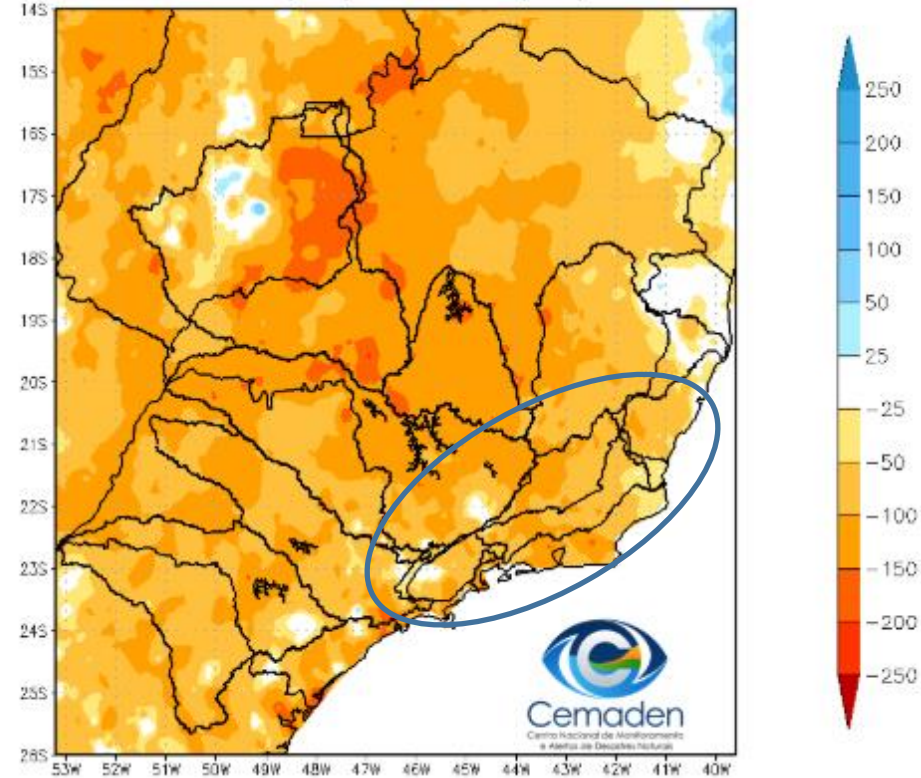


Precipitação acumulada nos últimos 30 dias

Precipitação Acumulada (mm) A.S.
Período: 09/02/2025 a 11/03/2025

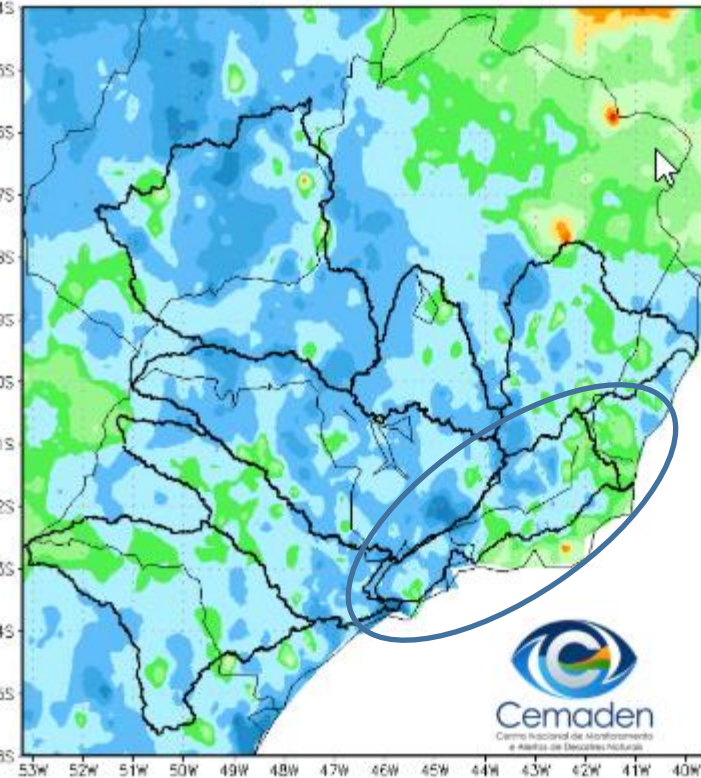


Anomalia de Precipitação (mm) A.S.
Período: 09/02/2025 a 11/03/2025

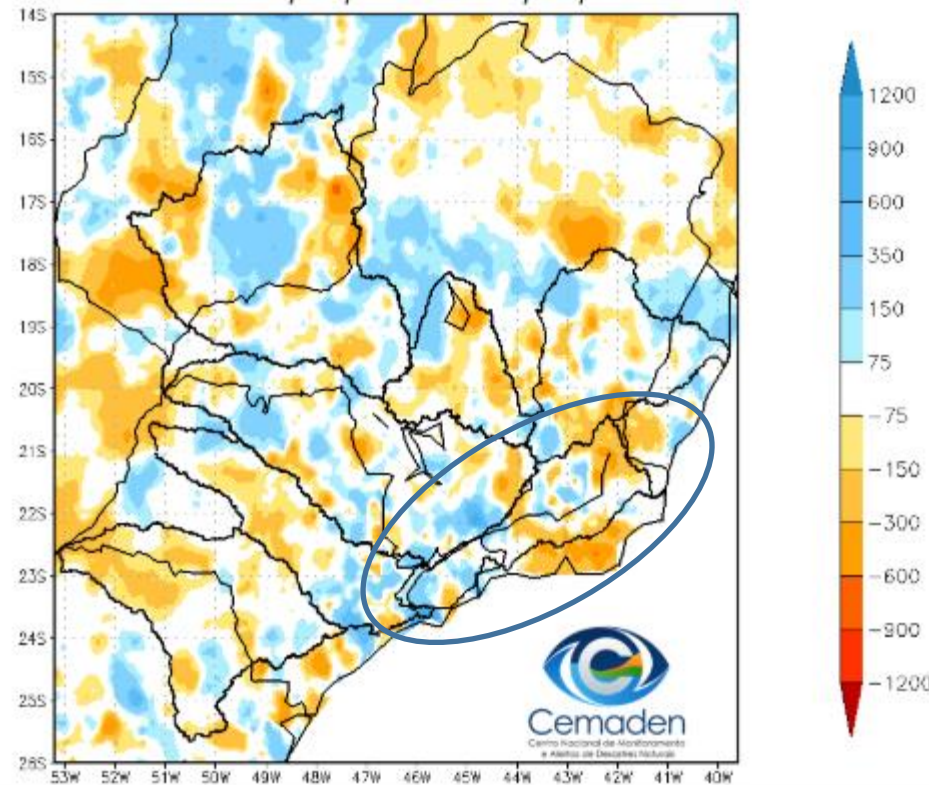


Precipitação acumulada no ano hidrológico

Precipitação Acumulada (mm) A.S.
Período: 01/10/2024 a 11/03/2025



Anomalia de Precipitação (mm) A.S.
Período: 01/10/2024 a 11/03/2025

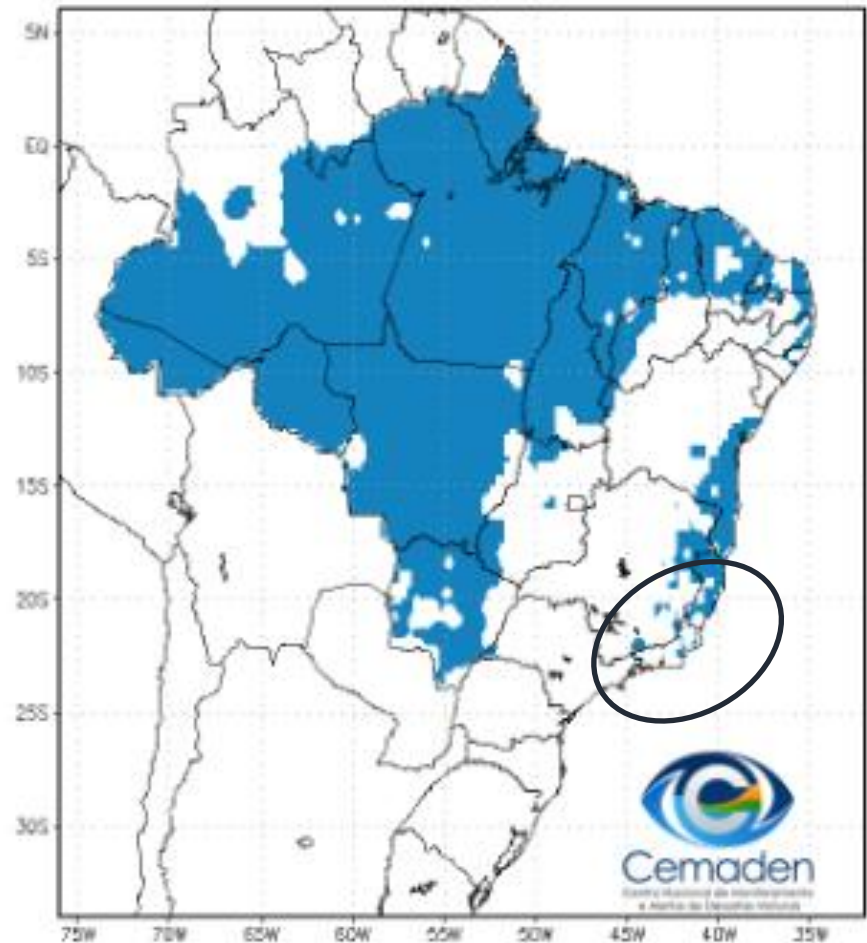


Situação da Estação Chuvosa

Climatologia da Precipitação (1999–2024)
Inferior 2 mm/dia por 4 de 5 dias Período: 11/03

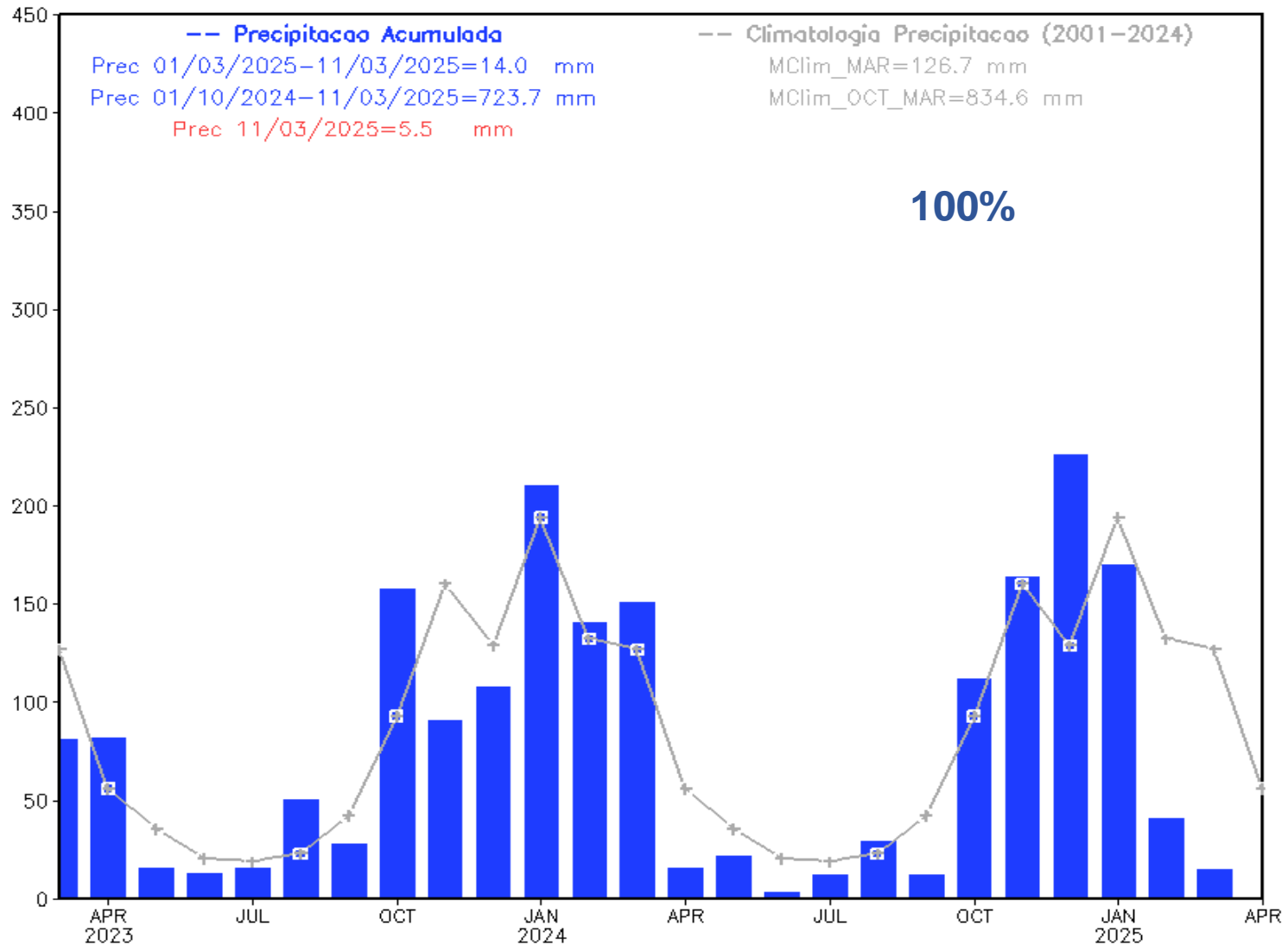


Precipitação Inferior 2 mm/dia por 4 de 5 dias
Período: 11/03/2025



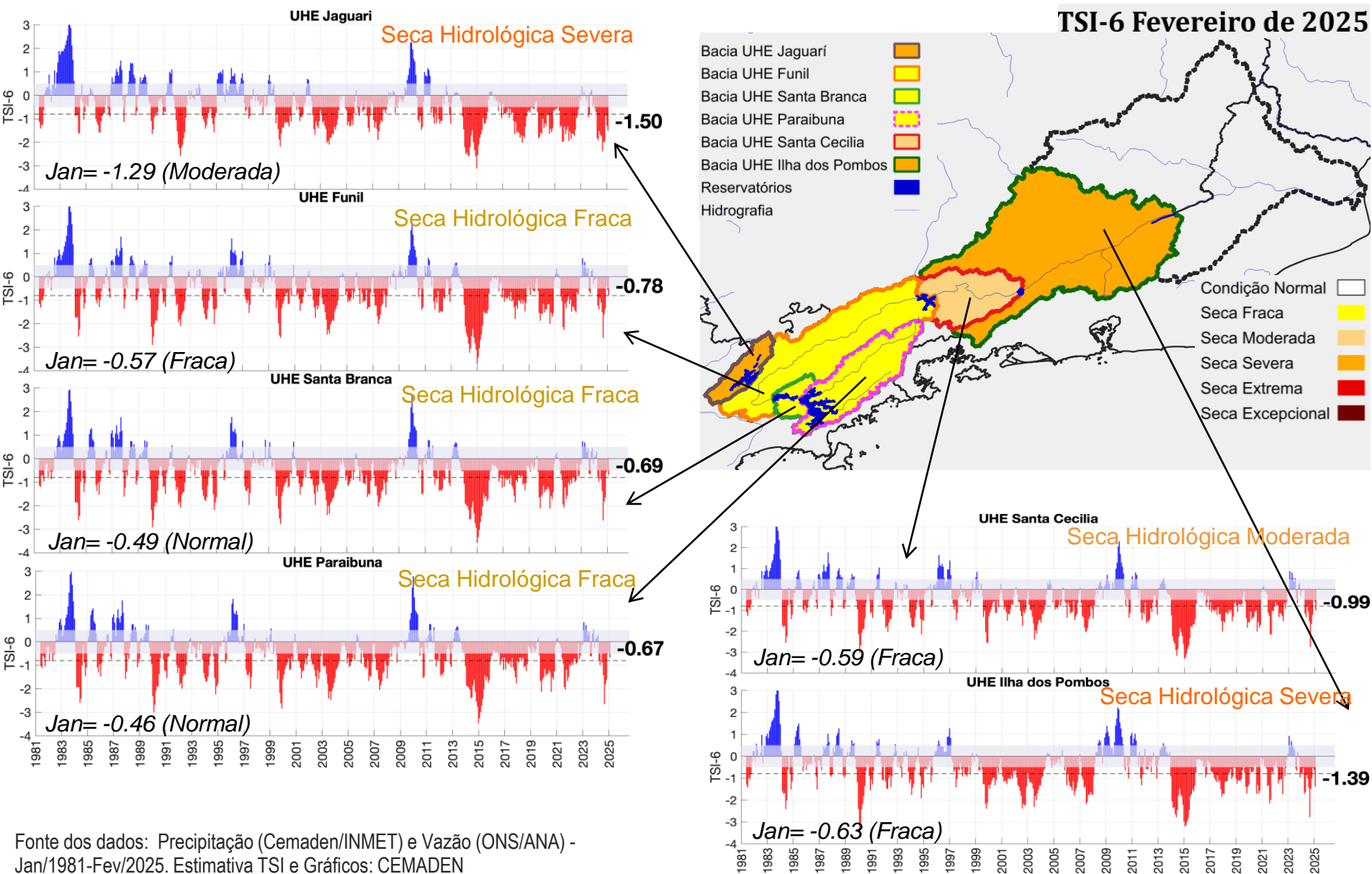
Precipitação nos últimos 2 anos

Precipitacao Bacia do Rio Paraiba_Sul desde MAR 2023



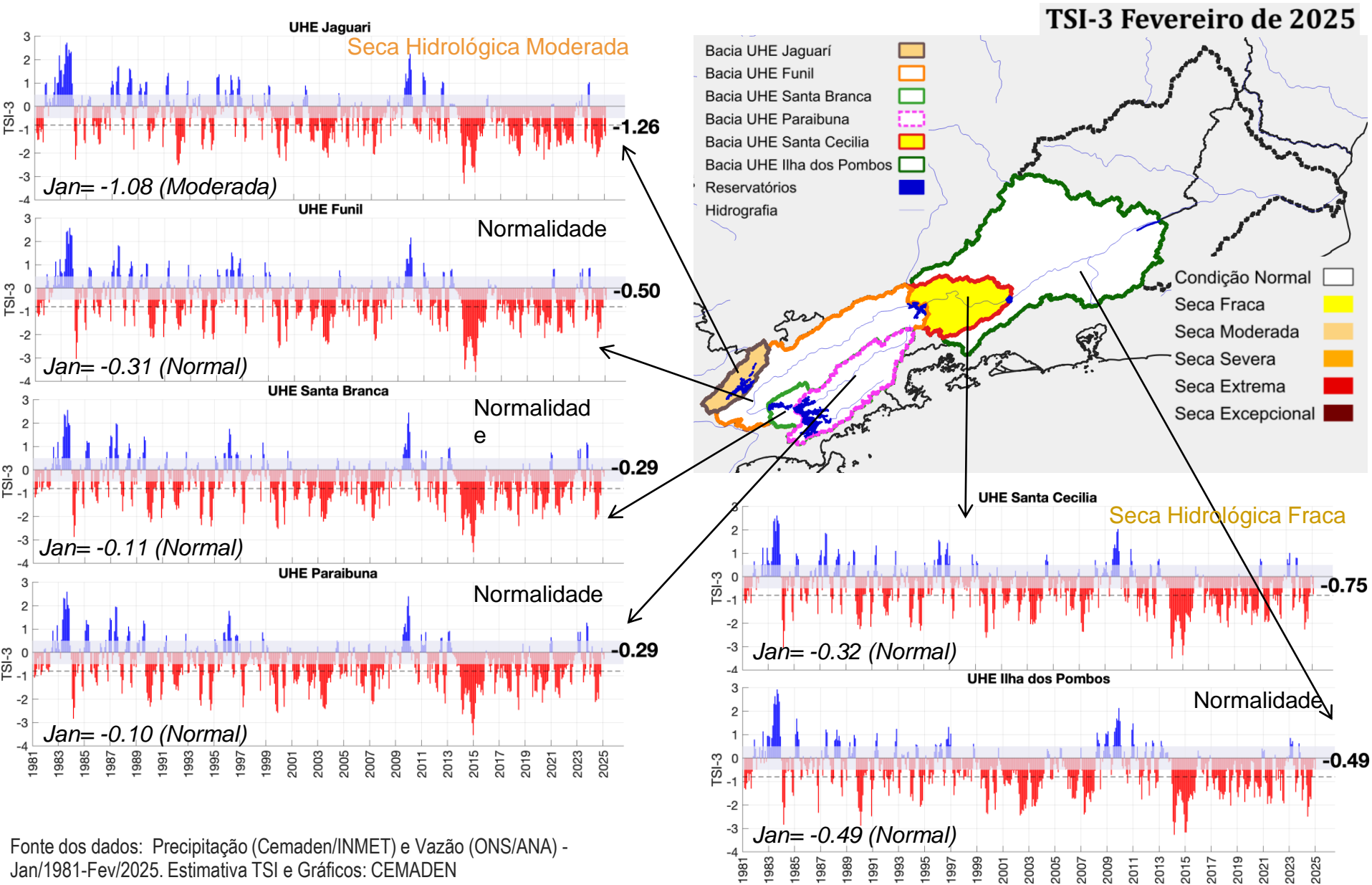
Índice de Seca Bivariado (Chuva-Vazão) - TSI

(Two-variate Standardized Index – Escala de 6 meses)

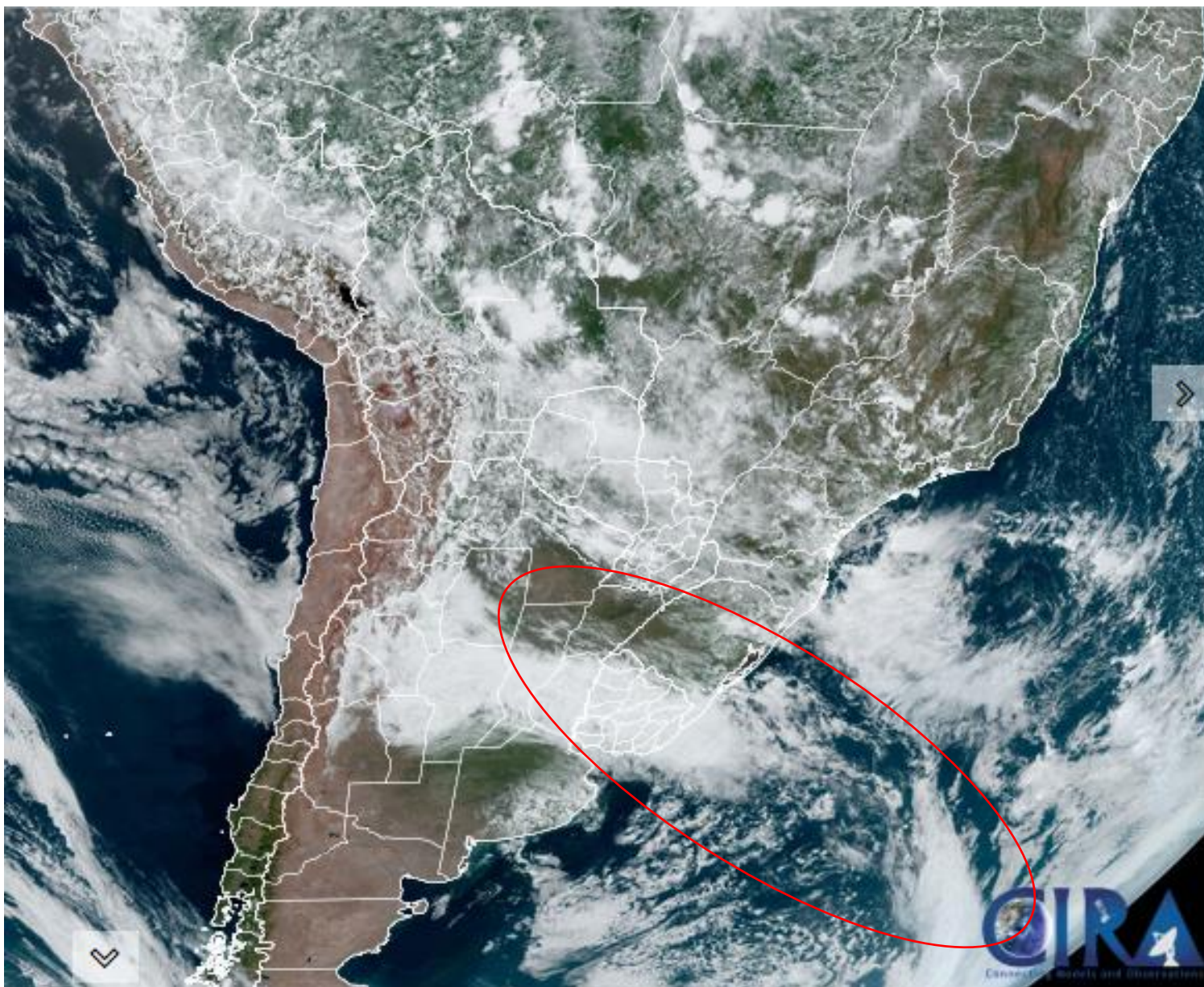


Índice de Seca Bivariado (Chuva-Vazão) - TSI

(Two-variate Standardized Index – Escala de 3 meses)

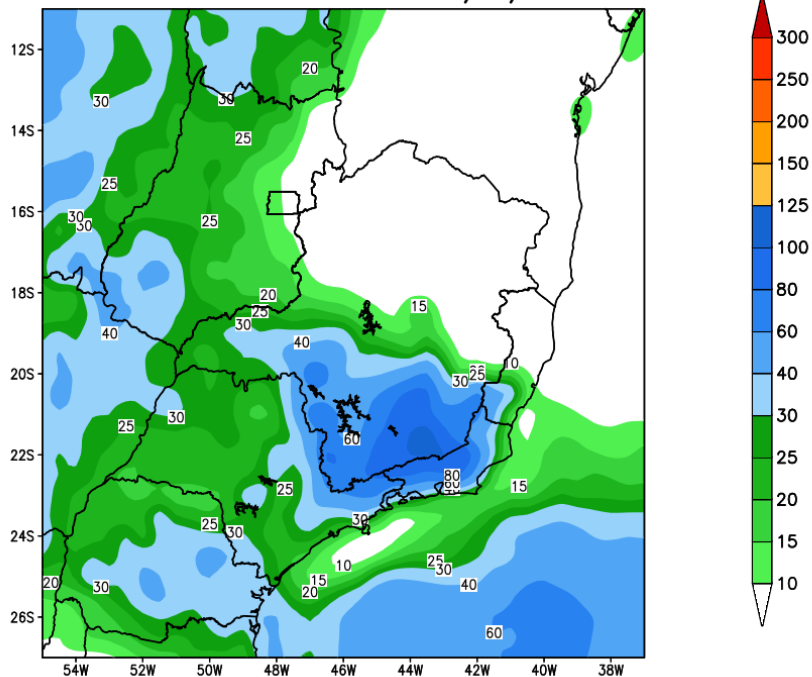


Situação meteorológica atual

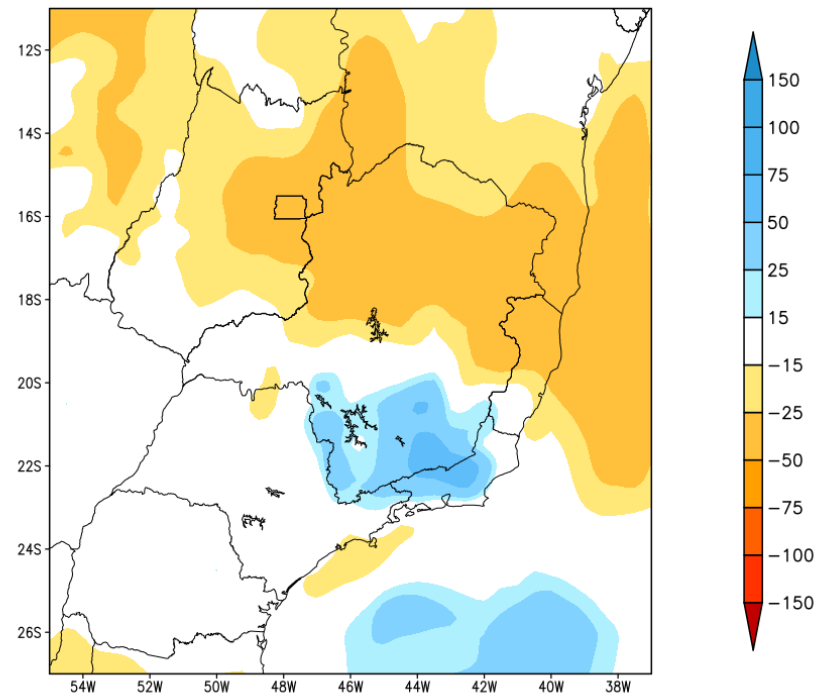


Previsão de chuva para os próximos 7 dias

GEFS / BRASIL_SE
Precipitacao acumulada 1aSem (mm)
Previsao das 00Z dia 12/03/2025

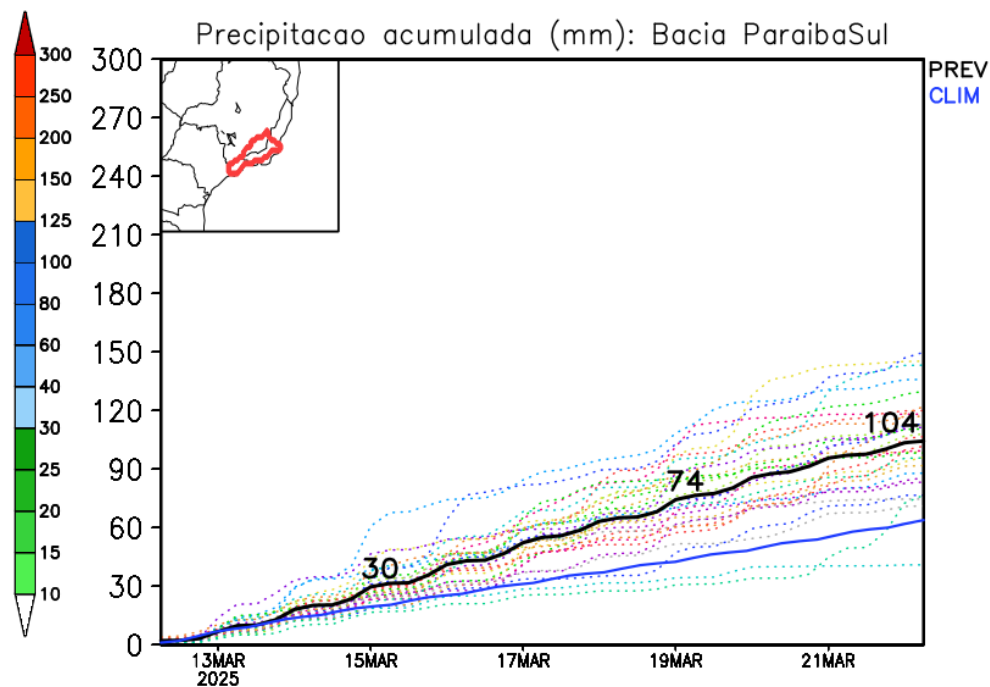
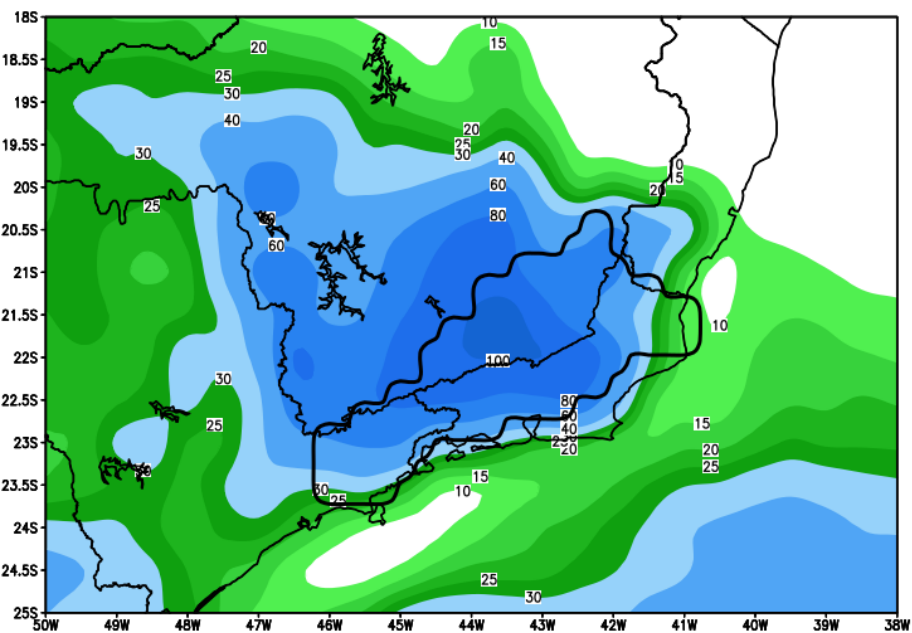


Anomalia de Precipitacao BR_SE (mm)
Periodo: 2025031200 a 2025031900



Rio Paraíba do Sul

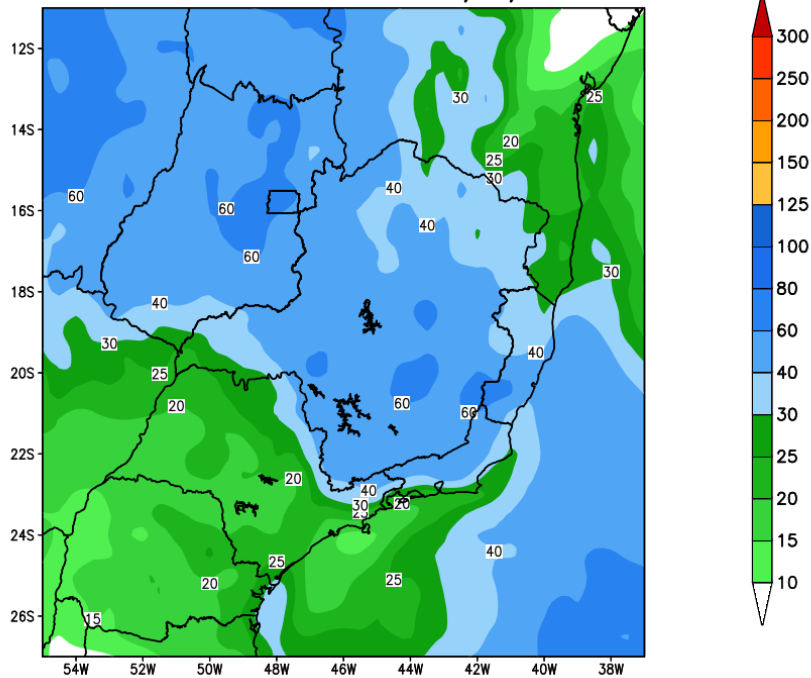
GEFS / Bacia do Rio Paraíba do Sul
Precipitacao acumulada em 7 dias (mm)
Previsao das 00Z dia 12/03/2025



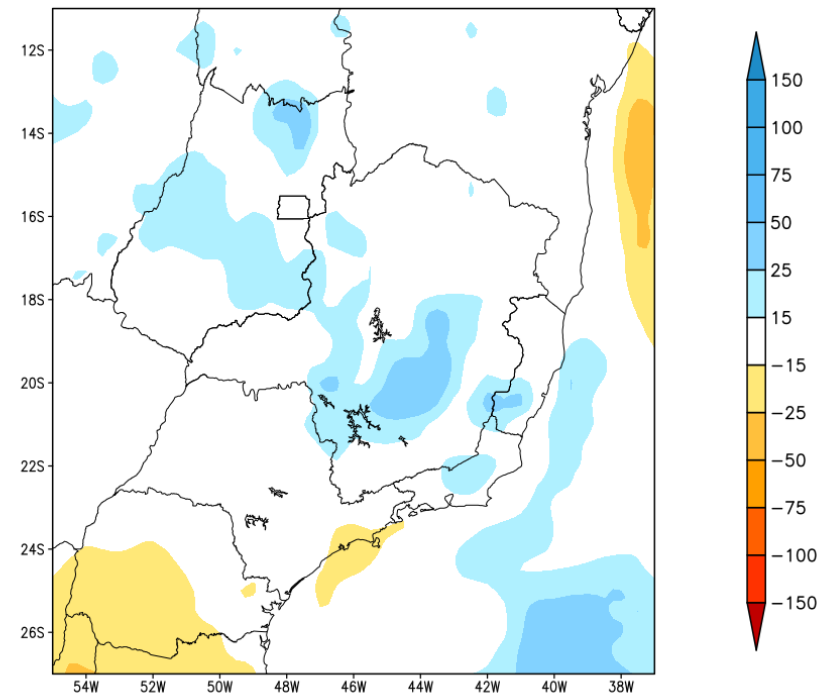
Modelo GEFS/NOAA

Tendência para a 2a semana

GEFS / BRASIL_SE
Precipitacao acumulada 2aSem (mm)
Previsao das 00Z dia 12/03/2025

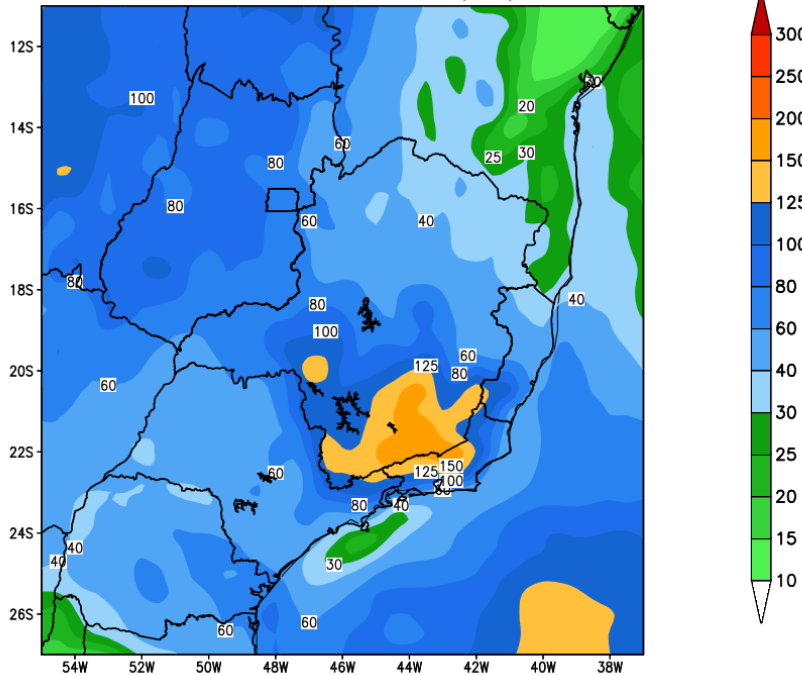


Anomalia de Precipitacao BR SE (mm)
Periodo: 2025032000 a 2025032600

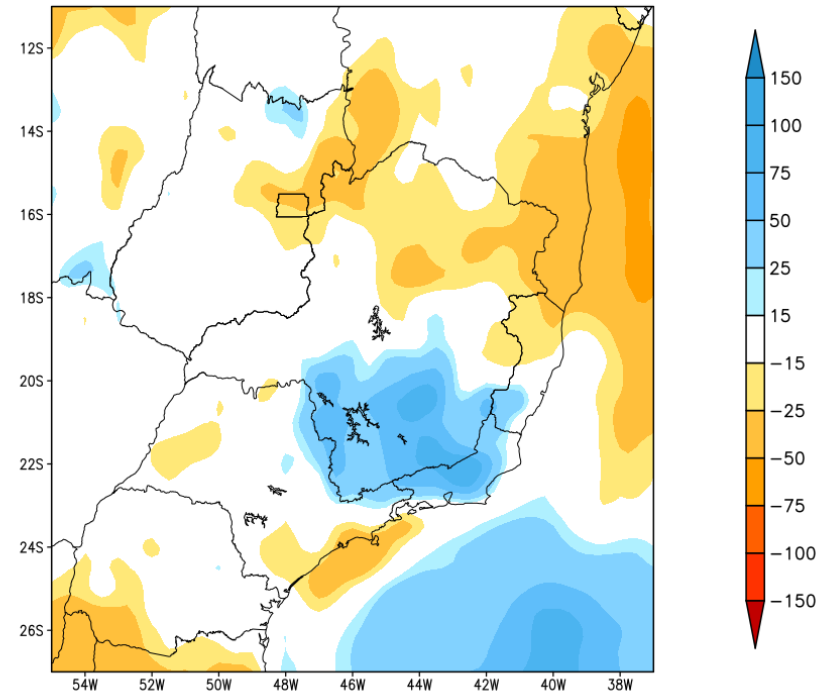


Tendência para as próximas duas semanas

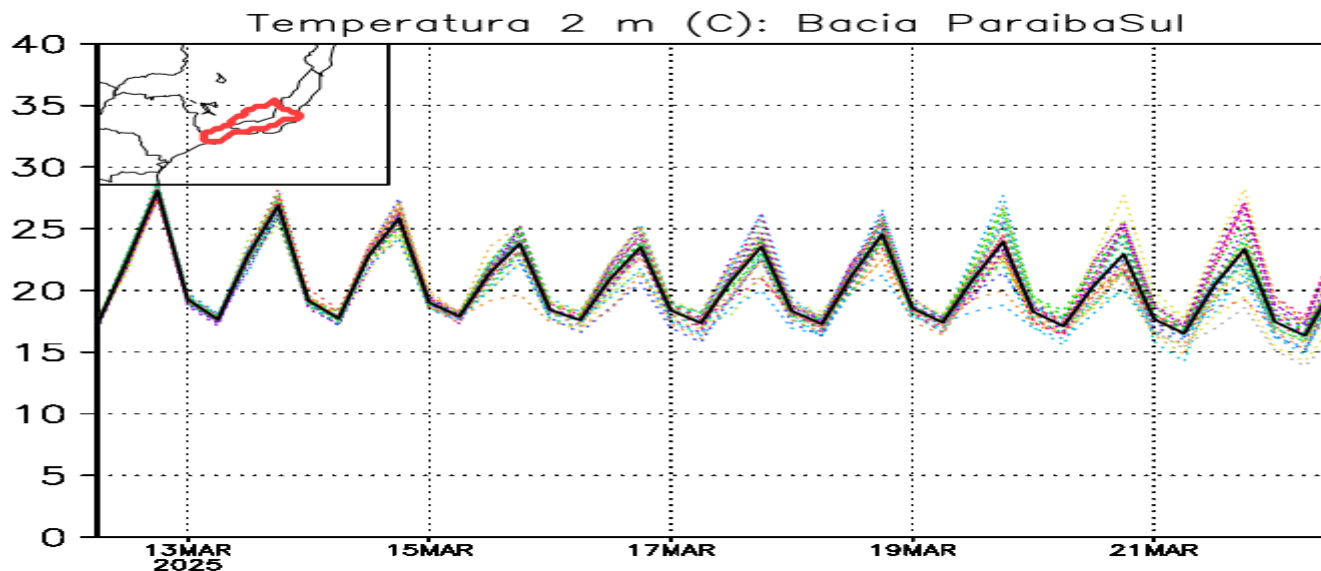
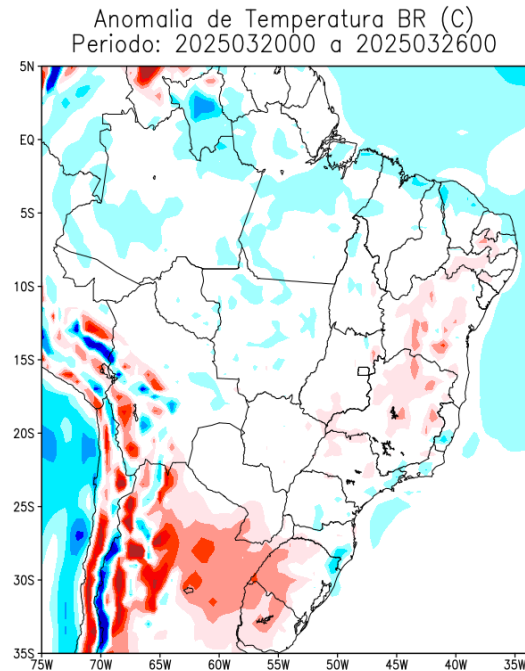
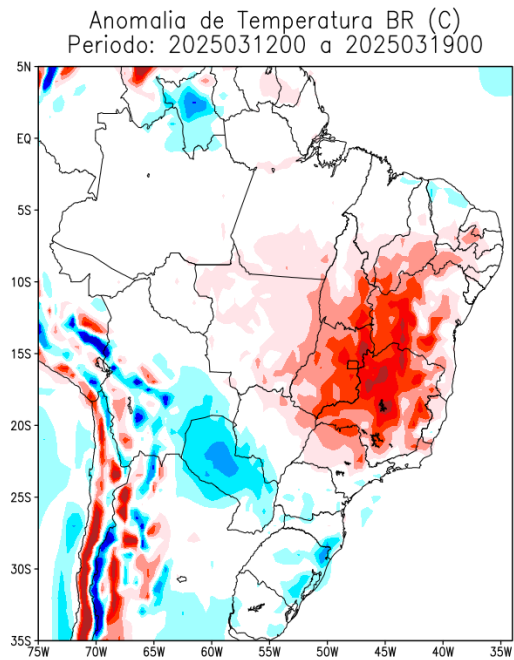
GEFS / BRASIL_SE
Precipitacao acumulada 14dias (mm)
Previsao das 00Z dia 12/03/2025



Anomalia de Precipitacao BR SE (mm)
Periodo: 2025031200 a 2025032600

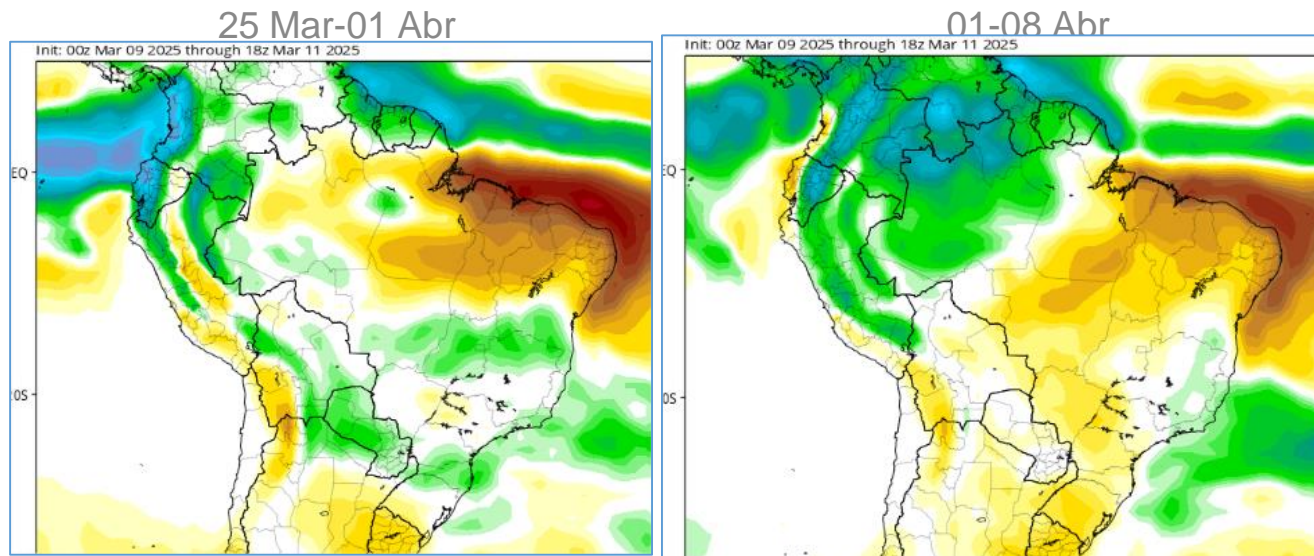


Previsão de Temperatura para as próximas duas semanas

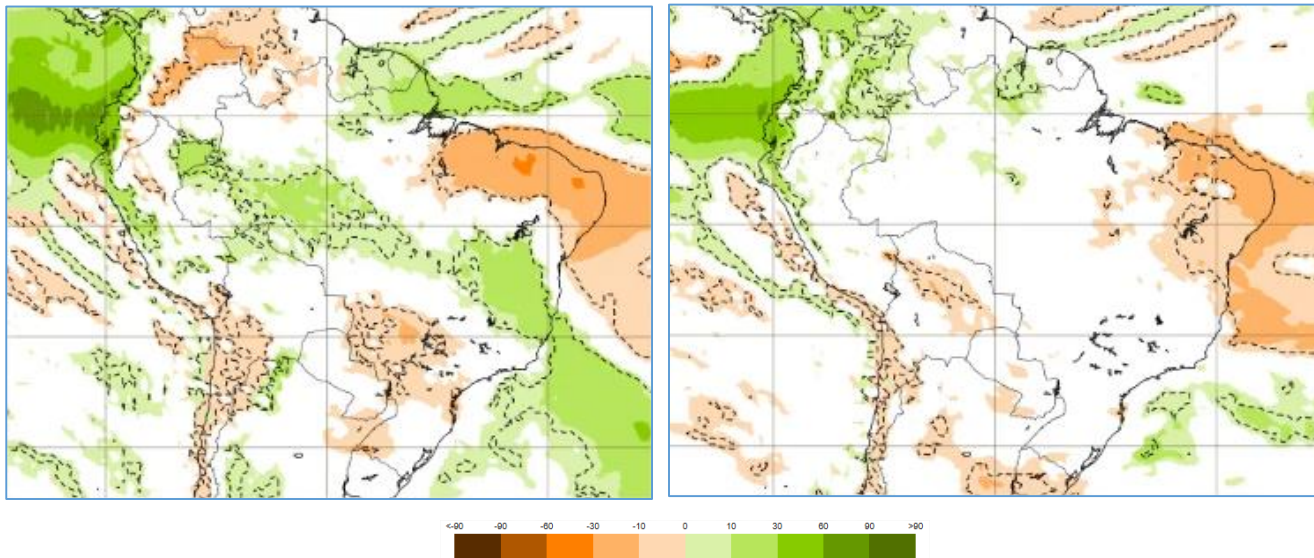


Anomalia de Chuva 3a e 4a semanas

CFS/NOAA



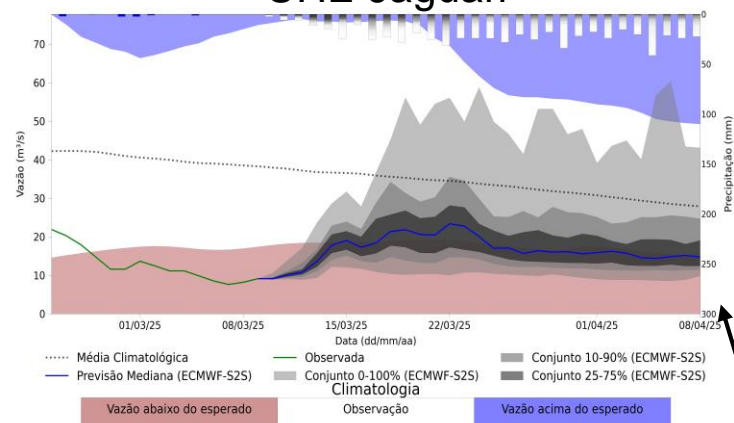
ECMWF



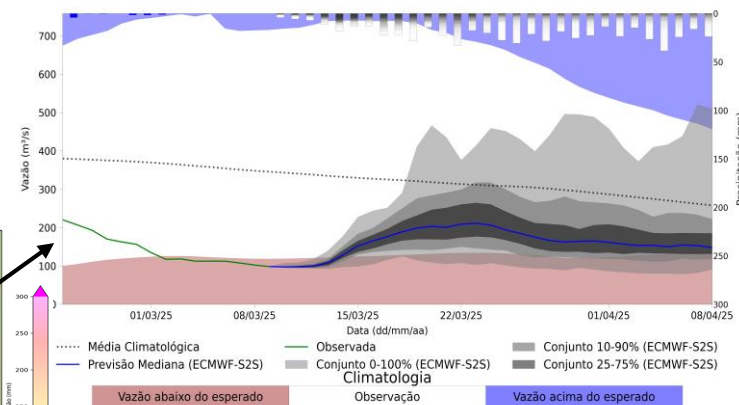
Previsão de vazão natural na Bacia Rio Paraíba do Sul 30 dias (Modelo hidrológico MHD)

Previsão: 09/03/2025 a 08/04/2025

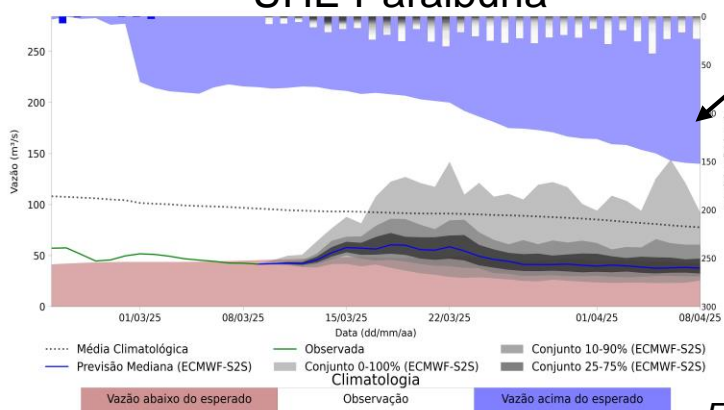
UHE Jaguari



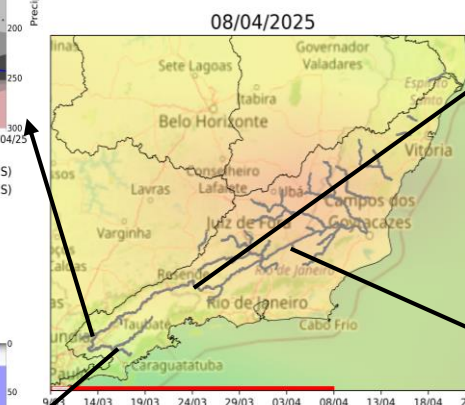
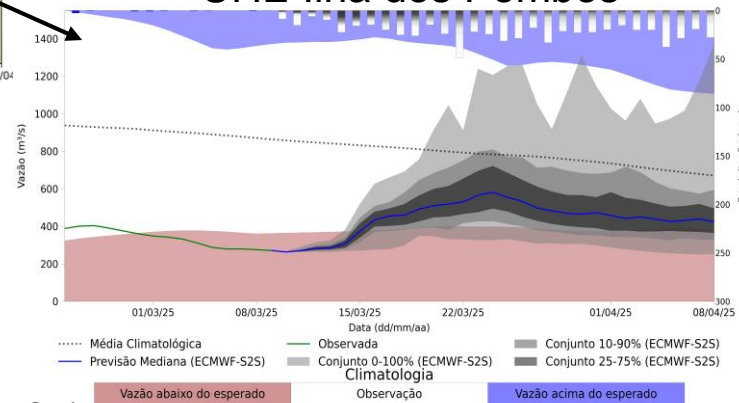
UHE Funil



UHE Paraibuna



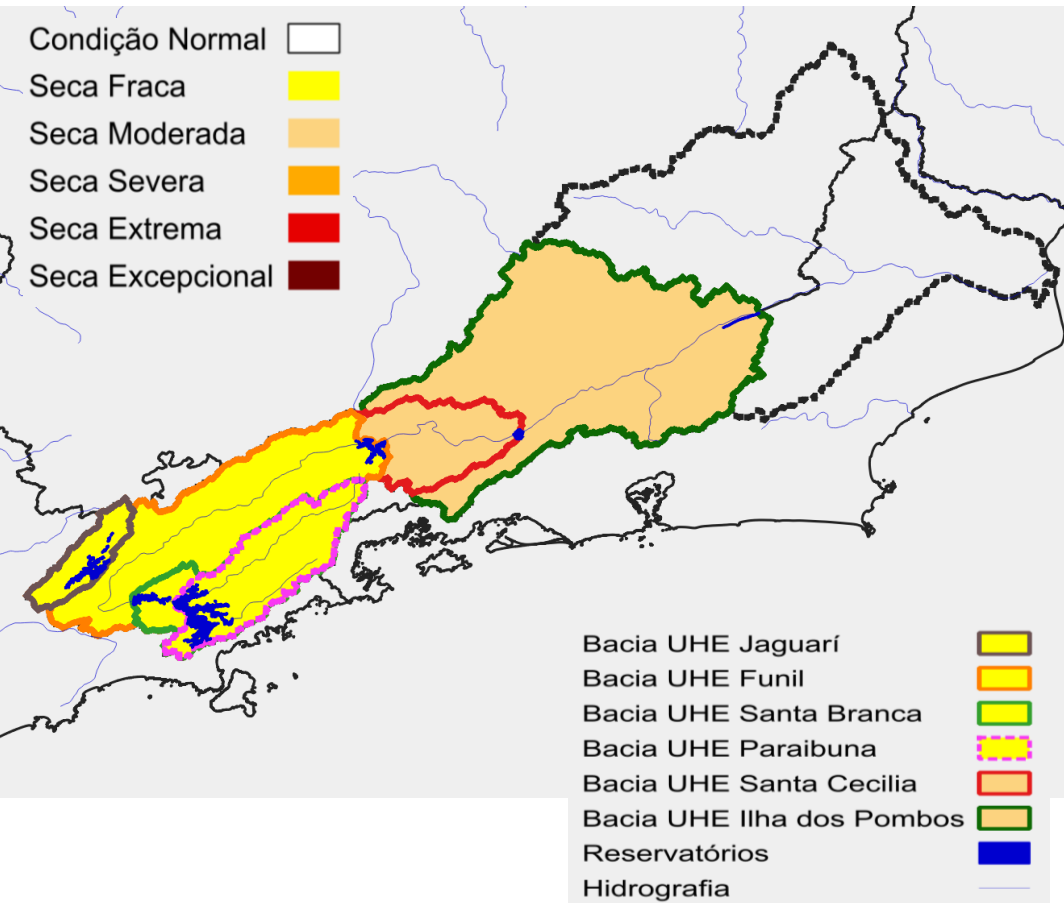
UHE Ilha dos Pombos



Fonte: Meteorologia (INMET/MERGE);
Vazão (ANA/ONS)
MLT: 1993-2023
Previsão Meteorológica: ECMWF-S2S

Índice de Seca Bivariado (Chuva-Vazão) - TSI (Two-variate Standardized Index – **Escala de 6 meses**)

Previsão Próximos 30 dias



Desintensificação da seca:

- Jaguarí (*Severa -> Fraca*)
- Ilha dos Pombos (*Severa -> Mod.*)

Estabilidade da seca:

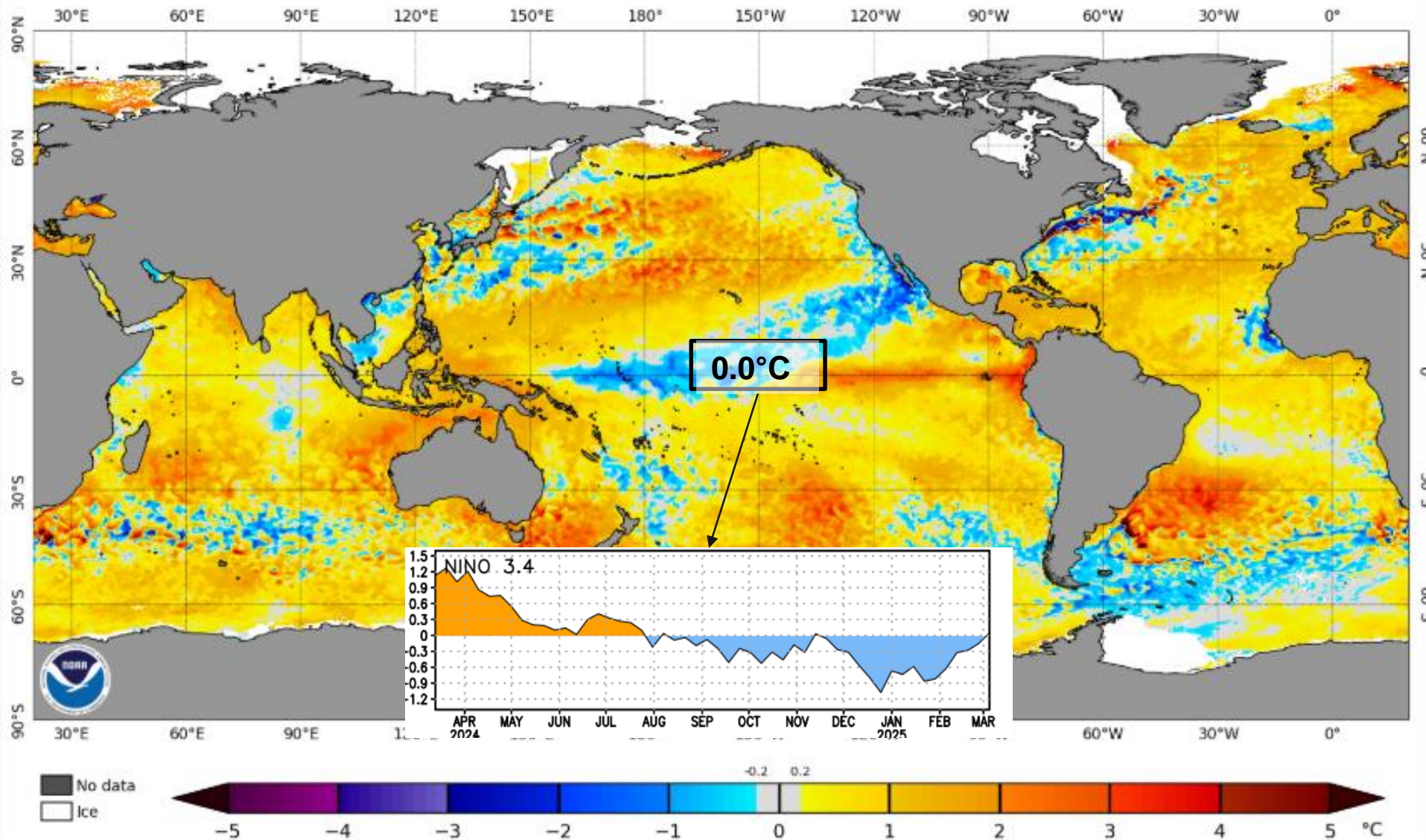
- Funil
- Santa Branca
- Paraibuna
- Santa Cecília

Fonte: CEMADEN/MCTI

Previsão de Precipitação: Climate Forecast System (CFS)

Status Atual: La Niña

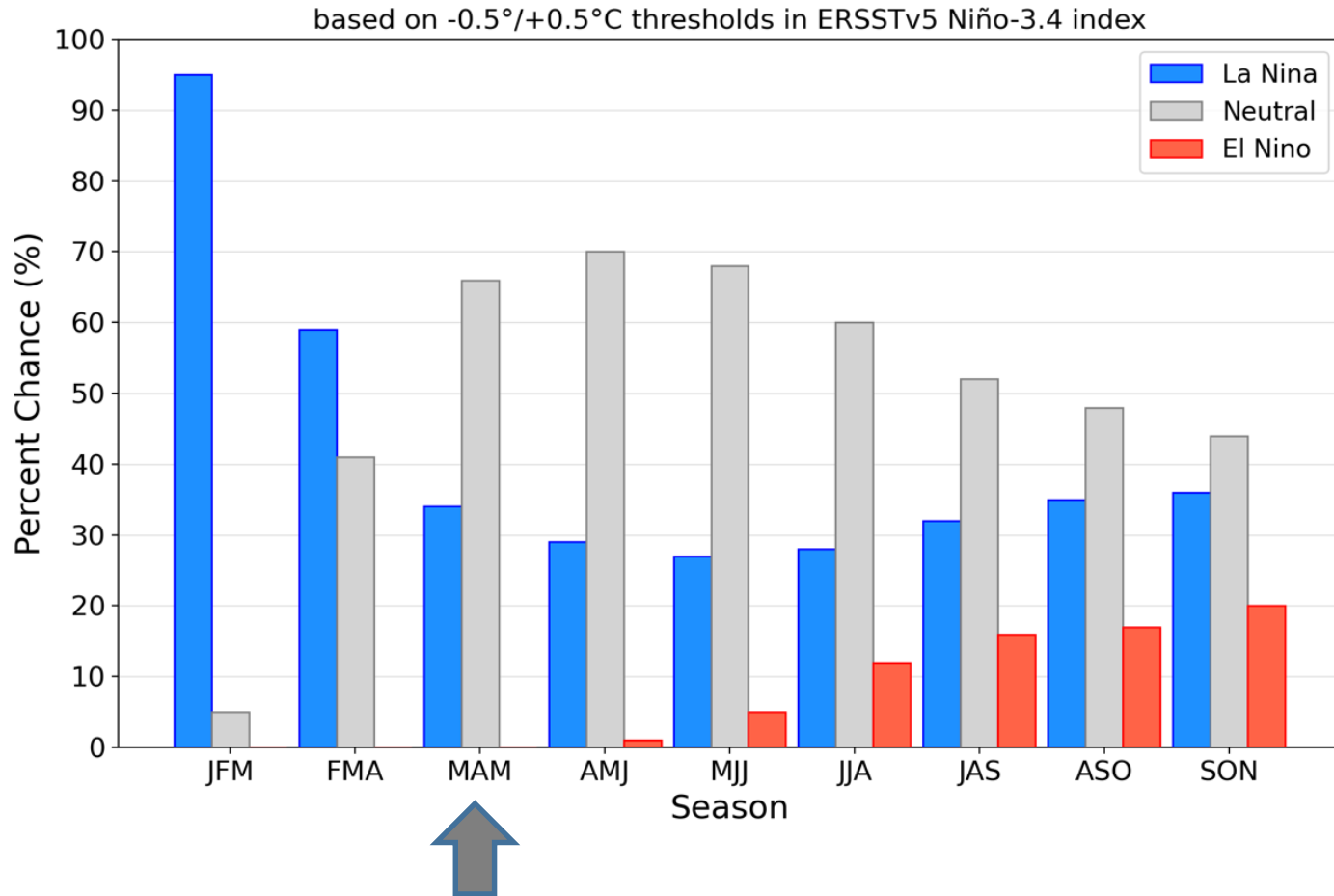
NOAA Coral Reef Watch Daily 5km SST Anomalies (v3.1) 10 Mar 2025



FONTE: NOAA

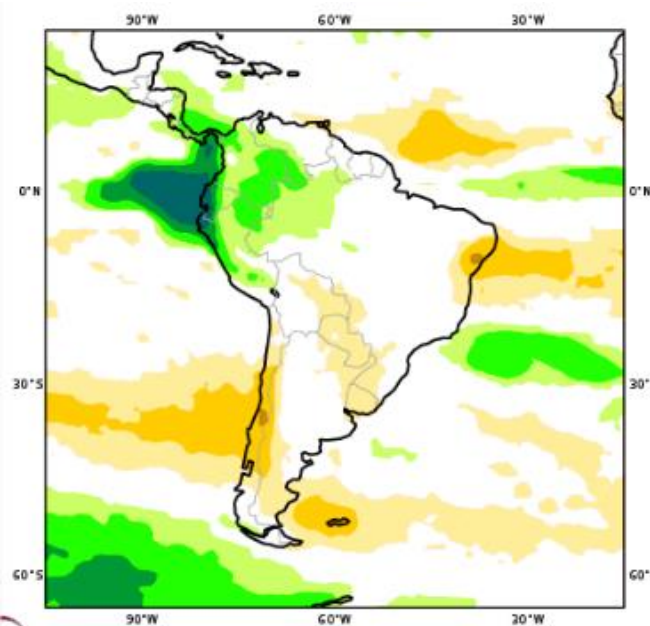
Previsão do “ENSO”

Official NOAA CPC ENSO Probabilities (issued February 2025)

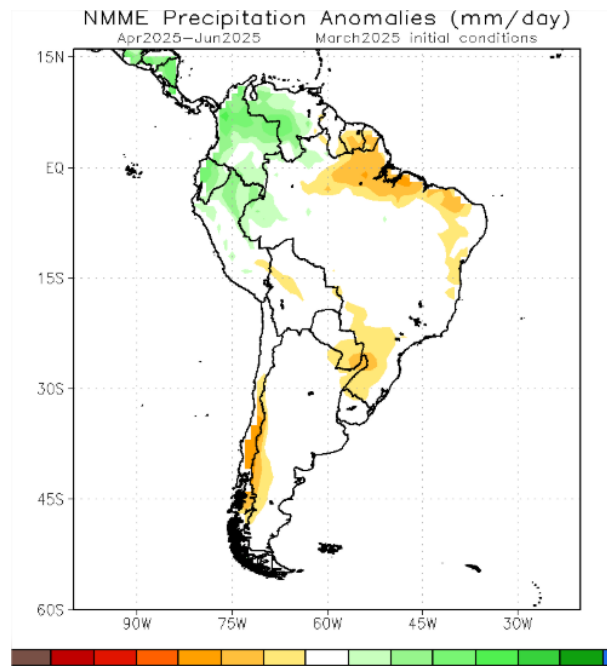


Previsão Sazonal de Chuva Multi-Modelo

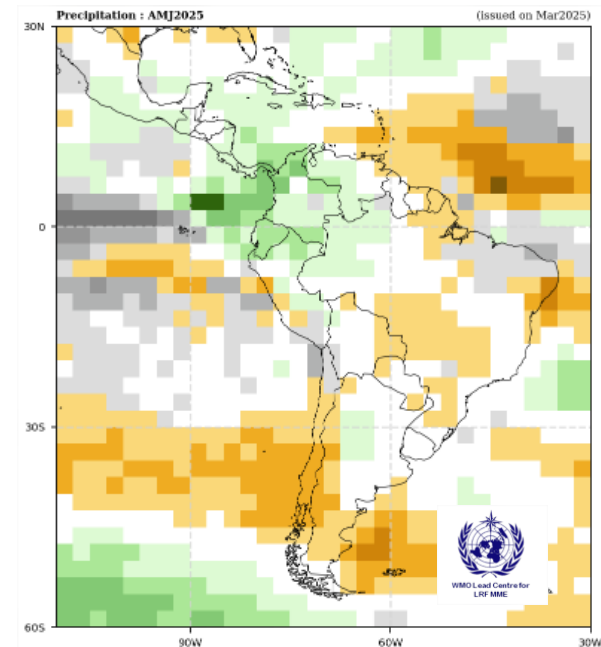
Abril-Maio-Junho



Modelos Europeus



Modelos Norte Americanos



Modelos da WMO

Bacia do rio Paraíba do Sul: Previsão de Vazão para os próximos 3 meses (Sistema Global de Previsão de Vazão - GLOFAS)

