



CEMADEN

**Centro Nacional de Monitoramento e
Alertas de Desastres Naturais**

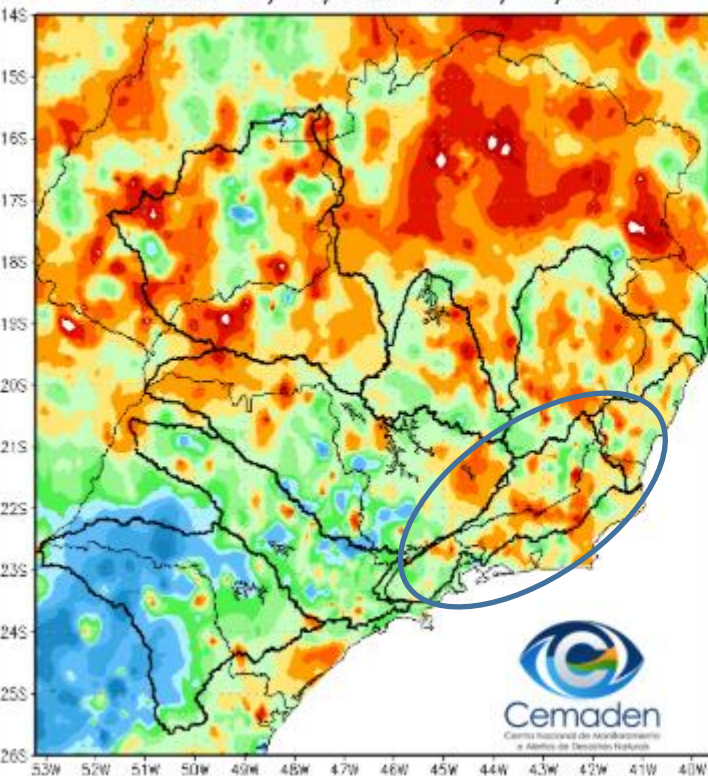
Monitoramento e Previsões para a Bacia do Rio Paraíba do Sul

11 de Novembro de 2025

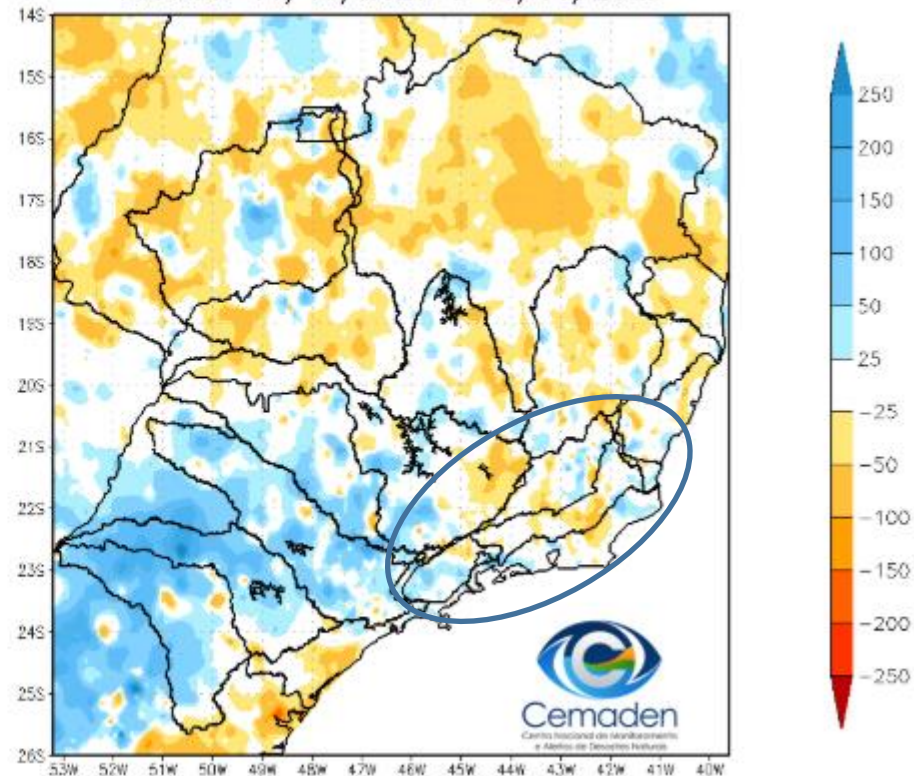


Precipitação acumulada nos últimos 30 dias

Precipitação Acumulada (mm) A.S.
Período: 11/10/2025 a 10/11/2025

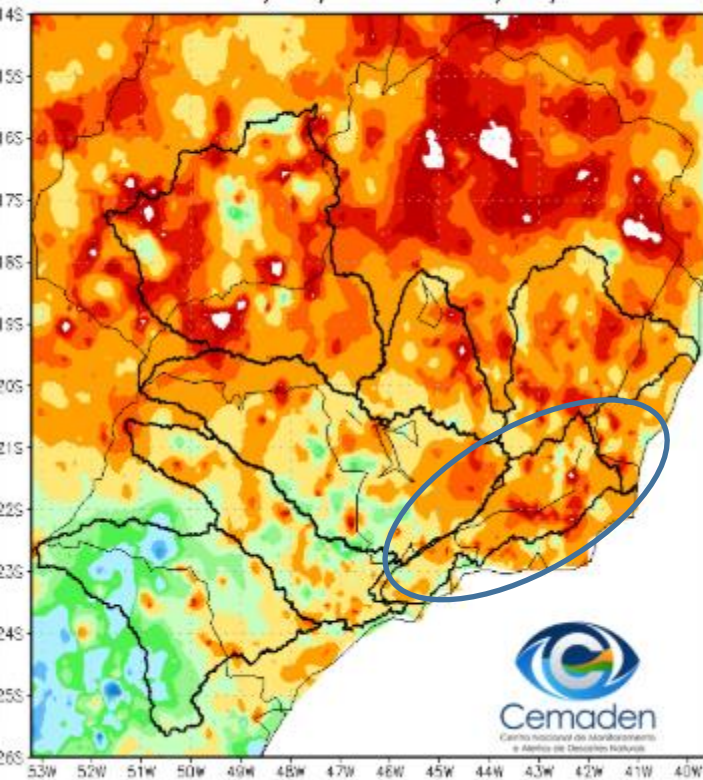


Anomalia de Precipitação (mm) A.S.
Período: 11/10/2025 a 10/11/2025

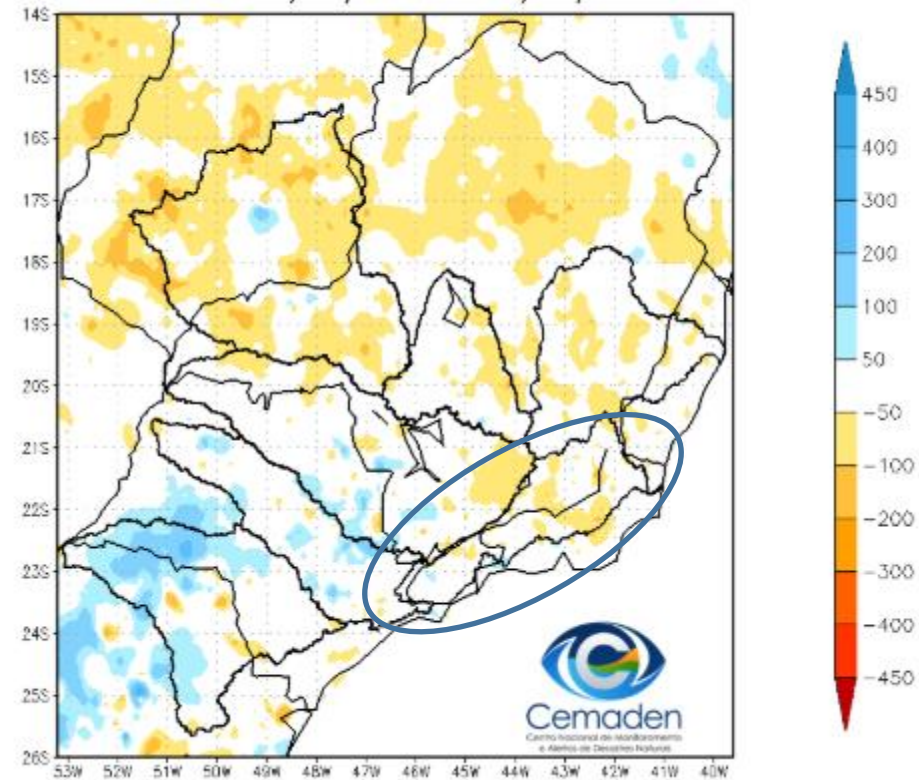


Precipitação acumulada no ano hidrológico

Precipitação Acumulada (mm) A.S.
Período: 01/10/2025 a 10/11/2025

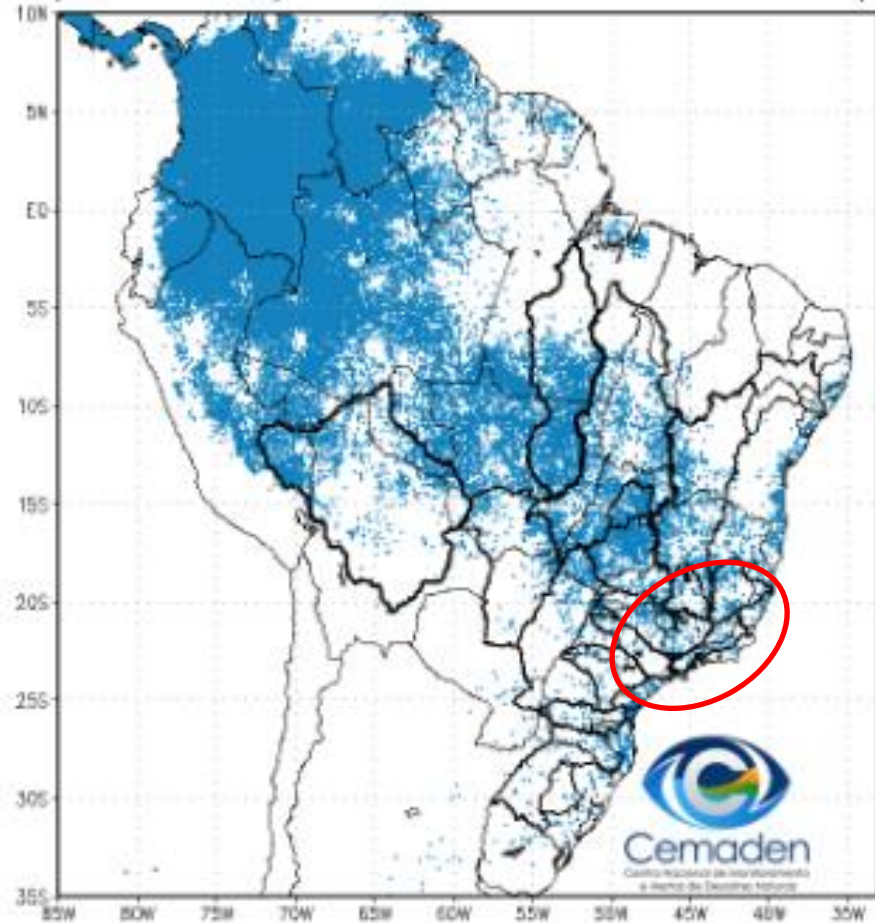


Anomalia de Precipitação (mm) A.S.
Período: 01/10/2025 a 10/11/2025

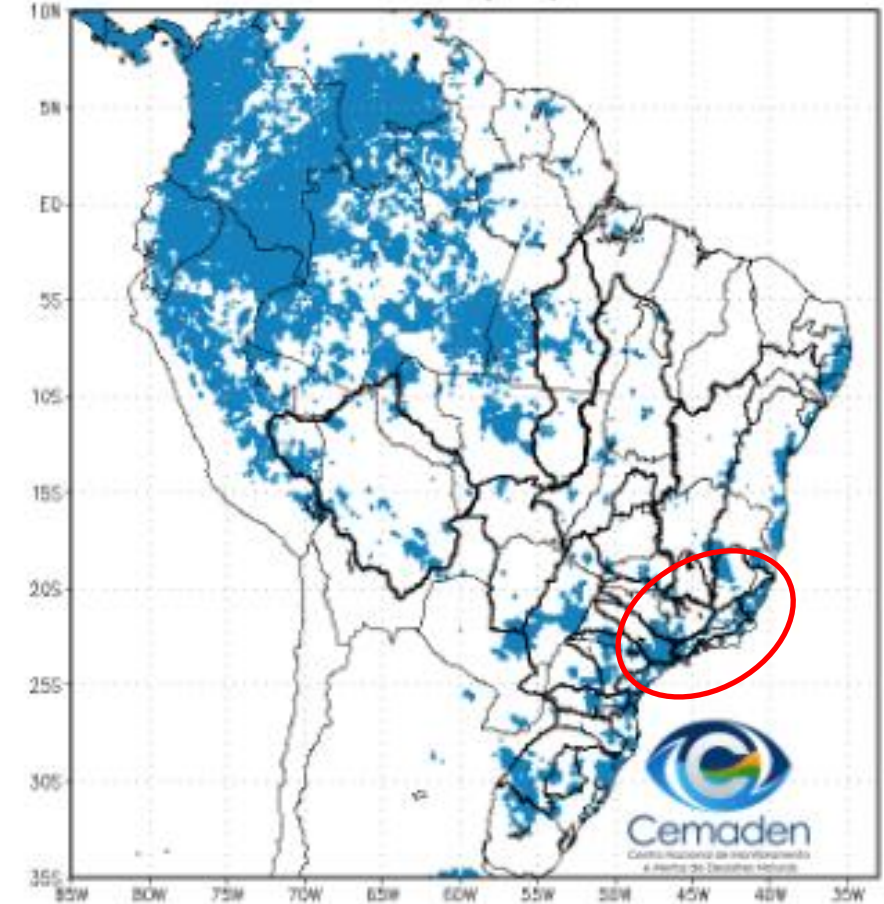


Situação da Estação Chuvosa

Climatologia da Precipitação (2001–2024)
Superior 3 mm/dia em 4 de 5 dias Período: 10/11

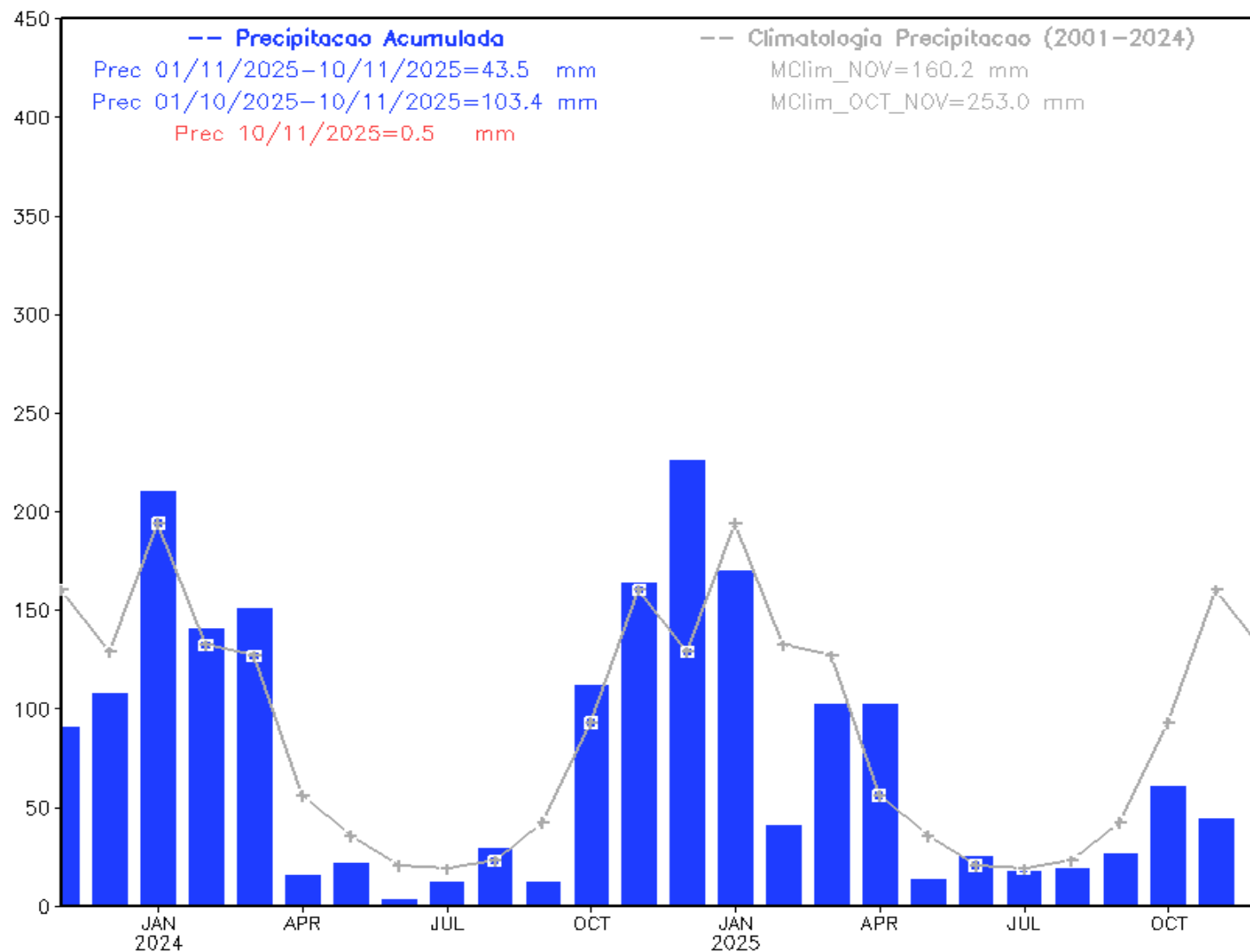


precipitação A.S. Superior a 3 mm/dia por 4 de 5 dias
Período: 10/11/2025



Evolução Temporal da Precipitação

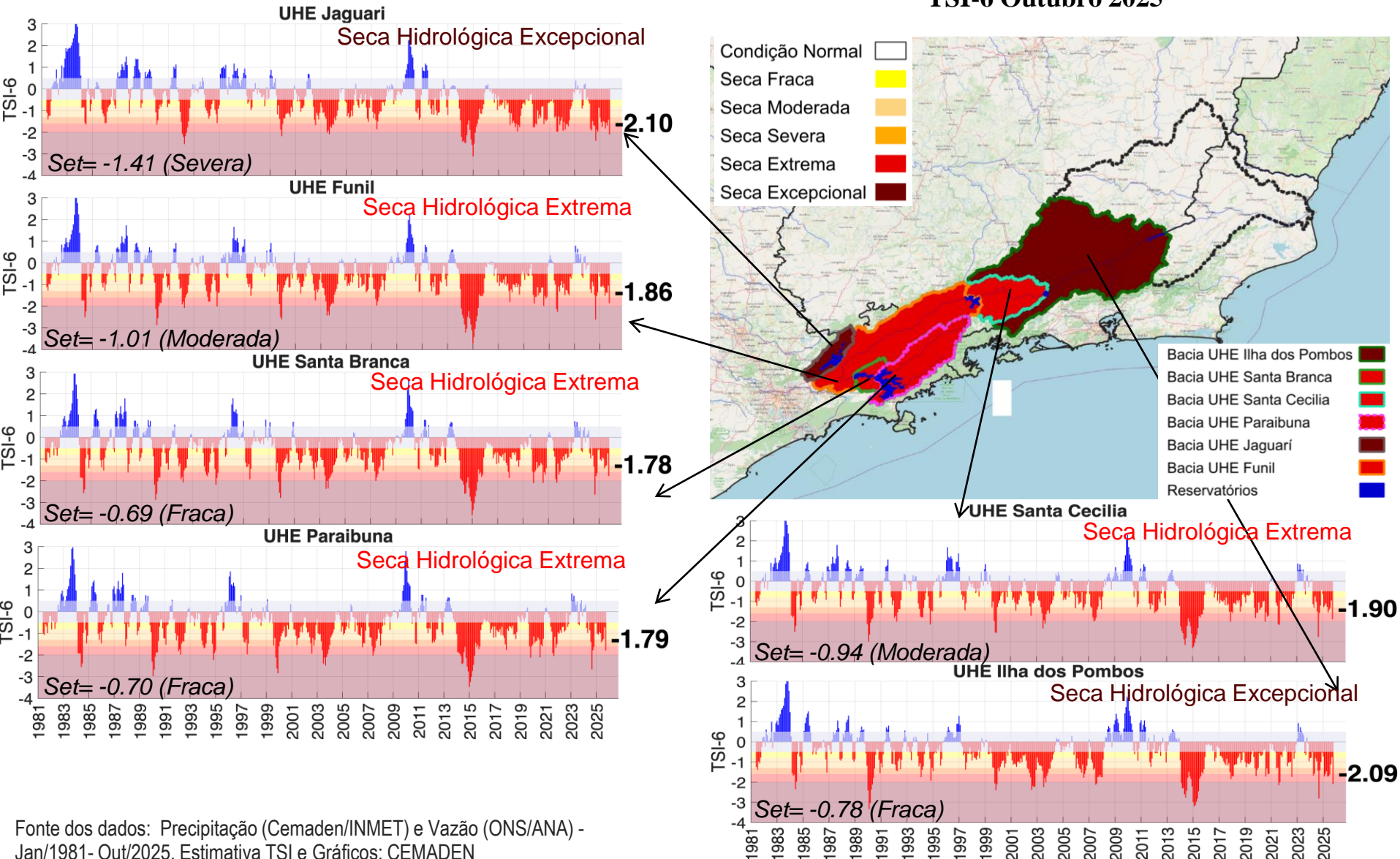
Precipitacao Bacia do Rio Paraiba_Sul desde NOV 2023



Índice de Seca Bivariado (Chuva-Vazão) - TSI

(Two-variate Standardized Index – Escala de 6 meses)

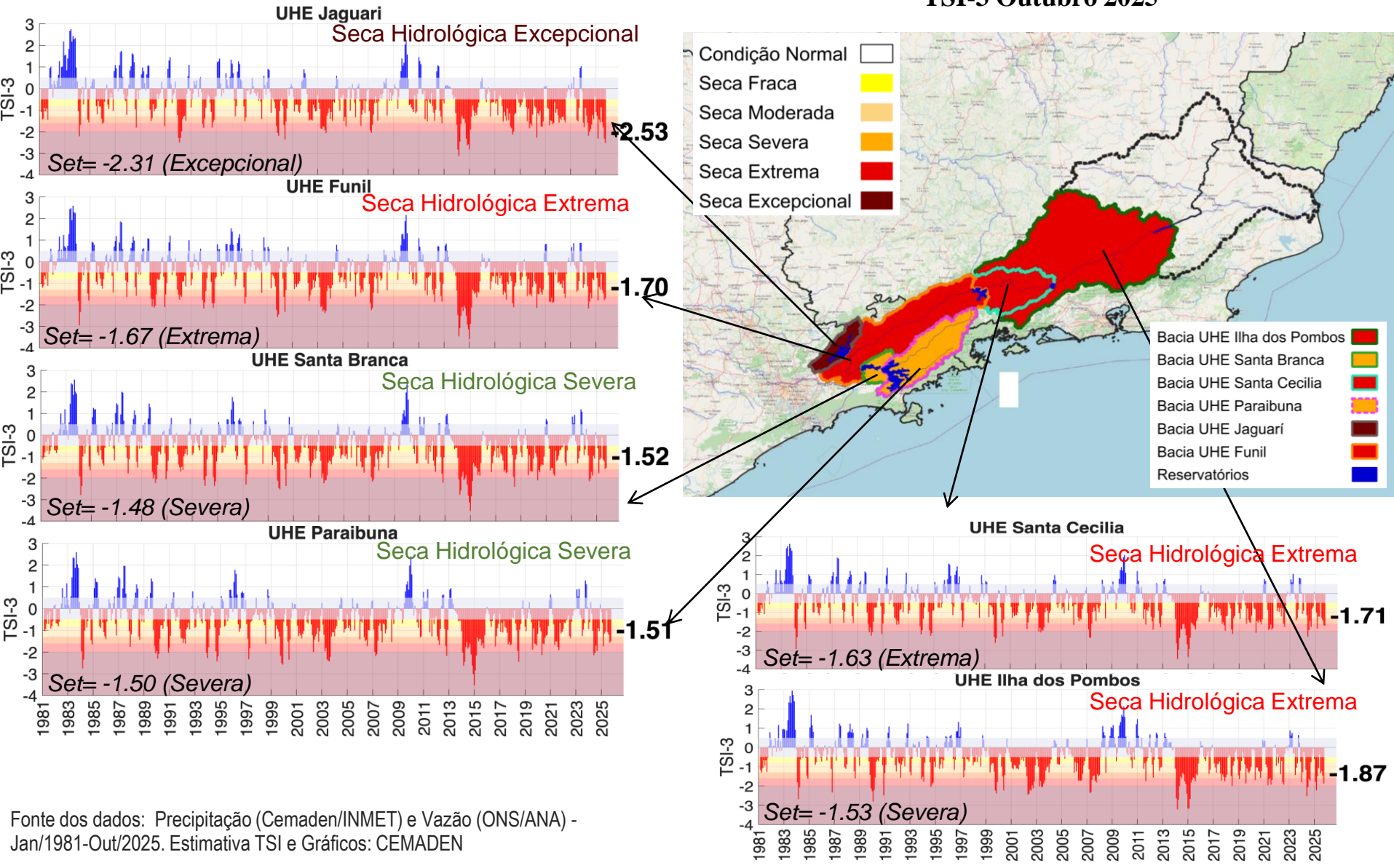
TSI-6 Outubro 2025



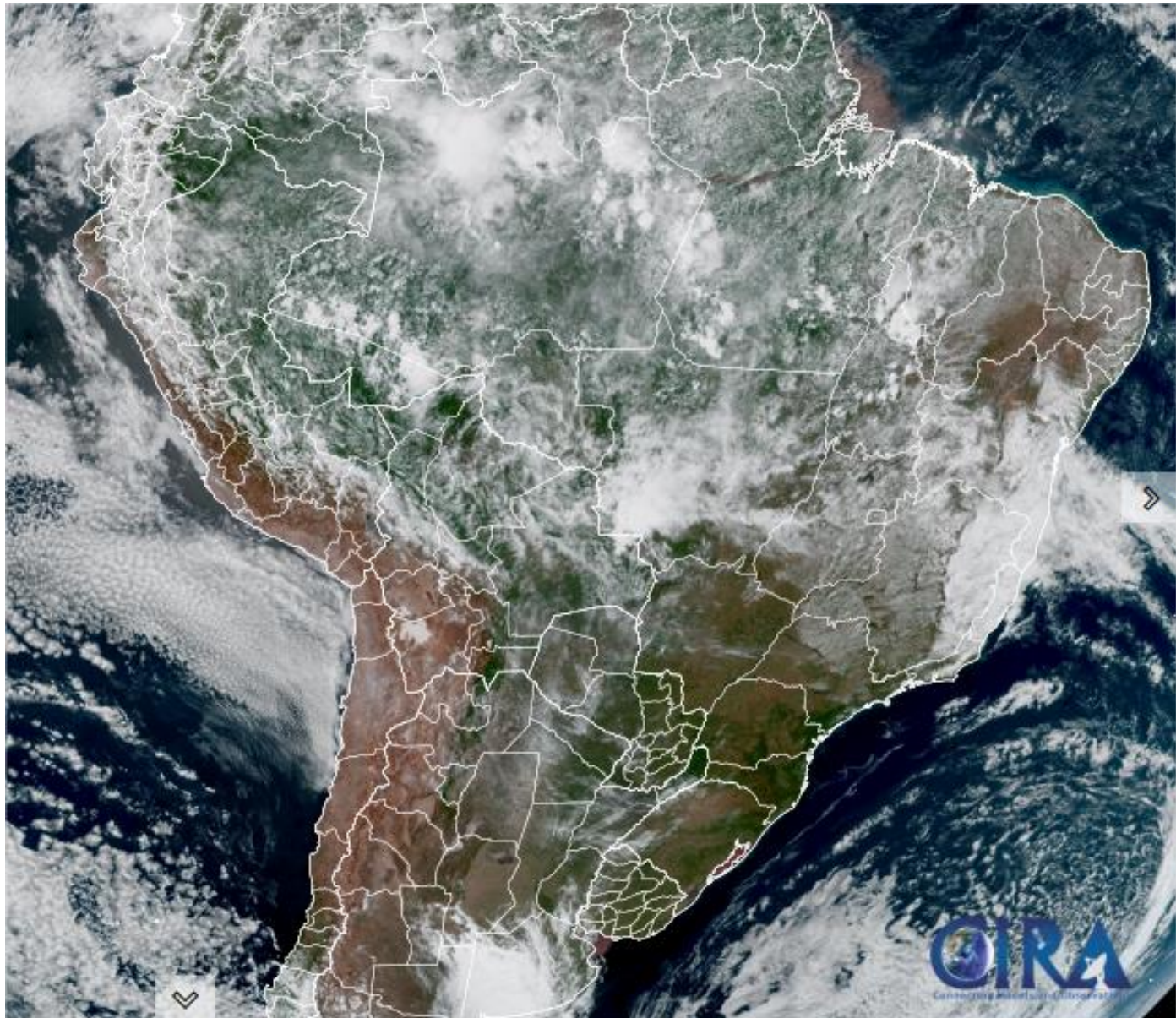
Índice de Seca Bivariado (Chuva-Vazão) - TSI

(Two-variate Standardized Index – Escala de 3 meses)

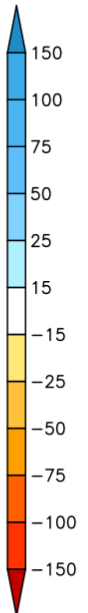
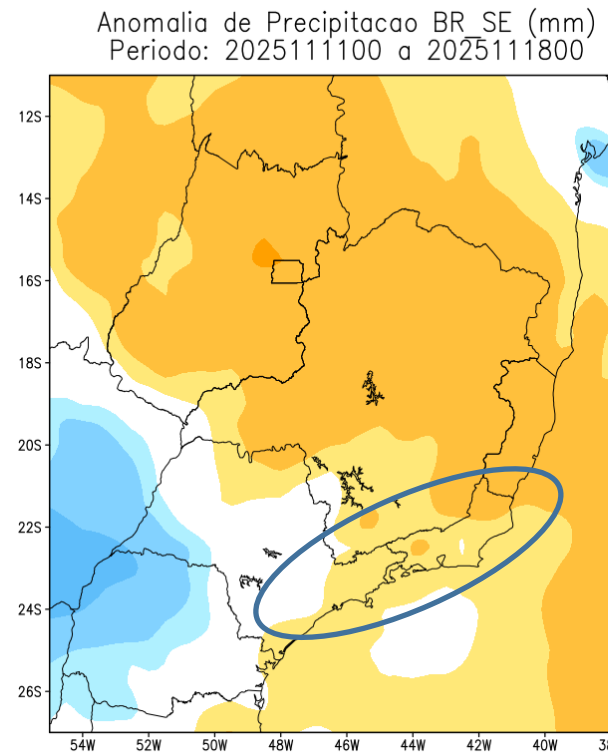
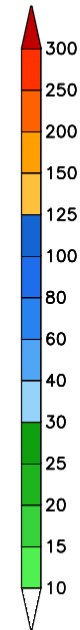
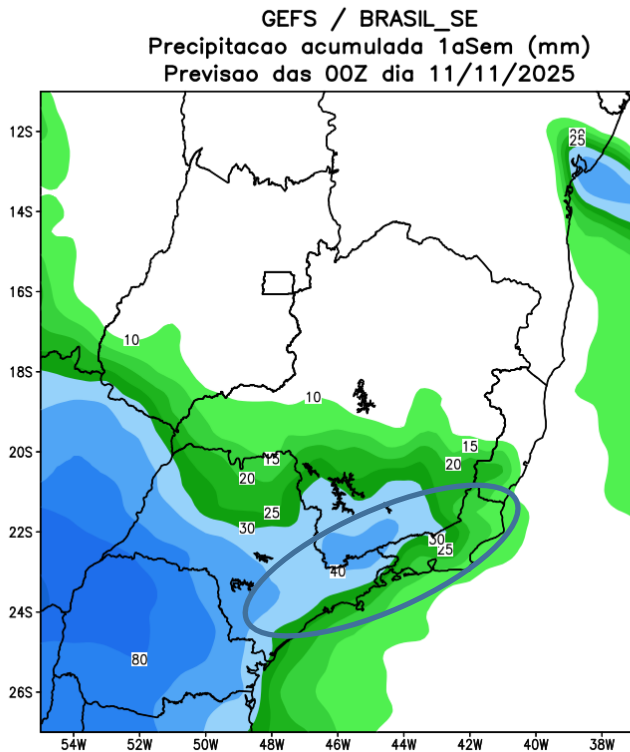
TSI-3 Outubro 2025



Situação meteorológica atual

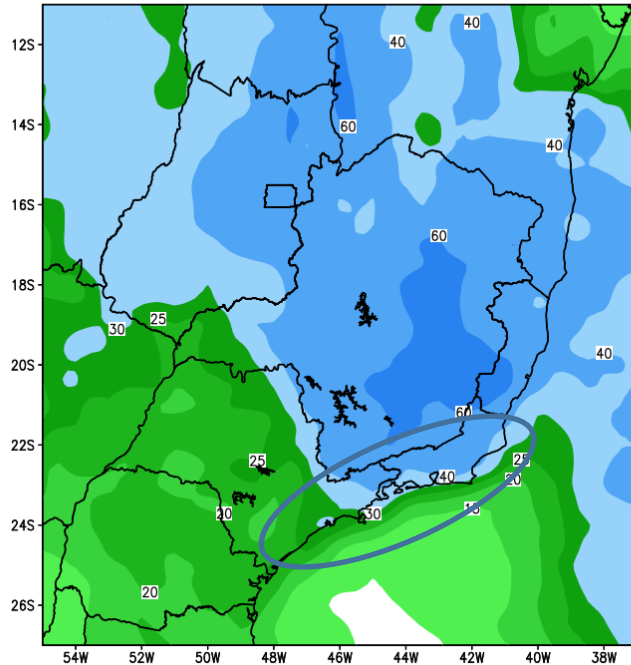


Previsão Primeira Semana

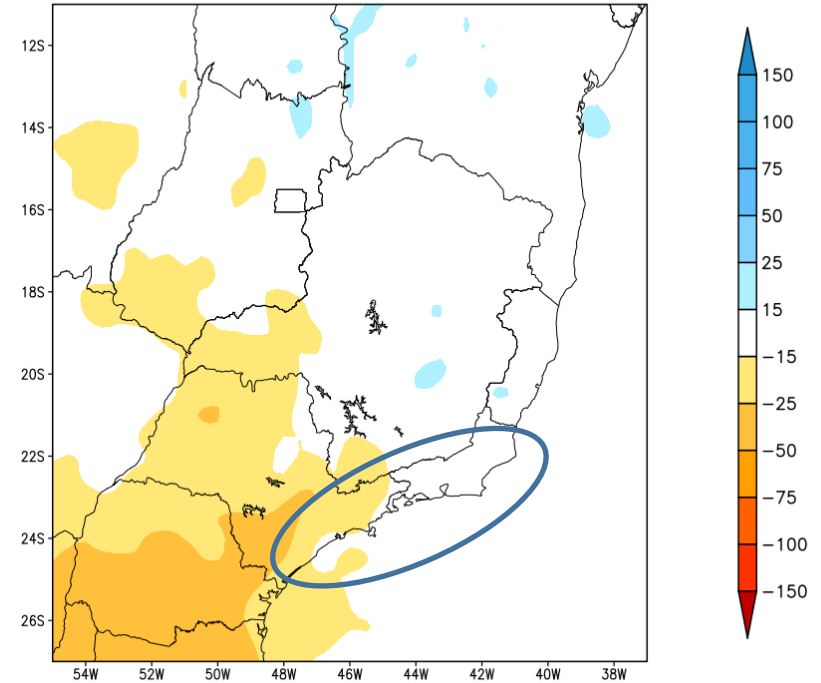


Previsão Segunda Semana

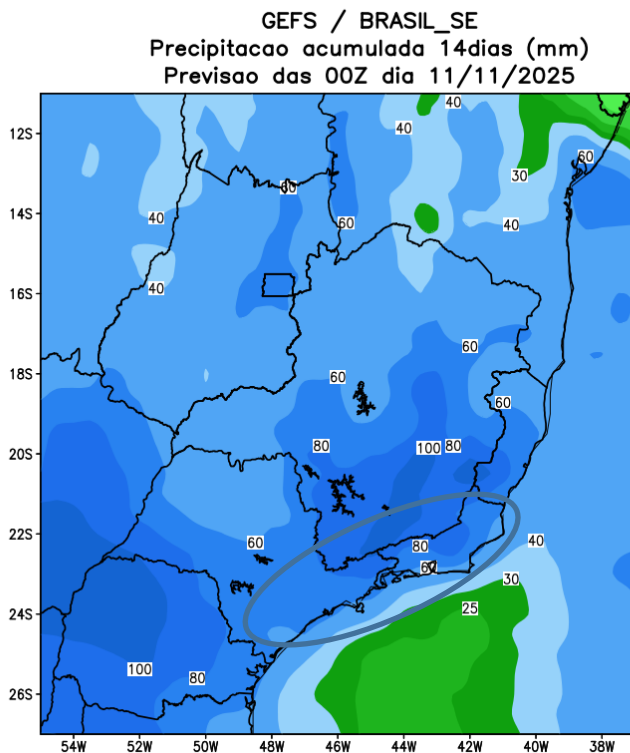
GEFS / BRASIL_SE
Precipitação acumulada 2aSem (mm)
Previsão das 00Z dia 11/11/2025



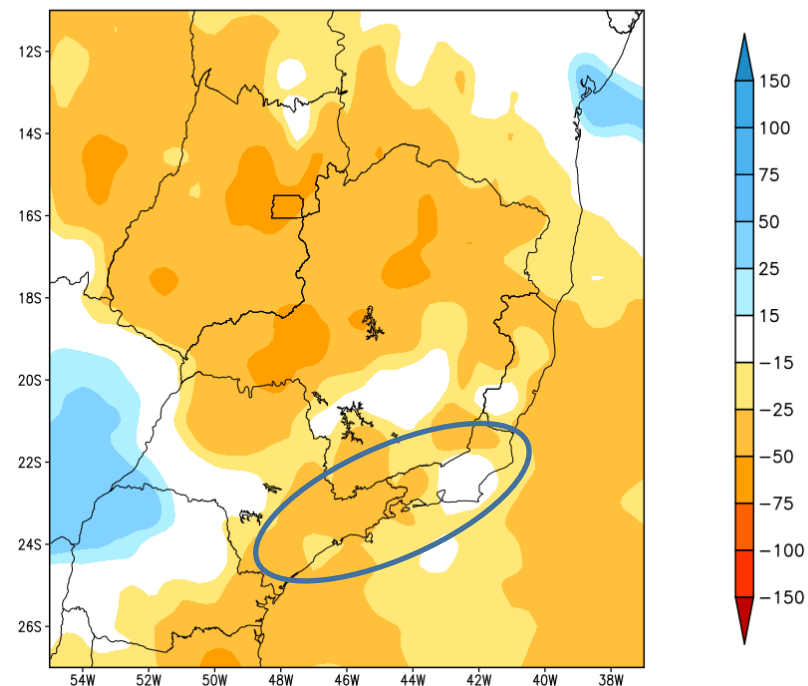
Anomalia de Precipitação BR_SE (mm)
Período: 2025111900 a 2025112500



Previsão Próximas duas Semanas



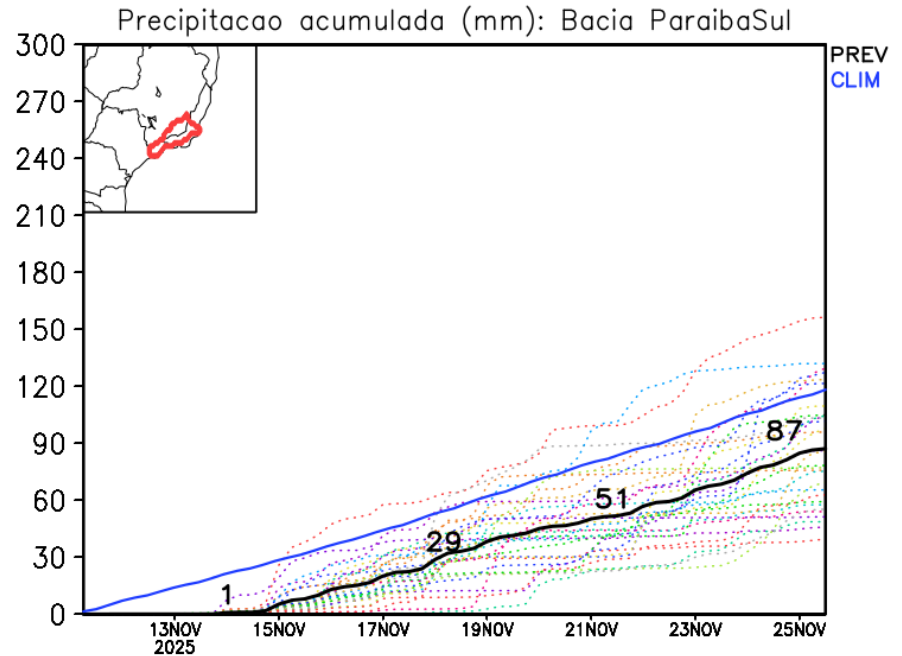
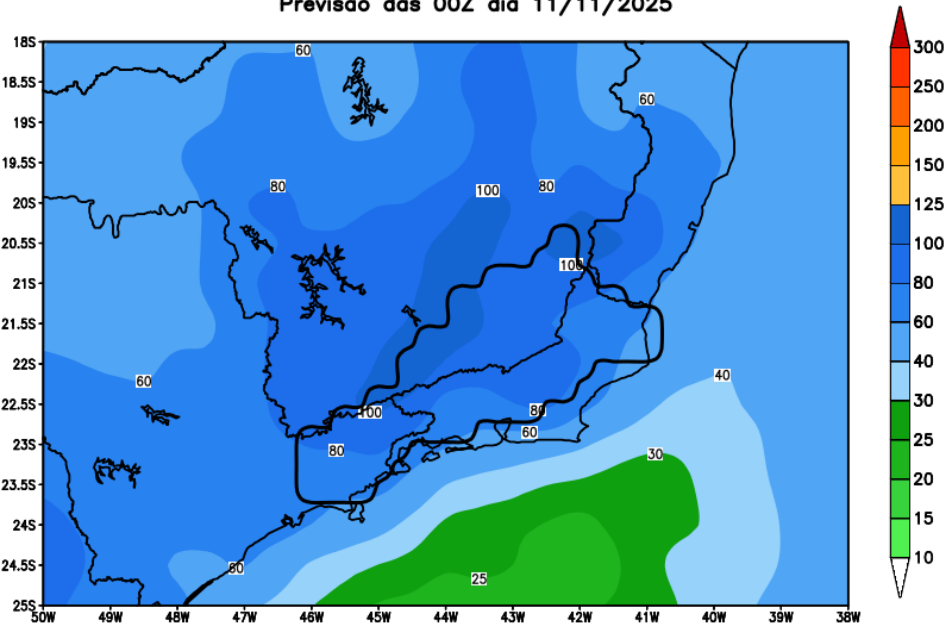
Anomalia de Precipitacao BR SE (mm)
Periodo: 2025111100 a 2025112500



Rio Paraíba do Sul

previsão de chuva em 14 dias

GEFS / Bacia do Rio Paraíba do Sul
Precipitação acumulada em 14 dias (mm)
Previsão das 00Z dia 11/11/2025



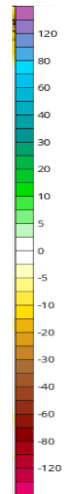
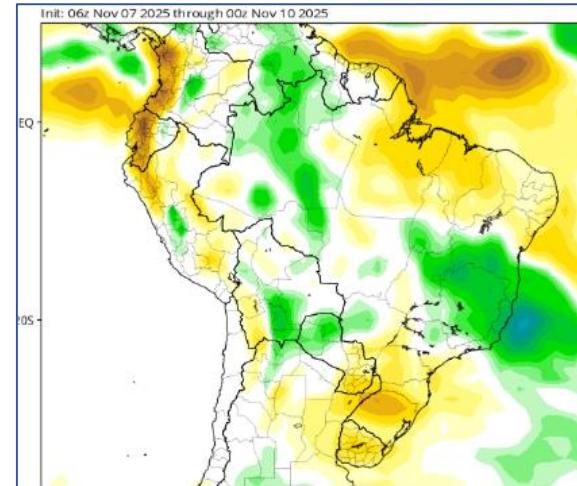
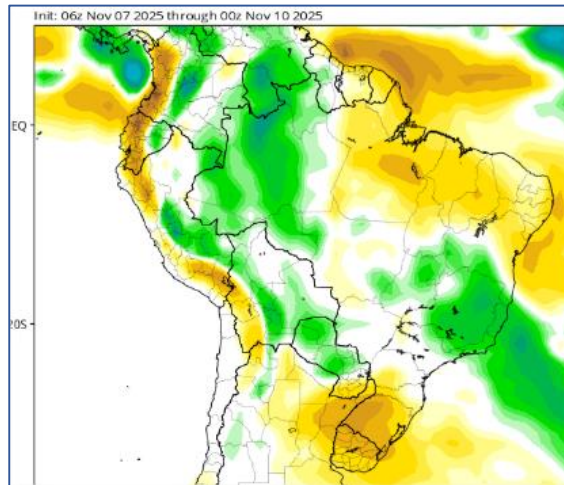
Modelo GEFS/NOAA

Anomalia de Chuva 3a e 4a semanas

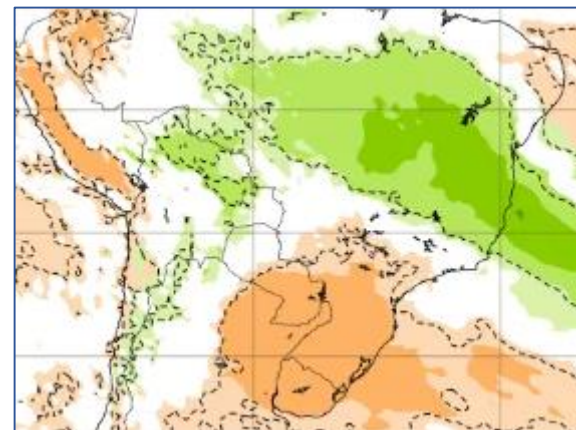
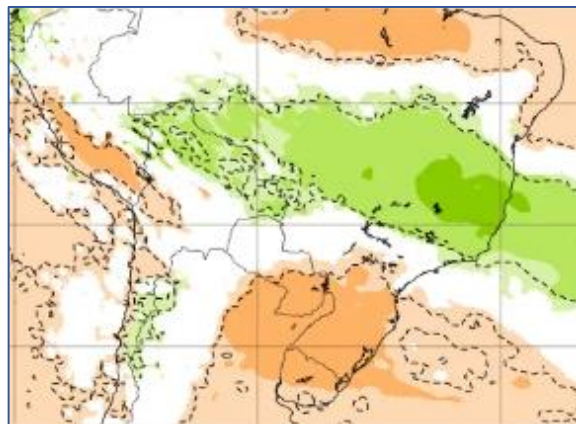
24 Nov- 01 Dez

01-08 Dez

CFS/NOAA

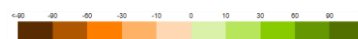


ECMWF



24 Nov- 01 Dez

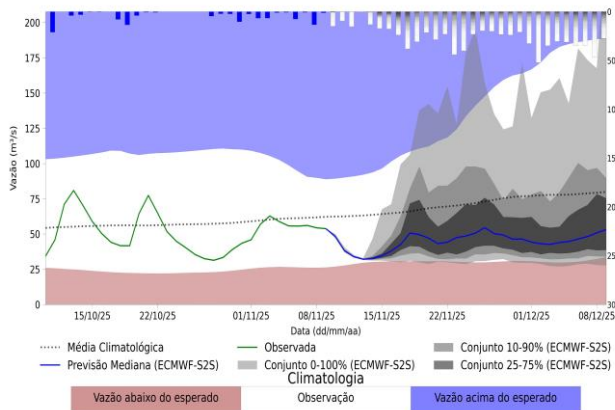
01-08 Dez



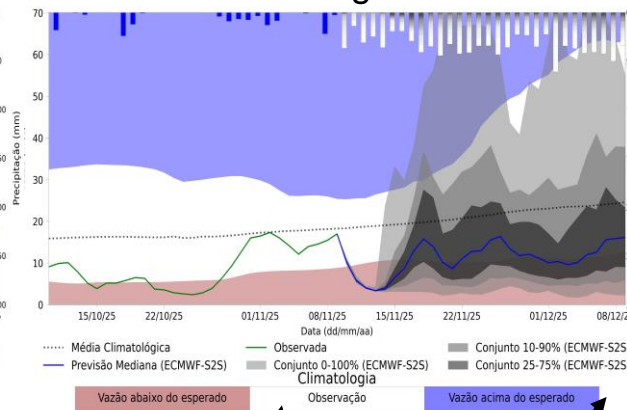
Previsão de vazão natural na Bacia Rio Paraíba do Sul

Previsão: 09/11/2025 a 09/12/2025

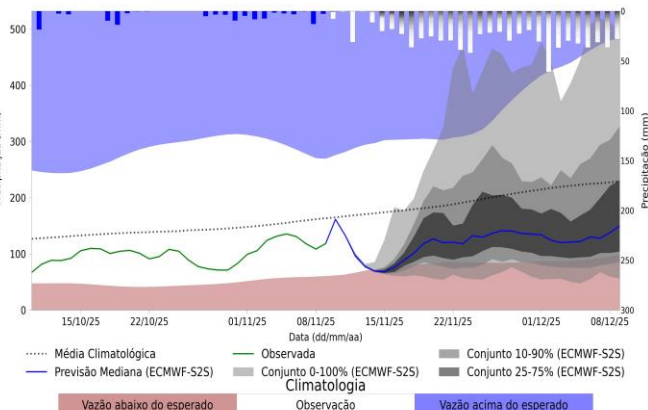
UHE Santa Branca



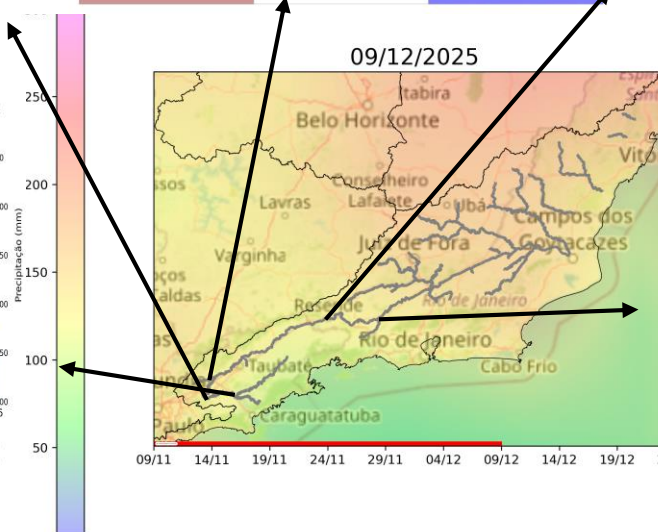
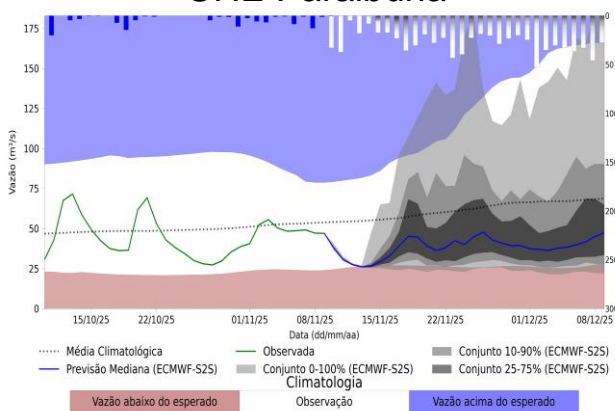
UHE Jaguari



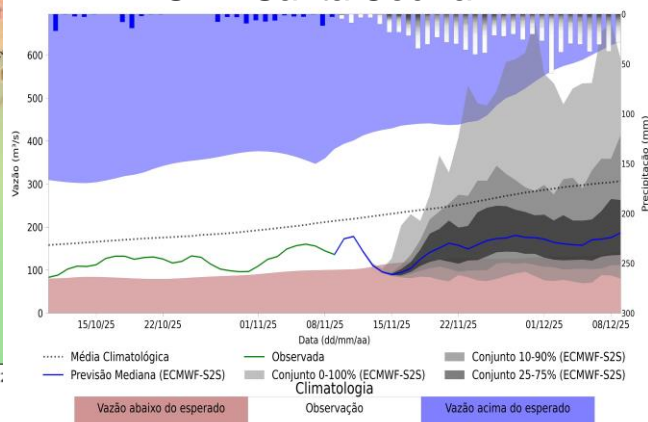
UHE Funil



UHE Paraibuna



UHE Santa Cecília

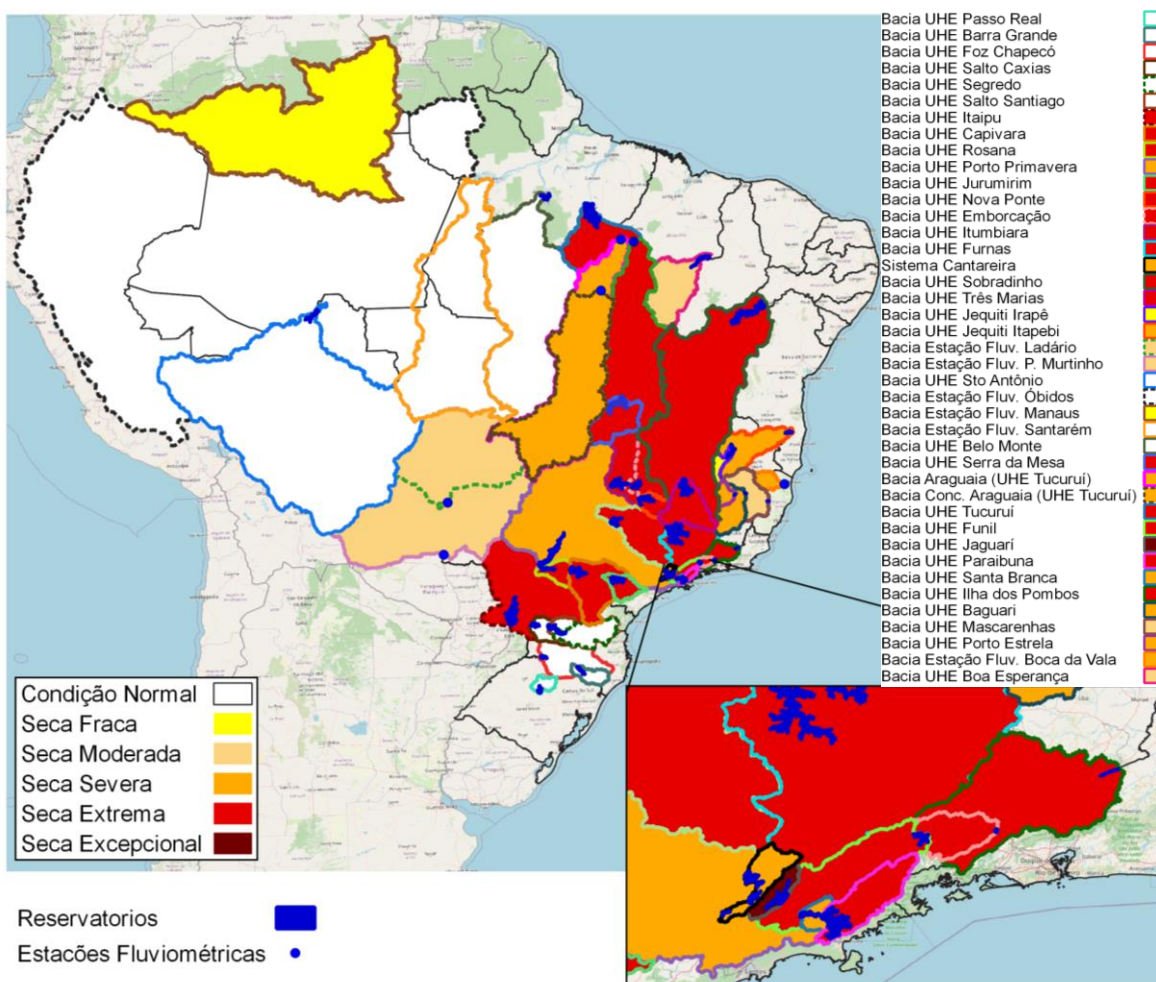


Fonte: Meteorologia (INMET/MERGE); Vazão (ANA/ONS); **MLT:** 1993-2024; **Previsão Meteorológica:** ECMWF-S2S

Índice de Seca Bivariado (Chuva-Vazão) - TSI

(Two-variate Standardized Index – Escala de 6 meses)

Previsão Próximos 30 dias



Estabilidade da seca:

- Jaguarí (Excepcional)
- Paraibuna (Extrema)
- Funil (Extrema)
- Santa Cecília (Extrema)

Desintensificação da seca:

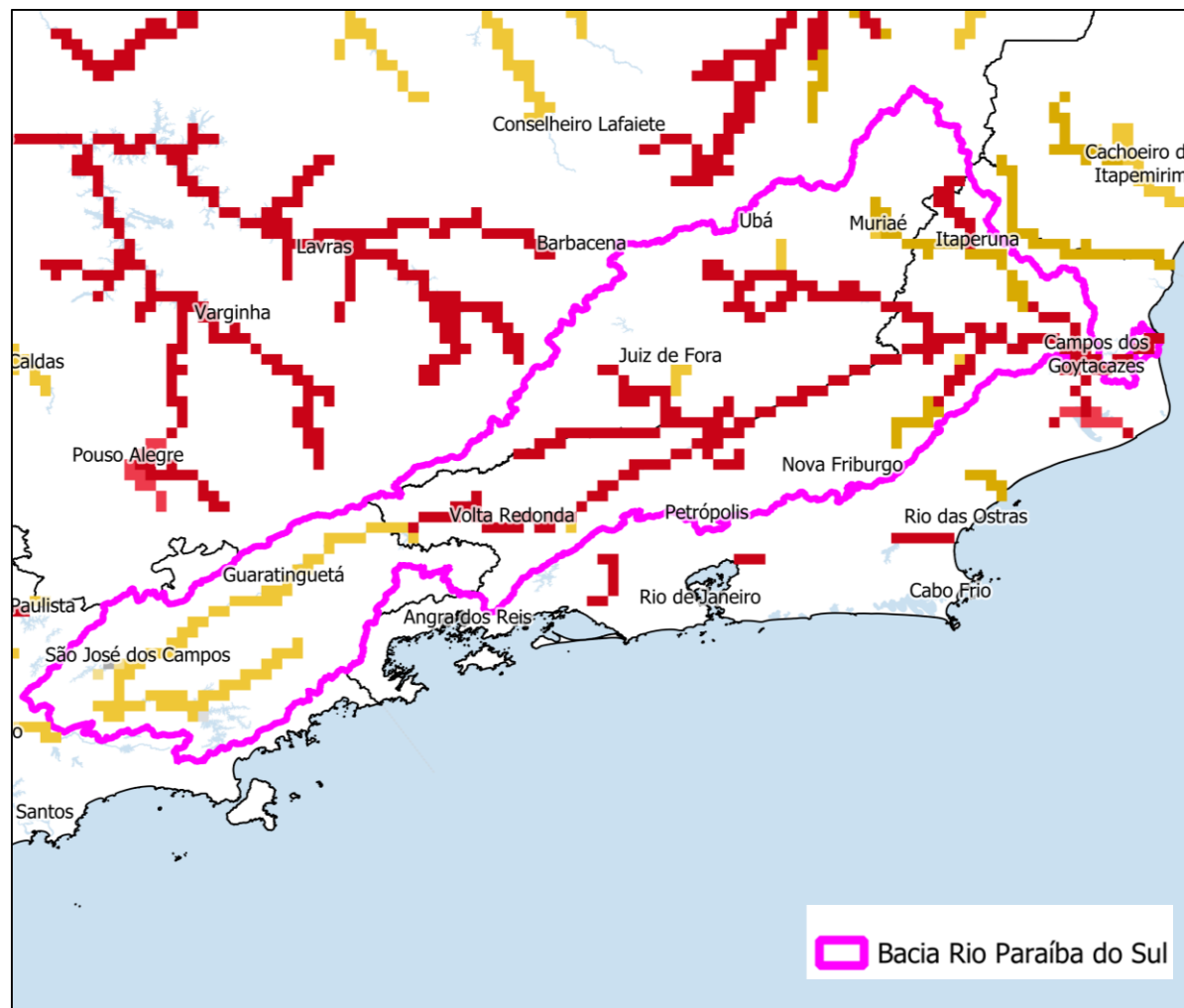
- Santa Branca (Ext. -> Sev.)
- Ilha dos Pombos (Excep. -> Ext.)

Fonte: CEMADEN/MCTI

Previsão de Precipitação: *Climate Forecast System (CFS)*

Previsão Sub-sazonal (45 dias) para a Bacia do Paraíba do Sul (Sistema Global de Previsão de Vazão - GloFAS)

Previsão: 11/11/2025 – 22/12/2025



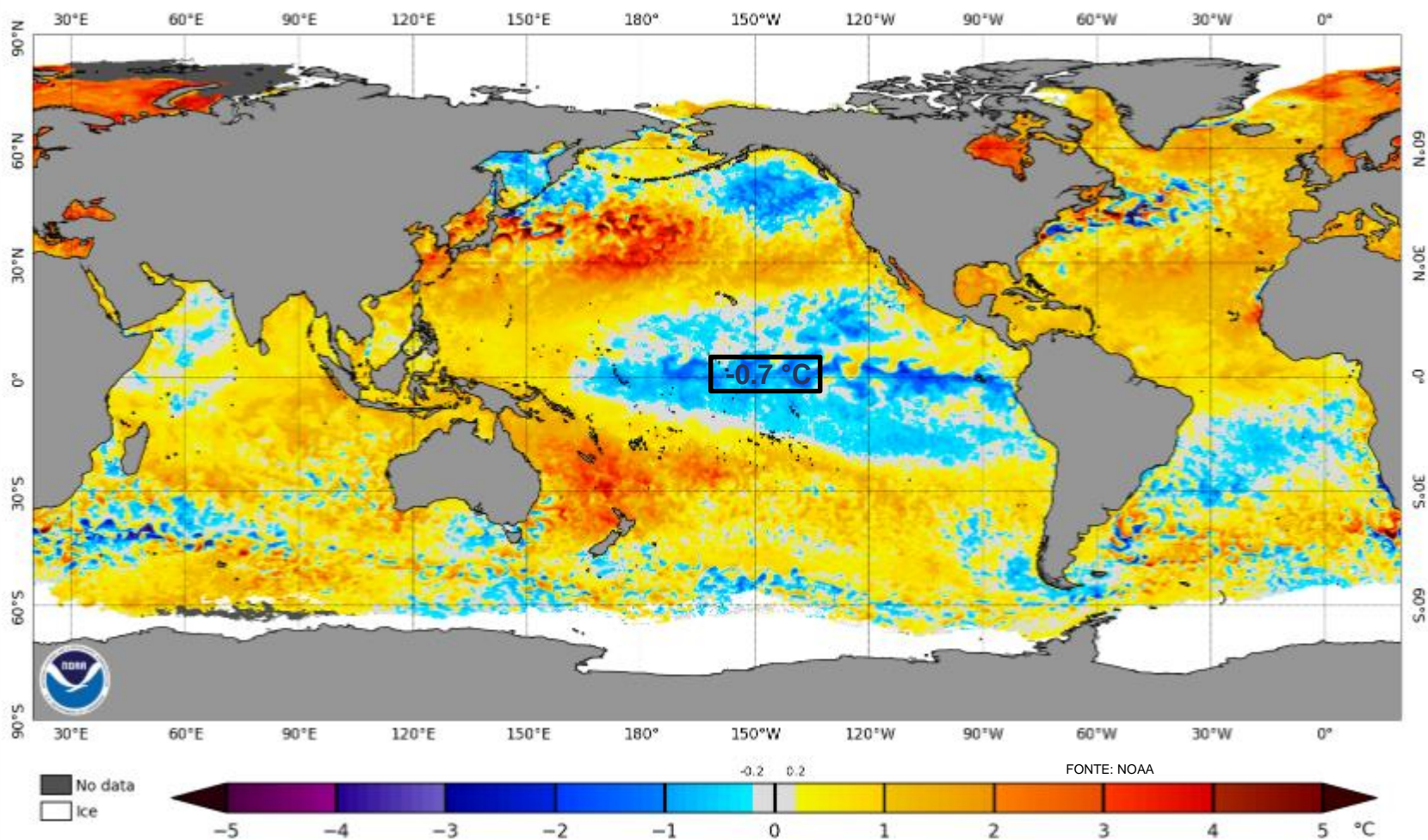
Categoria de anomalia para as vazões (percentil)



Fonte: Previsão Meteorológica: ECMWF
Previsão de vazão: Lisflood/GloFAS Forecast
<https://www.globalfloods.eu/glofas-forecasting/>

Status Atual: **La Niña**

NOAA Coral Reef Watch Daily 5km SST Anomalies (v3.1) 9 Nov 2025



Previsão do “ENSO”

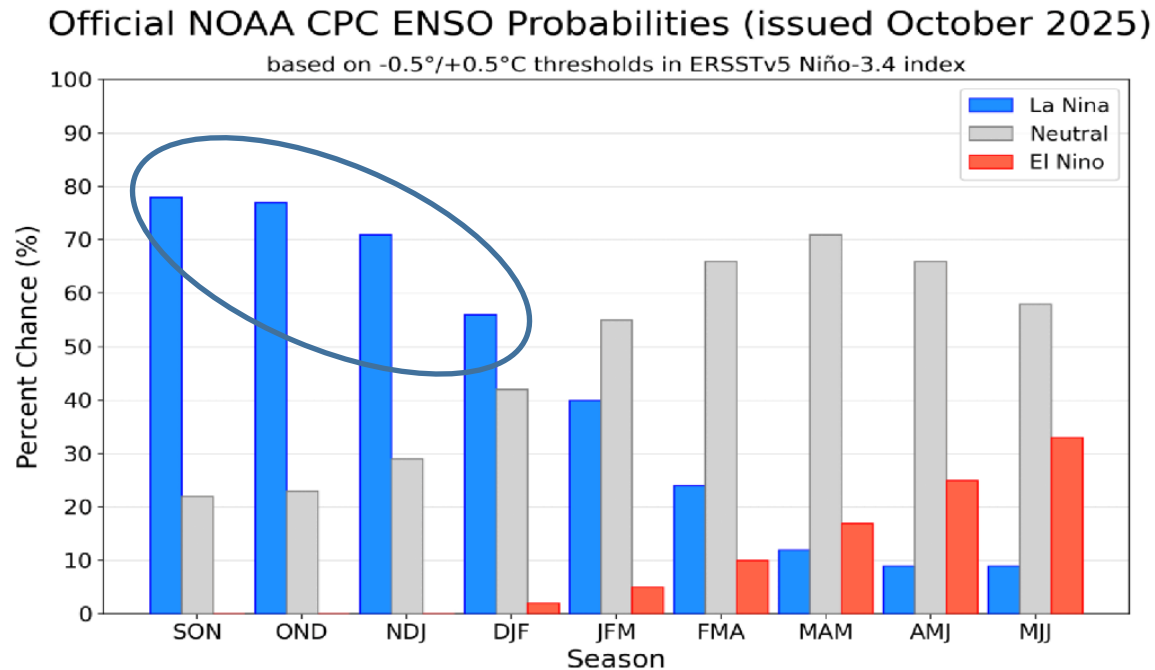
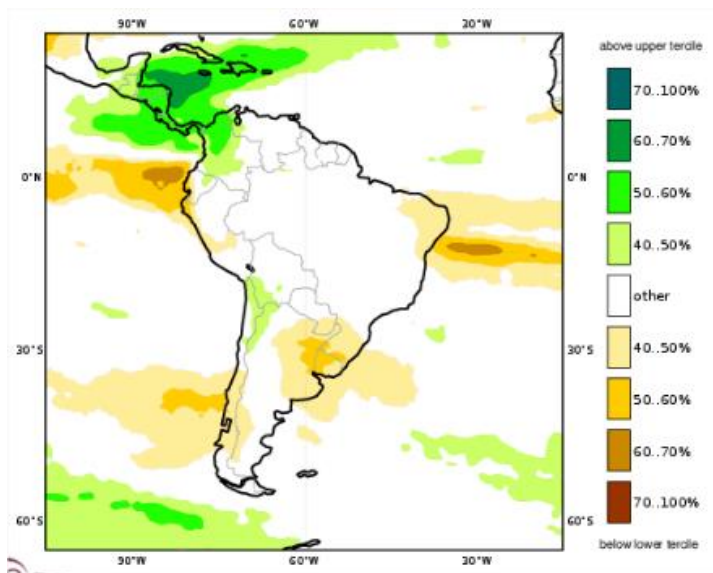


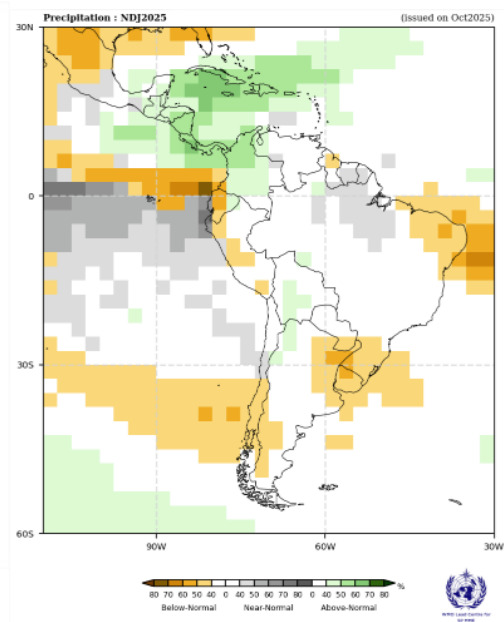
Figure 7. Official ENSO probabilities for the Niño 3.4 sea surface temperature index (5°N - 5°S , 120°W - 170°W). Figure updated 9 October 2025.

Previsão Sazonal de Chuva Multi-Modelo

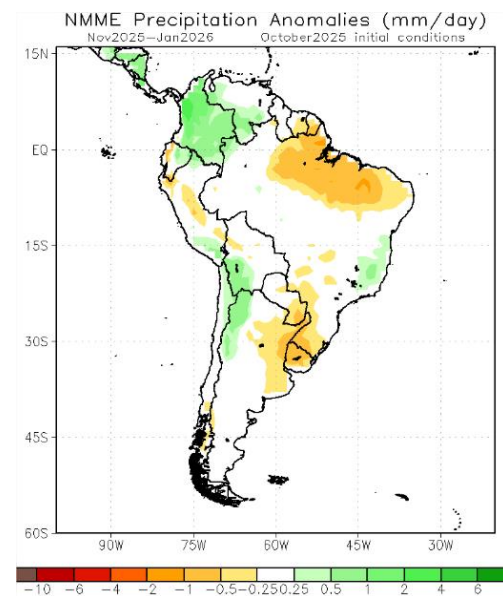
Novembro-Dezembro-Janeiro



Modelos “Europeus”



Modelos da WMO



Modelos Norte Americanos

Previsão Sazonal de Chuva Multi-Modelo

Dezembro-Janeiro-Fevereiro

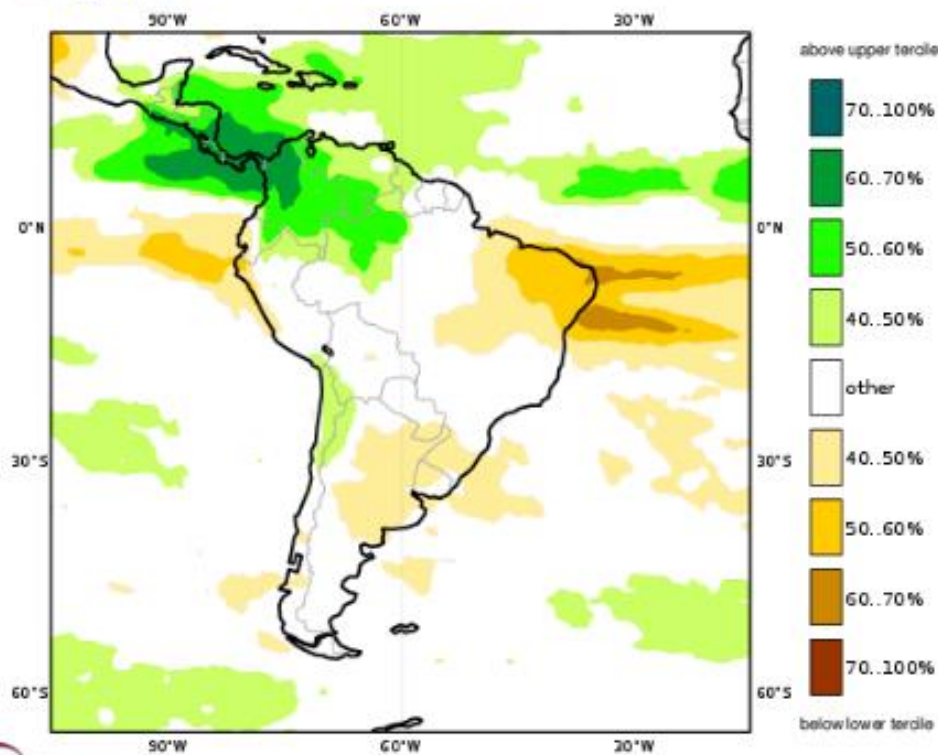
C3S multi-system seasonal forecast

Prob(most likely category of precipitation)

Nominal forecast start: 01/11/25

Unweighted mean

DJF 2025/26



NMME Precipitation Anomalies (mm/day)

Dec2025–Feb2026

November2025 initial conditions

