



CEMADEN

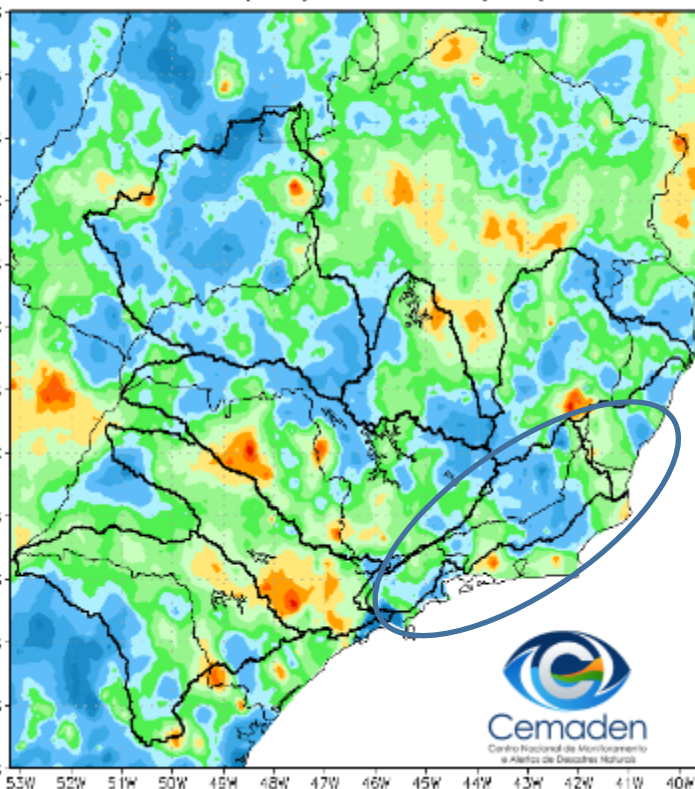
**Centro Nacional de Monitoramento e
Alertas de Desastres Naturais**

Monitoramento e Previsões de Chuva para a Bacia do Rio Paraíba do Sul

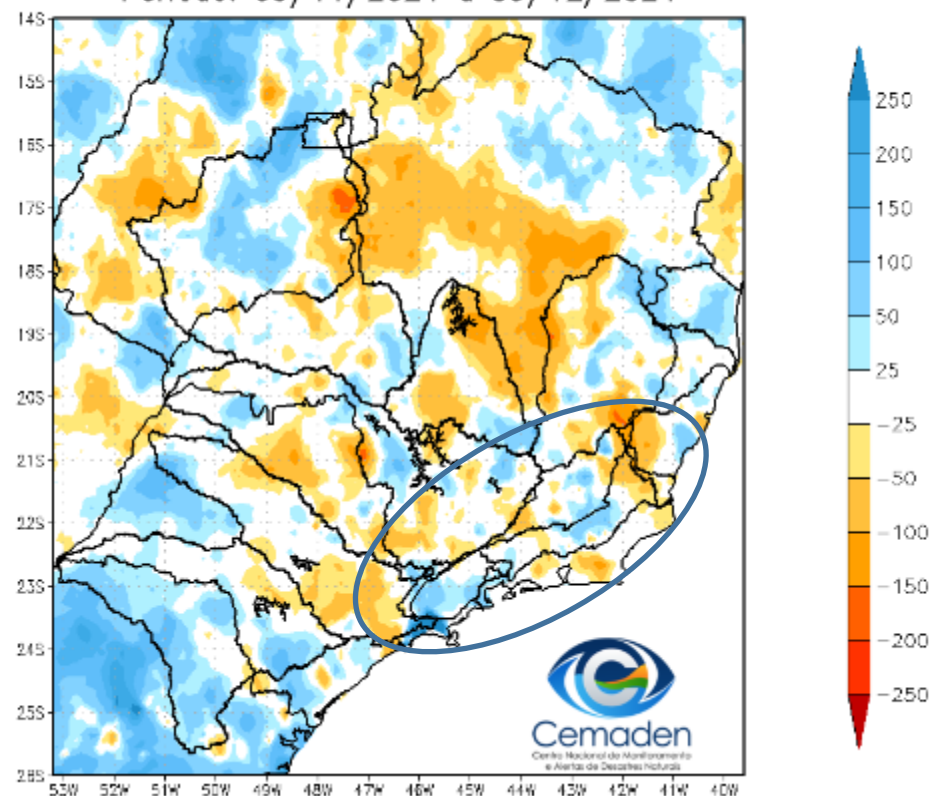
10 de Dezembro de 2024

Precipitação acumulada nos últimos 30 dias

Precipitação Acumulada (mm) A.S.
Período: 09/11/2024 a 09/12/2024

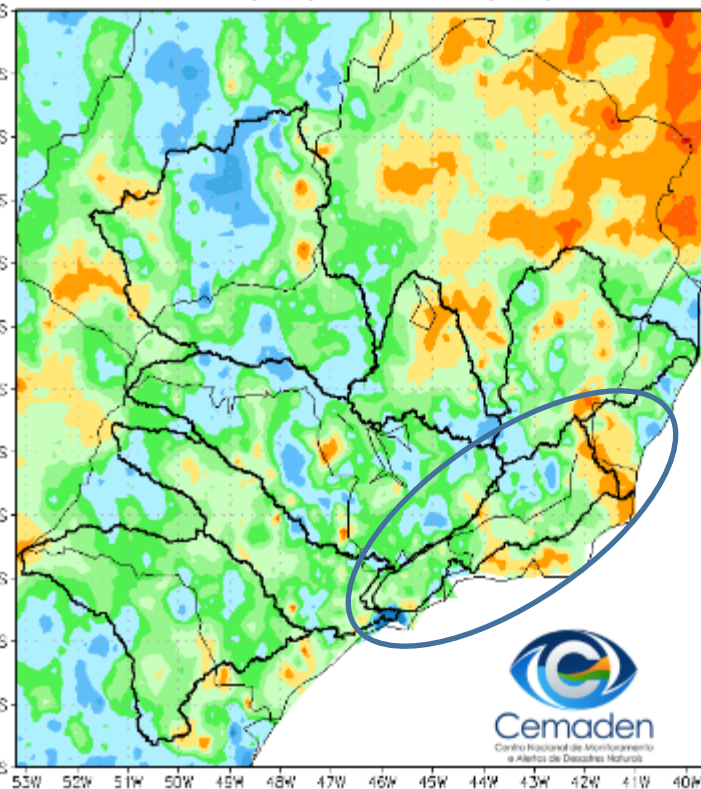


Anomalia de Precipitação (mm) A.S.
Período: 09/11/2024 a 09/12/2024

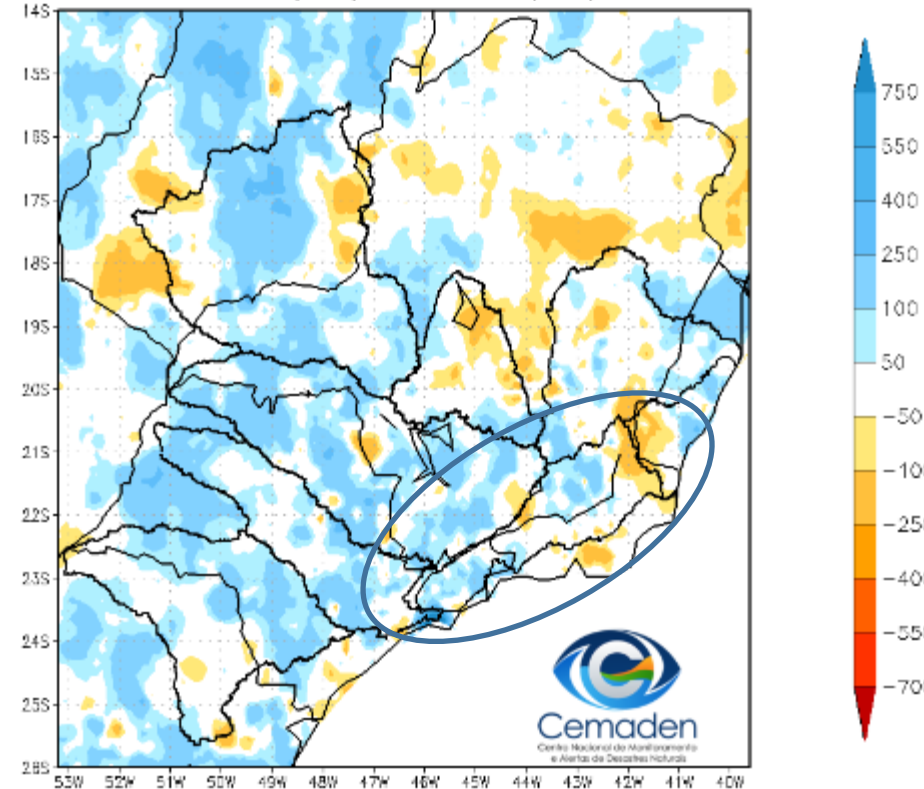


Precipitação acumulada no ano hidrológico

Precipitação Acumulada (mm) A.S.
Período: 01/10/2024 a 09/12/2024

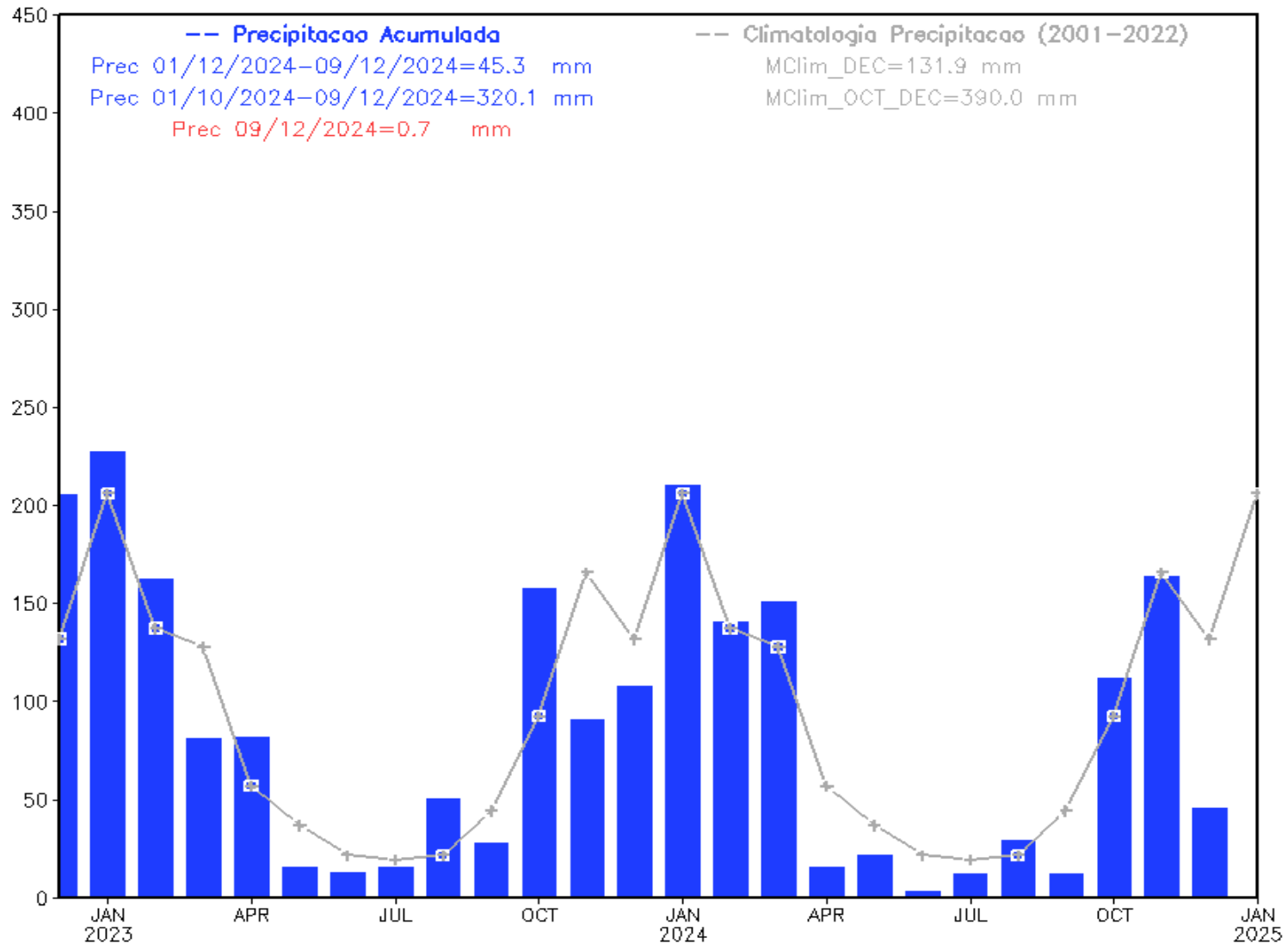


Anomalia de Precipitação (mm) A.S.
Período: 01/10/2024 a 09/12/2024

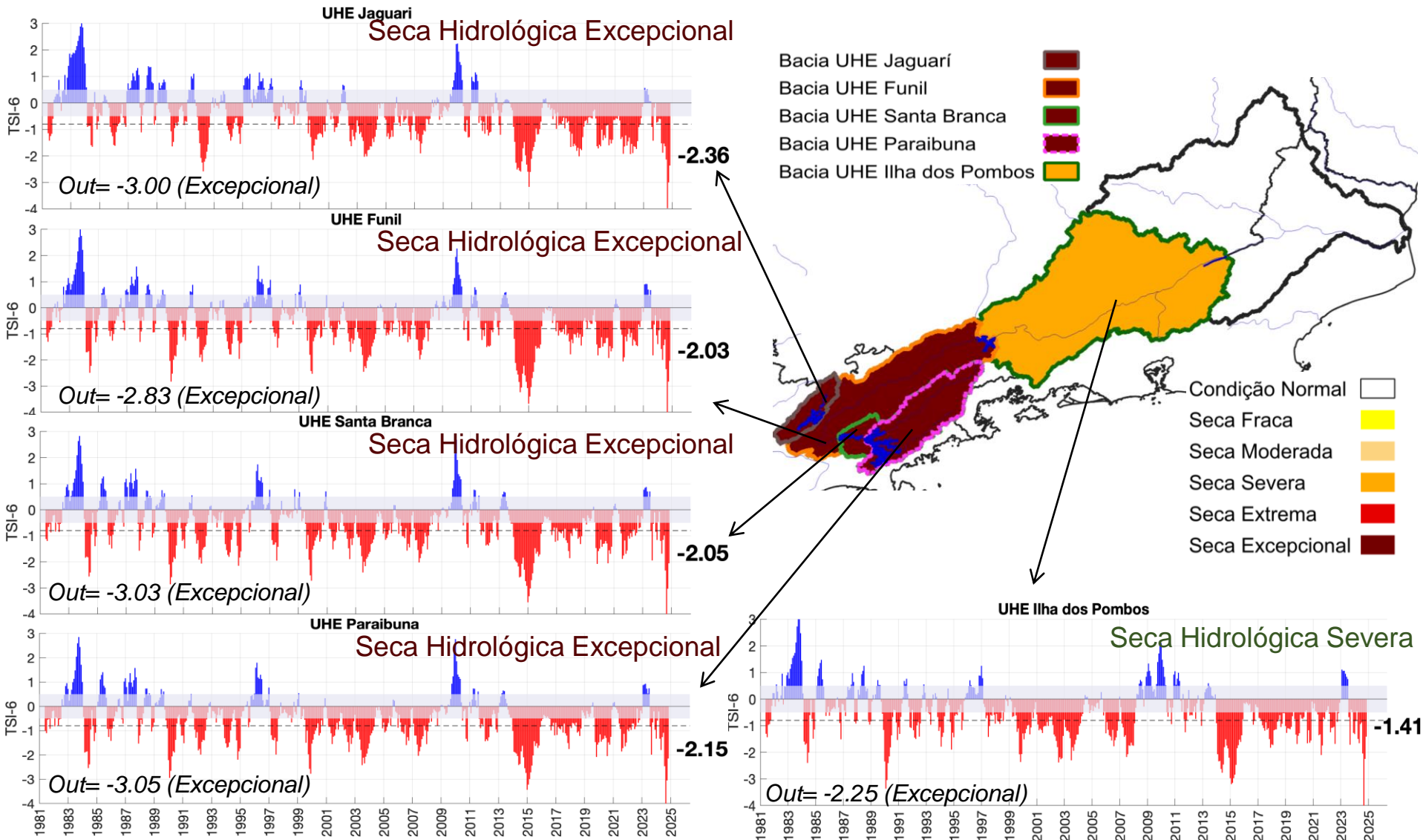


Precipitação nos últimos 2 anos

Precipitacao Bacia do Rio Paraiba_Sul desde DEC 2022

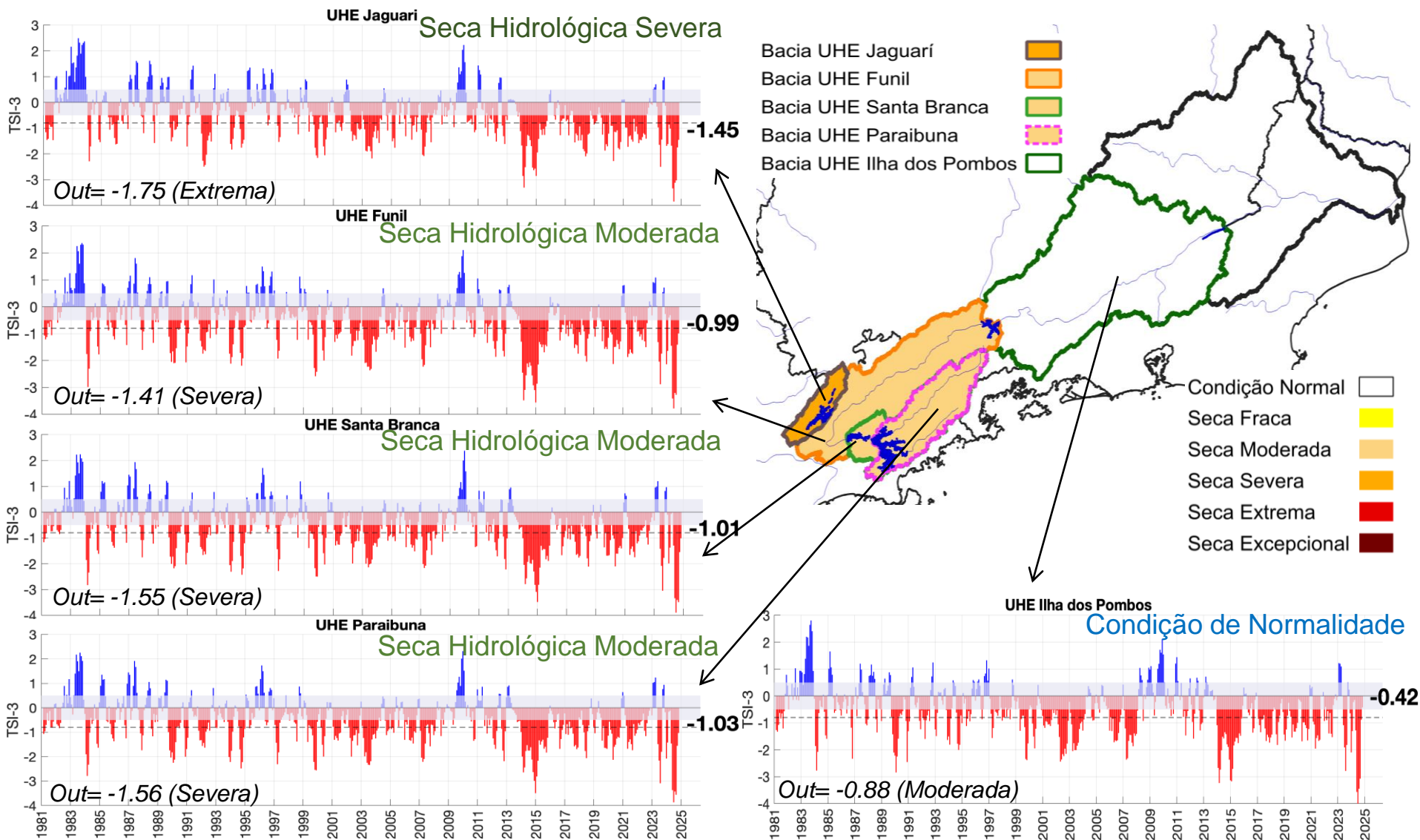


Índice Padronizado Bivariado (Chuva-Vazão) - TSI6



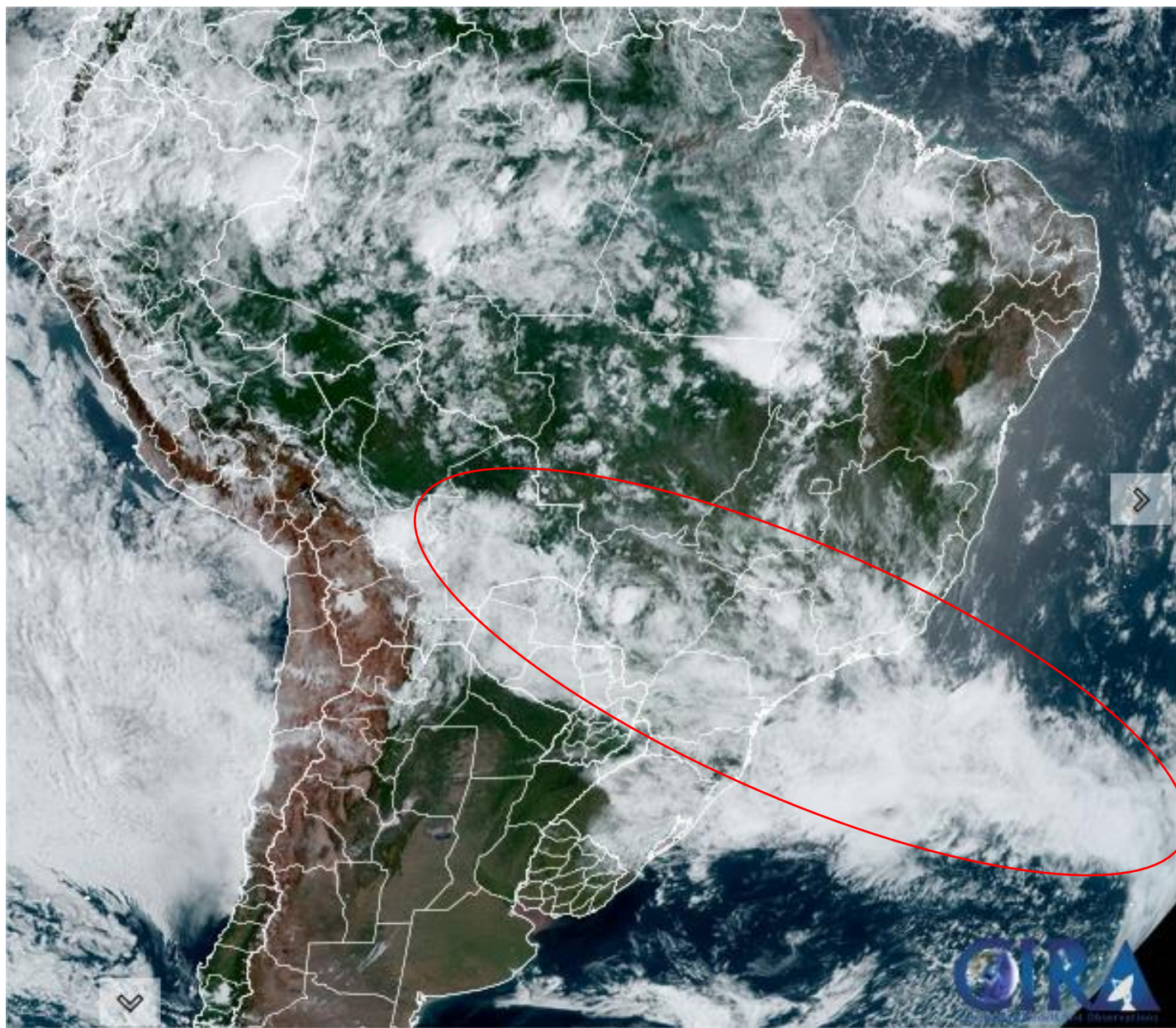
Fonte dos dados: Precipitação (Cemaden/INMET) e Vazão (ONS/ANA) - Jan/1981-Nov/2024. Estimativa TSI e Gráficos: CEMADEN

Índice Padronizado Bivariado (Chuva-Vazão) - TSI³

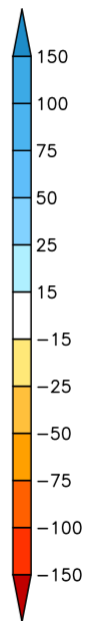
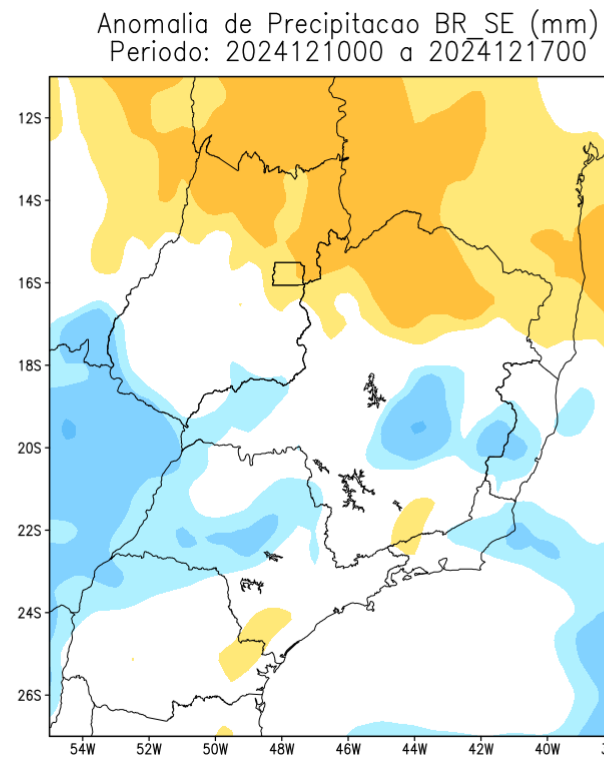
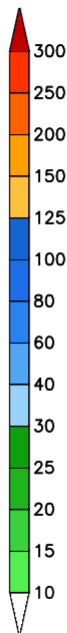
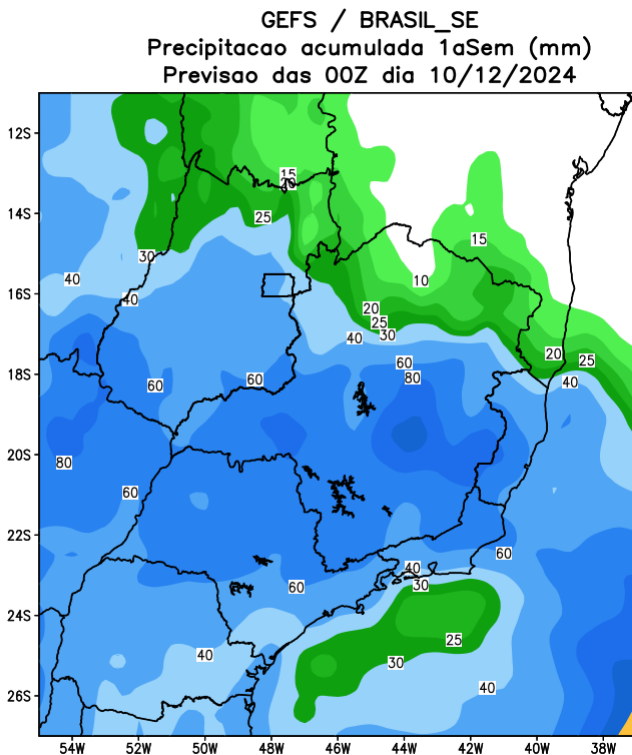


Fonte dos dados: Precipitação (Cemaden/INMET) e Vazão (ONS/ANA) - Jan/1981-Nov/2024. Estimativa TSI e Gráficos: CEMADEN

Situação meteorológica atual

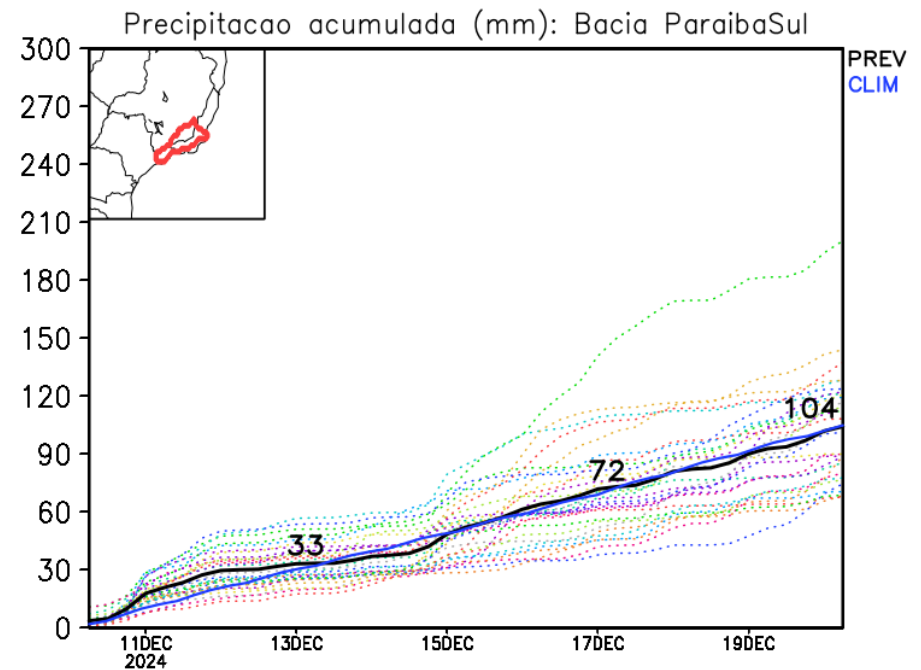
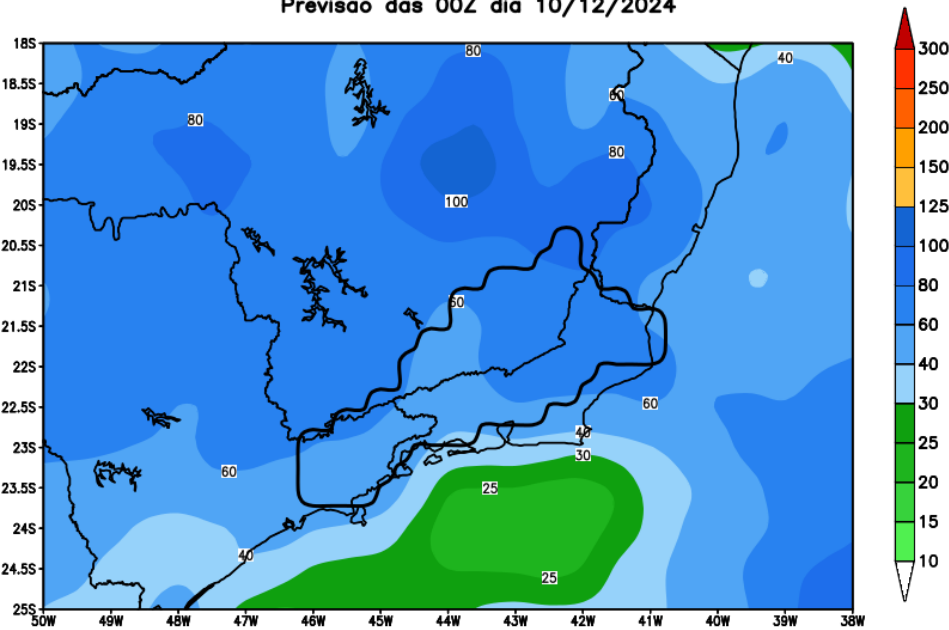


Previsão de chuva para os próximos 7 dias



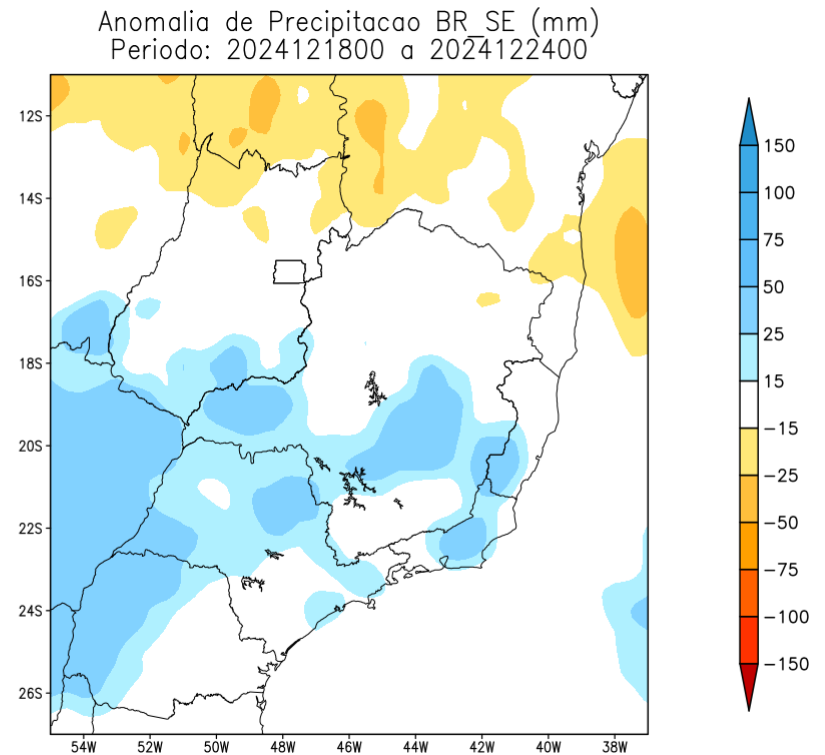
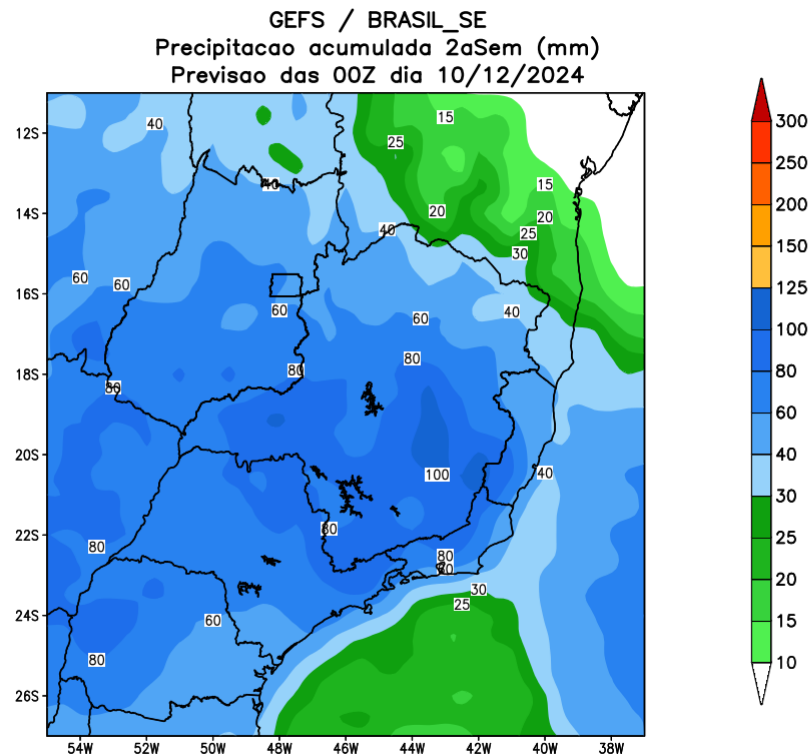
Rio Paraíba do Sul

GEFS / Bacia do Rio Paraíba do Sul
Precipitação acumulada em 7 dias (mm)
Previsão das 00Z dia 10/12/2024



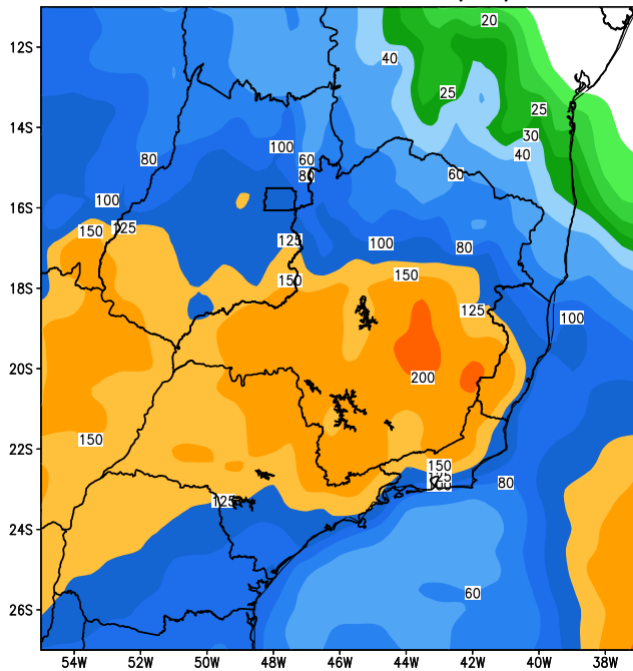
Modelo GEFS/NOAA

Tendência para a 2a semana

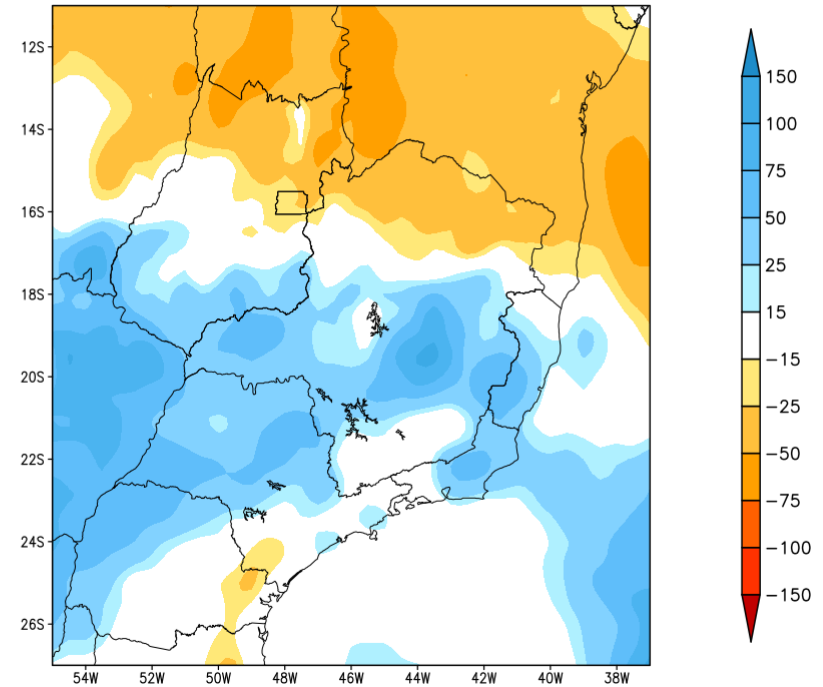


Tendência para as próximas duas semanas

GEFS / BRASIL_SE
Precipitacao acumulada 14dias (mm)
Previsao das 00Z dia 10/12/2024

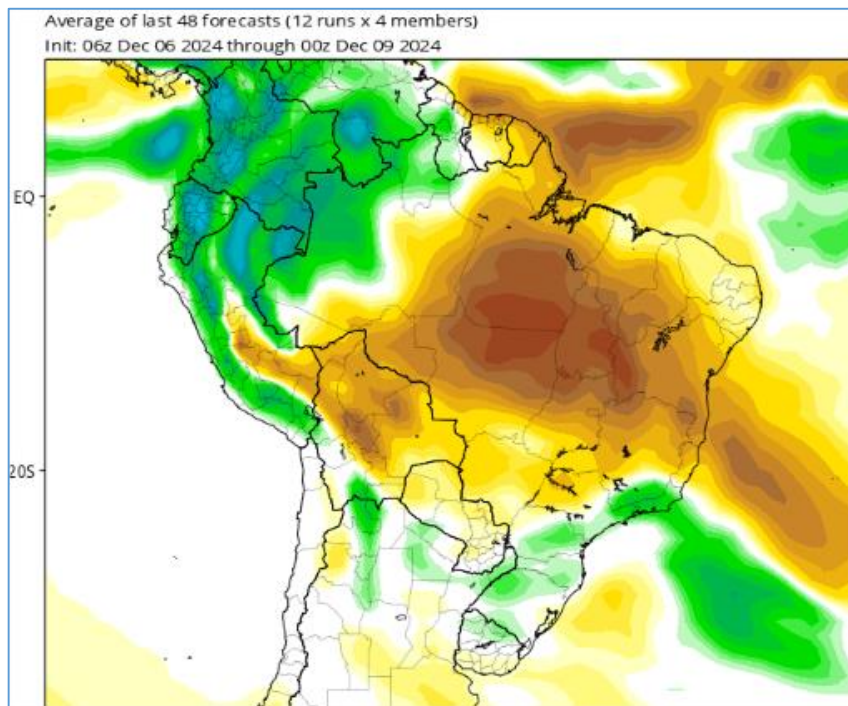


Anomalia de Precipitacao BR SE (mm)
Periodo: 2024121000 a 2024122400

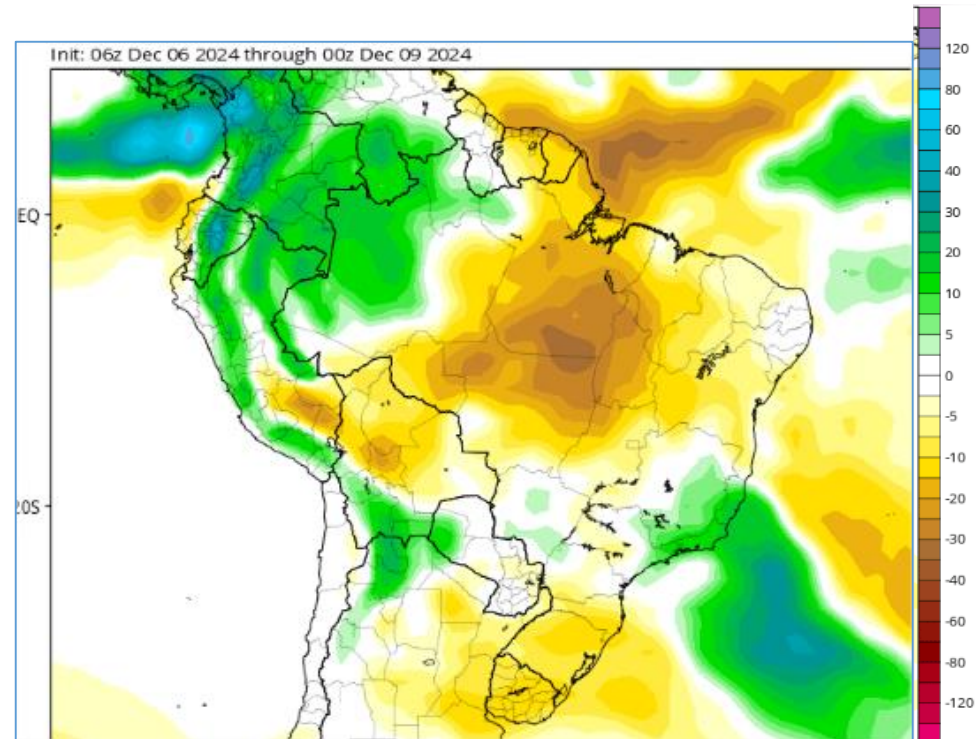


Tendência 3a e 4a semanas

23-30 Dez



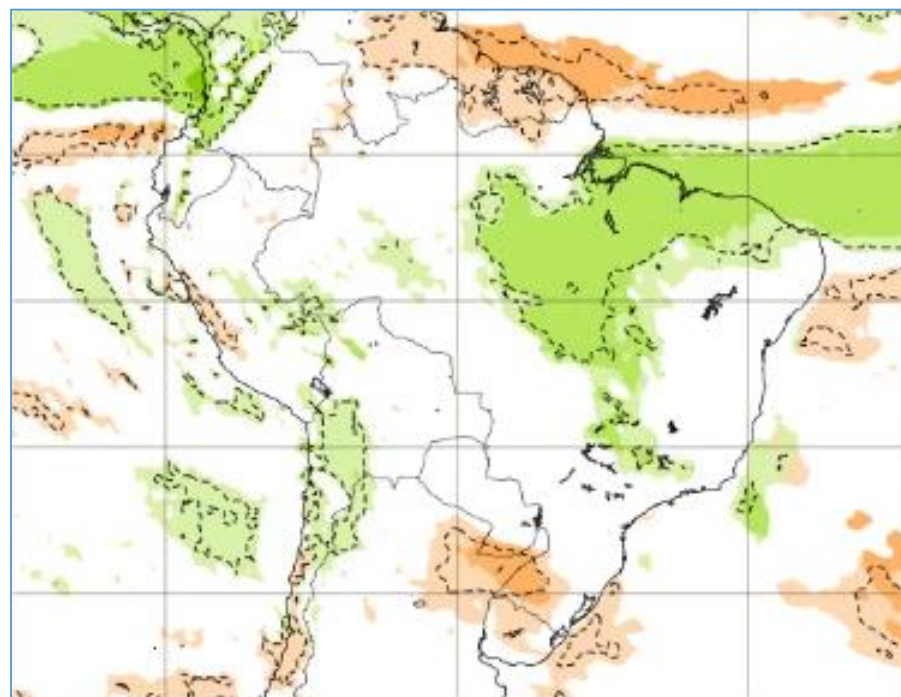
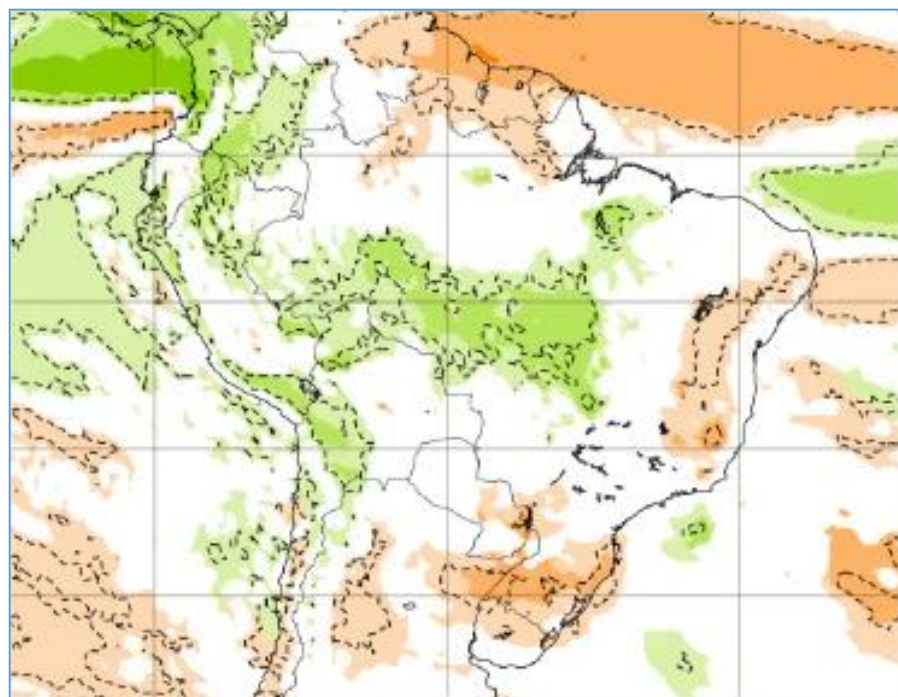
30 Dez-06 Jan



Tendência para 3ª e 4ª semanas

23-30 Dez

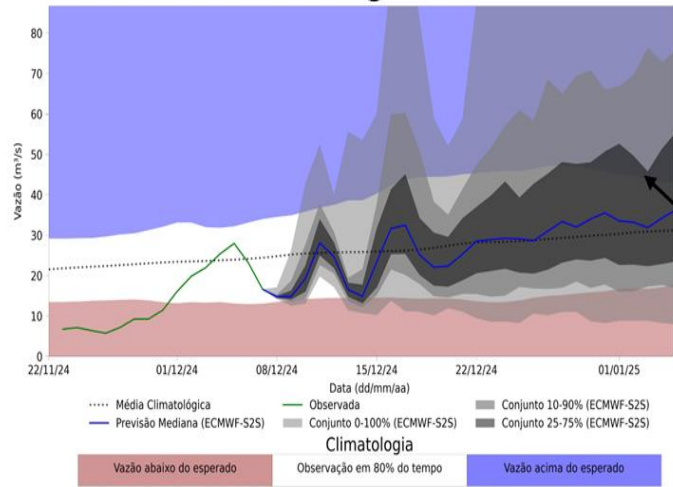
30 Dez- 06 Jan



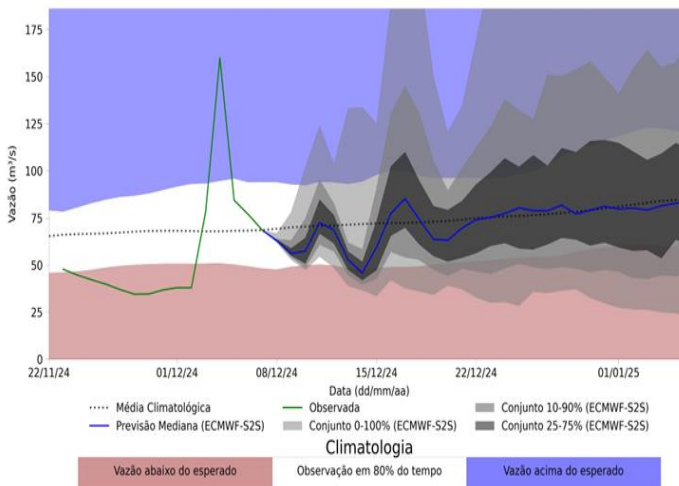
Previsão de vazão natural na Bacia Rio Paraíba do Sul: 30 dias (Modelo hidrológico Distribuído - MHD)

Previsão: 07/12/24 a 06/01/2025

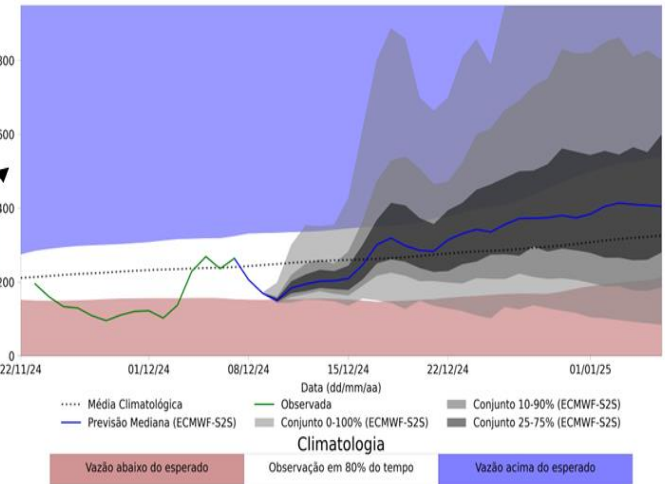
UHE Jaguari



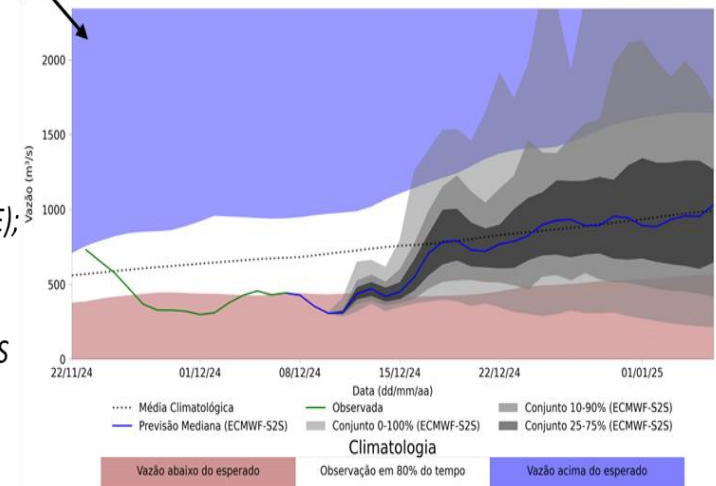
UHE Paraibuna



UHE Funil



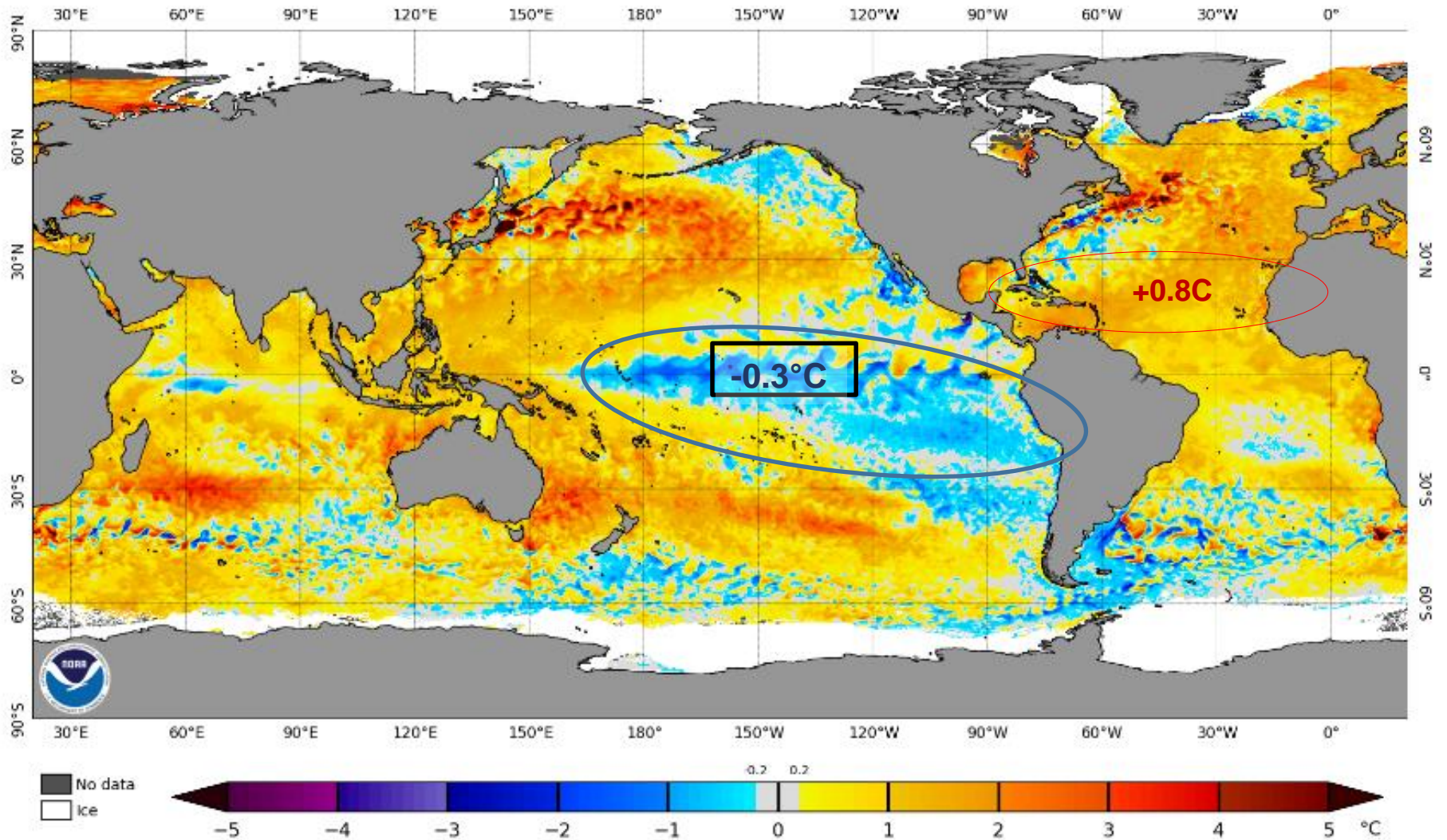
UHE Ilha dos Pombos



Fonte: Meteorologia (INMET/MERGE);
Vazão (ANA/ONS)
MLT: 2003-2023
Previsão Meteorológica: ECMWF-S2S

Status Atual: **La Niña Watch**

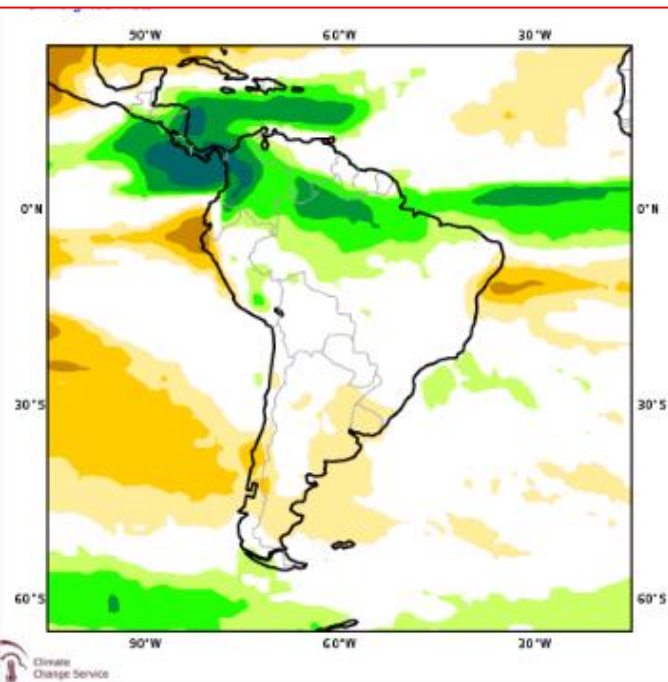
NOAA Coral Reef Watch Daily 5km SST Anomalies (v3.1) 8 Dec 2024



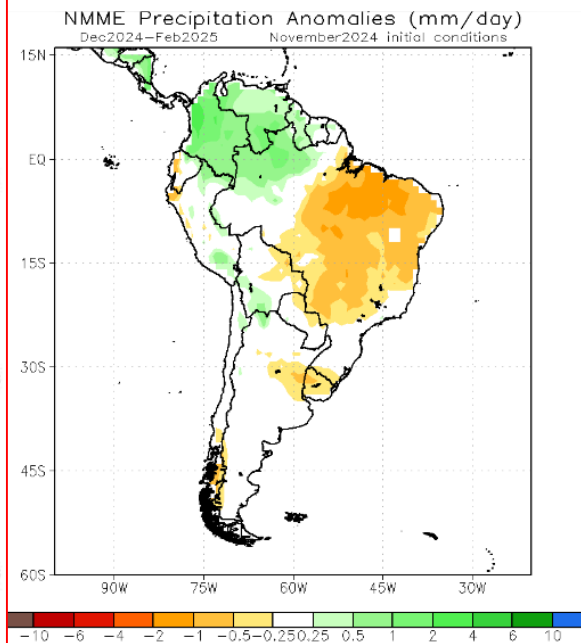
Previsão Sazonal de Chuva Multi-Modelo

Dezembro-Janeiro-Fevereiro

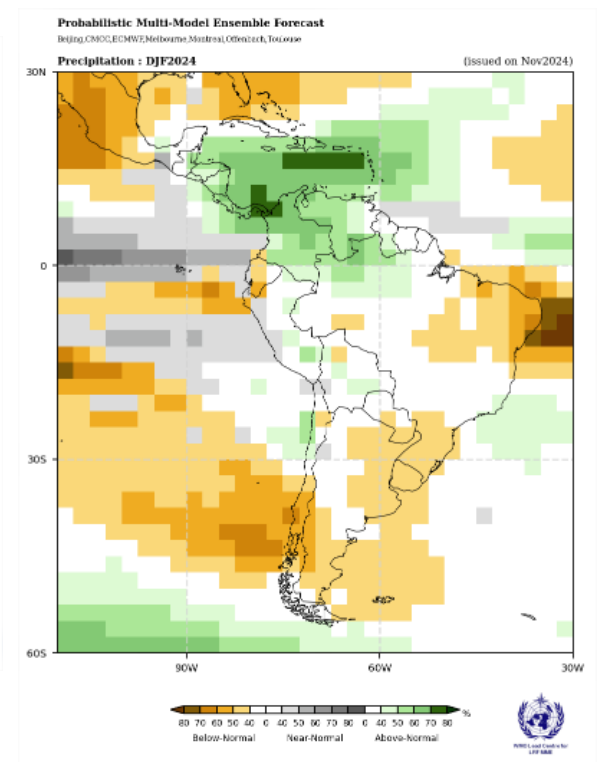
JAN-FEV-MAR



Modelos Europeus



Modelos Norte Americanos



Modelos da WMO