



CEMADEN

**Centro Nacional de Monitoramento e
Alertas de Desastres Naturais**

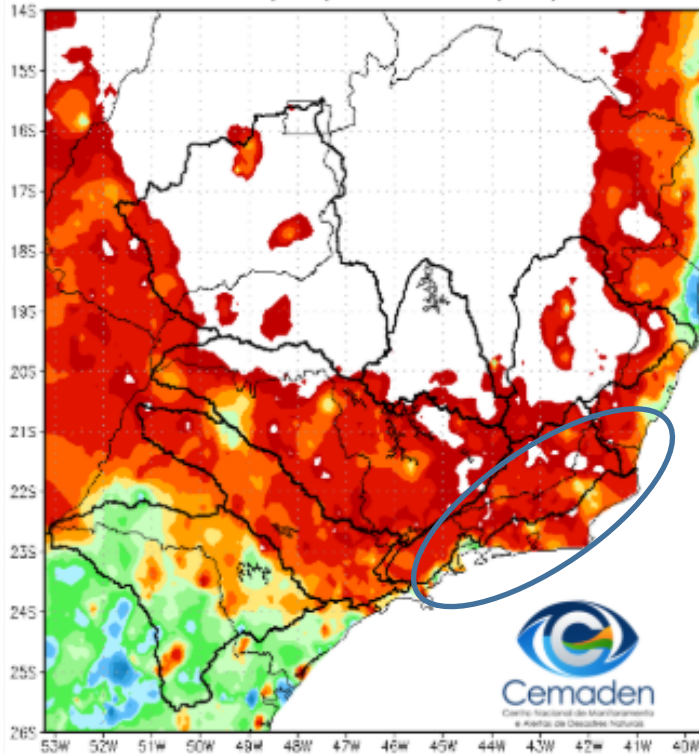
Monitoramento e Previsões de Chuva para a Bacia do Rio Paraíba do Sul

10 de junho de 2025

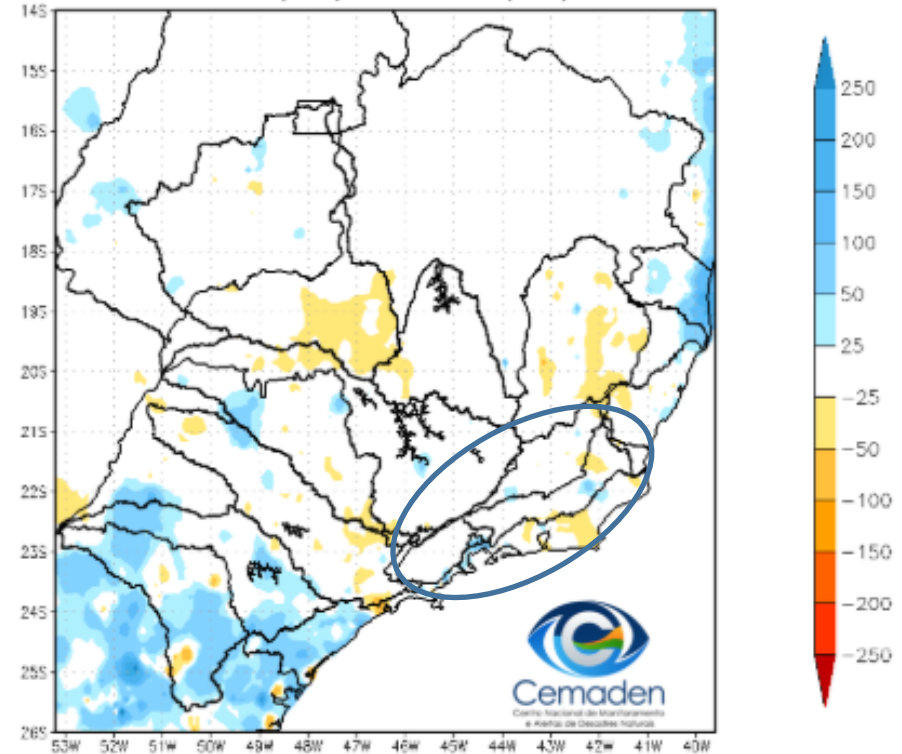


Precipitação acumulada nos últimos 30 dias

Precipitação Acumulada (mm) A.S.
Período: 10/05/2025 a 09/06/2025

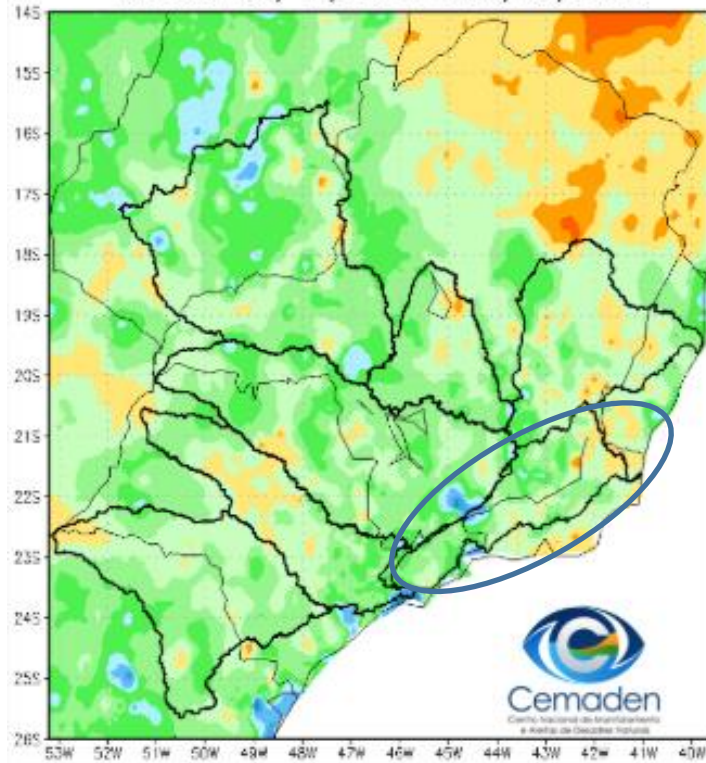


Anomalia de Precipitação (mm) A.S.
Período: 10/05/2025 a 09/06/2025

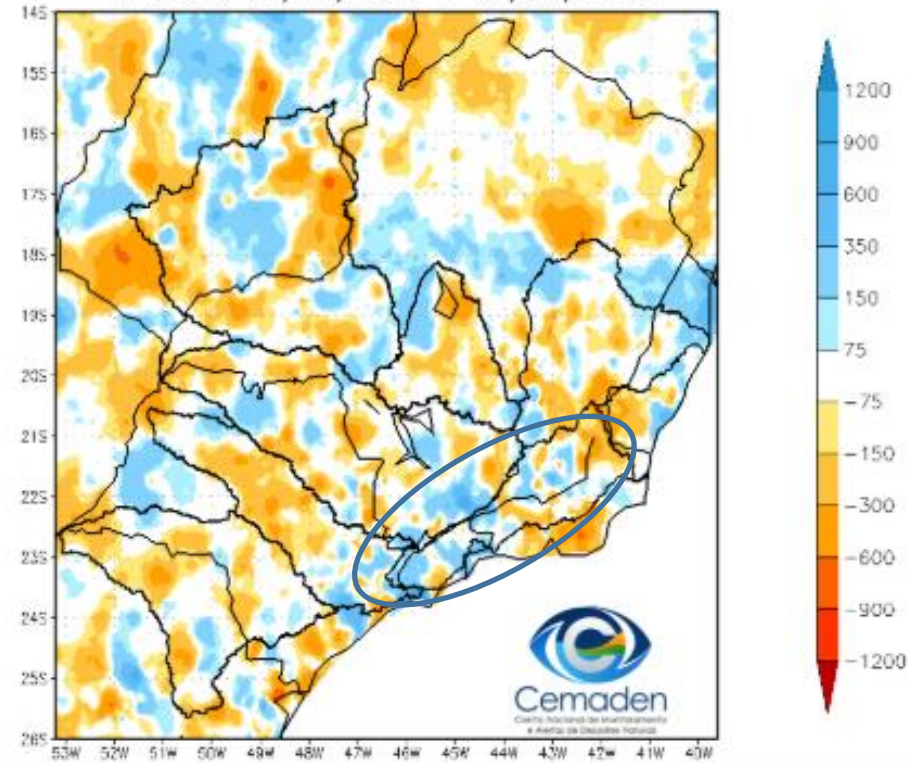


Precipitação acumulada no ano hidrológico

Precipitação Acumulada (mm) A.S.
Período: 01/10/2024 a 09/06/2025

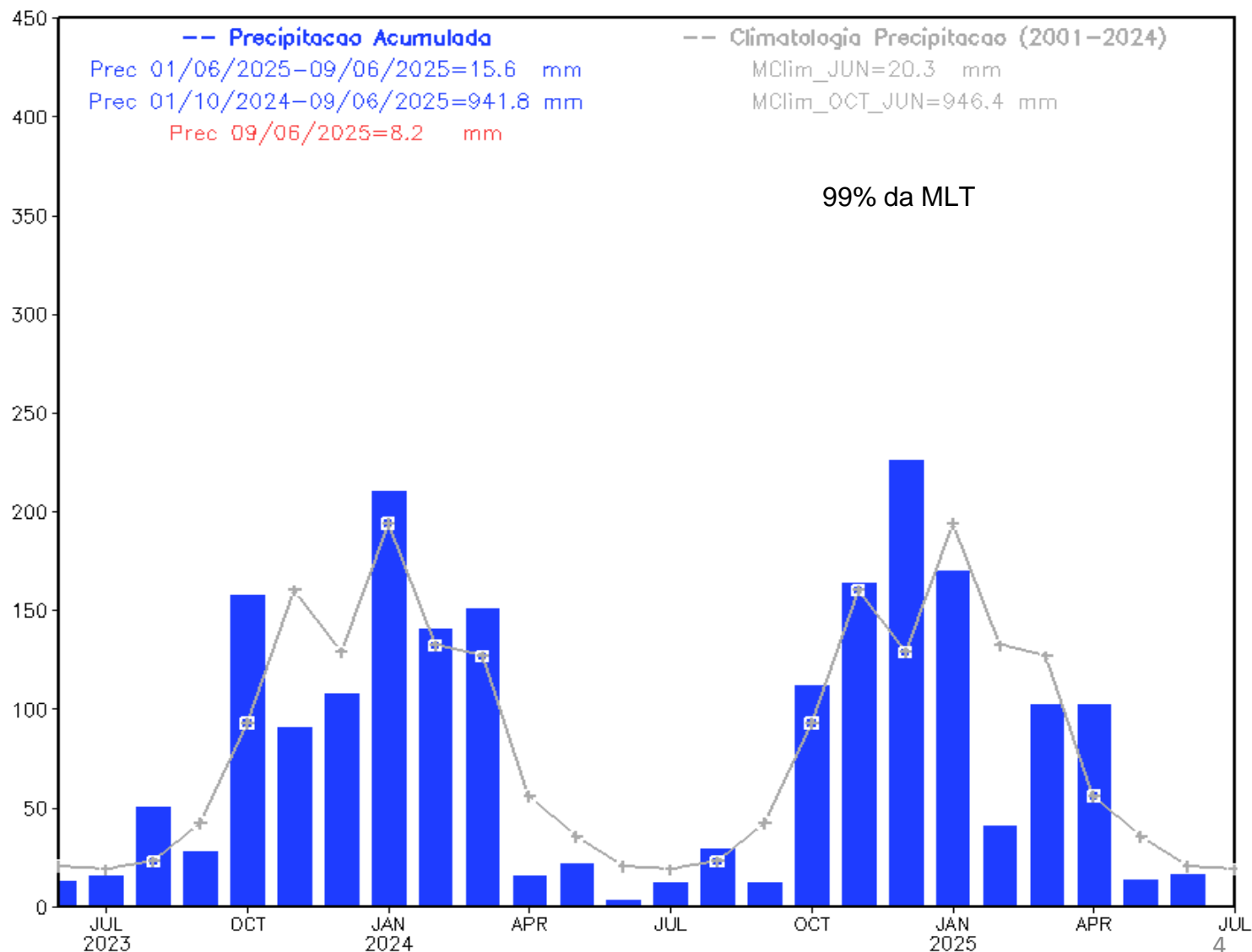


Anomalia de Precipitação (mm) A.S.
Período: 01/10/2024 a 09/06/2025



Evolução Temporal da Precipitação

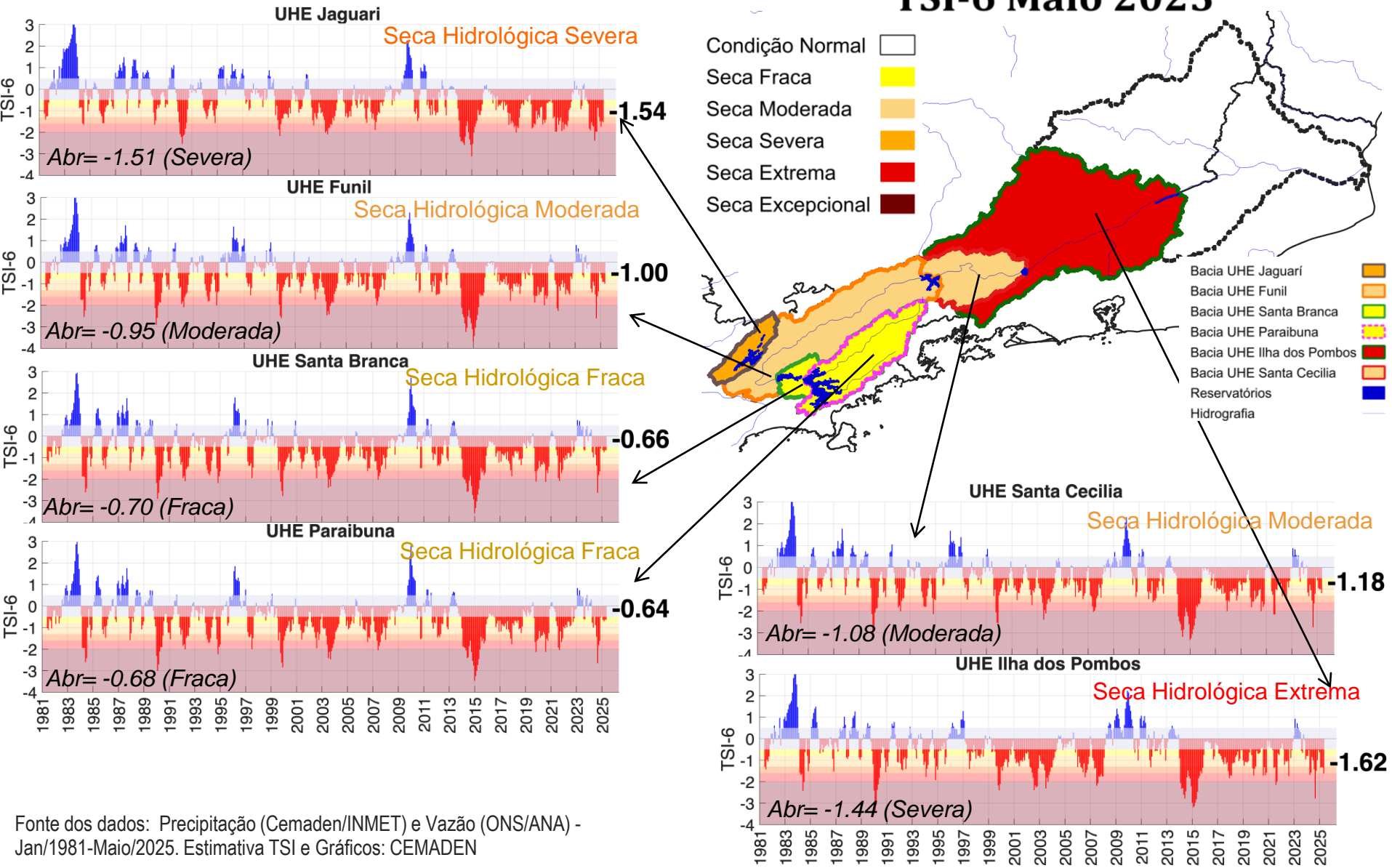
Precipitacao Bacia do Rio Paraiba_Sul desde JUN 2023



Índice de Seca Bivariado (Chuva-Vazão) - TSI

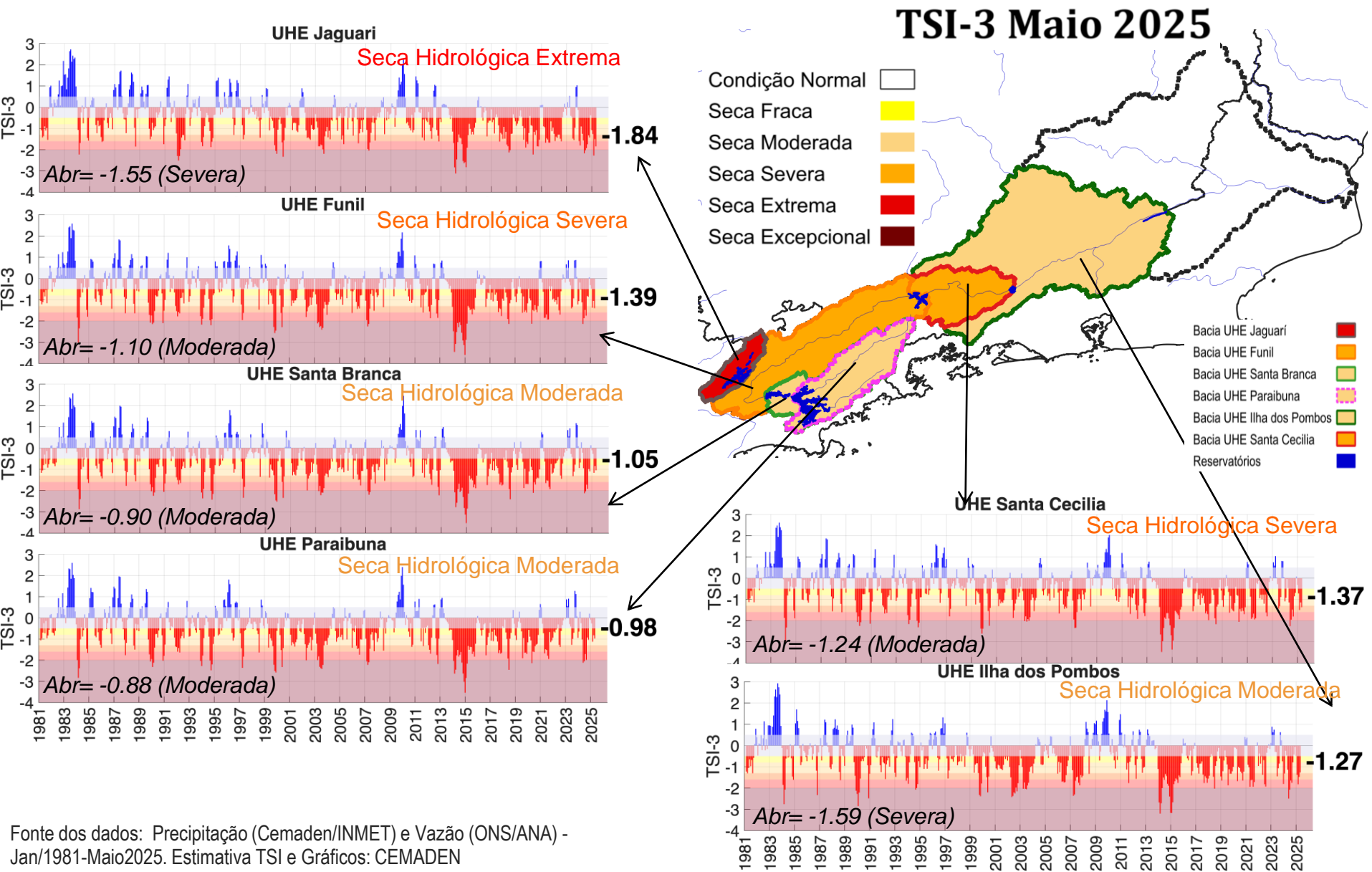
(Two-variate Standardized Index – Escala de 6 meses)

TSI-6 Maio 2025

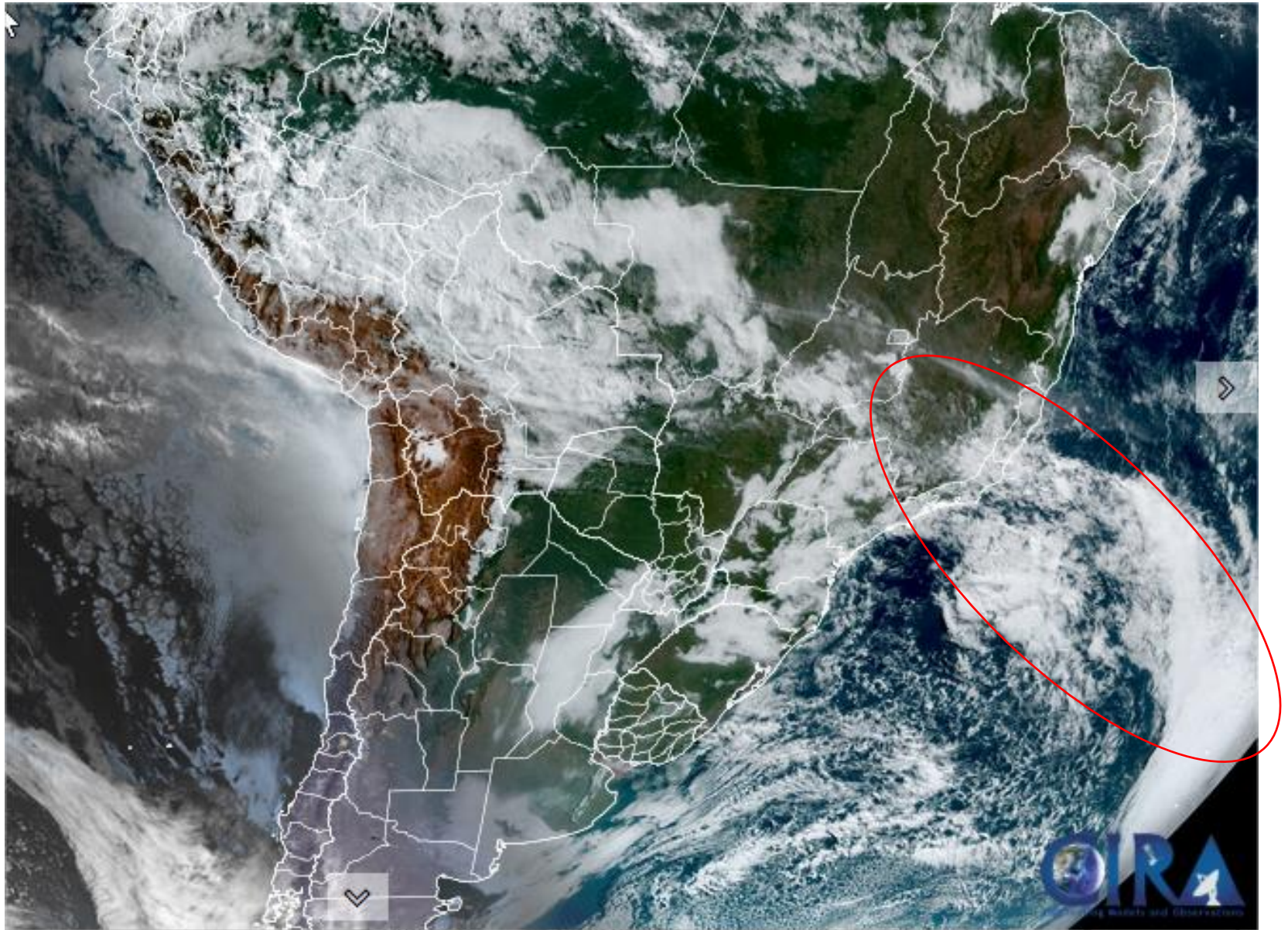


Índice de Seca Bivariado (Chuva-Vazão) - TSI

(Two-variate Standardized Index – Escala de 3 meses)

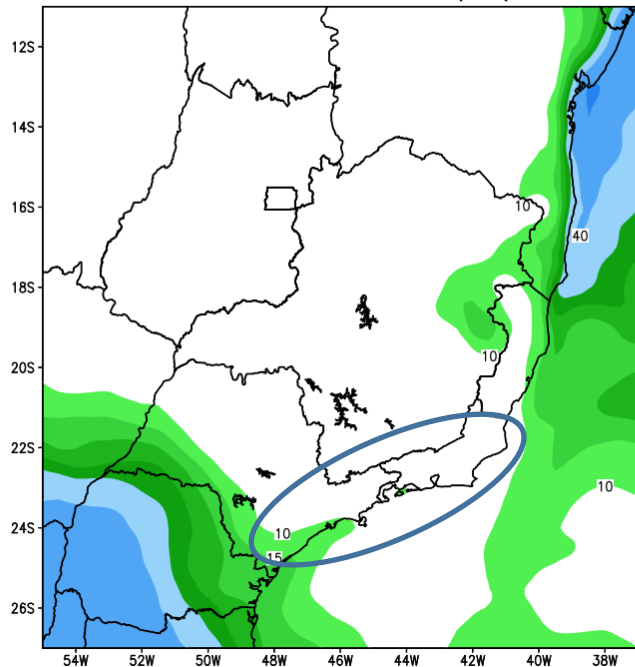


Situação meteorológica atual

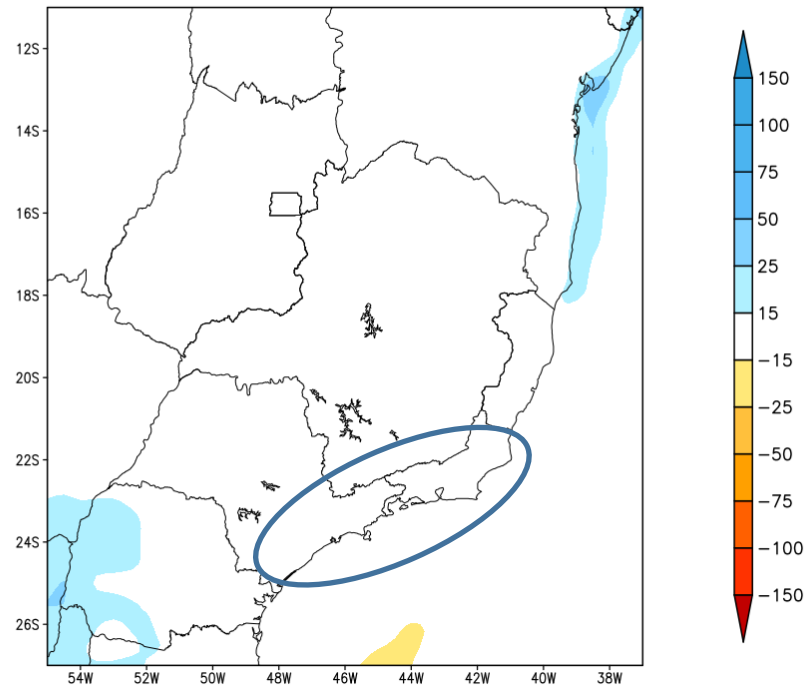


Previsão Primeira Semana

GEFS / BRASIL_SE
Precipitacao acumulada 1aSem (mm)
Previsao das 00Z dia 10/06/2025

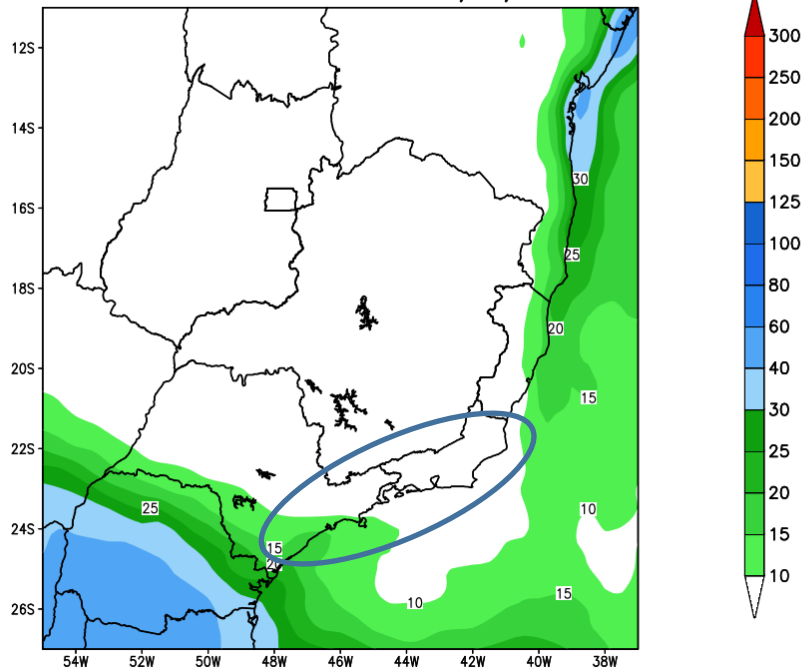


Anomalia de Precipitacao BR_SE (mm)
Periodo: 2025061000 a 2025061700

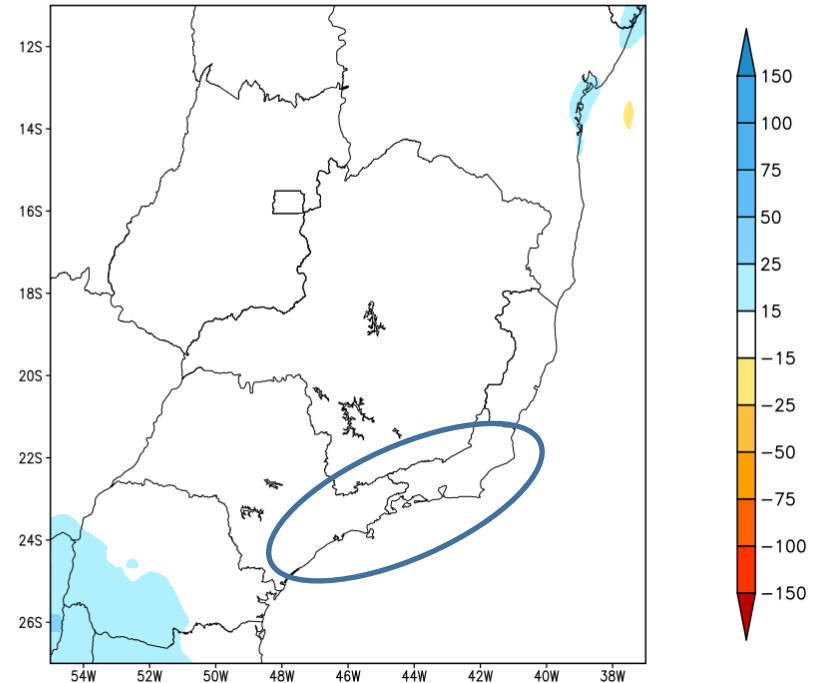


Previsão Segunda Semana

GEFS / BRASIL_SE
Precipitacao acumulada 2aSem (mm)
Previsao das 00Z dia 10/06/2025



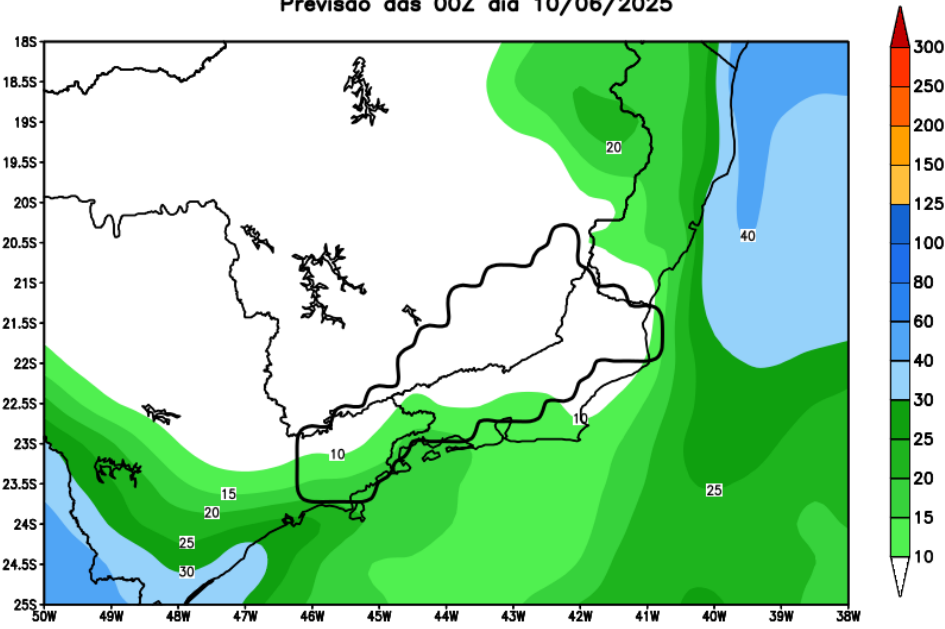
Anomalia de Precipitacao BR SE (mm)
Periodo: 2025061800 a 2025062400



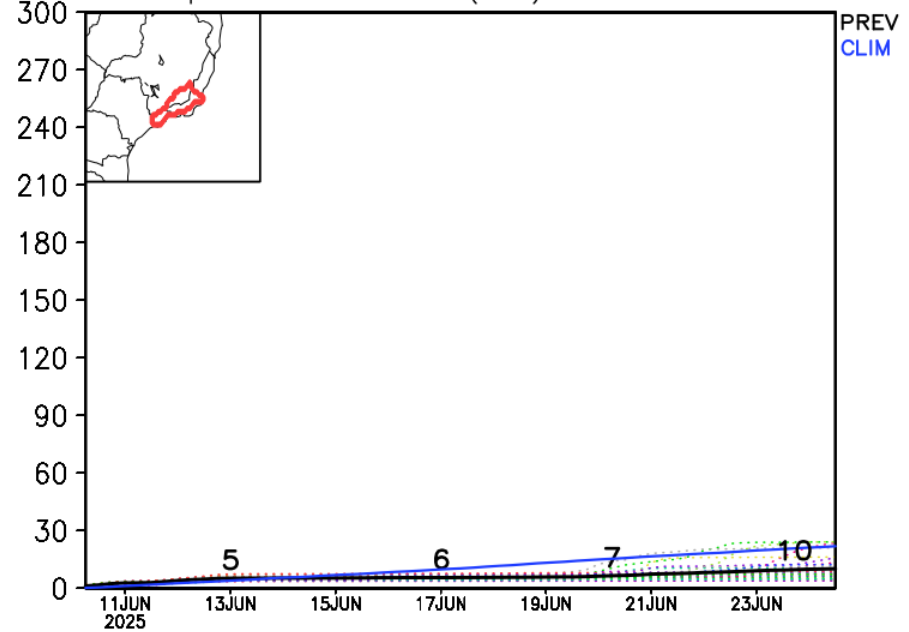
Rio Paraíba do Sul

previsão de chuva em 14 dias

GEFS / Bacia do Rio Paraíba do Sul
Precipitação acumulada em 14 dias (mm)
Previsão das 00Z dia 10/06/2025



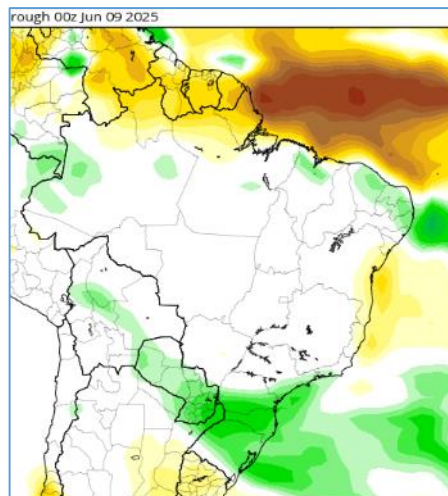
Precipitação acumulada (mm): Bacia ParaíbaSul



Modelo GEFS/NOAA

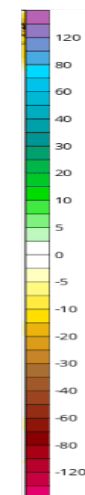
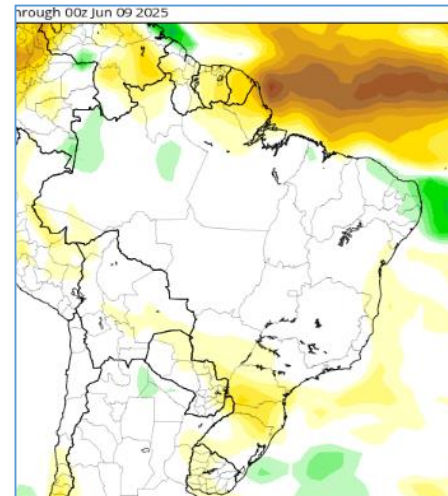
Anomalia de Chuva 3a e 4a semanas

23-30 Junho

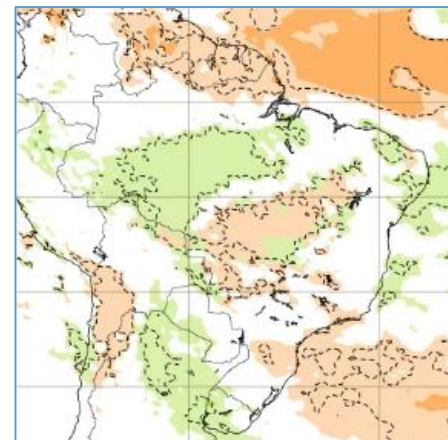
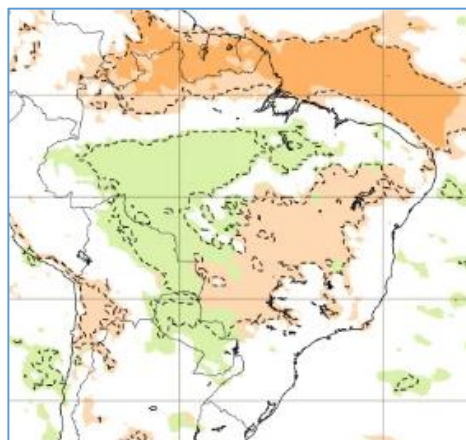


Modelo
Americano
CFS/NOAA

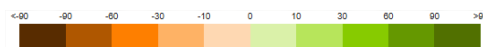
30 Junho – 07 Julho



Modelo Europeu
ECMWF



26 - 01 Junho

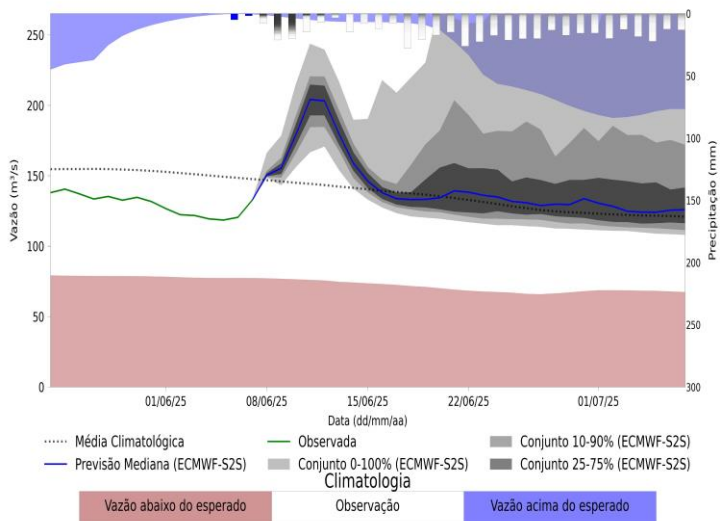


02-08 Junho

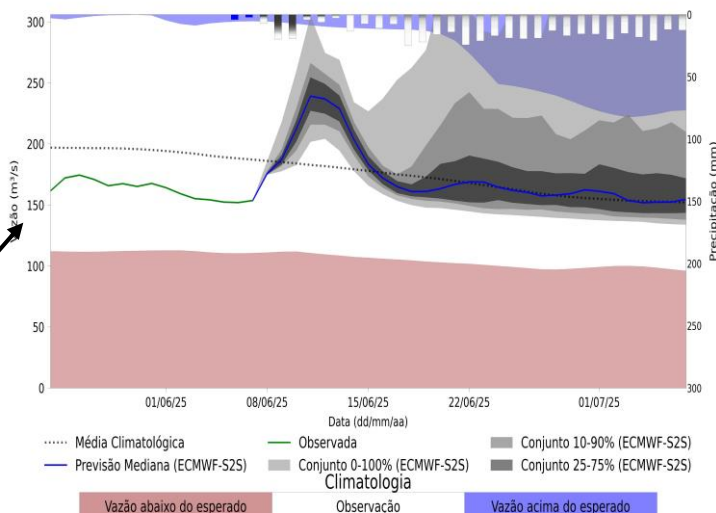
Previsão de vazão natural na Bacia Rio Paraíba do Sul 30 dias (Modelo hidrológico MHD)

Previsão: 07/06/2025 a 07/07/2025

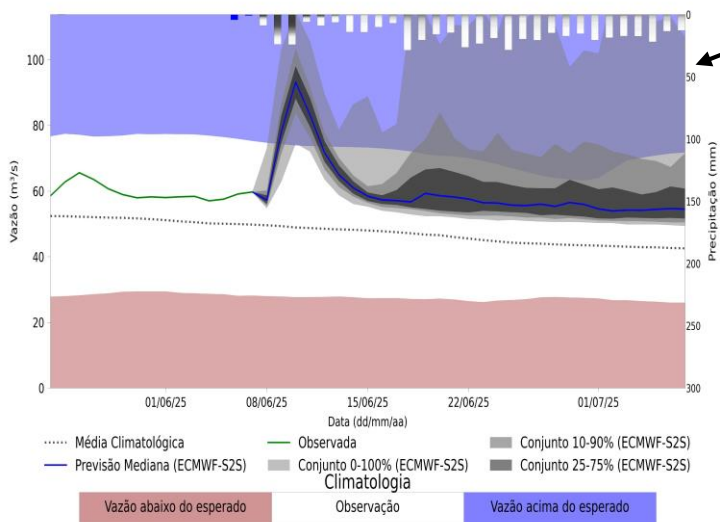
UHE Funil



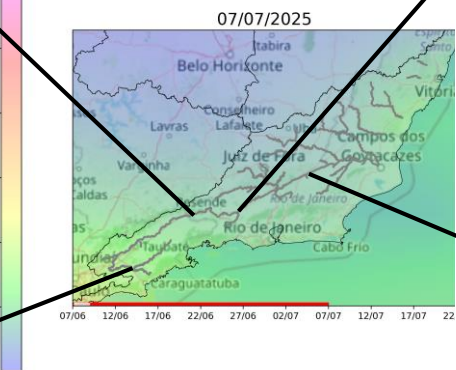
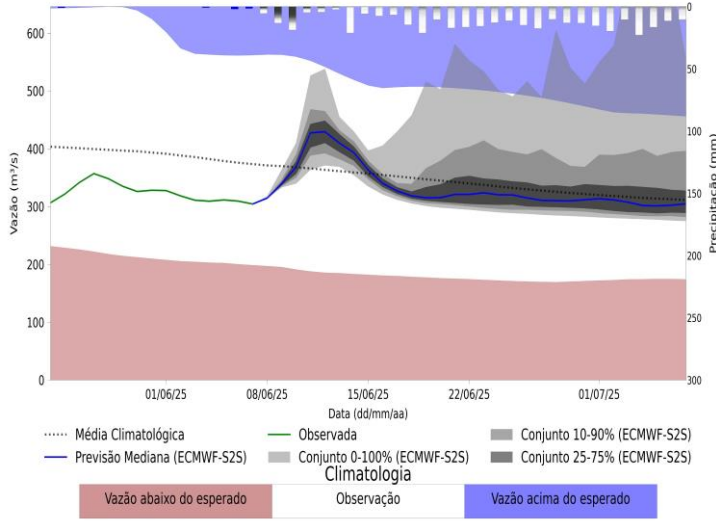
UHE Santa Cecilia



UHE Paraibuna



UHE Ilha dos Pombos



**Fonte: Meteorologia
(INMET/MERGE);
Vazão (ANA/ONS)
MLT: 2002-2024
Previsão Meteorológica:
ECMWF-S2S**









MINISTÉRIO DA
CIÊNCIA, TECNOLOGIA
E INOVAÇÃO

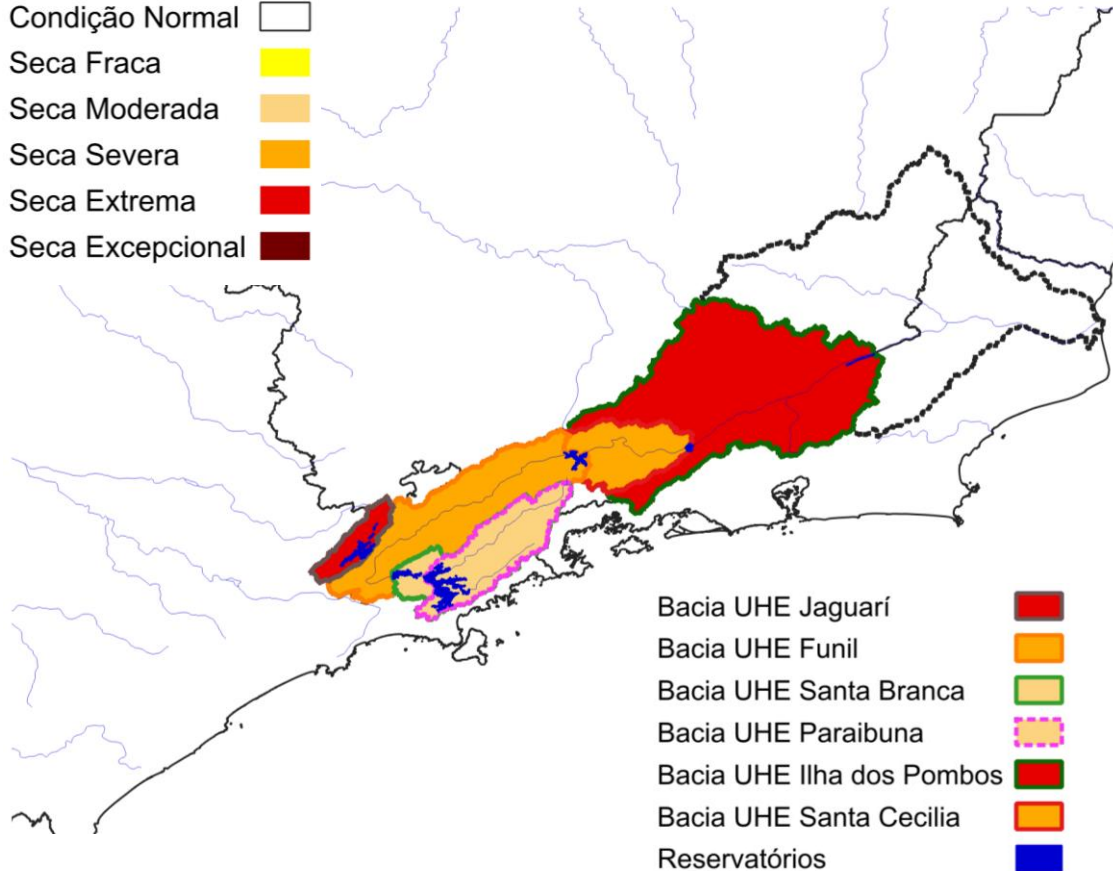


Índice de Seca Bivariado (Chuva-Vazão) - TSI

(*Two-variate Standardized Index* – **Escala de 6 meses**)

Previsão Próximos 30 dias

Condição Normal 
Seca Fraca 
Seca Moderada 
Seca Severa 
Seca Extrema 
Seca Excepcional 



Intensificação da seca:

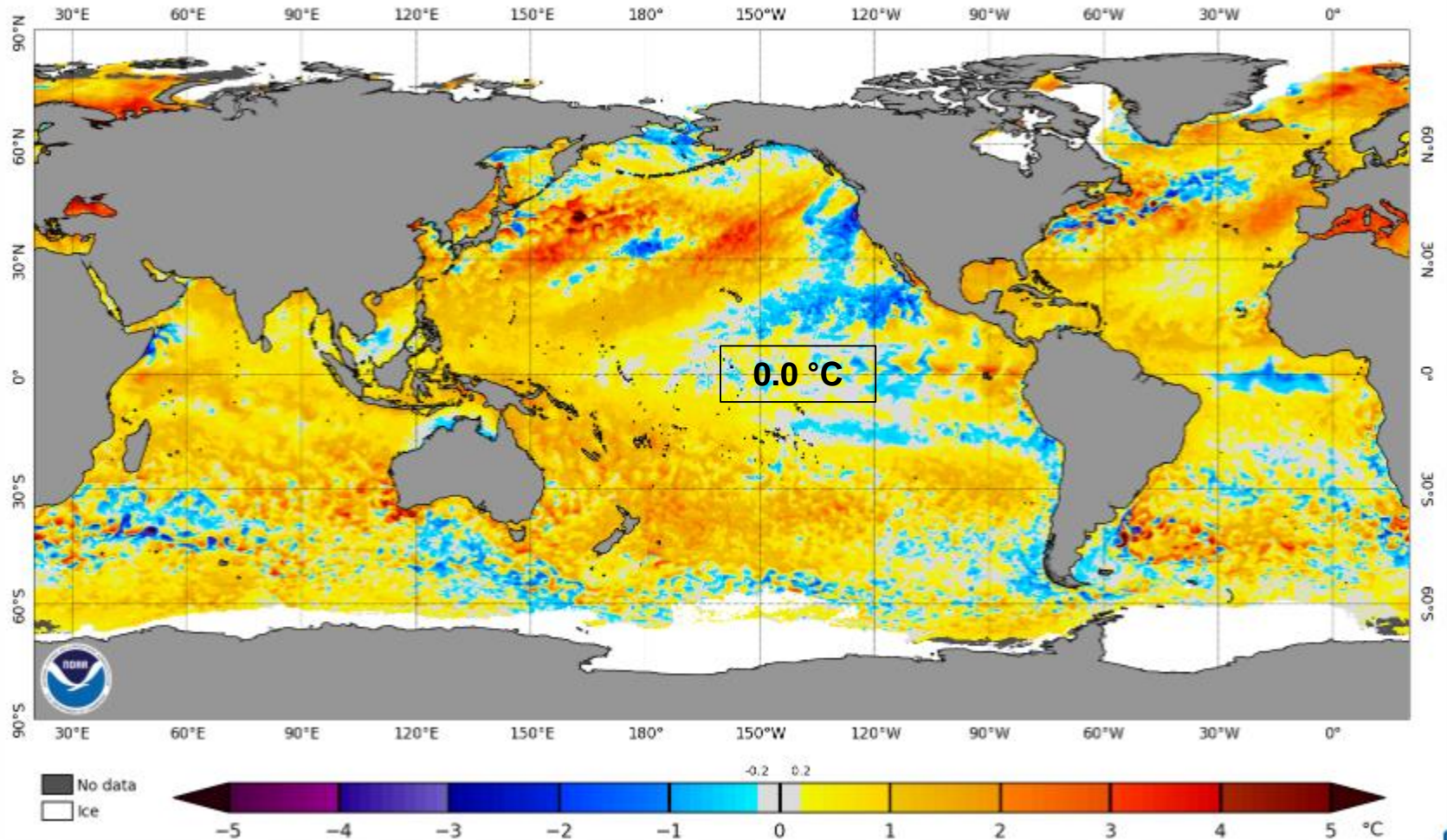
- Santa Branca (*Fraca -> Mod.*)
- Paraibuna (*Fraca -> Mod.*)
- Santa Cecília (*Mod. -> Severa*)
- Funil (*Mod. -> Severa*)
- Jaguarí (*Severa -> Extrema*)

Estabilidade da seca:

- Ilha dos Pombos (*Extrema*)

Situação Oceânica

NOAA Coral Reef Watch Daily 5km SST Anomalies (v3.1) 8 Jun 2025



Previsão Sazonal de Chuva Multi-Modelo

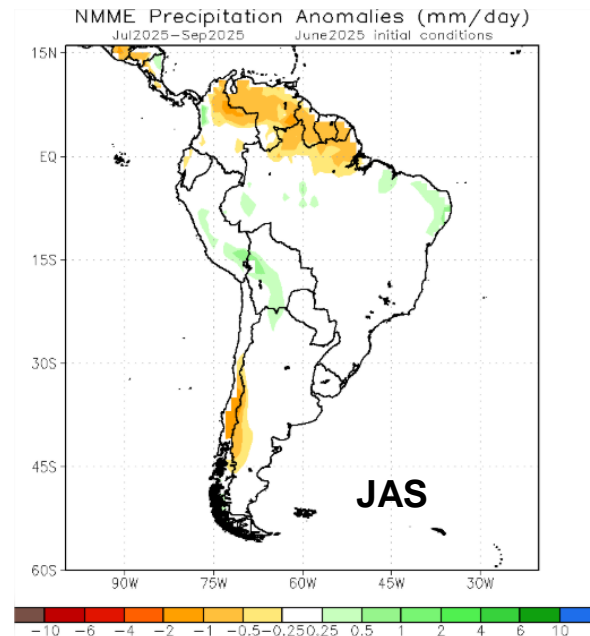
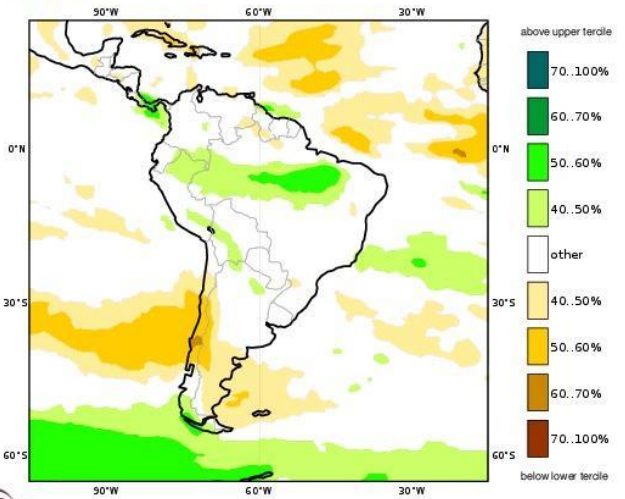
Junho-Julho-Agosto

C3S multi-system seasonal forecast

Prob(most likely category of precipitation)

Nominal forecast start: 01/05/25

Unweighted mean

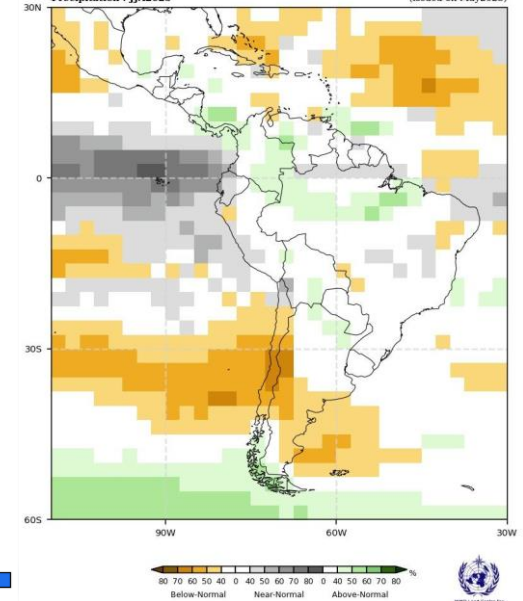


Probabilistic Multi-Model Ensemble Forecast

CMCC, CPTC, ECMWF, Exeter, Melbourne, Montreal, Moscow, Offenbach, Seoul, Tokyo, Washington

Precipitation : JJA2025

(issued on May2025)



Modelos Europeus

Modelos Norte Americanos

Modelos da WMO