



CEMADEN

**Centro Nacional de Monitoramento e
Alertas de Desastres Naturais**

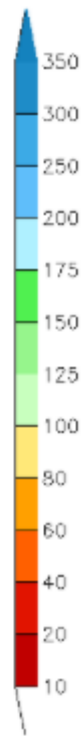
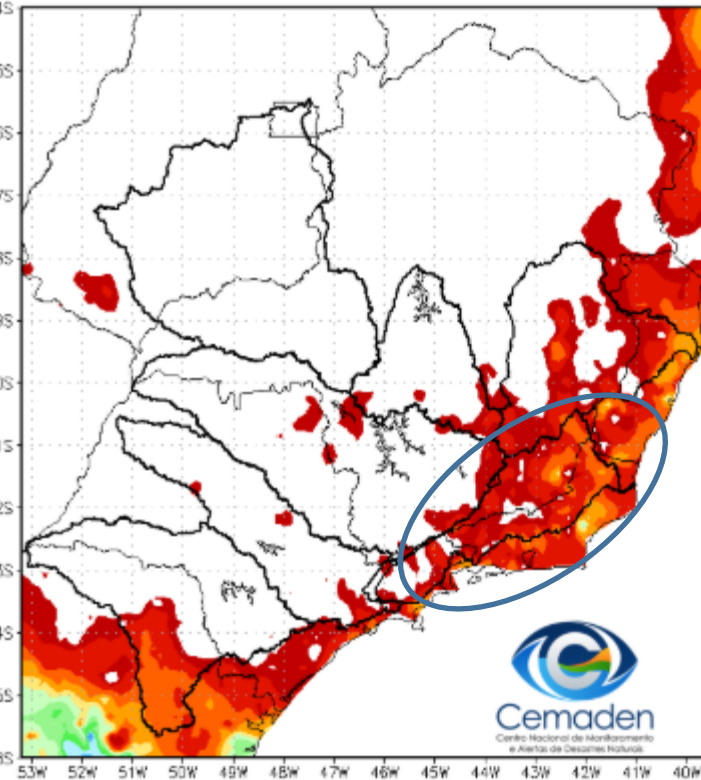
Monitoramento e Previsões para a Bacia do Rio Paraíba do Sul

09 de setembro de 2025

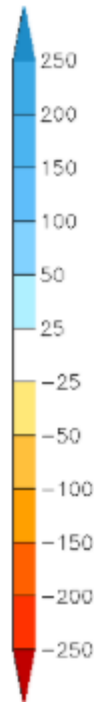
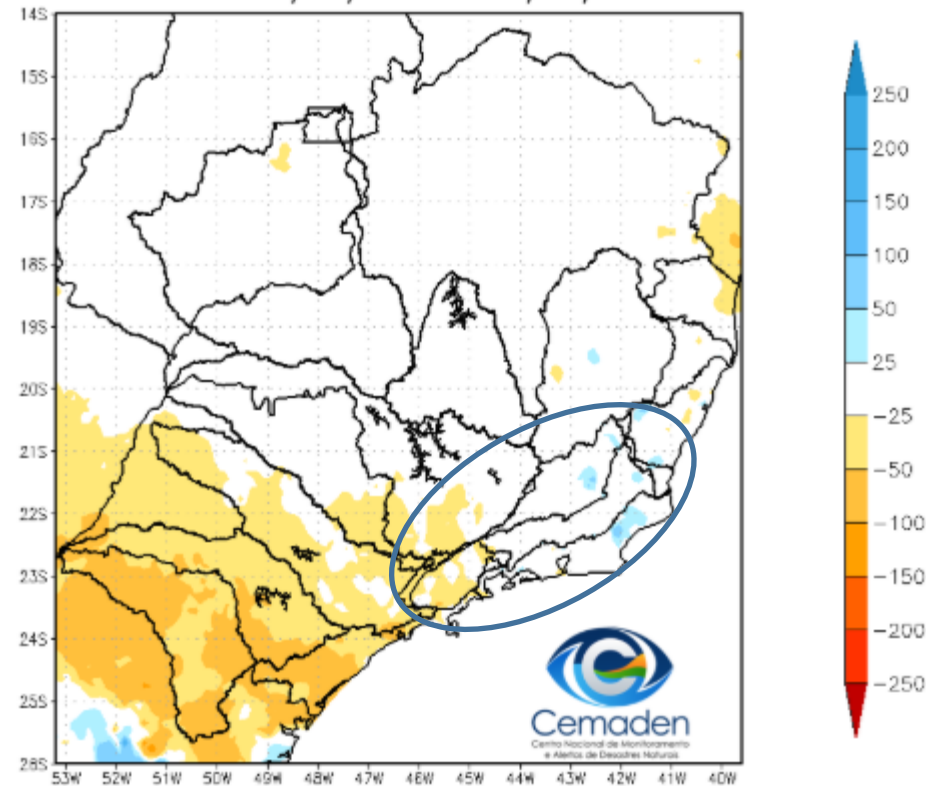


Precipitação acumulada nos últimos 30 dias

Precipitação Acumulada (mm) A.S.
Período: 09/08/2025 a 08/09/2025

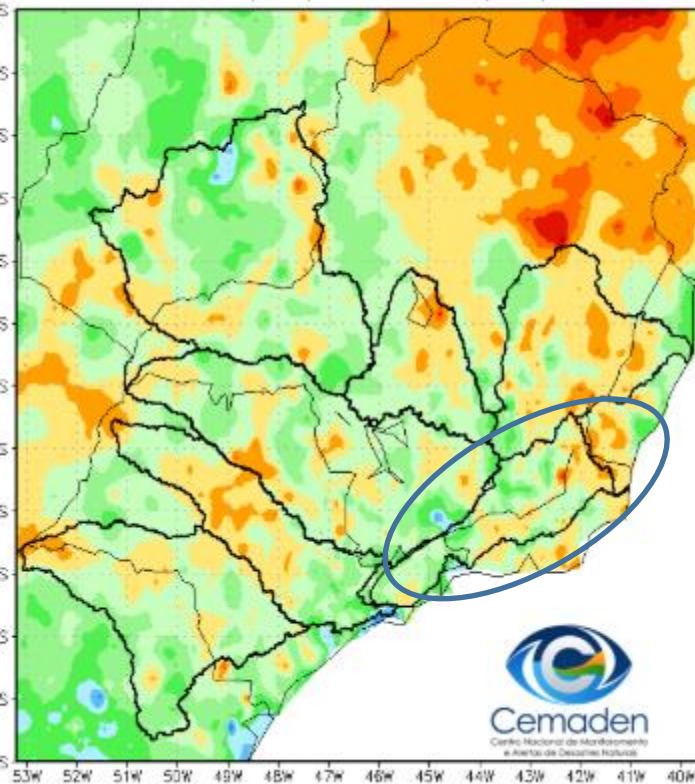


Anomalia de Precipitação (mm) A.S.
Período: 09/08/2025 a 08/09/2025

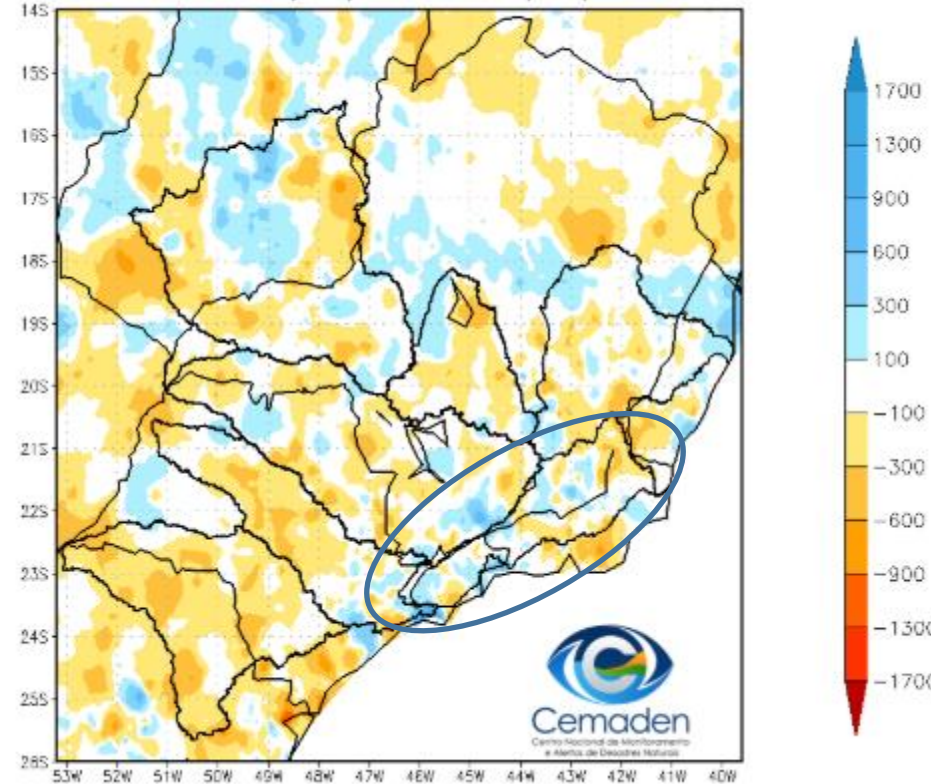


Precipitação acumulada no ano hidrológico

Precipitação Acumulada (mm) A.S.
Período: 01/10/2024 a 08/09/2025

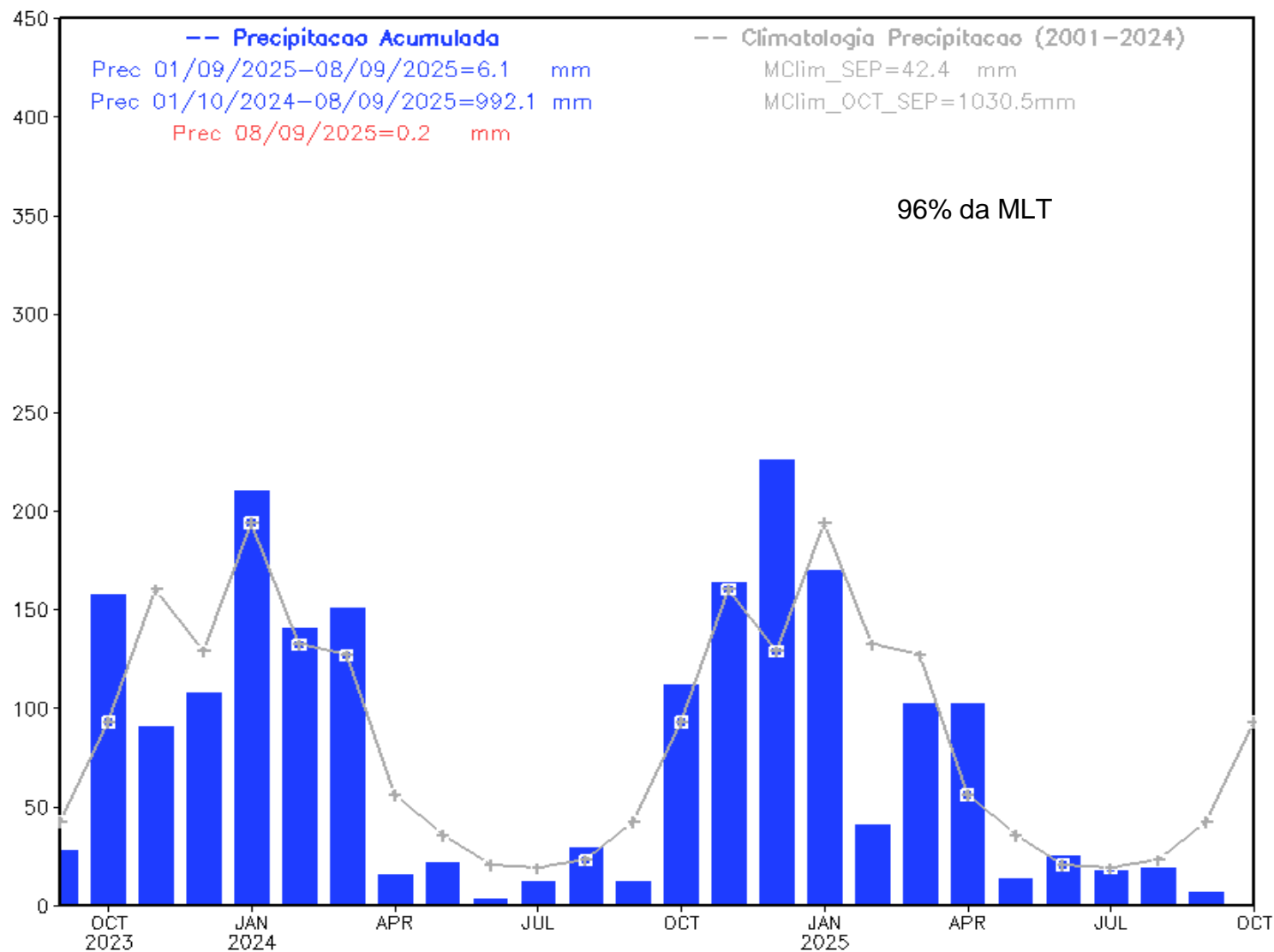


Anomalia de Precipitação (mm) A.S.
Período: 01/10/2024 a 08/09/2025



Evolução Temporal da Precipitação

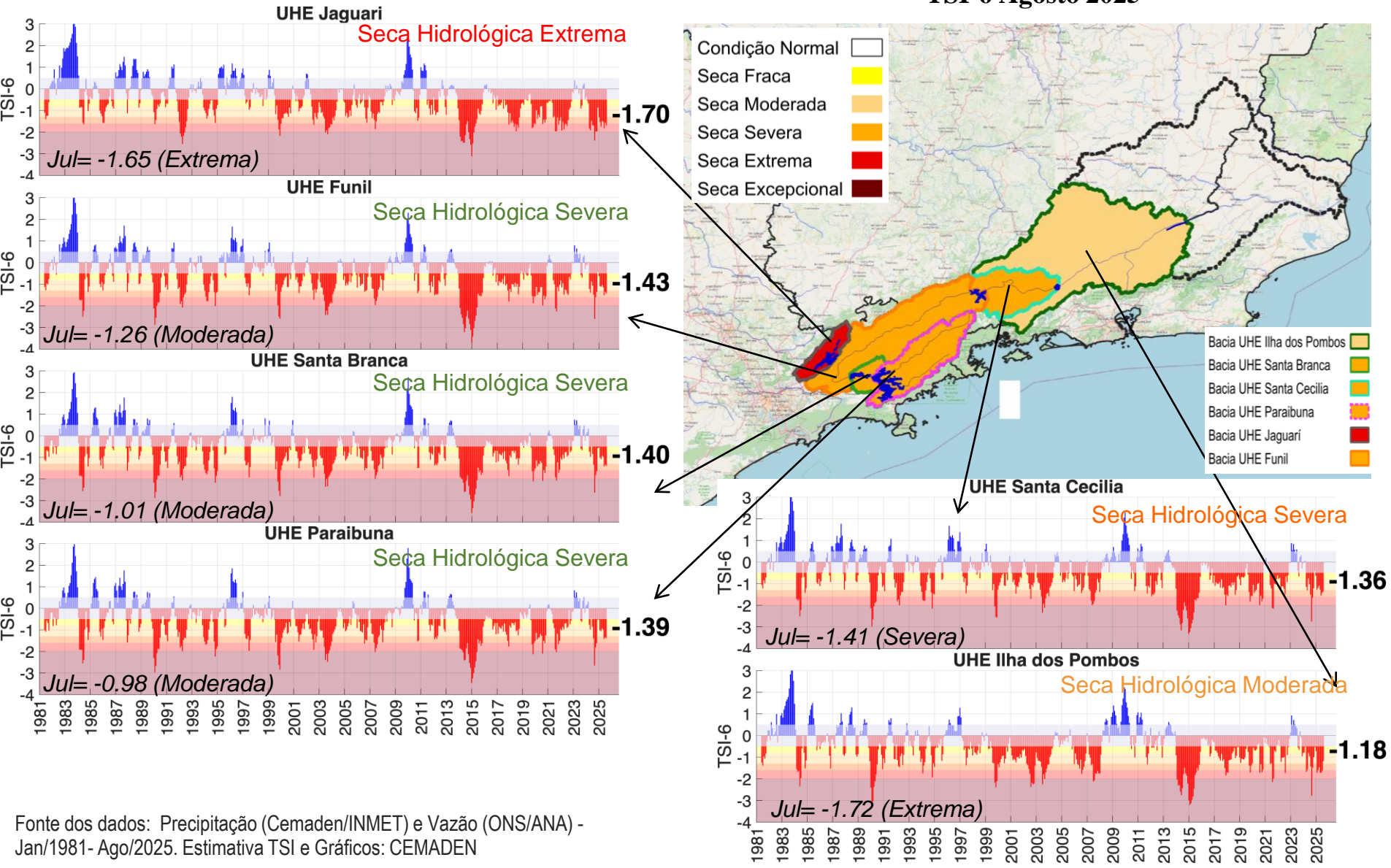
Precipitacao Bacia do Rio Paraiba_Sul desde SEP 2023



Índice de Seca Bivariado (Chuva-Vazão) - TSI

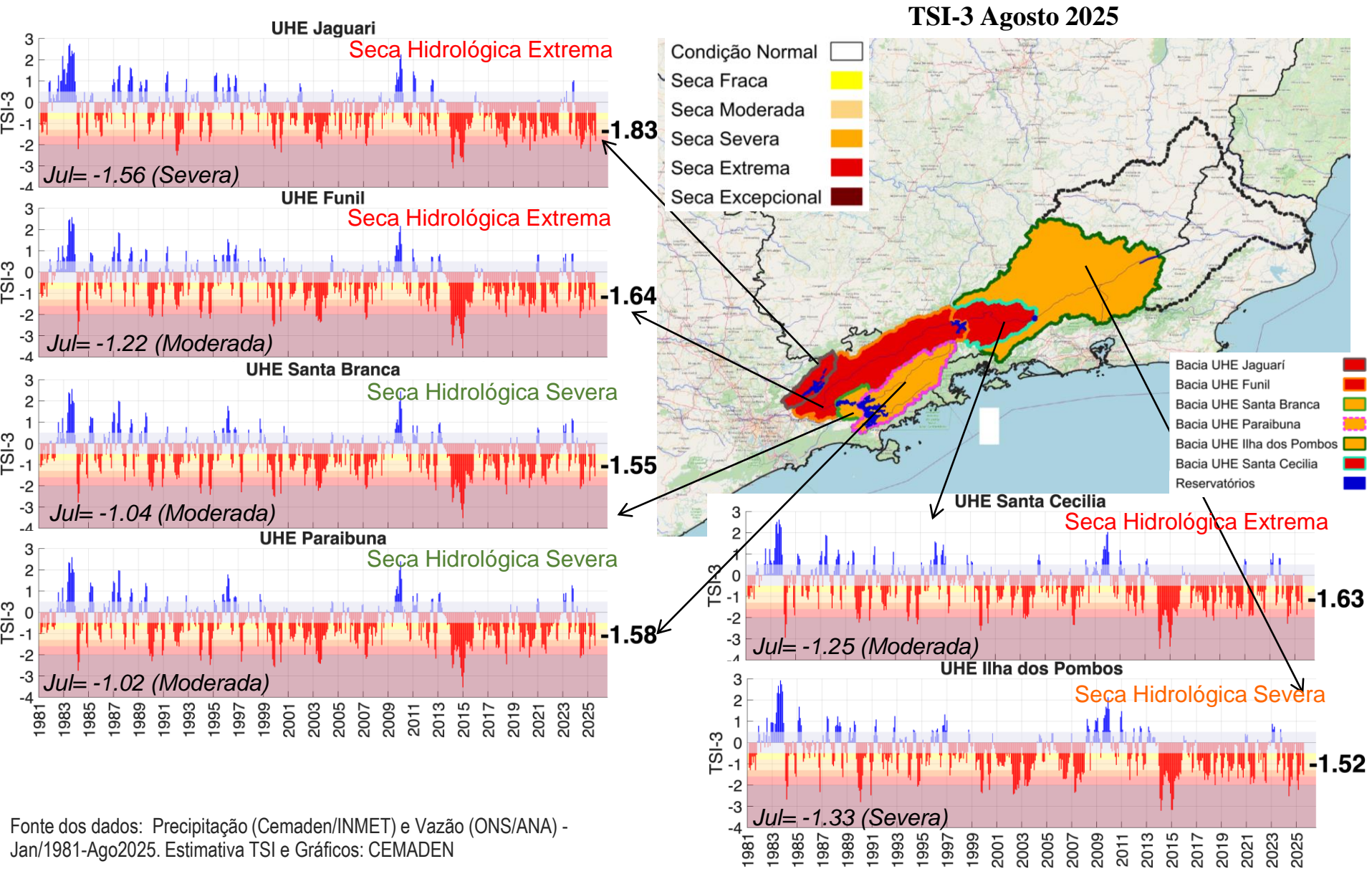
(Two-variate Standardized Index – Escala de 6 meses)

TSI-6 Agosto 2025

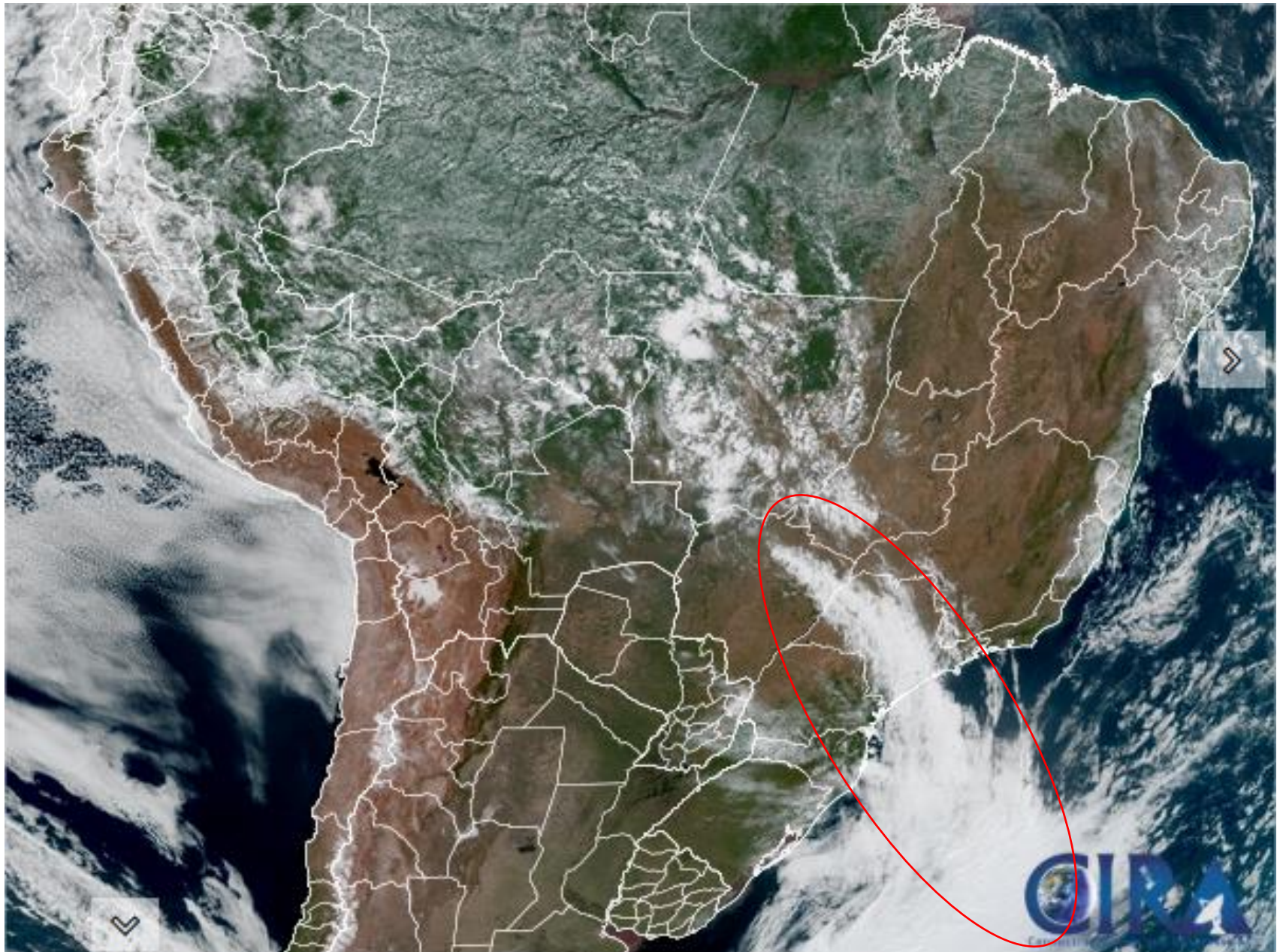


Índice de Seca Bivariado (Chuva-Vazão) - TSI

(Two-variate Standardized Index – Escala de 3 meses)

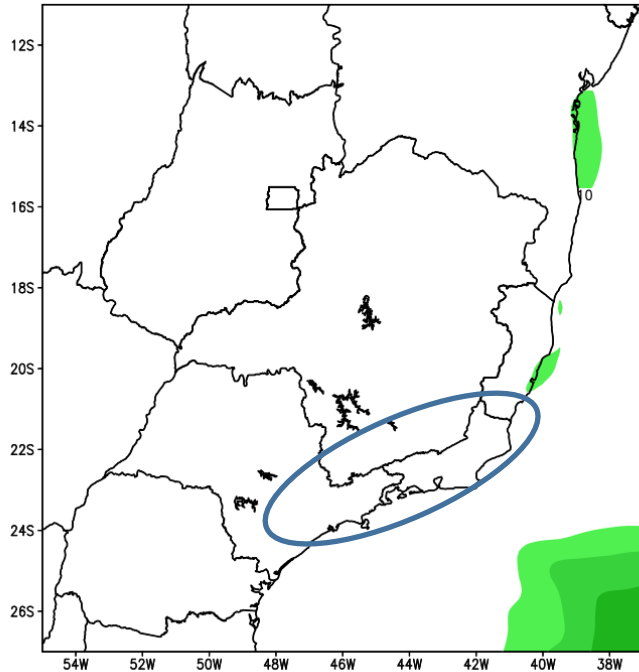


Situação meteorológica atual

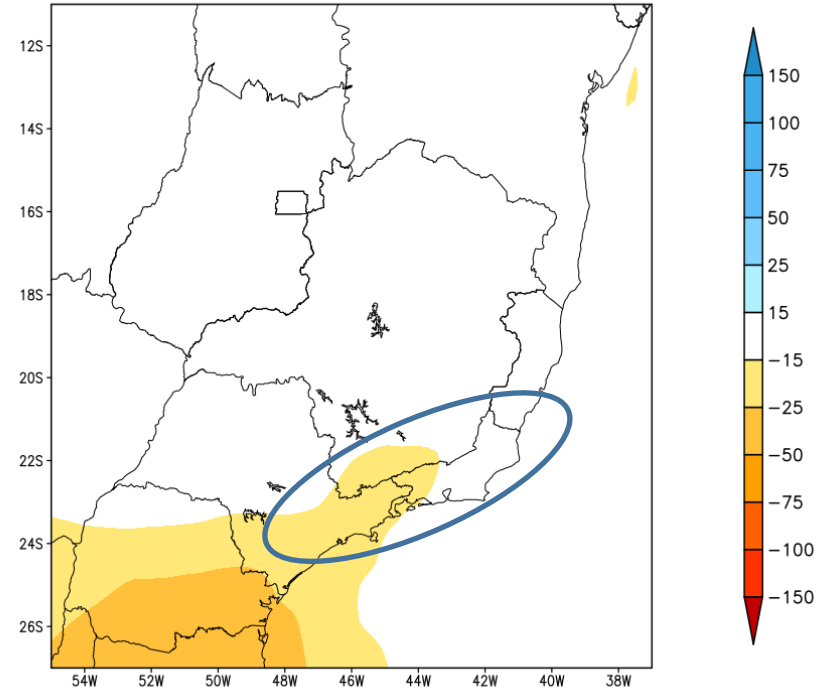


Previsão Primeira Semana

GEFS / BRASIL_SE
Precipitação acumulada 1aSem (mm)
Previsão das 00Z dia 09/09/2025

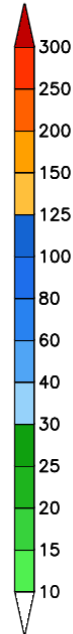
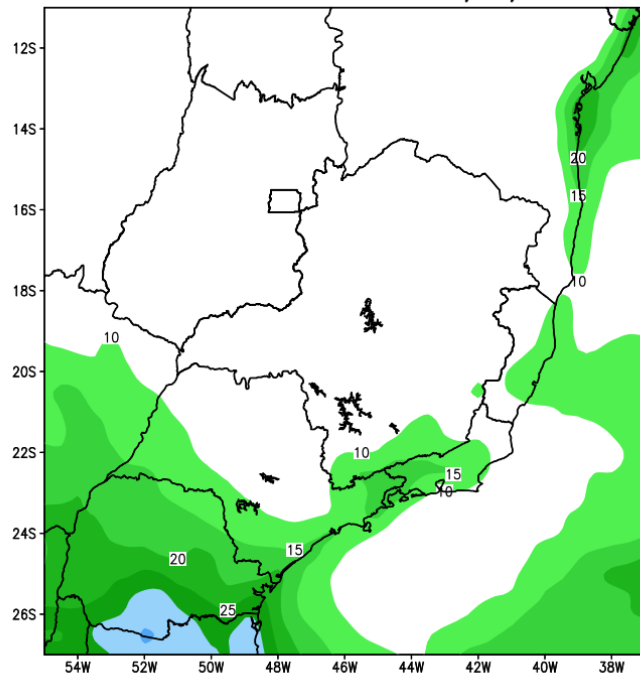


Anomalia de Precipitação BR_SE (mm)
Período: 2025090900 a 2025091600

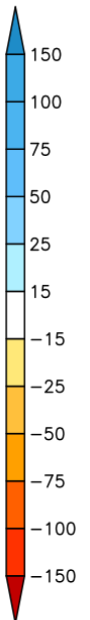
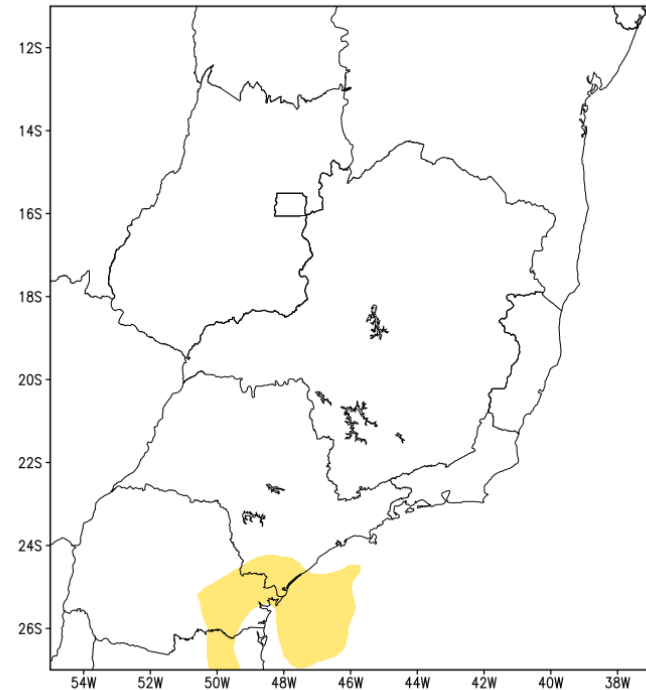


Previsão Segunda Semana

GEFS / BRASIL_SE
Precipitacao acumulada 2aSem (mm)
Previsao das 00Z dia 09/09/2025



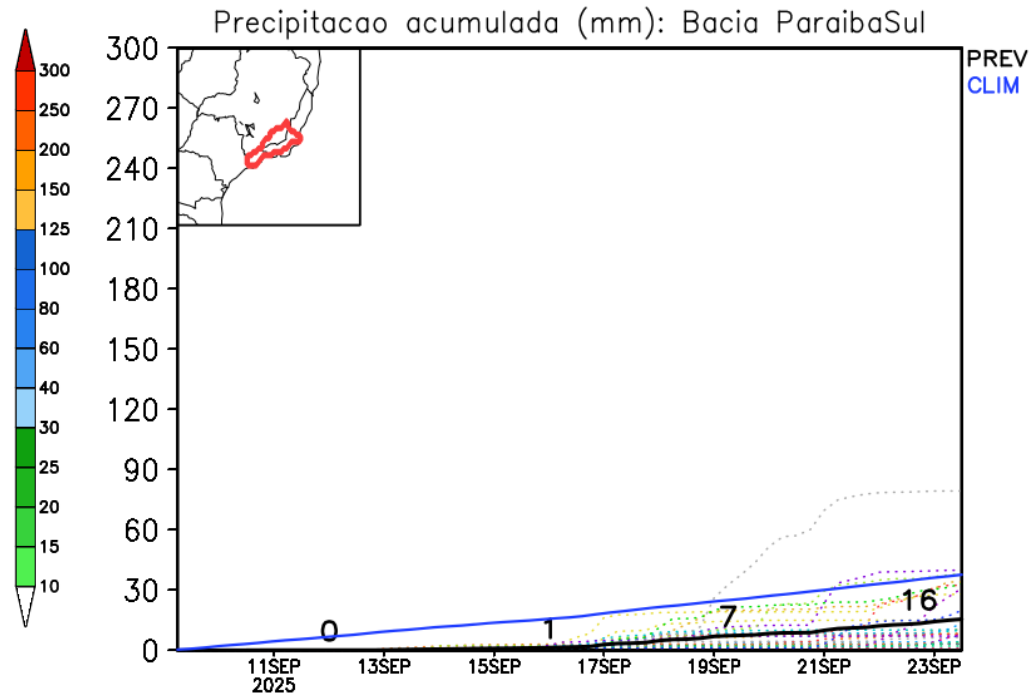
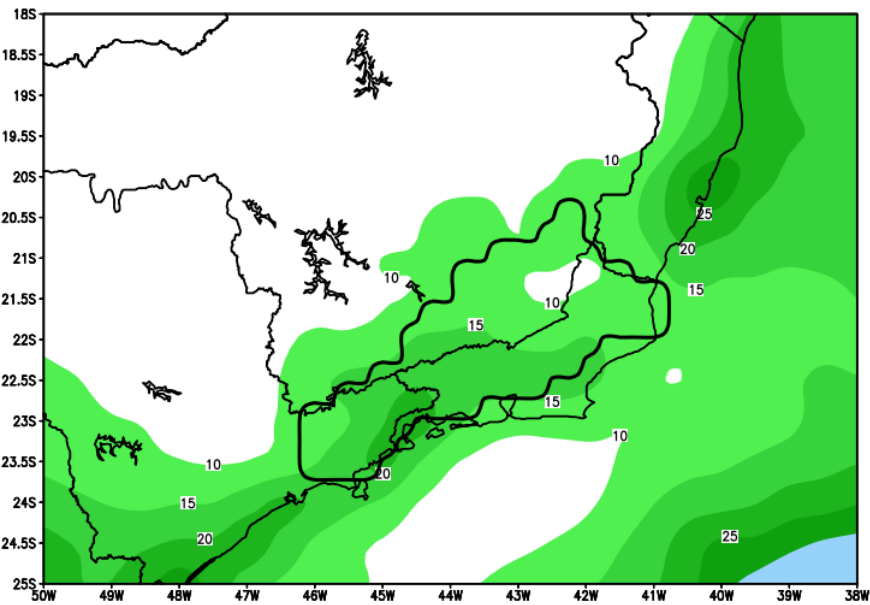
Anomalia de Precipitacao BR SE (mm)
Periodo: 2025091700 a 2025092300



Rio Paraíba do Sul

previsão de chuva em 14 dias

GEFS / Bacia do Rio Paraíba do Sul
Precipitação acumulada em 14 dias (mm)
Previsão das 00Z dia 09/09/2025



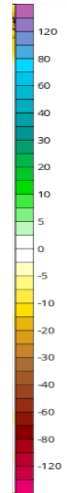
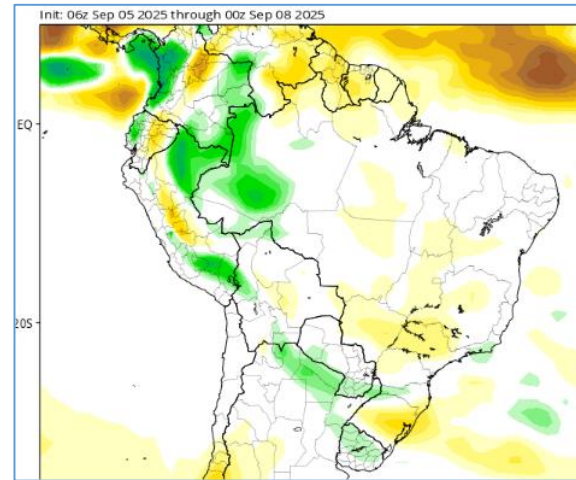
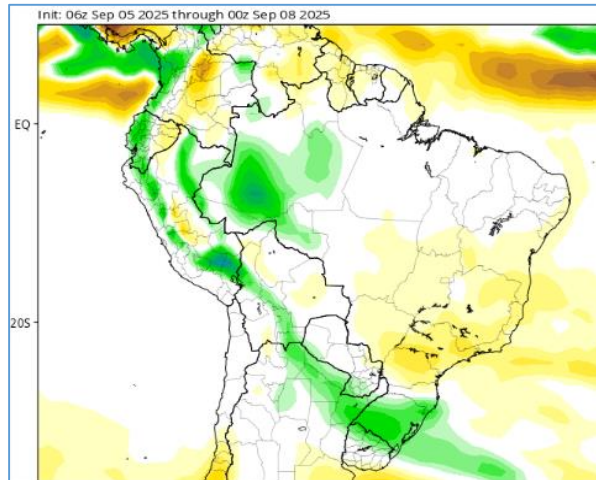
Modelo GEFS/NOAA

Anomalia de Chuva 3a e 4a semanas

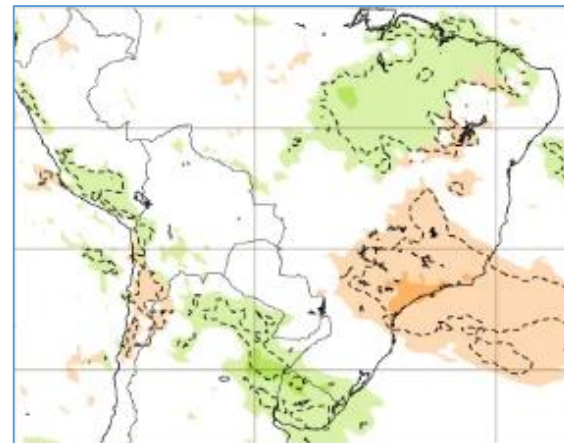
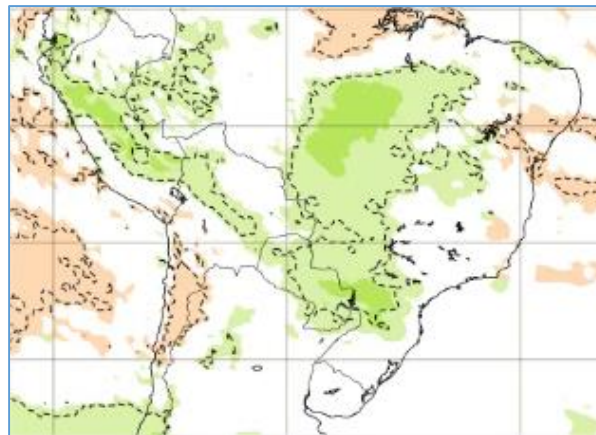
22-29 Set

29 Set -06 Out

CFS/NOAA

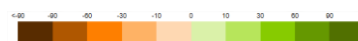


ECMWF



22-29 Set

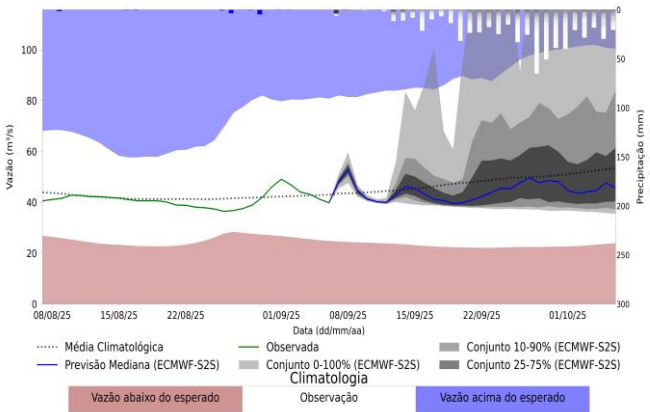
29 Set -06 Out



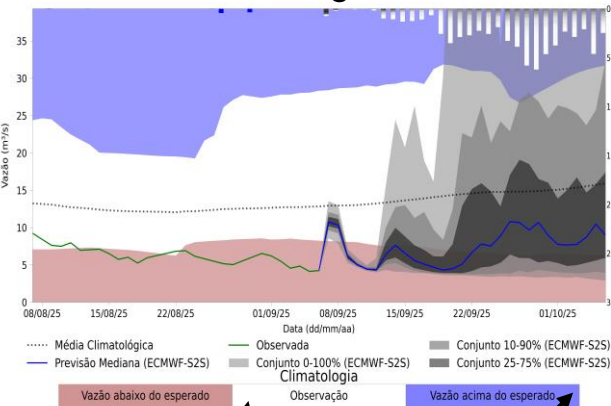
Previsão de vazão natural na Bacia Rio Paraíba do Sul 30 dias (Modelo hidrológico MHD)

Previsão: 06/09/2025 a 06/10/2025

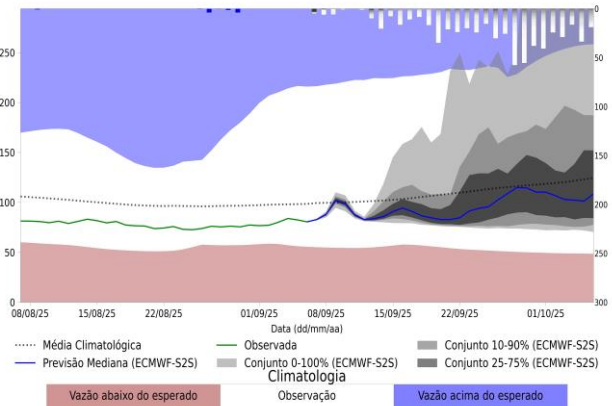
UHE Santa Branca



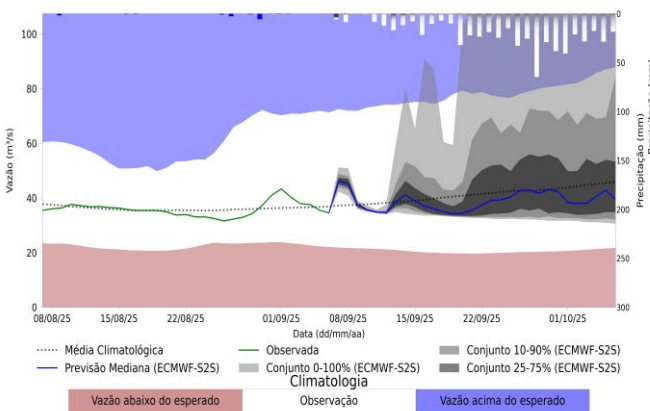
UHE Jaguari



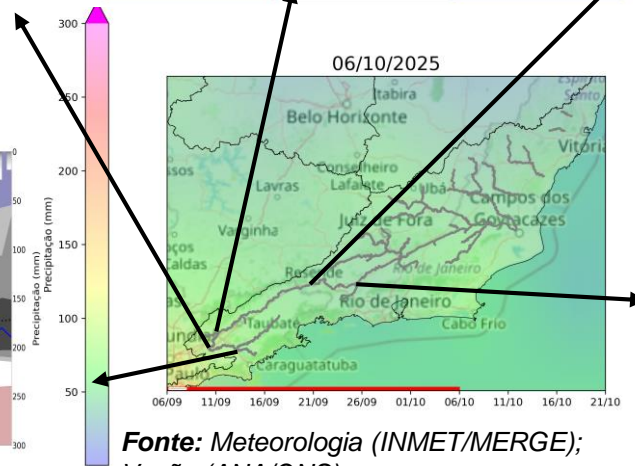
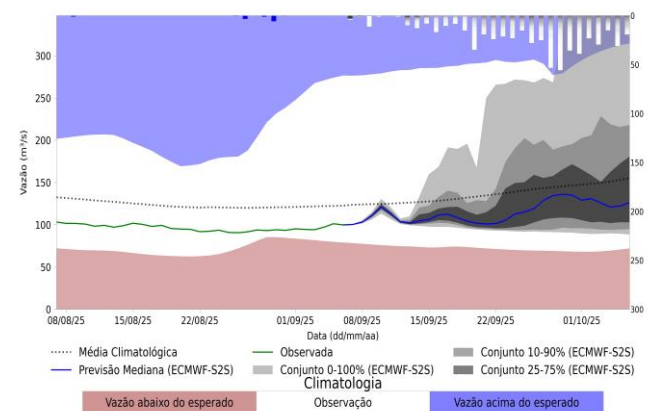
UHE Funil



UHE Paraibuna



UHE Santa Cecilia

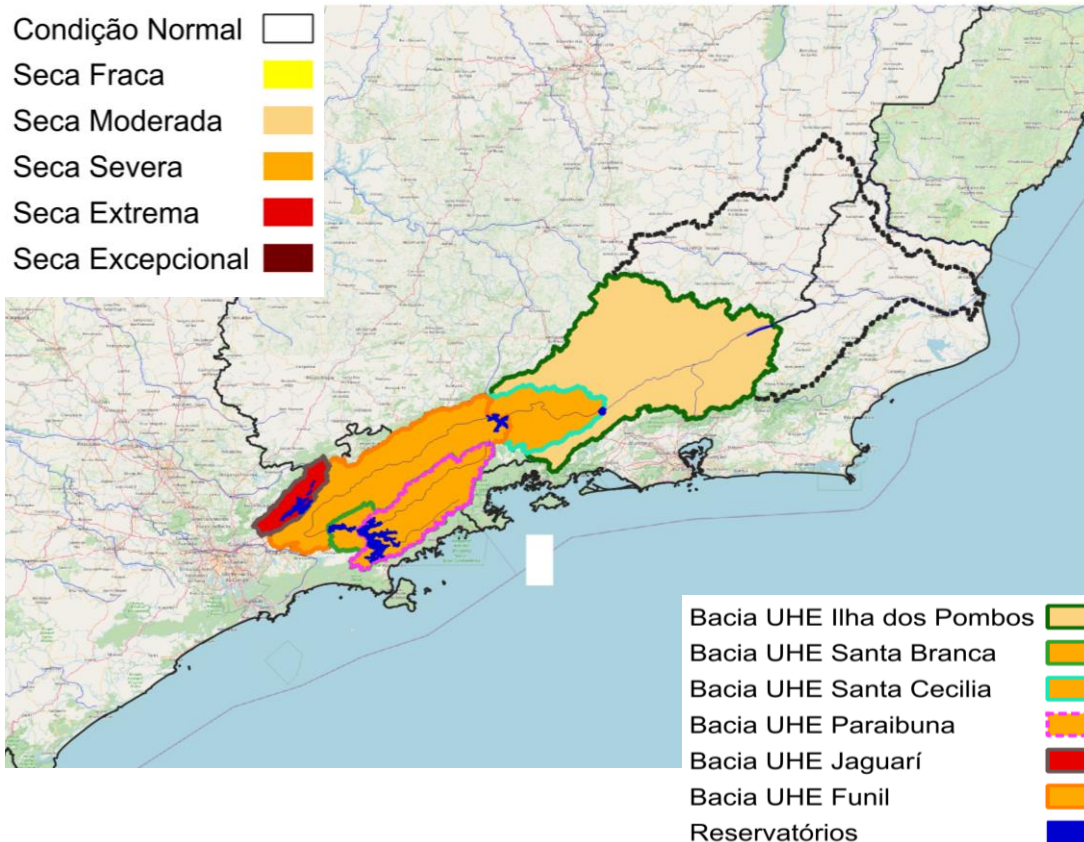


Fonte: Meteorologia (INMET/MERGE);
Vazão (ANA/ONS)
MLT: 1993-2024
Previsão Meteorológica: ECMWF-S2S

Índice de Seca Bivariado (Chuva-Vazão) - TSI

(*Two-variate Standardized Index* – **Escala de 6 meses**)

Previsão Próximos 30 dias

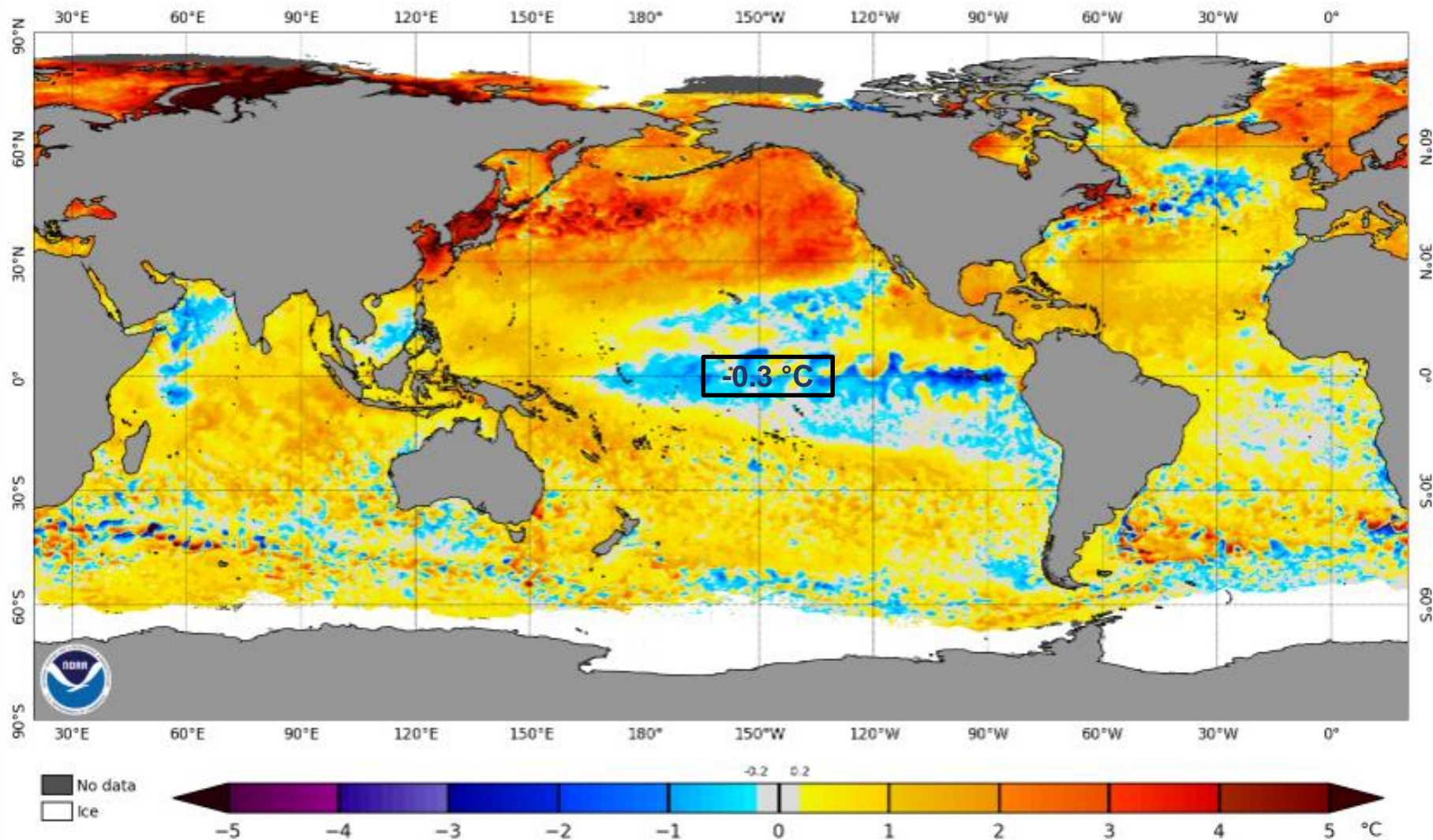


Estabilidade da seca:

- Jaguari (Extrema)
- Santa Branca (Severa)
- Paraibuna (Severa)
- Funil (Severa)
- Santa Cecília (Severa)
- Ilha dos Pombos (Moderada)

Status Atual: **La Niña Watch**

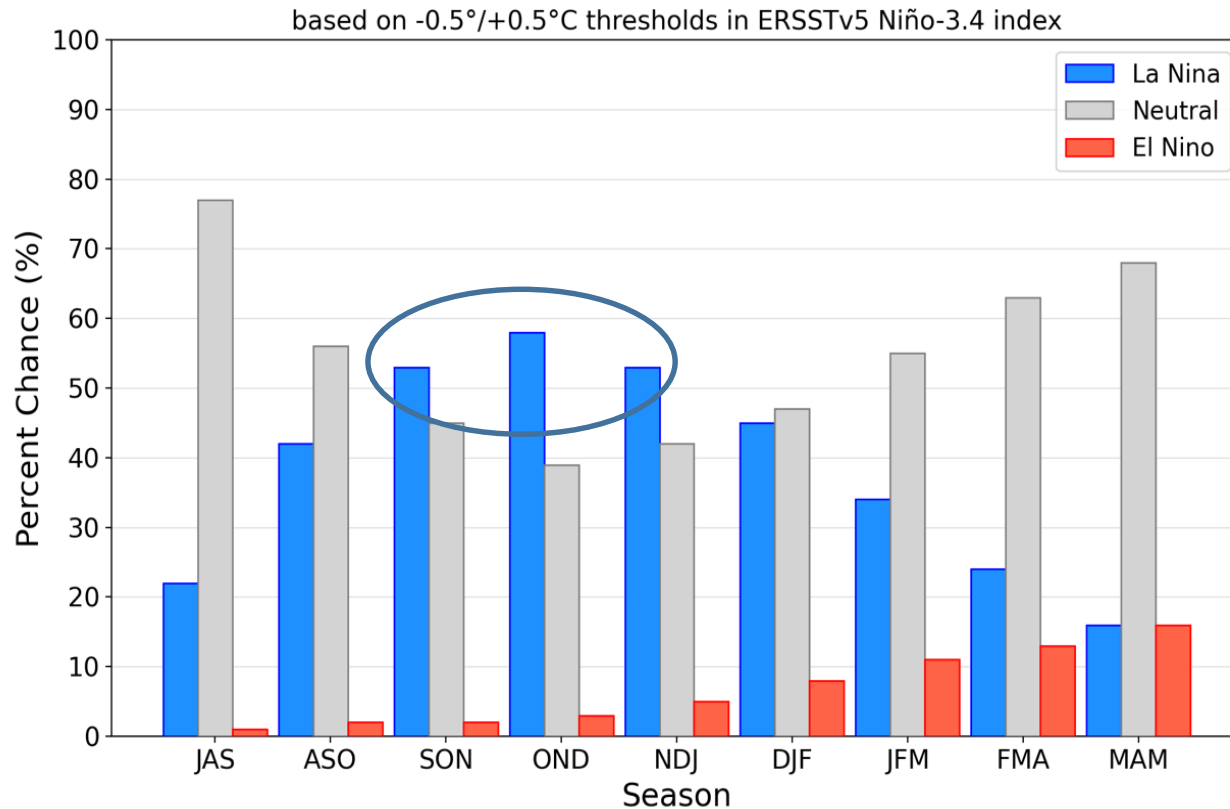
NOAA Coral Reef Watch Daily 5km SST Anomalies (v3.1) 7 Sep 2025



FONTE: NOAA

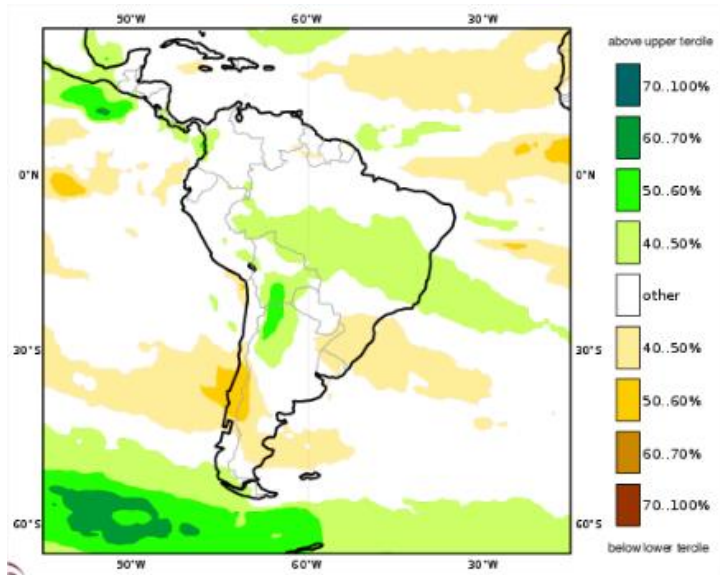
Previsão do “ENSO”

Official NOAA CPC ENSO Probabilities (issued August 2025)

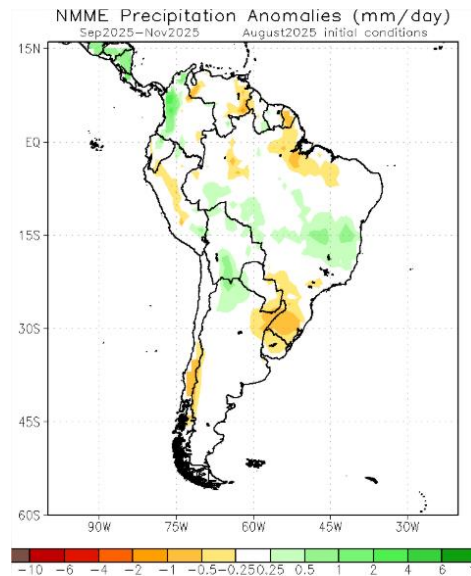


Previsão Sazonal de Chuva Multi-Modelo

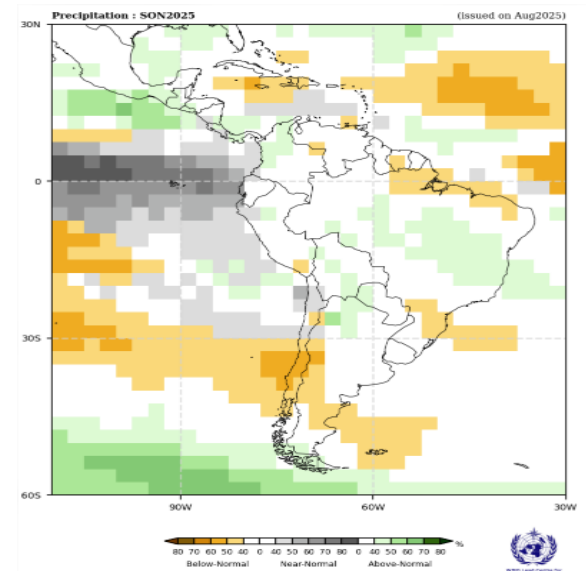
Setembro-Outubro-Novembro



Modelos “Europeus”



Modelos Norte Americanos



Modelos da WMO