



# CEMADEN

**Centro Nacional de Monitoramento e  
Alertas de Desastres Naturais**

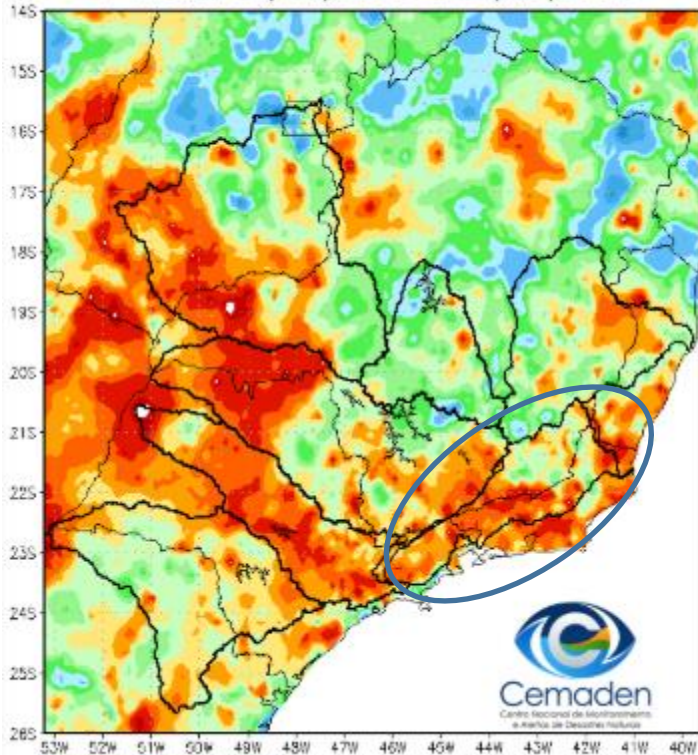
## Monitoramento e Previsões para a Bacia do Rio Paraíba do Sul

**08 de dezembro de 2025**

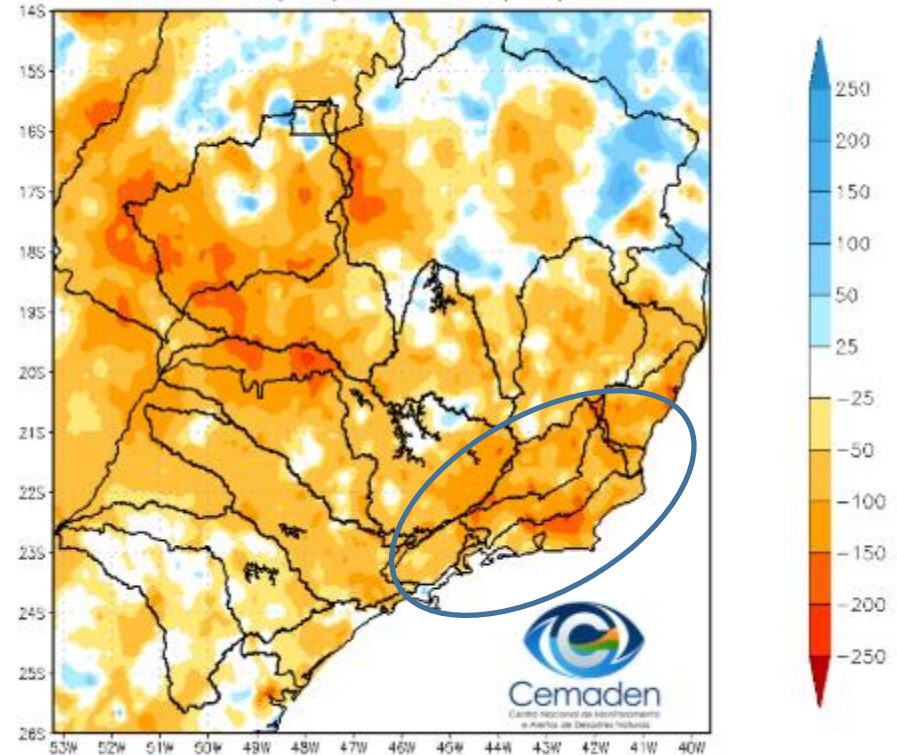


## Precipitação acumulada nos últimos 30 dias

Precipitação Acumulada (mm) A.S.  
Período: 07/11/2025 a 07/12/2025



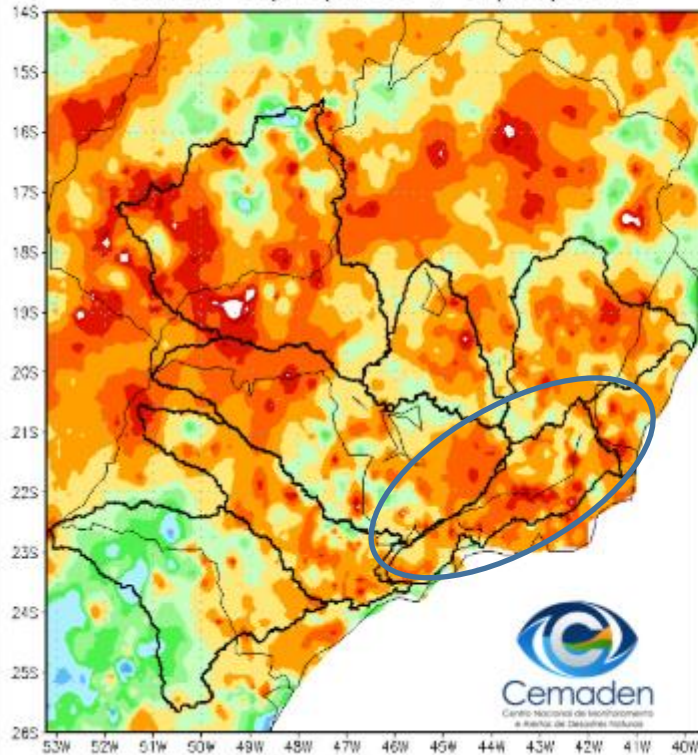
Anomalia de Precipitação (mm) A.S.  
Período: 07/11/2025 a 07/12/2025



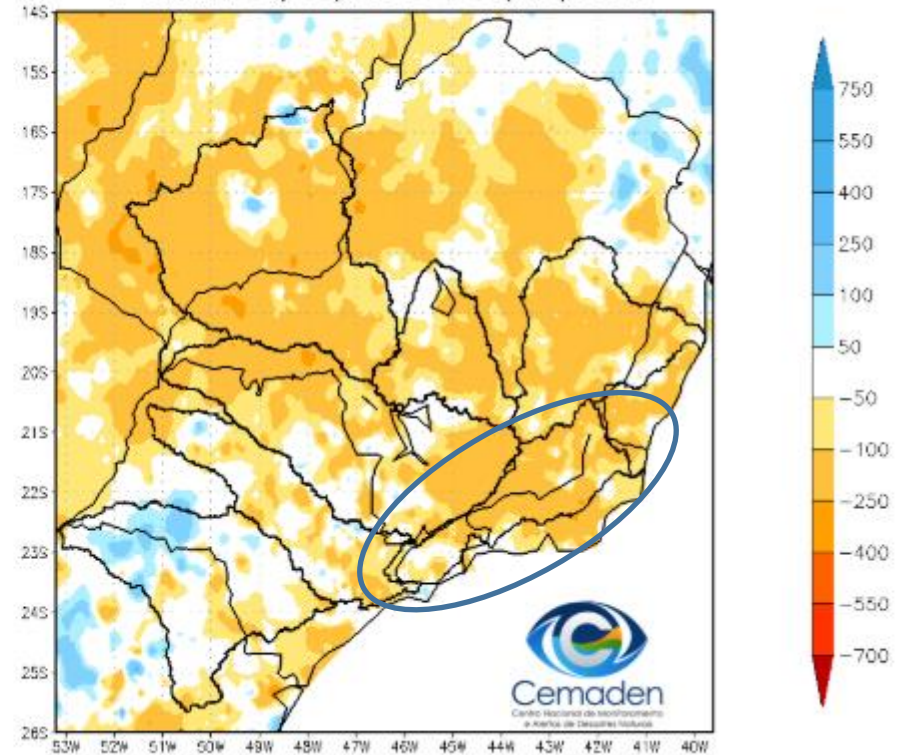


# Precipitação acumulada no ano hidrológico

Precipitação Acumulada (mm) A.S.  
Período: 01/10/2025 a 07/12/2025

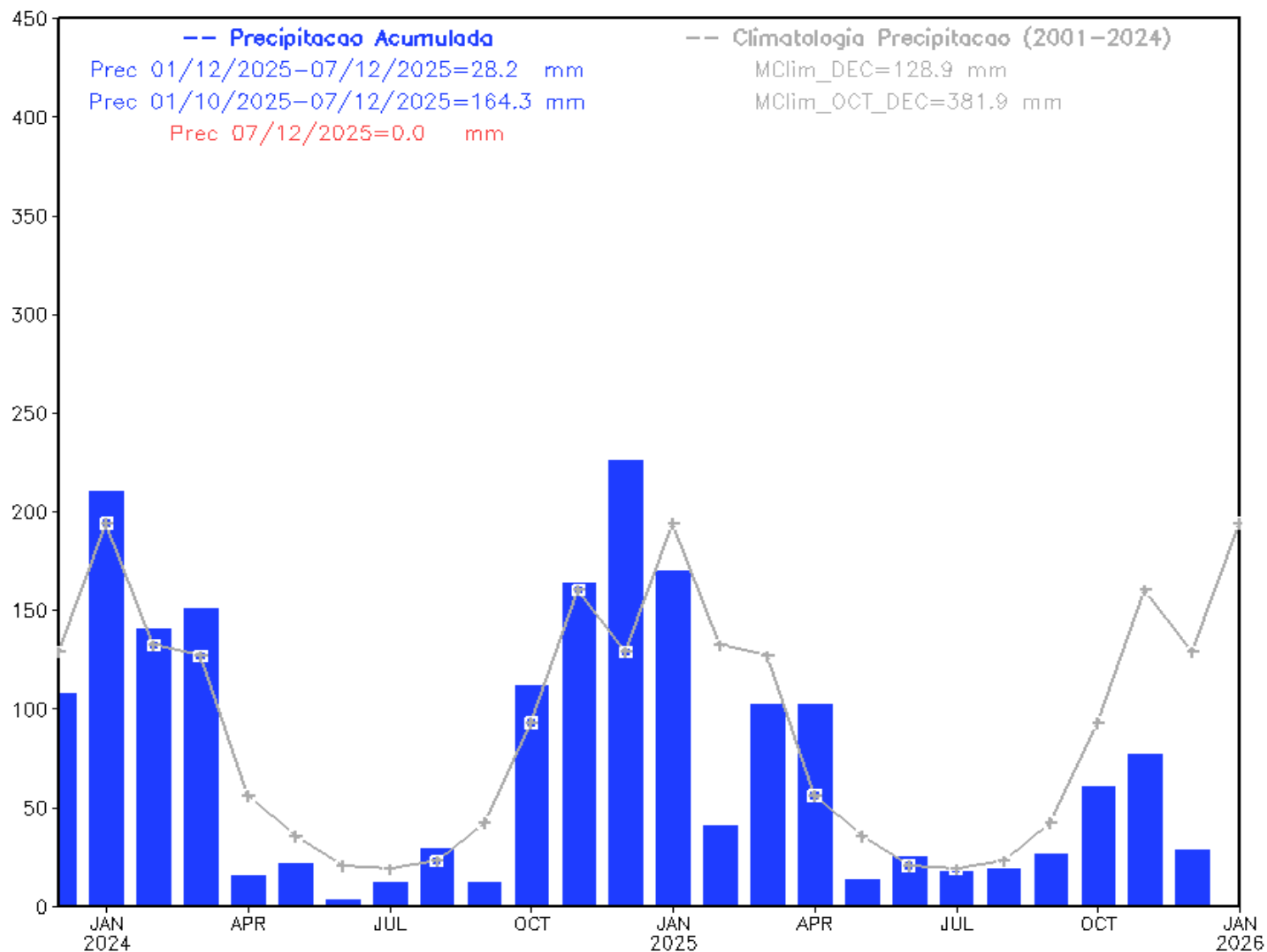


Anomalia de Precipitação (mm) A.S.  
Período: 01/10/2025 a 07/12/2025



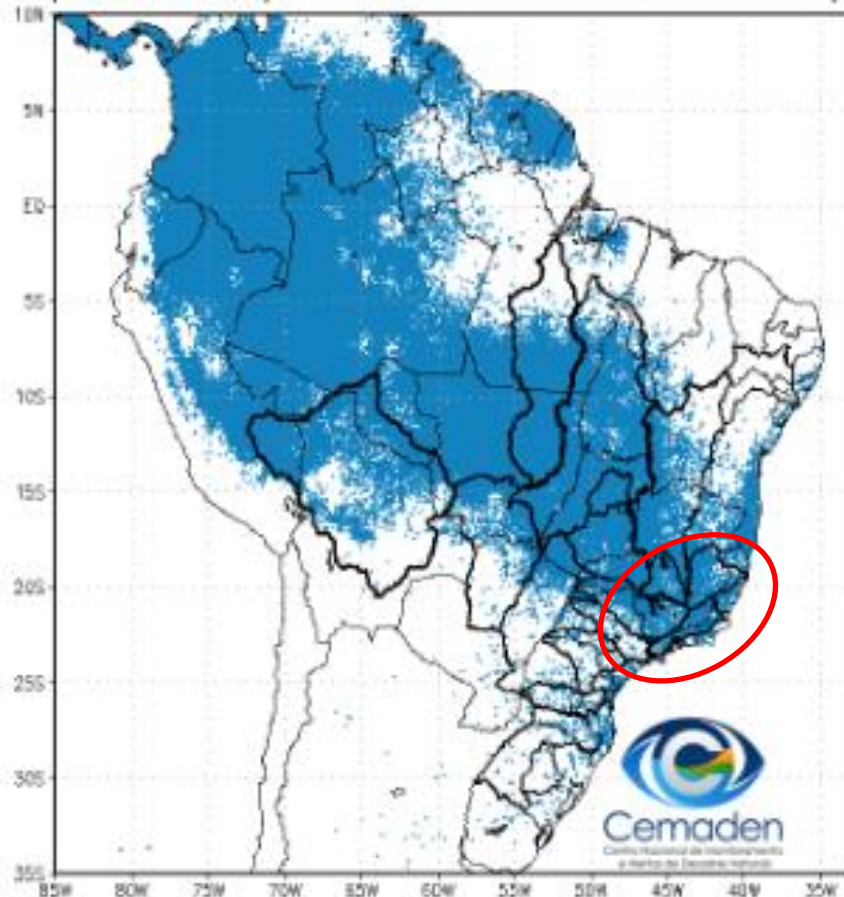
# Evolução Temporal da Precipitação

## Precipitacao Bacia do Rio Paraiba\_Sul desde DEC 2023

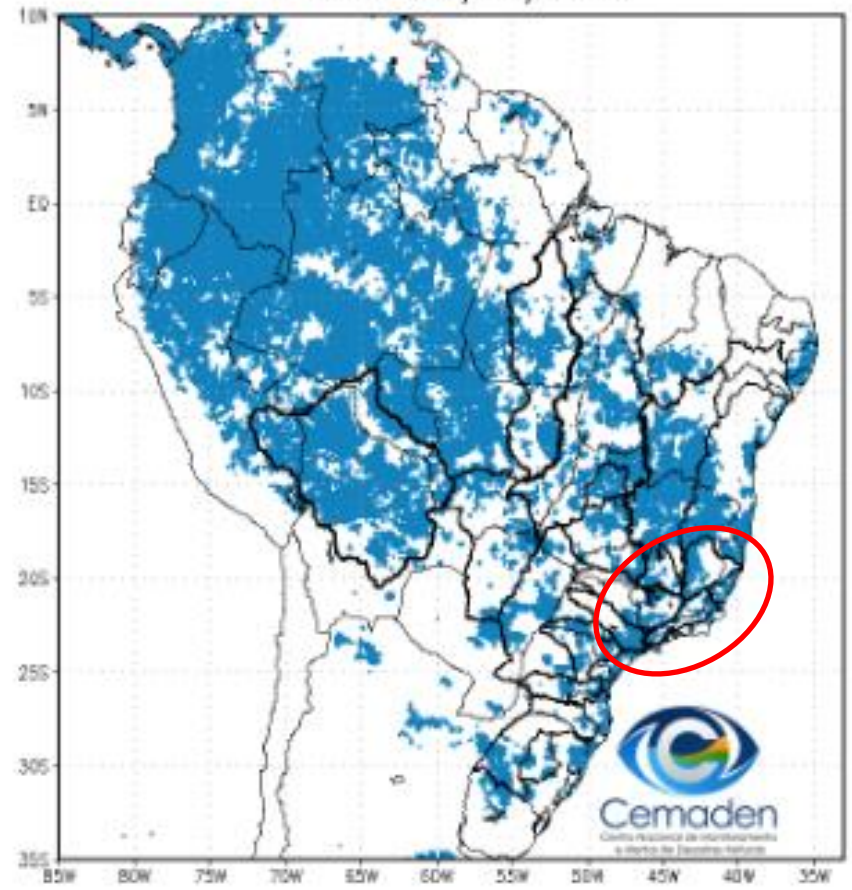


## Situação da Estação Chuvosa

Climatologia da Precipitação (2001–2024)  
Superior 3 mm/dia em 4 de 5 dias Período: 07/12



Precipitação A.S. Superior a 3 mm/dia por 4 de 5 dias  
Período: 07/12/2025

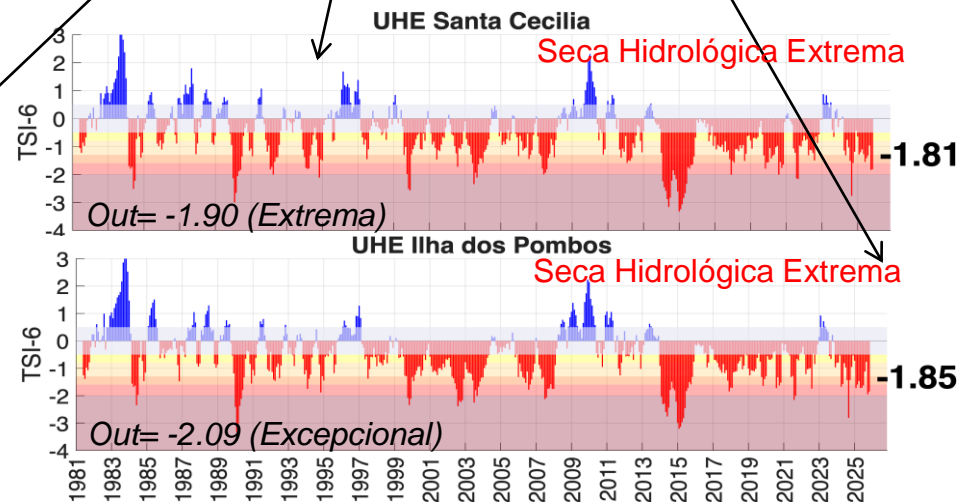
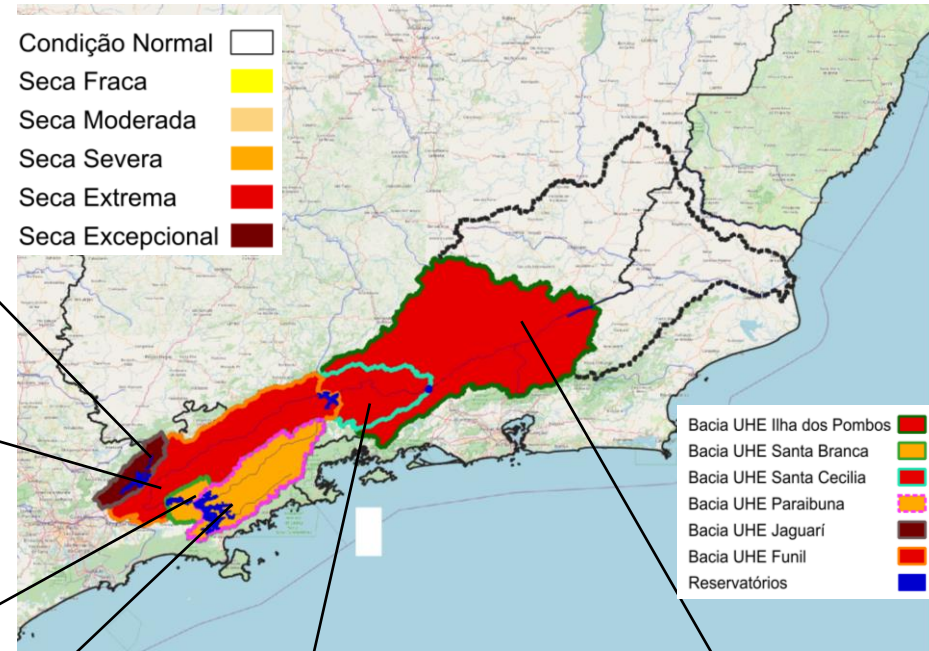
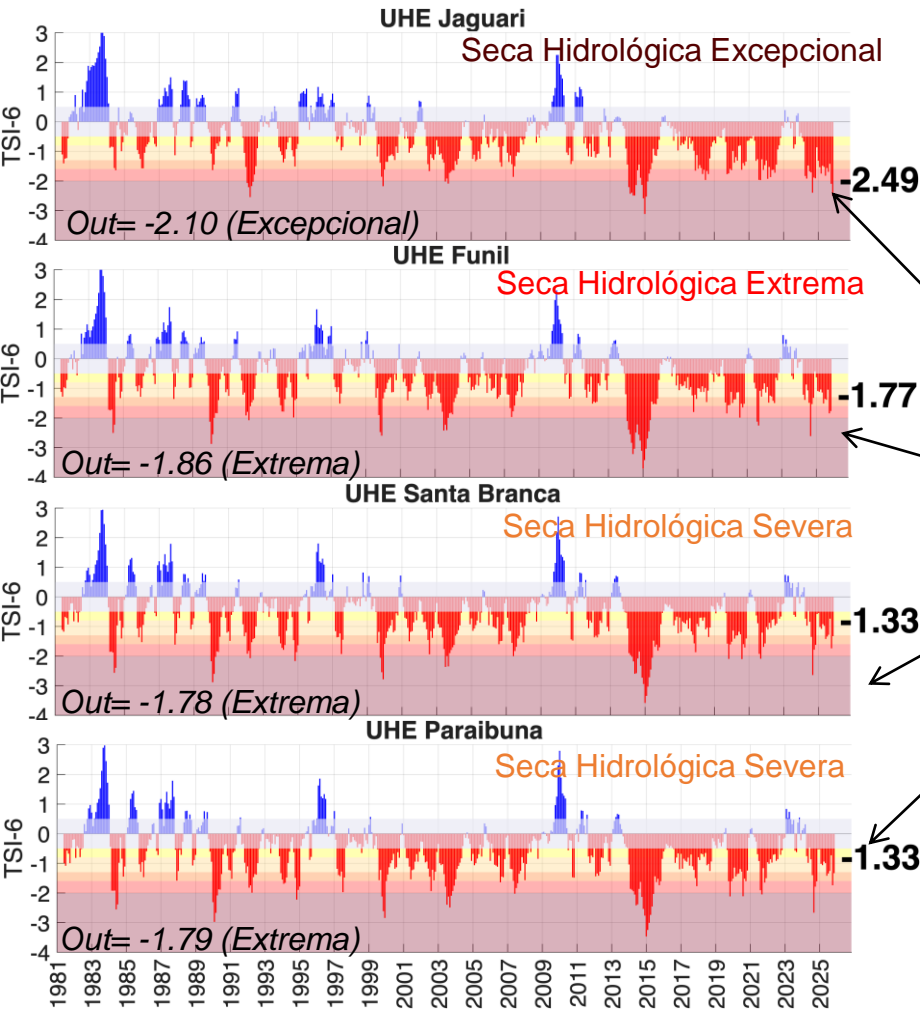




# Índice de Seca Bivariado (Chuva-Vazão) - TSI

## (Two-variate Standardized Index – Escala de 6 meses)

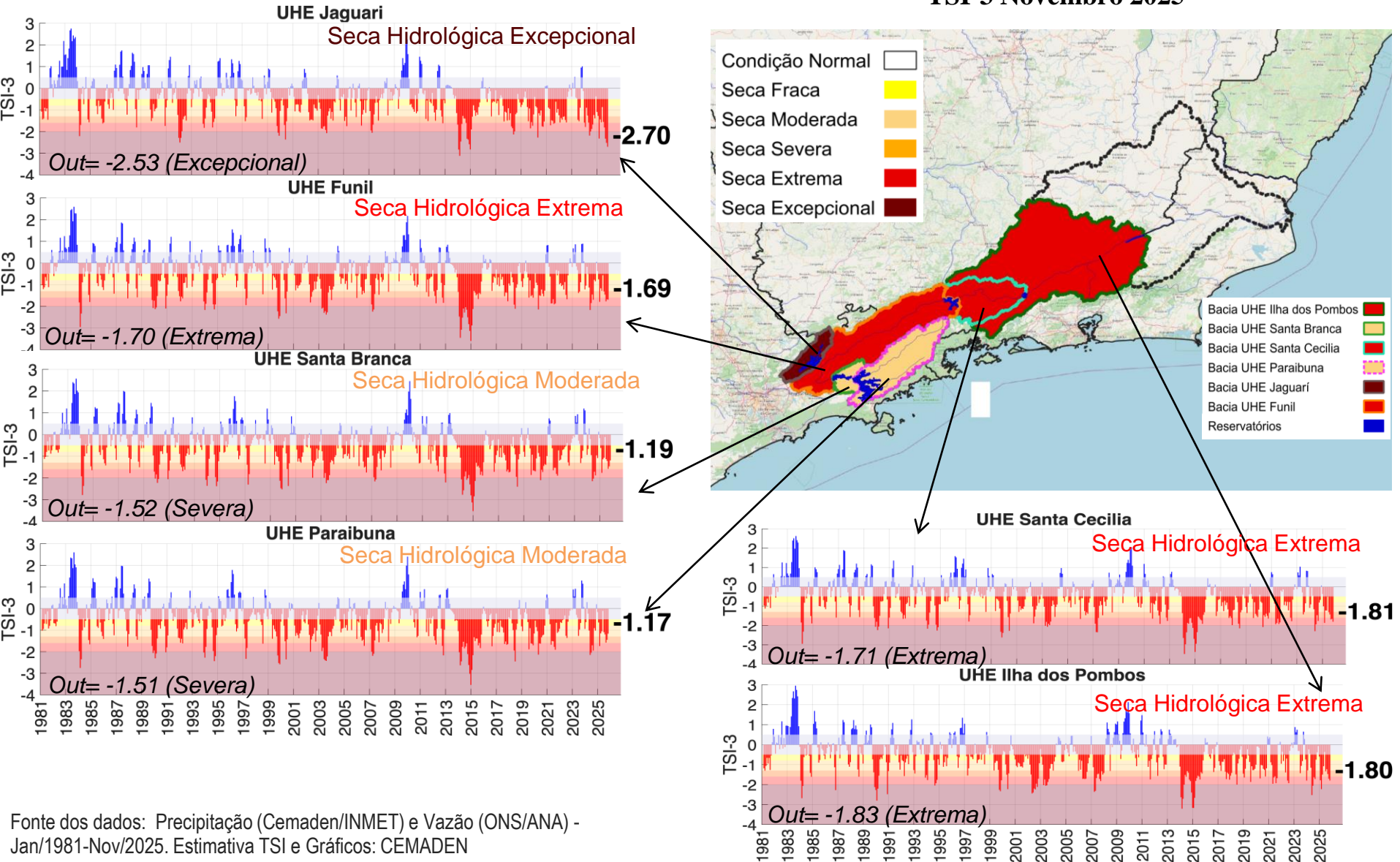
TSI-6 Novembro 2025



# Índice de Seca Bivariado (Chuva-Vazão) - TSI

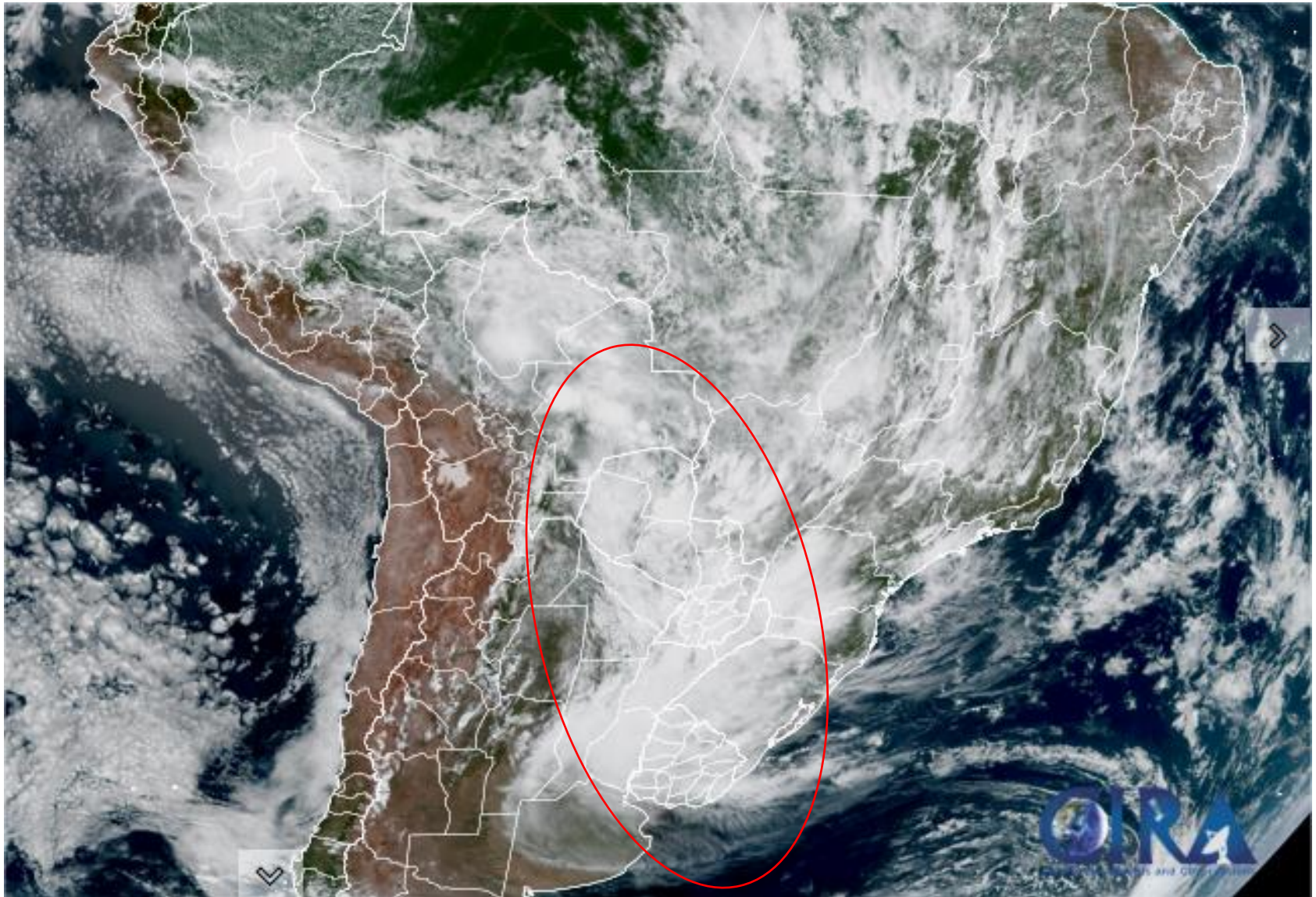
## (Two-variate Standardized Index – Escala de 3 meses)

TSI-3 Novembro 2025





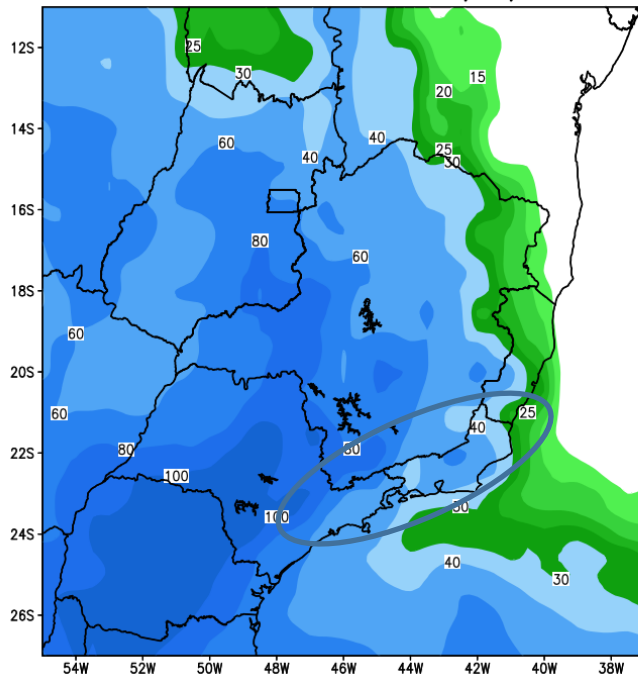
# Situação meteorológica atual



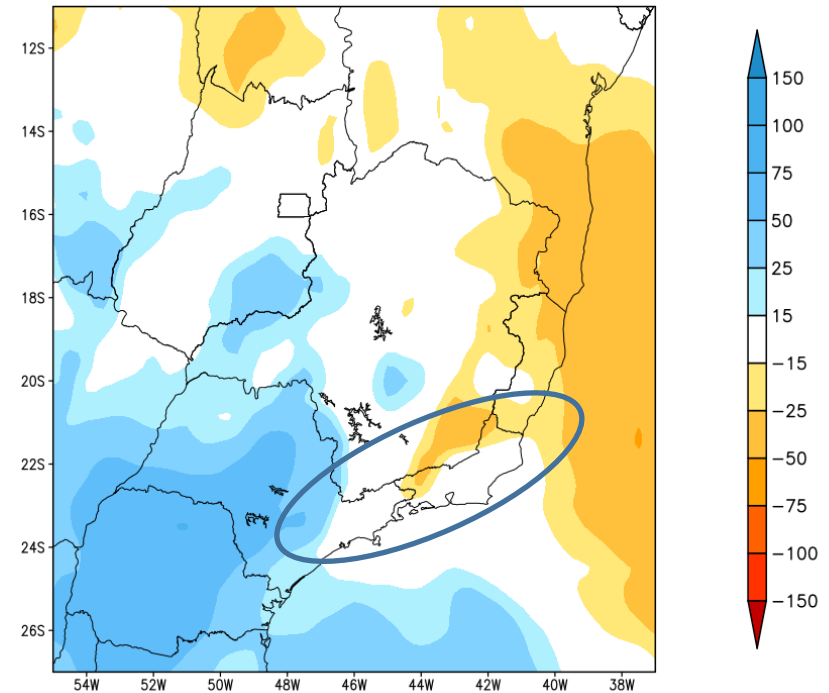


# Previsão Primeira Semana

GEFS / BRASIL\_SE  
Precipitacao acumulada 1aSem (mm)  
Previsao das 00Z dia 08/12/2025

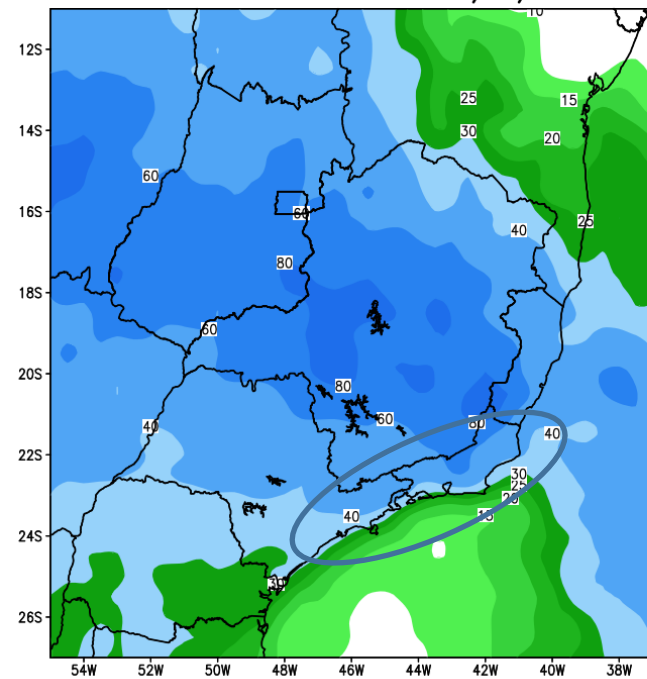


Anomalia de Precipitacao BR SE (mm)  
Periodo: 2025120800 a 2025121500

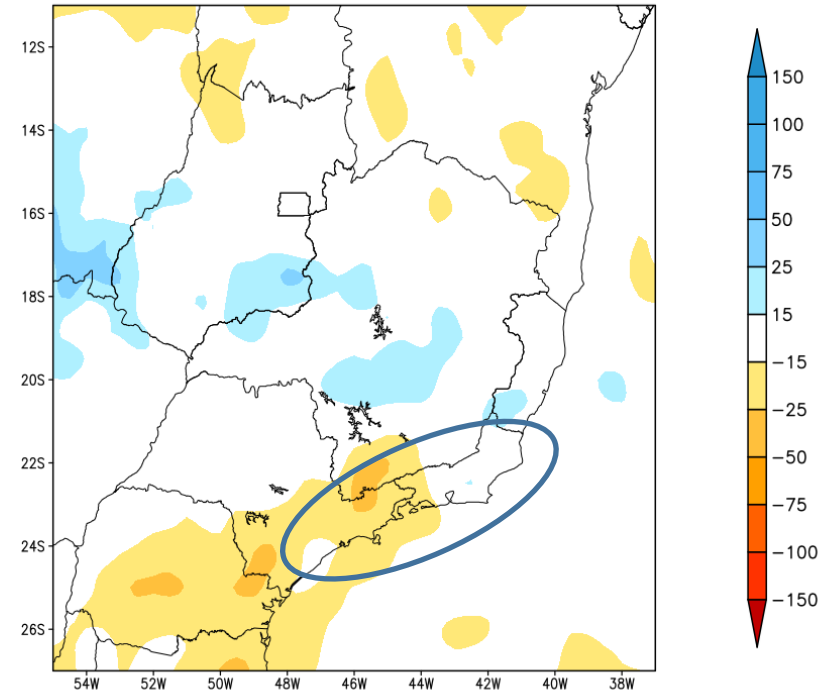


# Previsão Segunda Semana

GEFS / BRASIL\_SE  
Precipitacao acumulada 2aSem (mm)  
Previsao das 00Z dia 08/12/2025



Anomalia de Precipitacao BR\_SE (mm)  
Periodo: 2025121600 a 2025122200



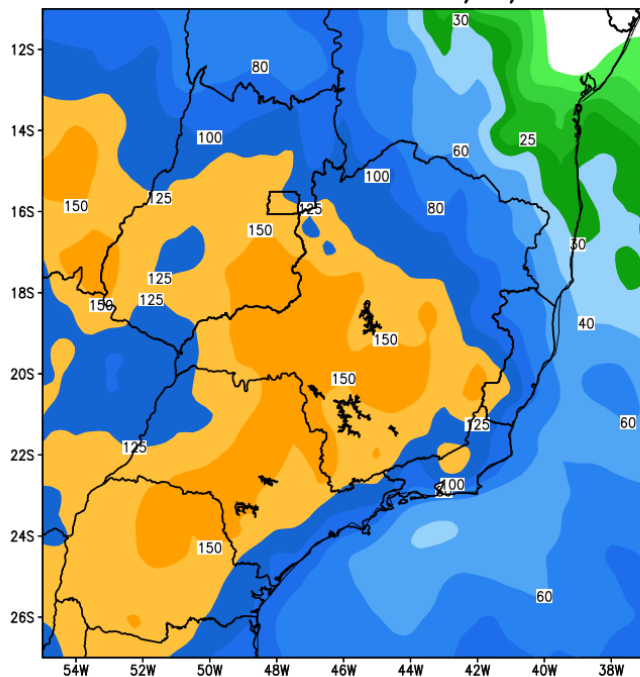


# Previsão Próximas duas Semanas

GEFS / BRASIL\_SE

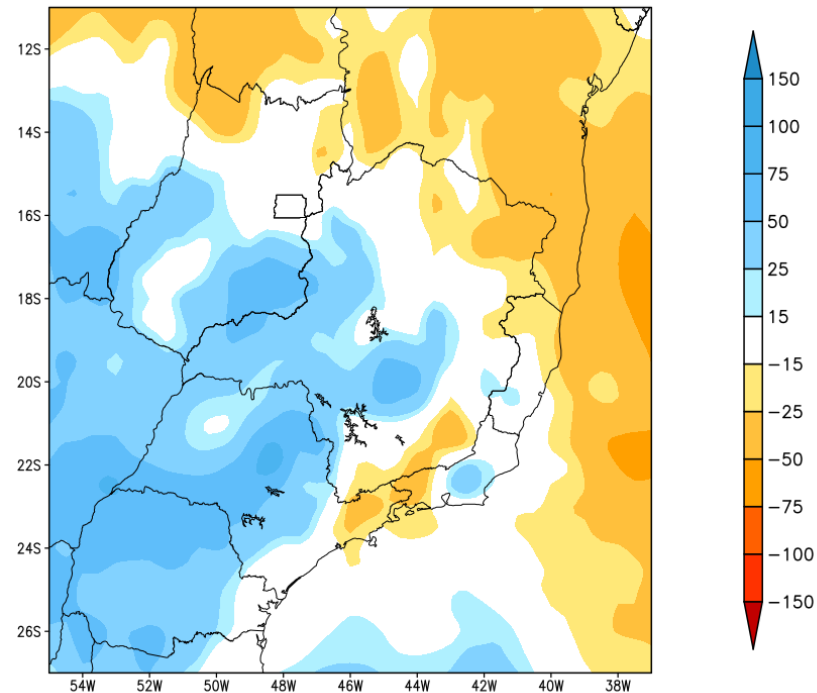
Precipitacao acumulada 14dias (mm)

Previsao das 00Z dia 08/12/2025



Anomalia de Precipitacao BR\_SE (mm)

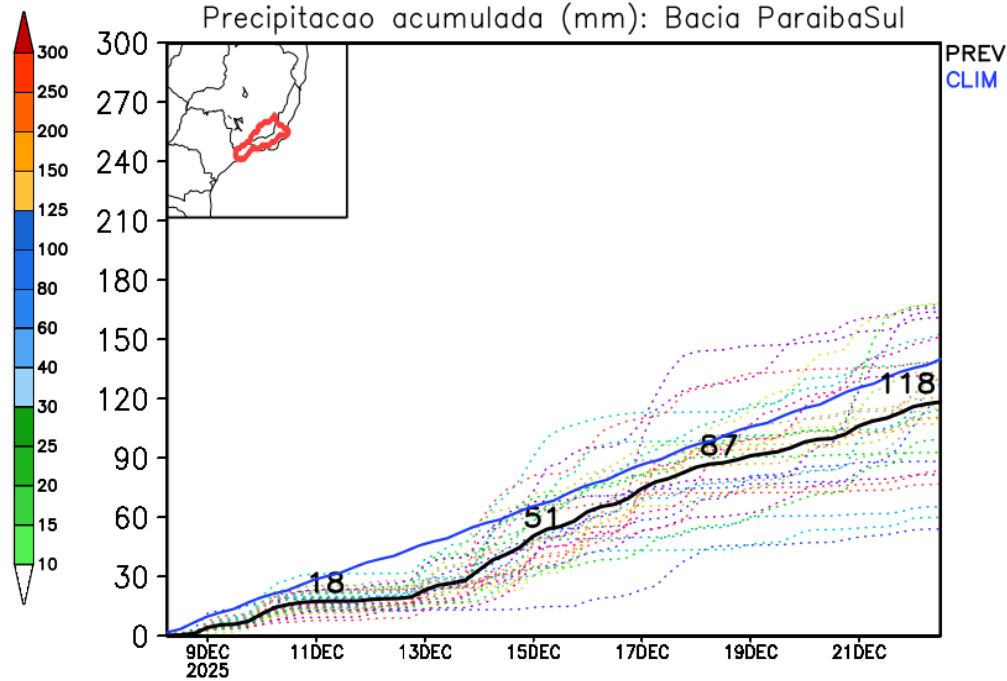
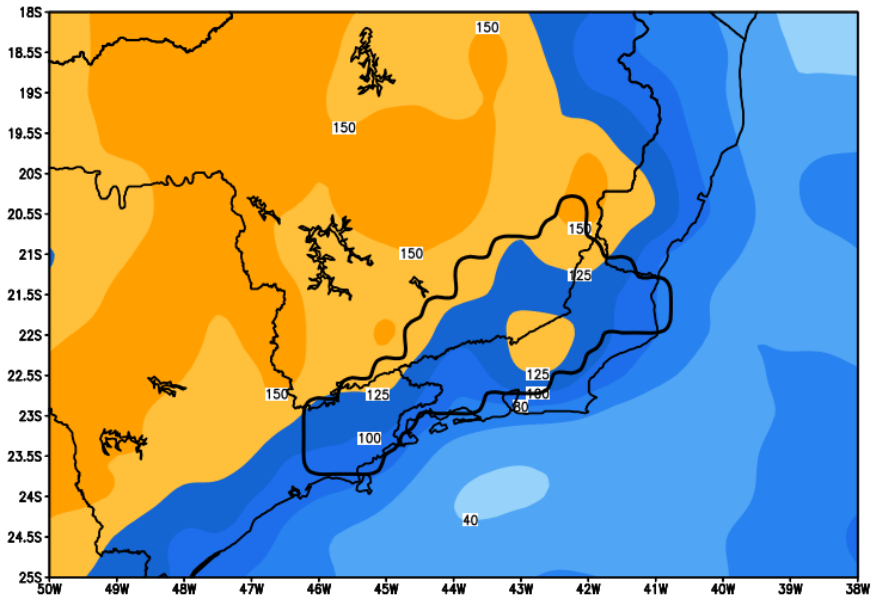
Periodo: 2025120800 a 2025122200



# Rio Paraíba do Sul

previsão de chuva em 14 dias

GEFS / Bacia do Rio Paraíba do Sul  
Precipitação acumulada em 14 dias (mm)  
Previsão das 00Z dia 08/12/2025



Modelo GEFS/NOAA



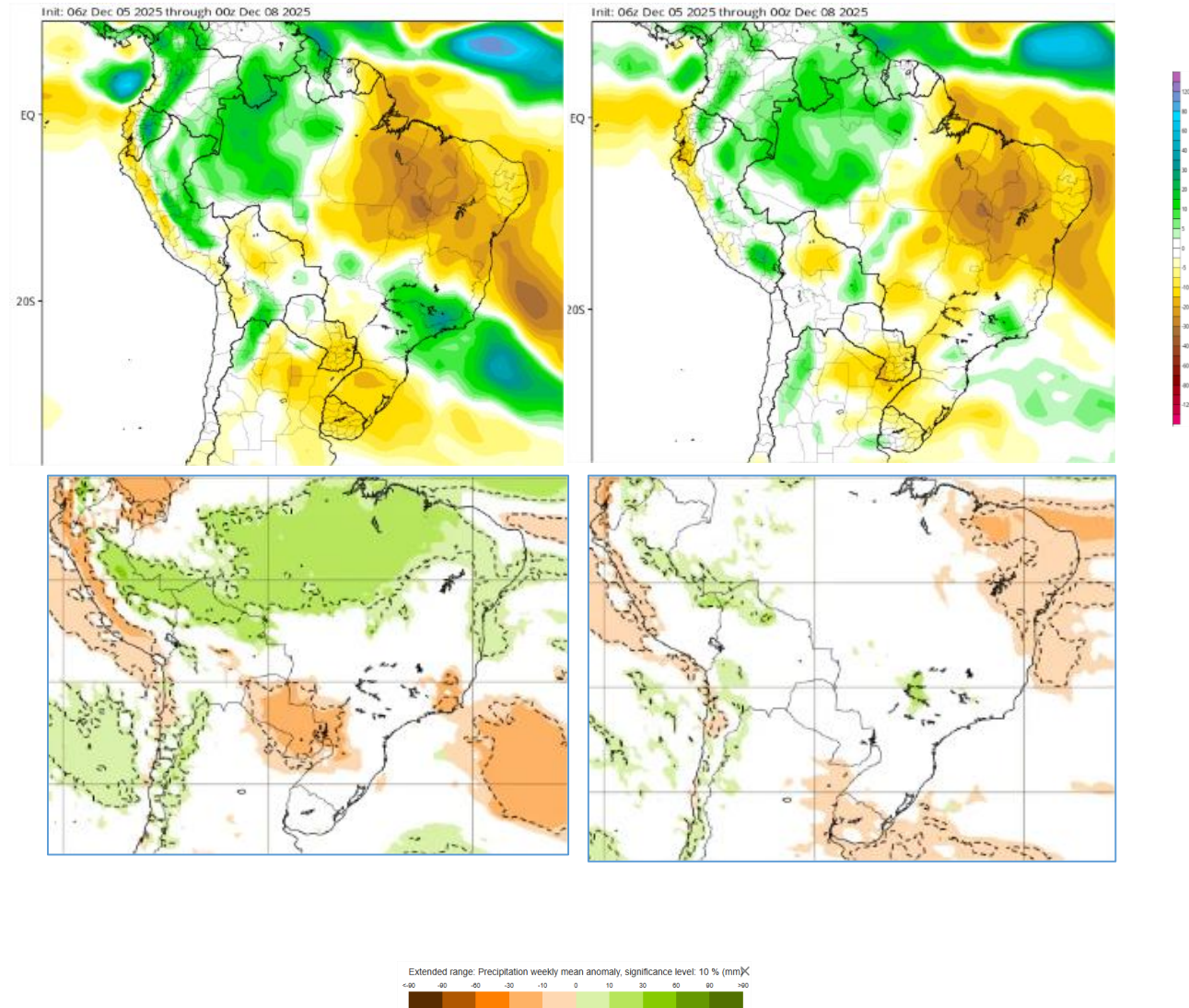
### Tendência 3a e 4a semanas

22-29 Dez

29 Dez – 05 Jan

CFS/NOAA

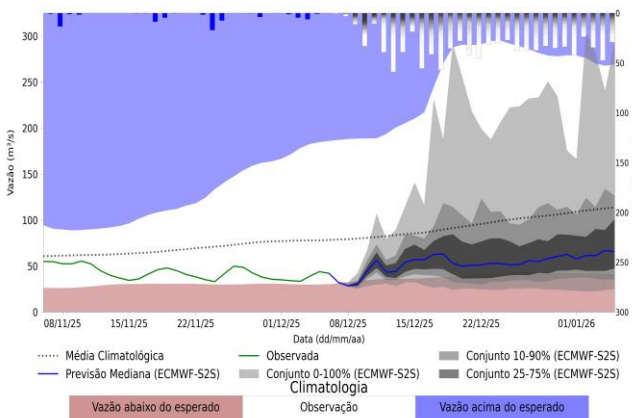
ECMWF



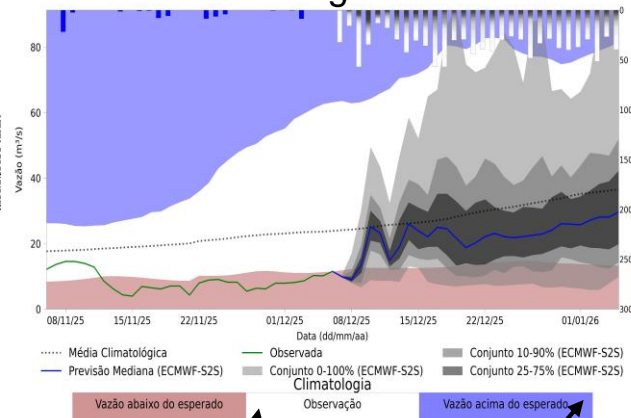
## Previsão de vazão natural na Bacia Rio Paraíba do Sul

**Previsão: 06/12/2025 a 05/01/2026**

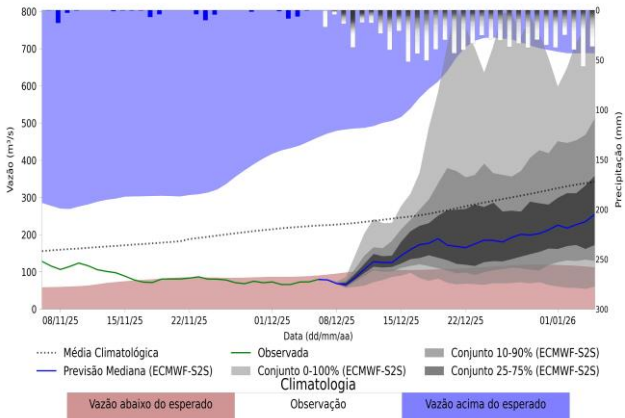
UHE Santa Branca



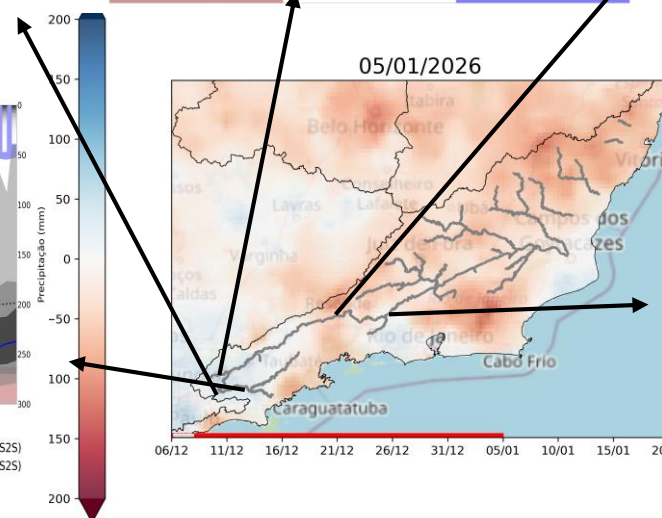
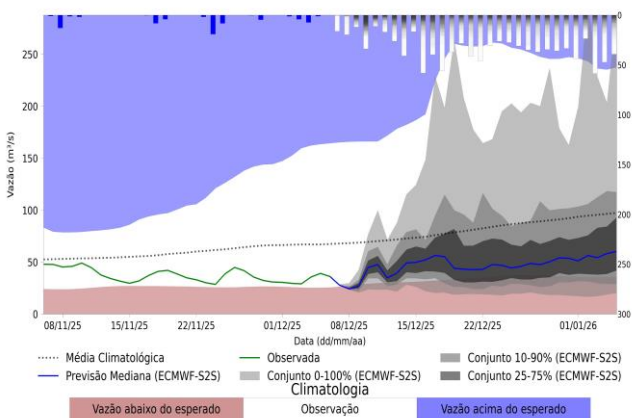
UHE Jaguari



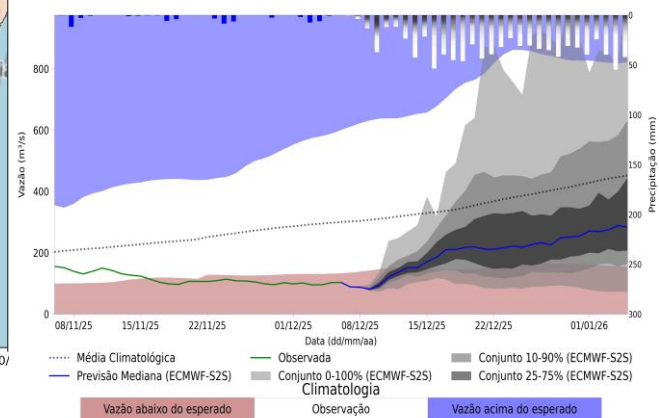
UHE Funil



UHE Paraibuna



UHE Santa Cecília

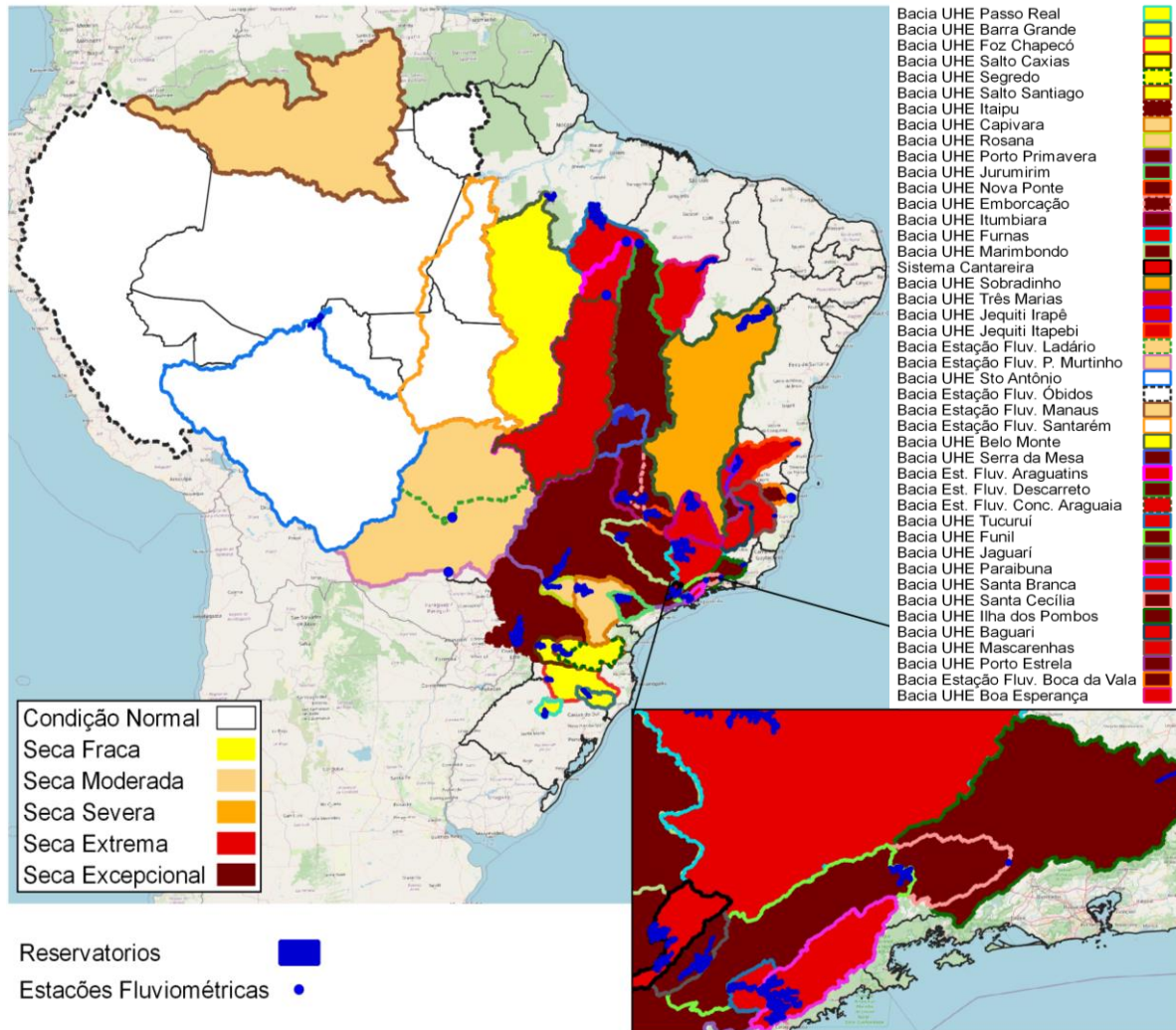




# Índice de Seca Bivariado (Chuva-Vazão) - TSI

## (Two-variate Standardized Index – Escala de 6 meses)

### Previsão Próximos 30 dias



#### Agravamento da seca:

- Paraibuna (Sev.-> Ext.)
- Santa Branca (Sev.-> Ext.)
- Funil (Ext. -> Excep.)
- Santa Cecília (Ext. -> Excep.)
- Ilha Pombos (Ext. -> Excep.)

#### Estabilidade da seca:

- Jaguari (Excepcional)

Fonte: CEMADEN/MCTI

Previsão de Precipitação: *Climate Forecast System (CFS)*

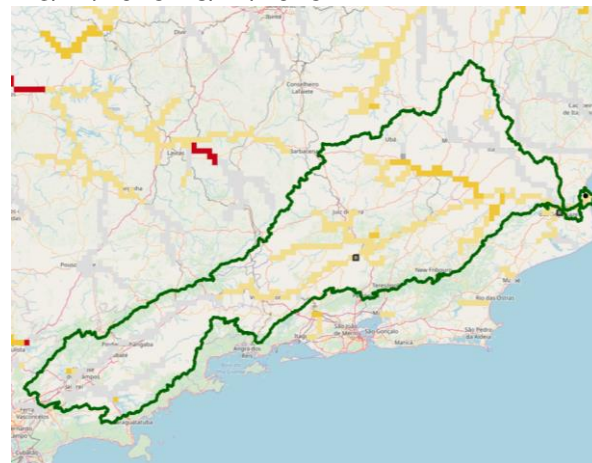
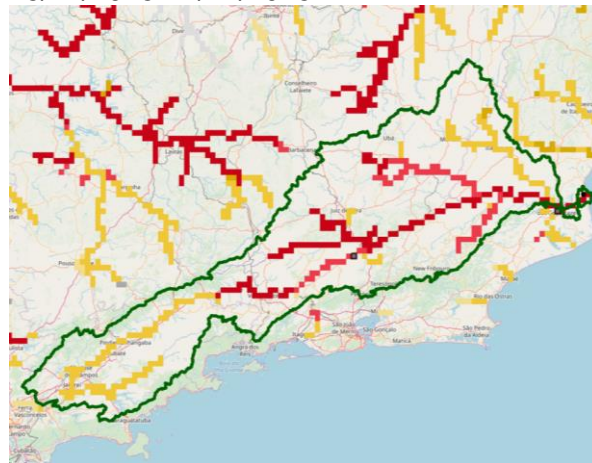
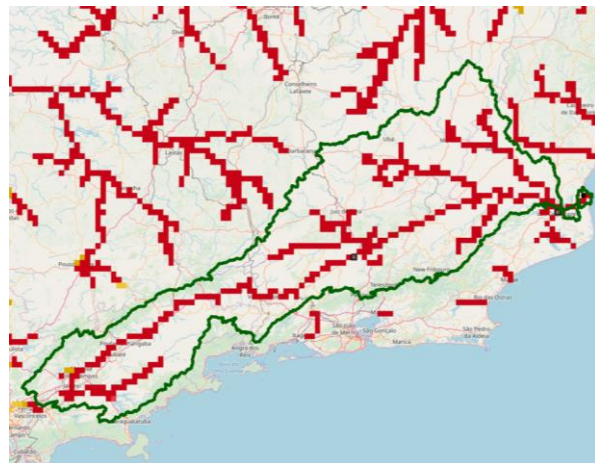
# Previsão Sub-sazonal de vazões (45 dias) para a Bacia do Rio Paraíba do Sul (Sistema Global de Previsão de Vazão - GloFAS)

Previsão: 08/12/2025 – 19/01/2026

08/12/2025-14/12/2025

15/12/2025-22/12/2025

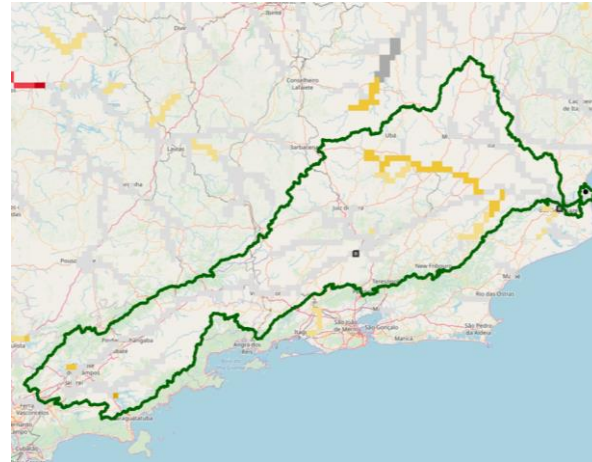
23/12/2025-28/12/2025









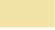


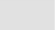


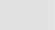


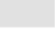
29/12/2025-04/01/2026

05/01/2026-11/01/2026

12/01/2026-19/01/2026



 Bacia Rio paraíba do Sul

Categoria de anomalia de vazões (percentil)	Categoria de incerteza		
	Baixa (0-10)	Média (10-20)	Alta (<20)
Muito abaixo (1-10)			
Abaixo (10-25)			
Média (25-75)			
Acima (75-90)			
Muito acima (90-100)			

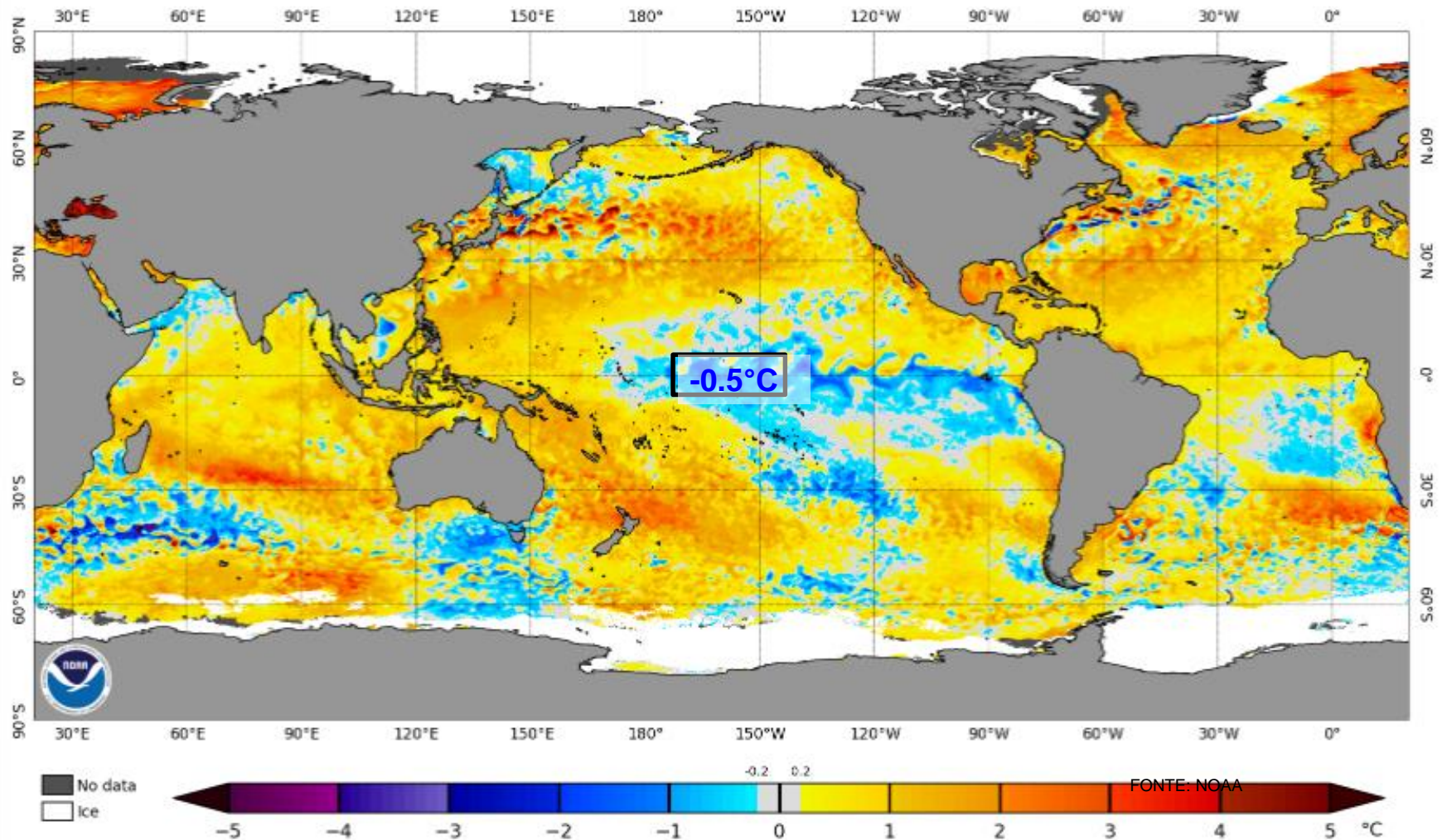
Fonte: Previsão Meteorológica: ECMWF  
Previsão de vazão: Lisflood/GloFAS Forecast  
<https://www.globalfloods.eu/glofas-forecasting/>





Status Atual: La Niña

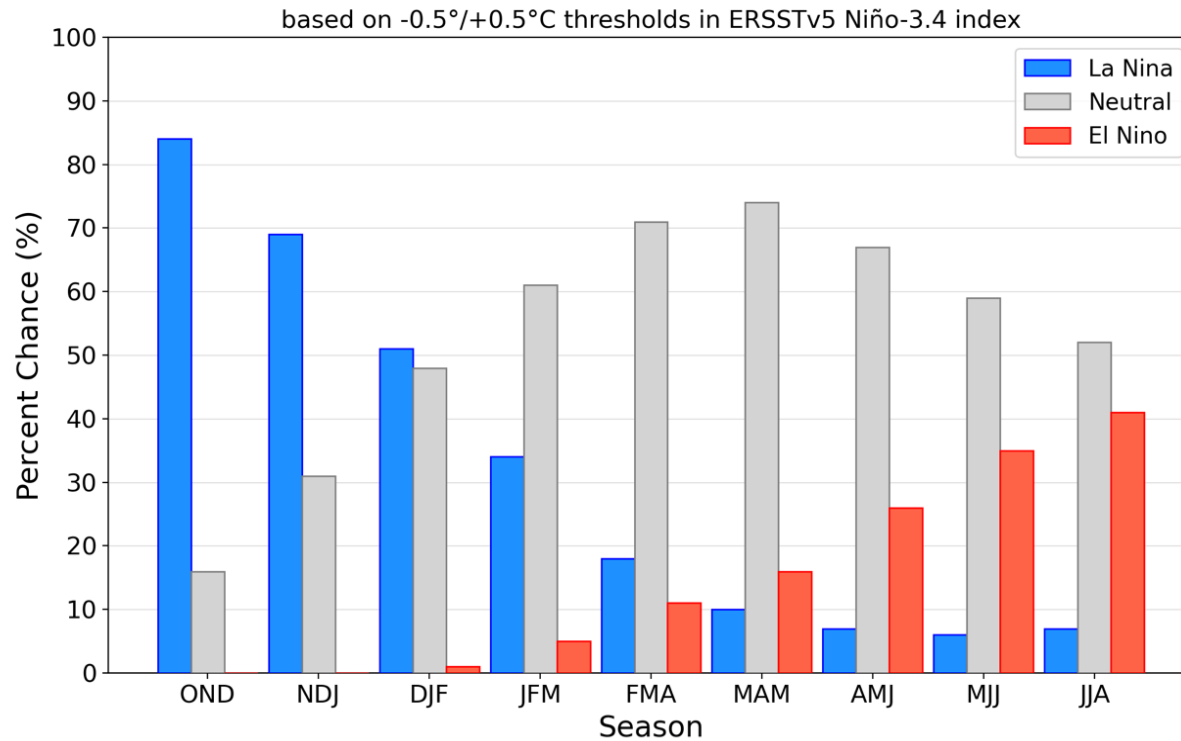
NOAA Coral Reef Watch Daily 5km SST Anomalies (v3.1) 7 Dec 2025





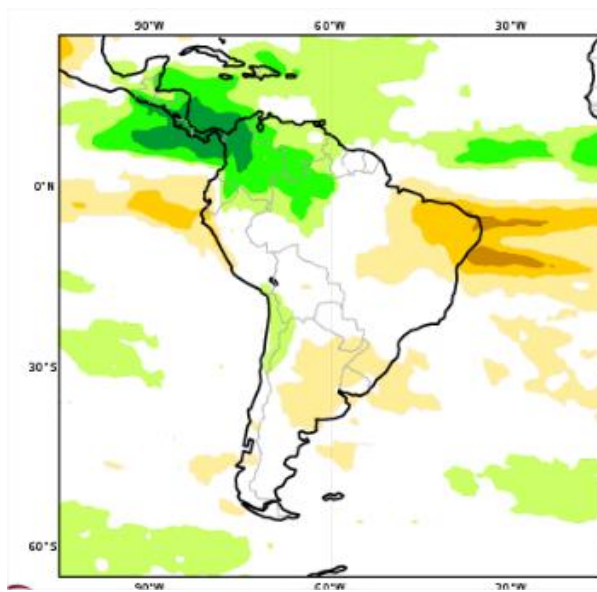
## Previsão do “ENSO”

### Official NOAA CPC ENSO Probabilities (issued November 2025)

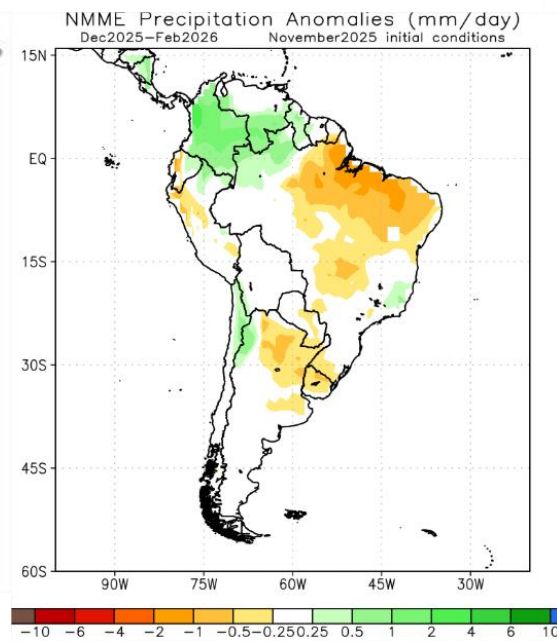


# Previsão Sazonal de Chuva Multi-Modelo

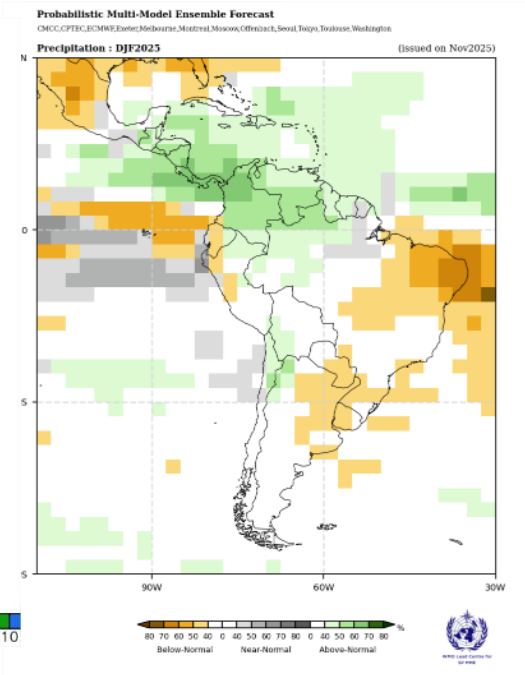
Dezembro-Janeiro-Fevereiro



Modelos Europeus



Modelos Norte Americanos



Modelos da WMO