



# CEMADEN

**Centro Nacional de Monitoramento e  
Alertas de Desastres Naturais**

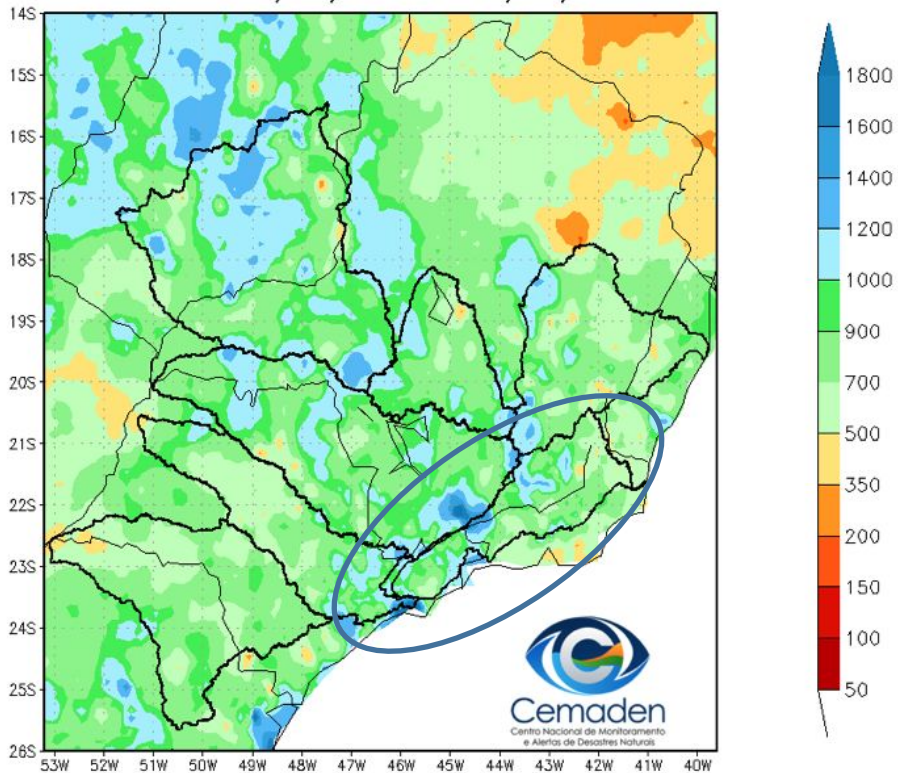
## Monitoramento e Previsões de Chuva para a Bacia do Rio Paraíba do Sul

**08 de Abril de 2025**

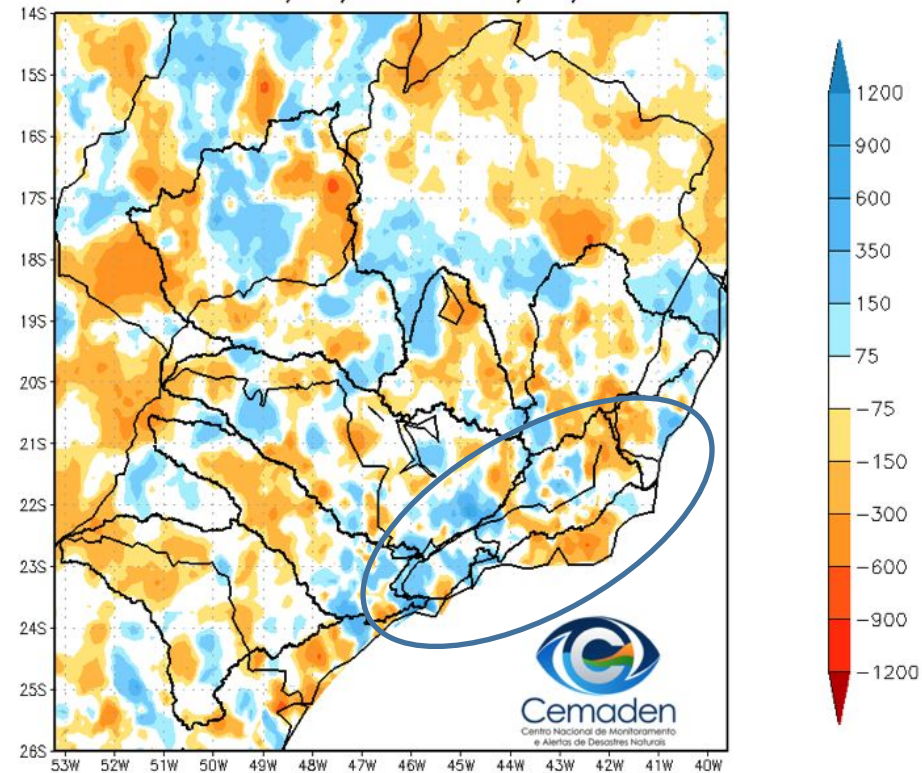


# Precipitação acumulada no ano hidrológico

Precipitação Acumulada (mm) A.S.  
Período: 01/10/2024 a 07/04/2025



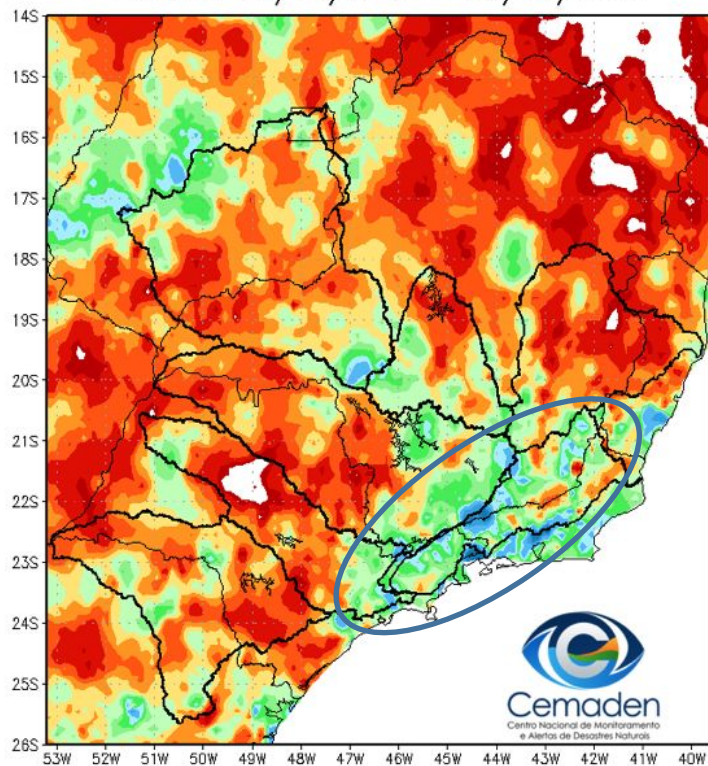
Anomalia de Precipitação (mm) A.S.  
Período: 01/10/2024 a 07/04/2025



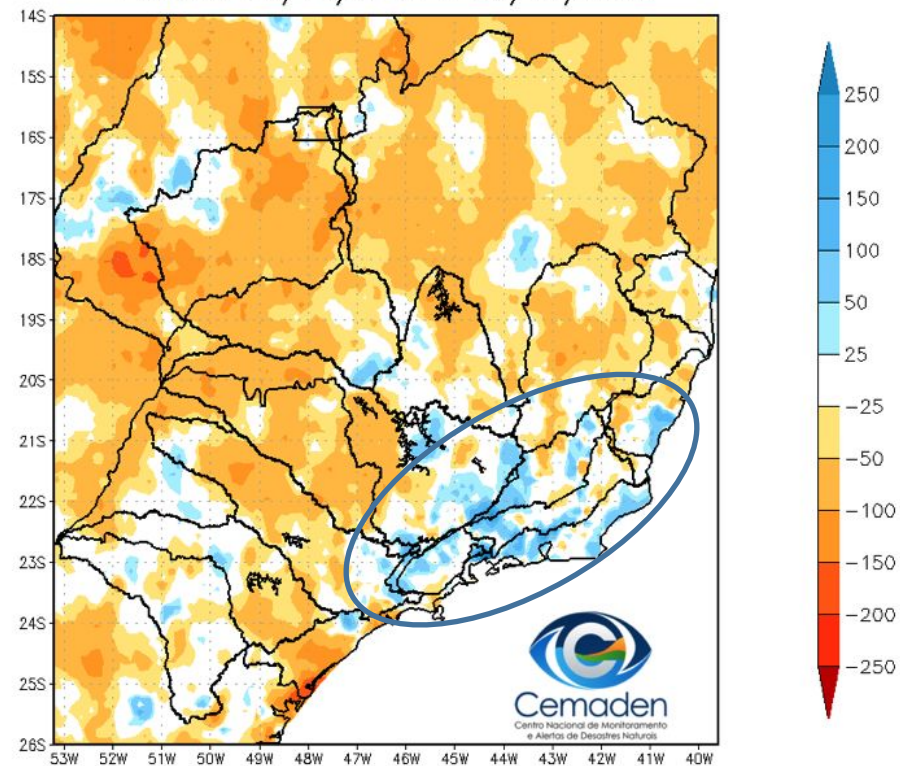


# Precipitação acumulada nos últimos 30 dias

Precipitação Acumulada (mm) A.S.  
Período: 08/03/2025 a 07/04/2025

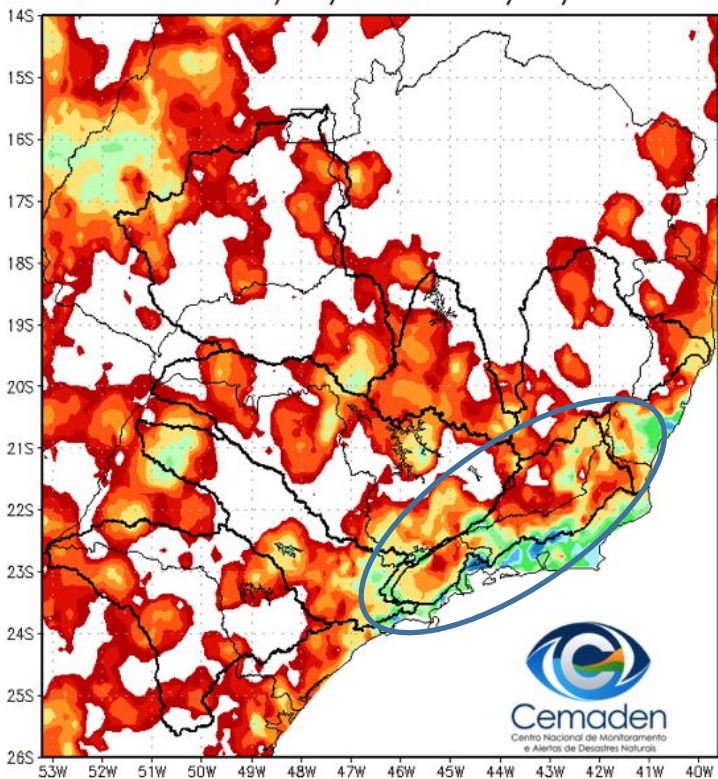


Anomalia de Precipitação (mm) A.S.  
Período: 08/03/2025 a 07/04/2025

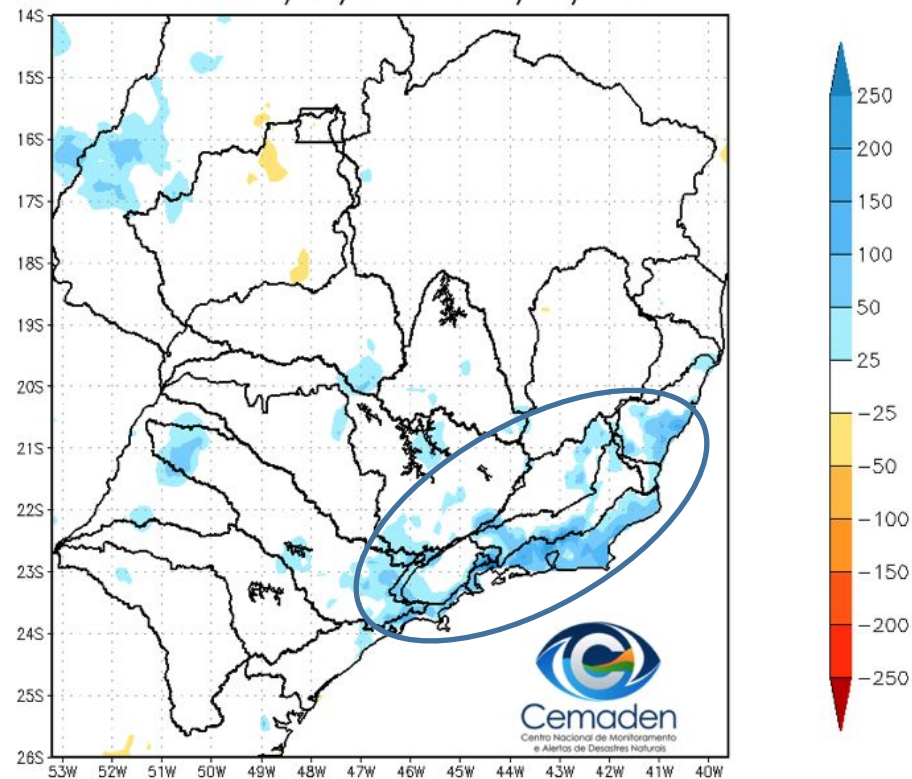


## Precipitação acumulada nos últimos 07 dias

Precipitação Acumulada (mm) A.S.  
Período: 31/03/2025 a 07/04/2025



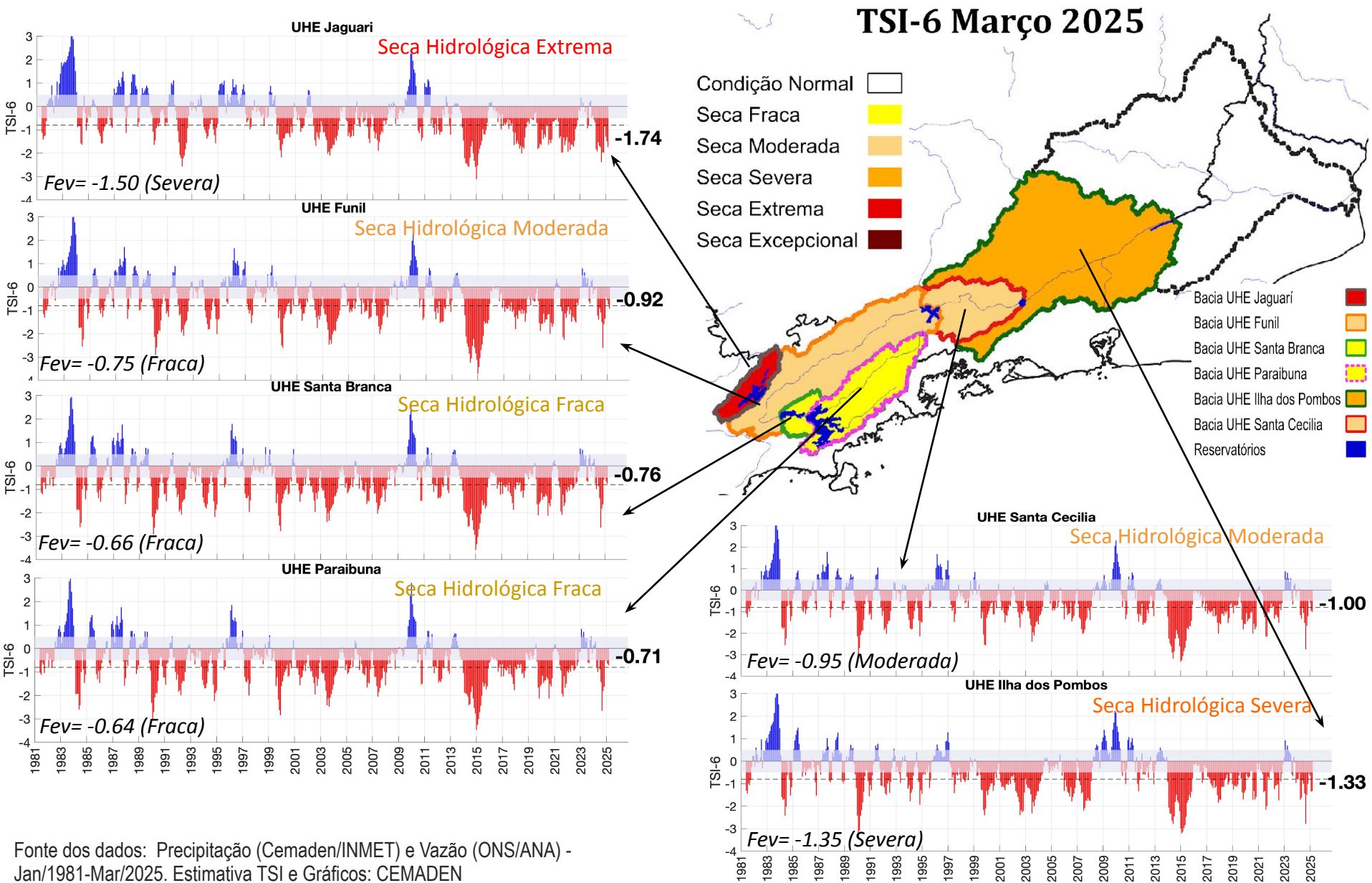
Anomalia de Precipitação (mm) A.S.  
Período: 31/03/2025 a 07/04/2025





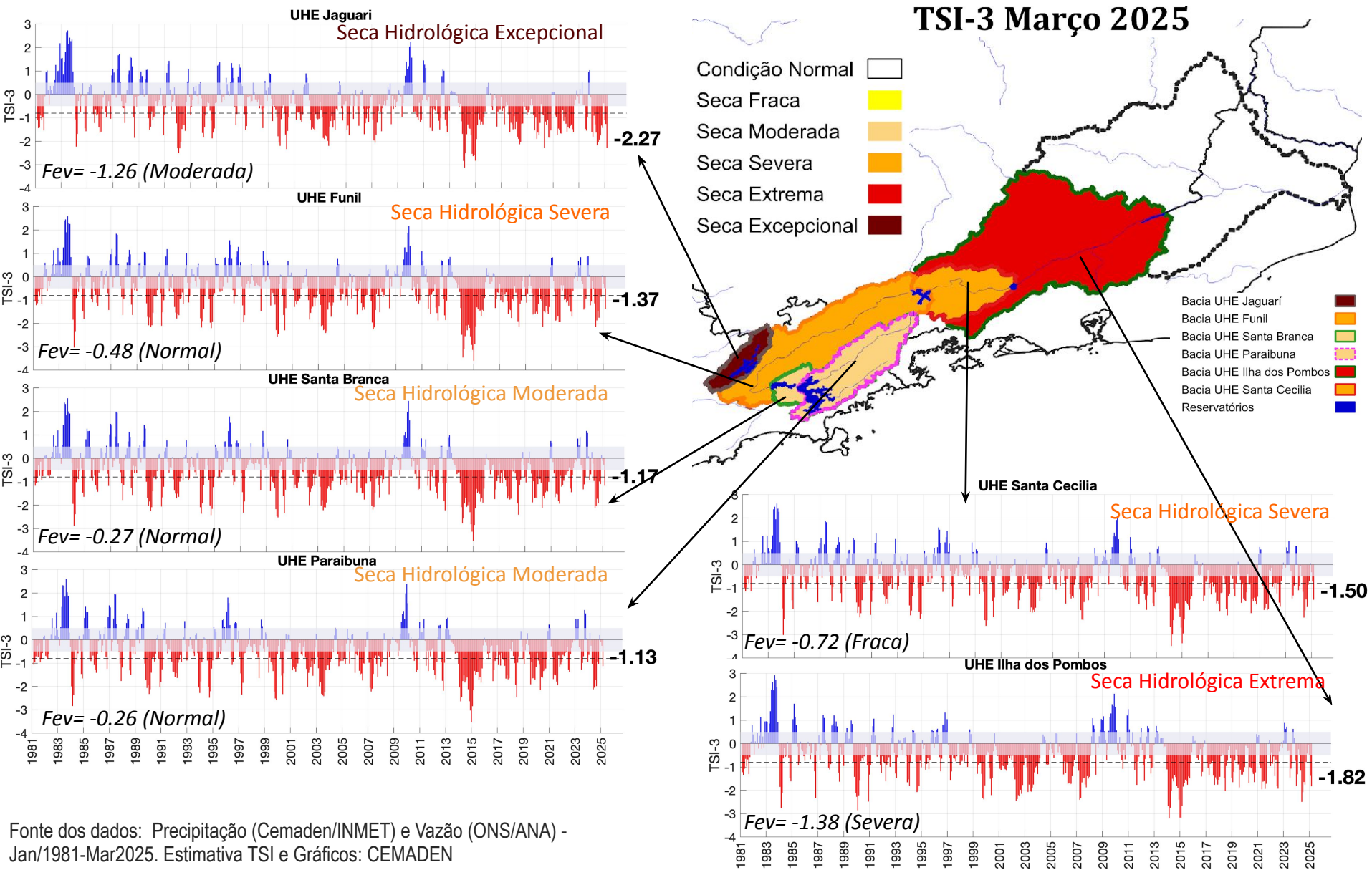
# Índice de Seca Bivariado (Chuva-Vazão) - TSI

## (Two-variate Standardized Index – **Escala de 6 meses**)



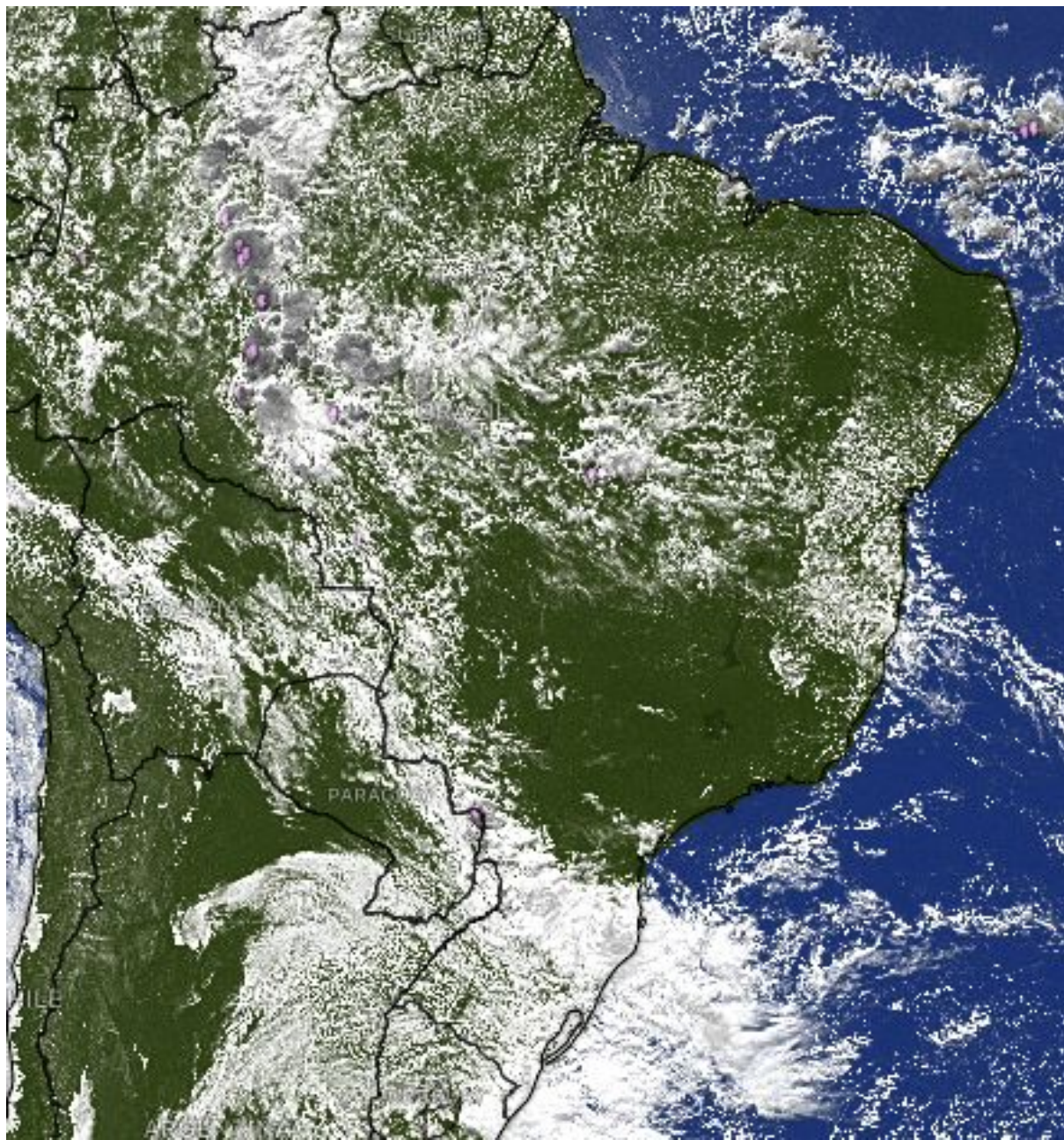
# Índice de Seca Bivariado (Chuva-Vazão) - TSI

## (Two-variate Standardized Index – **Escala de 3 meses**)



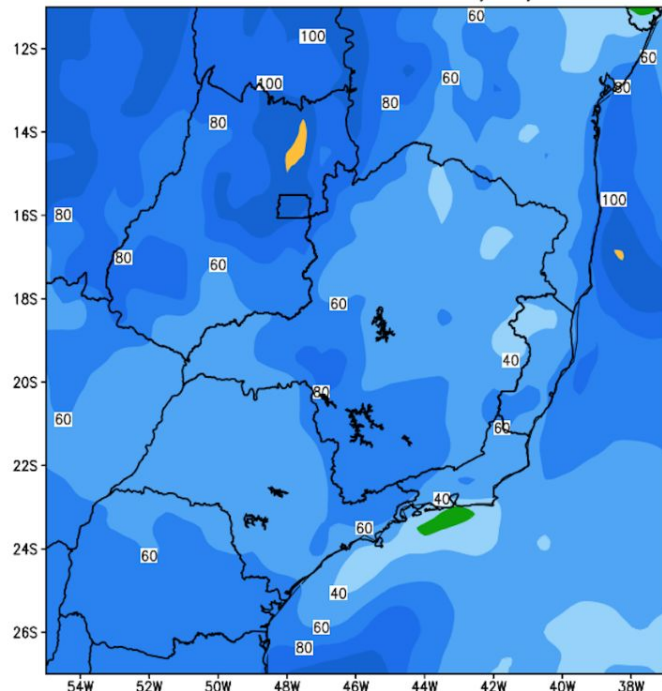


# Situação meteorológica atual

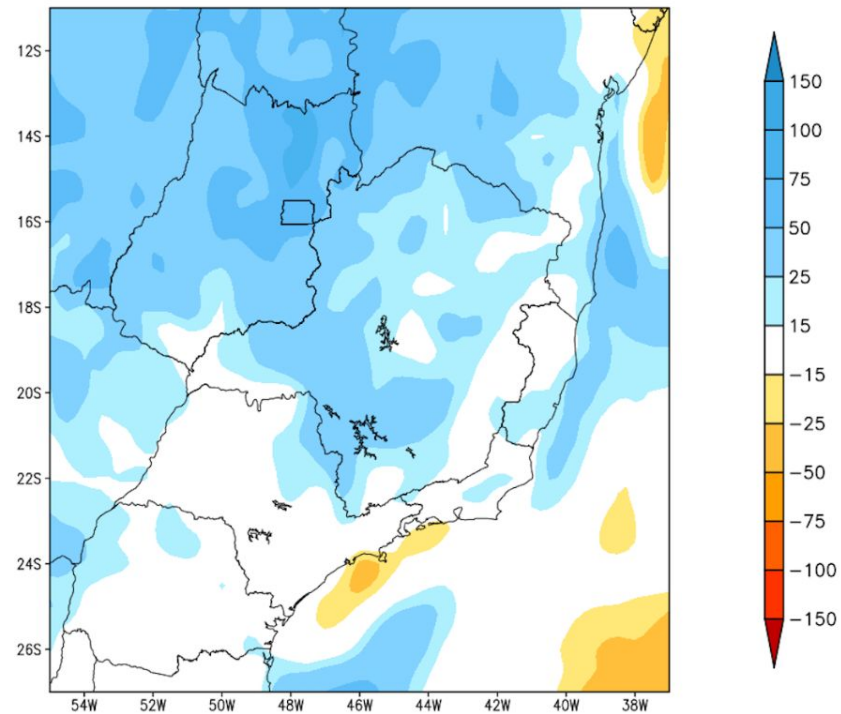


# Previsão de chuva para 12 semanas

GEFS / BRASIL\_SE  
Precipitação acumulada 14 dias (mm)  
Previsão das 00Z dia 08/04/2025



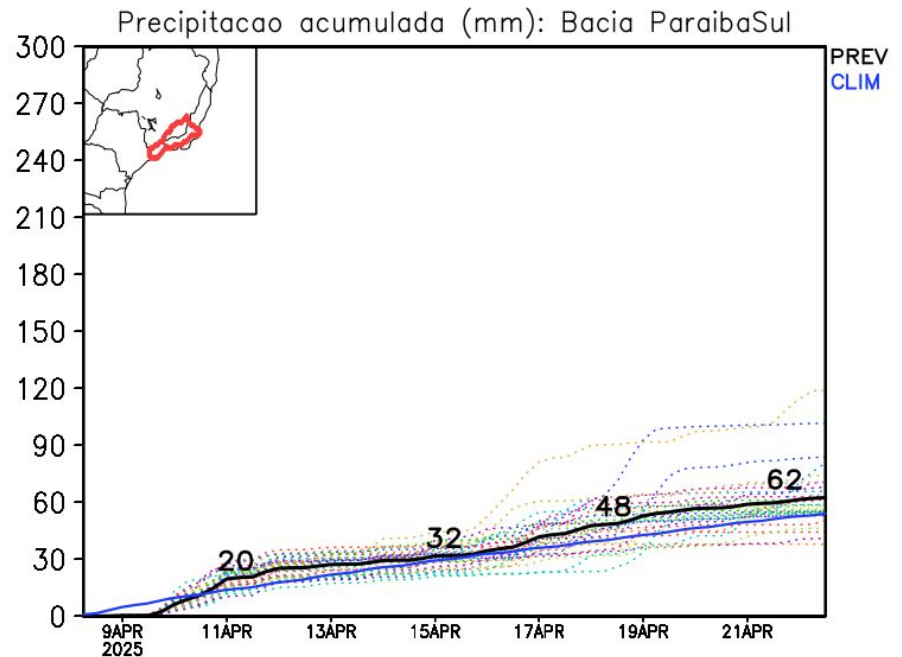
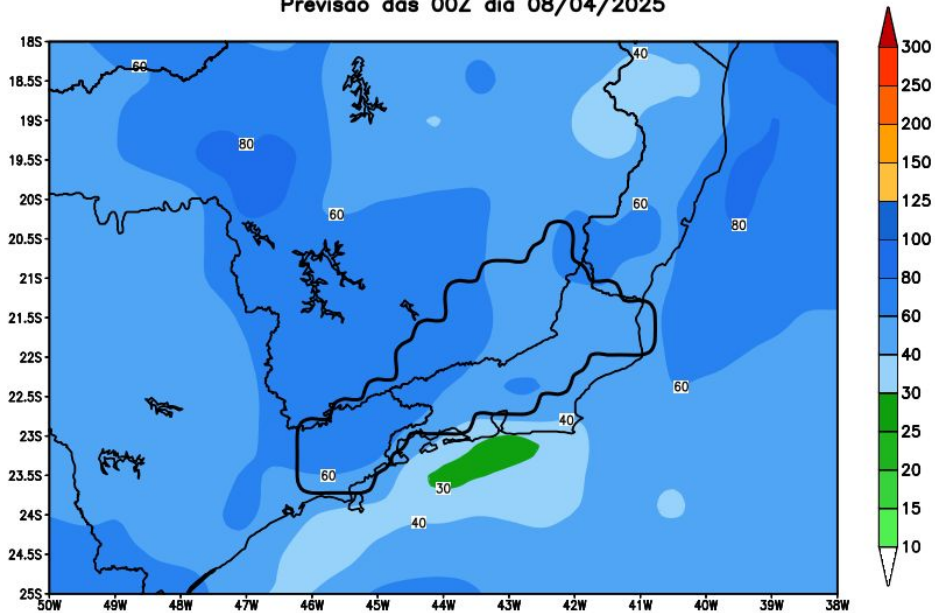
Anomalia de Precipitação BR\_SE (mm)  
Período: 2025040800 a 2025042200





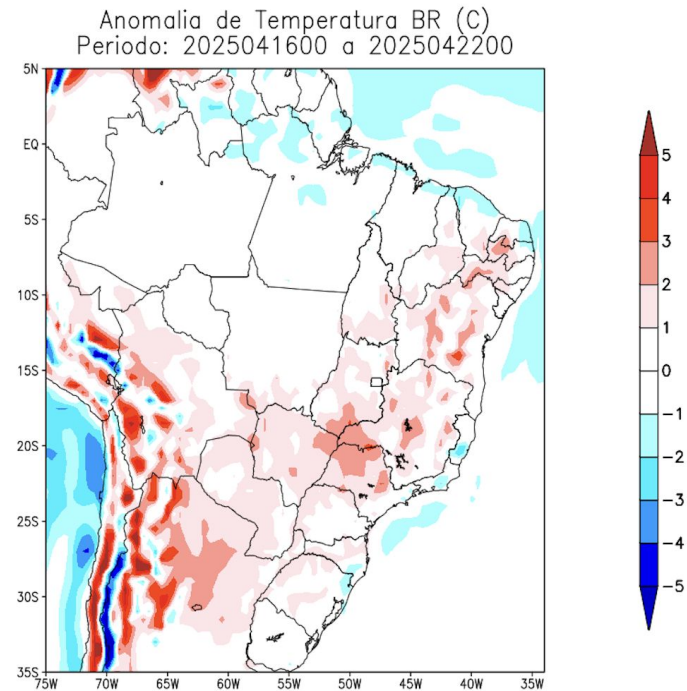
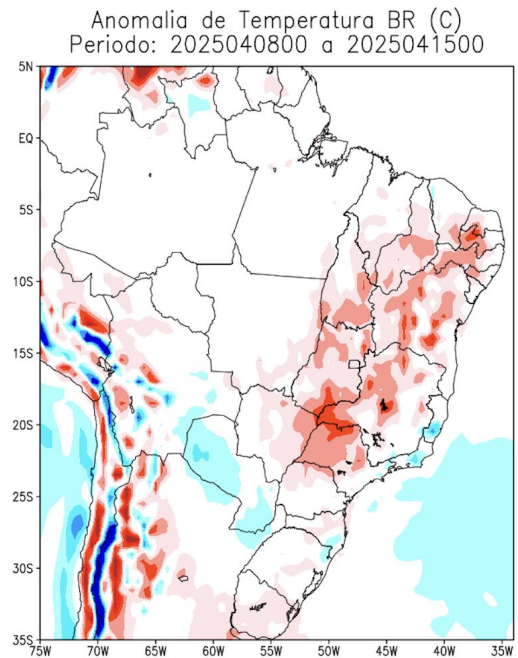
# Rio Paraíba do Sul

GEFS / Bacia do Rio Paraíba do Sul  
Precipitação acumulada em 14 dias (mm)  
Previsão das 00Z dia 08/04/2025



Modelo GEFS/NOAA

# Previsão de Temperatura para as próximas duas semanas

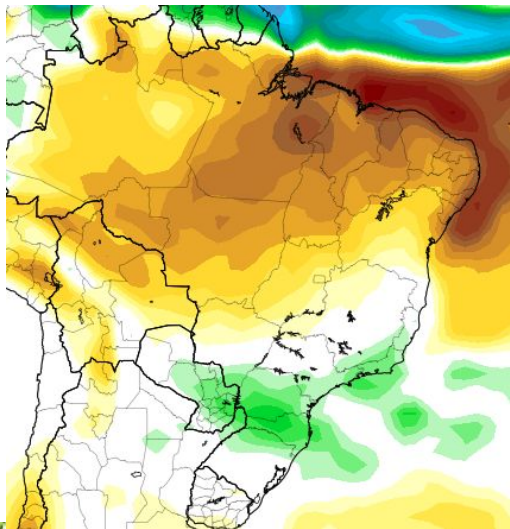




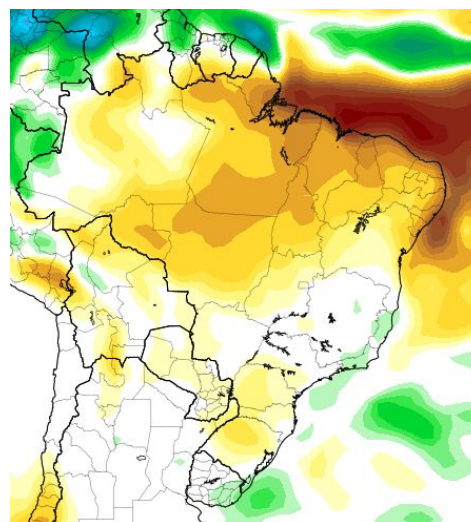
# Anomalia de Chuva 3a e 4a semanas

CFS/NOAA

22 - 28 Abr

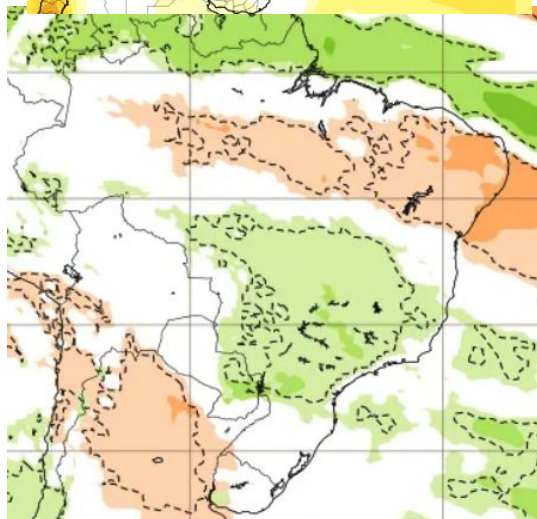


29-05 Maio

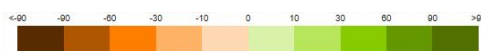
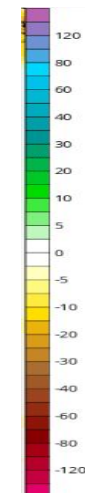
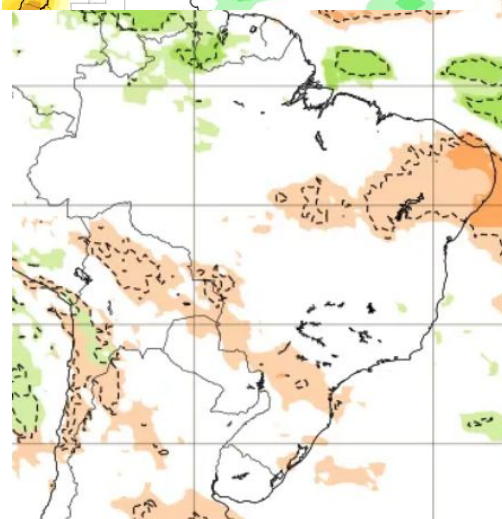


ECMWF

21 - 27 Abril



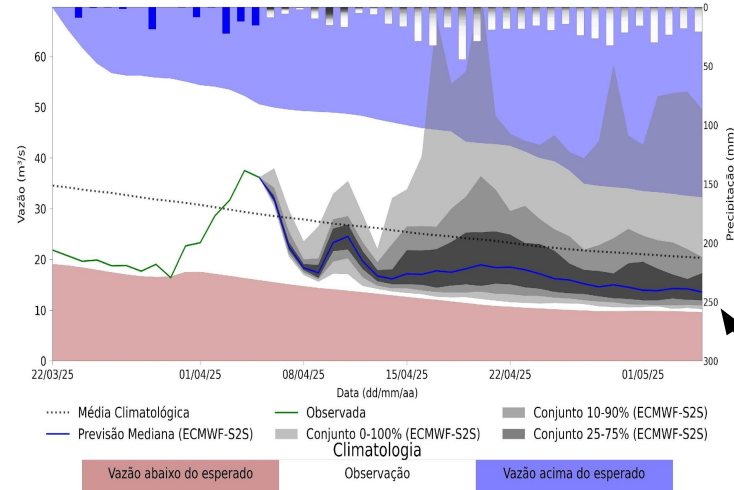
28-04 Maio



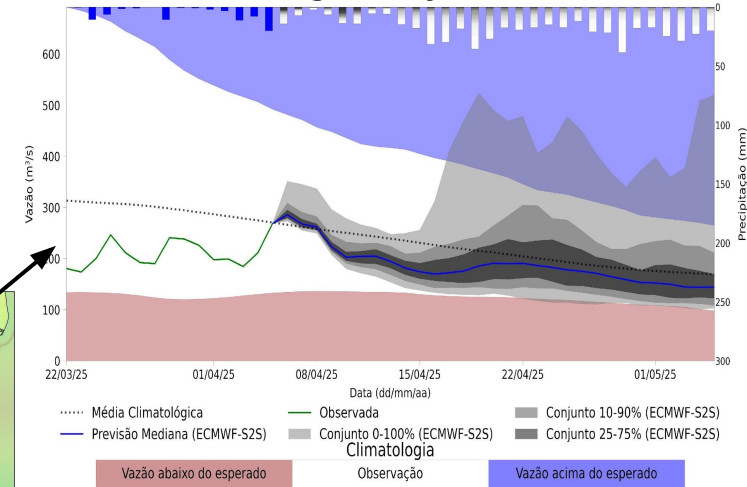
# Previsão de vazão natural na Bacia Rio Paraíba do Sul 30 dias (Modelo hidrológico MHD)

Previsão: 05/04/2025 a 05/05/2025

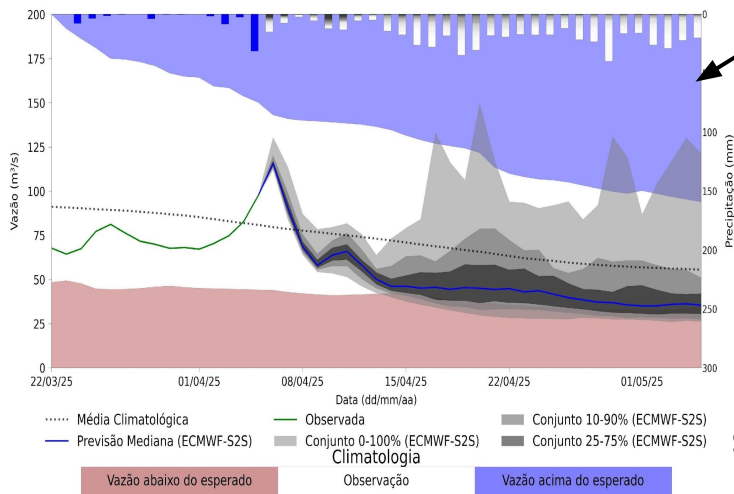
## UHE Jaguari



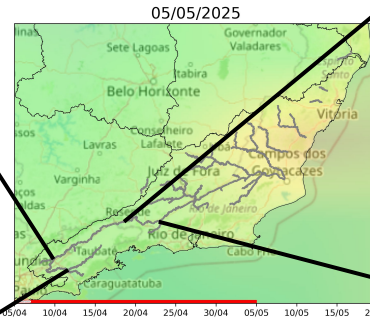
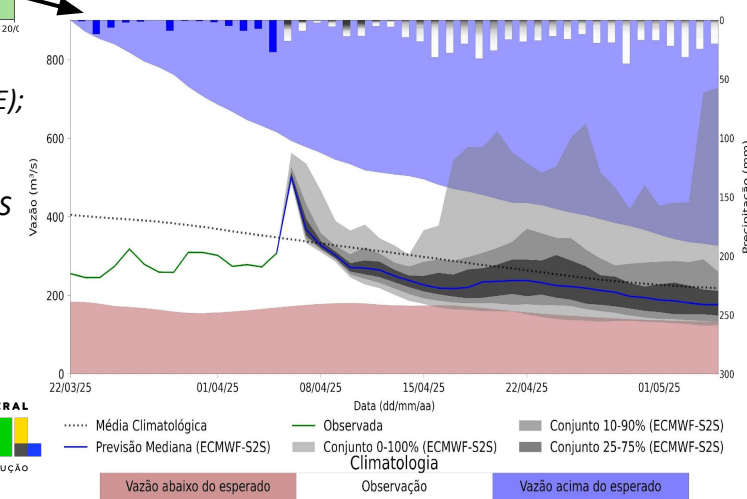
## UHE Funil



## UHE Paraibuna



## UHE Santa Cecília



Fonte: Meteorologia (INMET/MERGE);  
Vazão (ANA/ONS)  
MLT: 1993-2023  
Previsão Meteorológica: ECMWF-S2S



MINISTÉRIO DA  
CIÊNCIA, TECNOLOGIA  
E INOVAÇÃO



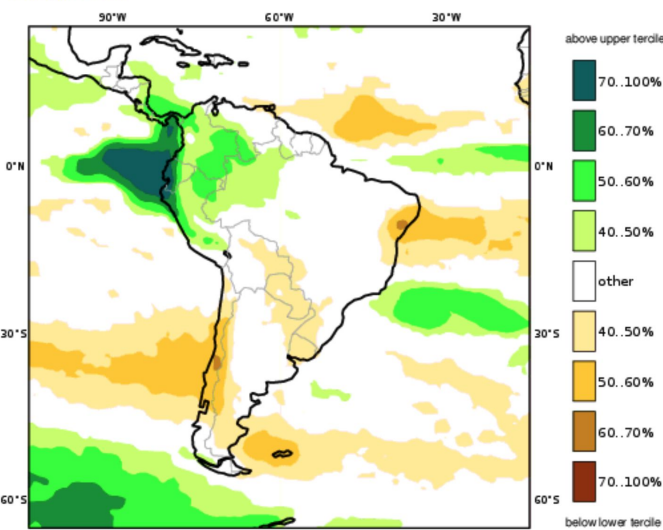


# Previsão Sazonal de Chuva Multi-Modelo

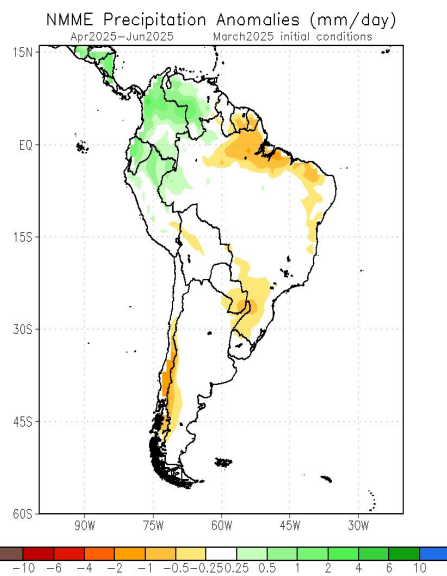
## Abril-Maio-Junho

C3S multi-system seasonal forecast  
Prob(most likely category of precipitation)  
Nominal forecast start: 01/03/25  
Unweighted mean

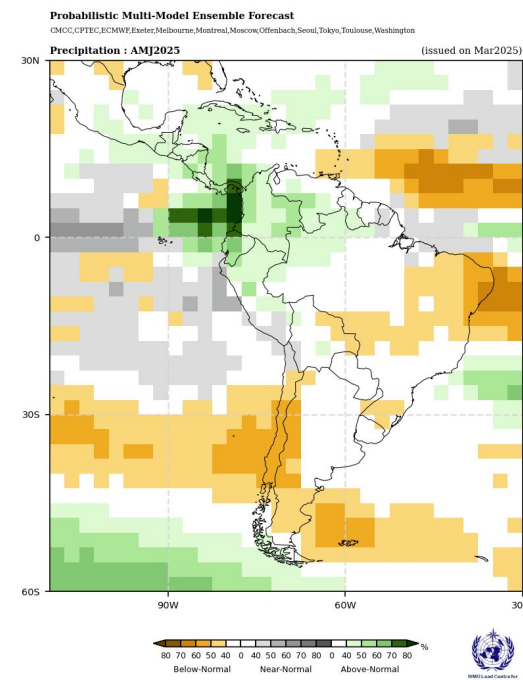
AMJ 2025



Modelos Europeus



Modelos Norte Americanos



Modelos da WMO