



CEMADEN

**Centro Nacional de Monitoramento e
Alertas de Desastres Naturais**

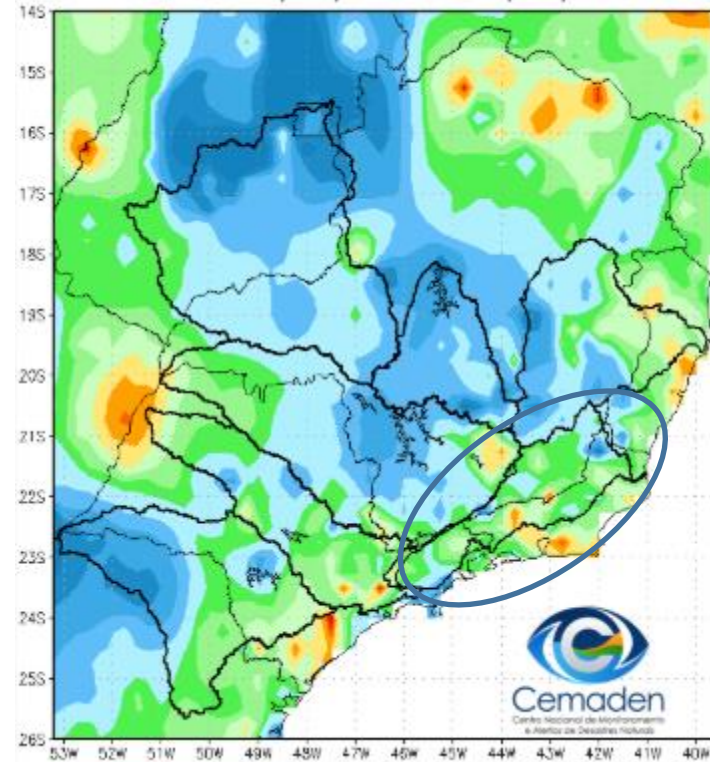
Monitoramento e Previsões para a Bacia do Rio Paraíba do Sul

05 de janeiro de 2026

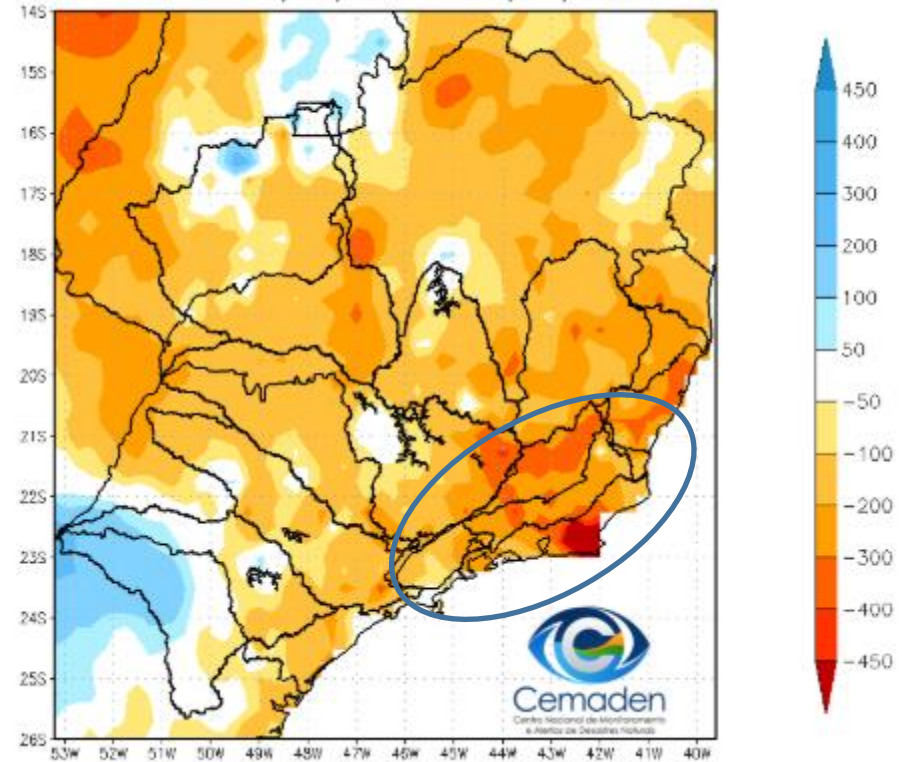


Precipitação acumulada nos últimos 30 dias

Precipitação Acumulada (mm) A.S.
Período: 05/11/2025 a 04/01/2026

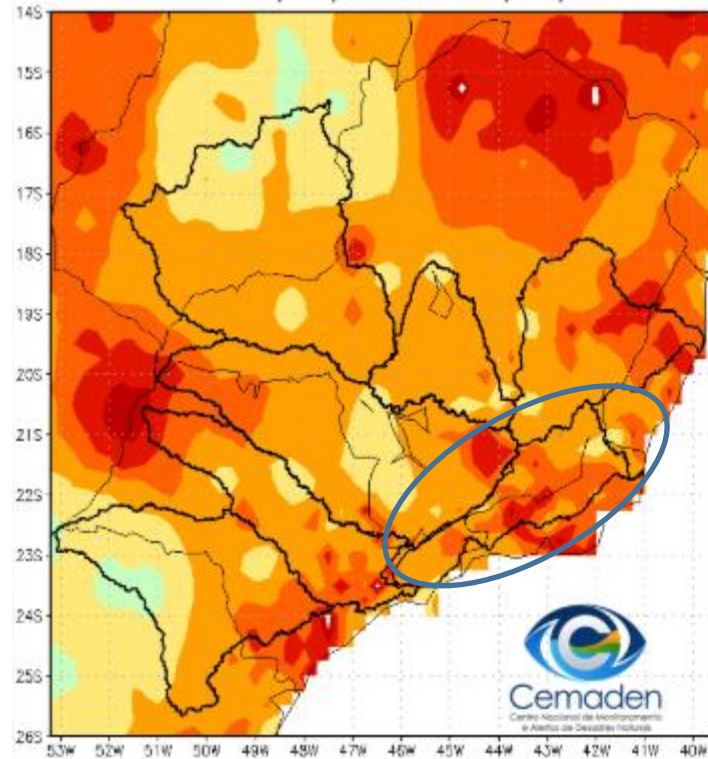


Anomalia de Precipitação (mm) A.S.
Período: 05/11/2025 a 04/01/2026

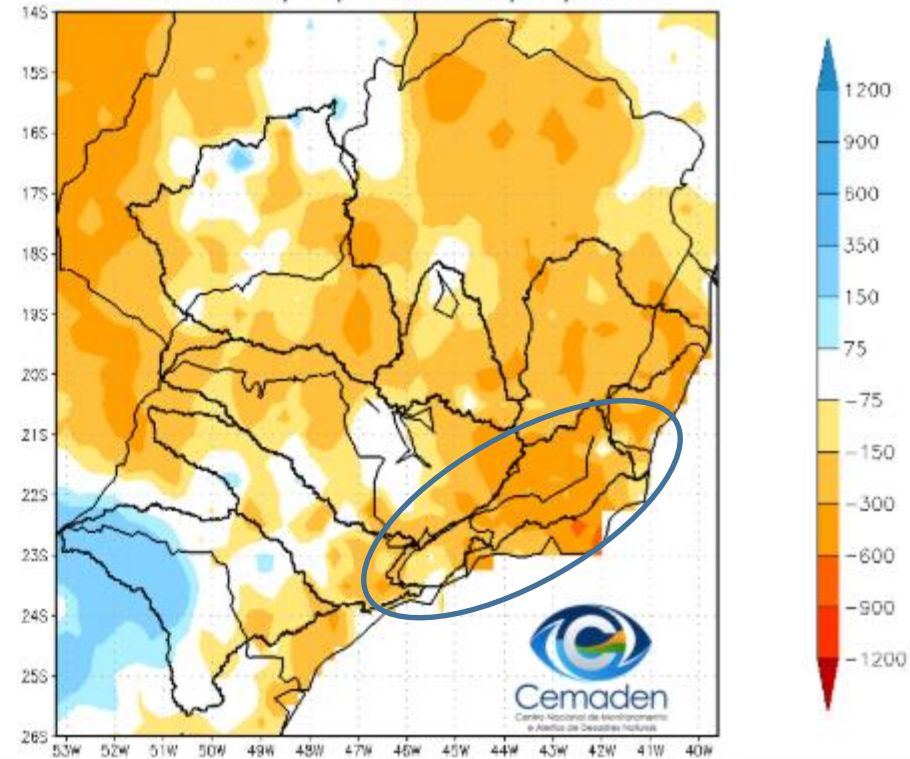


Precipitação acumulada no ano hidrológico

Precipitação Acumulada (mm) A.S.
Período: 01/10/2025 a 04/01/2026



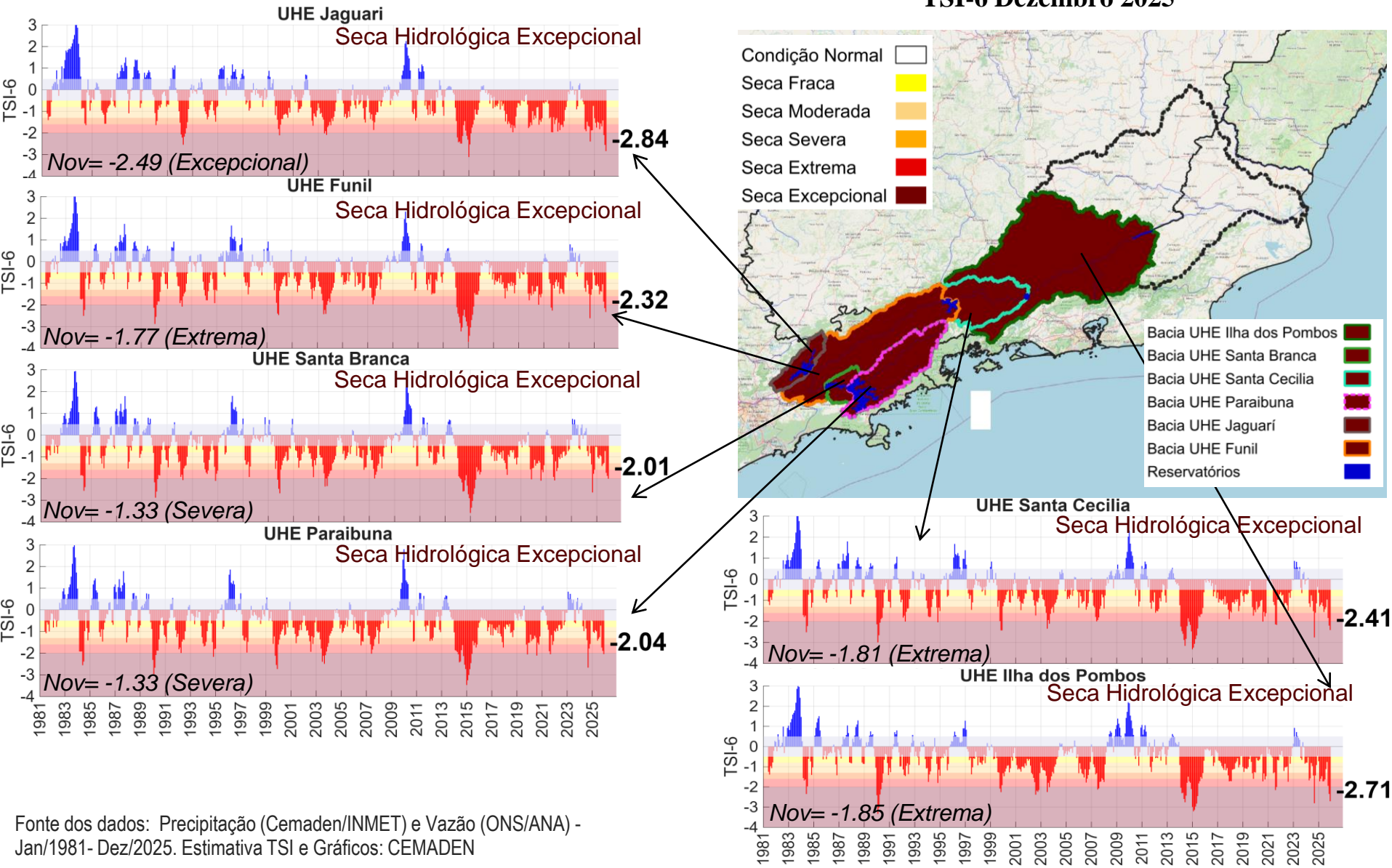
Anomalia de Precipitação (mm) A.S.
Período: 01/10/2025 a 04/01/2026



Índice de Seca Bivariado (Chuva-Vazão) - TSI

(Two-variate Standardized Index – Escala de 6 meses)

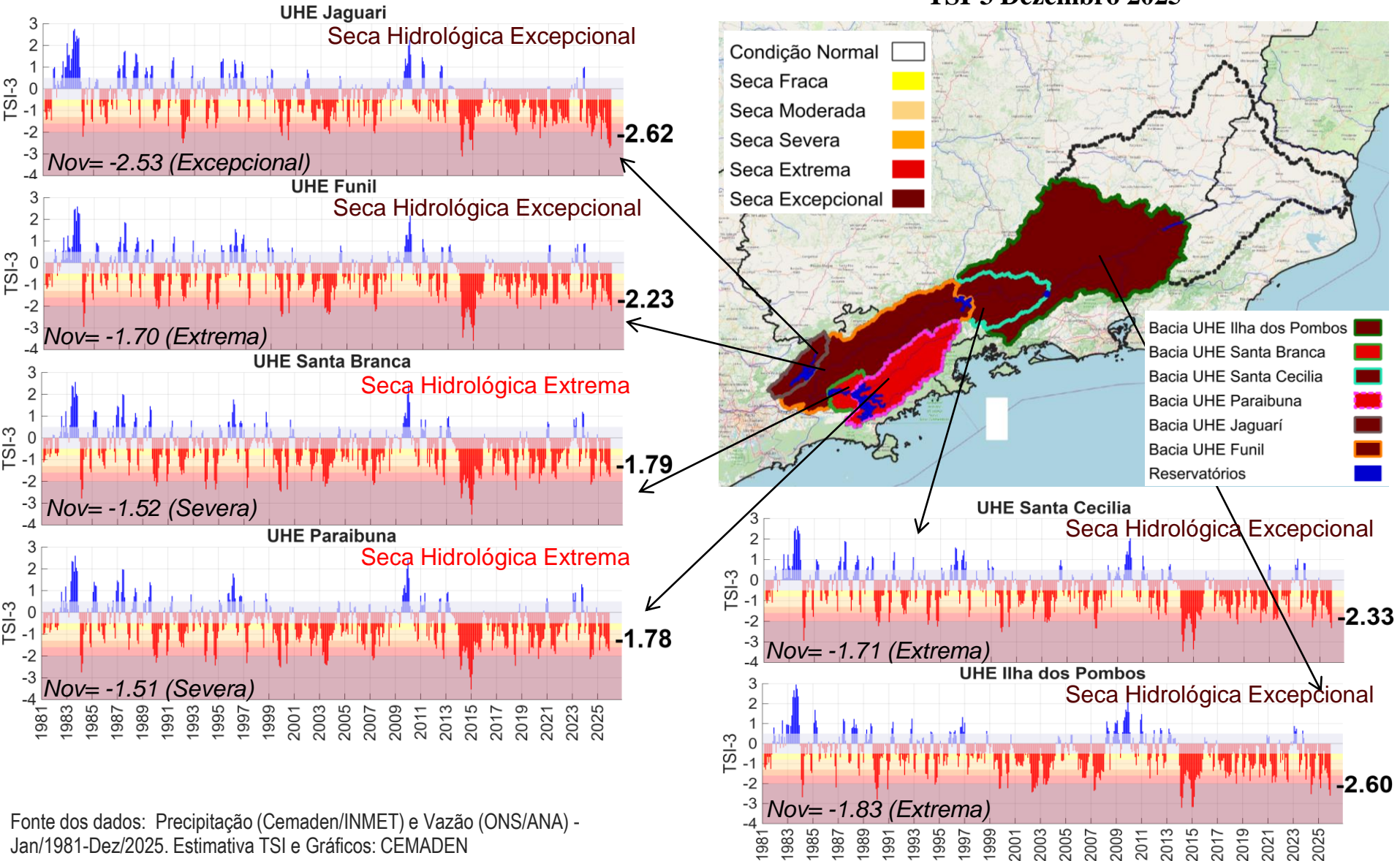
TSI-6 Dezembro 2025



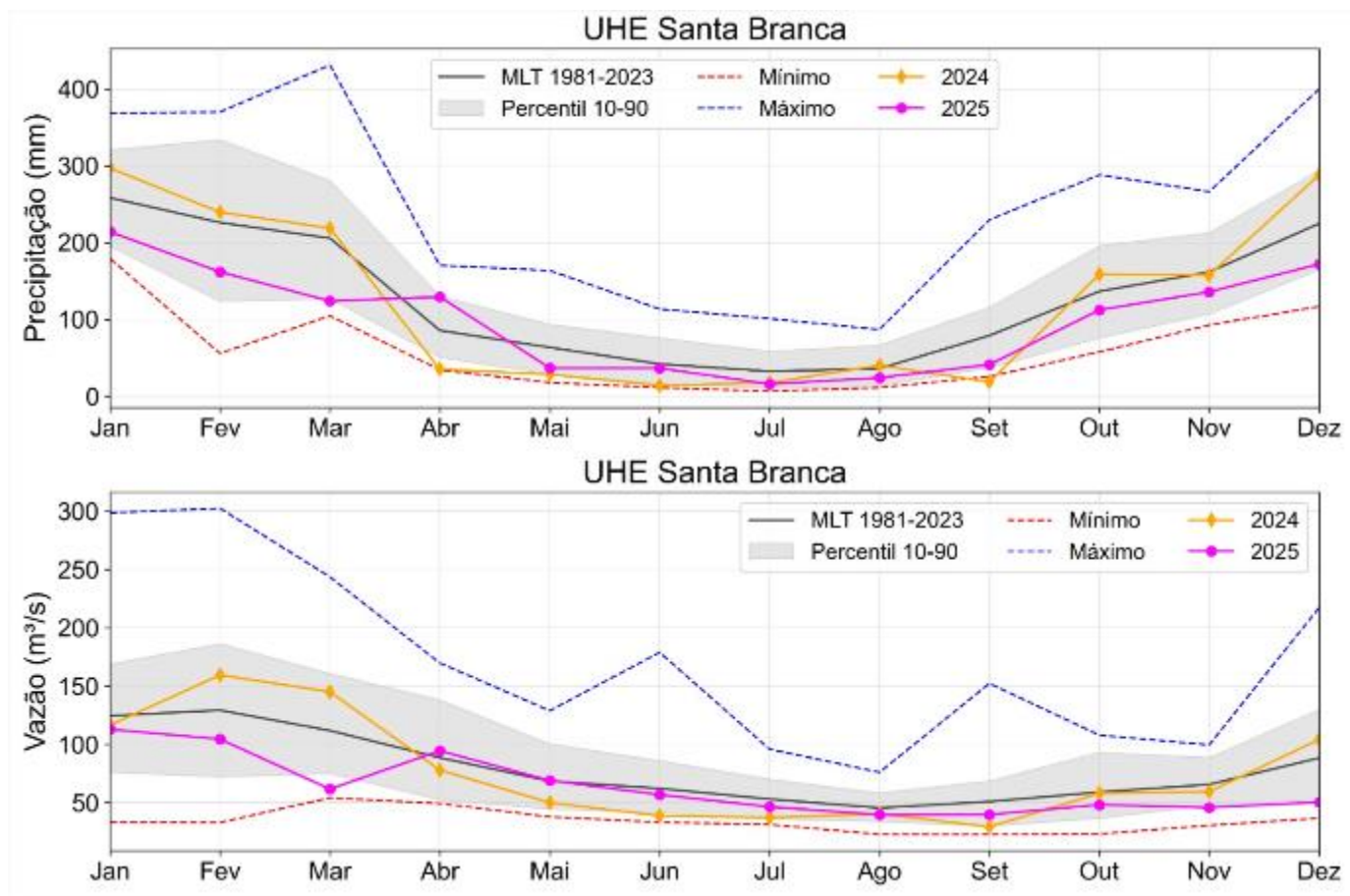
Índice de Seca Bivariado (Chuva-Vazão) - TSI

(Two-variate Standardized Index – Escala de 3 meses)

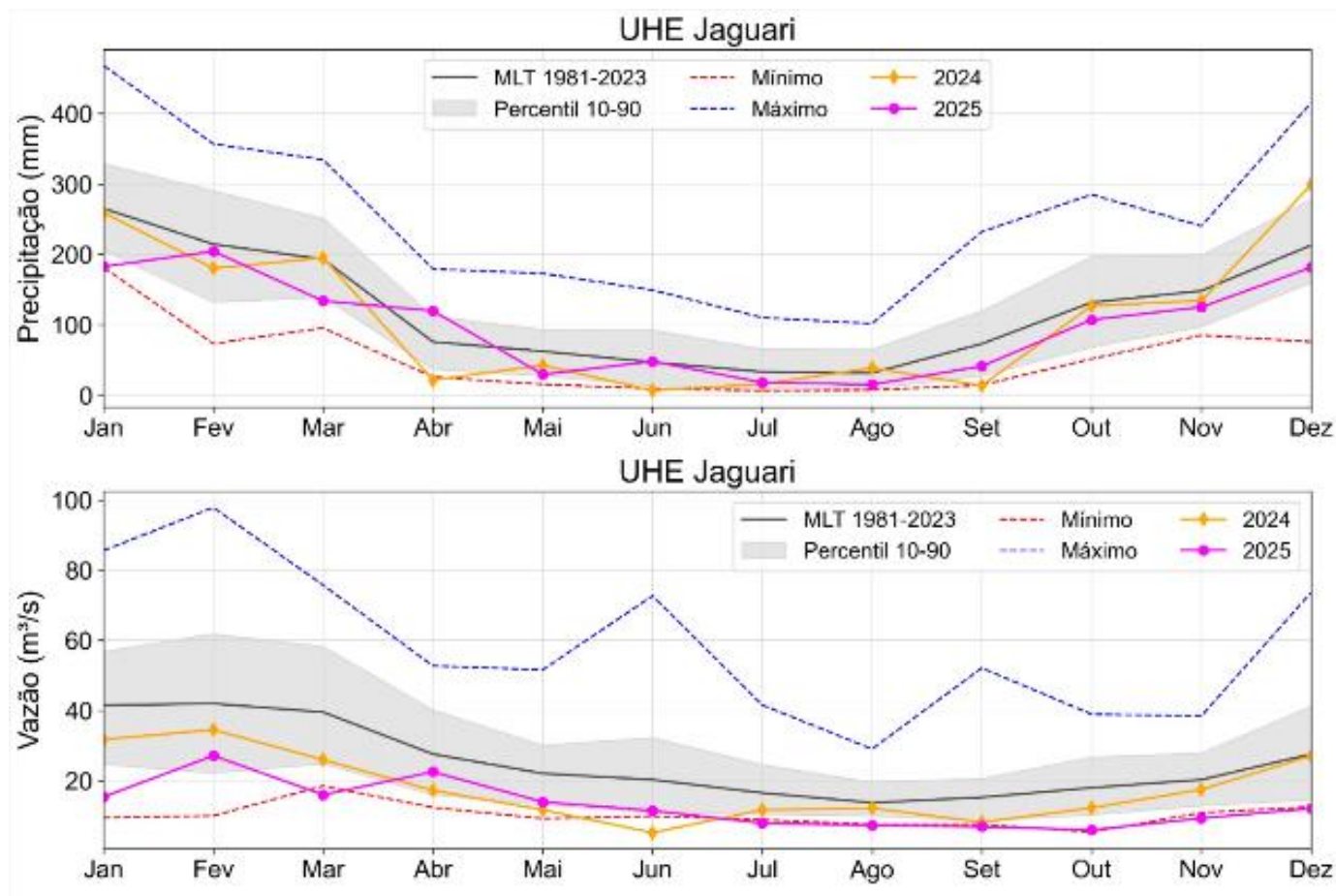
TSI-3 Dezembro 2025



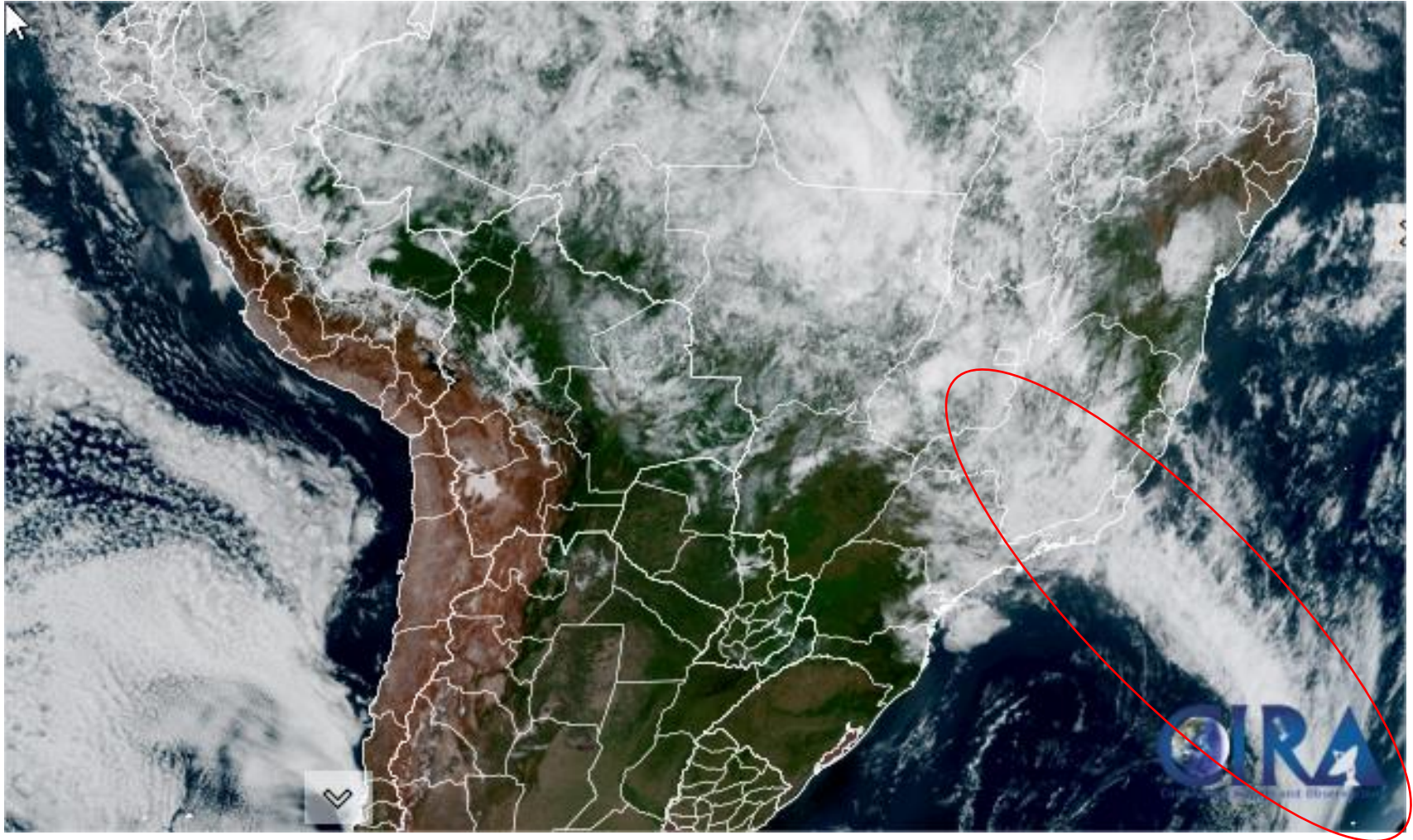
Evolução da Precipitação e Vazão nos últimos 12 meses



Evolução da Precipitação e Vazão nos últimos 12 meses

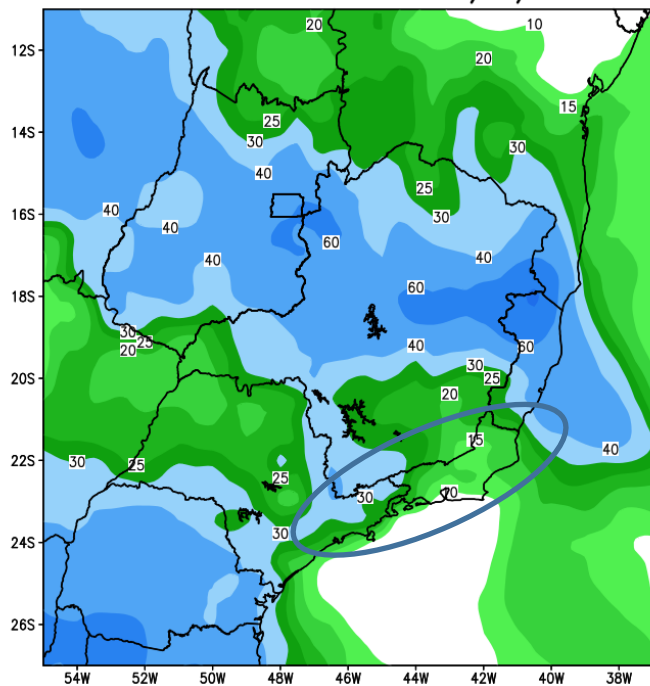


Situação meteorológica atual

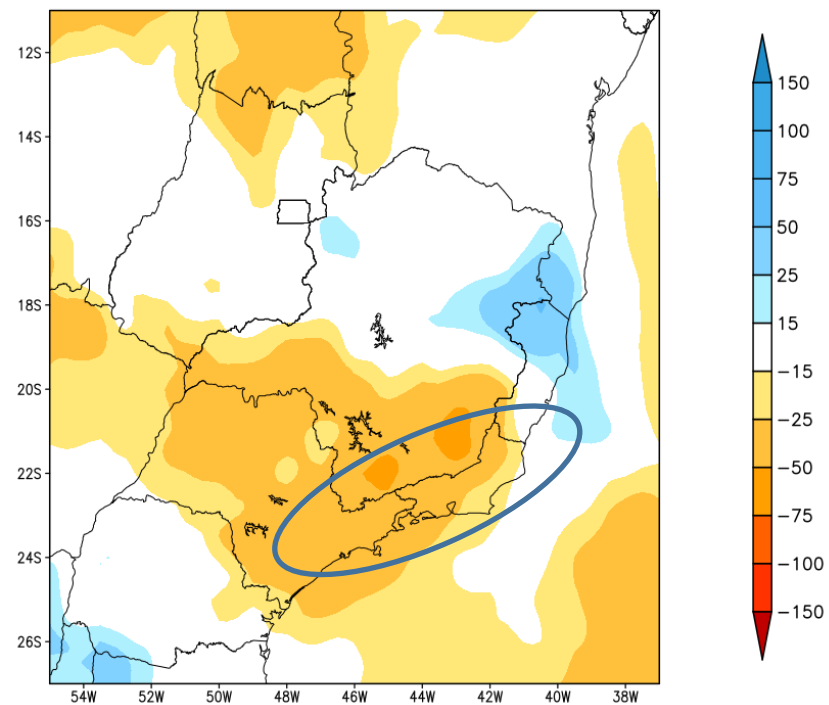


Previsão Primeira Semana

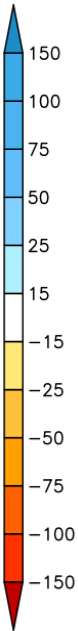
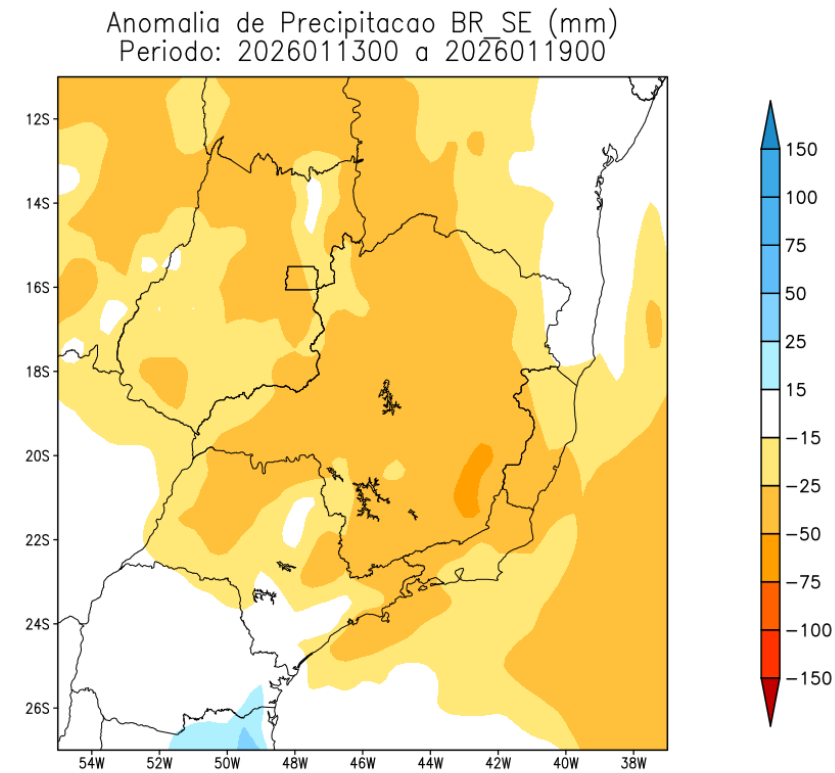
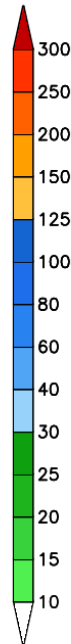
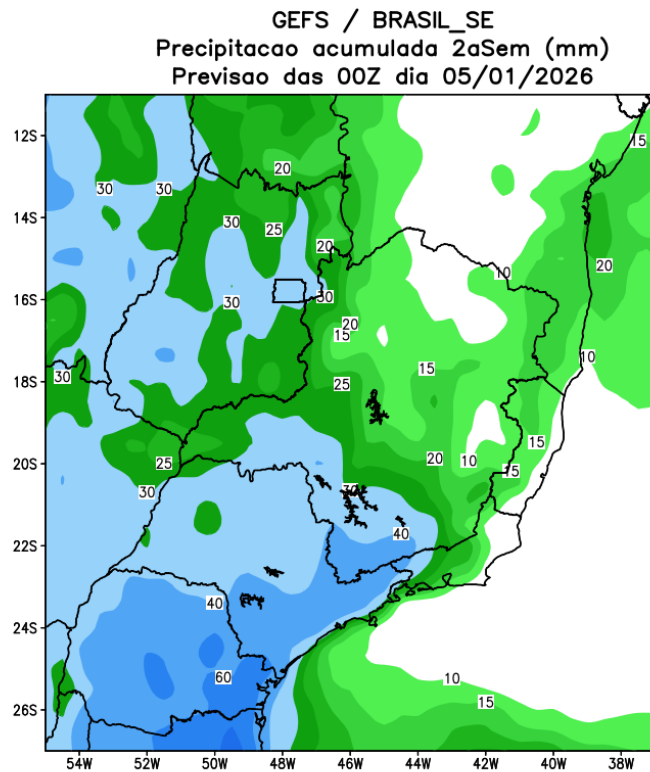
GEFS / BRASIL_SE
Precipitacao acumulada 1aSem (mm)
Previsao das 00Z dia 05/01/2026



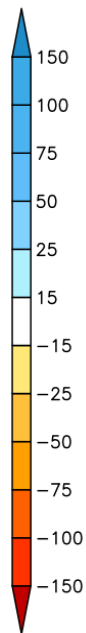
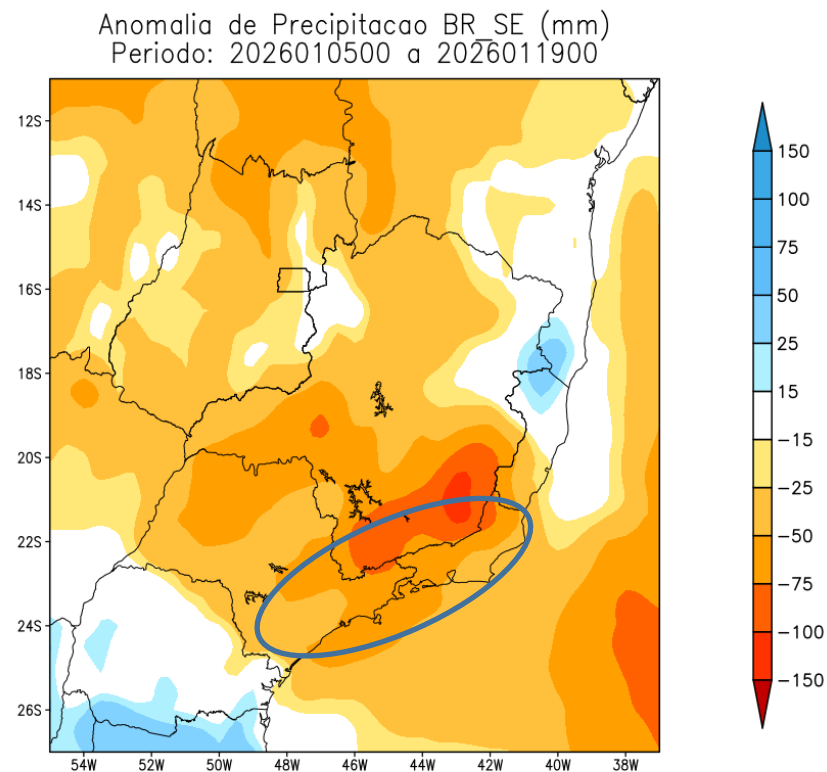
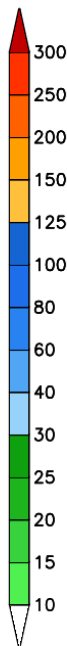
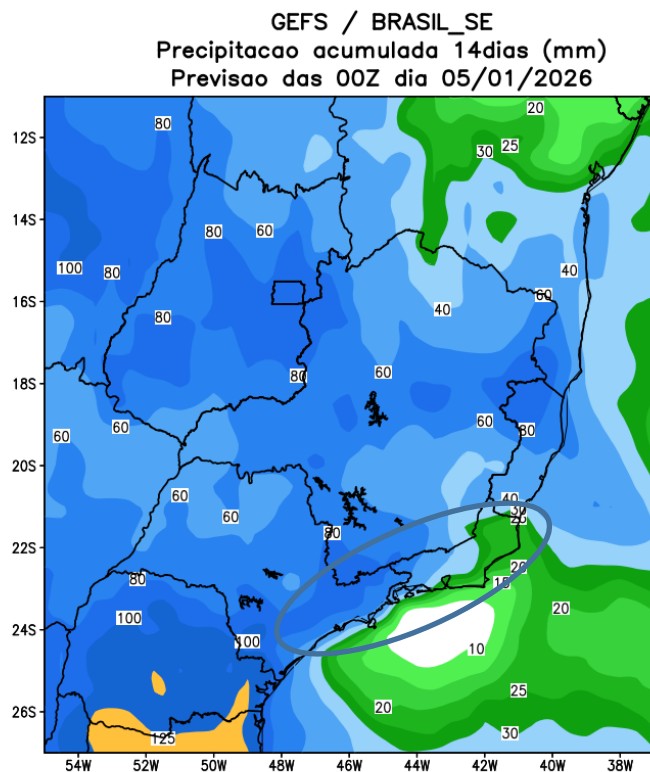
Anomalia de Precipitacao BR_SE (mm)
Periodo: 2026010500 a 2026011200



Previsão Segunda Semana



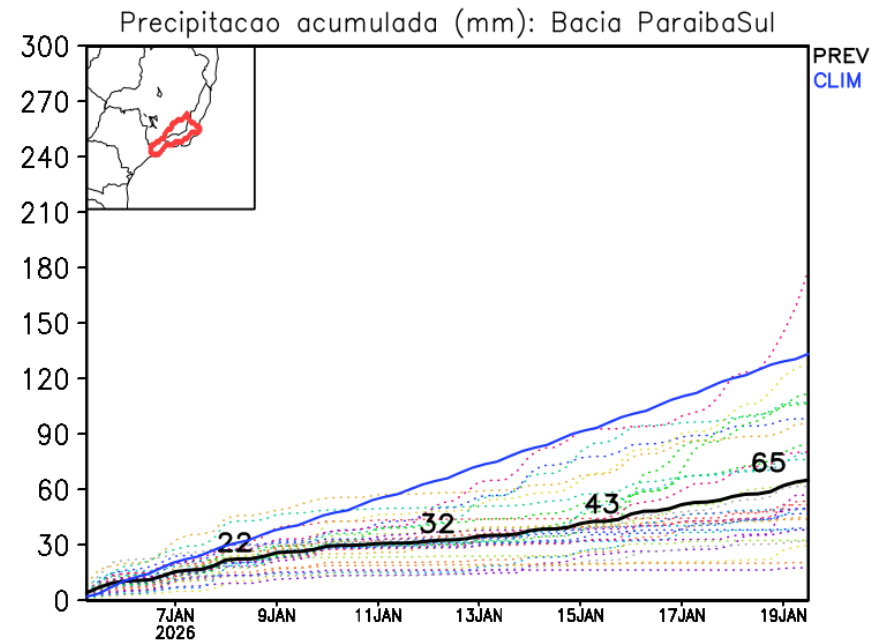
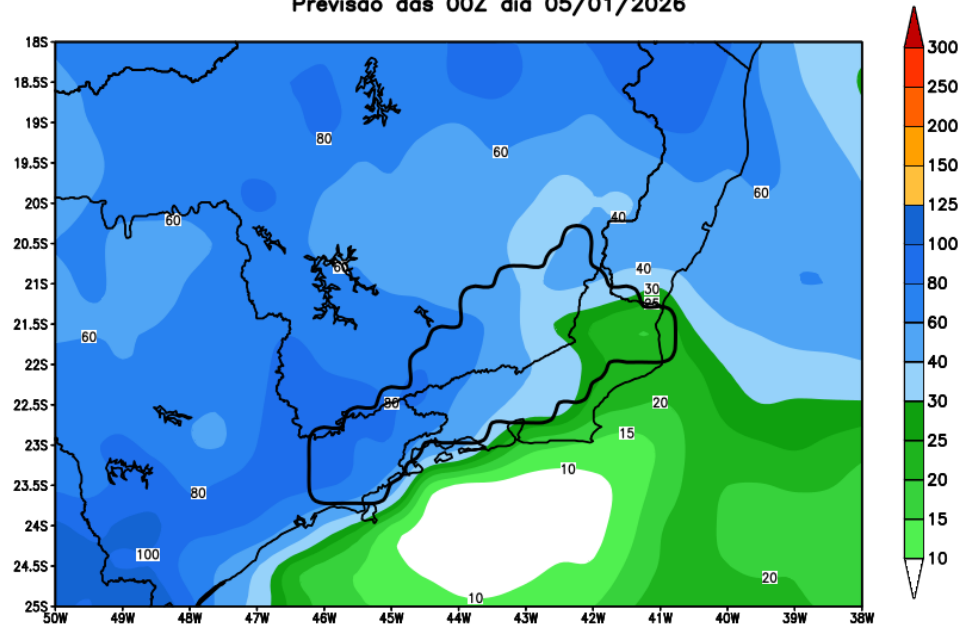
Previsão Próximas duas Semanas



Rio Paraíba do Sul

previsão de chuva em 14 dias

GEFS / Bacia do Rio Paraíba do Sul
Precipitação acumulada em 14 dias (mm)
Previsão das 00Z dia 05/01/2026



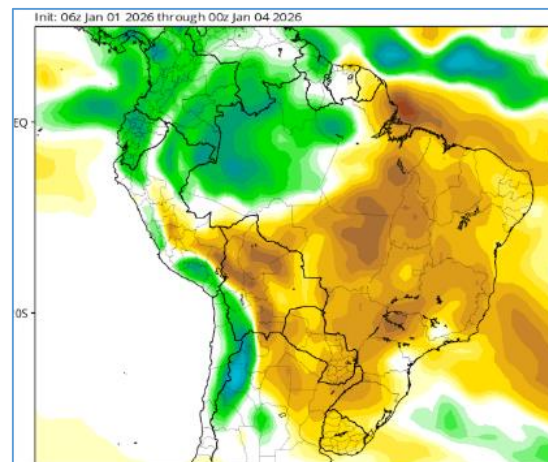
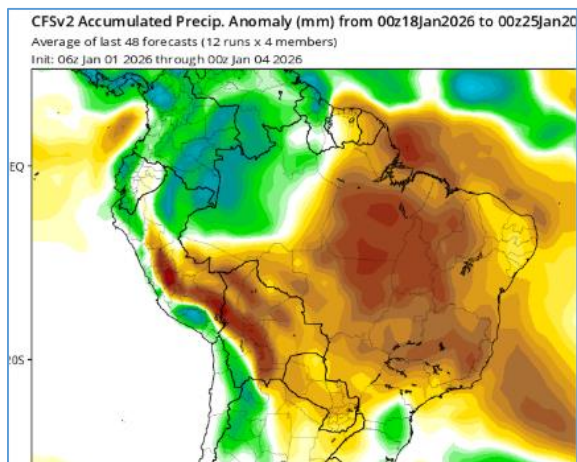
Modelo GEFS/NOAA

Tendência 3a e 4a semanas

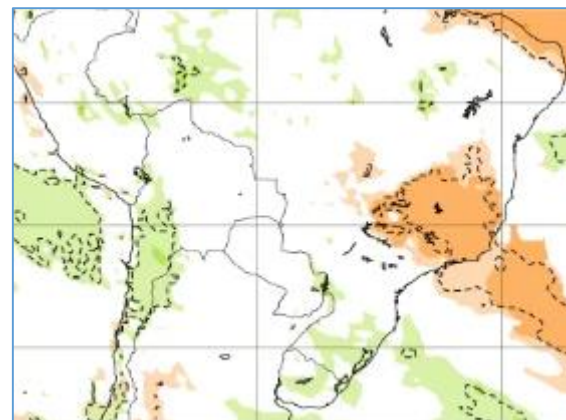
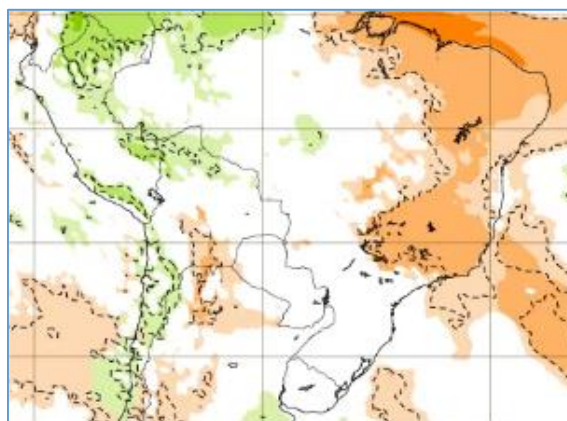
18-25 Jan

25 Jan -01 Fev

CFS/NOAA



ECMWF



19-26 Jan

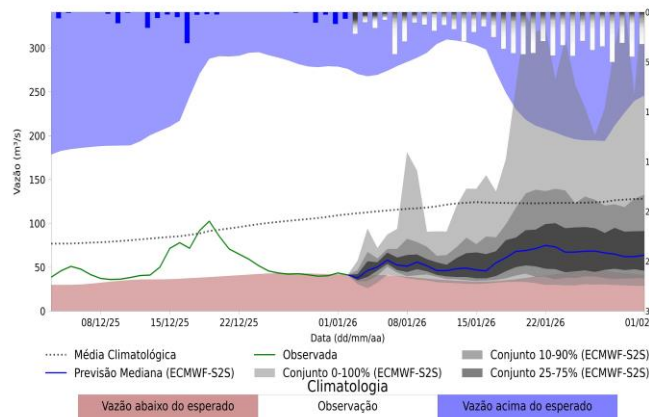
26 Jan -02 Fev



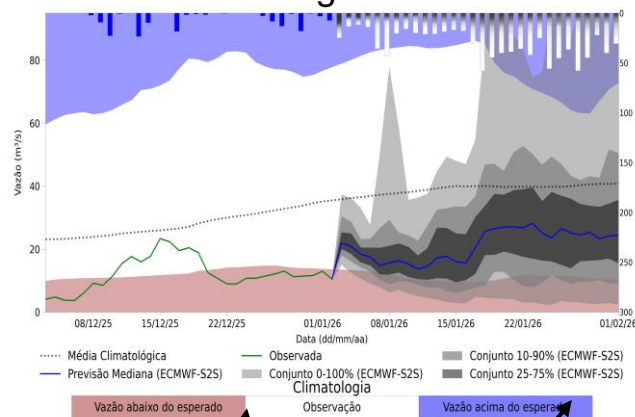
Previsão de vazão natural na Bacia Rio Paraíba do Sul

Previsão: 02/01/2026 a 01/02/2026

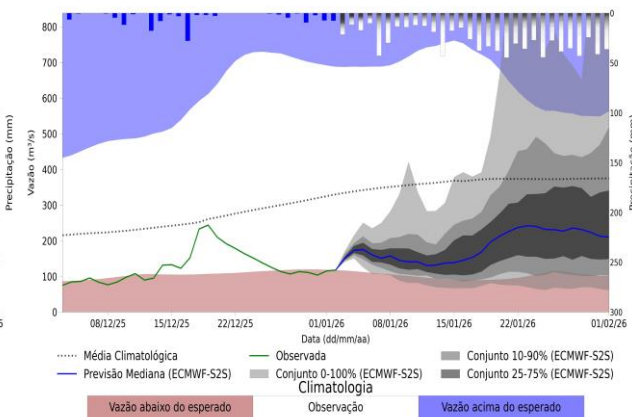
UHE Santa Branca



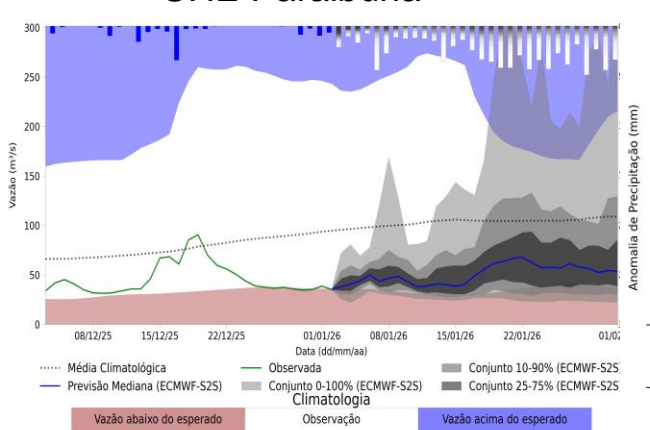
UHE Jaguari



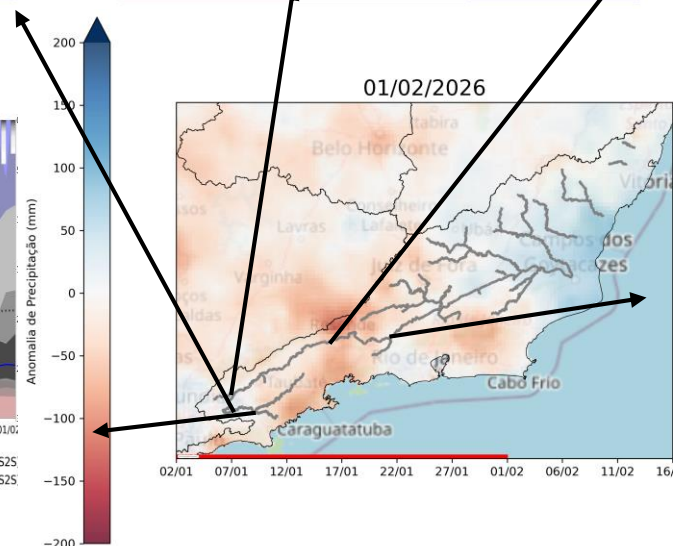
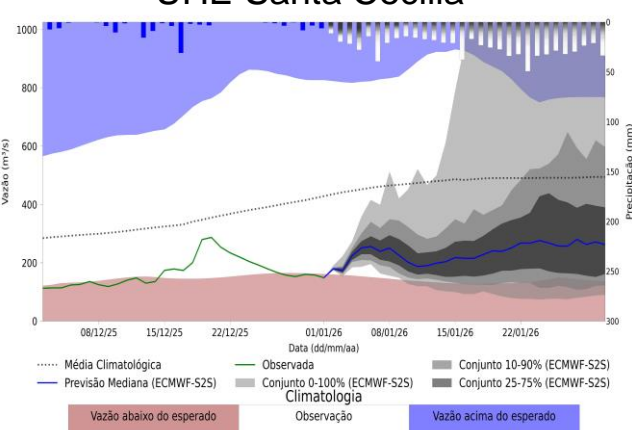
UHE Funil



UHE Paraibuna



UHE Santa Cecília



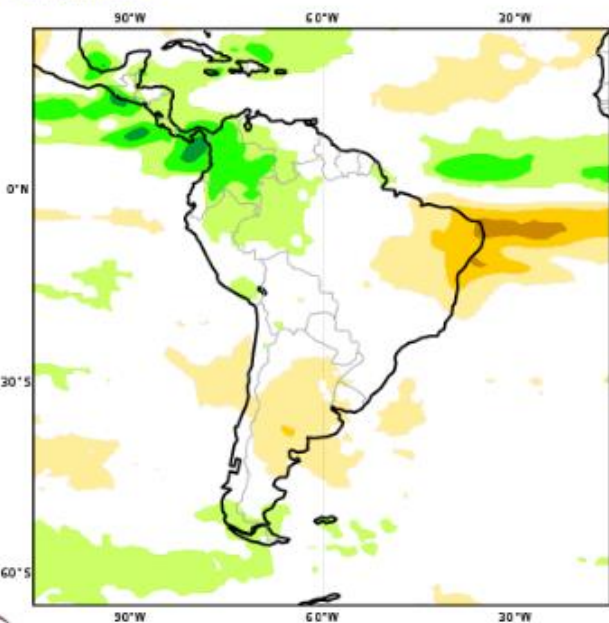
Fonte: Meteorologia (INMET/MERGE); Vazão (ANA/ONS); **MLT:** 1993-2024; **Previsão Meteorológica:** ECMWF-S2S

Previsão Sazonal de Chuva Multi-Modelo

Janeiro-Fevereiro-Março

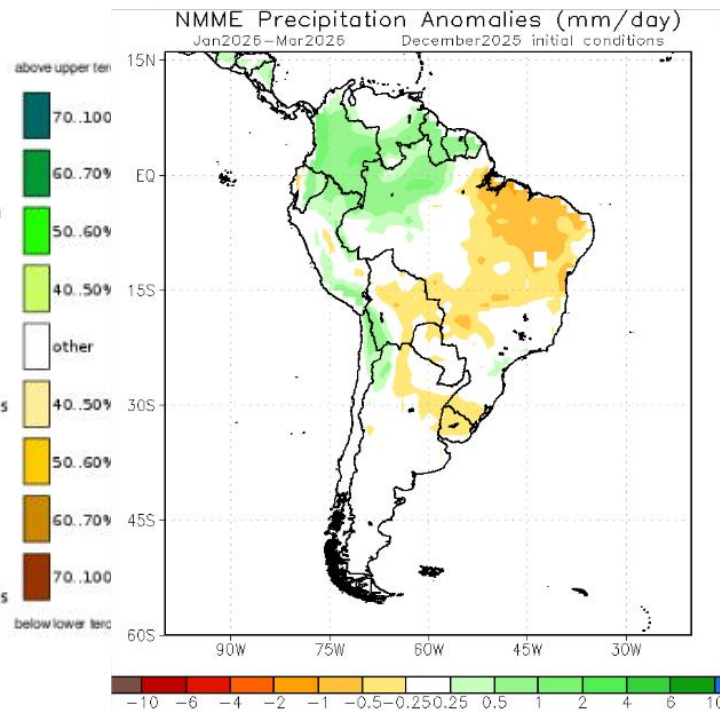
Prob(most likely category of precipitation)

Nominal forecast start: 01/12/25
Unweighted mean

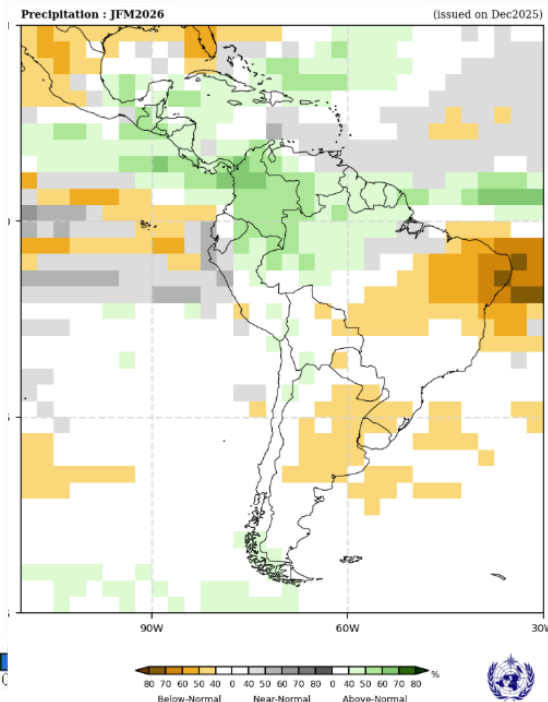


Modelos “Europeus”

JFM 2026



Modelos Norte Americanos



Modelos da WMO