

CEMADEN

Centro Nacional de Monitoramento e
Alertas de Desastres Naturais

Monitoramento e Previsões para a Bacia do rio Doce

19 de novembro de 2025

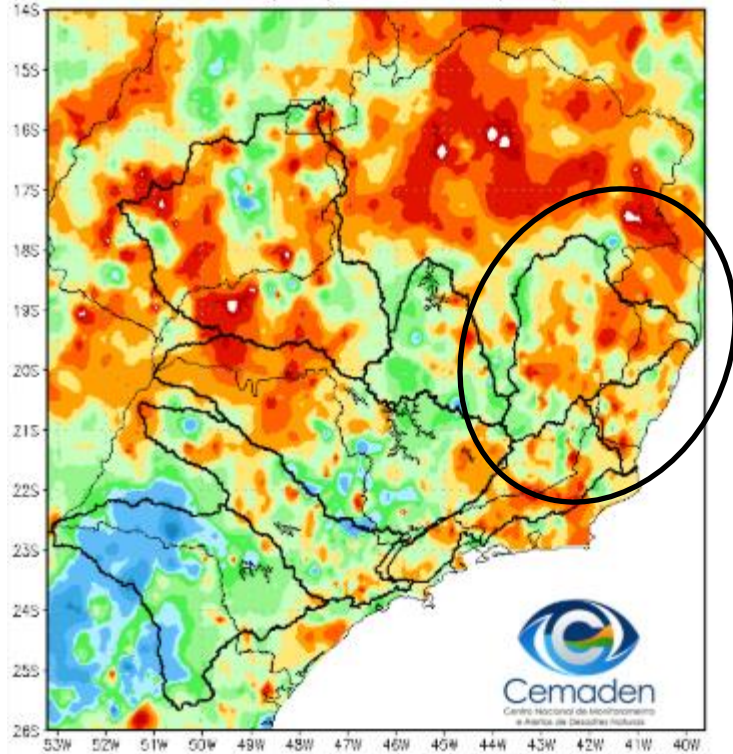


MINISTÉRIO DA
CIÊNCIA, TECNOLOGIA
E INOVAÇÃO

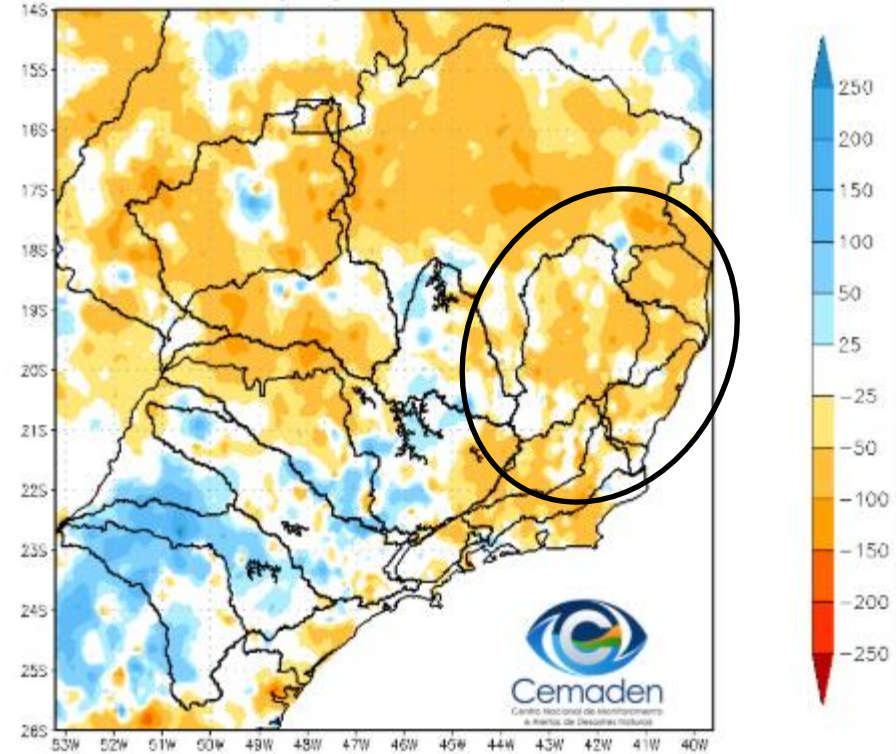


Precipitação acumulada nos últimos 30 dias

Precipitação Acumulada (mm) A.S.
Período: 19/10/2025 a 18/11/2025

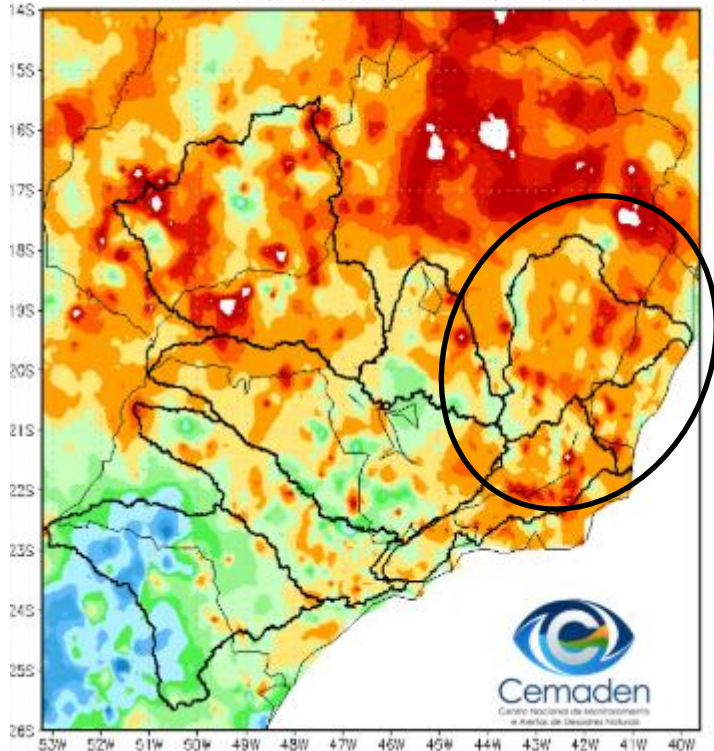


Anomalia de Precipitação (mm) A.S.
Período: 19/10/2025 a 18/11/2025

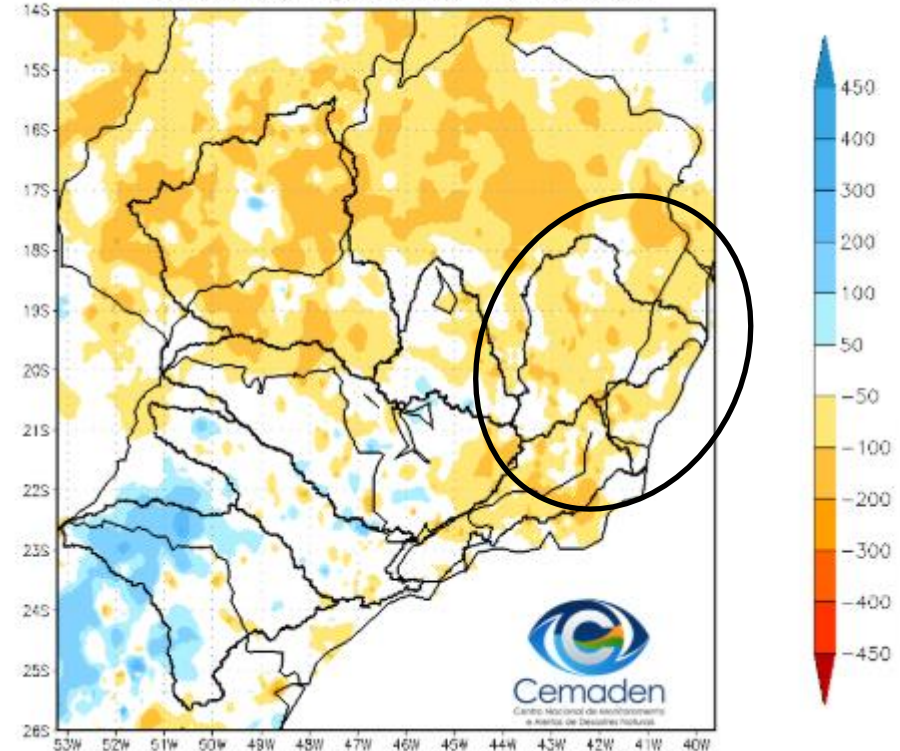


Precipitação acumulada no Ano Hidrológico

Precipitação Acumulada (mm) A.S.
Período: 01/10/2025 a 18/11/2025

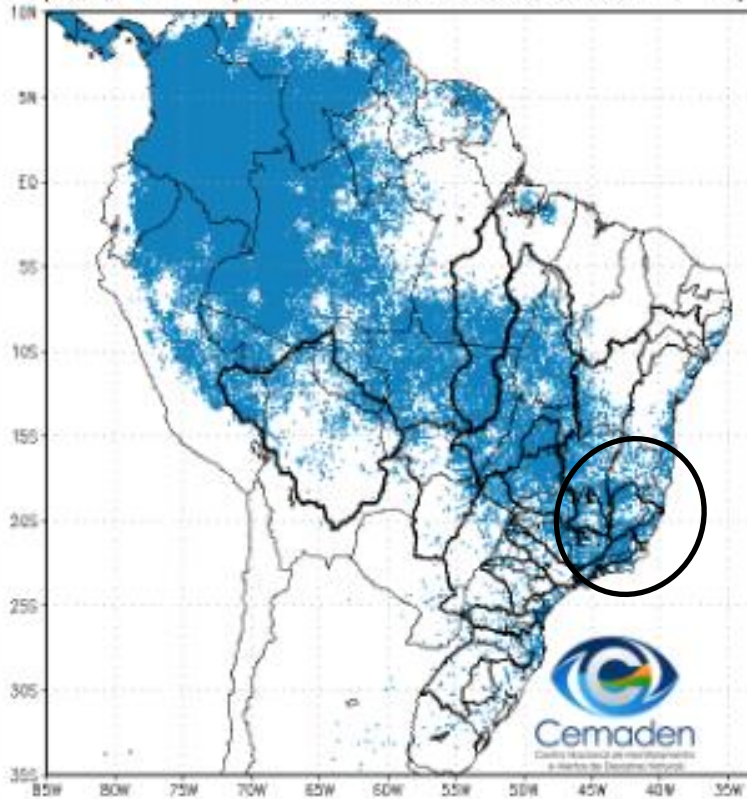


Anomalia de Precipitação (mm) A.S.
Período: 01/10/2025 a 18/11/2025

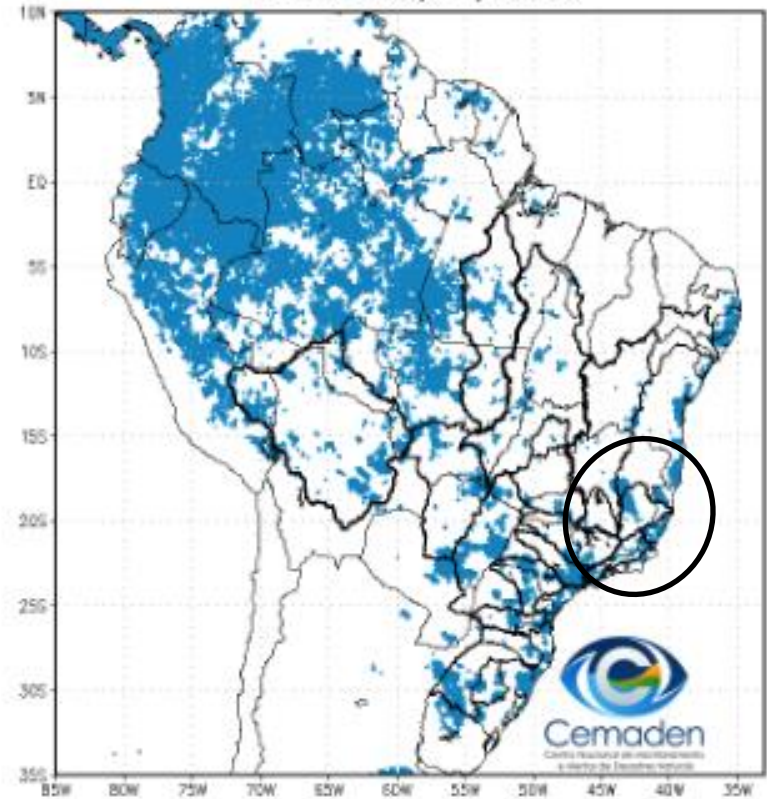


Situação da Estação Chuvosa

Climatologia da Precipitação (2001–2024)
Superior 3 mm/dia em 4 de 5 dias Período: 18/11

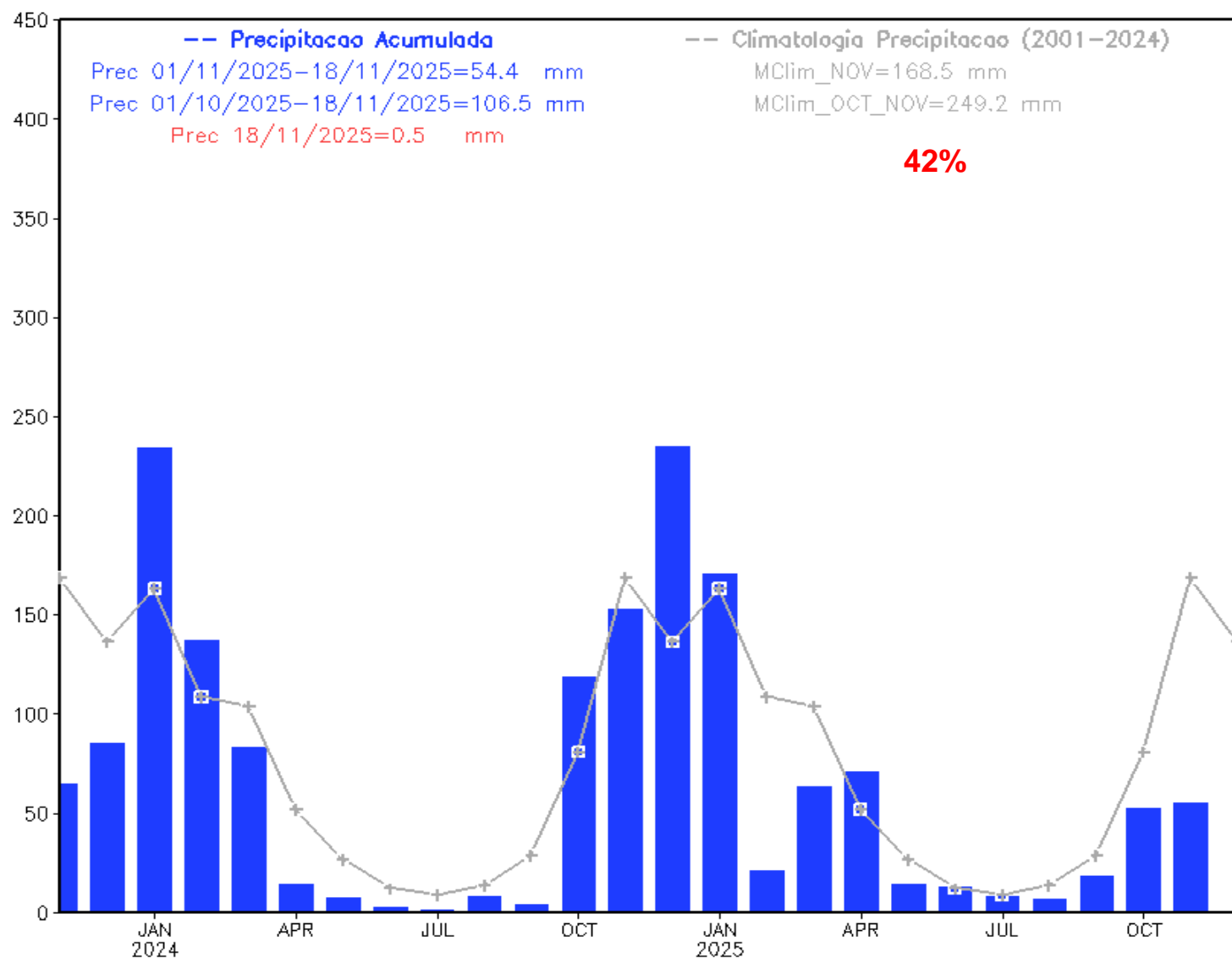


Precipitação A.S. Superior a 3 mm/dia por 4 de 5 dias
Período: 18/11/2025



Precipitação acumulada nos últimos 24 meses

Precipitacao Bacia do Rio Doce desde NOV 2023

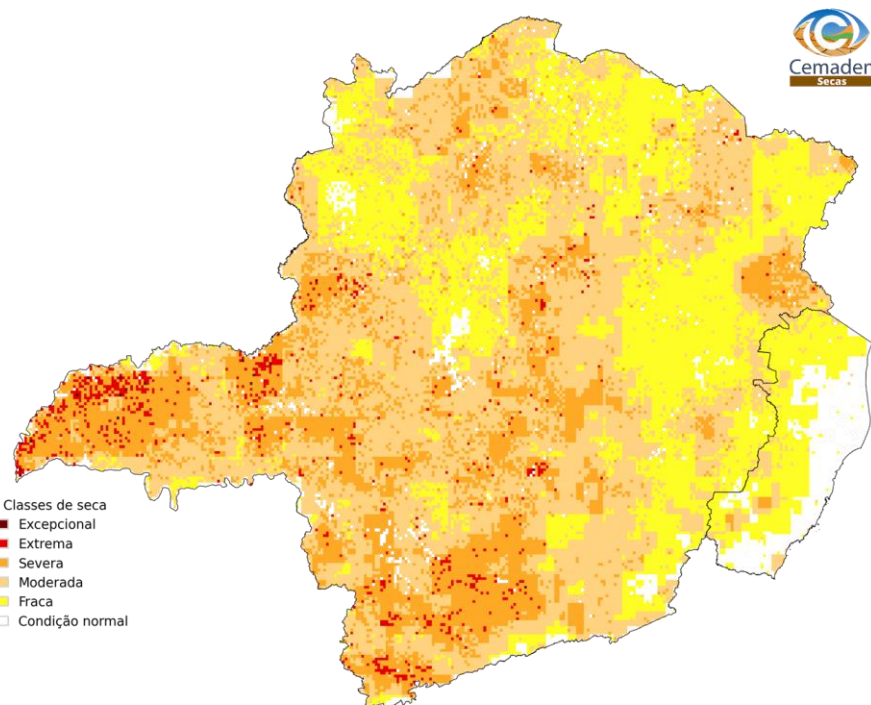


ÍNDICE INTEGRADO DE SECA - IIS

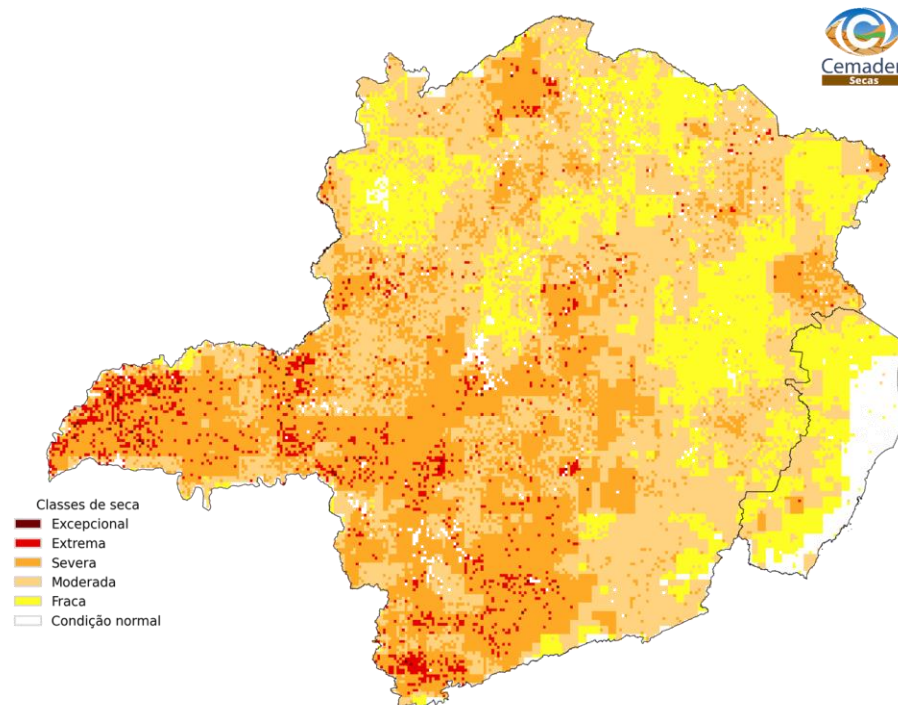
(SPI + VHI + AUS): OUTUBRO/2025

IIS-03

IIS-06



Índice Integrado de Seca - 3 meses (IIS3)
outubro 2025
Fonte: Cemaden/MCTI

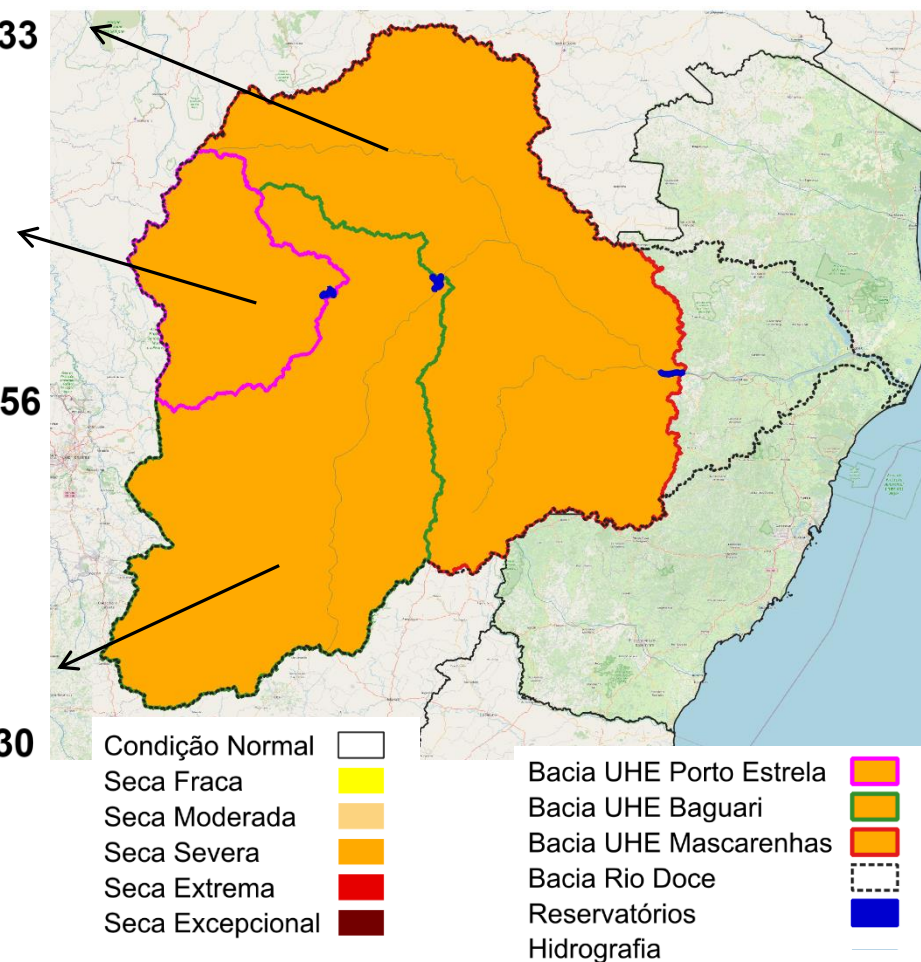
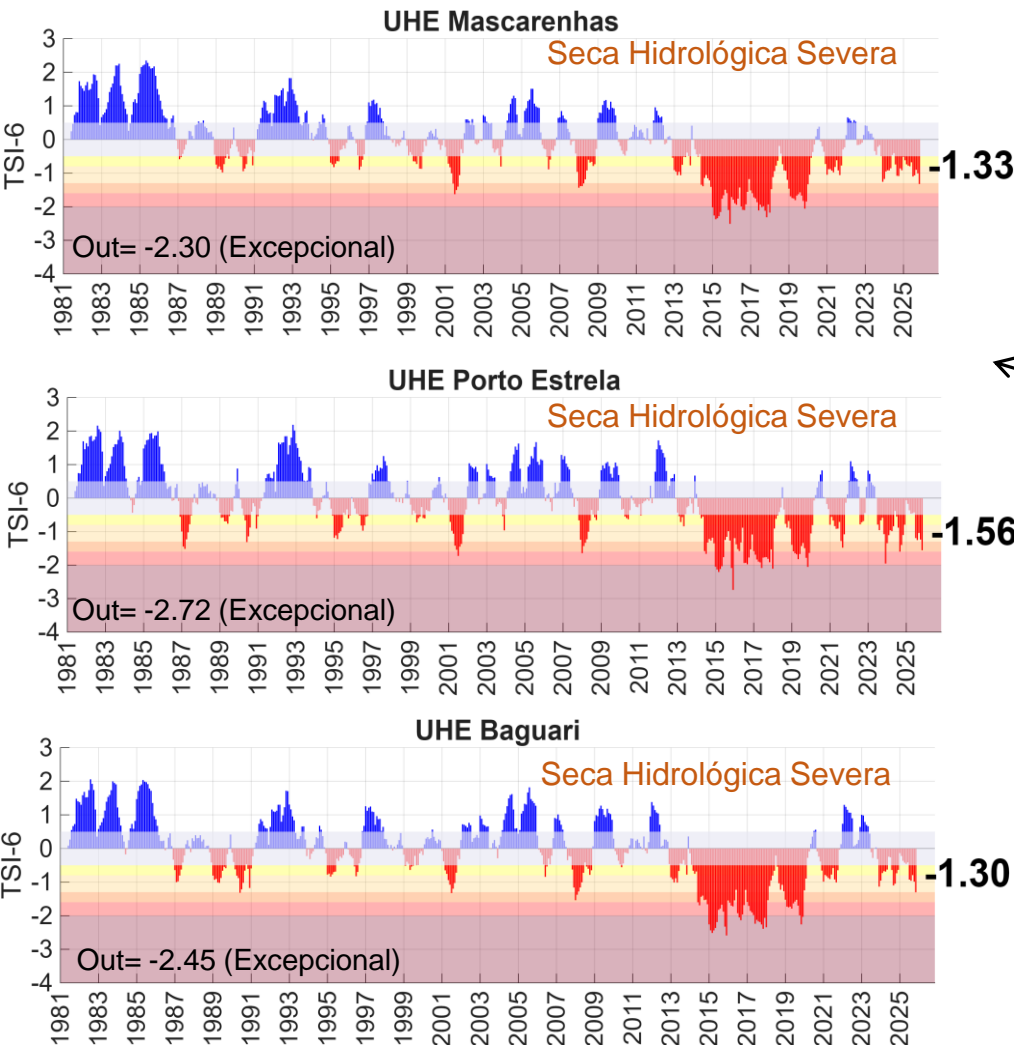


Índice Integrado de Seca - 6 meses (IIS6)
outubro 2025
Fonte: Cemaden/MCTI

Índice Bivariado de Seca (Precipitação-Vazão) - TSI

Escala de longo prazo: **TSI-6 meses**

Nov/2025 - Parcial

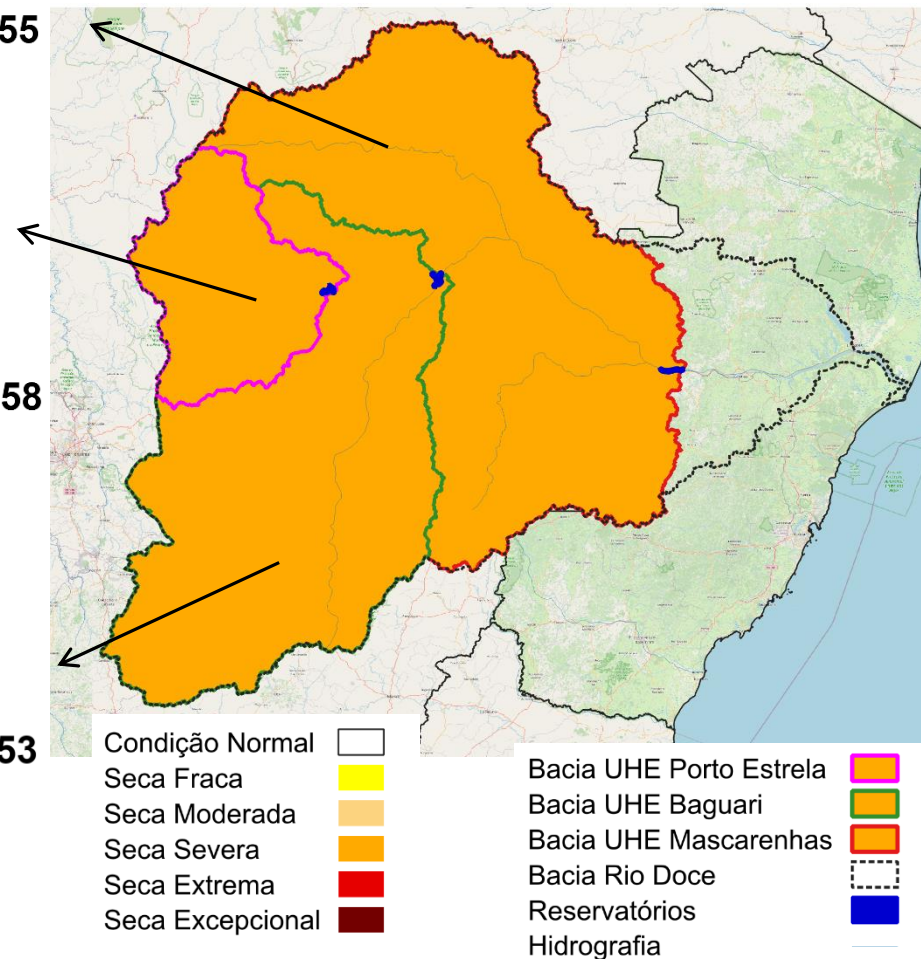
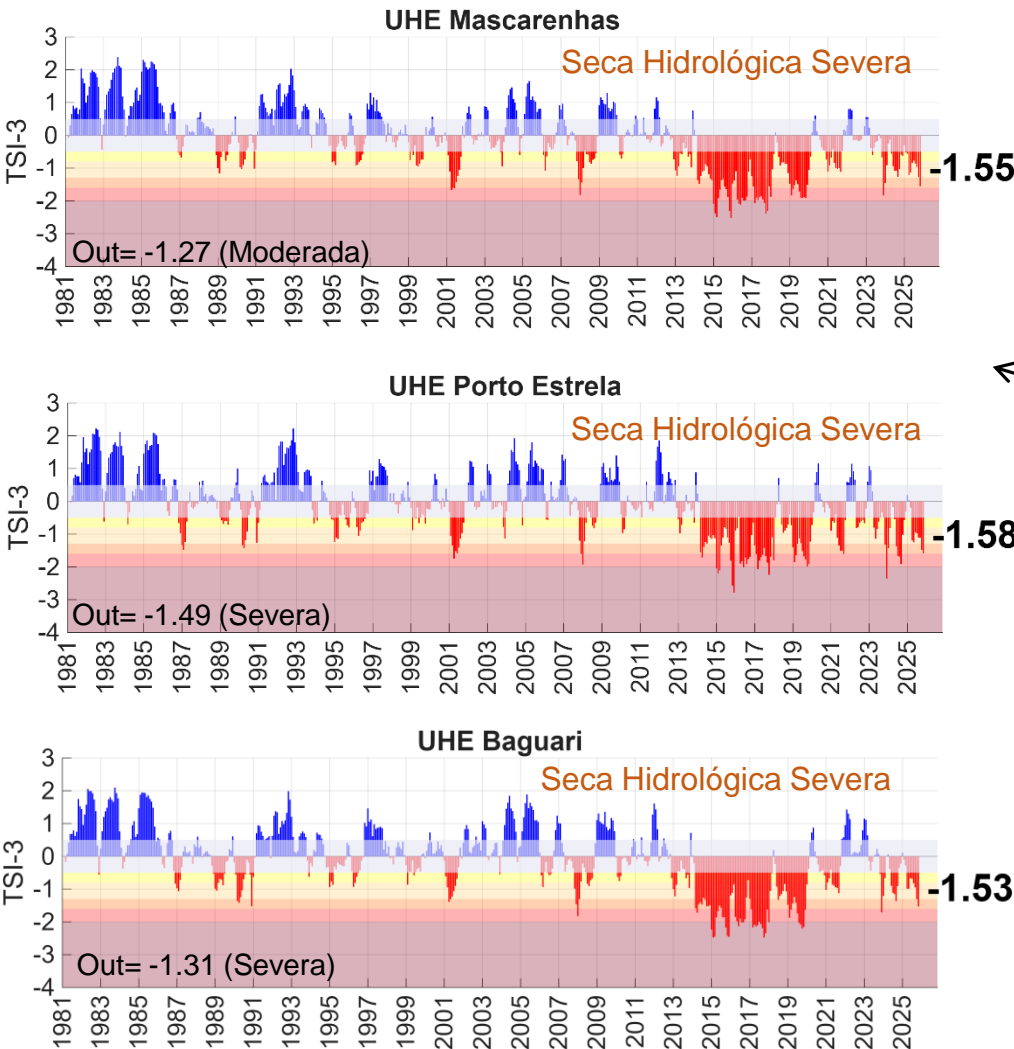


Fonte: CEMADEN
Dados: Precipitação (CHIRPS)
Vazão (ONS/ANA) - Jan/1981-Nov/2025.

Índice Bivariado de Seca (Precipitação-Vazão) - TSI

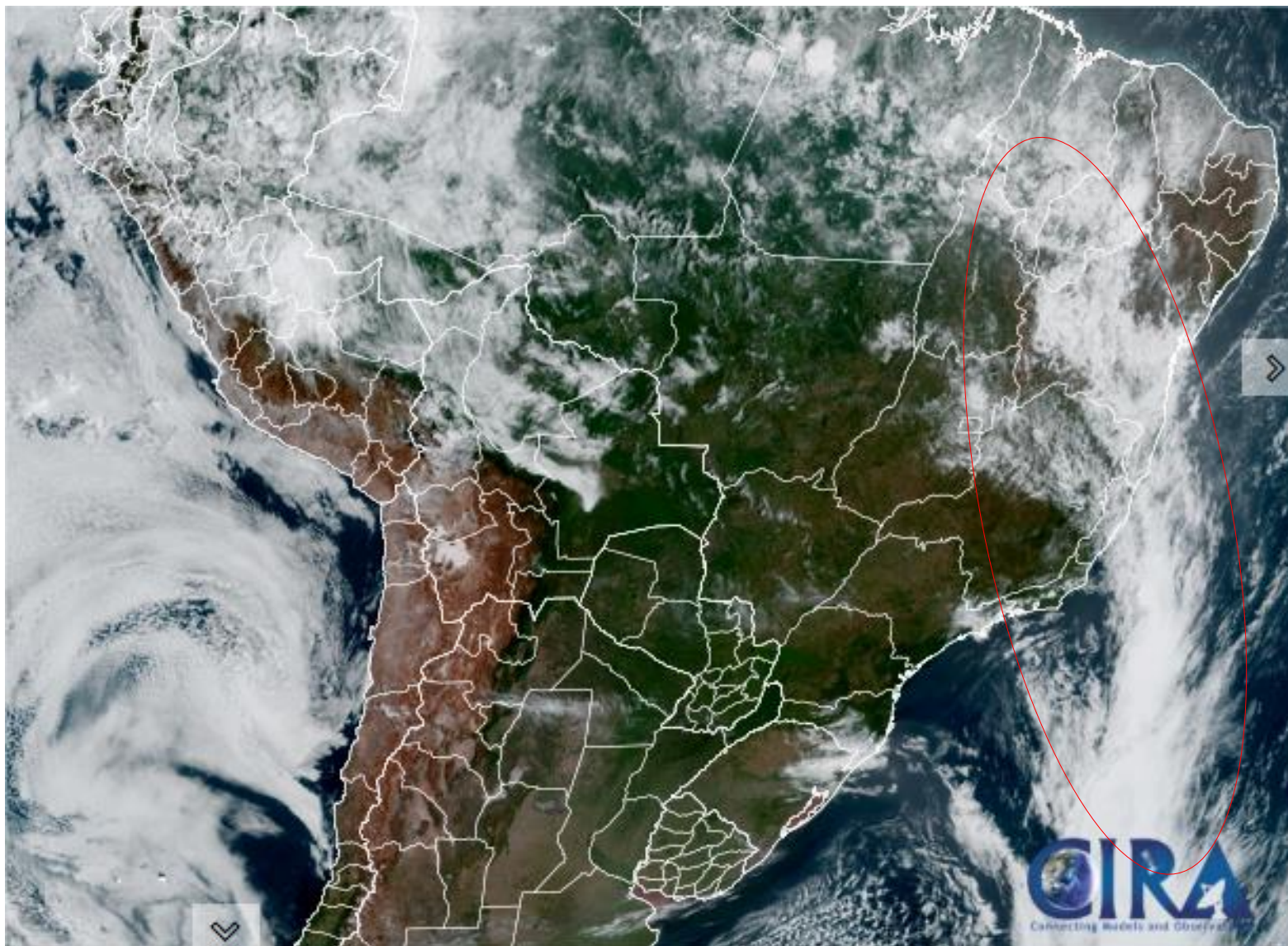
Escala de longo prazo: **TSI-3 meses**

Nov/2025 - Parcial

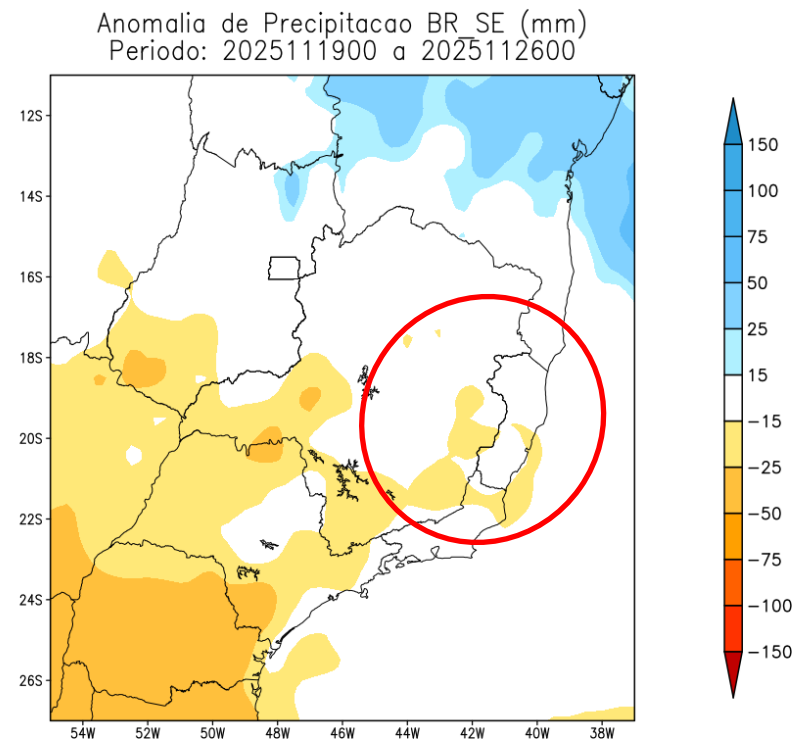
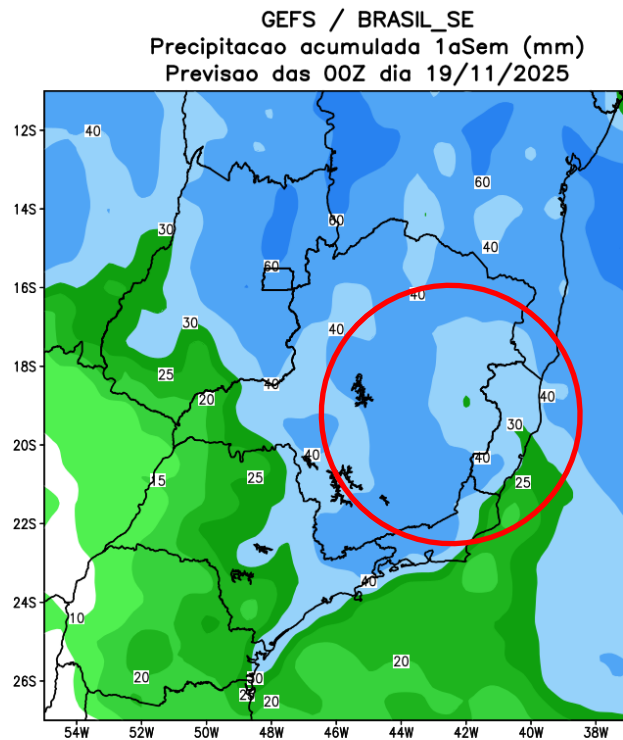


Fonte: CEMADEN
Dados: Precipitação (CHIRPS)
Vazão (ONS/ANA) - Jan/1981-Nov/2025.

Situação meteorológica atual

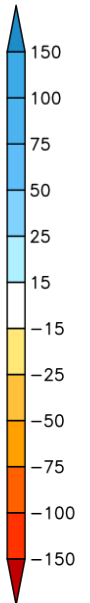
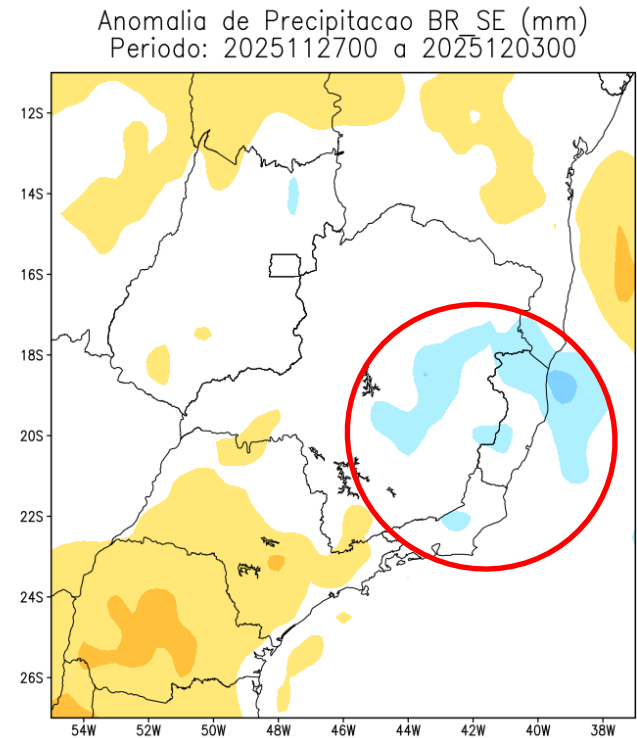
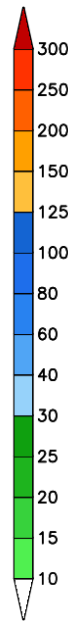
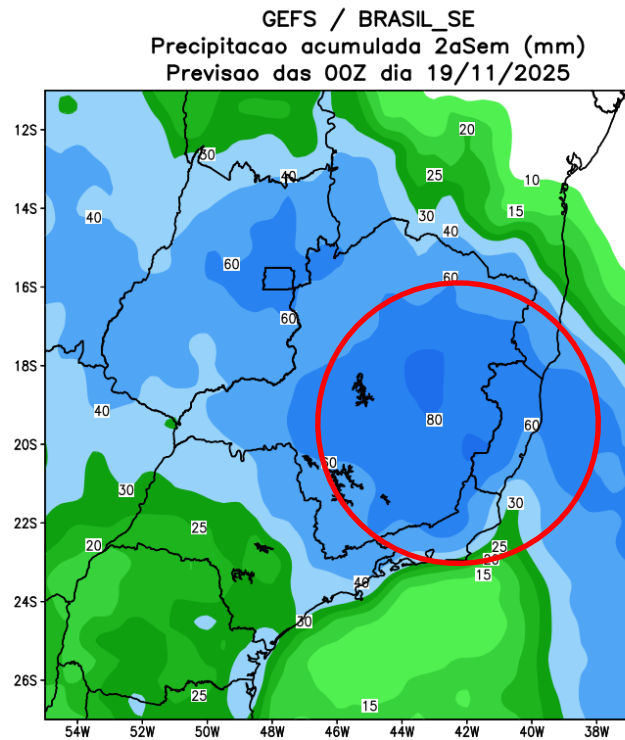


Previsão de chuva para os próximos 7 dias



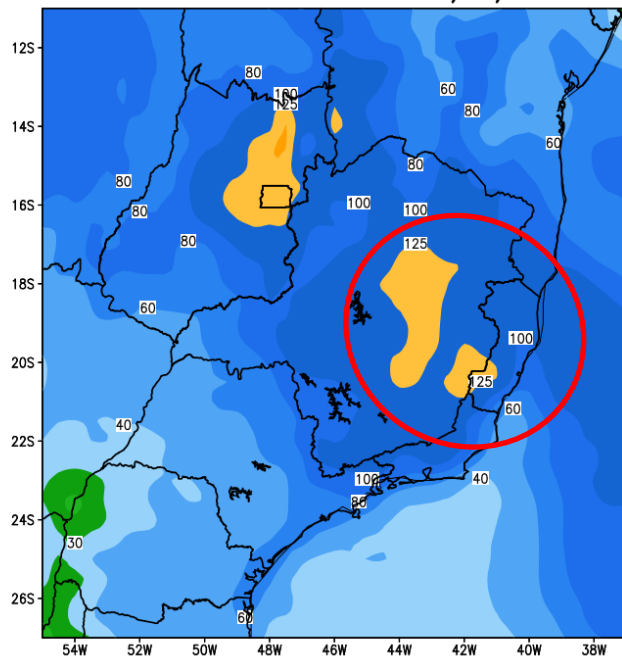
Fonte: GEFS/NOAA

Tendência para a 2ª Semana

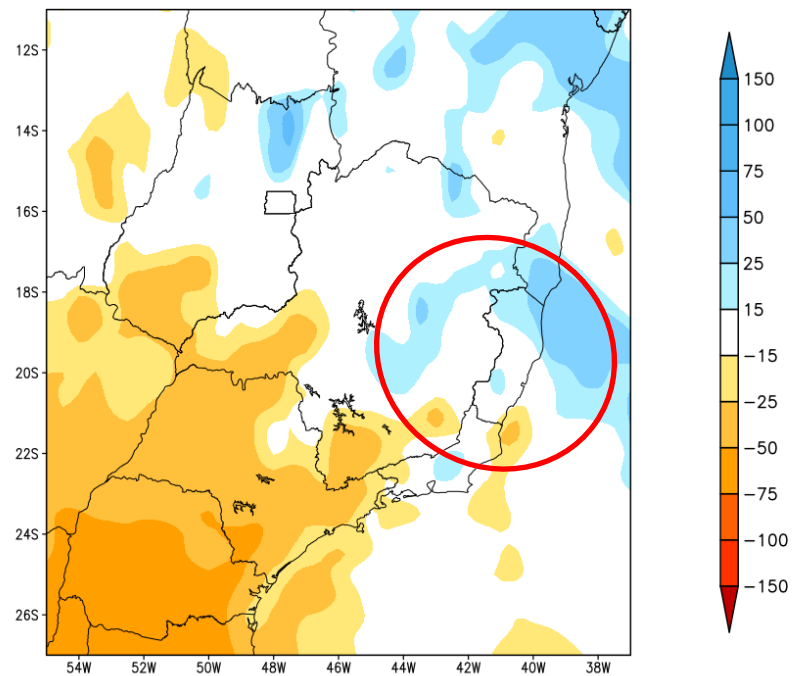


Tendência para as duas próximas semanas

GEFS / BRASIL_SE
Precipitacao acumulada 14dias (mm)
Previsao das 00Z dia 19/11/2025

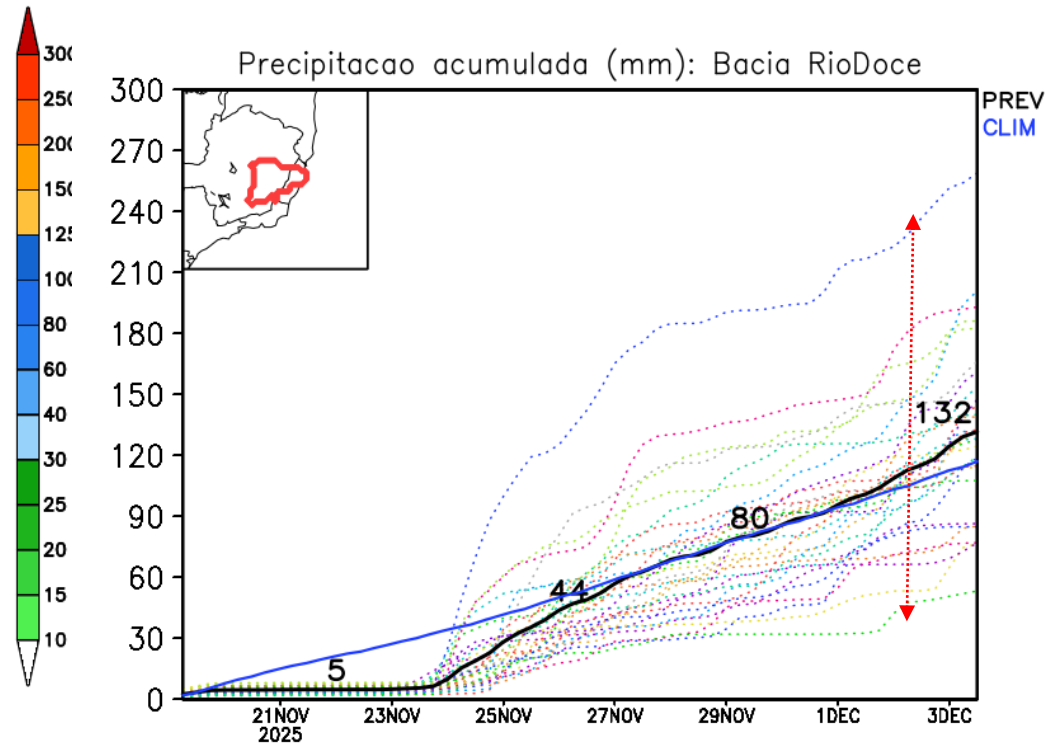
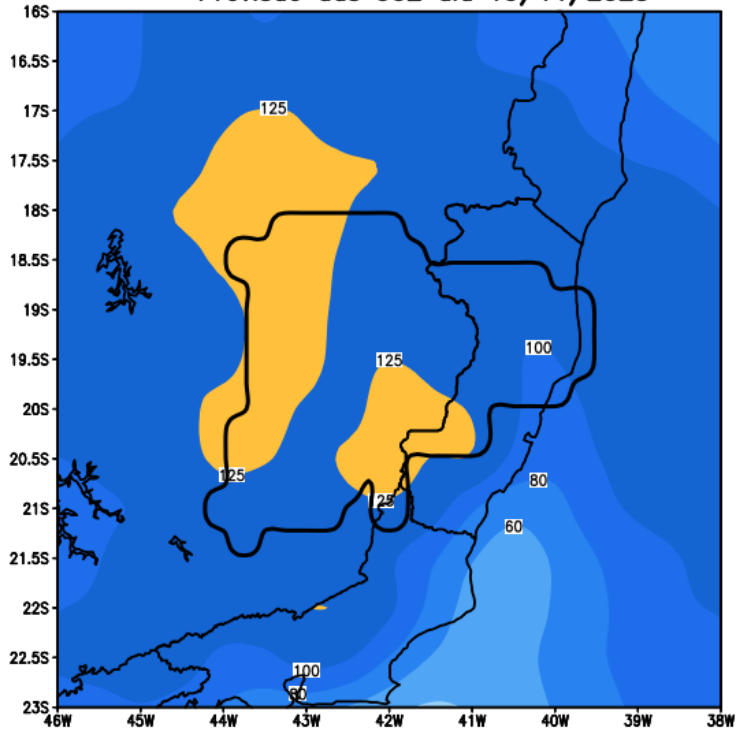


Anomalia de Precipitacao BR_SE (mm)
Período: 2025111900 a 2025120300



Bacia do rio Doce

GEFS / Bacia do Rio Doce
Precipitacao acumulada em 14 dias (mm)
Previsao das 00Z dia 19/11/2025



Fonte: GEFS/NOAA

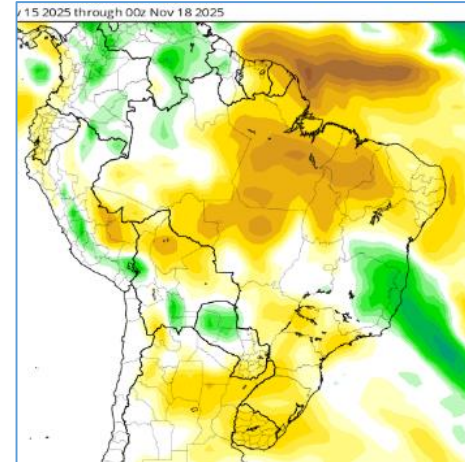
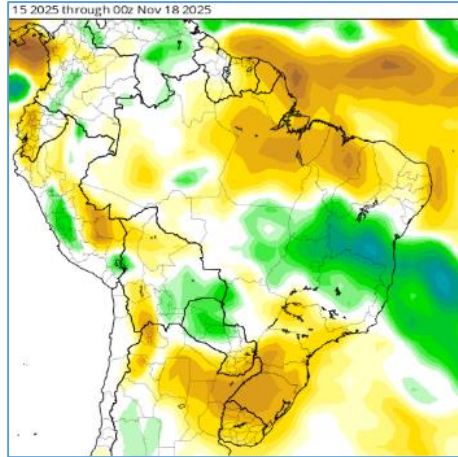
Anomalia de Chuva

3a e 4a semanas

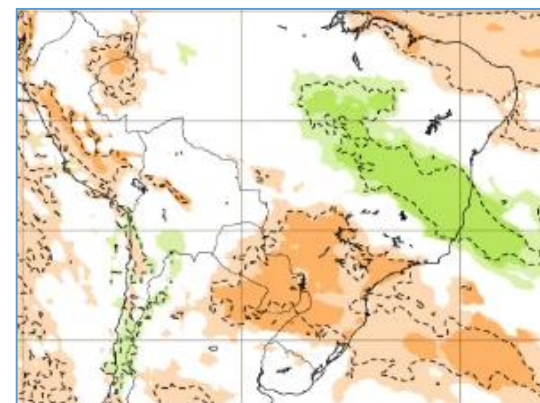
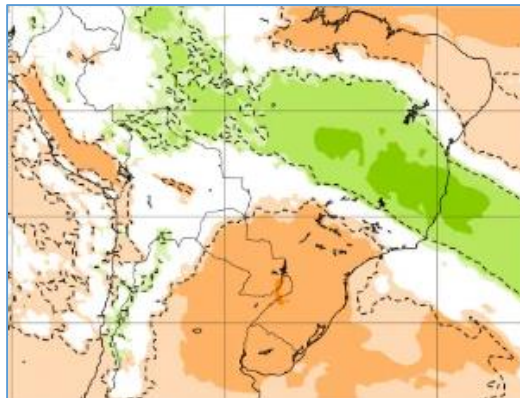
02-09 Dez

09-16 Dez

CFS/NOAA

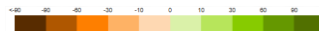


ECMWF



01-08 Dez

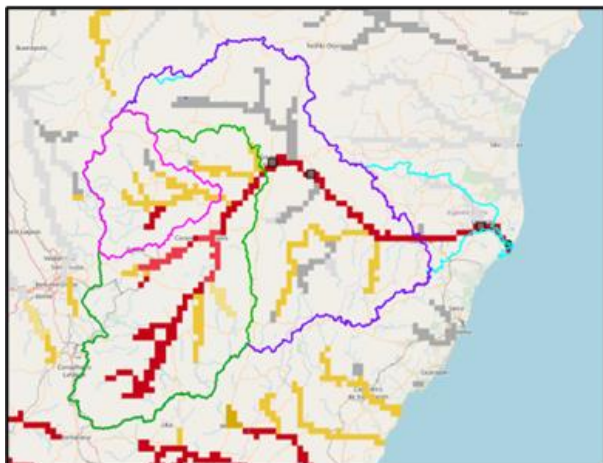
08-15 Dez



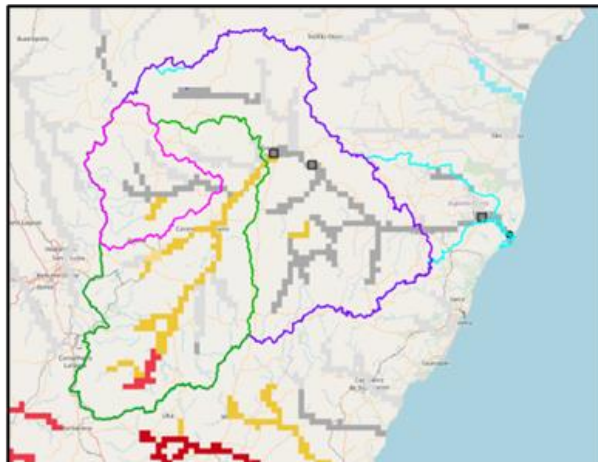
Previsão Sub-sazonal (45 dias) para a Bacia do Rio Doce (Sistema Global de Previsão de Vazão - GloFAS)

Previsão: 24/11/2025 – 29/12/2025

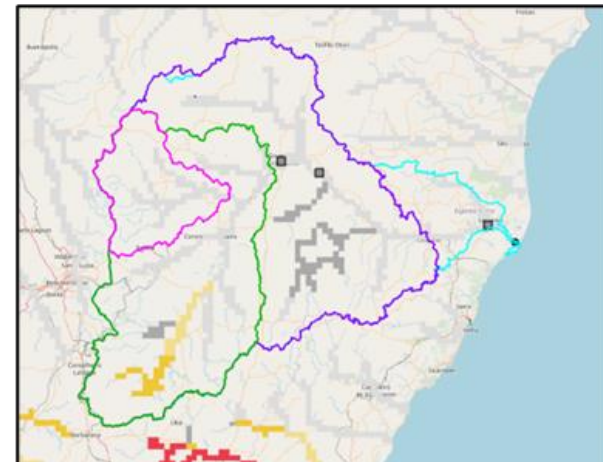
24/11-30/11



01/12-07/12



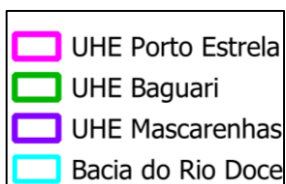
08/12-14/12



15/12-21/12



22/12-29/12



Categoria de anomalia de vazões (percentil)

Categoria de incerteza

Baixa (0-10) Média (10-20) Alta (<20)

Muito abaixo (1-10)



Abaixo (10-25)



Média (25-75)



Acima (75-90)



Muito acima (90-100)



Fonte: Previsão Meteorológica: ECMWF

Previsão de vazão: Lisflood/GloFAS Forecast

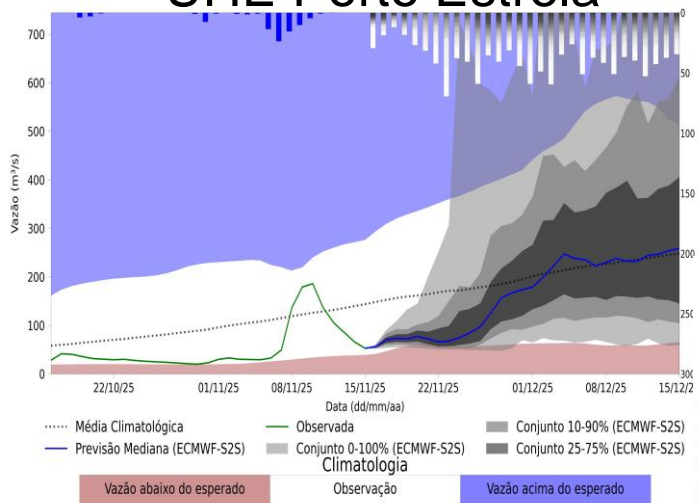
<https://www.globalfloods.eu/glofas-forecasting/>



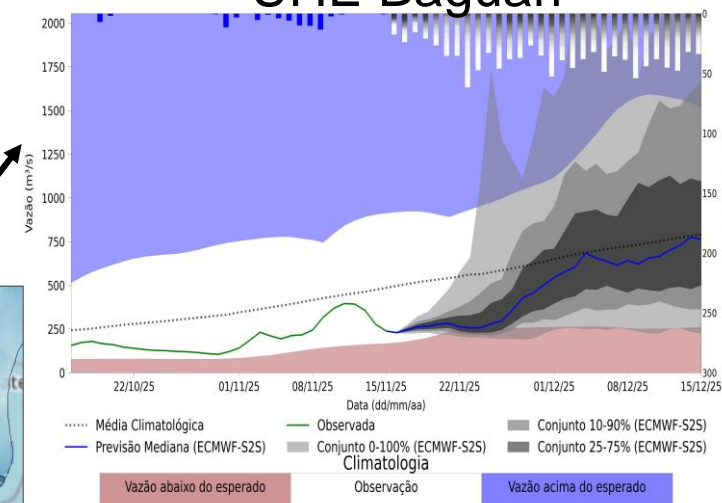
Previsão de vazão natural na Bacia Rio Doce

Previsão: 15/11/2025 a 15/12/2025

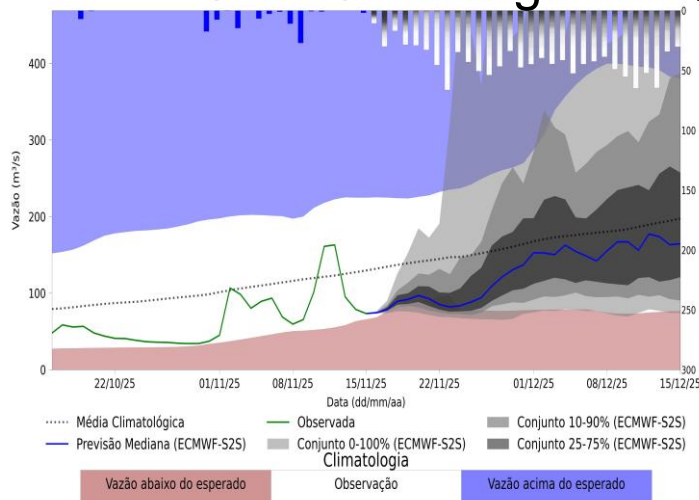
UHE Porto Estrela



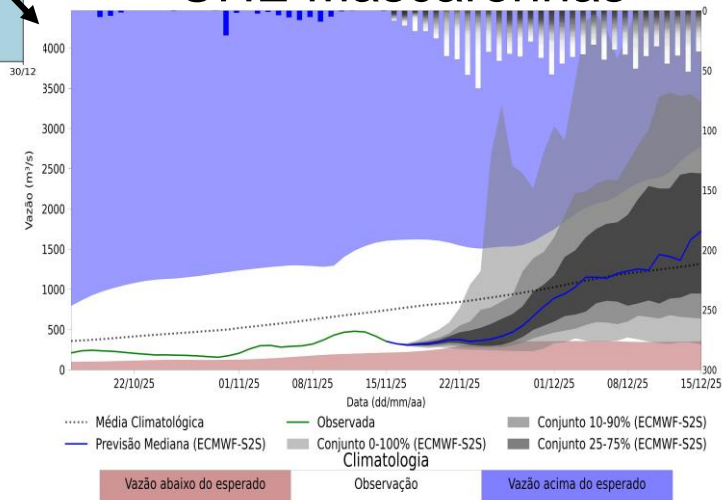
UHE Baguari



UHE Candonga



UHE Mascarenhas



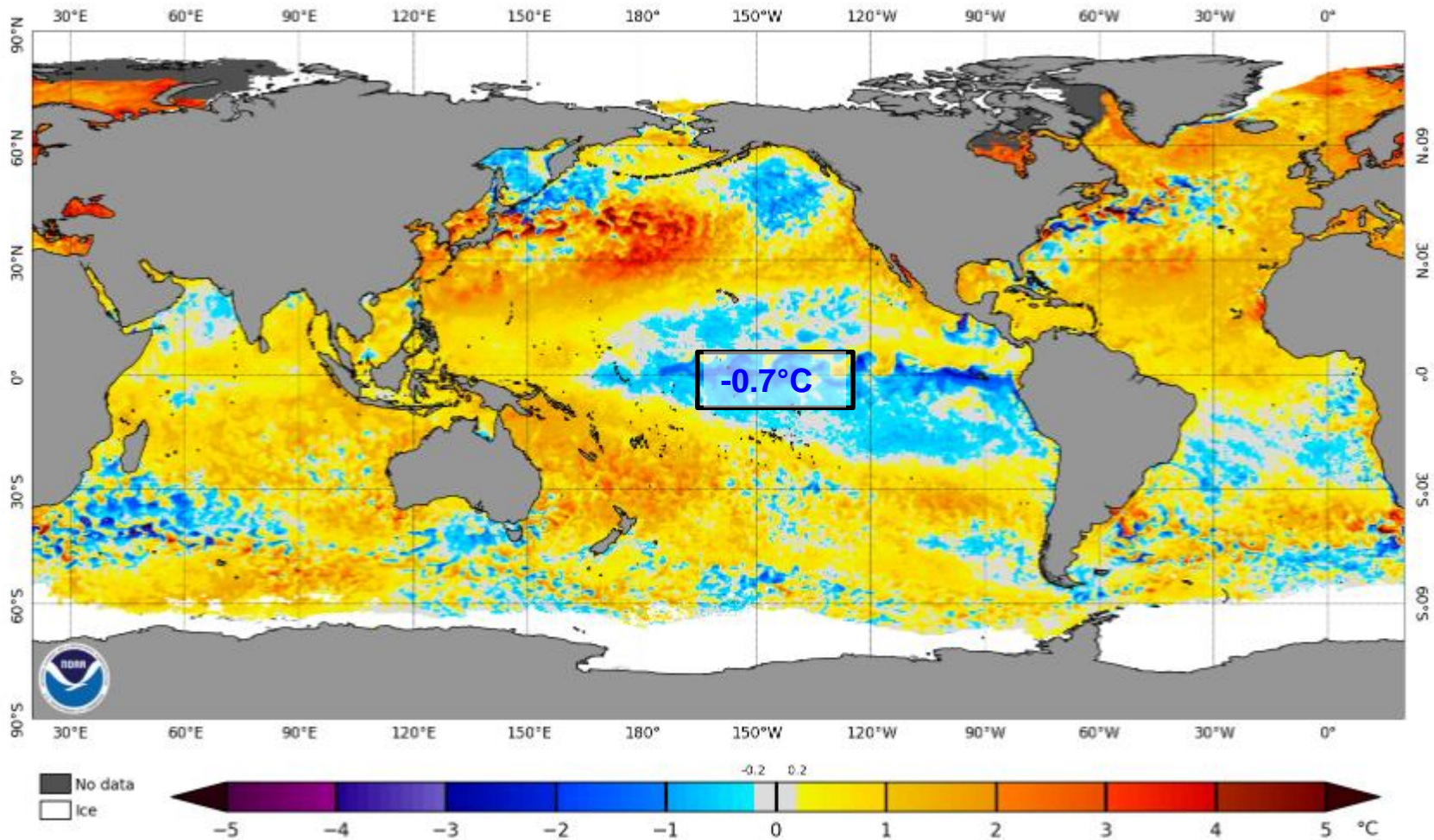
**Fonte: Meteorologia
(INMET/MERGE); Vazão
(ANA/ONS)**

MLT: 1993-2024

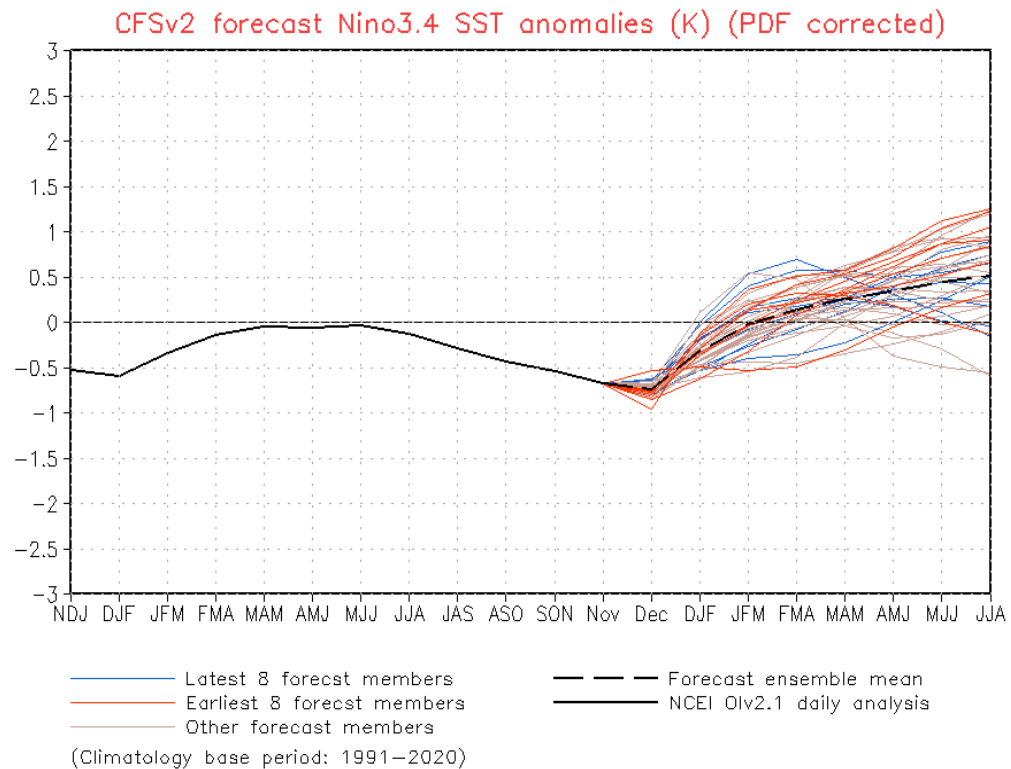
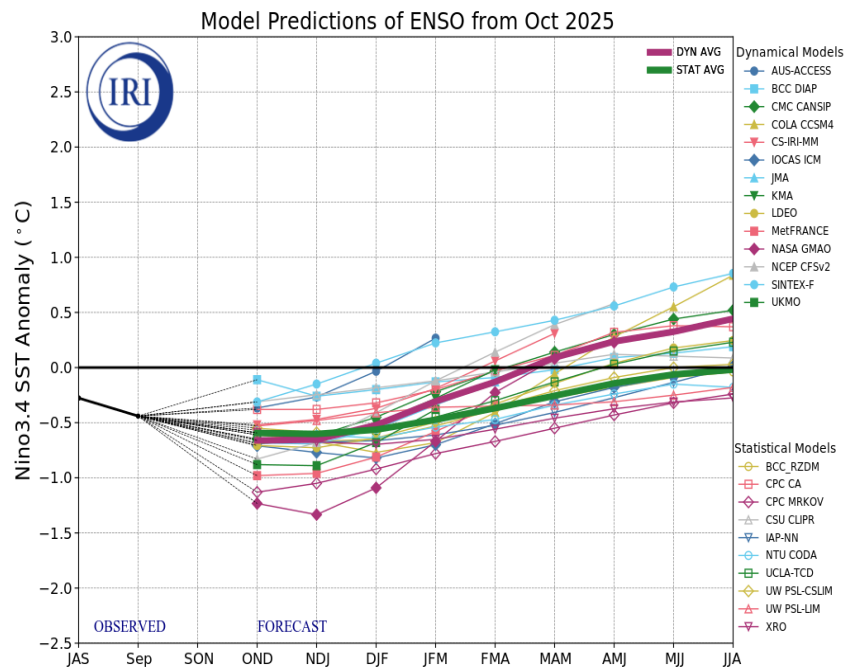
**Previsão Meteorológica:
ECMWF-S2S**

Status Atual: La Niña

NOAA Coral Reef Watch Daily 5km SST Anomalies (v3.1) 16 Nov 2025

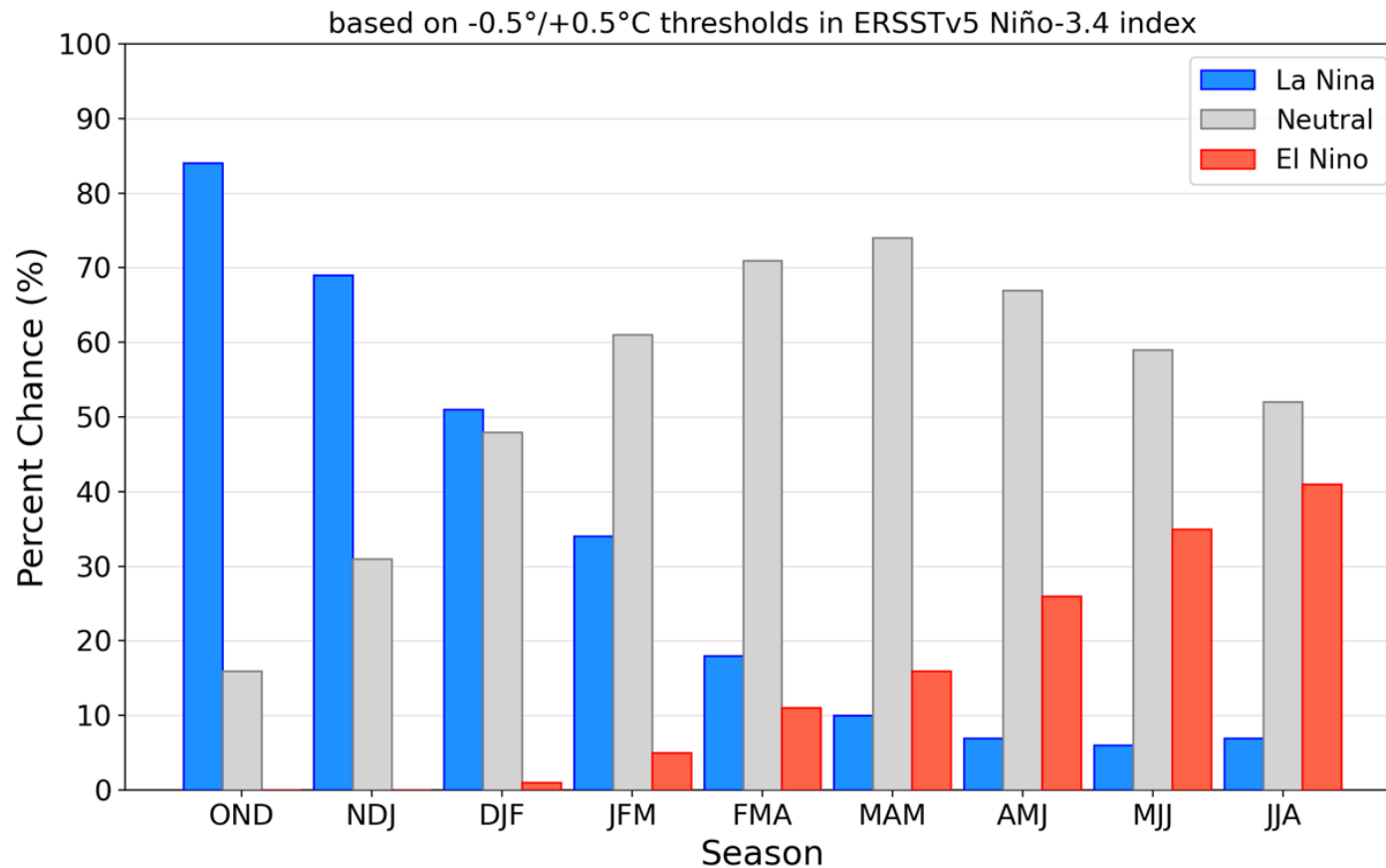


Previsão do “ENSO”



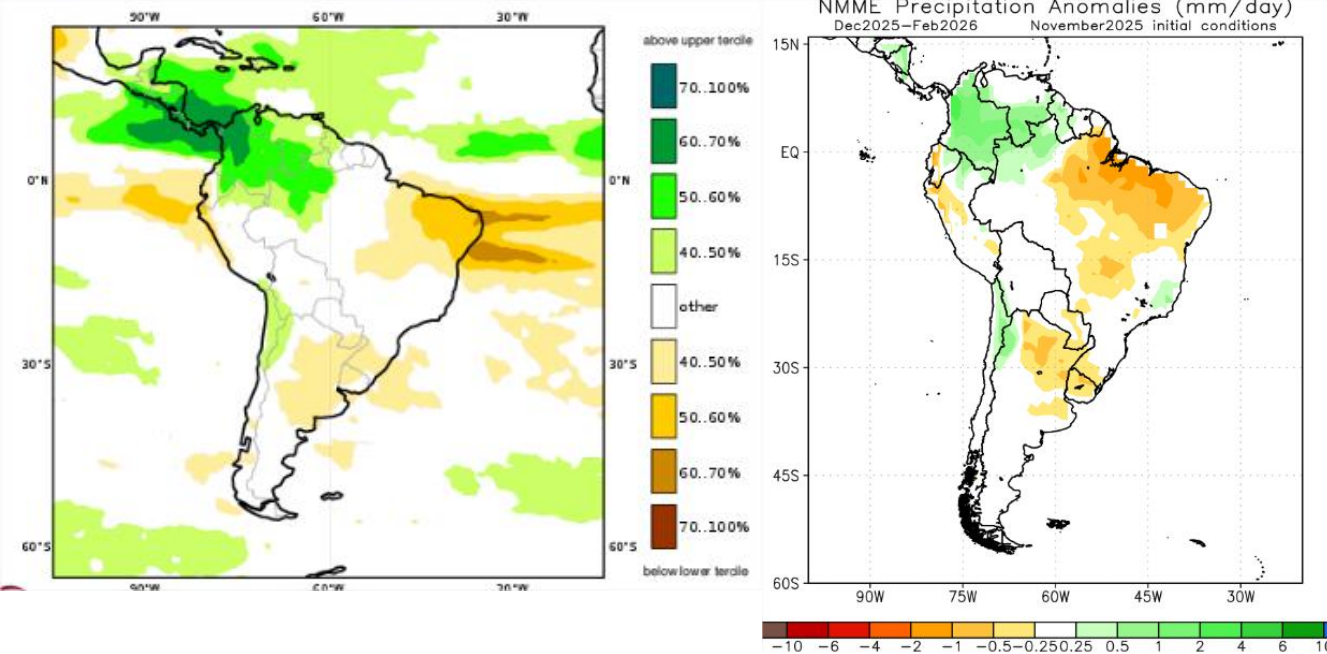
Previsão do “ENSO”

Official NOAA CPC ENSO Probabilities (issued November 2025)



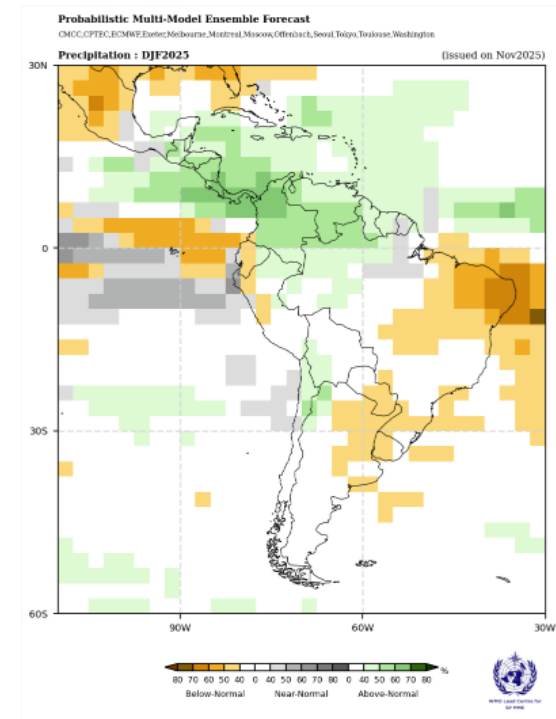
Previsão Sazonal de Chuva Multi-Modelo

Dezembro-Janeiro-Fevereiro



Modelos Europeus

Modelos Norte Americanos



Modelos da WMO