



# Sistema de Alerta Hidrológico - SGB

**Artur Matos**

*Sistema de Alerta Hidrológico*

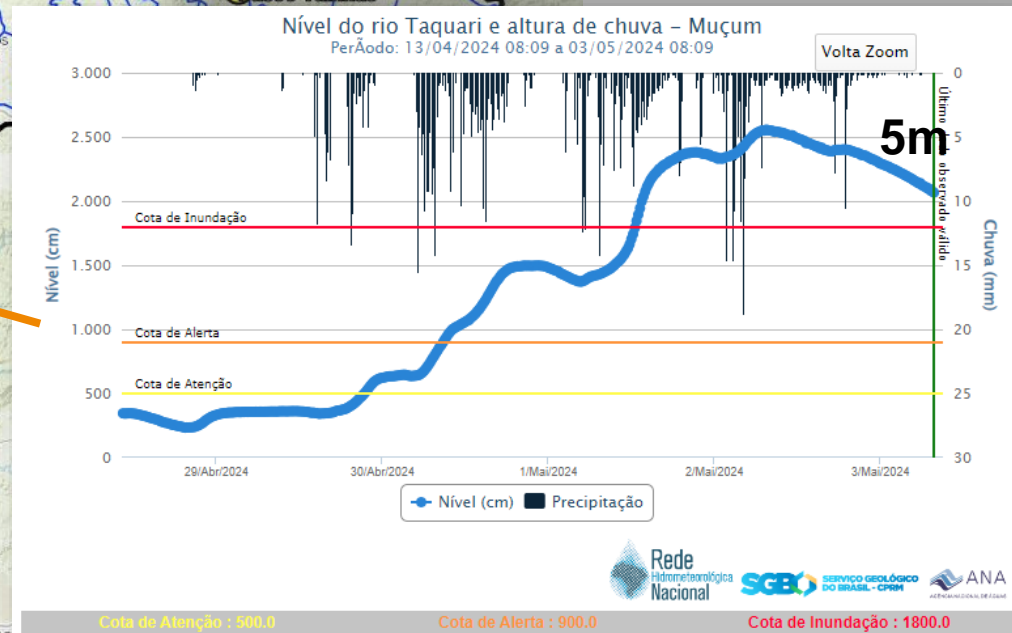
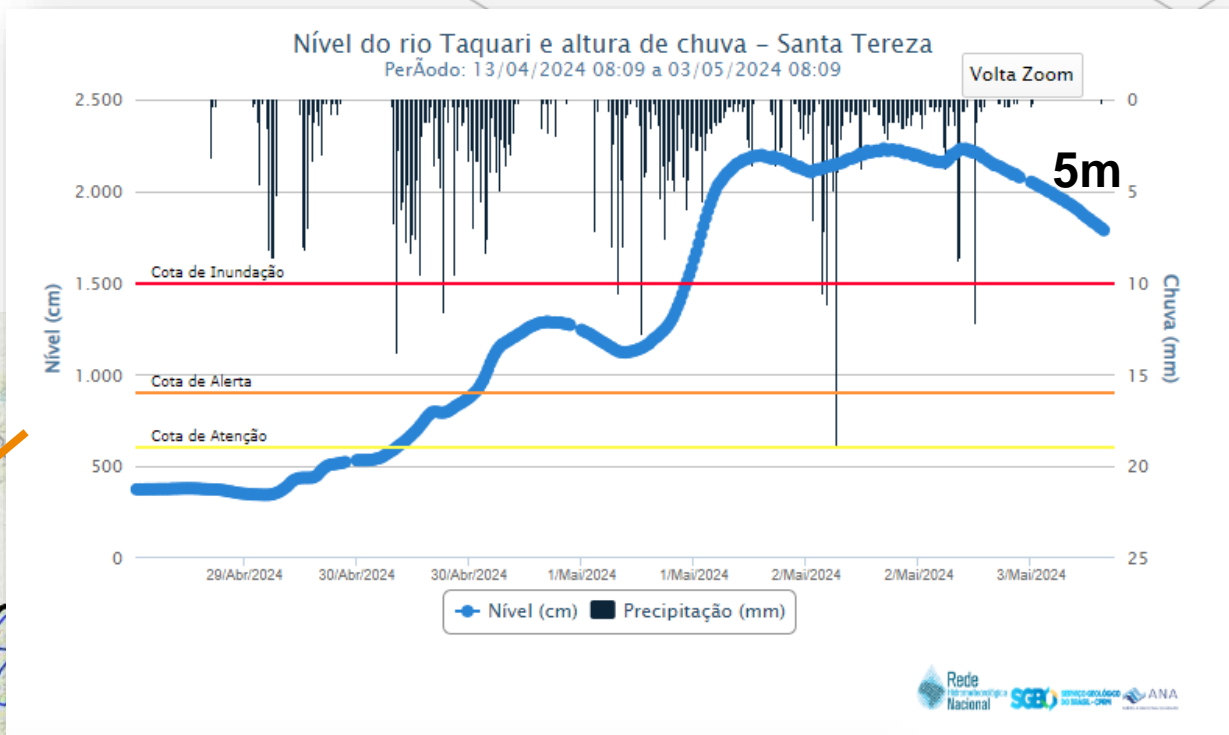
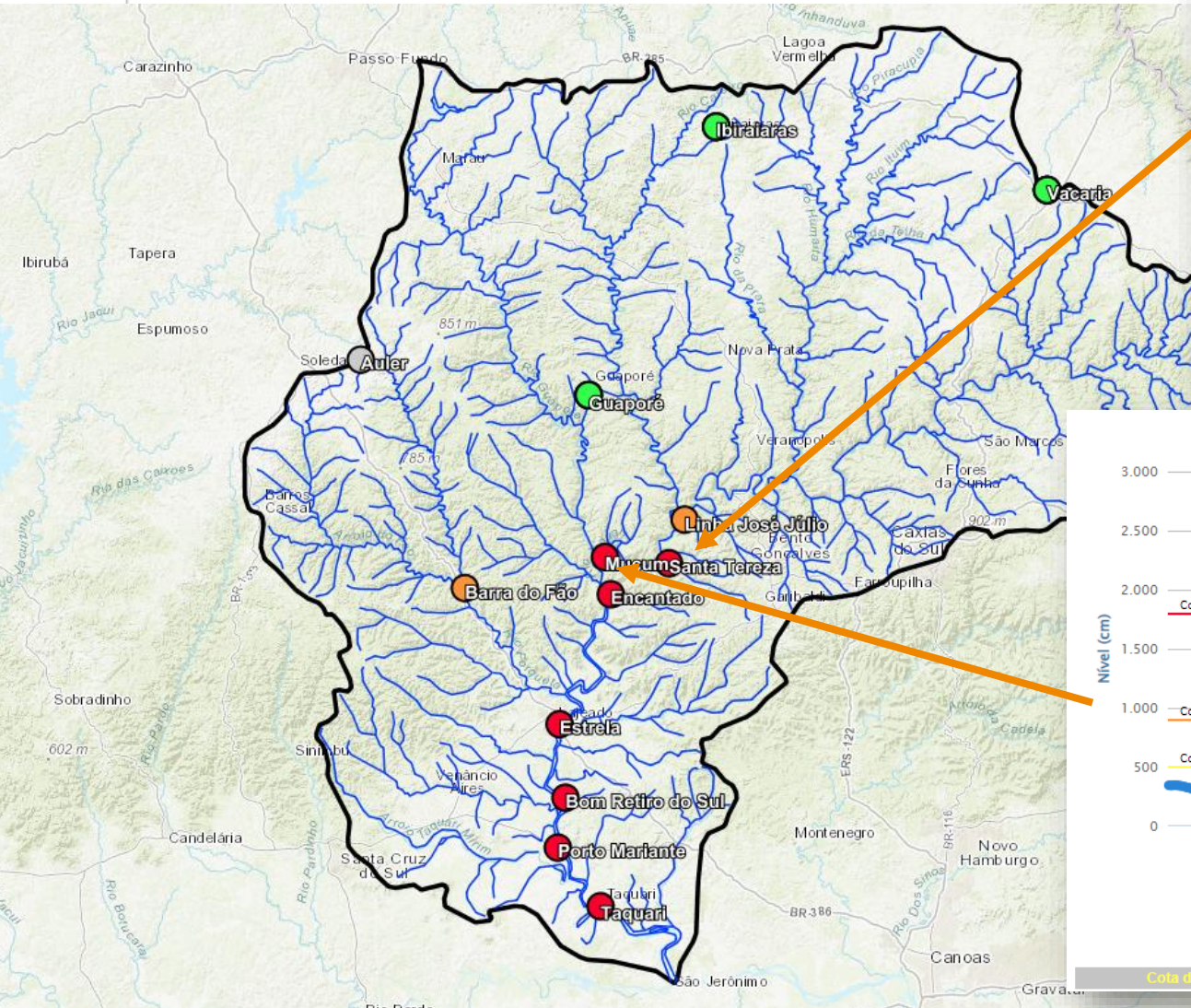
*Serviço Geológico do Brasil - CPRM*



**MINISTÉRIO DE  
MINAS E ENERGIA**



# Bacia do rio Taquari

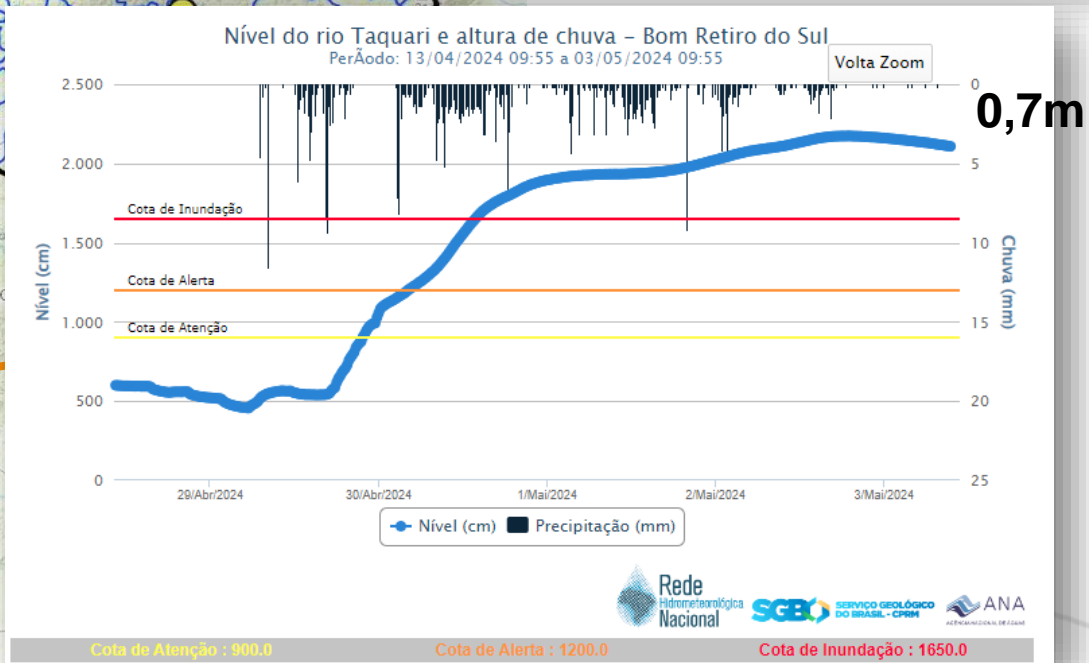
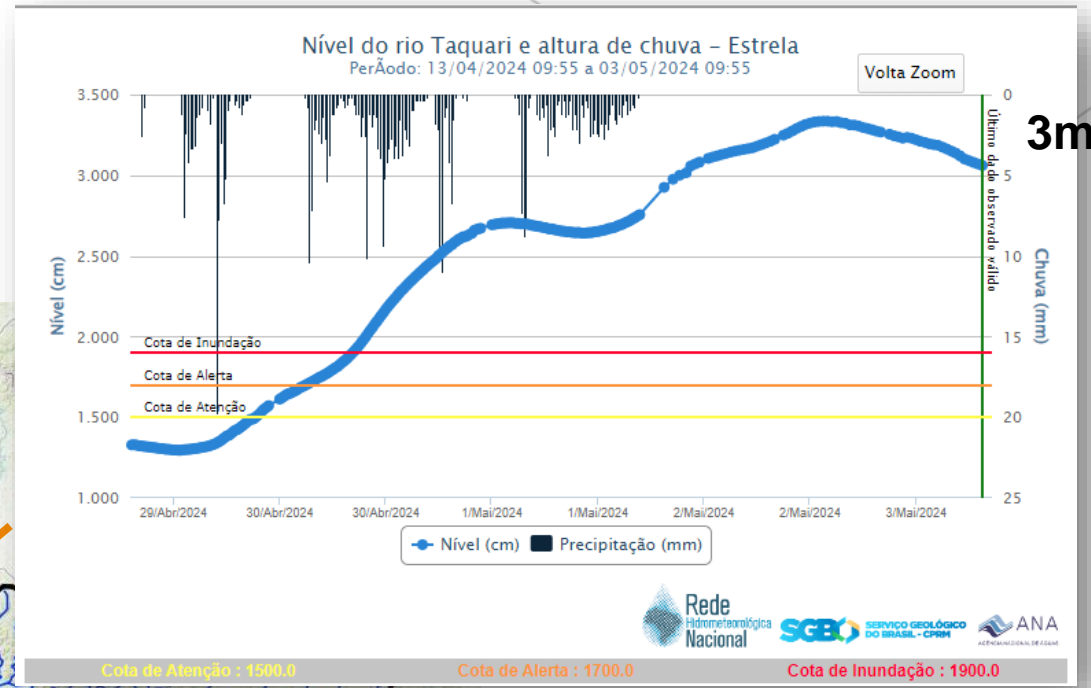
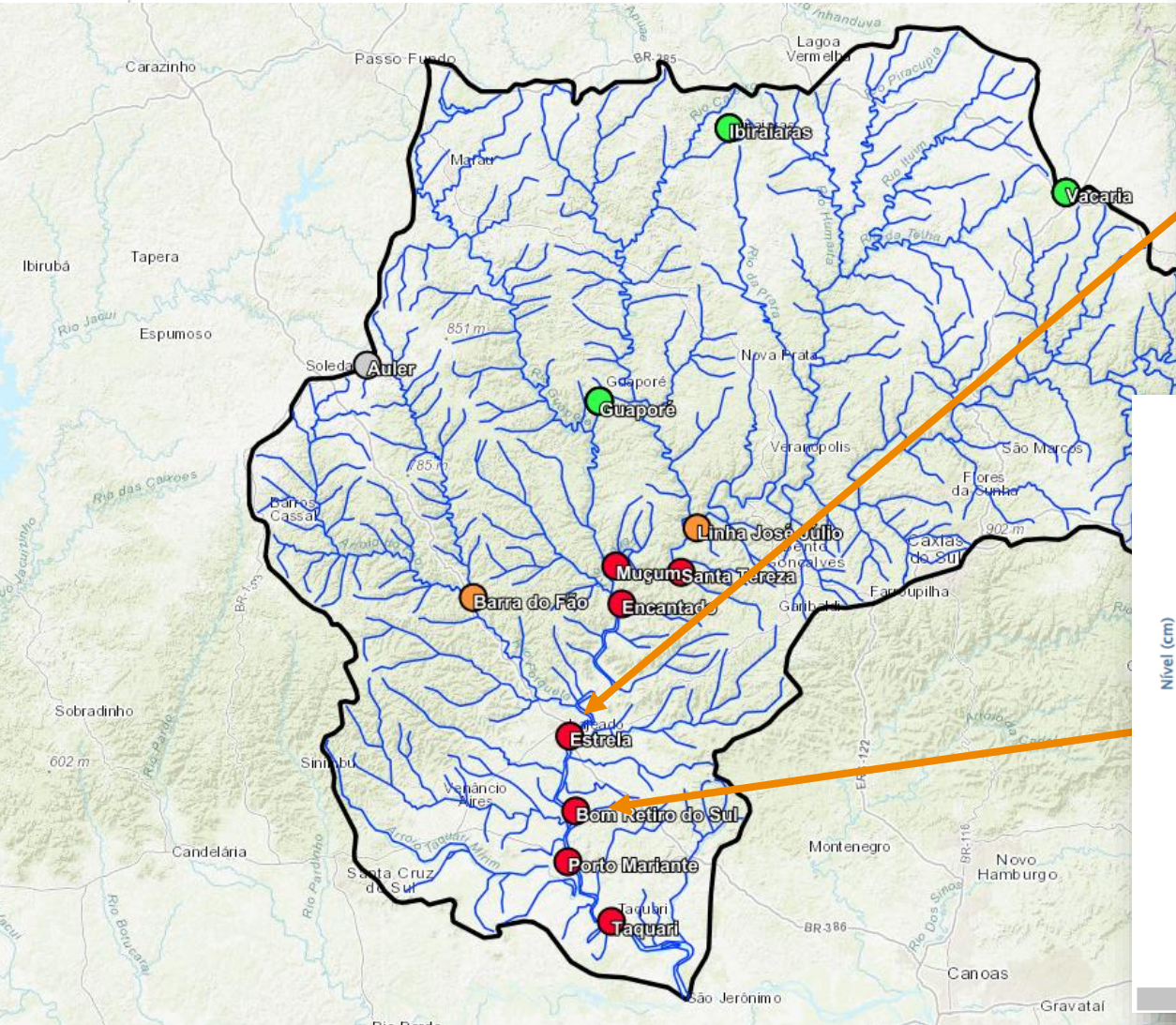


Cota de Atenção : 500,0

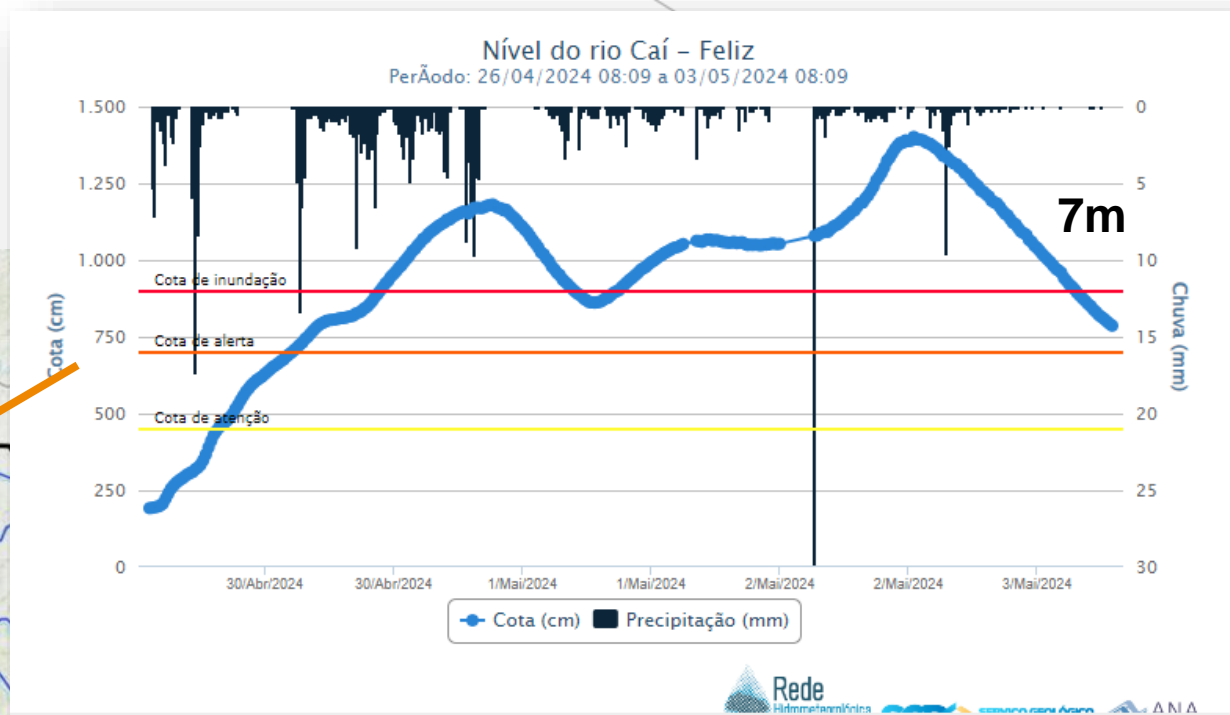
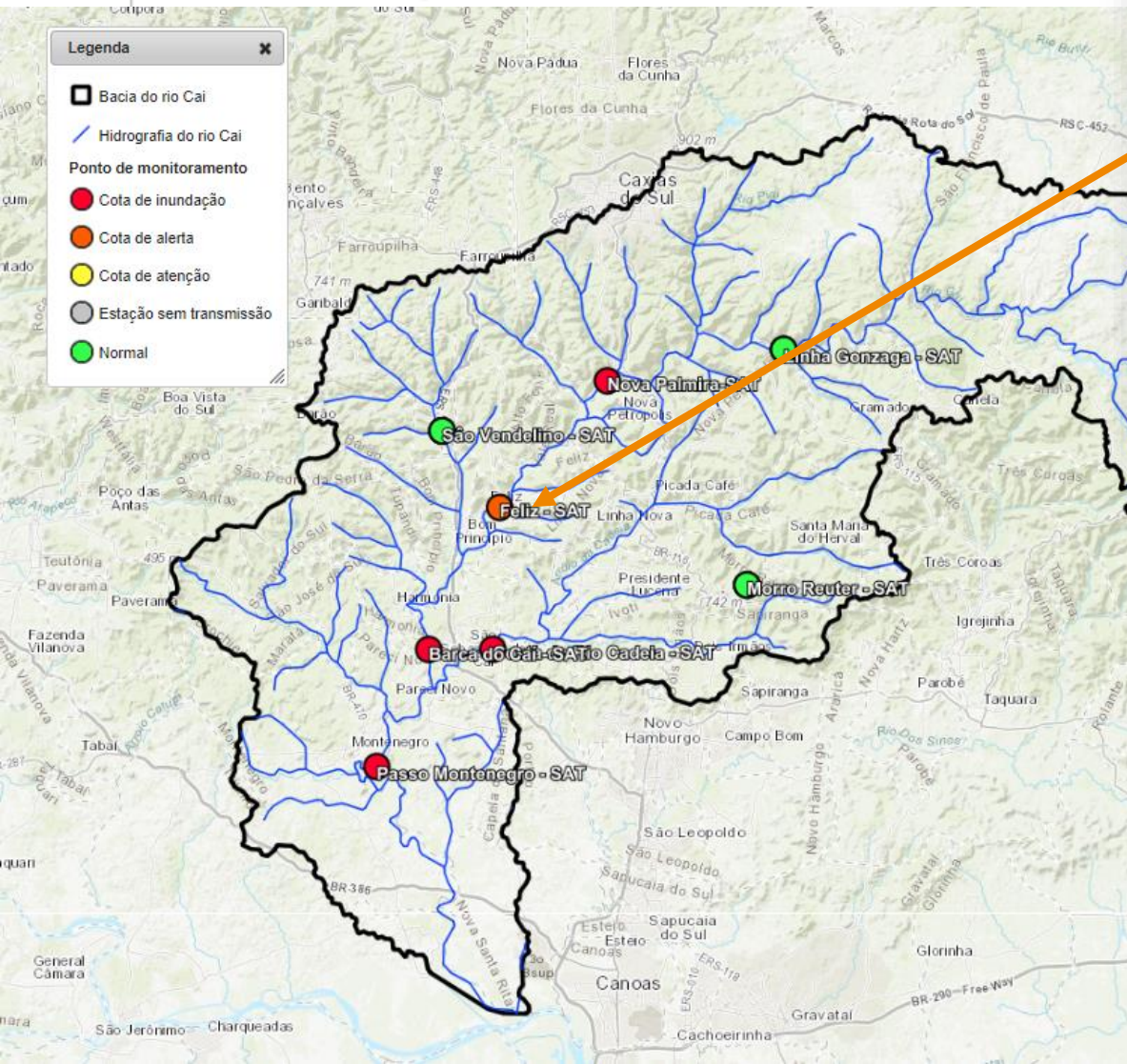
Cota de Alerta : 900,0

Cota de Inundação : 1800,0

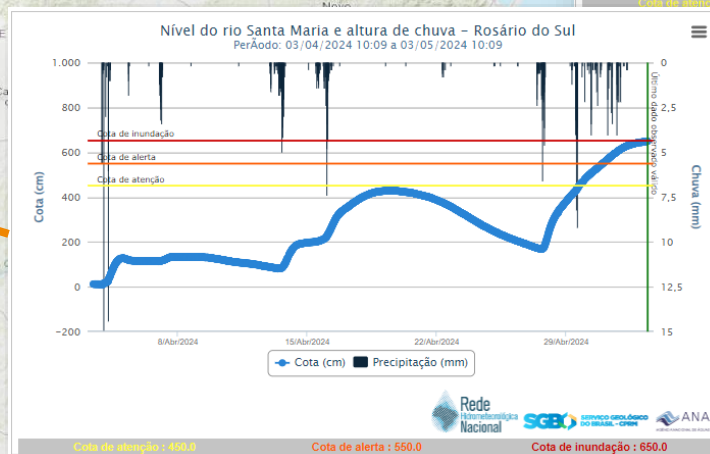
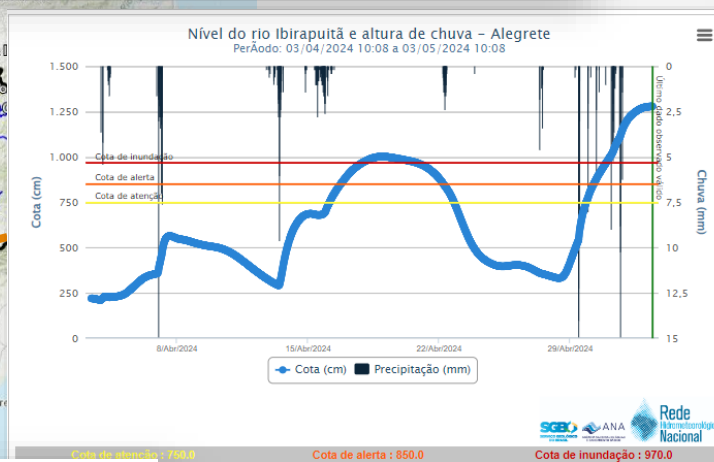
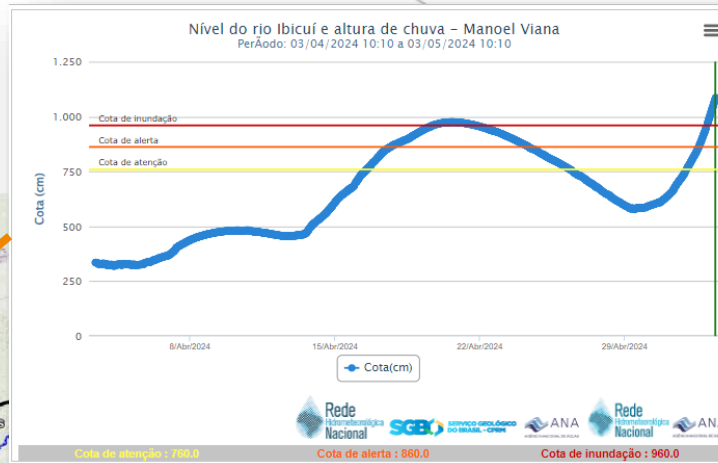
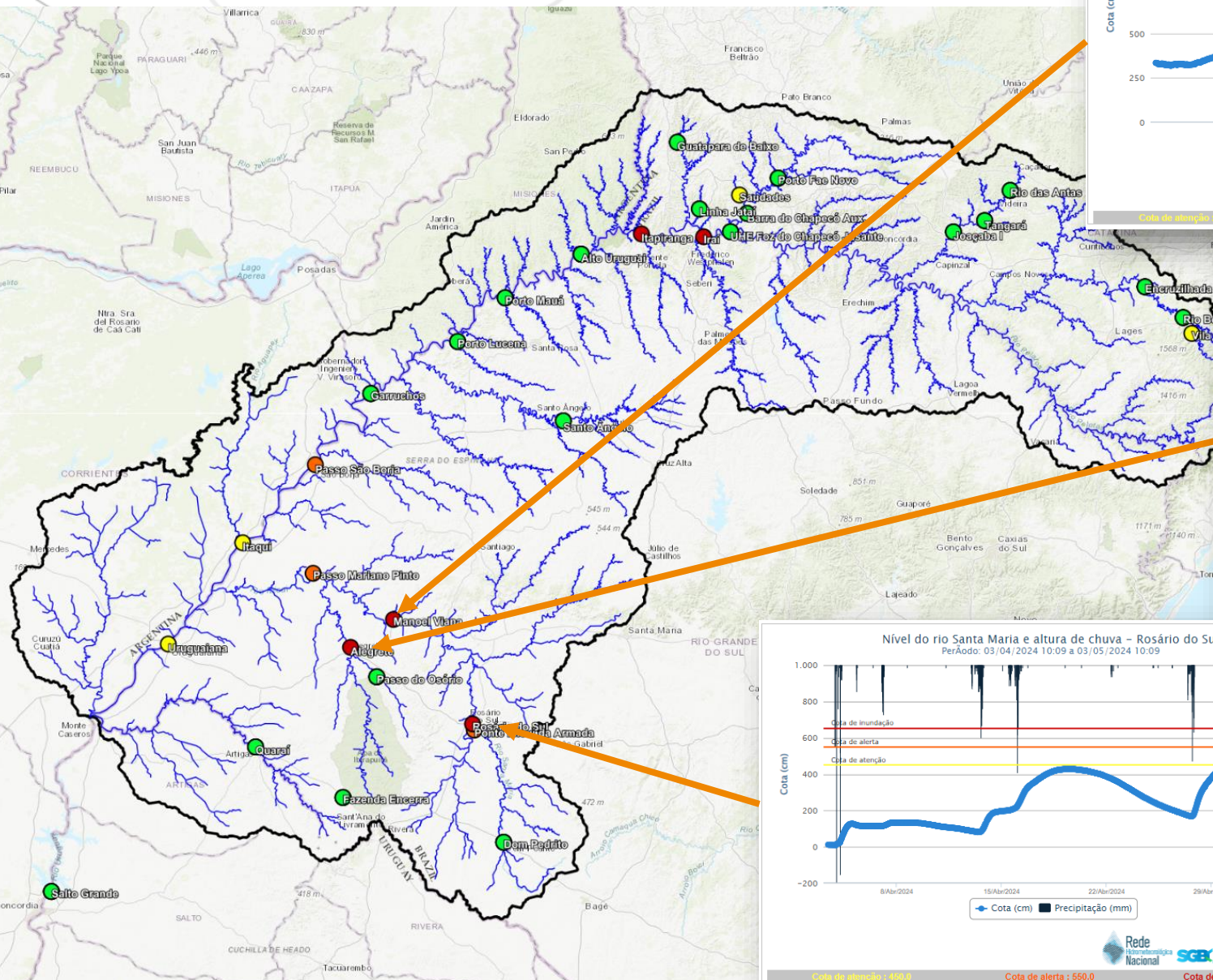
# Bacia do rio Taquari



# Bacia do rio Caí

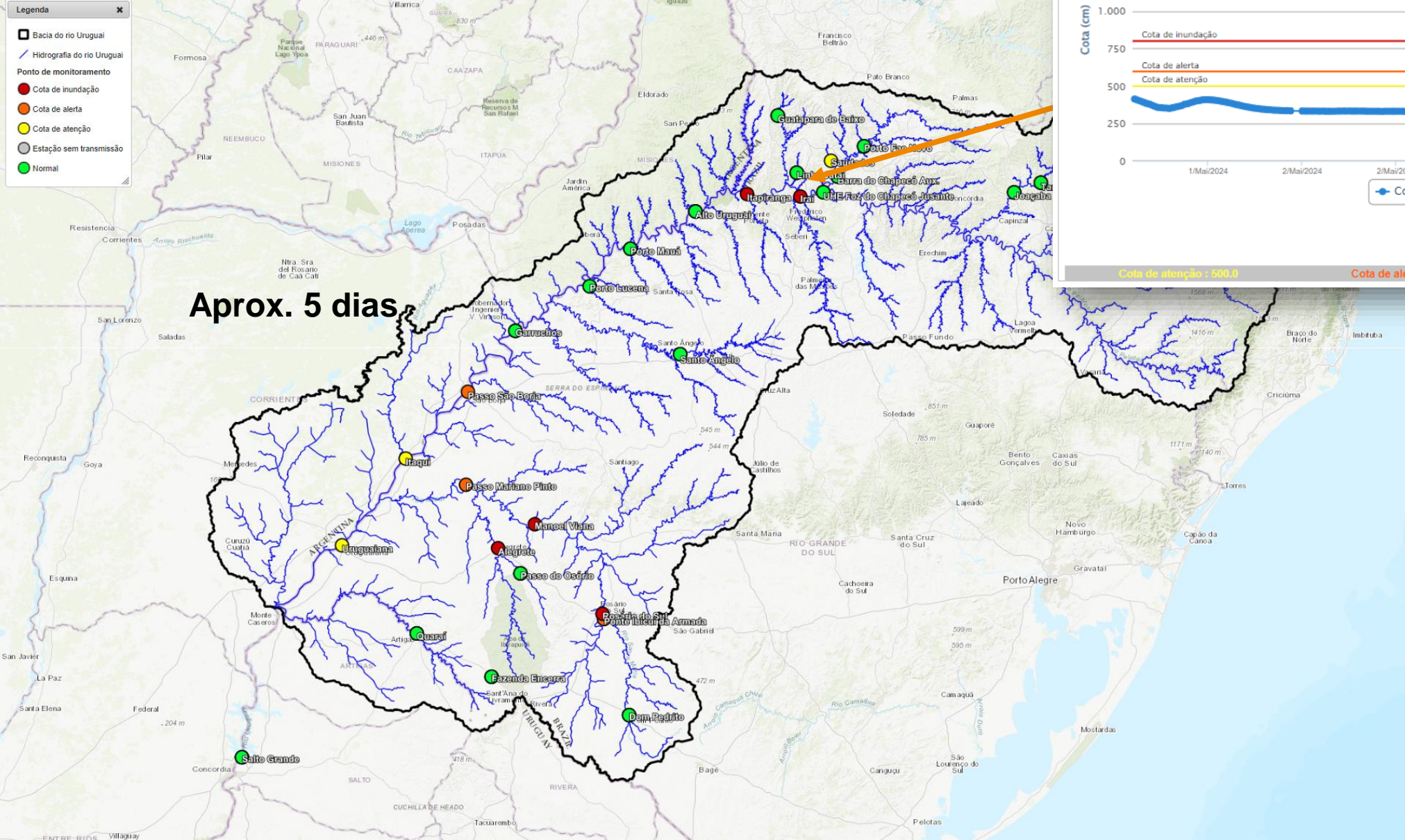


# Bacia do rio Uruguai



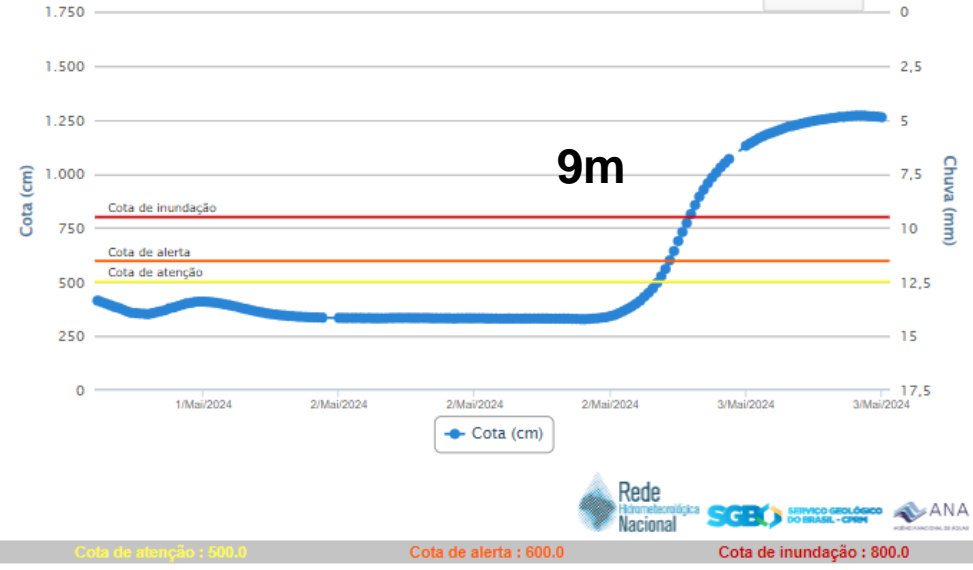
# Bacia do rio Uruguai

- Legenda**
- Bacia do rio Uruguai
  - Hidrografia do rio Uruguai
  - Ponto de monitoramento
  - Cota de inundação
  - Cota de alerta
  - Cota de atenção
  - Estação sem transmissão
  - Normal



Nível do rio Uruguai e altura de chuva - Iraí  
Período: 03/04/2024 10:23 a 03/05/2024 10:23

Volta Zoom



Cota de atenção : 500.0      Cota de alerta : 600.0      Cota de inundação : 800.0



**SERVIÇO GEOLÓGICO DO BRASIL**  
**HÁ 51 ANOS TRABALHANDO PARA O**  
**DESENVOLVIMENTO DO PAÍS**



**Artur Matos**  
*Pesquisador em Geociências*

Serviço Geológico do Brasil – sgb

[www.sgb.gov.br](http://www.sgb.gov.br)



MINISTÉRIO DE  
MINAS E ENERGIA

