

# 11ª Reunião da Sala de Crise da Região Sul

## Condições Observadas/Previstas e Prognóstico Climático JFM/2025

Marcelo Schneider  
Meteorologista do INMET



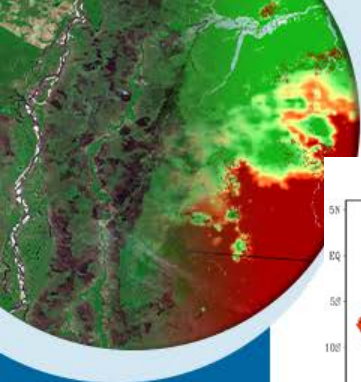
MINISTÉRIO DA  
CIÊNCIA, TECNOLOGIA  
E INOVAÇÃO

MINISTÉRIO DA  
AGRICULTURA E  
PECUÁRIA



Porto Alegre, 13 de NOVEMBRO de 2024.

# ANOMALIAS E PRECIPITAÇÃO 30 DIAS

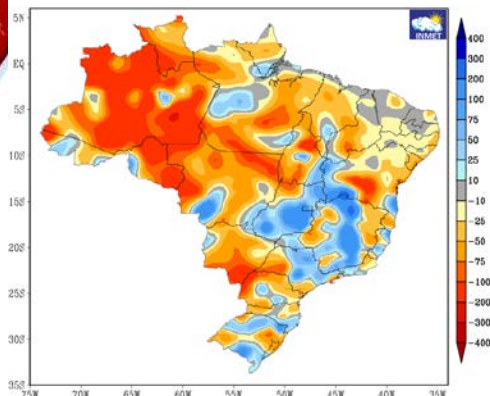


MINISTÉRIO DA  
CIÊNCIA, TECNOLOGIA  
E INOVAÇÃO

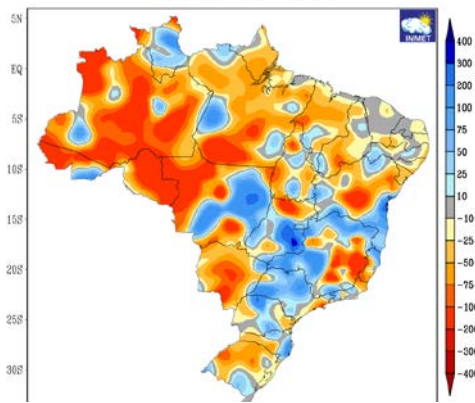
MINISTÉRIO DA  
AGRICULTURA E  
PECUÁRIA

GOVERNO FEDERAL  
**BRASIL**  
UNIÃO E RECONSTRUÇÃO

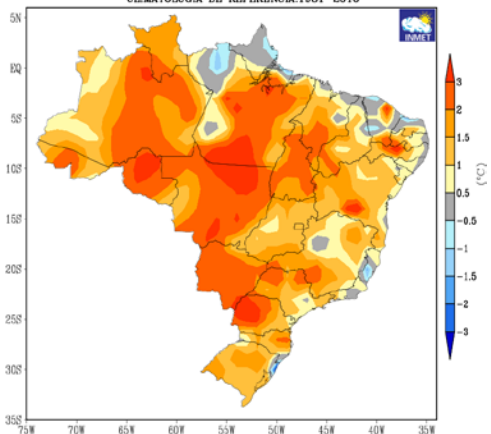
ANOMALIA DE PRECIPITAÇÃO  
VALIDO PARA OUTUBRO DE 2024



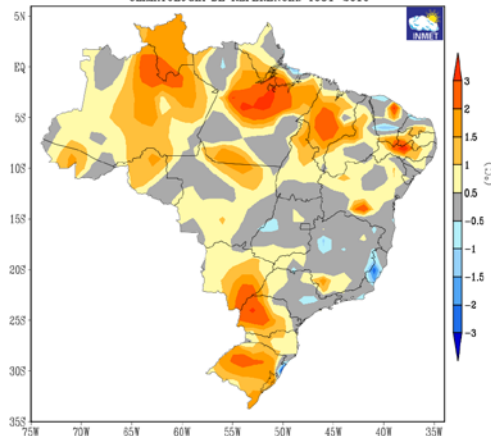
ANOMALIA DE PRECIPITAÇÃO  
VALIDO PARA NOVEMBRO DE 2024



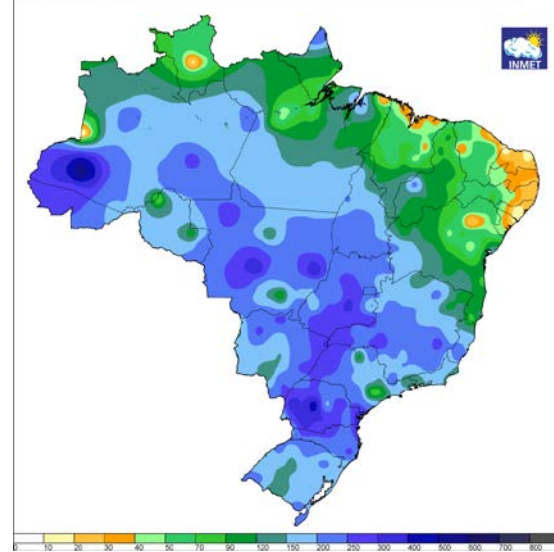
ANOMALIAS DE TEMPERATURAS MÉDIAS  
VALIDO PARA OUTUBRO DE 2024  
CLIMATOLOGIA DE REFERÊNCIA: 1981-2010



ANOMALIAS DE TEMPERATURAS MÉDIAS  
VALIDO NOVEMBRO DE 2024  
CLIMATOLOGIA DE REFERÊNCIA: 1981-2010



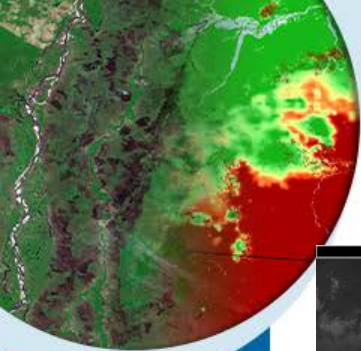
Instituto Nacional de Meteorologia - INMET  
Precipitação Acumulada nos últimos 30 dias  
Mapa do dia 16/12/2024



# Imagem de satélite Goes- Ir termal

17/12/ 17H20

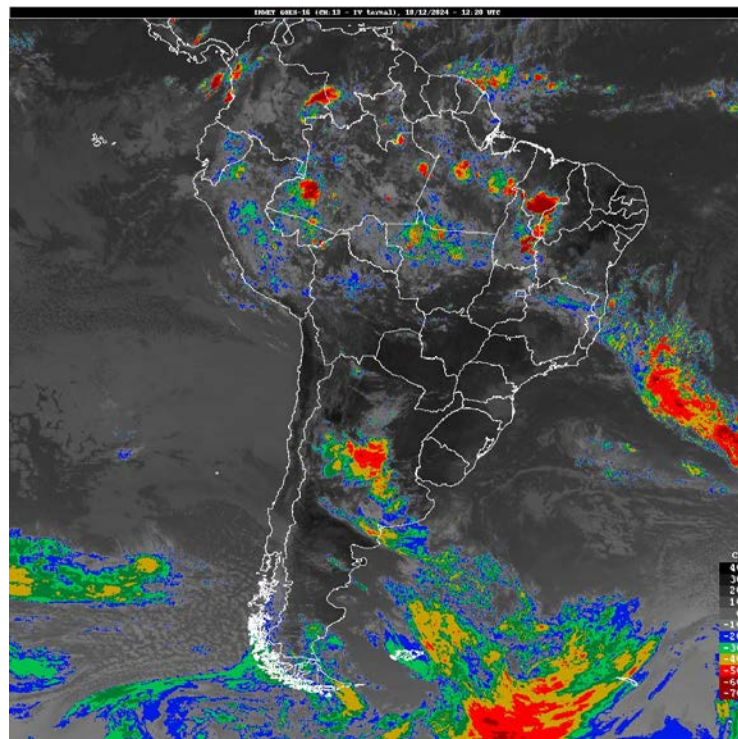
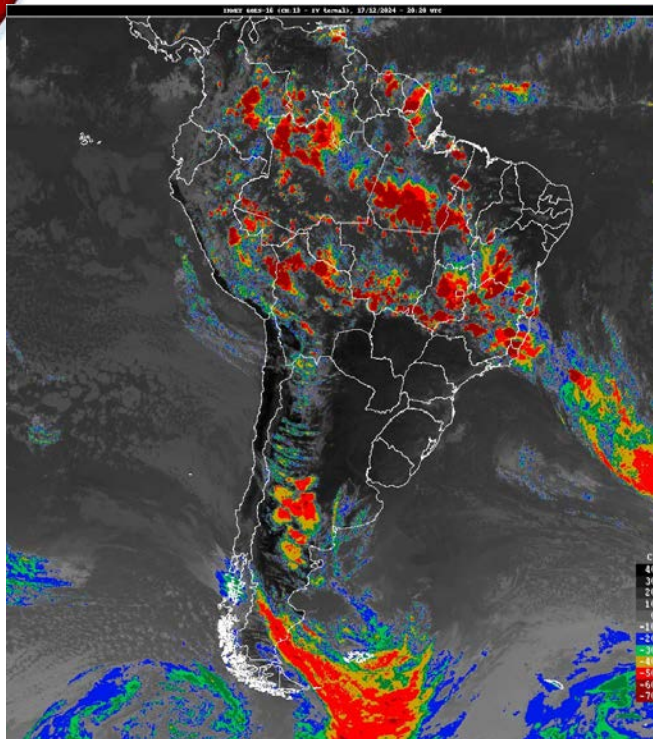
18/12 09H20



MINISTÉRIO DA  
CIÊNCIA, TECNOLOGIA  
E INOVAÇÃO

MINISTÉRIO DA  
AGRICULTURA E  
PECUÁRIA

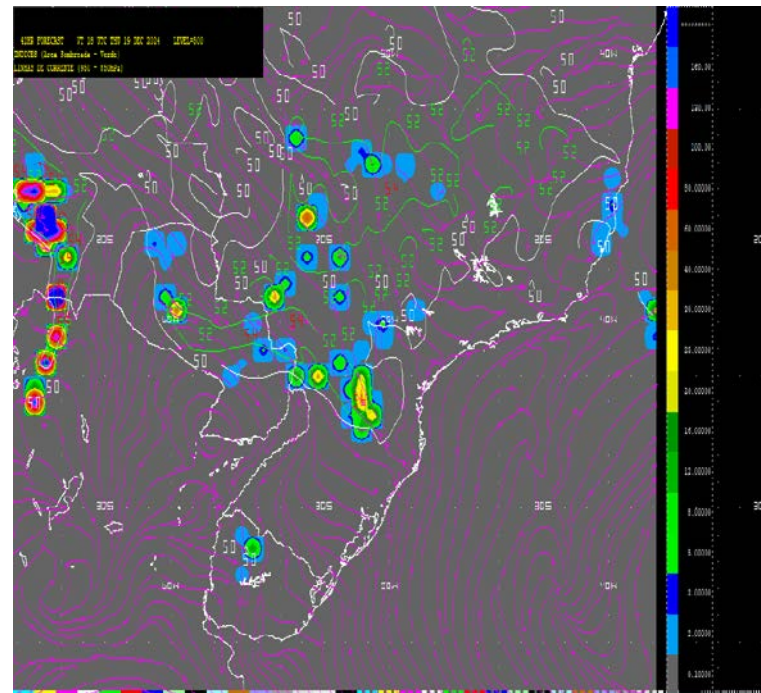
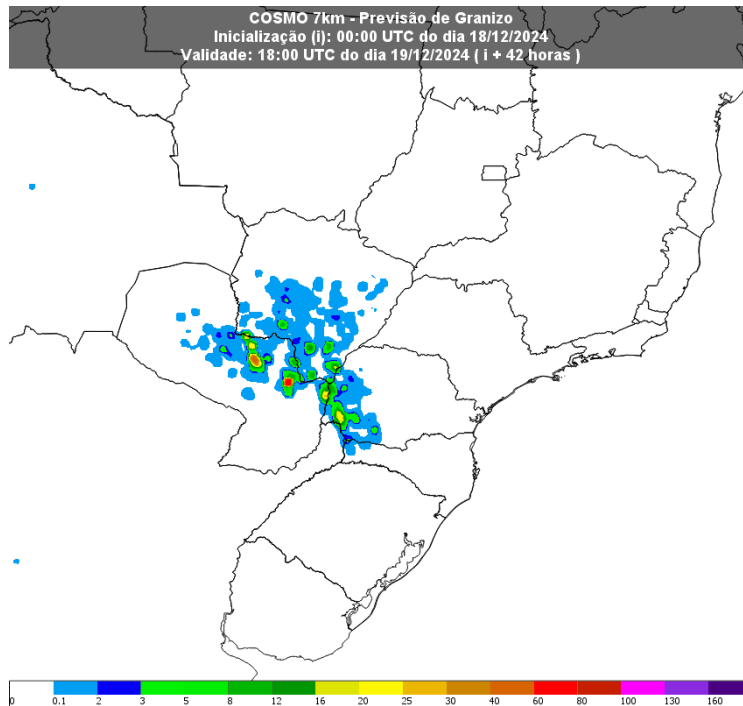
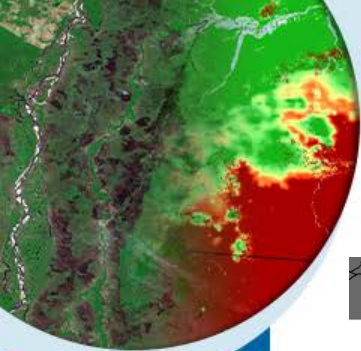
GOVERNO FEDERAL  
**BRASIL**  
UNIÃO E RECONSTRUÇÃO





# GRANIZO COSMO/GFS

## 19/12/24 15H



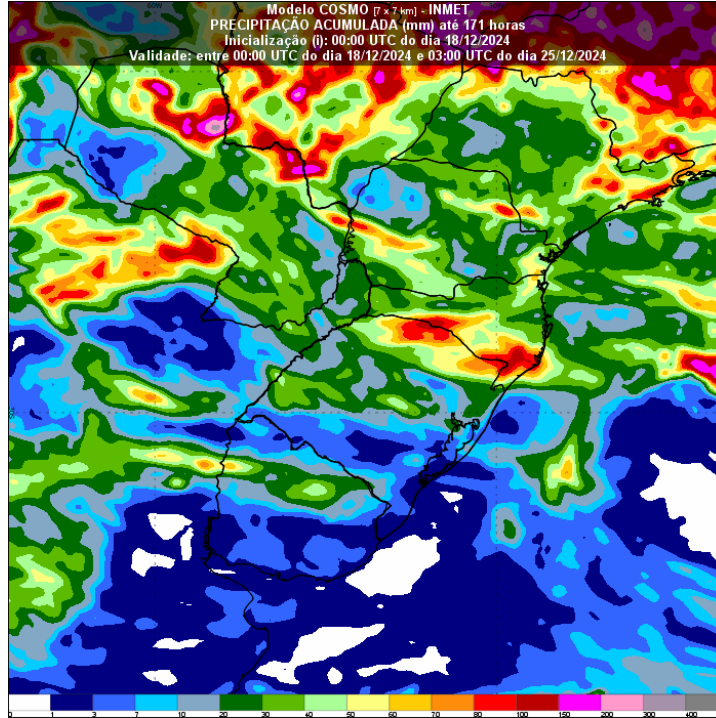
MINISTÉRIO DA  
CIÊNCIA, TECNOLOGIA  
E INOVAÇÃO

MINISTÉRIO DA  
AGRICULTURA E  
PECUÁRIA

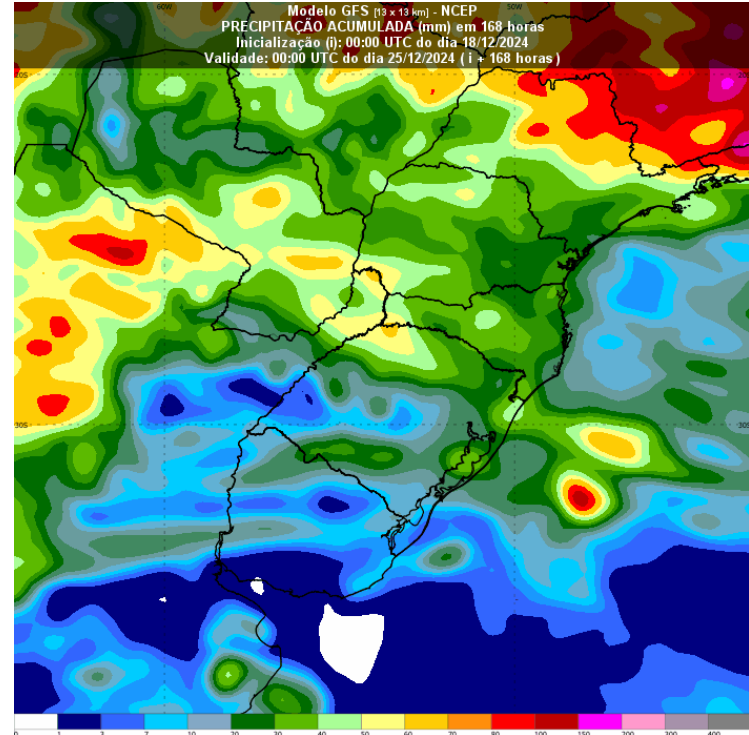


# PERCIPITAÇÃO EM 7 DIAS ATÉ 24/12 Terça-feira

## COSMO



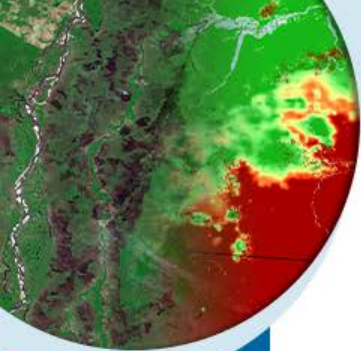
## GFS



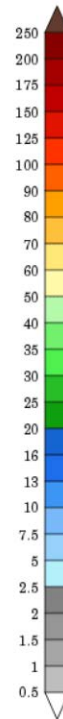
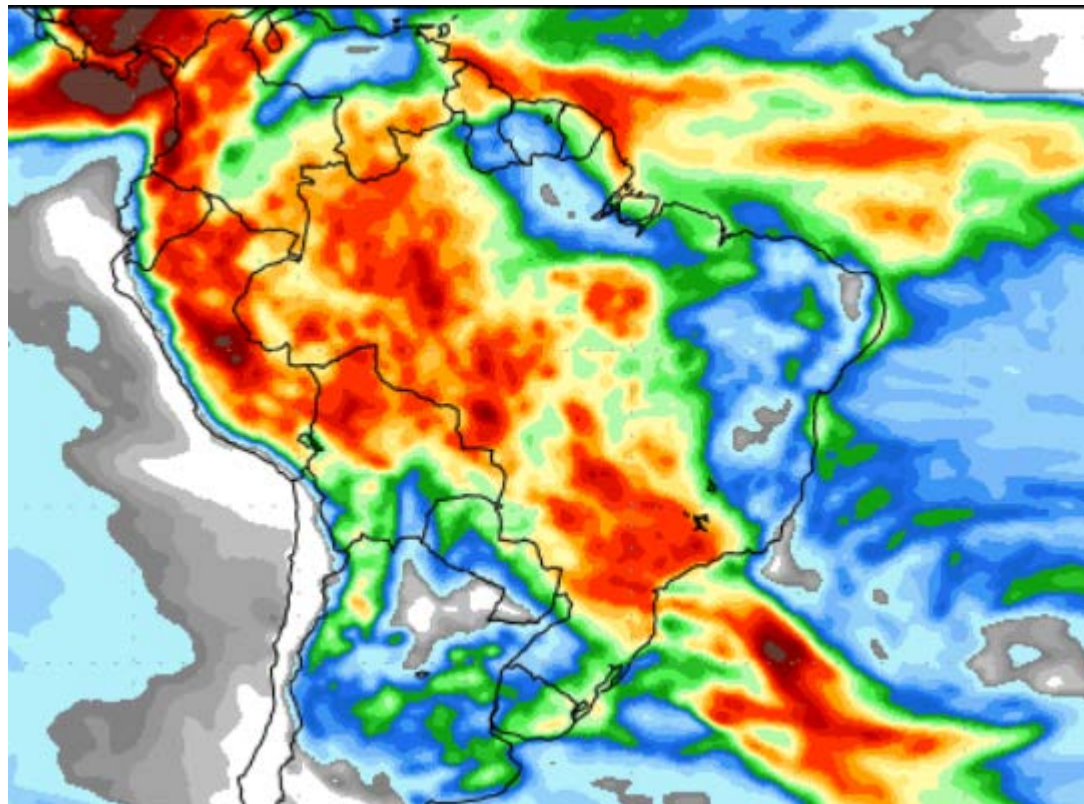
MINISTÉRIO DA  
CIÊNCIA, TECNOLOGIA  
E INOVAÇÃO

MINISTÉRIO DA  
AGRICULTURA E  
PECUÁRIA





# Acumulada entre 26-02 JAN 2025



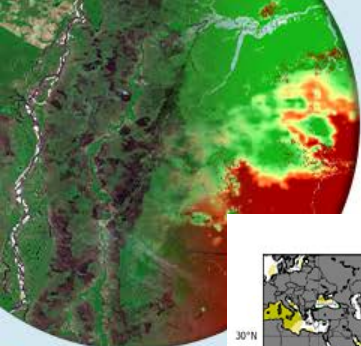
MINISTÉRIO DA  
CIÊNCIA, TECNOLOGIA  
E INOVAÇÃO

MINISTÉRIO DA  
AGRICULTURA E  
PECUÁRIA

GOVERNO FEDERAL  
**BRASIL**  
UNIÃO E RECONSTRUÇÃO



# Anomalias Temp sup Mar

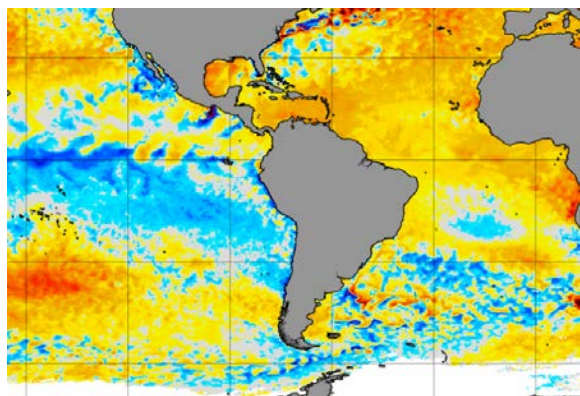
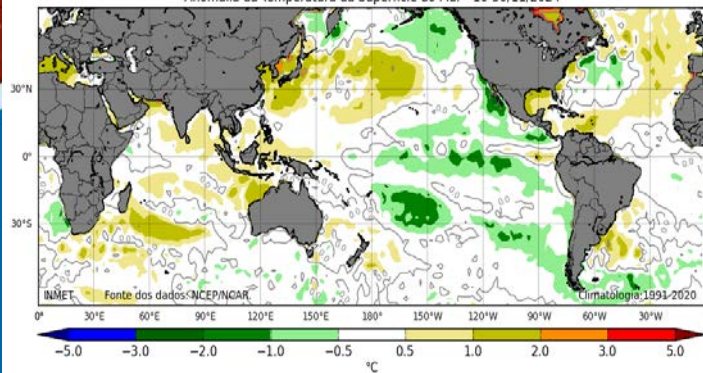


MINISTÉRIO DA  
CIÊNCIA, TECNOLOGIA  
E INOVAÇÃO

MINISTÉRIO DA  
AGRICULTURA E  
PECUÁRIA

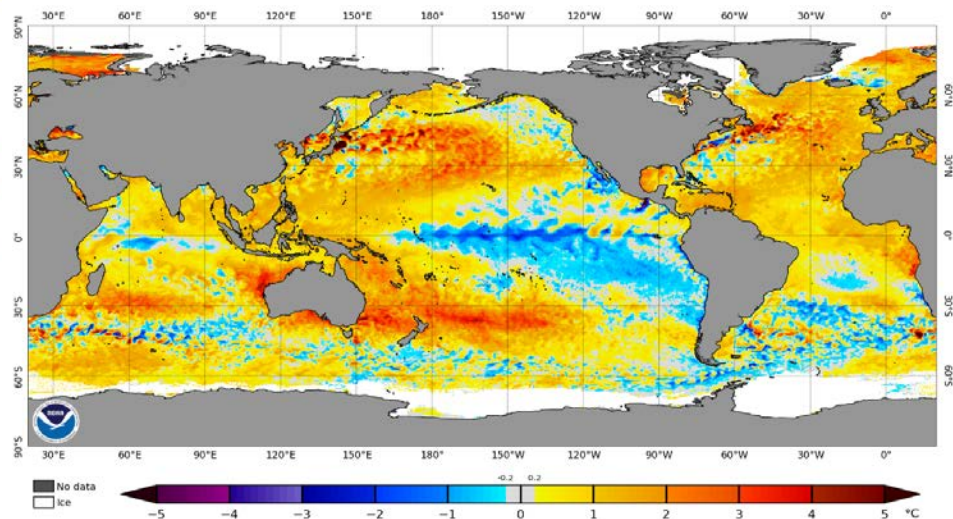
GOVERNO FEDERAL  
**BRASIL**  
UNIÃO E RECONSTRUÇÃO

Anomalia da Temperatura da Superfície do Mar - 16-30/11/2024

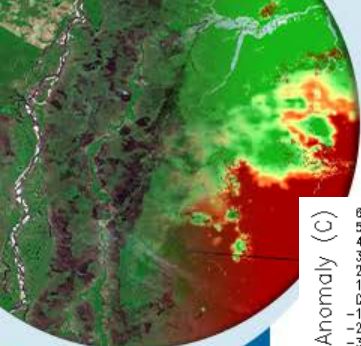


## Current Operational SST Anomaly Charts

NOAA Coral Reef Watch Daily 5km SST Anomalies (v3.1) 15 Dec 2024

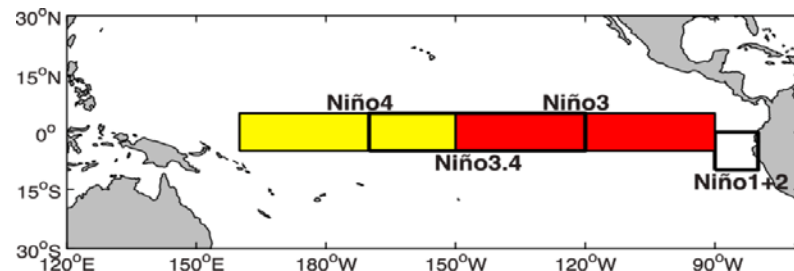
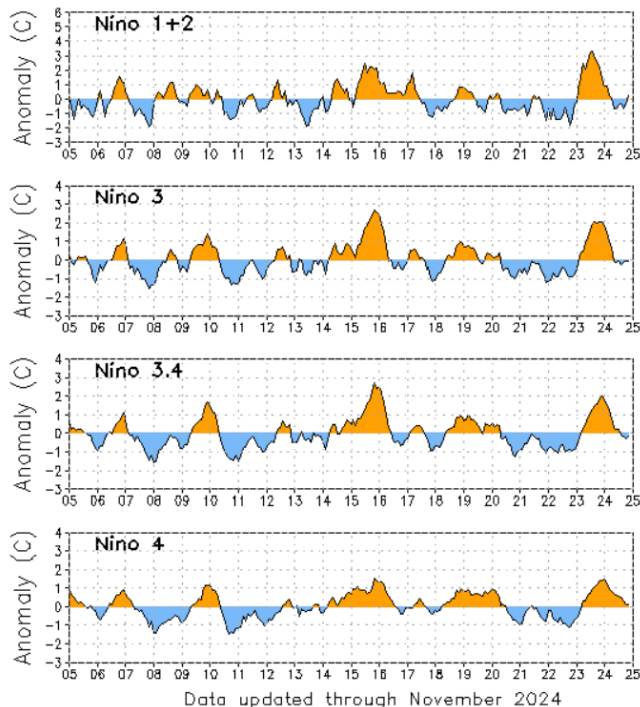


# Oceano Pacífico - Condição da TSM



MINISTÉRIO DA  
CIÊNCIA, TECNOLOGIA  
E INOVAÇÃO

MINISTÉRIO DA  
AGRICULTURA E  
PECUÁRIA



Week	Niño1+2 SST SSTA		Niño3 SST SSTA		Niño3.4 SST SSTA		Niño4 SST SSTA	
31JUL2024	20.9	-0.4	25.2	-0.3	26.8	-0.2	29.0	0.3
07AUG2024	20.9	-0.2	25.2	-0.0	27.0	0.0	29.1	0.4
14AUG2024	21.0	0.0	24.9	-0.3	26.8	-0.1	29.3	0.6
21AUG2024	20.6	-0.3	24.8	-0.2	26.7	-0.0	29.2	0.5
28AUG2024	20.2	-0.5	24.4	-0.5	26.5	-0.2	29.1	0.4
04SEP2024	20.3	-0.4	24.7	-0.2	26.6	-0.1	28.8	0.2
11SEP2024	20.5	-0.2	24.7	-0.2	26.4	-0.2	28.8	0.1
18SEP2024	20.8	0.2	24.6	-0.3	26.2	-0.5	28.8	0.1
25SEP2024	19.9	-0.8	25.0	0.0	26.4	-0.2	28.9	0.3
02OCT2024	20.3	-0.5	25.0	0.1	26.4	-0.3	28.9	0.3
09OCT2024	20.4	-0.4	24.8	-0.1	26.2	-0.5	28.7	0.1
16OCT2024	20.9	-0.1	24.9	-0.1	26.4	-0.3	28.7	0.1
23OCT2024	20.9	-0.2	24.9	-0.2	26.3	-0.5	28.6	-0.1
30OCT2024	20.8	-0.5	24.8	-0.2	26.6	-0.2	28.9	0.2
06NOV2024	21.3	-0.2	25.0	-0.1	26.4	-0.3	28.8	0.2
13NOV2024	21.9	0.2	25.1	0.0	26.8	0.0	28.9	0.2
20NOV2024	22.7	0.8	25.2	0.1	26.7	-0.1	28.8	0.1
27NOV2024	22.5	0.3	24.9	-0.2	26.4	-0.3	28.5	-0.1
04DEC2024	22.5	0.1	24.8	-0.4	26.3	-0.3	28.3	-0.2
11DEC2024	22.5	-0.2	24.8	-0.4	26.1	-0.6	28.1	-0.3



# OSCILAÇÃO, MADDEN JULIAN

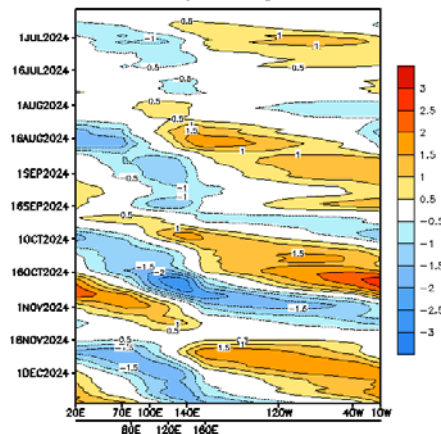
## OSCILAÇÃO SUL

Recent (preliminary) Southern Oscillation Index values

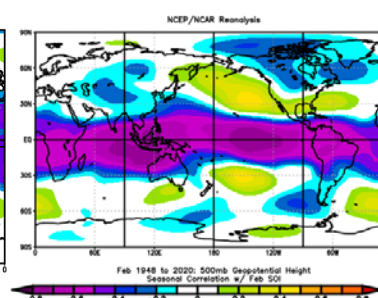
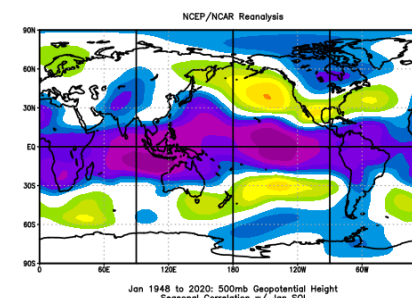
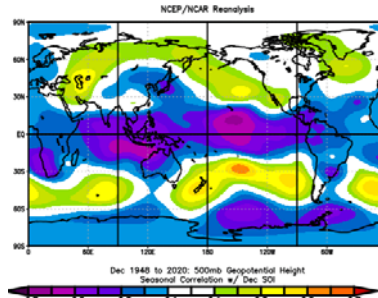
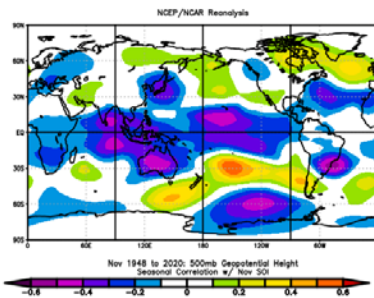


## OSCILAÇÃO DE MADEN-JULIAN

5 -day Running Mean



Data updated through 17 Dec 2024

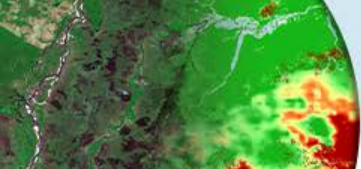


MINISTÉRIO DA  
CIÊNCIA, TECNOLOGIA  
E INOVAÇÃO

MINISTÉRIO DA  
AGRICULTURA E  
PECUÁRIA

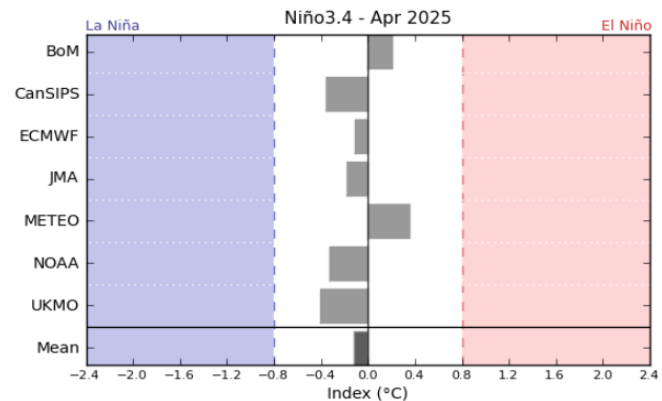
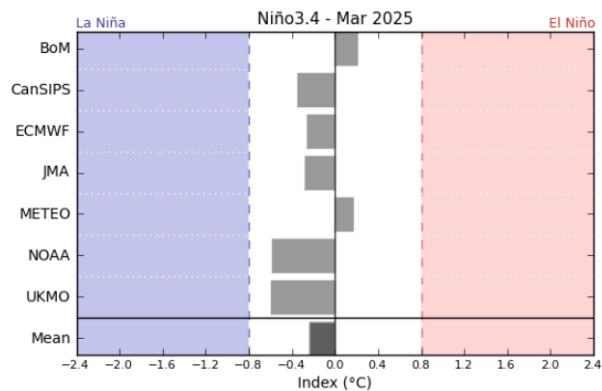
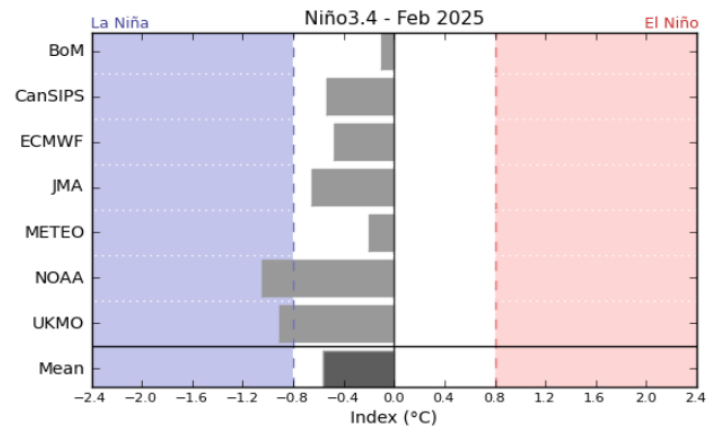
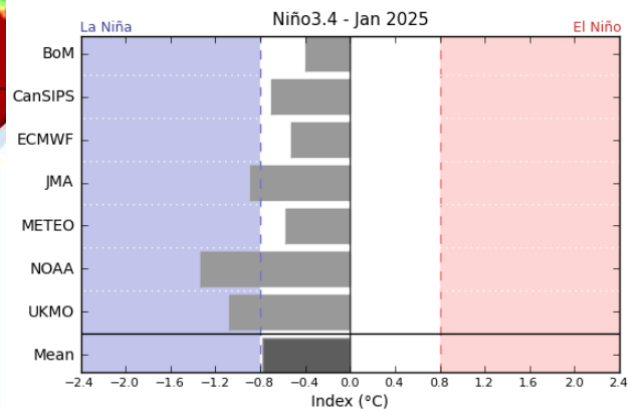
GOVERNO FEDERAL  
**BRASIL**  
UNIÃO E RECONSTRUÇÃO

# CFS NOAA TSM PRÓXIMOS MESES JAN / ABRIL 2025

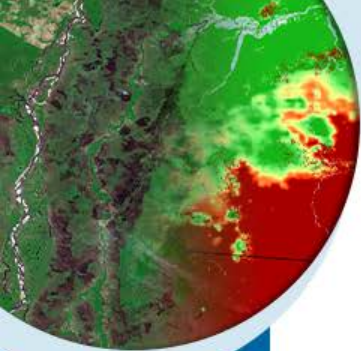


MINISTÉRIO DA  
CIÊNCIA, TECNOLOGIA  
E INOVAÇÃO

MINISTÉRIO DA  
AGRICULTURA E  
PECUÁRIA



# PREVISÕES TSM 3.4

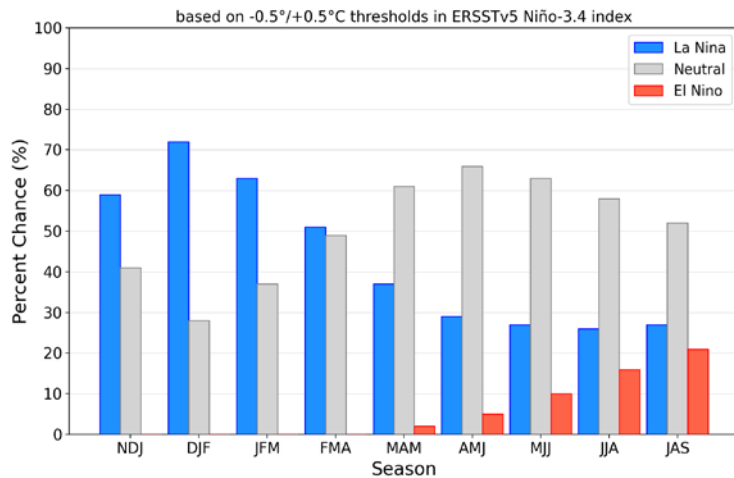


MINISTÉRIO DA  
CIÊNCIA, TECNOLOGIA  
E INOVAÇÃO

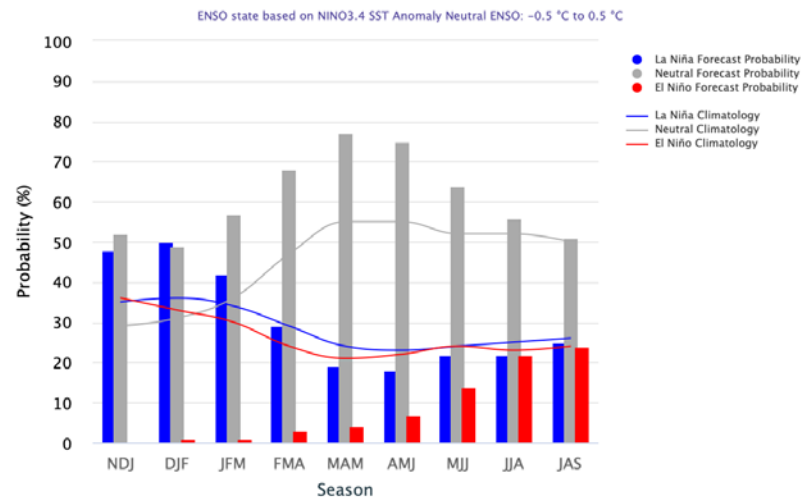
MINISTÉRIO DA  
AGRICULTURA E  
PECUÁRIA



## Official NOAA CPC ENSO Probabilities (issued December 2024)



## Mid-November 2024 IRI Model-Based Probabilistic ENSO Forecasts





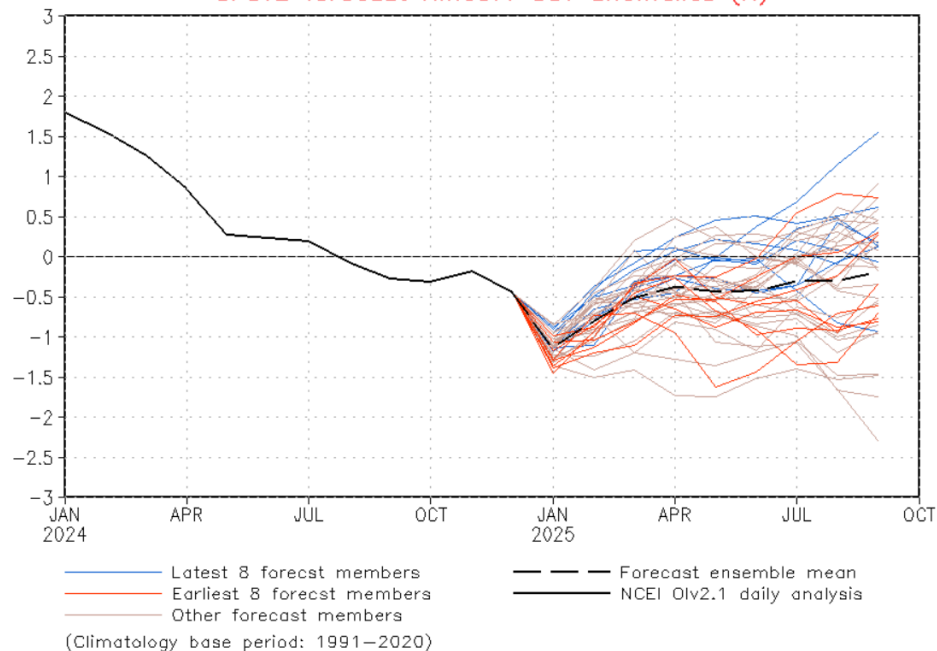
# PREVISÕES TSM 3.4



NWS/NCEP/CPC

Last update: Mon Dec 16 2024  
Initial conditions: 6Dec2024–15Dec2024

CFSv2 forecast Nino3.4 SST anomalies (K)

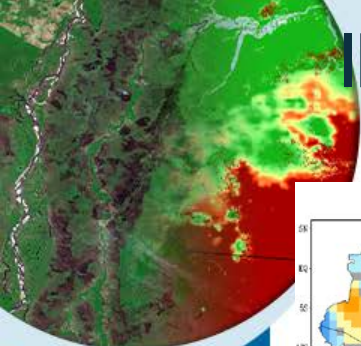


MINISTÉRIO DA  
CIÊNCIA, TECNOLOGIA  
E INOVAÇÃO

MINISTÉRIO DA  
AGRICULTURA E  
PECUÁRIA

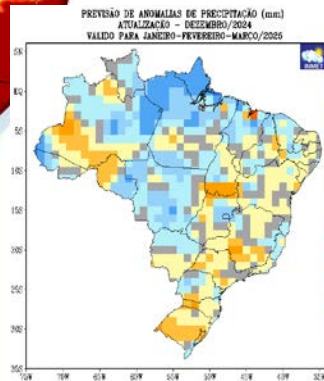
GOVERNO FEDERAL  
**BRASIL**  
UNIÃO E RECONSTRUÇÃO

# INMET PROGNÓSTICO CLIMÁTICO Jan/MAR 2025

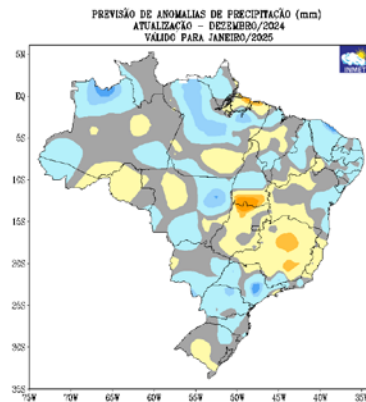


MINISTÉRIO DA  
CIÊNCIA, TECNOLOGIA  
E INOVAÇÃO

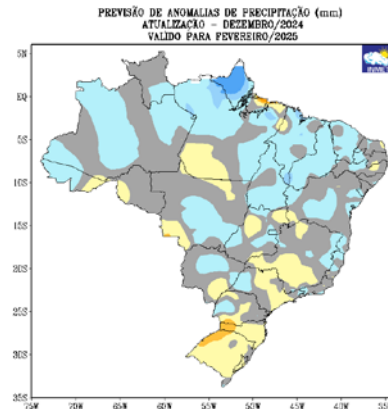
MINISTÉRIO DA  
AGRICULTURA E  
PECUÁRIA



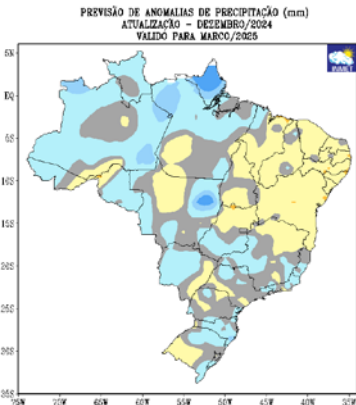
JFM 2025



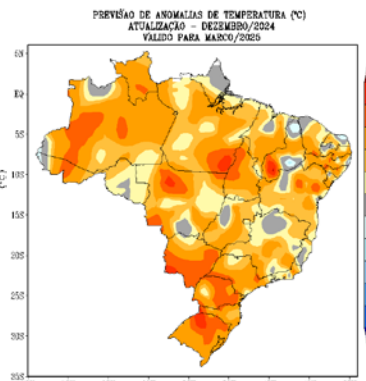
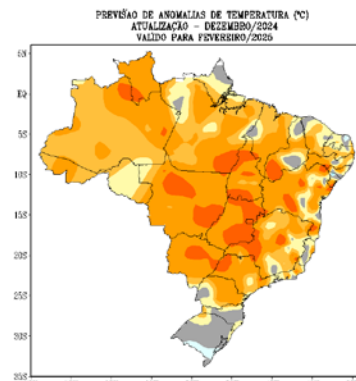
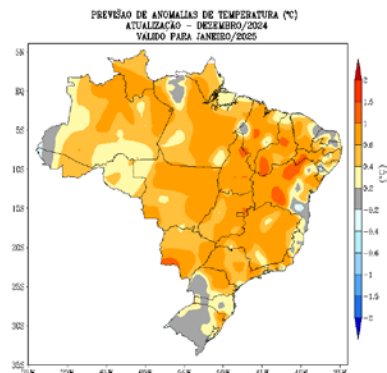
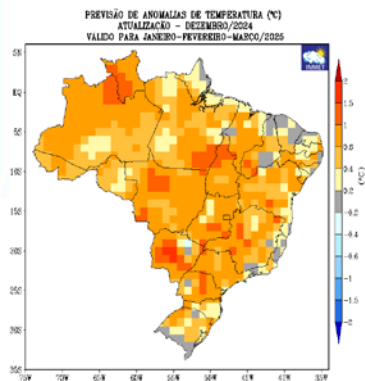
JANEIRO



FEVEREIRO

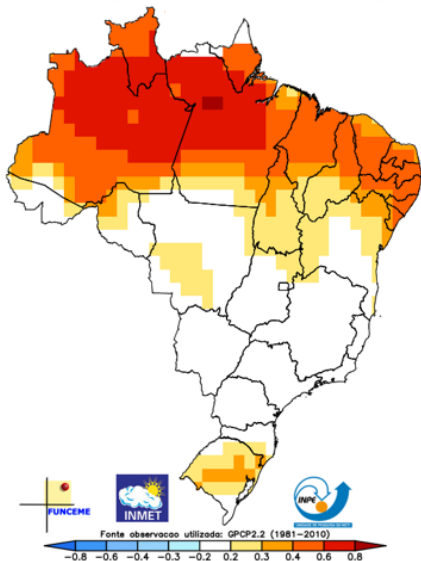


MARÇO

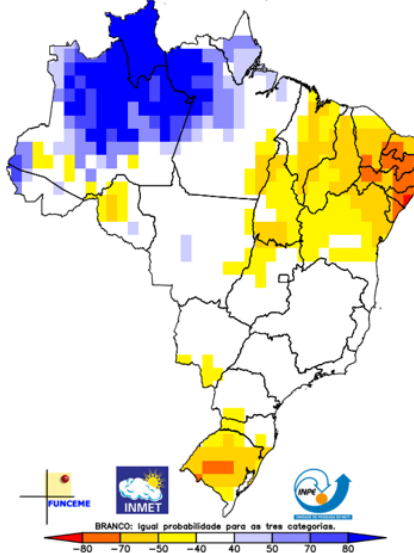


# MULTIMODEL

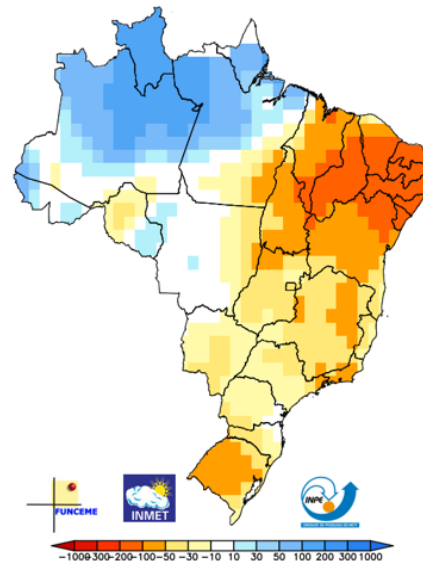
Correlação de Anomalia de Precipitação JFM  
média [CPTEC1.2+INMET+FUNCEME]



Multi-modelo CPTEC/INMET/FUNCEME  
Probab. tercil mais provável: Precip. (%)  
Produzida: Dez 2024 Valida para JFM 2025



Previsão de Anomalia de Precipitação JFM/2025  
média [CPTEC1.2+INMET+FUNCEME]

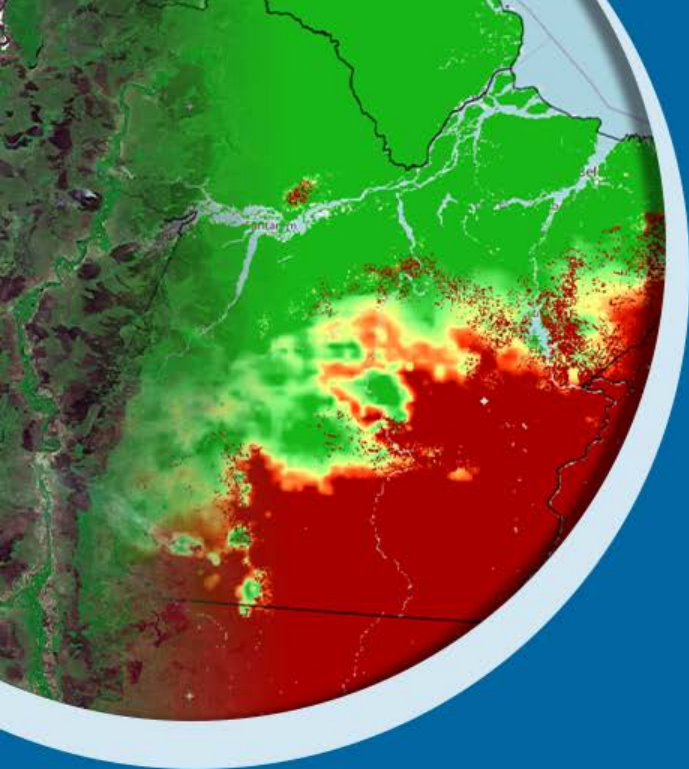


MINISTÉRIO DA  
CIÊNCIA, TECNOLOGIA  
E INOVAÇÃO

MINISTÉRIO DA  
AGRICULTURA E  
PECUÁRIA

GOVERNO FEDERAL  
**BRASIL**  
UNIÃO E RECONSTRUÇÃO





# Obrigado pela atenção!

[marcelo.schneider@inmet.gov.br](mailto:marcelo.schneider@inmet.gov.br)



@inmet.official



@inmet\_

[portal.inmet.gov.br](http://portal.inmet.gov.br)

MINISTÉRIO DA  
CIÊNCIA, TECNOLOGIA  
E INOVAÇÃO

MINISTÉRIO DA  
AGRICULTURA E  
PECUÁRIA

GOVERNO FEDERAL  
**BRASIL**  
UNIÃO E RECONSTRUÇÃO