

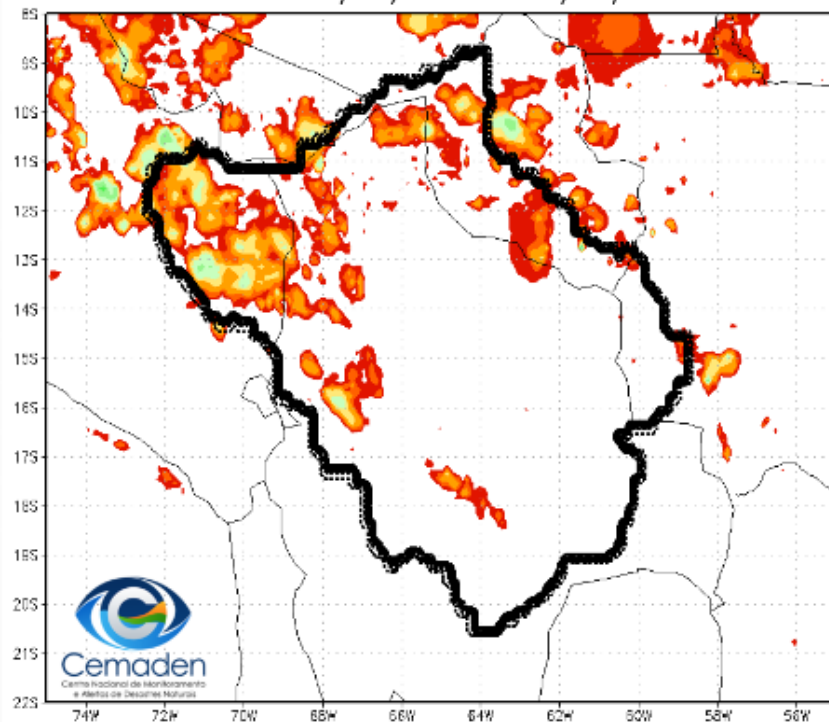
# Diagnóstico e Previsões Meteorológicas e Hidrológicas para a Bacia do Rio Madeira



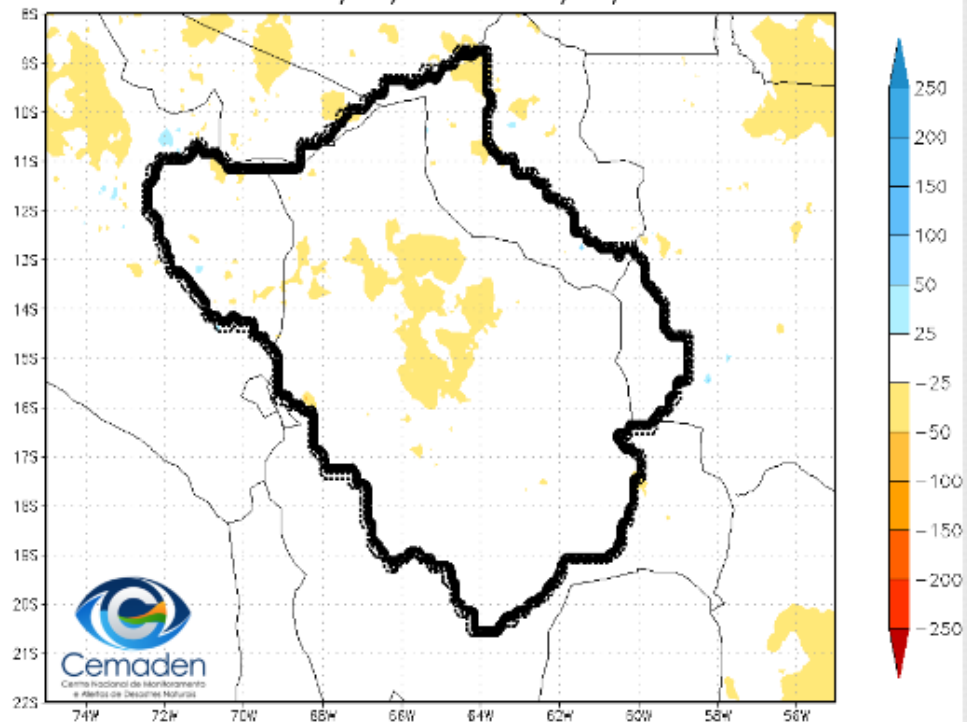
14 de Setembro de 2022

## Precipitação Acumulada no mês de Setembro

Precipitação Acumulada (mm)  
Período: 01/09/2022 – 13/09/2022



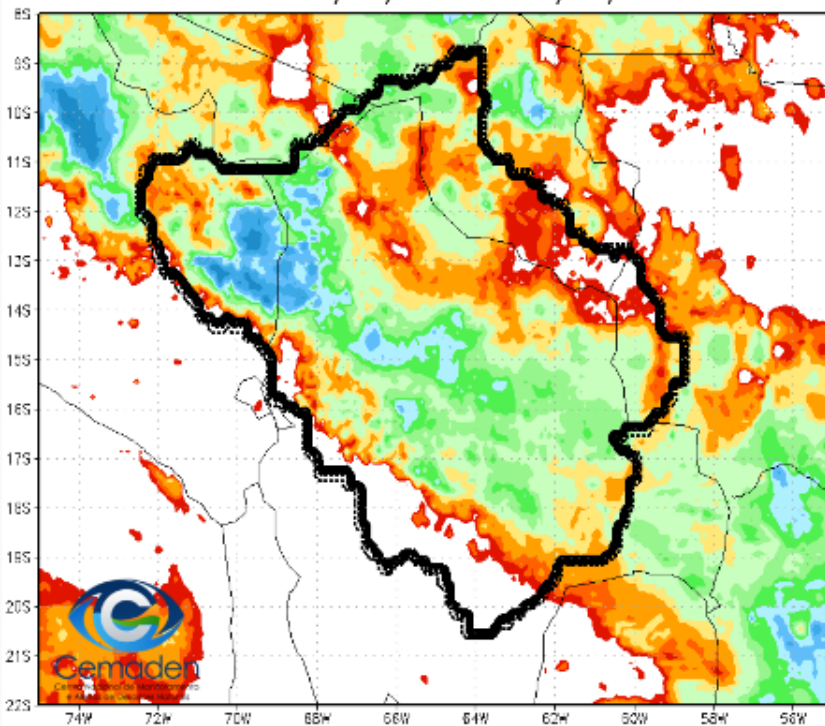
Anomalia de Precipitação Média (mm)  
Período: 01/09/2022 – 13/09/2022



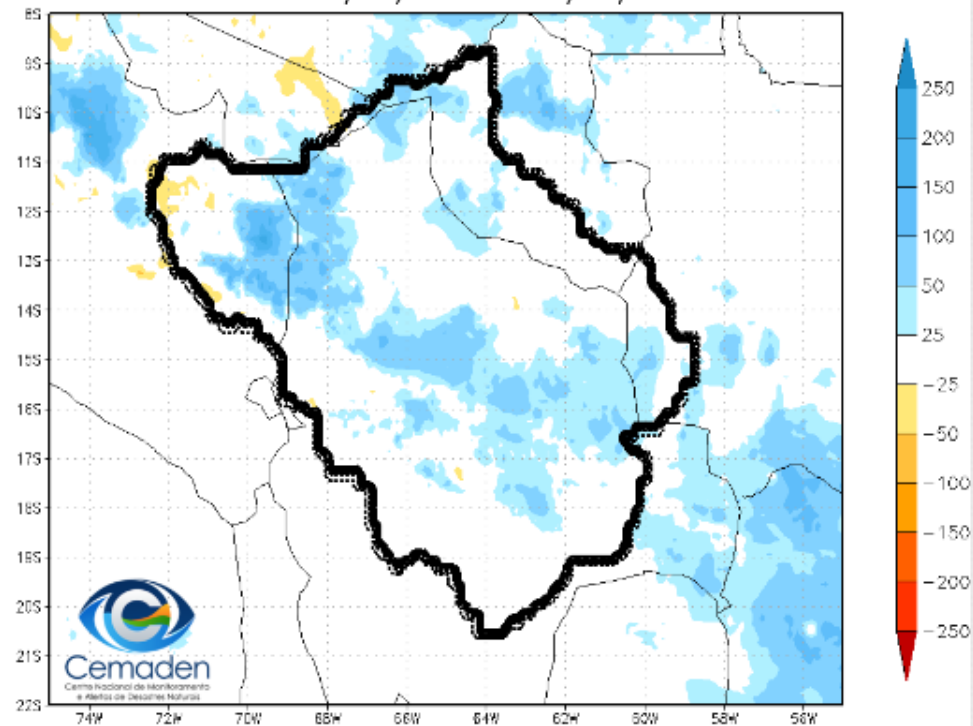
Fonte dos dados: CPTEC/INPE

## Precipitação Acumulada em Agosto

Precipitação Acumulada (mm)  
Período: 01/08/2022 – 31/08/2022

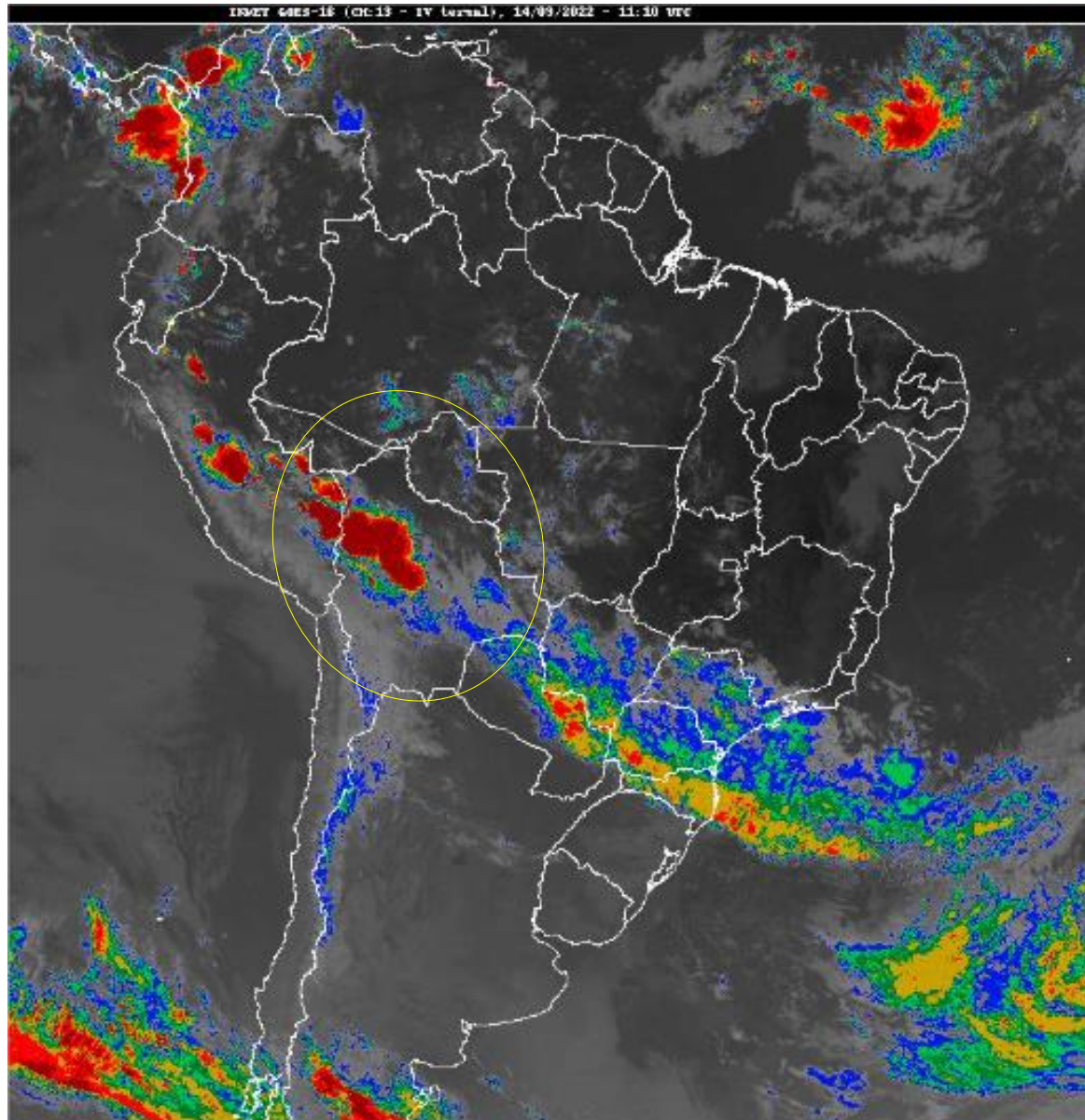


Anomalia de Precipitação Média (mm)  
Período: 01/08/2022 – 31/08/2022



Fonte dos dados: CPTEC/INPE

# Situação meteorológica atual

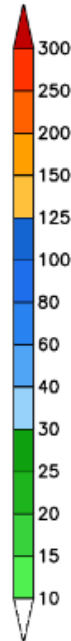
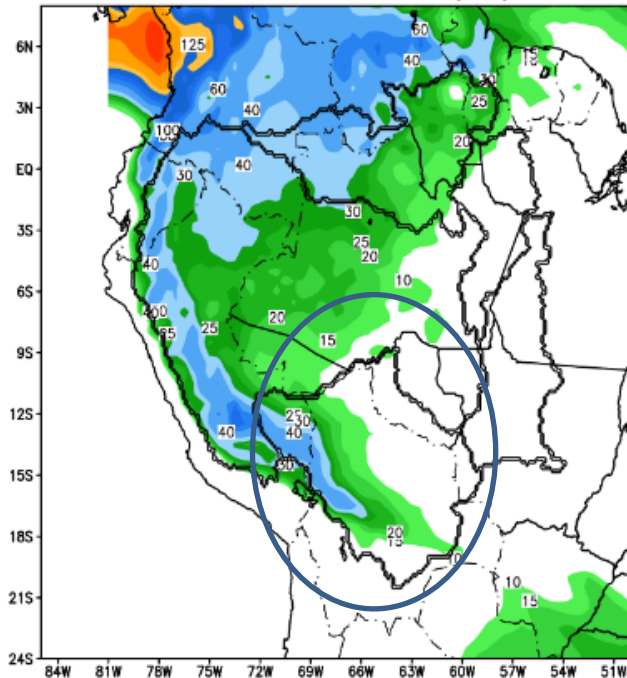


Fonte: INMET

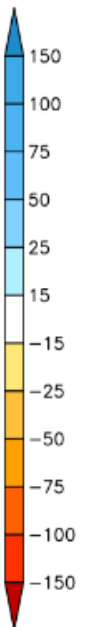
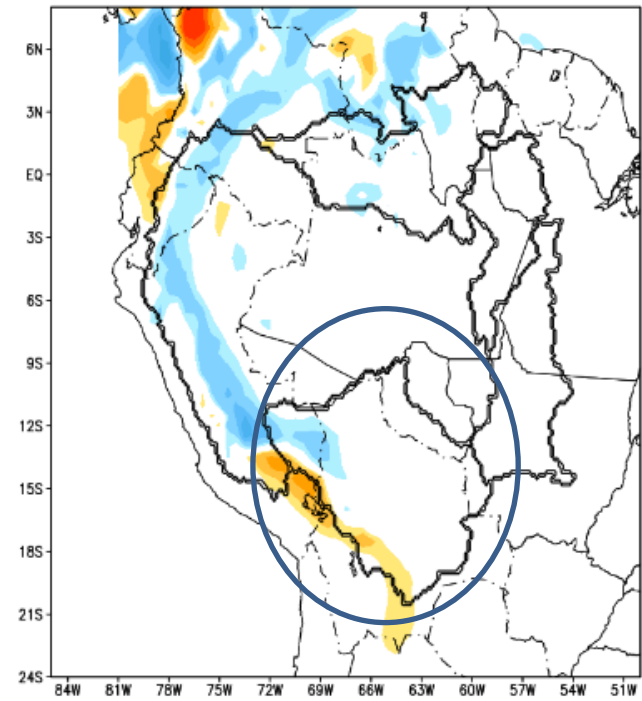


# Previsão de chuva para os próximos 7 dias

GEFS / BRASIL\_NORTE  
Precipitação acumulada 1aSem (mm)  
Previsão das 00Z dia 14/09/2022

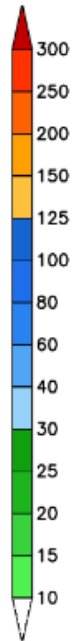
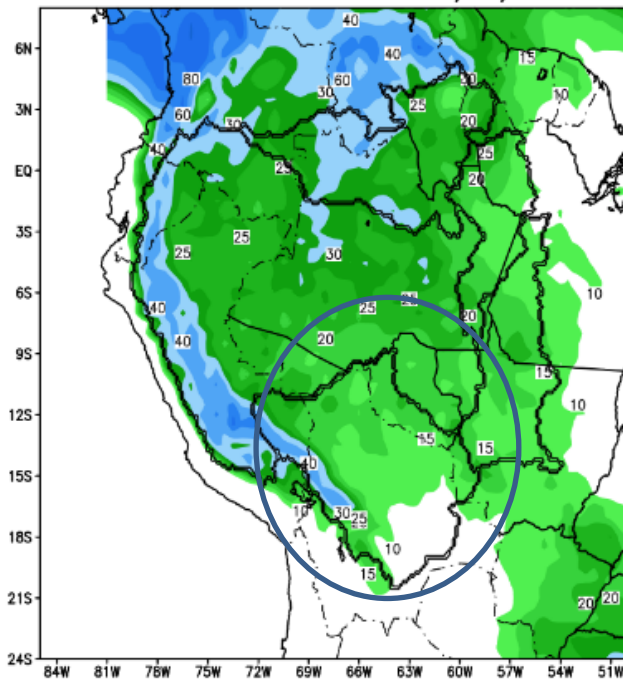


Anomalia de Precipitação BR\_NORTE (mm)  
Período: 2022091400 a 2022092100

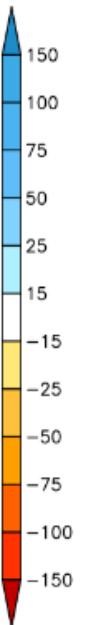
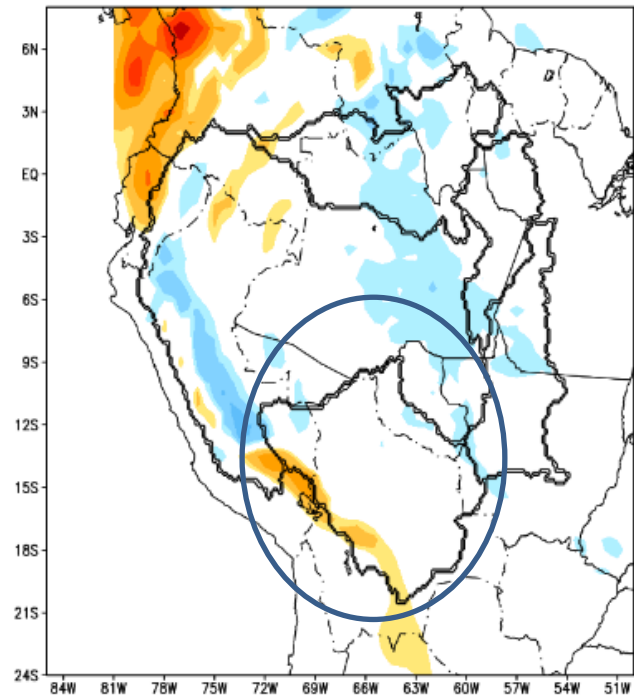


## Tendência para a Segunda Semana

GEFS / BRASIL\_NORTE  
Precipitacao acumulada 2aSem (mm)  
Previsao das 00Z dia 14/09/2022

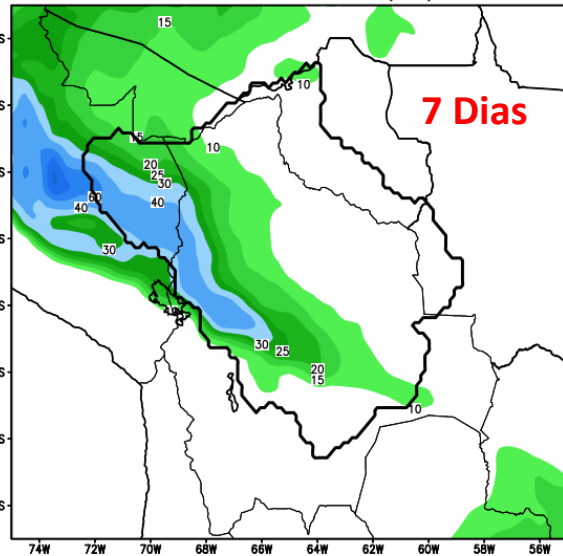


Anomalia de Precipitacao BR NORTE (mm)  
Periodo: 2022092200 a 2022092800

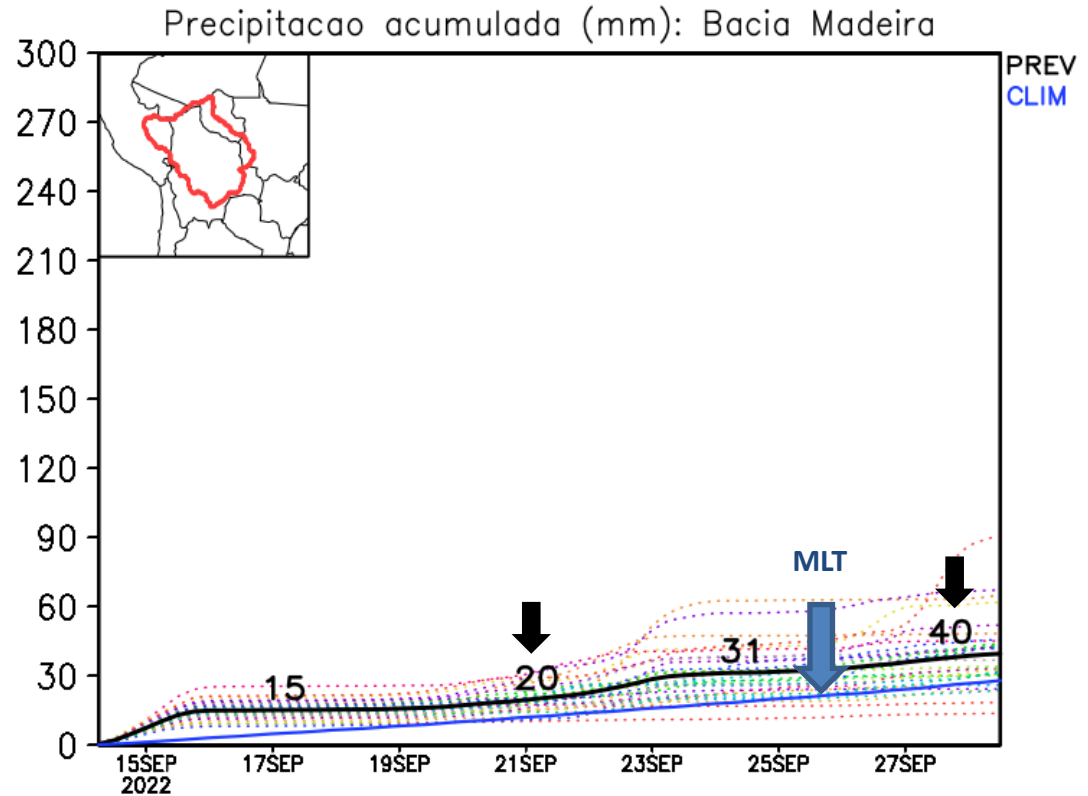
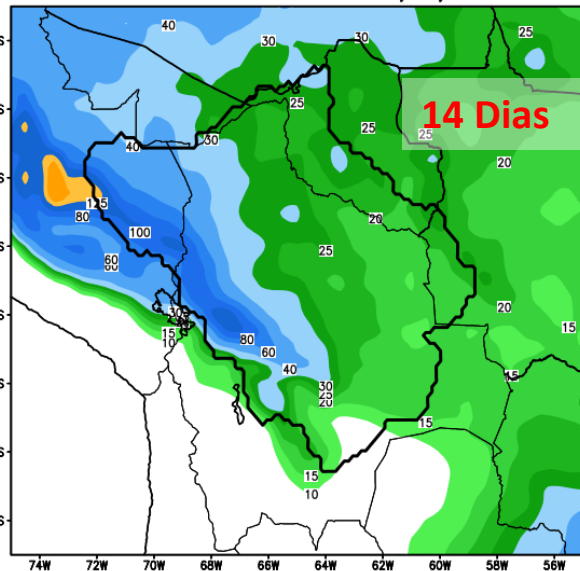


# Previsão de chuva para o Rio Madeira

GEFS / Bacia do Rio Madeira  
Precipitacao acumulada em 7 dias (mm)  
Previsao das 00Z dia 14/09/2022



GEFS / Bacia do Rio Madeira  
Precipitacao acumulada em 14 dias (mm)  
Previsao das 00Z dia 14/09/2022

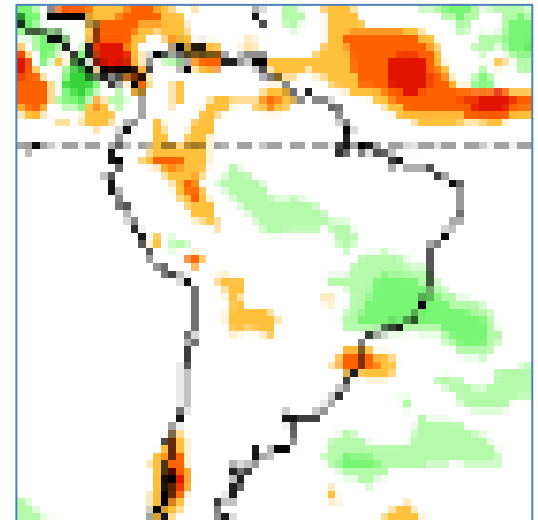
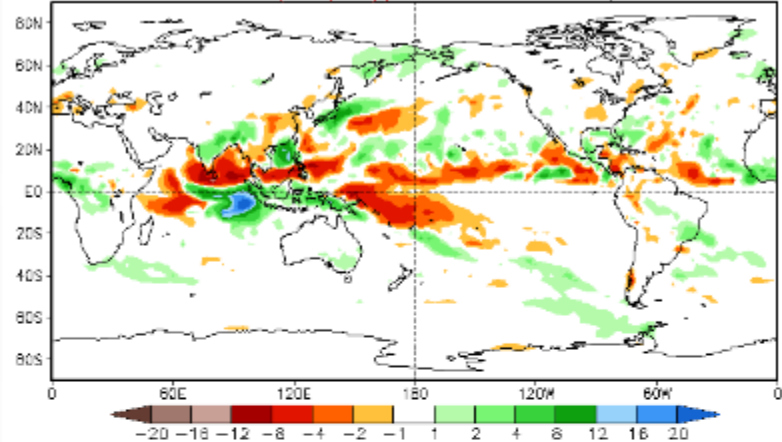


## Tendência 3a e 4a semanas

16 Member Ensemble Mean Forecast from 13Sep2022

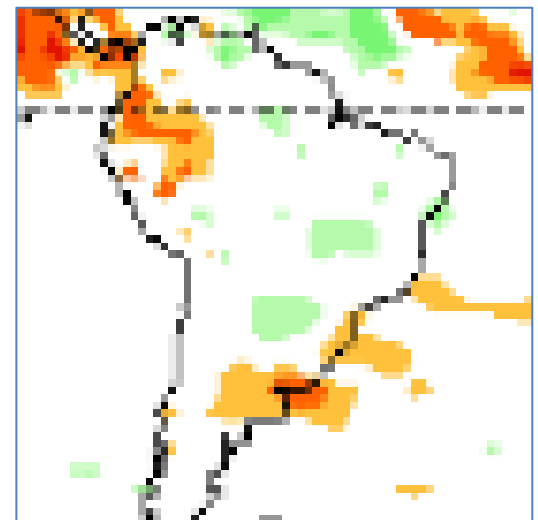
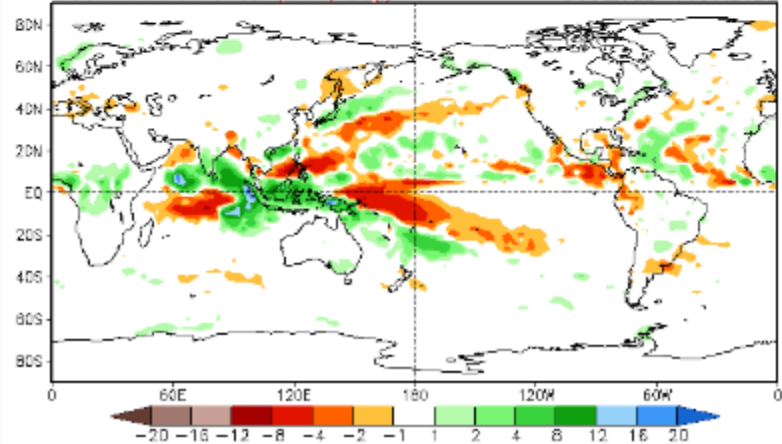
Week 3 Anomalies (mm/day)

28Sep2022-4Oct2022



Week 4 Anomalies (mm/day)

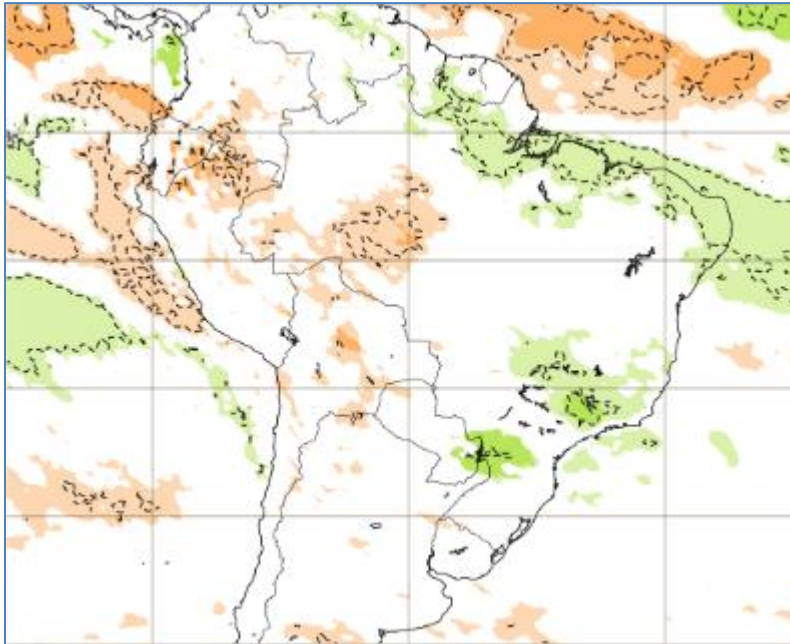
5Oct2022-11Oct2022



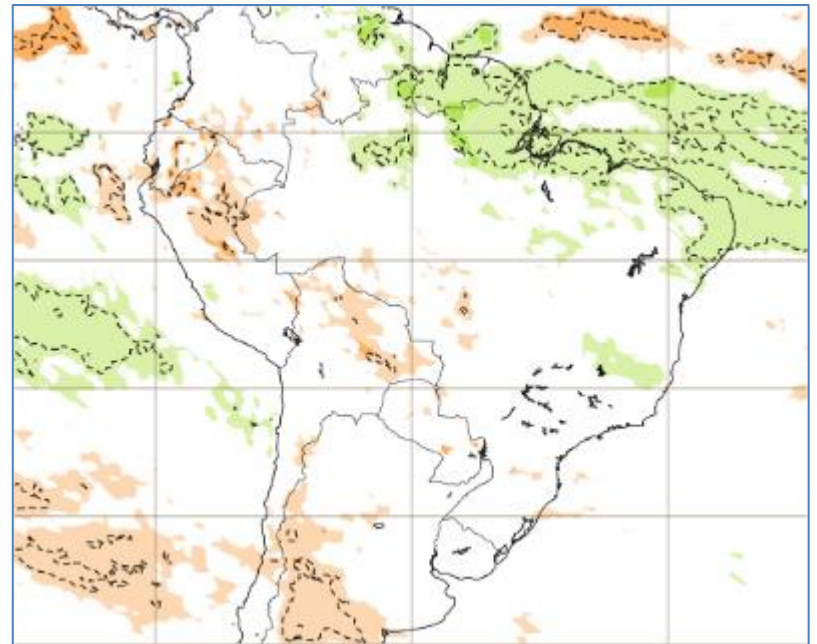


# Tendência para 3ª e 4ª semanas

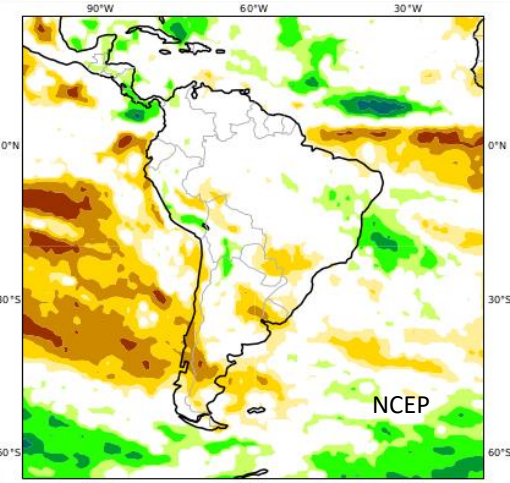
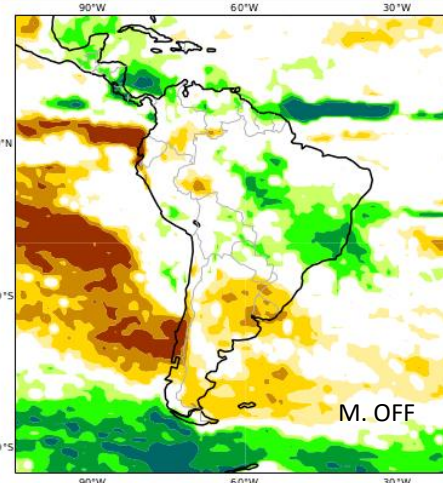
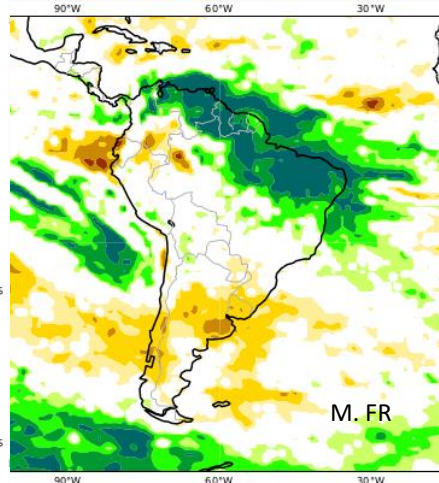
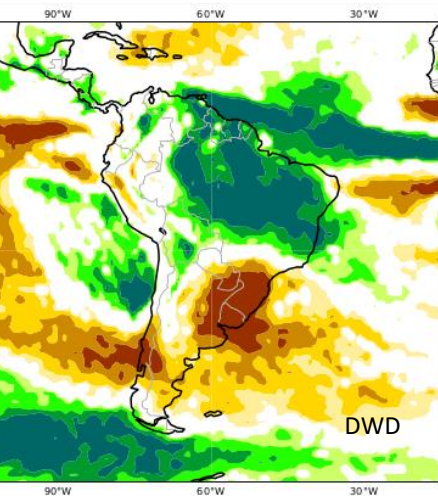
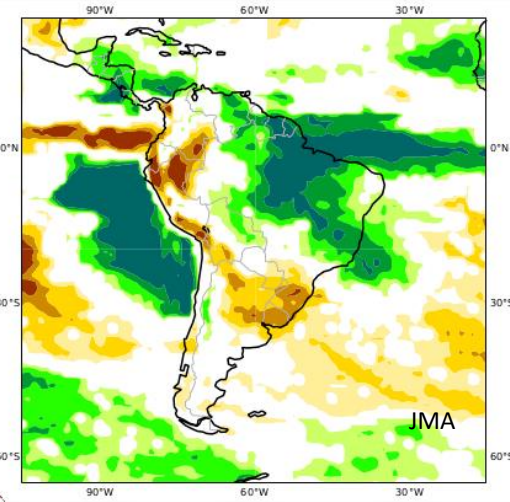
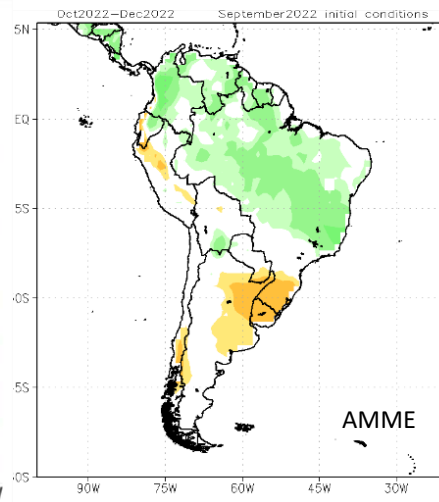
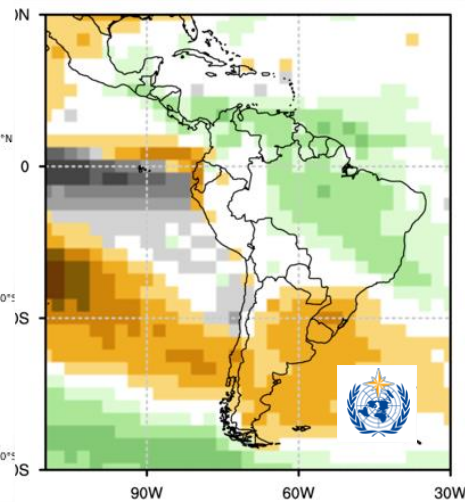
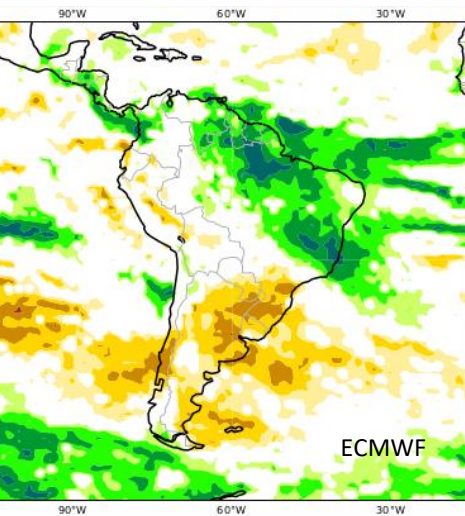
26/09-03/10



03/10-10/10

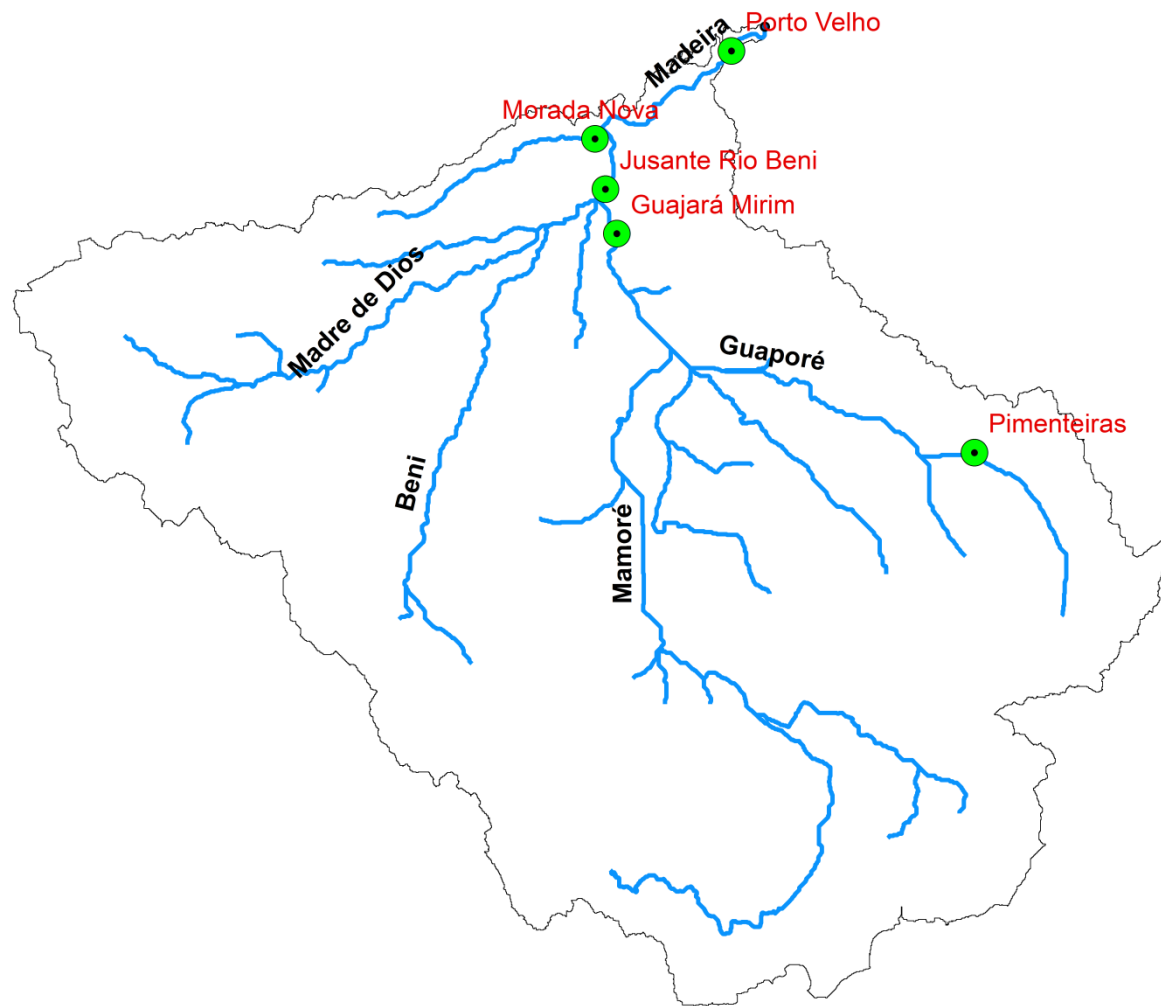


# Previsão sazonal de Chuva OND

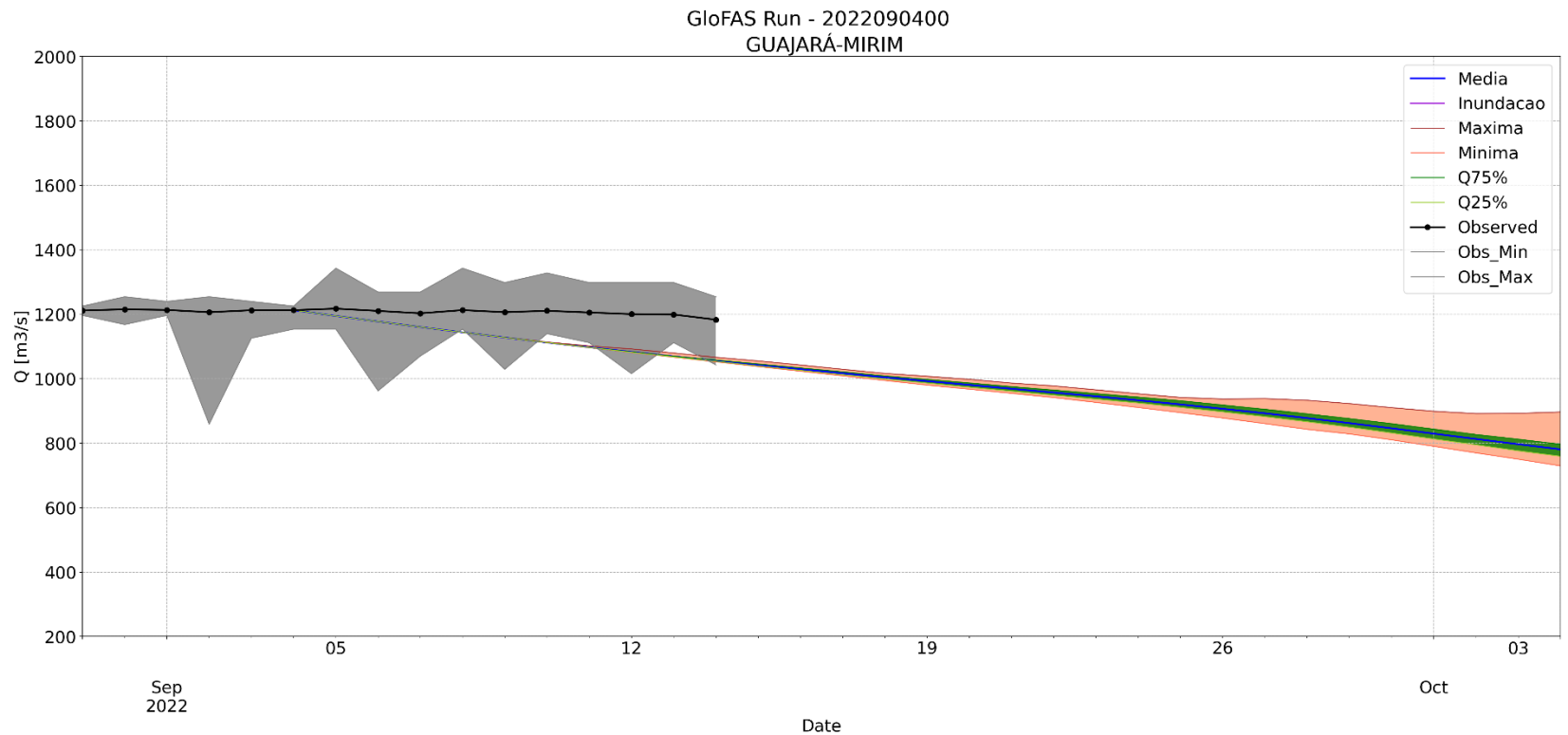


# *Previsão Hidrológica: Bacia do Rio Madeira*

Previsão de vazão realizada por meio do Modelo Hidrológico Distribuído – Lisflood/GLOFAS (Chuva-Vazão), usando como entradas as previsões de precipitação fornecidas pelo modelo por conjunto ECMWF (Centro Europeu)

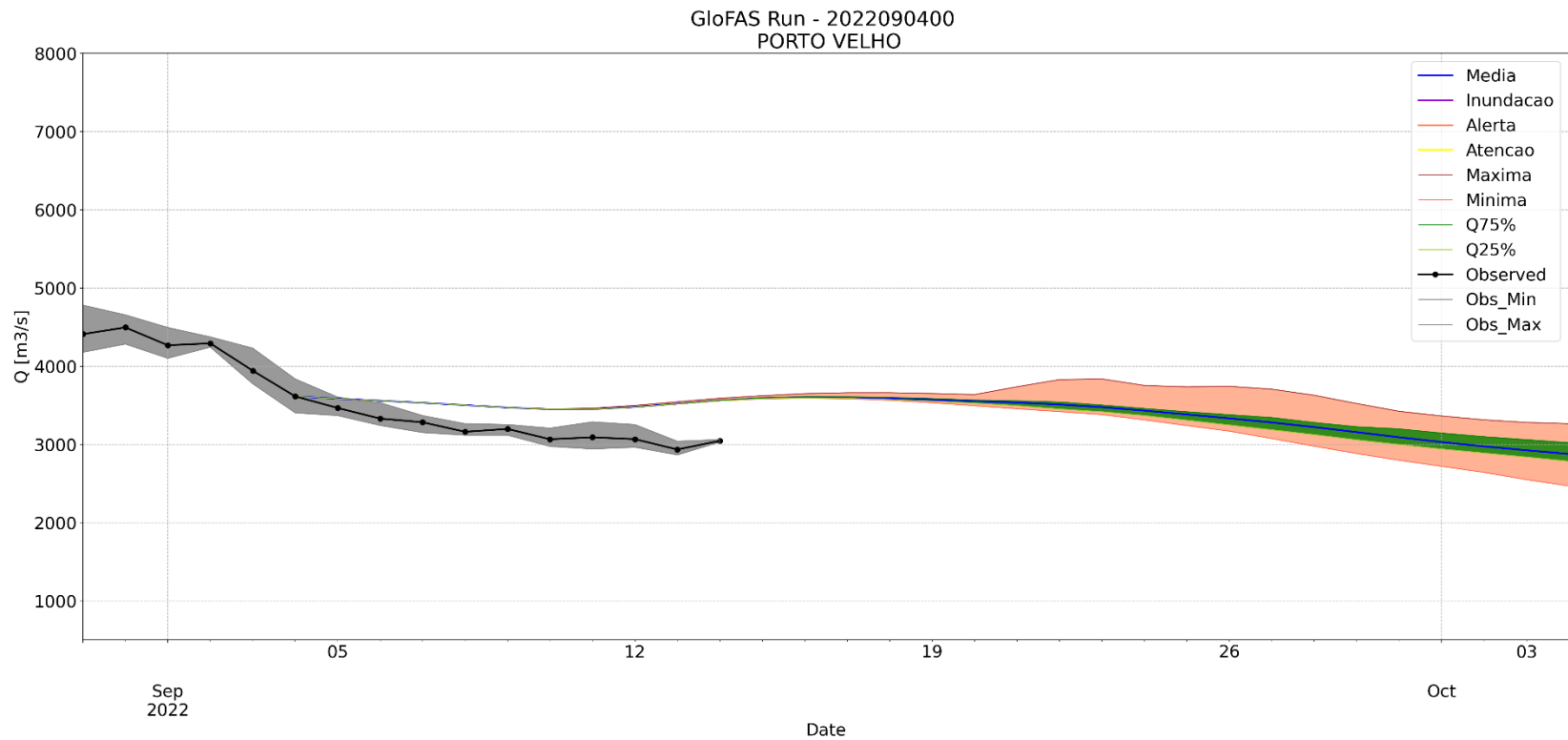


# Análise Previsão: 04/09/2022





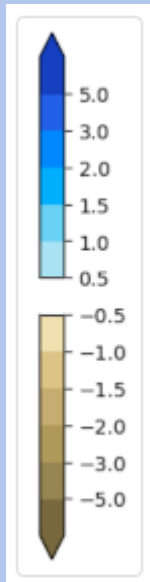
# Análise Previsão: 04/09/2022





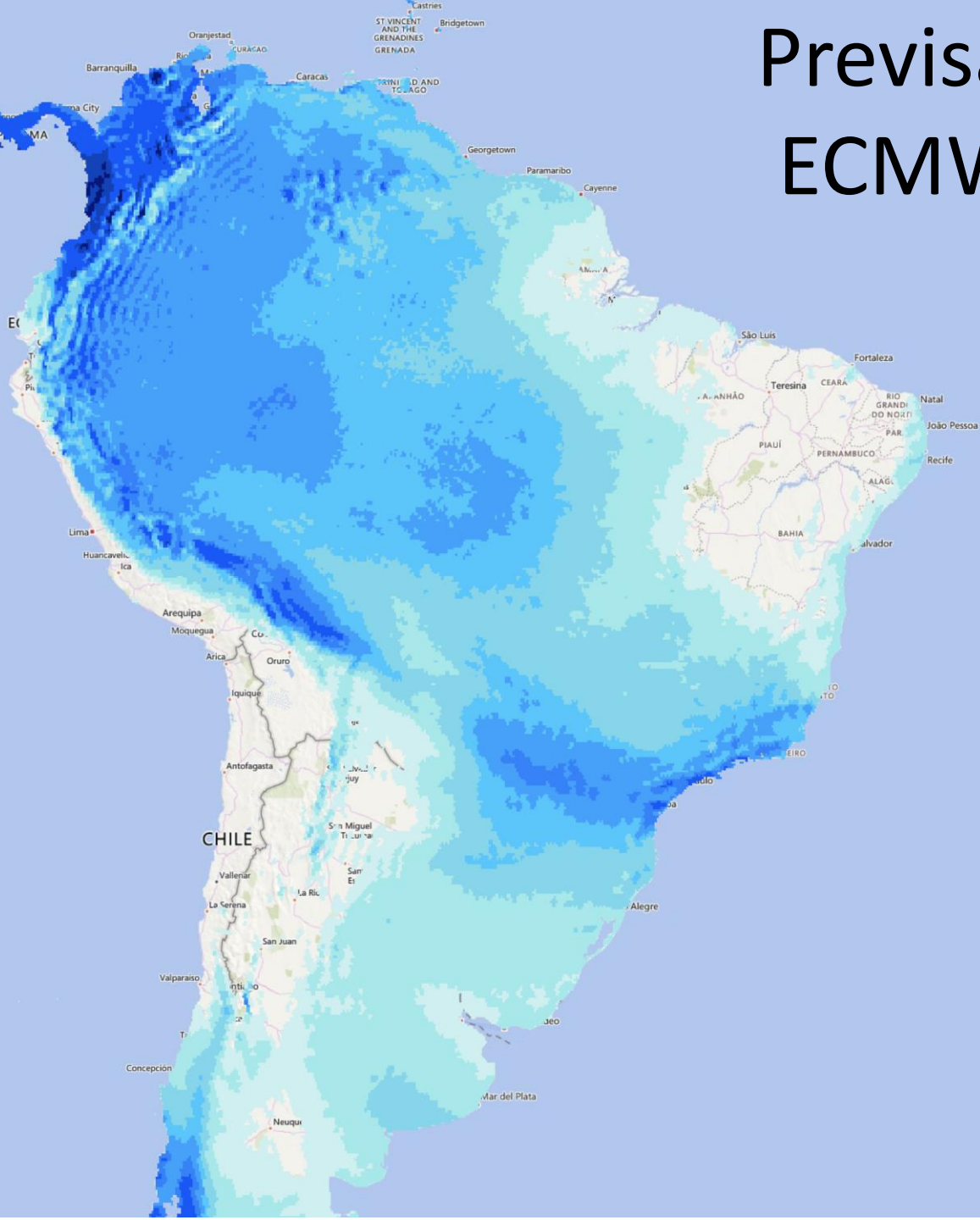
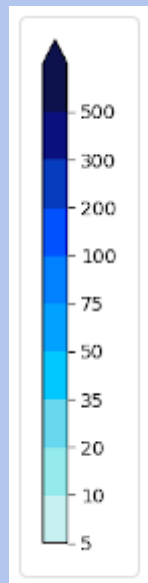
# Previsão: ECMWF

Anomalia chuva  
acumulada 3  
dias (ERA5)

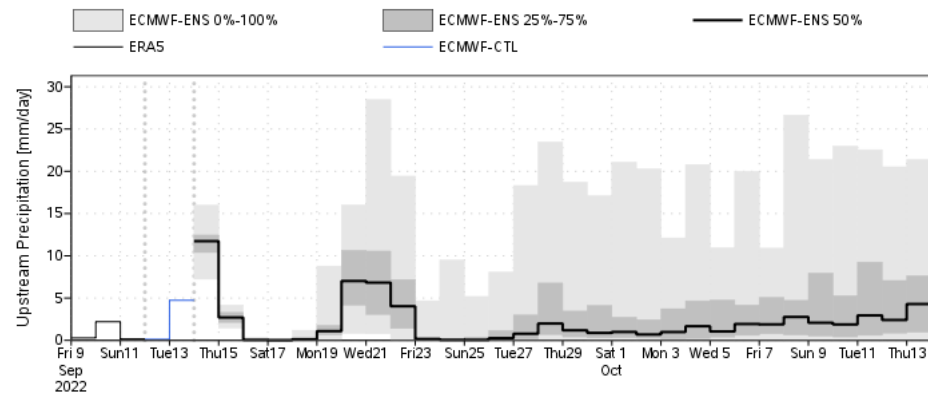
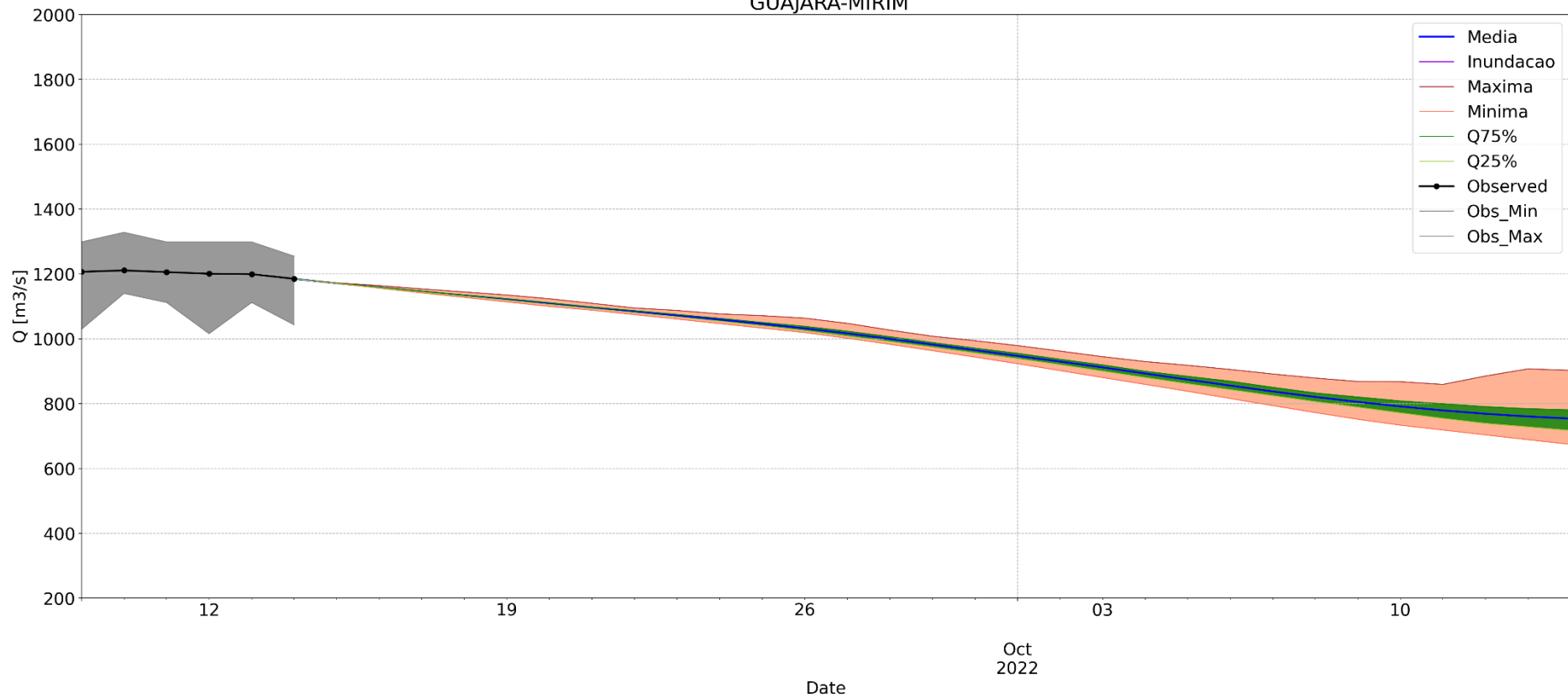


# Previsão: ECMWF

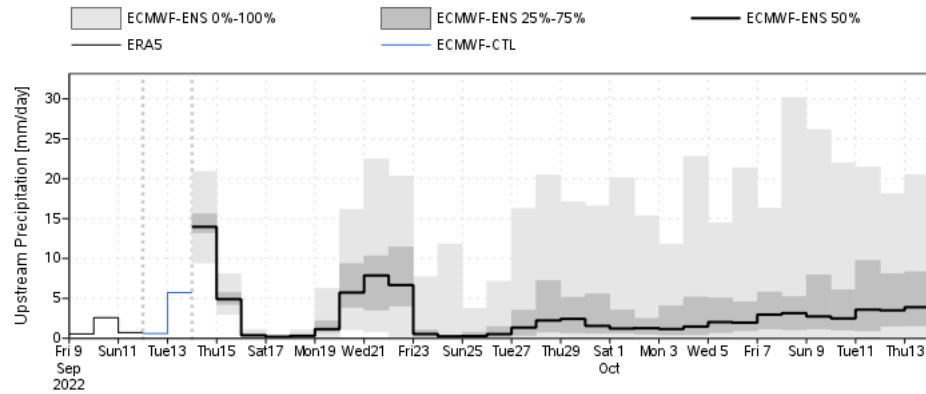
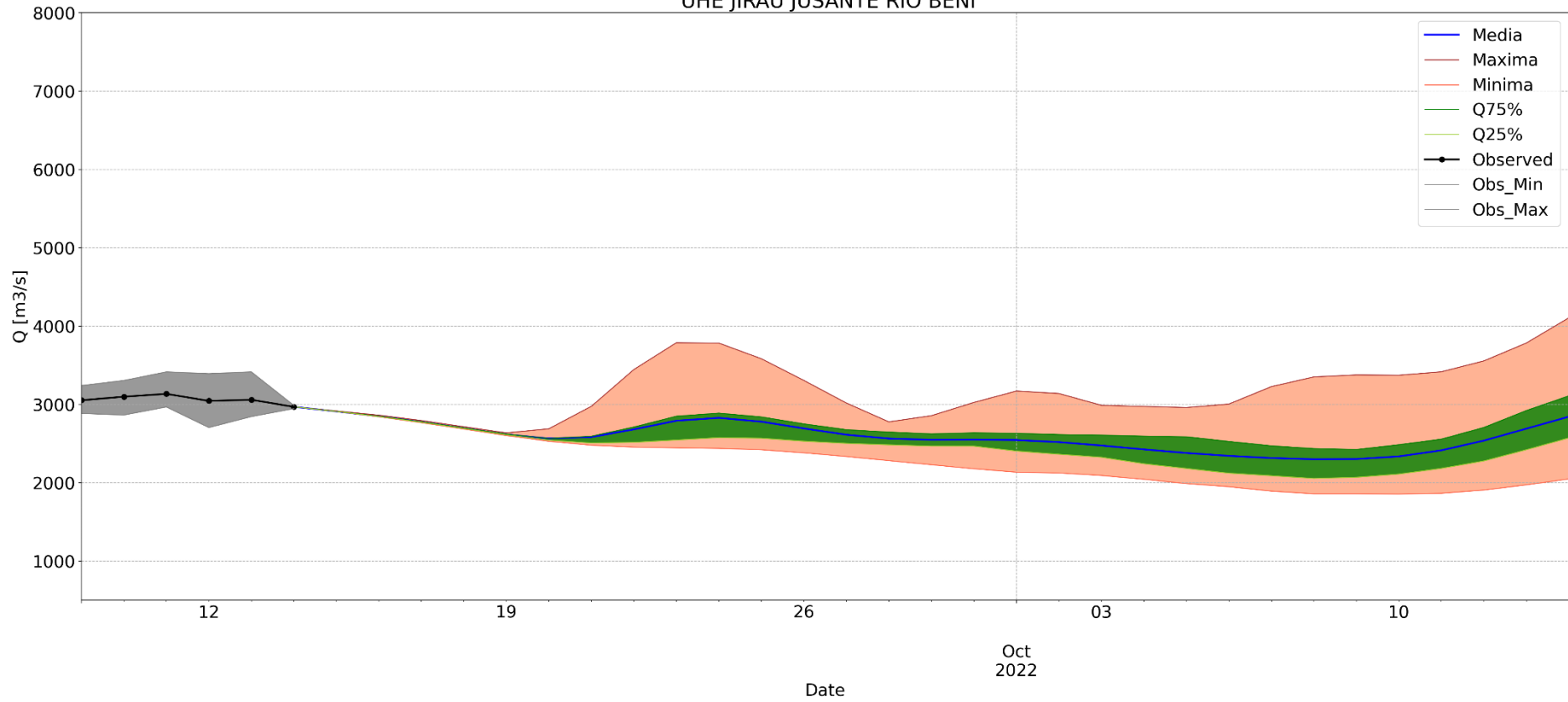
Acumulado  
para 10 dias



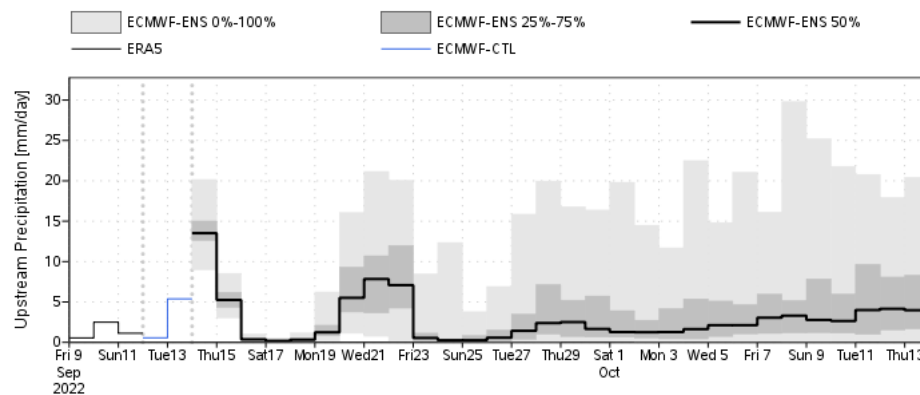
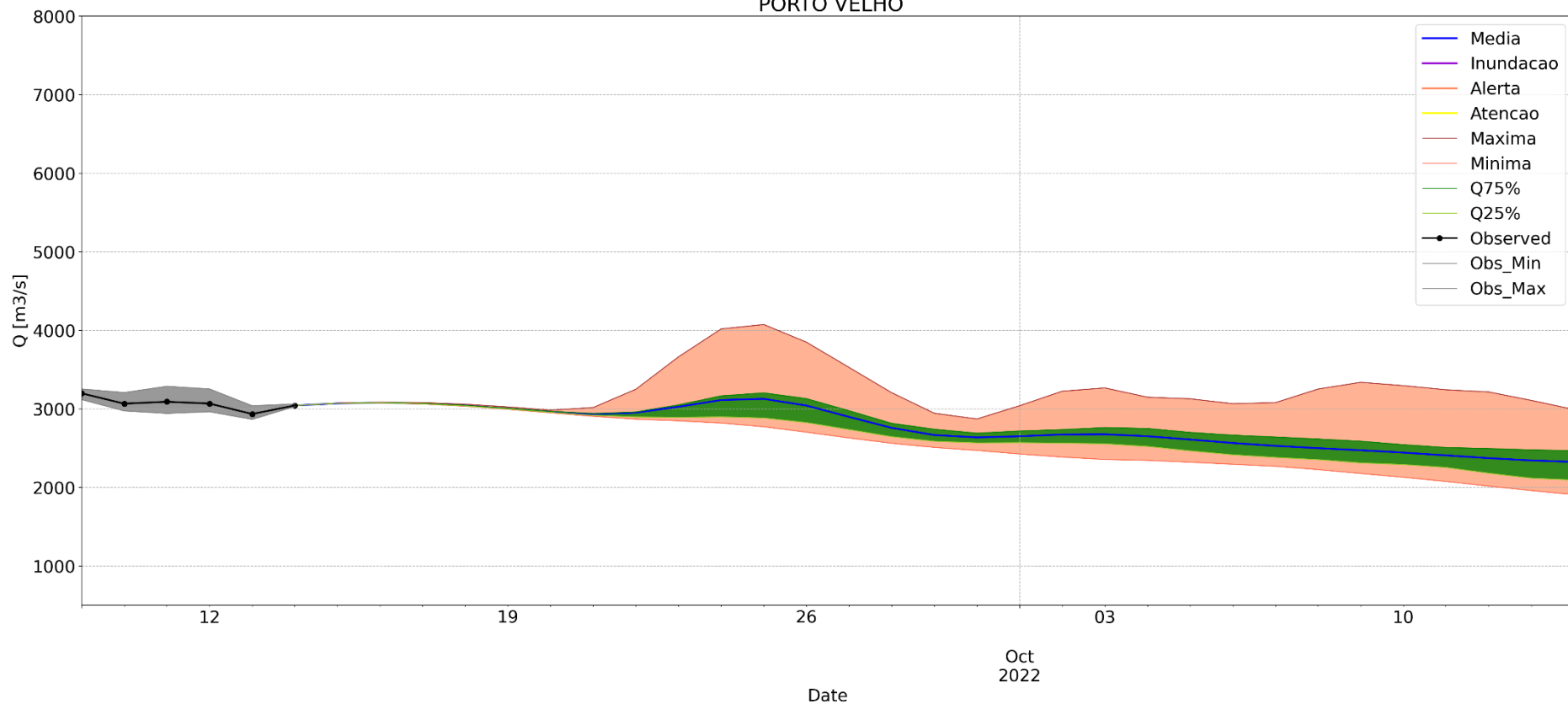
GloFAS Run - 2022091400  
GUAJARÁ-MIRIM



GloFAS Run - 2022091400  
UHE JIRAU JUSANTE RIO BENI

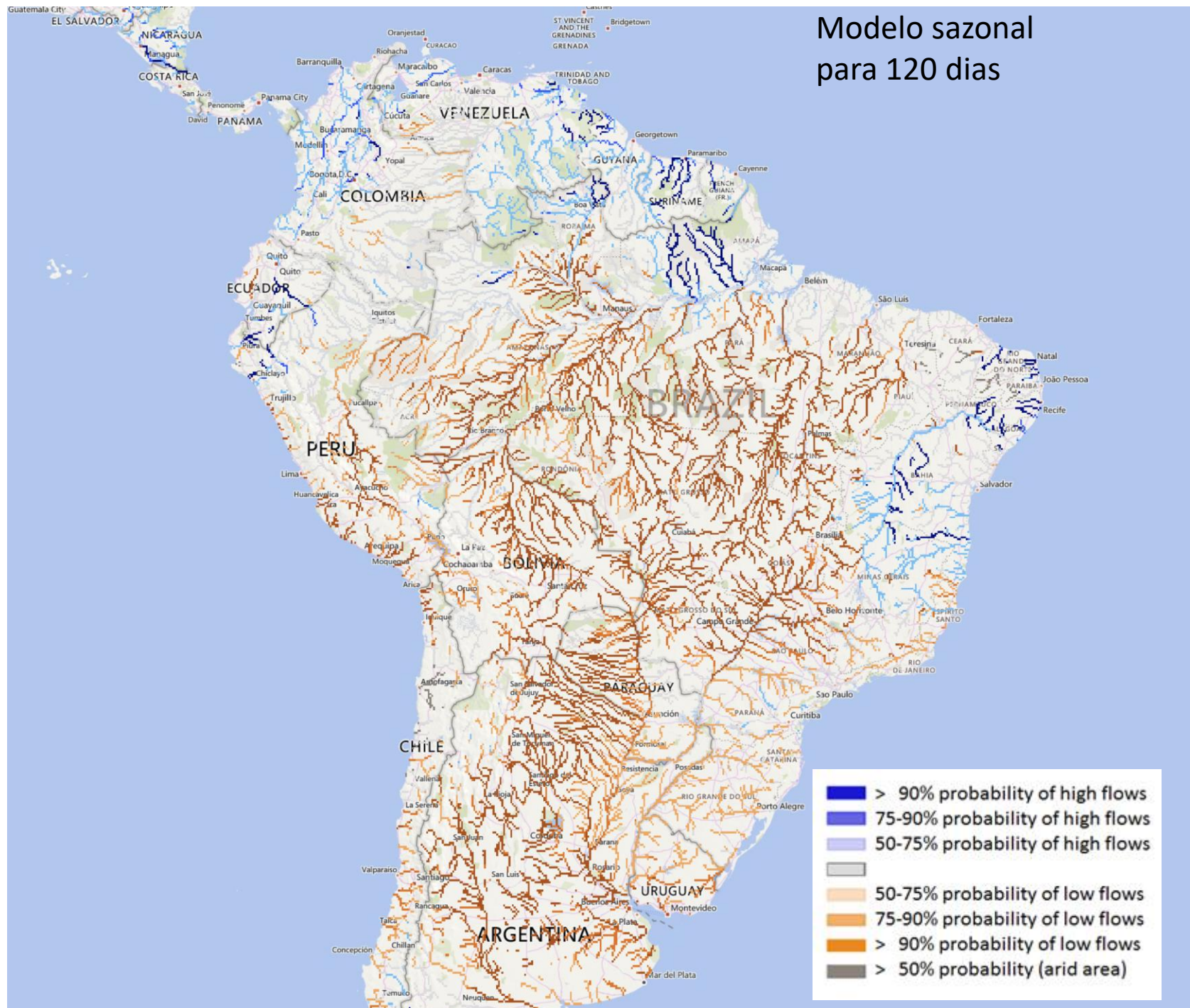


# GloFAS Run - 2022091400 PORTO VELHO



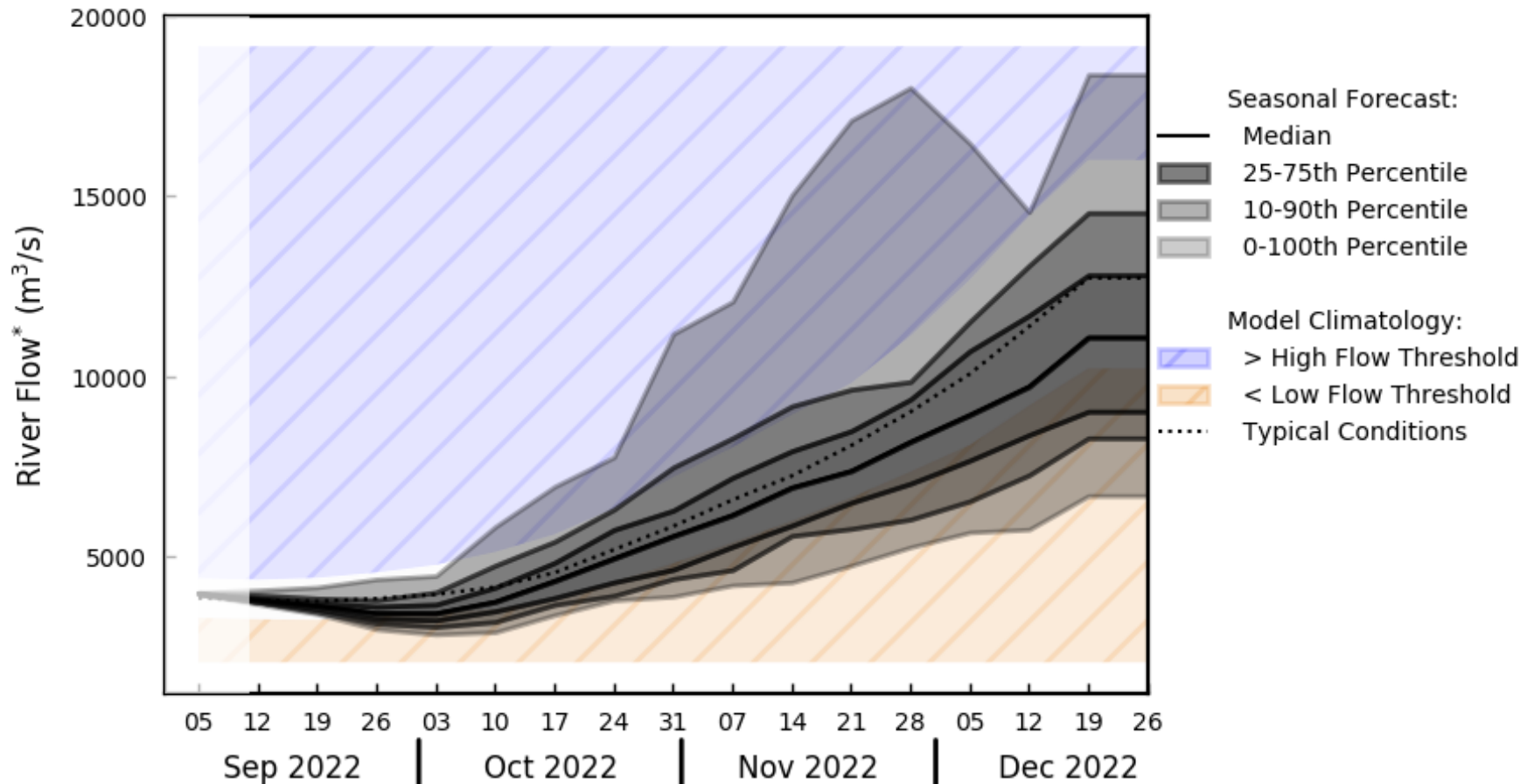


# Modelo sazonal para 120 dias



# Previsão Sazonal: GLOFAS

## Cachuela Esperanza

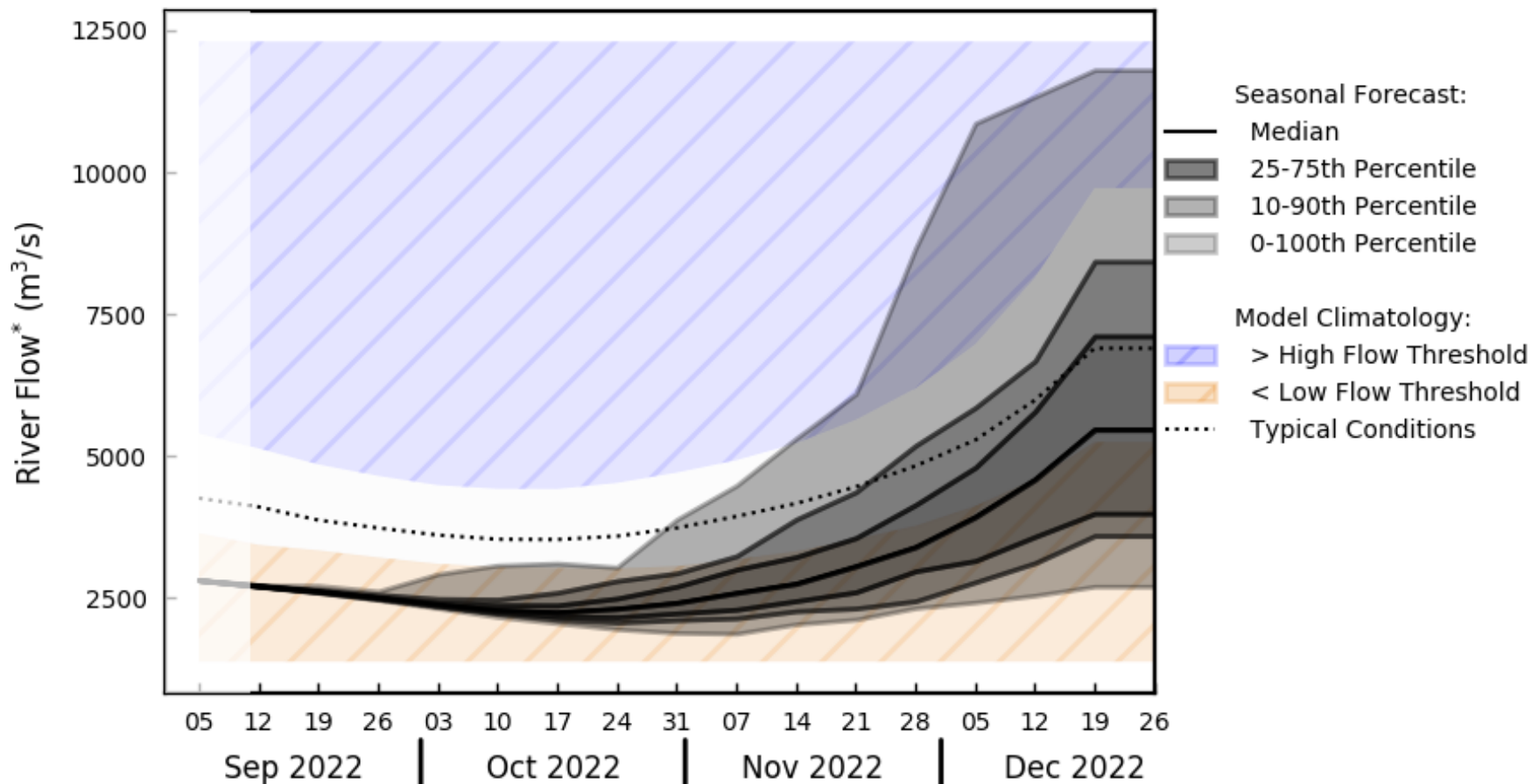


\*River flow is a weekly average, displayed at start of week (dates shown)

\*\* High and low flow thresholds refer to the 80th and 20th percentiles of the model climatology

# Previsão Sazonal: GLOFAS

Guajar -Mirim

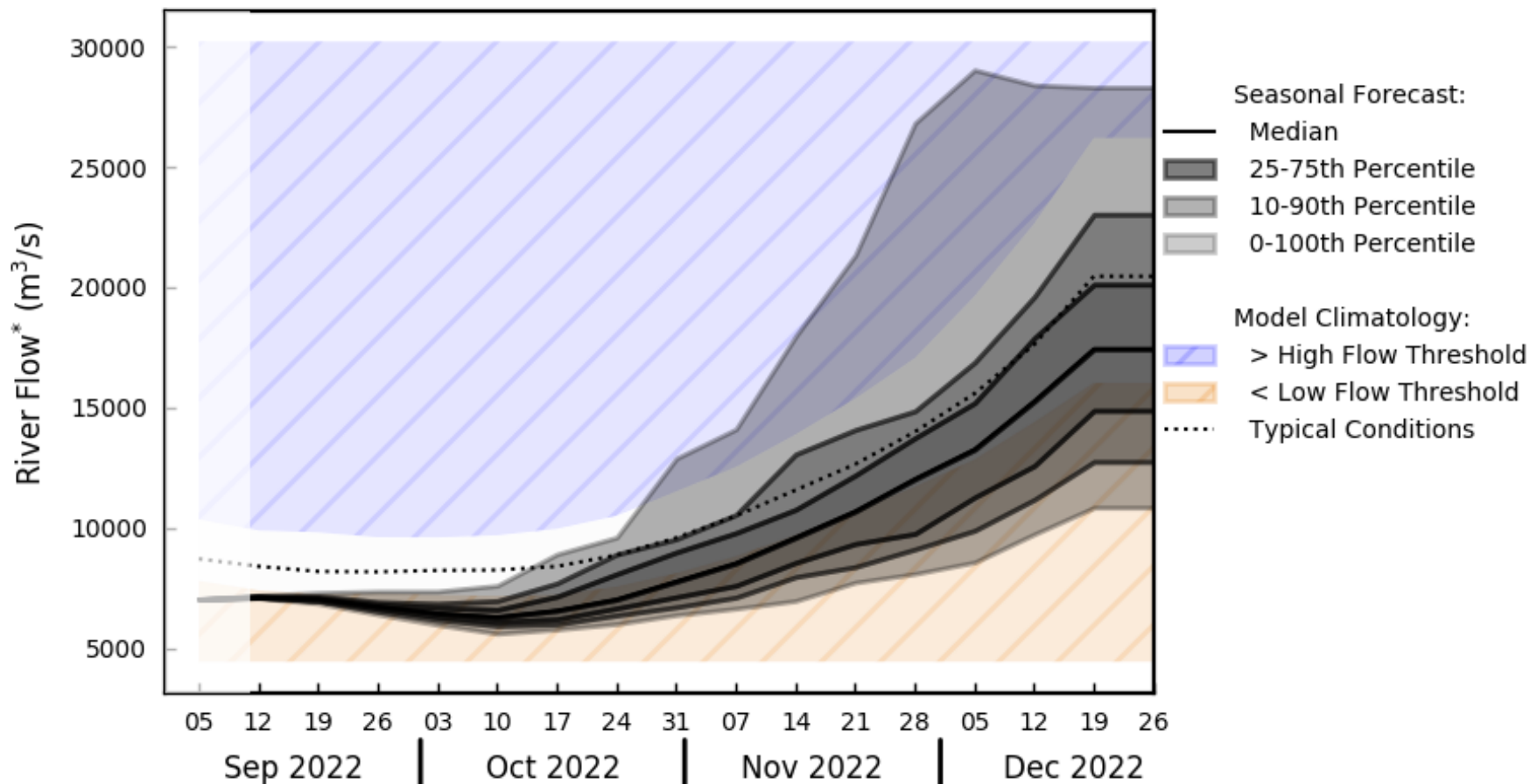


\*River flow is a weekly average, displayed at start of week (dates shown)

\*\* High and low flow thresholds refer to the 80th and 20th percentiles of the model climatology

# Previsão Sazonal: GLOFAS

Porto Velho



\*River flow is a weekly average, displayed at start of week (dates shown)

\*\* High and low flow thresholds refer to the 80th and 20th percentiles of the model climatology

Contato:

Márcio Augusto Ernesto de Moraes

Pesquisador Titular

[marcio.moraes@cemaden.gov.br](mailto:marcio.moraes@cemaden.gov.br)

(12) 3205 - 0146

Agradecimentos:

