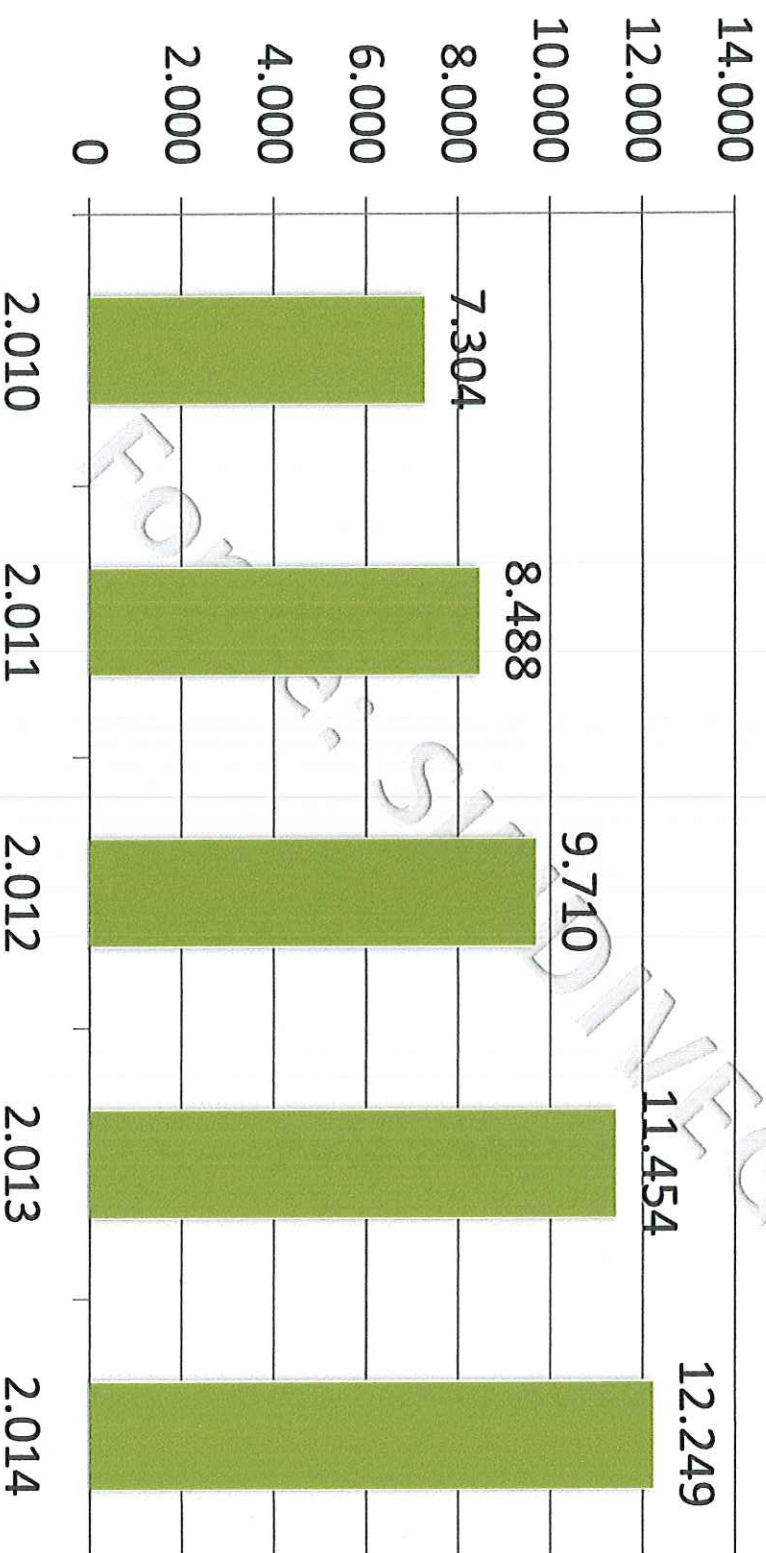


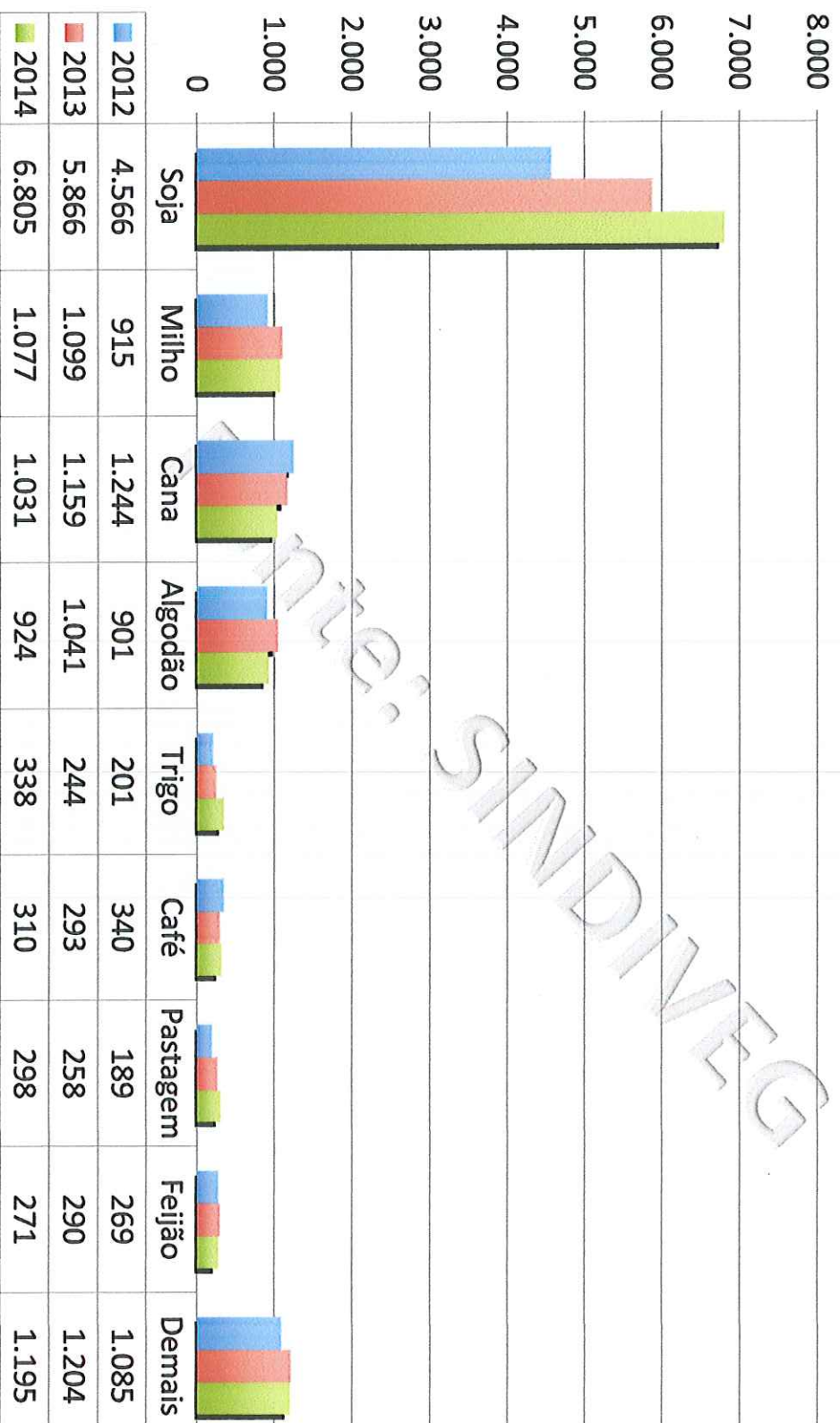
Vendas - US\$ Milhões

2010 - 2014

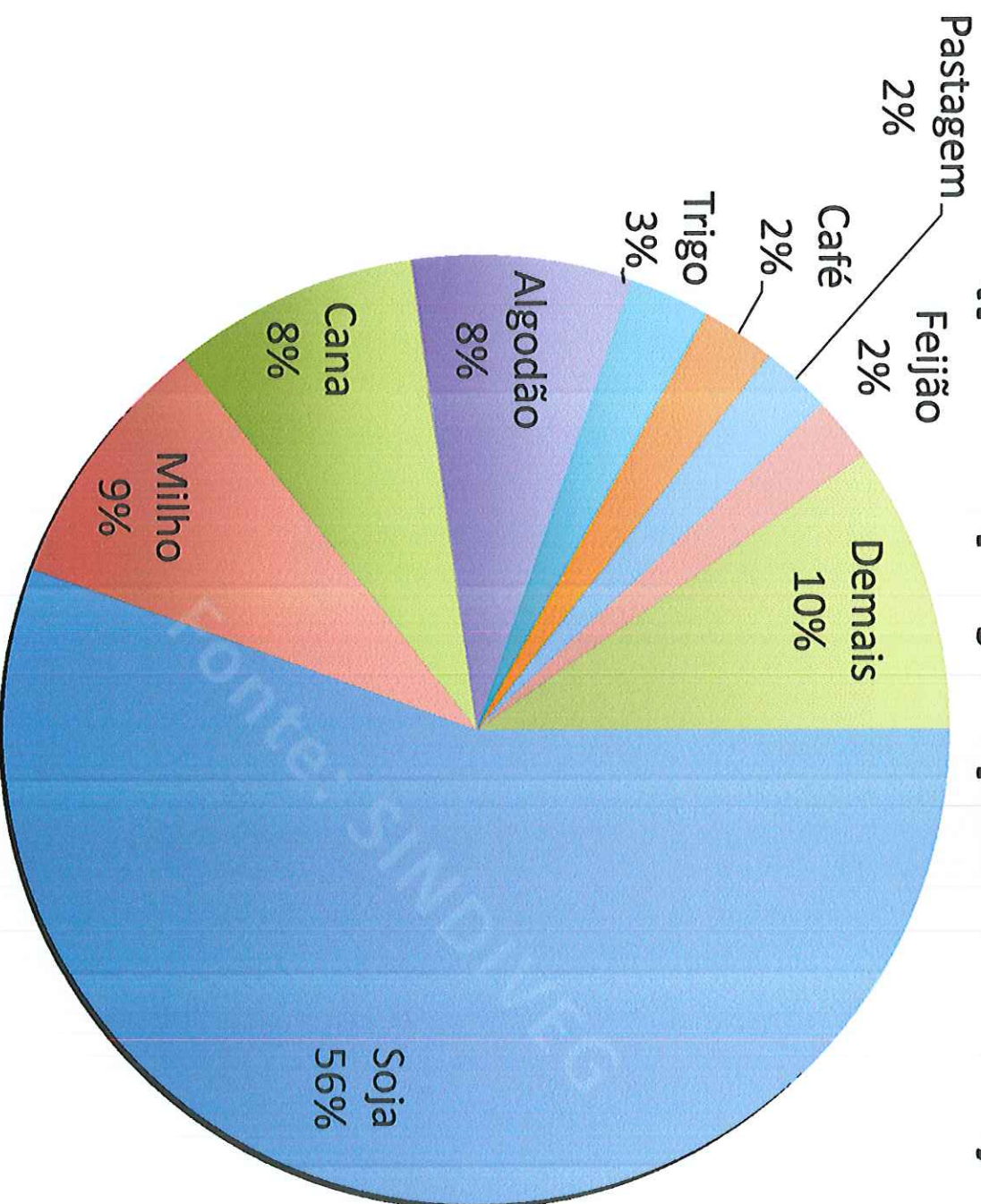


Vendas - Principais culturas

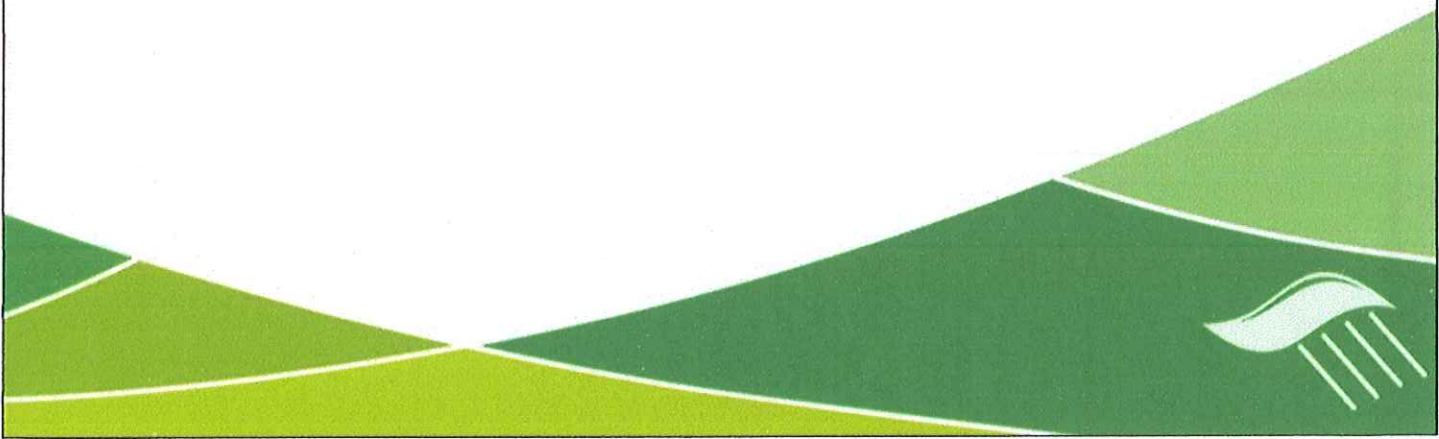
2012 a 2014 (Valor - US\$ Milhões)



Vendas por Cultura 2014 (participação percentual)



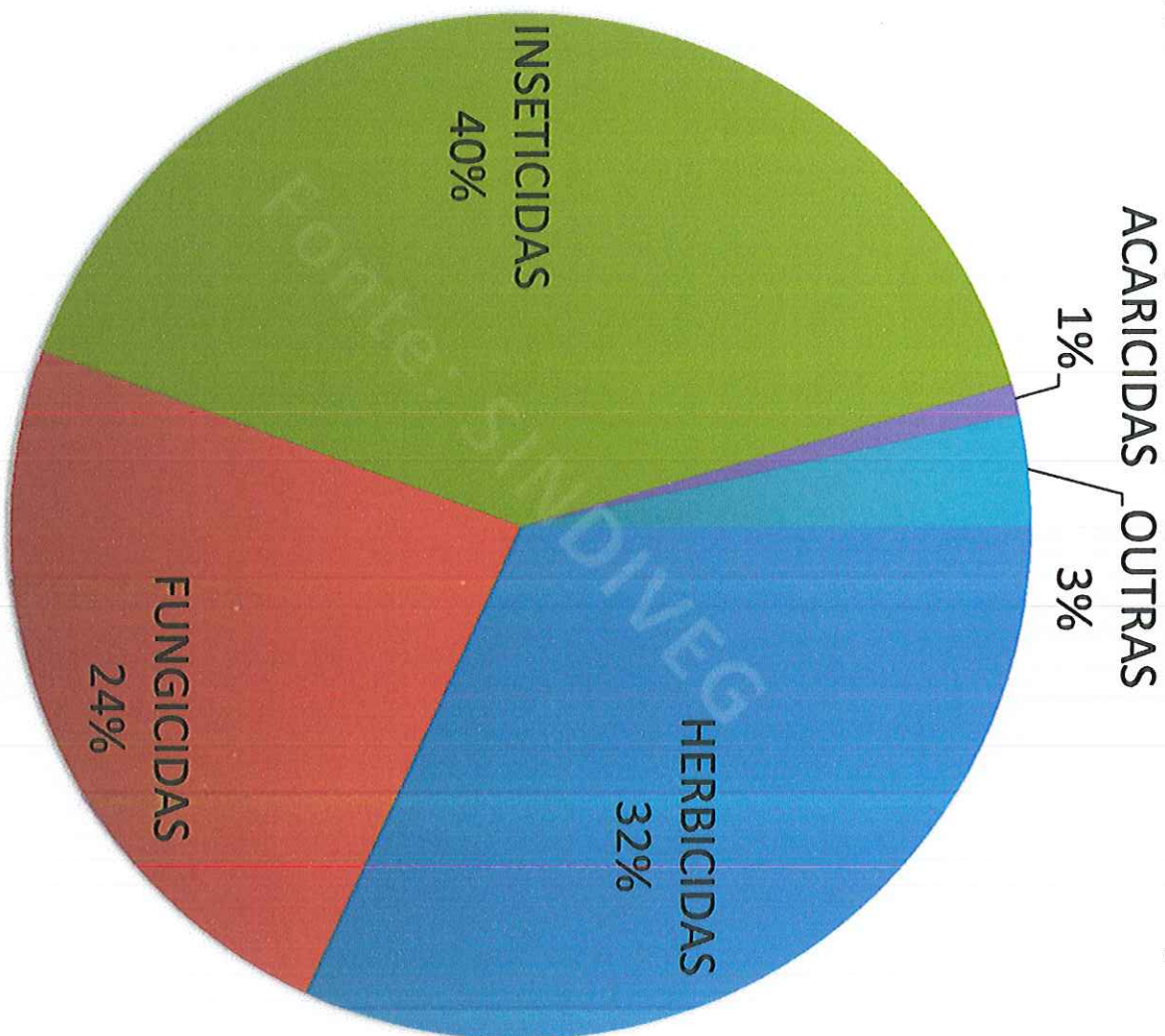
81/9 - Soja/Milho/Cana/Algodão



Vendas por Classe 2010/14 (Valor - US\$ Mil)



Vendas por Classe 2014 (participação percentual)

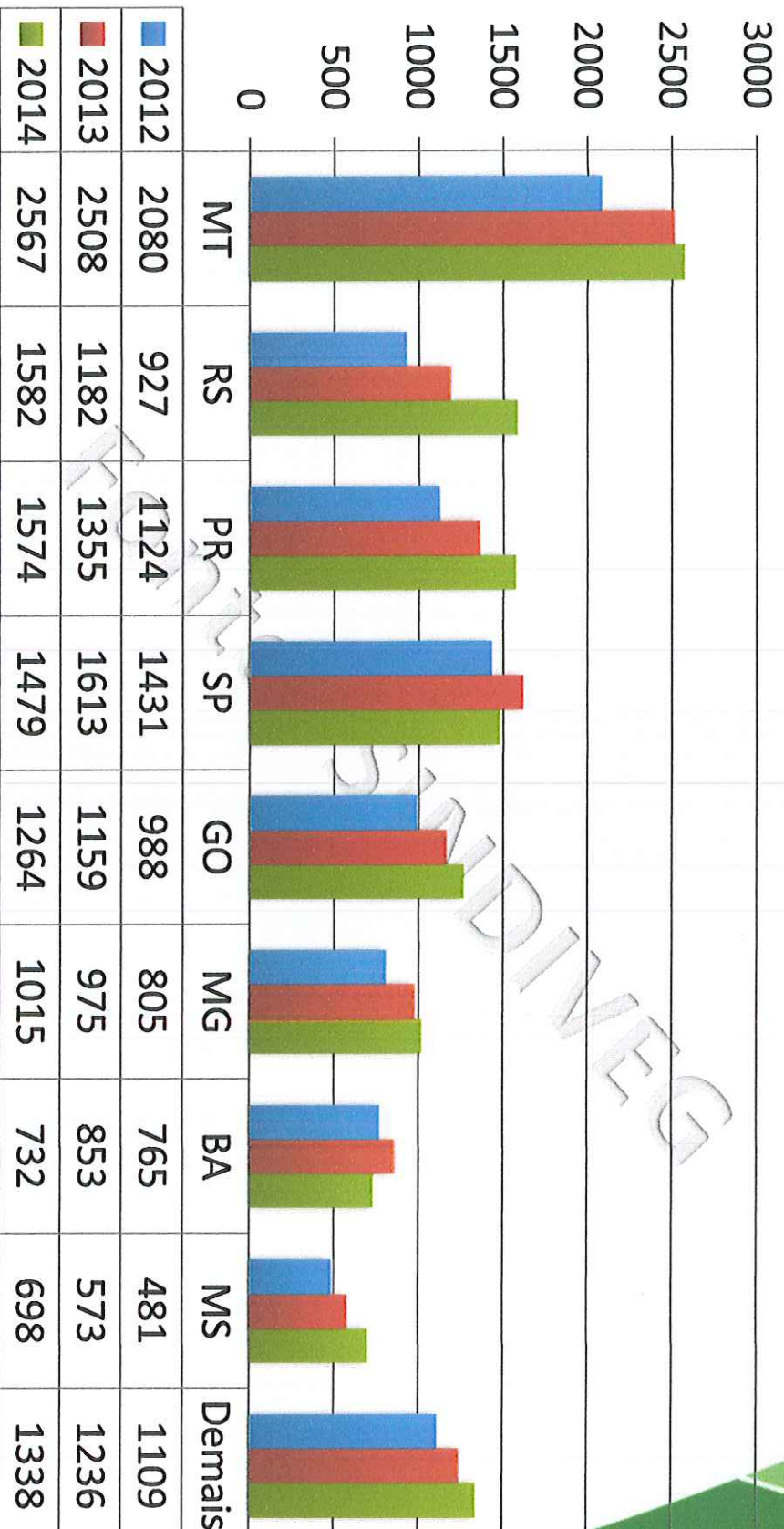


40% I
32% H
24% F

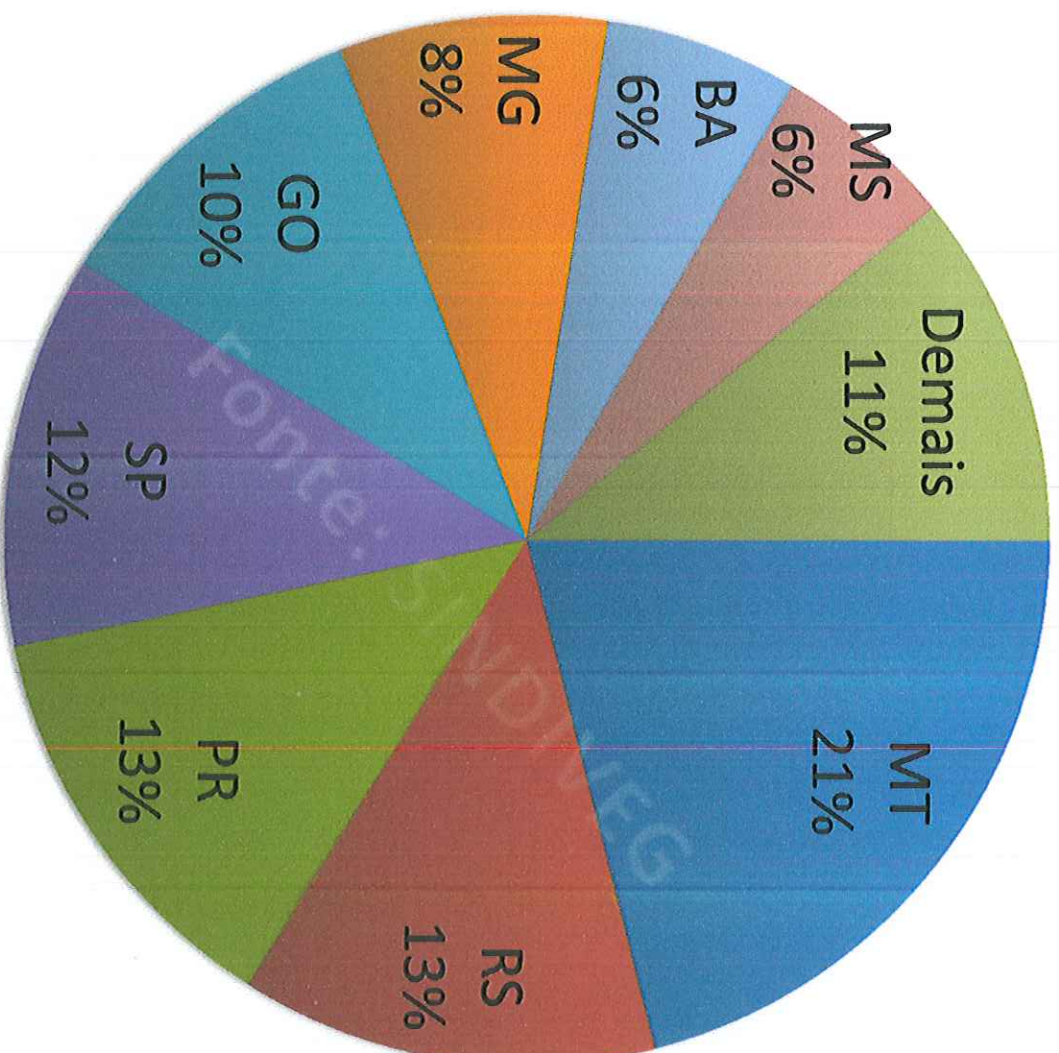


Vendas por Estado - 2012 a 2014

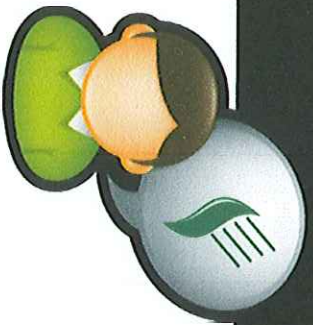
(Valor - US\$ Milhões)



Venda por Estado 2014 (participação percentual)



70% - MT + RS + PR + SP + GO



SINDIVEG - Sindicato Nacional da Indústria de Produtos para Defesa Vegetal

Mariana Konowalenko / Juliana Cruz

(11) 5094-5529 / 5520

imprensa@sindiveg.org.br