

PROJETO – Contribuição dos citricultores na dinâmica dos estoques de carbono

Câmara Setorial da Citricultura

28 de fevereiro de 2023

VINICIUS TROMBIN

PARCERIA:










FINANCIAMENTO:



QUAL É A GRANDE MOTIVAÇÃO?

UNFCCC Sites and platforms Recruitment portal NAZCA JI Submission Portal NDC Registry NAP Central MRV/Transparency helpdesk REDD+ More »

 United Nations
Climate Change

Search EN -      

Home SB 56 Process and meetings Topics Calendar Climate action - Documents and decisions - About us -

News --- The Evidence Is Clear: The Time for Action Is Now. We Can Halve Emissions by 2030.

EXTERNAL PRESS RELEASE / 04 APR, 2022

The Evidence Is Clear: The Time for Action Is Now. We Can Halve Emissions by 2030.

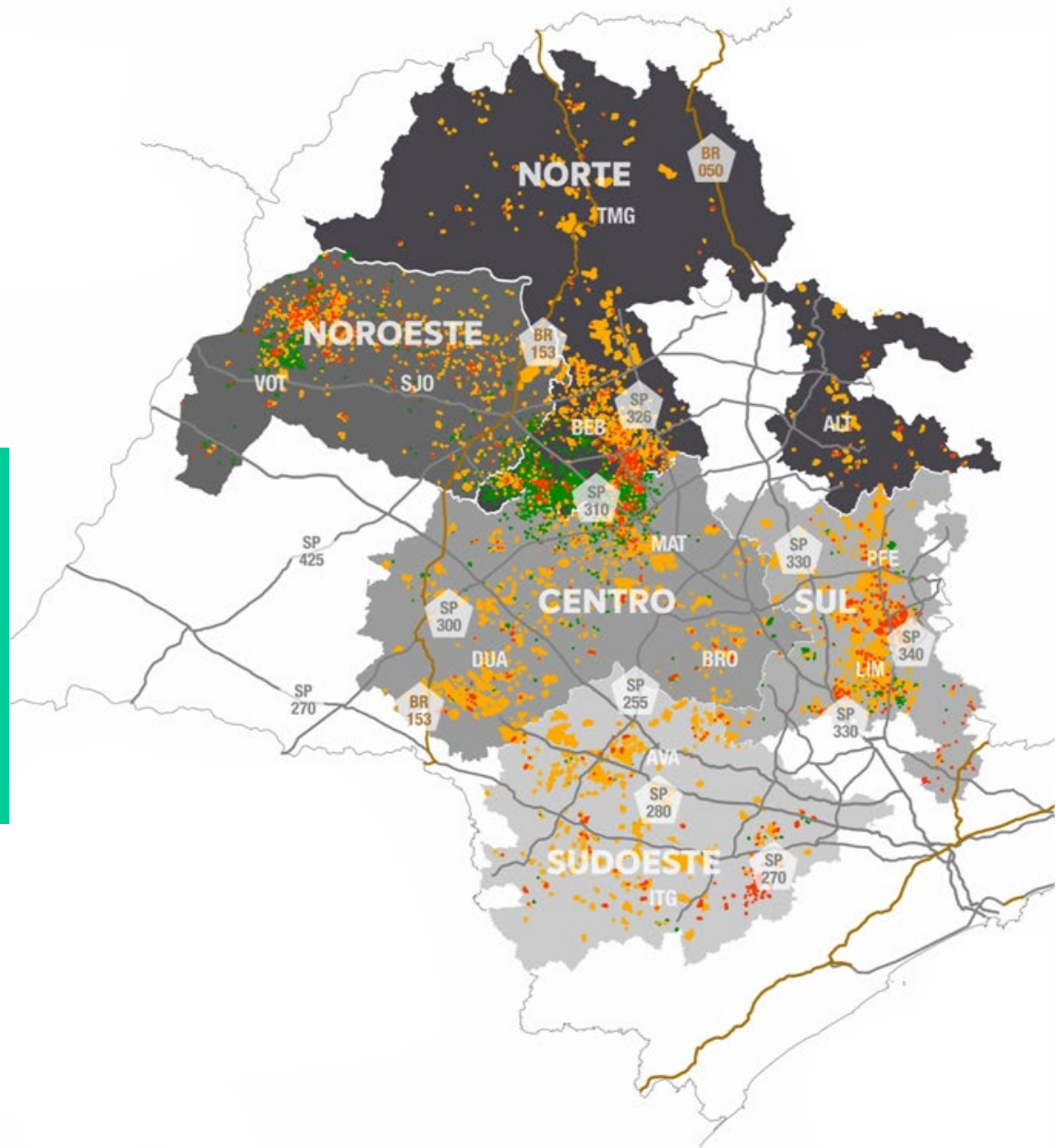




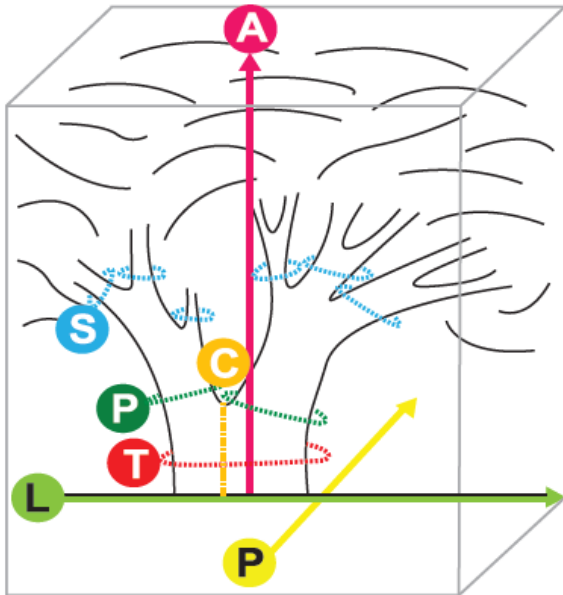
Clima selvagem: documentário da rede BBC explica eventos extremos e o que fazer para evitar tragédias maiores



O QUE
ESTAMOS
FAZENDO?



Medidas das laranjeiras (3.000 laranjeiras)

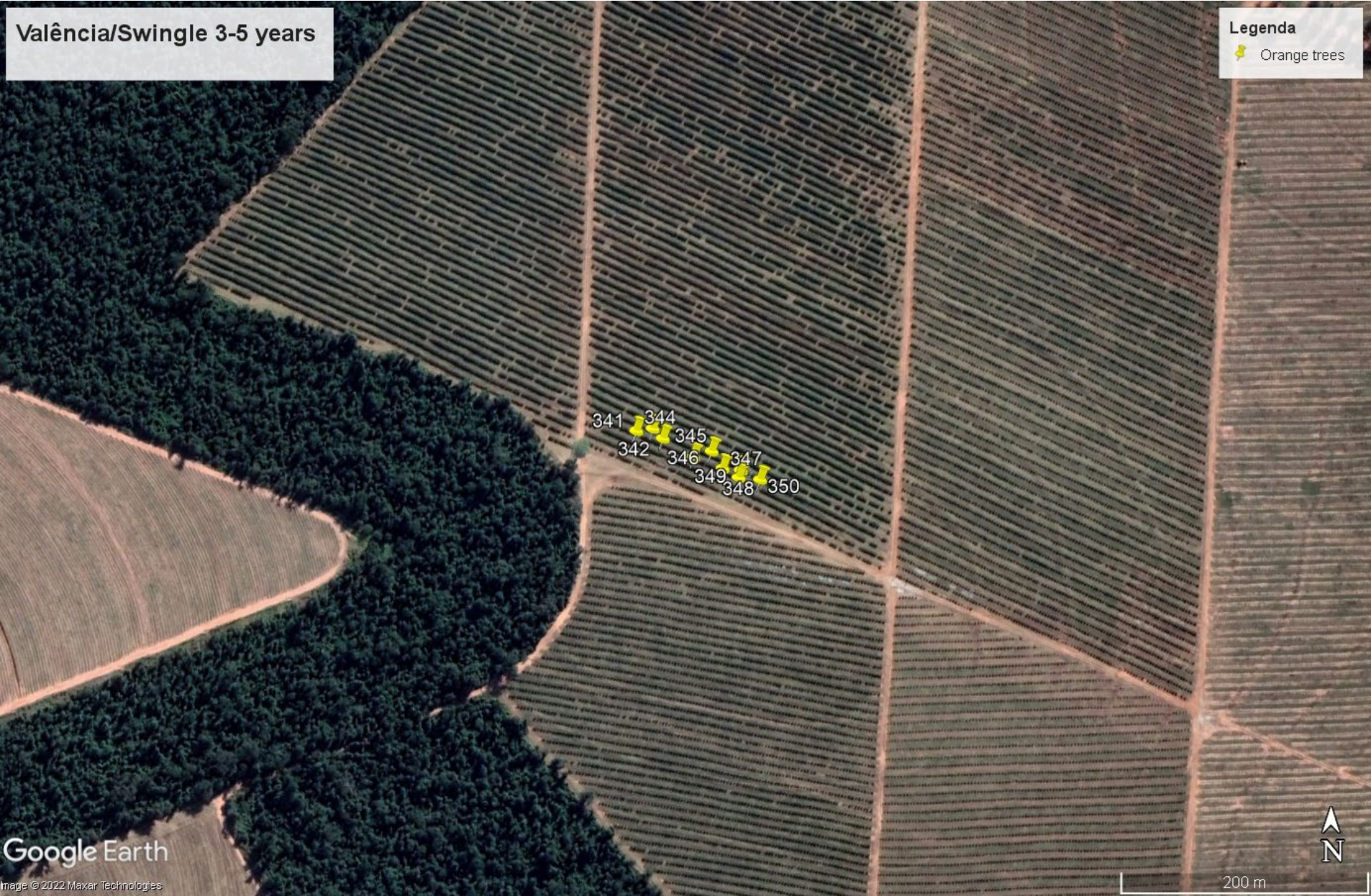


Quantificação do estoque de carbono em 80 laranjeiras

Pera em Cravo	Quantidade
3-5	10
6-10	10
11-15	10
>15	10
Valência em Swingle	
3-5	10
6-10	10
11-15	10
>15	10

Valência/Swingle 3-5 years

Legenda
📍 Orange trees



341 344
342 345
346 347
349 348 350

Google Earth

Image © 2022 Maxar Technologies



200 m

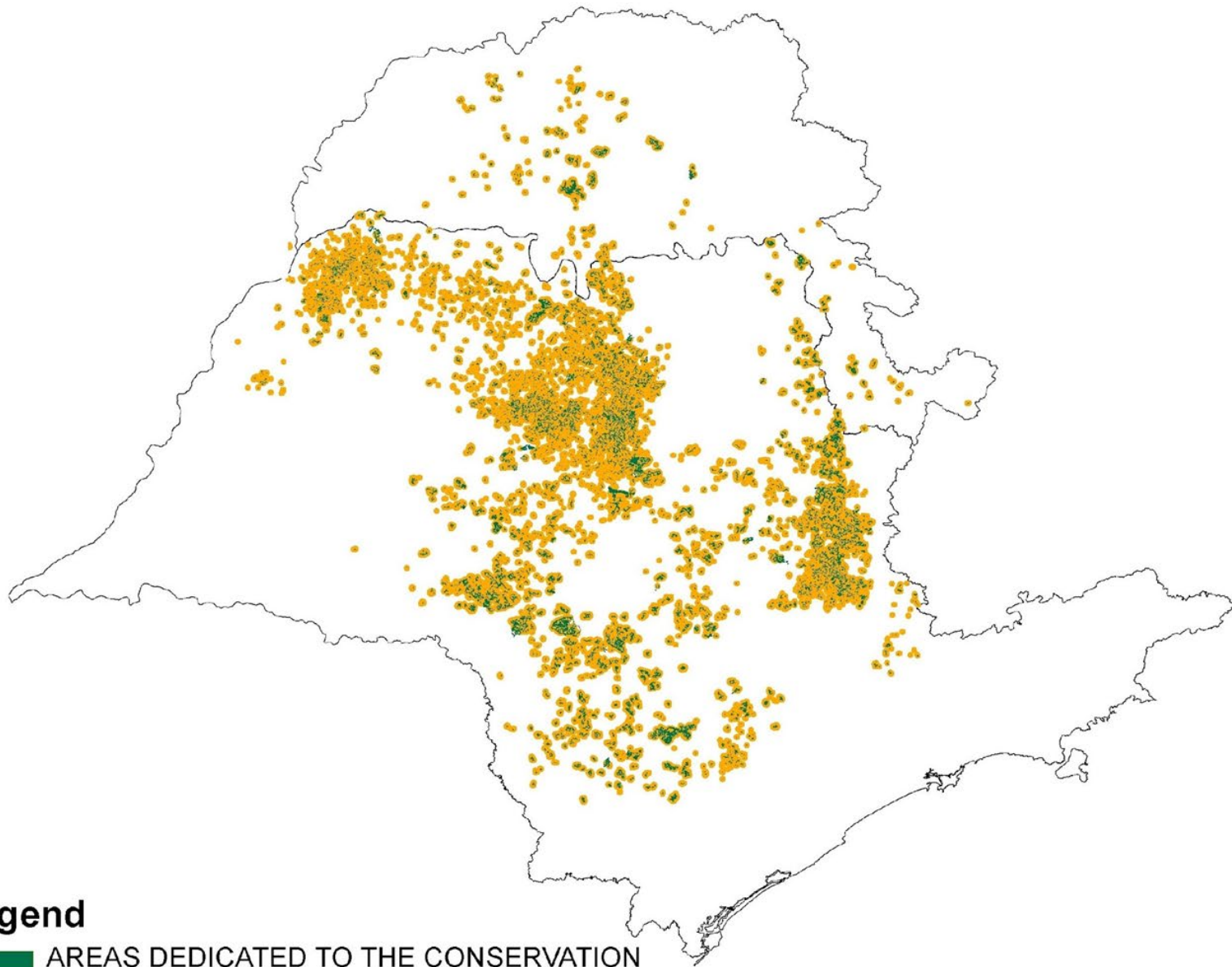












Legend

-  AREAS DEDICATED TO THE CONSERVATION OF NATIVE VEGETATION
-  ORANGE AREAS

MapBiomas is an initiative of the Greenhouse Gas Emissions Estimation System (SEEG) from the Climate Observatory's and is produced by a **collaborative network of co-creators** made up of NGOs, universities and technology companies organized by biomes and cross-cutting themes.

Biomes Coordination:

Amazon – Institute of People and Environment of the Amazon (IMAZON)

Caatinga – Feira de Santana State University (UEFS), Northeast Plants Association (APNE) e GeoDatin

Cerrado – Amazon Environmental Research Institute (IPAM)

Atlantic Forest – SOS Mata Atlantica Foundation and ArcPlan

Pampa – Federal University of Rio Grande do Sul (UFRGS) and GeoKarten

Pantanal – SOS Pantanal Institute and ArcPlan

Legend

